



Installing Your Multifunction to Your Network

PIXMA MG6820

Windows

Setup and Installation

Setup and Installation

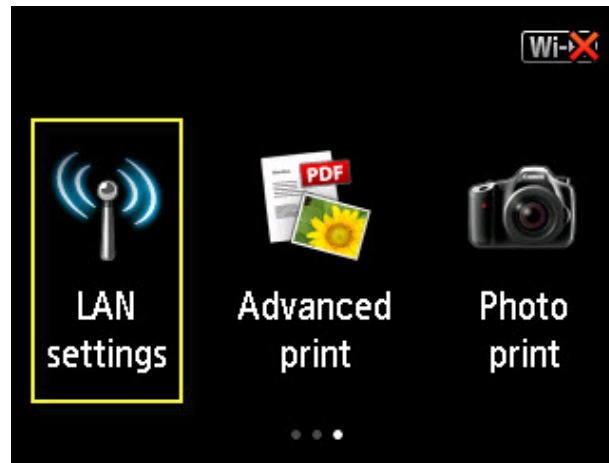
The instructions contained in this document apply equally to first-time installations, adding the printer to additional computers in the Wireless Network and for re-installations after a Router or Network change.

To use the machine wirelessly with a computer, the printer must be connected to the Wireless LAN and software including the drivers needs to be copied (installed) to the computer's hard disk. Installation time varies depending on the computer environment or the number of application software to be installed.

IMPORTANT

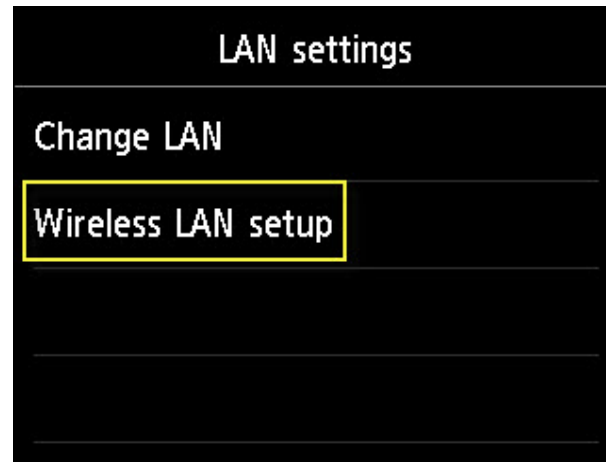
- Log on as the administrator (or a member of the Administrators group).
- Quit all running applications before software installation.
- Do not switch users during the installation process.
- Internet connection may be required during the installation. Connection fees may apply. Consult the internet service provider.
- It may be necessary to restart your computer during the installation process. Follow the on-screen instructions.
. The installation resumes once your computer has restarted.
- If the firewall function of your security software is turned on, a warning message may appear that Canon software is attempting to access the network. If such a warning message appears, set the security software to always allow access.

Connecting to the Wireless LAN



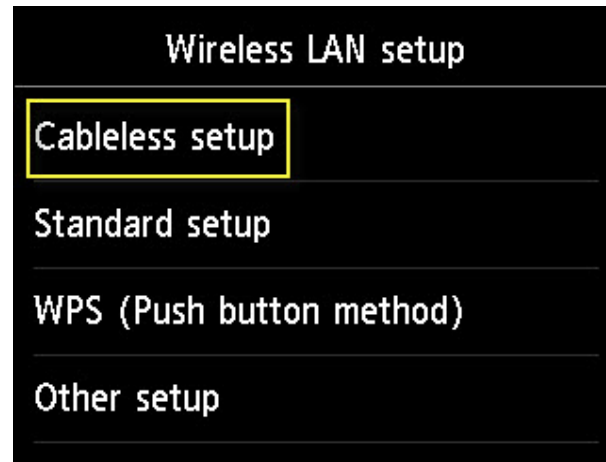
1. From the **Home** screen, swipe from right to left until **LAN settings** appears. Then tap its icon.

Connecting to the Wireless LAN



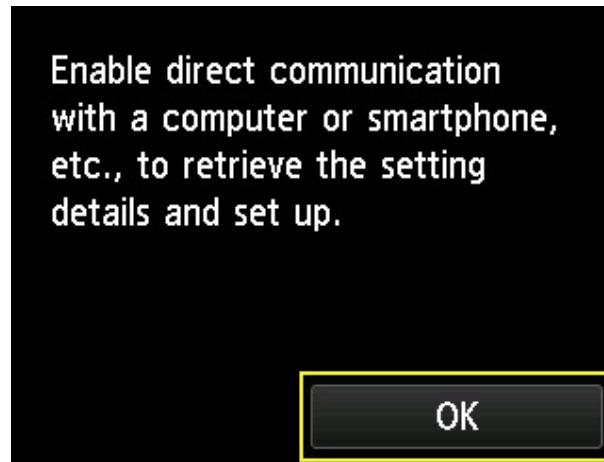
2. Tap **Wireless LAN setup**.

Connecting to the Wireless LAN



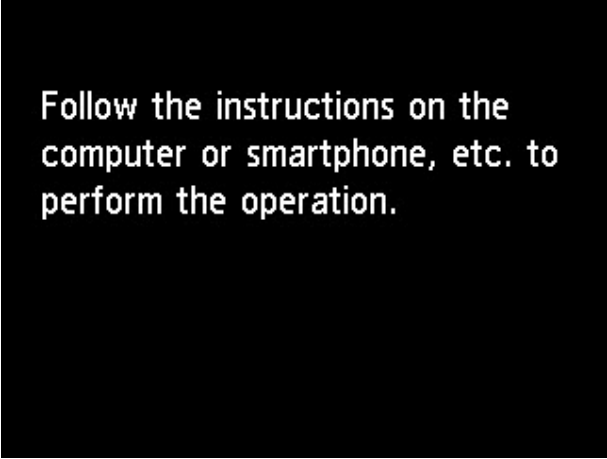
3. Tap **Cableless setup**.

Connecting to the Wireless LAN



4. Tap **OK** on this message.

Connecting to the Wireless LAN



Follow the instructions on the computer or smartphone, etc. to perform the operation.

5. When this screen appears, the printer is waiting to receive the information on the wireless network. Go to the computer.

Connecting to the Wireless LAN

Insert the Setup CD-ROM into your computer.*

Click [Run Msetup4.exe] on the AutoPlay screen, then click [Yes] or [Continue] on the User Account Control dialog box.

If the CD-ROM does not autorun:

Double-click [(My) Computer] > CDROM icon > [MSETUP4.EXE.]



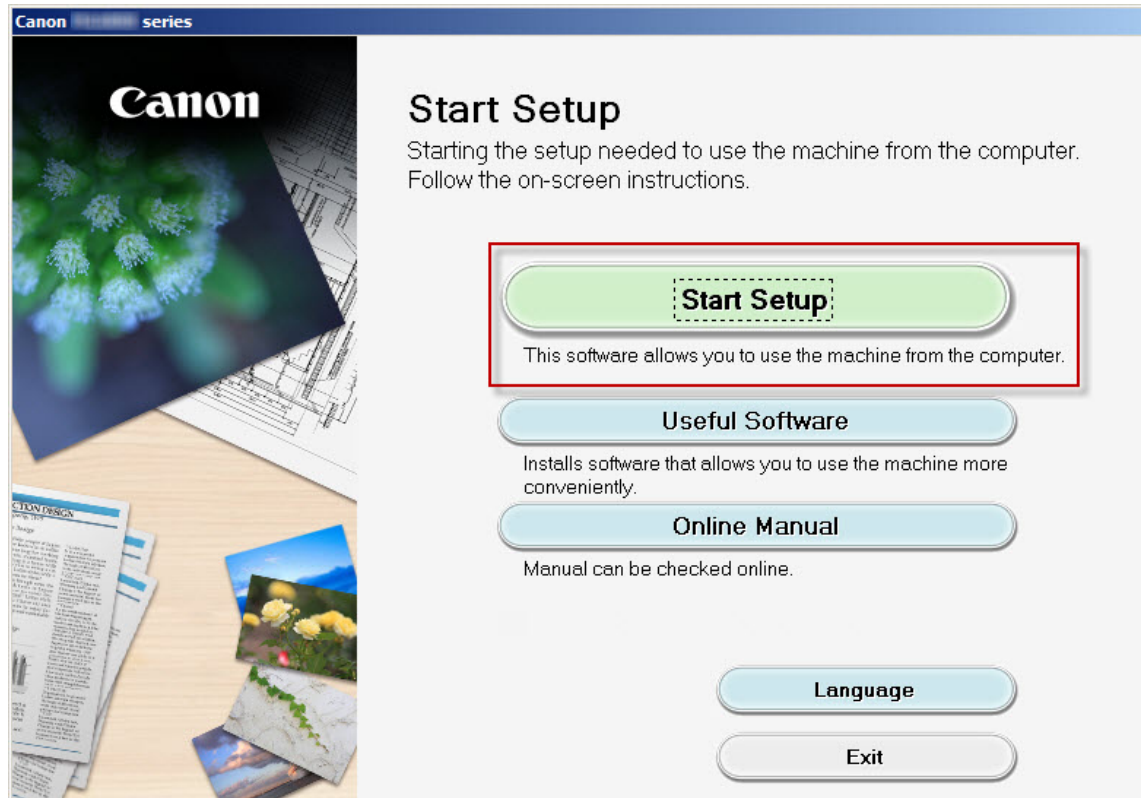
*If you don't have or cannot use the Setup CD-ROM, follow the steps below to start the setup.

- [Download the software](#) (click the link to download)
- Double-click the downloaded .exe file (win-mg6800-1_0-jucd.exe)

If the **User Account Control** dialog box appears during the setup, click **Yes** or **Continue**.

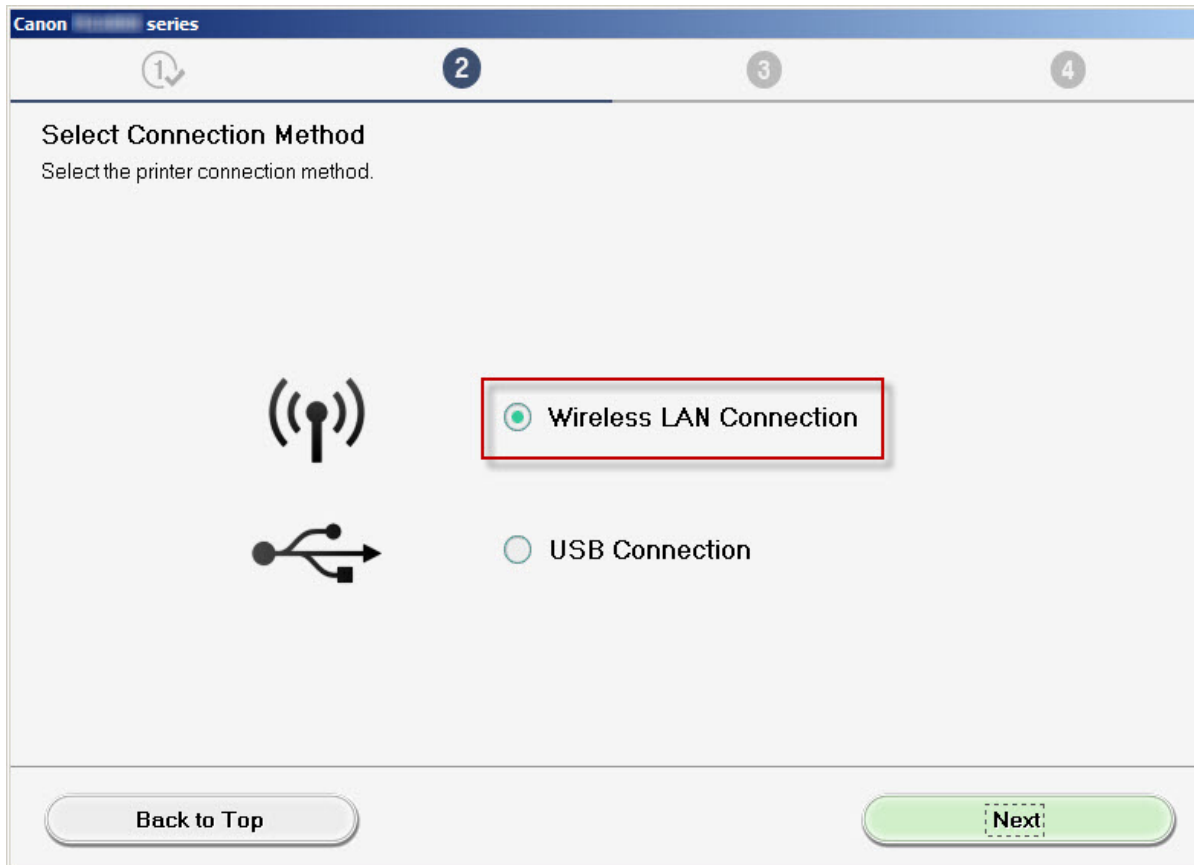
Connecting to the Wireless LAN

Click **Start Setup** on the initial screen.



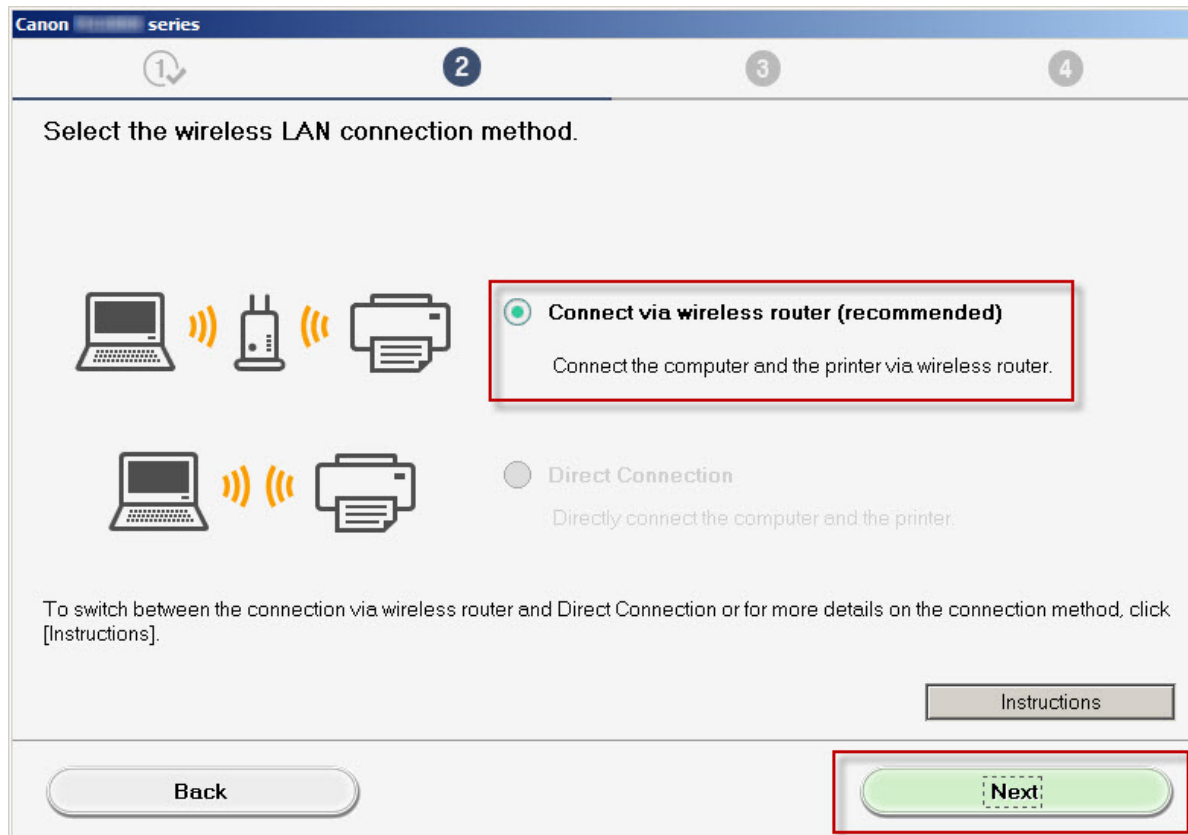
Connecting to the Wireless LAN

Continue following on-screen instructions to select country, License Agreement, etc. until the **Select Connection Method** screen appears. Be sure to select **Wireless LAN Connection**, then click **Next**.



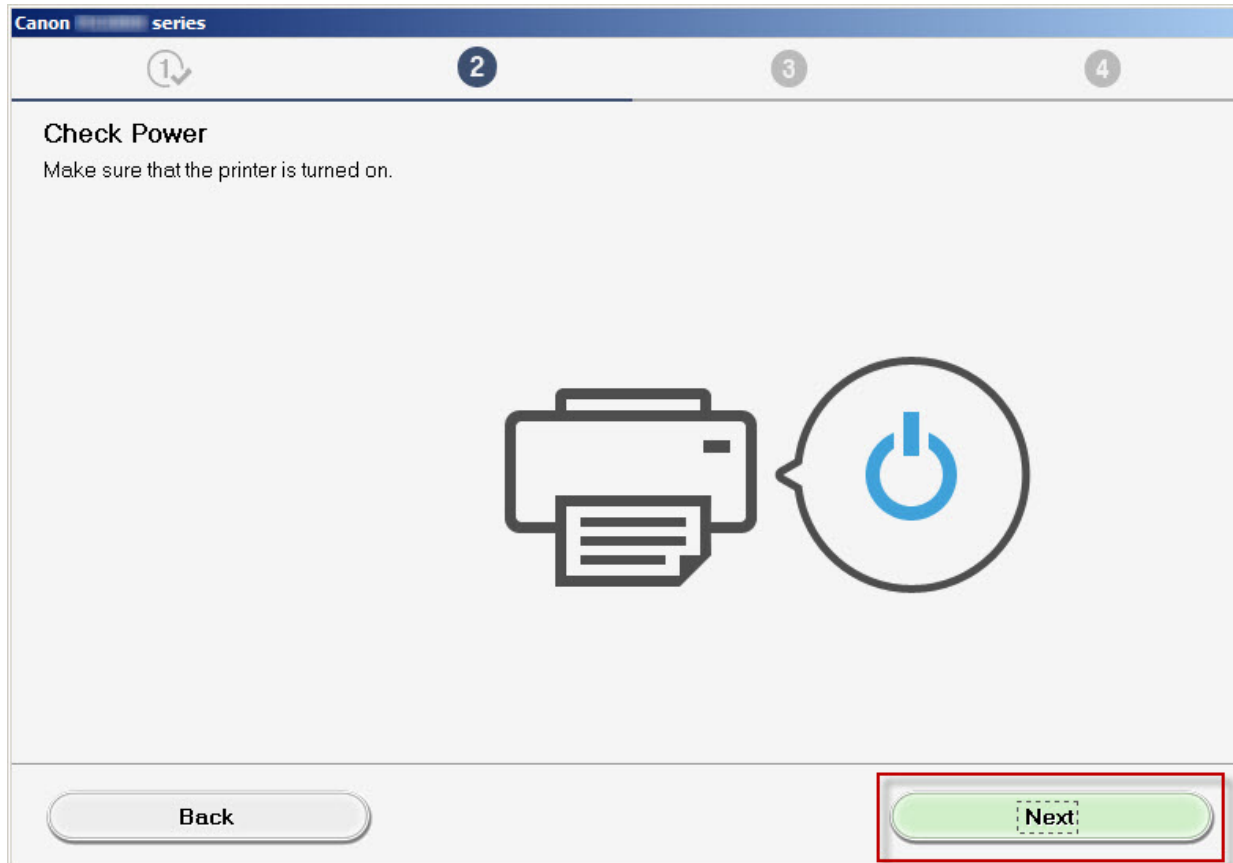
Connecting to the Wireless LAN

Select **Connect via wireless router (recommended)** then click **Next**.



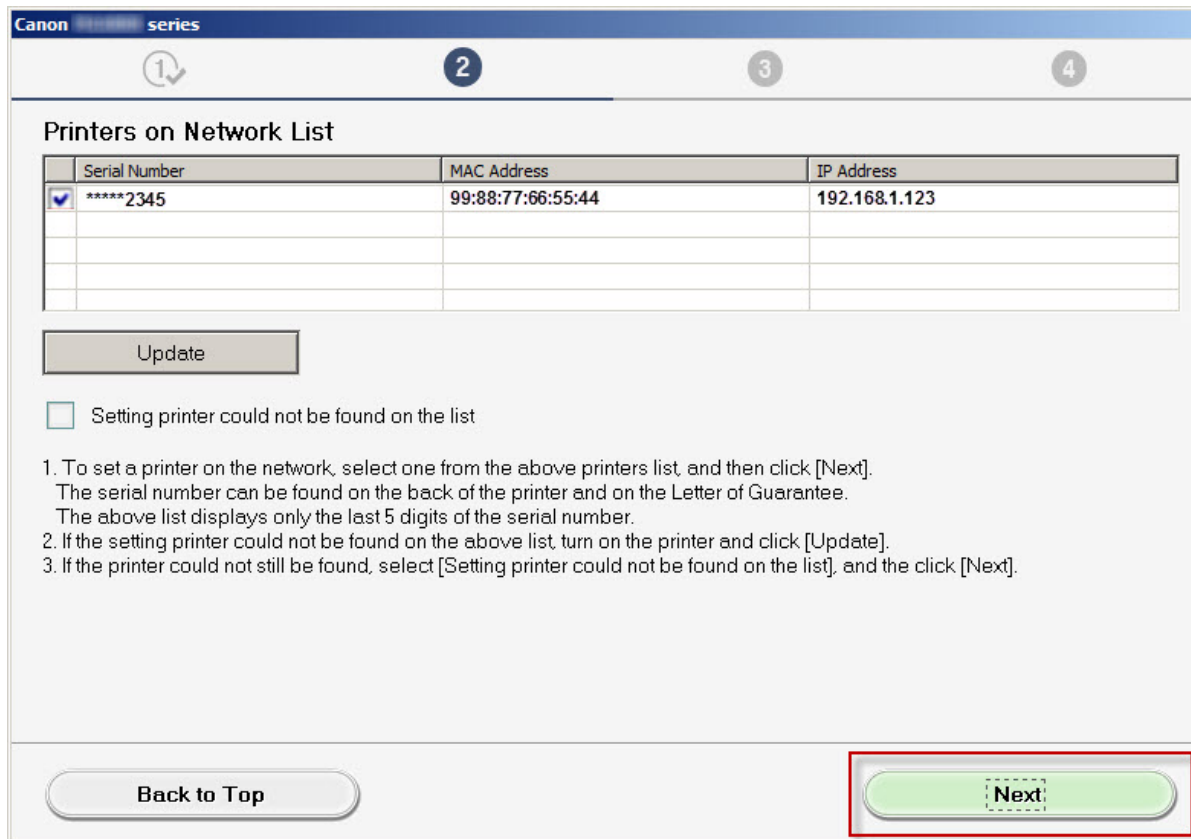
Connecting to the Wireless LAN

Click **Next** on the **Check Power** screen.



Connecting to the Wireless LAN

On the **Printers on Network List** verify your printer is selected by checking the listing in the **Serial Number** column. This will show the last 5 digits of the printer's serial number. The serial number is found on a sticker on the back of the printer near the bottom. Click **Next**.



Canon series

1 2 3 4

Printers on Network List

	Serial Number	MAC Address	IP Address
<input checked="" type="checkbox"/>	*****2345	99:88:77:66:55:44	192.168.1.123
<input type="checkbox"/>			
<input type="checkbox"/>			
<input type="checkbox"/>			

Update

Setting printer could not be found on the list

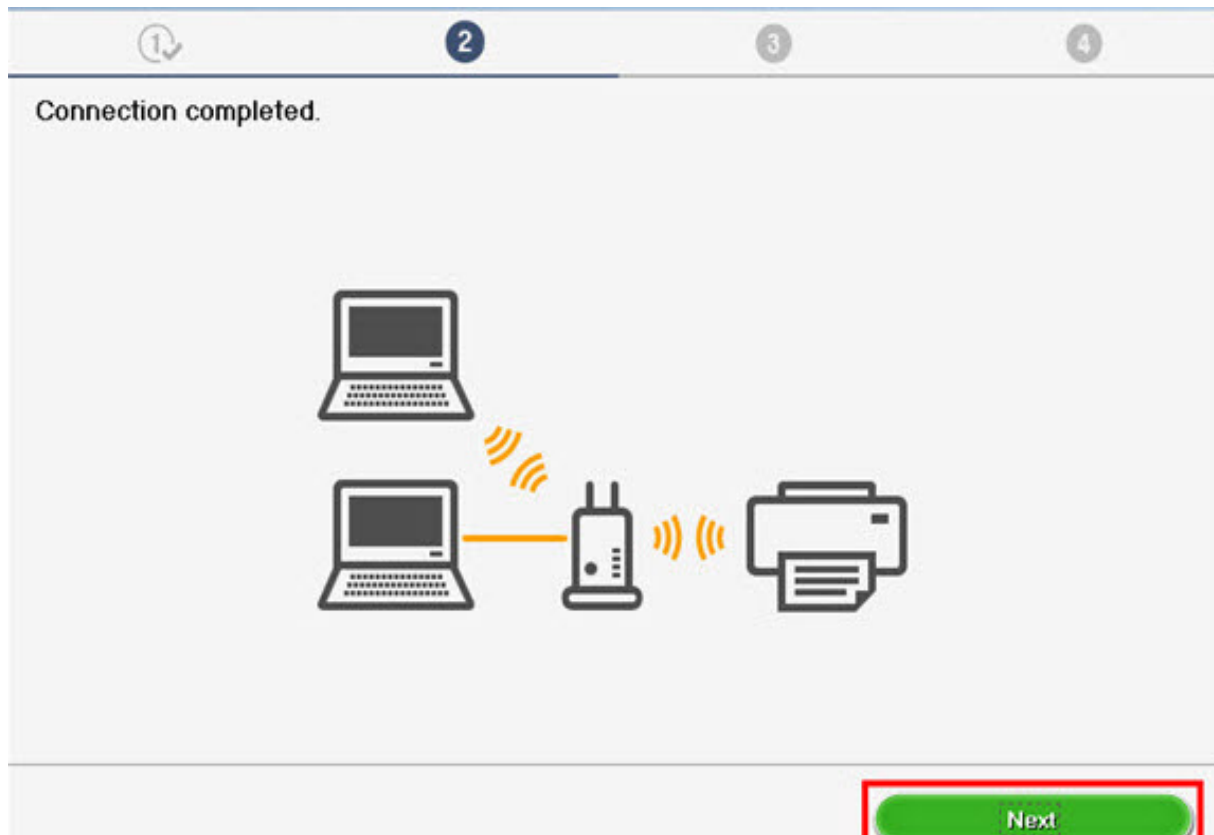
1. To set a printer on the network, select one from the above printers list, and then click [Next].
The serial number can be found on the back of the printer and on the Letter of Guarantee.
The above list displays only the last 5 digits of the serial number.
2. If the setting printer could not be found on the above list, turn on the printer and click [Update].
3. If the printer could not still be found, select [Setting printer could not be found on the list], and then click [Next].

Back to Top

Next

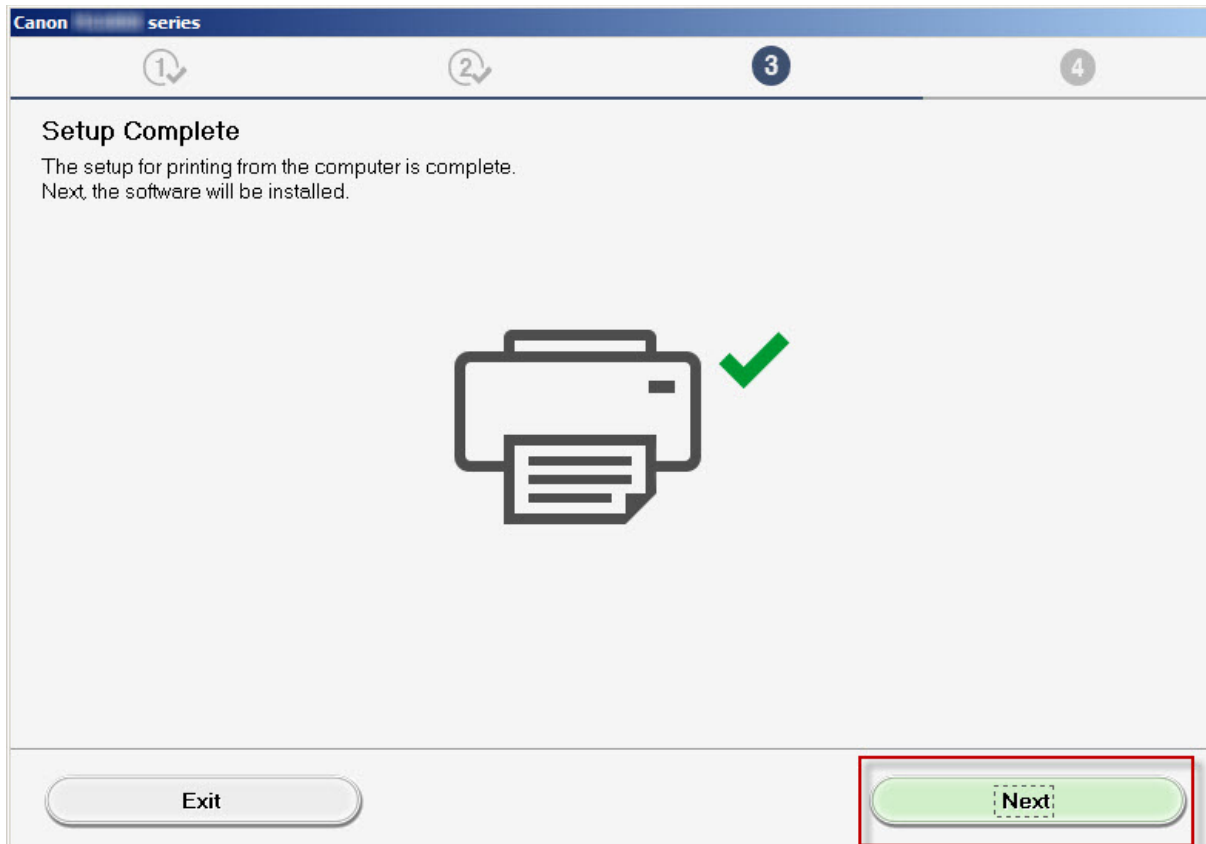
Connecting to the Wireless LAN

Click **Next** on the **Connection Completed** screen.



Installing the Drivers & Software

Continue to follow on-screen instructions. Click **Next** on the **Setup Complete** screen.



Installing the Drivers & Software

Continue to follow the on-screen instructions. On the **Software Installation List**, select any of the optional software to install and click **Next**.

Canon series

1 2 3 4

Software Installation List

The selected software will be installed. Make sure that the software you want to install is selected, and then click [Next].

<input checked="" type="checkbox"/> User's Manual	10 MB	Drive C: 170784 MB free space Total used space: 879 MB
<input checked="" type="checkbox"/> My Printer	14 MB	
<input checked="" type="checkbox"/> My Image Garden	705 MB	
<input checked="" type="checkbox"/> Quick Menu	40 MB	
<input checked="" type="checkbox"/> Easy-WebPrint EX	110 MB	
<input type="checkbox"/> XPS Driver	130 MB	

Estimated installation time: 5 to 10 minutes
Installation may take some time depending on your network environment.

Clear All

Back to Top

Next

Installing the Drivers & Software

At this point the connection has been established and Drivers and Software has been installed. Please follow any remaining instructions to finish and exit the setup. Click **Exit** when the **Installation completed successfully** screen appears.

