

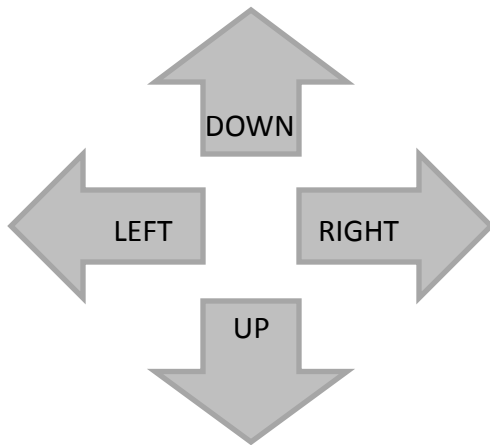


# **Installing Your Multifunction to Your Network for the First Time**

**PIXMA MX882**

**Mac OS**

# Navigation Tips for Macintosh Users



To navigate this guide, please use the arrows on the MAC keyboard or use the PAGE UP and Page DOWN keys.

Page UP

Page DOWN

# Installing Your Multifunction to Your Network for the First Time

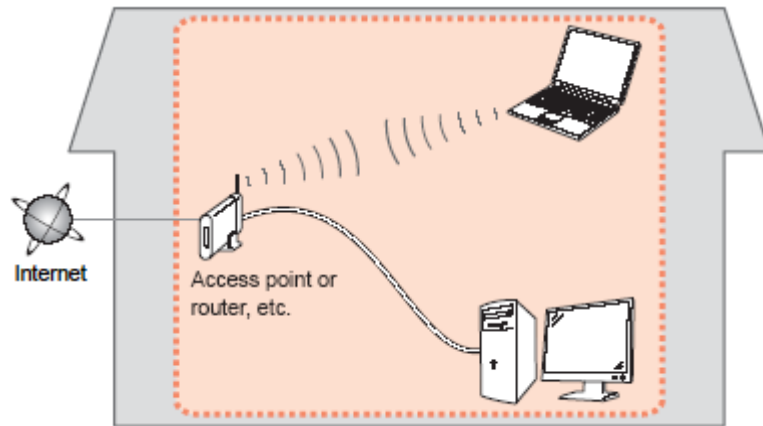
PIXMA MX882  
Mac OS

<b>Preparing to Connect My Multifunction to My Network</b>	<b>4</b>
Network Requirements	4
Important Information You Need Before Adding Your Multifunction	5
<b>Adding Your Multifunction to Your Network</b>	<b>6</b>
<b>Installing the Drivers &amp; Software</b>	<b>11</b>
<b>Registering the Printer &amp; Scanner</b>	<b>16</b>

# Preparing to Connect My Multifunction To My Network

## Network Requirements

Before connecting the machine to the network, make sure that configuration of the computer and access point or router is complete, and that the computer is connected to the network.



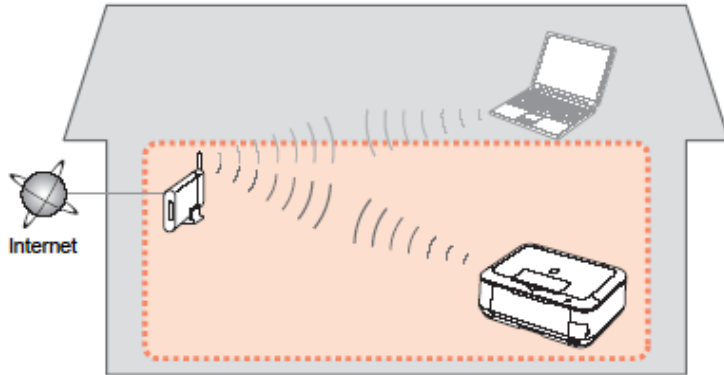
### Notes on Network Connection

- The configuration, router functions, setup procedures and security settings of the network device vary depending on your system environment. For details, refer to your device's instruction manual or contact its manufacturer.
- The machine cannot be used over a wireless and wired connection at the same time.

### Wireless Connection

Connect to your network environment over a wireless connection.

# Preparing to Connect My Multifunction To My Network



An "Ad-hoc connection," which establishes a direct connection to the computer over a wireless connection without using an access point, is not supported.

**Be sure to prepare an access point.**

## Important Information You Need Before Adding Your Multifunction

The following information is required to connect to your access point or router.

- **Access Point Name/Network Name:**

Also referred to as **SSID**. A name to identify the specific access point.

- **Network Key:**

Also referred to as encryption key, WEP key or WPA/WPA2 passphrase, Pre-Shared key.

A password required to set to prevent unauthorized access to communication.

Check your access point or router for the following information, and then write it down.

**NOTE:** For details on how to check the following information, refer to the manual of your access point or router, or contact its manufacturer.

# Adding Your Multifunction to Your Network

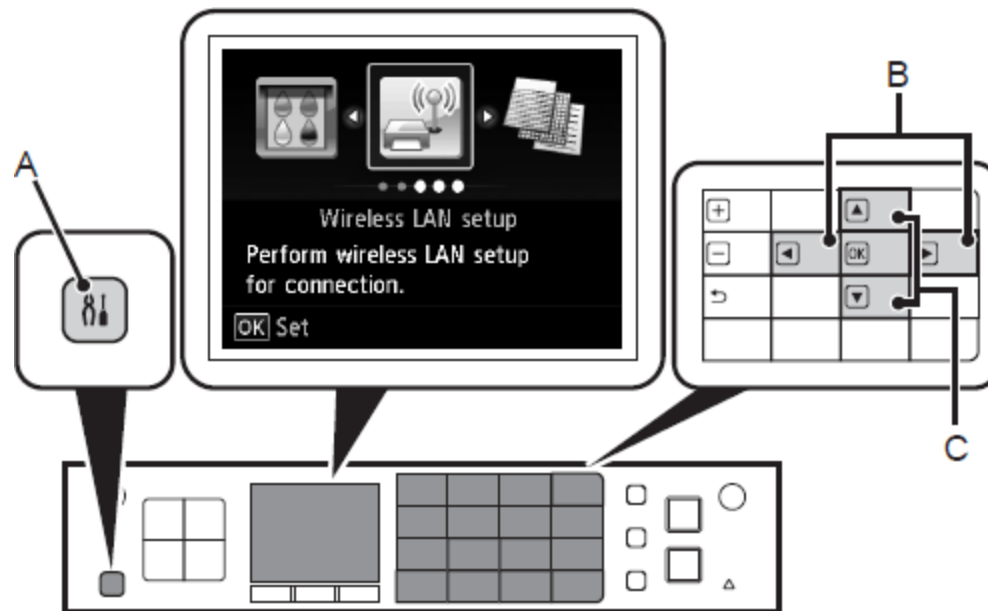
## Adding Your Multifunction to Your Network

### Step One

Press the **Setup** button (A)

### Step Two

Use the ◀ or ▶ button (B) to select **Wireless LAN setup**, then press the **OK** button

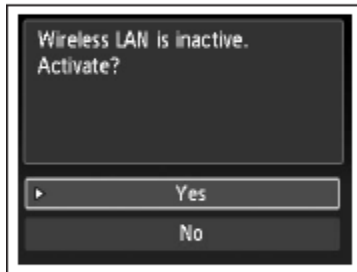


# Adding Your Multifunction to Your Network

## Step Three

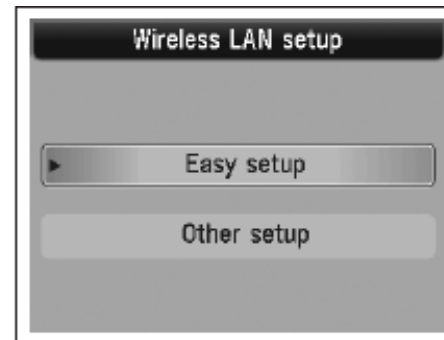
Select **Yes**, then press the **OK** button.

When wireless connection is enabled, the Wi-Fi lamp (D) lights blue.



## Step Four

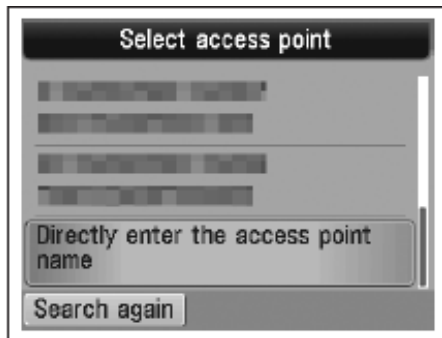
Select **Easy setup**, and then press the **OK** button.



# Adding Your Multifunction to Your Network

## Step Five

Select the access point name, then press the **OK** button.



**NOTE:** If you are living in an apartment, nearby access points in use may be detected.

## Step Six

Make sure that one of the screens, below, is displayed, then press the **OK button**.

If the following screen is not displayed, go to step 9



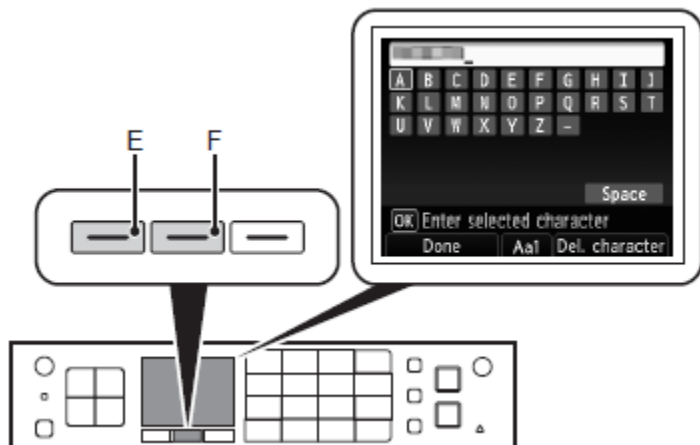


# Adding Your Multifunction to Your Network

## Step Seven

Enter the network key you wrote down, then press the left **FUNCTION** button (E).

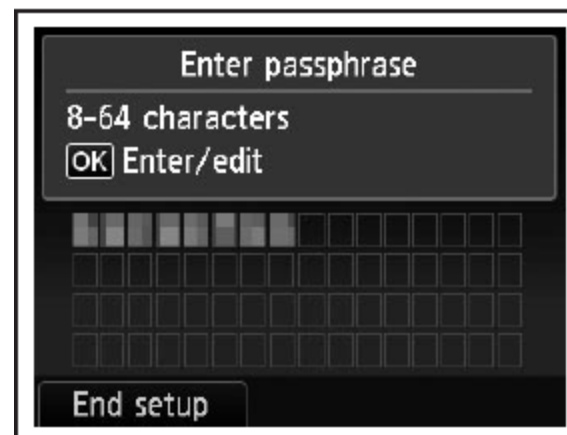
Press the center **FUNCTION** button (F) to switch character entry modes.



Network key entry is case-sensitive. Be sure to enter upper and lower case letters correctly.

## Step Eight

Make sure that the network key is correct, then press the left **FUNCTION** button. (below End setup)



# Adding Your Multifunction to Your Network

## Step Nine

When the screen below appears, press the **OK button**.



If **Failed to connect to the access point.** appears, press the **OK button**, make sure that the network key is correct, then enter it again. If a connection still cannot be established, refer to the printed manual: **Network Setup Troubleshooting**.

# Installing the Drivers & Application Software

## Step One

insert the **Setup CD-ROM** into the CD-ROM drive. If the program does not start automatically, double-click the CD-ROM icon in **Computer** or **My Computer**, then doubleclick **MSETUP4.EXE**.

For **Windows 7/Windows Vista**: Click **Run Msetup4.exe** on the **AutoPlay** screen, then click **Yes** or **Continue** on the **User Account Control** dialog box. If the **User Account Control** dialog box reappears in following steps, click **Yes** or **Continue**.



## Step Two

Click **Easy Install**.

The drivers, application software, and on-screen manuals are installed.



# Installing the Drivers and Software

## Step Three

On the next screen click **Install**

Drive C: 431600 MB free space  
Total used space: 628 MB  
Displays the README file:

MP Drivers	220 MB	On-screen Manual	32 MB
My Printer	10 MB	MP Navigator EX	80 MB
Speed Dial Utility	10 MB	Easy-PhotoPrint EX	240 MB
Solution Menu EX	20 MB	Adobe RGB (1998)	1 MB
Easy-WebPrint EX	15 MB		

The listed software programs will be installed. To proceed, click [Install].  
To display an introduction of the software, move the mouse pointer to the software name.

Back Estimated installation time: 10 to 20 minutes **Install**

## Step Four

Select **Use the printer with wireless LAN connection**, then click **Next**.

### Select the printer connection method

Use the printer via USB  
Select this option to use the printer via USB.

**Use the printer with wireless LAN connection**  
Select this option to use the printer with wireless LAN connection.

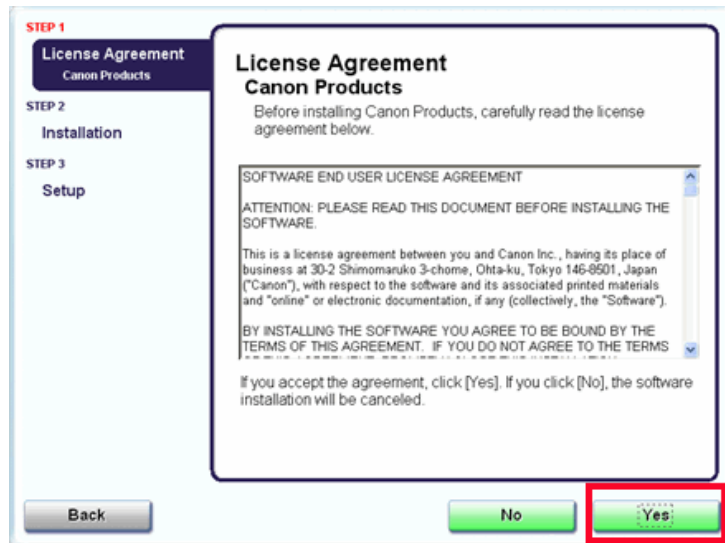
Use the printer with wired LAN connection  
Select this option to use the printer with wired LAN connection.

Back **Next**

# Installing the Drivers & Software

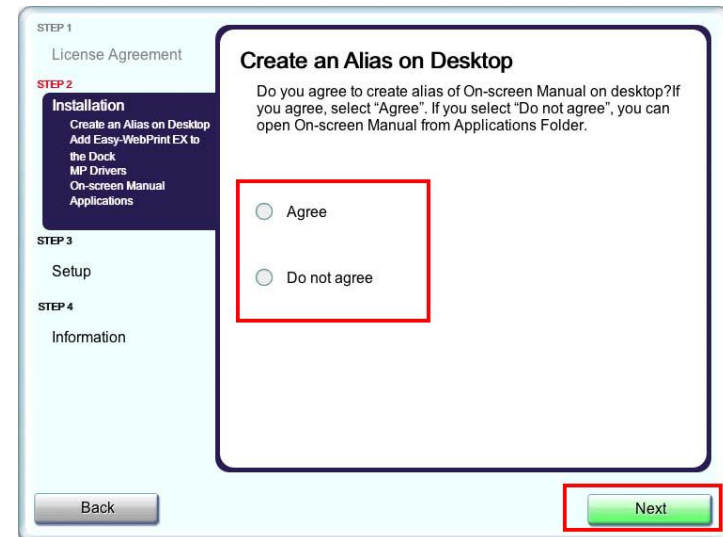
## Step Five

Read the License Agreement screen carefully and click **Yes**.



## Step Six

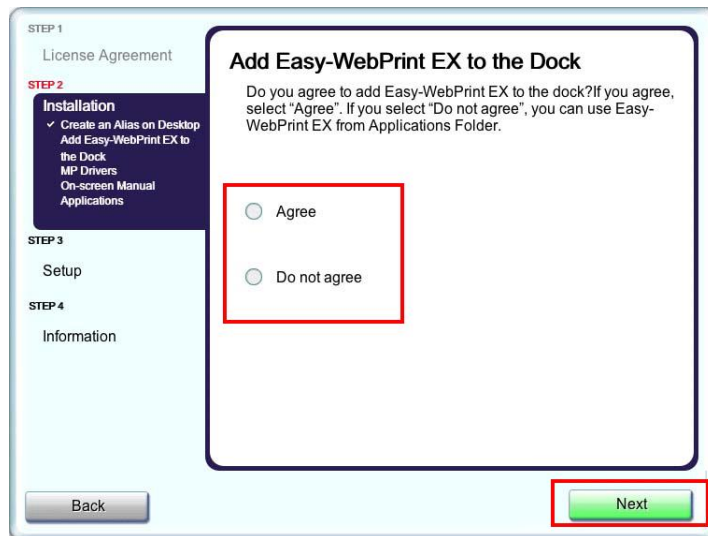
When the **Create an Alias on Desktop** screen appears, select **Agree** if you want an alias of the On-Screen manual to be placed on the desktop, otherwise select Do not Agree, then click **Next**



# Installing the Drivers & Software

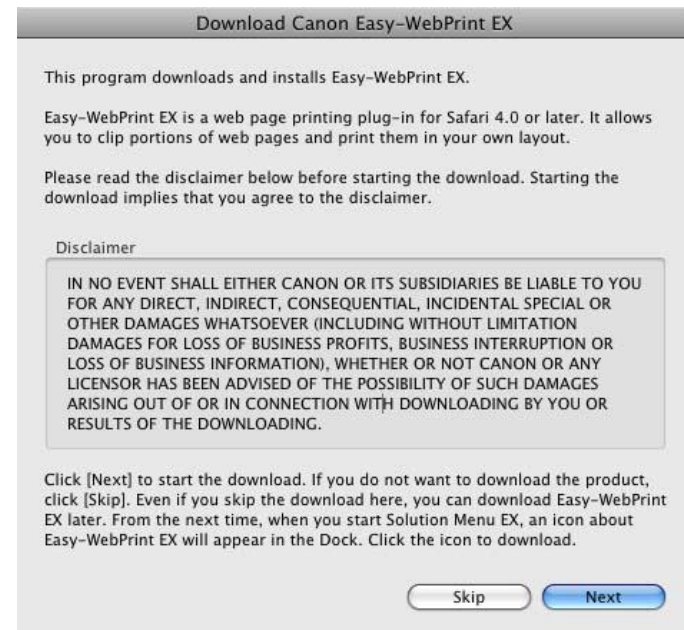
## Step Seven

Select **Agree** or **Do not Agree** on the **Add Easy-WebPrint EX to the Dock** screen, then click **Next**



## Step Eight

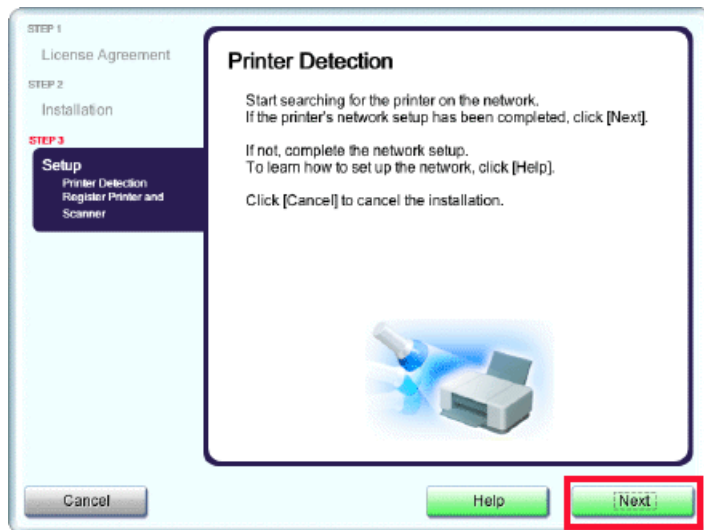
Click **Skip** or **Next** on the Download Easy-webPrint screen



# Installing the Drivers & Software

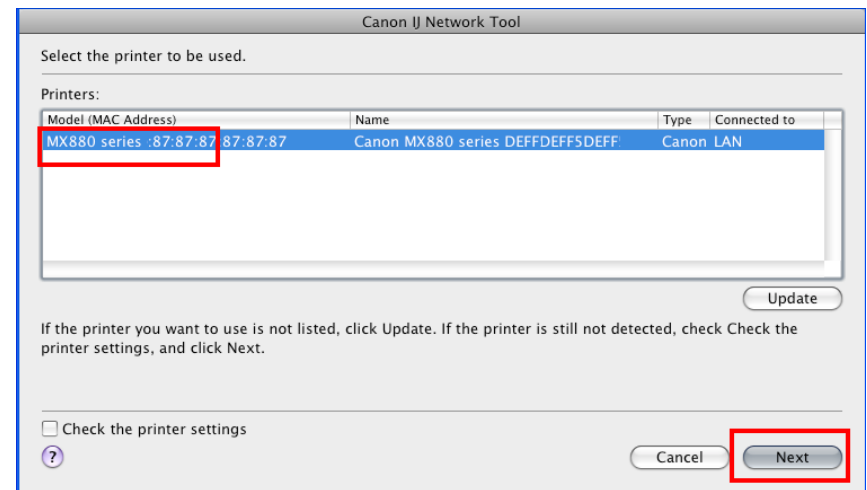
## Step Nine

When the **Printer Detection** screen appears, click **Next**



## Step Ten

On the **Canon IJ Network Tool** screen, select **MX880 series** in **Printers** and click **Next**



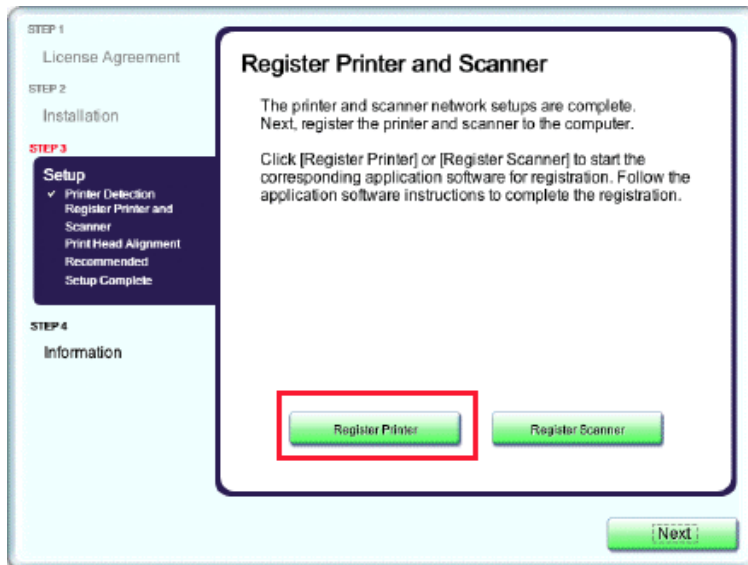
# Registering the Printer & Scanner

## Registering the Printer & Scanner

This section describes how to register the machine on a Macintosh computer.

### Step One

When the **Register Printer and Scanner** screen appears, click **Register Printer**.



**Proceed to the section that relates to your operating system for further installation instructions**

Mac OS X v. 10.5.x / 10.6.x: Go to Step **2-A**

Mac OS X v. 10.4.11: Go to Step **2-B**

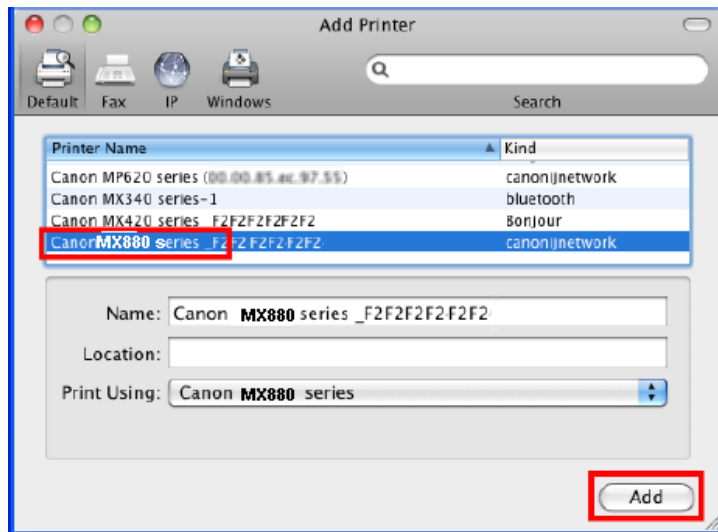


# Registering the Printer & Scanner

## Step Two

### 2-A

1. Select **Canon MXxxx series** in the list of printers, then click **Add** . \*xxx refers to the model number. **MX880 series** shown in example, below



2. Go to Step Three, page 20.

\*The alphanumeric characters after Canon xxxx series is the machine's Bonjour service name or MAC address

## Step Two

### 2-B (OS X v. 10.4.11)

1. When the **Printer List** window appears, click **Add**.

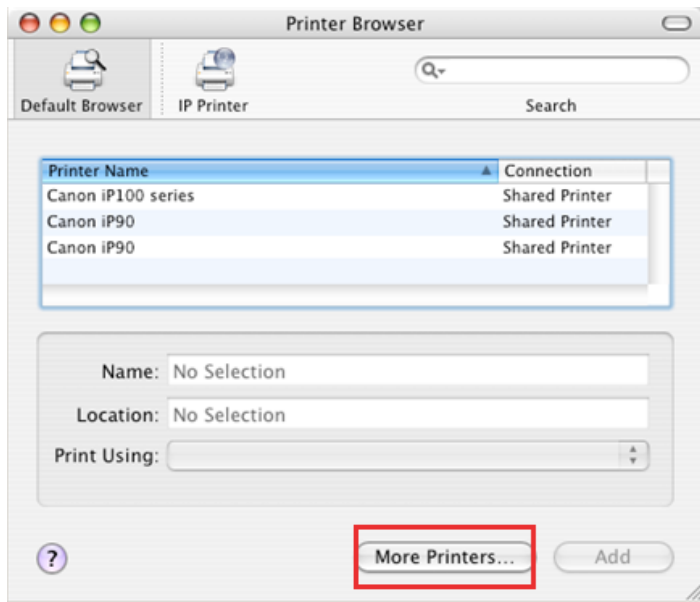


# Registering the Printer & Scanner

## Step Two

2-B

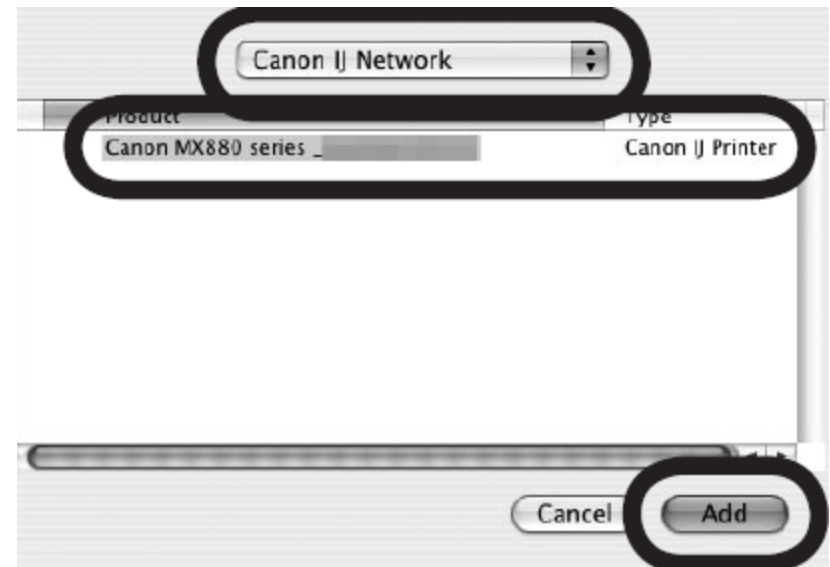
2. Click **More Printers** in the **Printer Browser** window.



## Step Two

2-B

3. Select **Canon IJ Network** in the pop-up menu, select **Canon MXxxx series** in the list of printers, then click **Add**. \*xxx refers to the model number. **MX880 series** shown in example, below



# Registering the Printer & Scanner

## Step Two

2-B

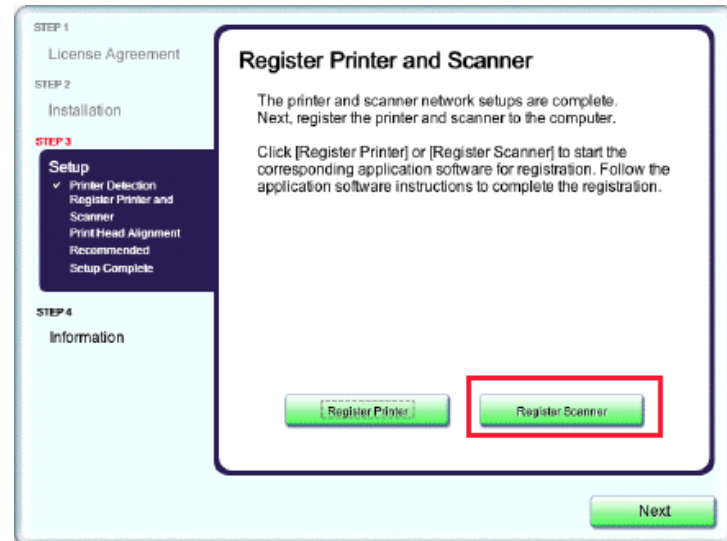
4. Make sure that the **Canon MXxxx series** is added to the list of printers.



\***xxx** refers to the model number. MX880 series shown in above example.

## Step Three

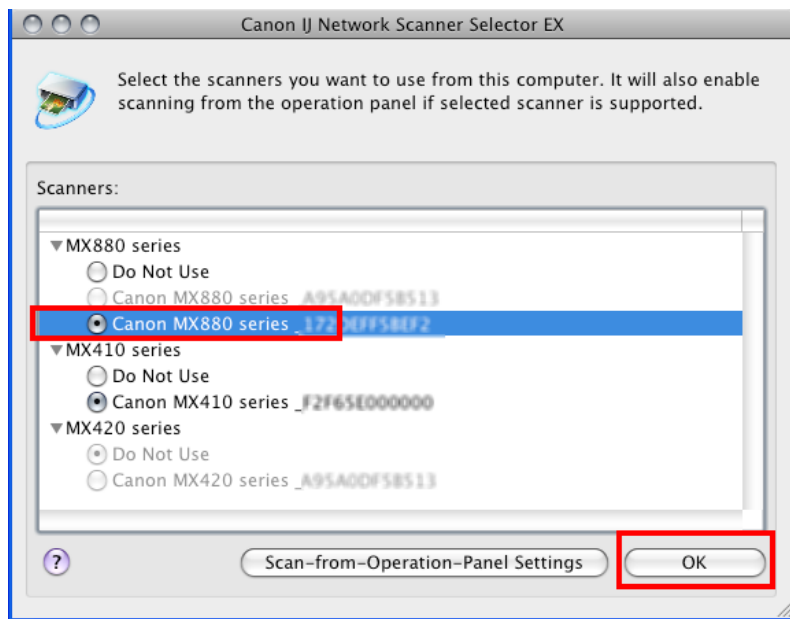
When the **Register Printer and Scanner** screen appears, click **Register Scanner**.



# Registering the Printer & Scanner

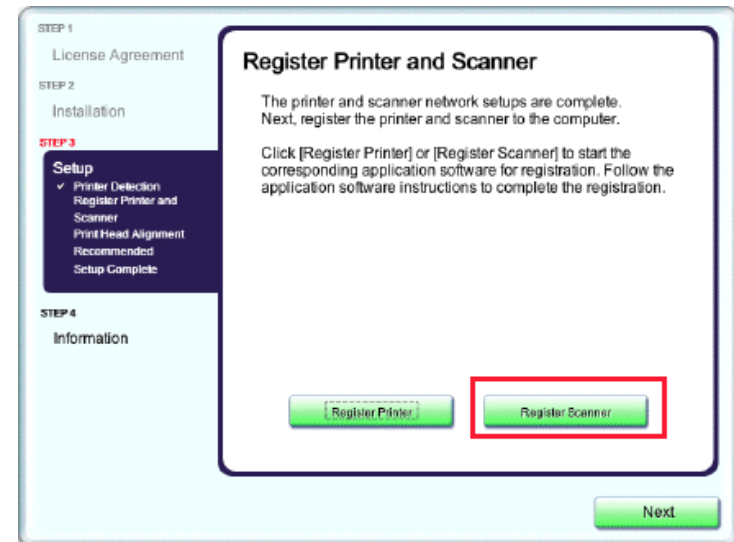
## Step Four

Select **Canon MX880 series** on the **Canon IJ Network Scanner Selector EX** screen, then click **OK**



## Step Five

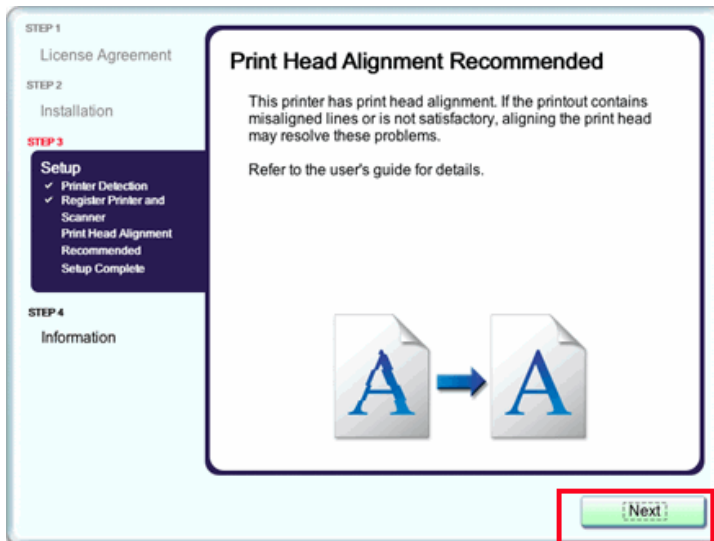
Click **Next** on the **Register Printer and Scanner** screen.



# Registering the Printer & Scanner

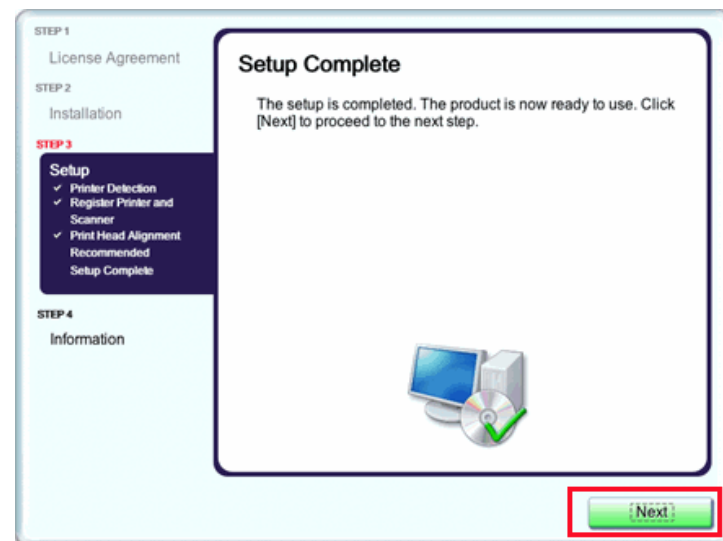
## Step Six

Click **Next** on the **Print Head Alignment Recommended** screen.



## Step Seven

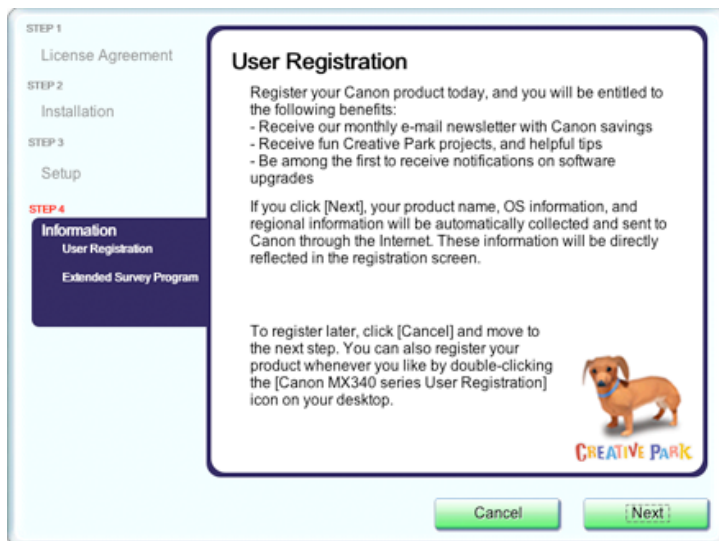
Click **Next** on the **Register Printer and Scanner** screen.



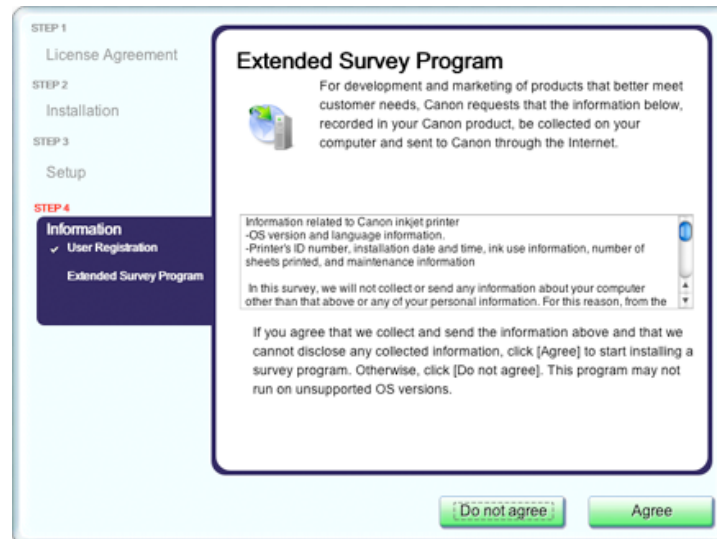
# Registering the Printer & Scanner

## Step Eight

If the **User Registration** screen appears, read the information and click **Next** or **Cancel**.



If the **Extended Survey Program** screen appears: If you can agree to Extended Survey Program, click **Agree**. If you click **Do not agree**, the Extended Survey Program will not be installed. (This has no effect on the machine's functionality.).



# Registering the Printer & Scanner

## Step Nine

Click **Exit**. Setup is complete



\*It is necessary to restart the computer before scanning using the Operation Panel on the machine for the first time.