

Installing Your Multifunction to Your Network for the First Time

PIXMA MX340

Windows OS

Installing Your Multifunction to Your Network for the First Time

PIXMA MX340
Windows OS

Preparing to Connect My Multifunction to My Network	3
Network Requirements	3
Important Information You Need Before Adding Your Multifunction	4
Downloading & Installing the Drivers	5
Download the Driver	5
Installing the Driver	8

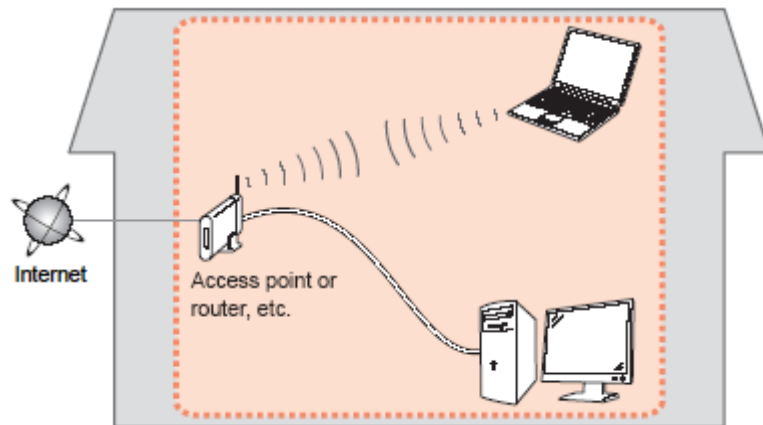
Preparing to Connect My Multifunction To My Network

[<< Previous](#)

[Next >>](#)

Network Requirements

Before connecting the machine to the network, make sure that configuration of the computer and access point or router is complete, and that the computer is connected to the network.



Notes on Network Connection

- The configuration, router functions, setup procedures and security settings of the network device vary depending on your system environment. For details, refer to your device's instruction manual or contact its manufacturer.
- The machine cannot be used over a wireless and wired connection at the same time.

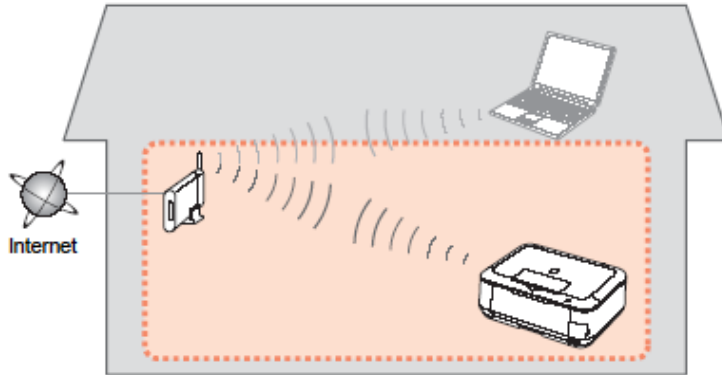
Wireless Connection

Connect to your network environment over a wireless connection.

Preparing to Connect My Multifunction To My Network

[<< Previous](#)

[Next >>](#)



An "Ad-hoc connection," which establishes a direct connection to the computer over a wireless connection without using an access point, is not supported.

Be sure to prepare an access point.

Important Information You Need Before Adding Your Multifunction

The following information is required to connect to your access point or router.

- **Access Point Name/Network Name:**

Also referred to as **SSID**. A name to identify the specific access point.

- **Network Key:**

Also referred to as encryption key, WEP key or WPA/WPA2 passphrase, Pre-Shared key.

A password required to set to prevent unauthorized access to communication.

Check your access point or router for the following information, and then write it down.

NOTE: For details on how to check the following information, refer to the manual of your access point or router, or contact its manufacturer.

Downloading the Driver

To use the machine by connecting it to a computer, software including the drivers needs to be copied (installed) to the computer's hard disk. The installation process takes about 20 minutes. (The installation time varies depending on the computer environment or the number of applications to be installed.)

Step One

[Go to the Drivers & Software for your model](#)

Step Two

Select your operating system in the **Select OS** dropdown menu.

Drivers & Software

Choose an operating system from the drop down menu then select the appropriate driver or software from the list below

Choose Operating System:


Select OS	Downloaded	File Size
Select OS		
Windows 7		
Windows 7 (x64)		
Windows Vista		
Windows Vista (x64)		

Firmware

No firmware updates are available for

Step Three

In the Drivers section, click Download icon for the **MP Driver**.

▼ Drivers			
File Description	Post Date	Size	Download
<input type="checkbox"/> MX340 series MP Driver Ver. 1.04 (Windows 7/7... File Name: mp68-win-mx340-1_04-ea24.exe	02/10/11	29.69MB	
This product is a driver for Canon IJ multifunction printers. IJ Network Tool is included in this MP Driver.			

Step Four

On the next screen, read the information and instructions and click **I Agree - Begin Download**
Once the file has been downloaded, double-click it to begin the installation process

IMPORTANT:

- Quit all running applications before installation.
- Log on as the administrator (or a member of the Administrators group).
- Do not switch users during the installation process.
- Internet connection may be required during the installation. Connection fees apply.
- It may be necessary to restart your computer during the installation process. Follow the on-screen instructions. The installation resumes once your computer has restarted.

If the firewall function of your security software is turned on, a warning message may appear that Canon software is attempting to access the network. If such a warning message appears, set the security software to always allow access.

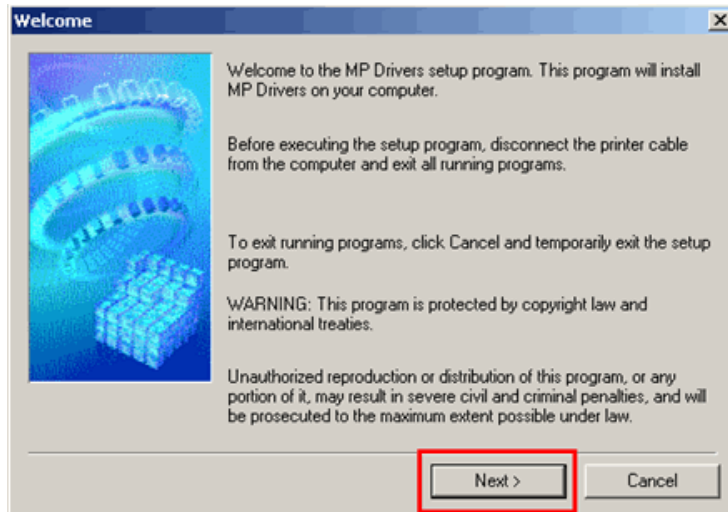
Installing the Driver

NOTE: If a **User Account Control** screen appears, click **Continue** or **Yes** (depending on Windows version) to continue.

NOTE: If the same screen reappears in subsequent steps, click **Continue** or **Yes**.

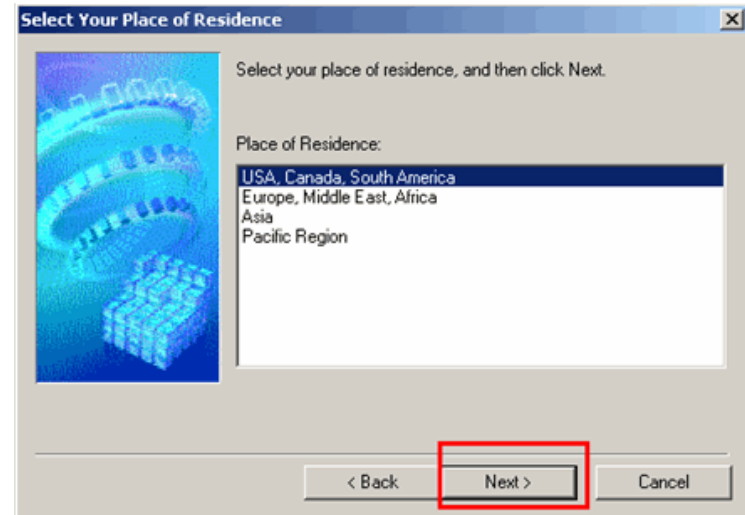
Step One

Click **Next** on the **Welcome** screen.



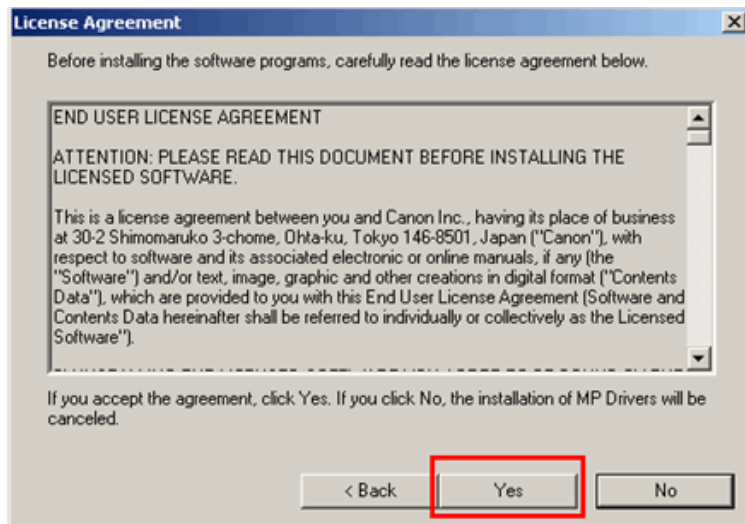
Step Two

Select your place of residence and click **Next**.



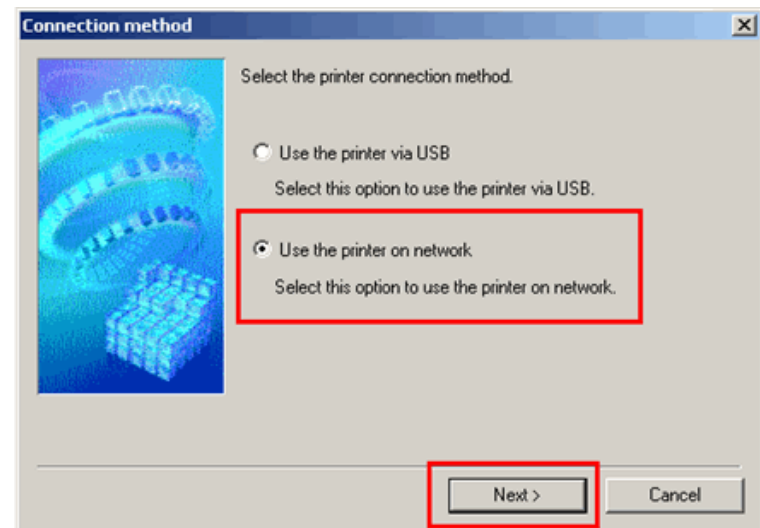
Step Three

Click **Yes** for the License Agreement.



Step Four

After searching for printers, the **Detected Printers List** appears. Verify your printer is detected and click **Next**.

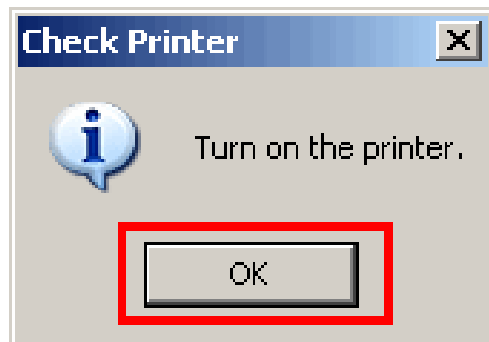


If the **Please Allow All Install Wizard Processes** screen appears, click **Next**.

Installation starts. Follow any on-screen instructions to install the software.

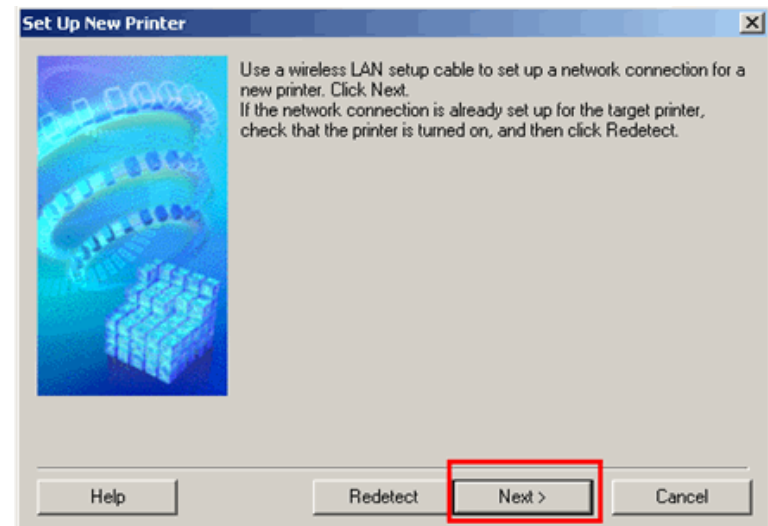
Step Five

Turn on the printer then click **OK**..



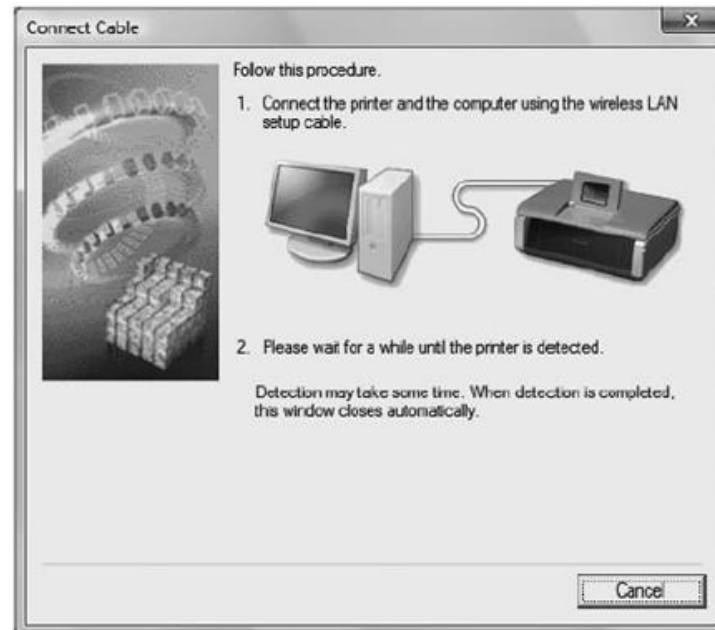
Step Six

Click **Next** on the **Set Up New Printer** window.



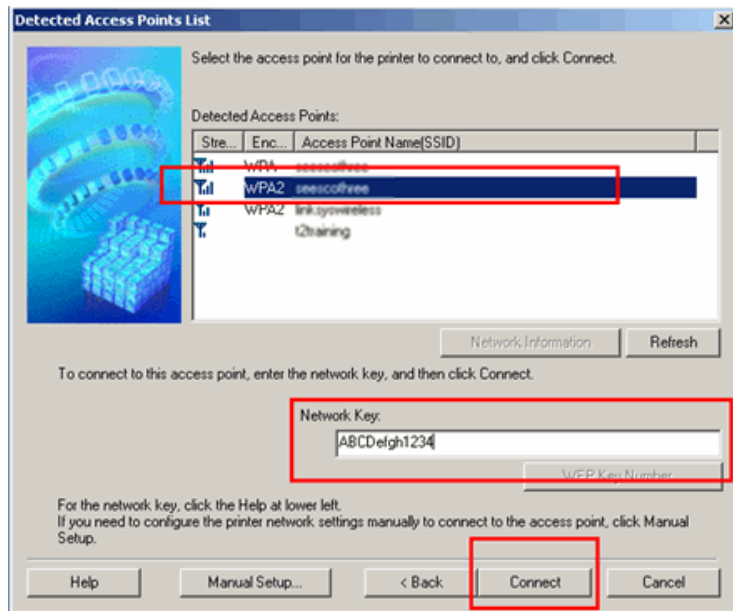
Step Seven

If the **Confirm Connection Access Point** screen appears, make sure that the target access point is displayed, then click **Yes**.



Step Eight

If the **Detected Access Points List** screen appears, select the target access point name/network name (SSID), enter the network key and click **Connect**.

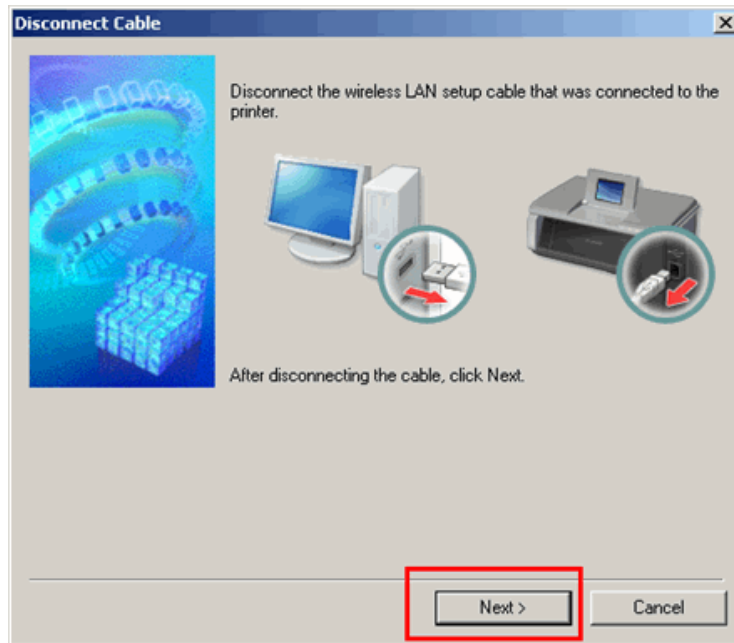


If the **Confirm Connection Access Point** screen appears, make sure that the target access point is displayed, then click **Yes**.



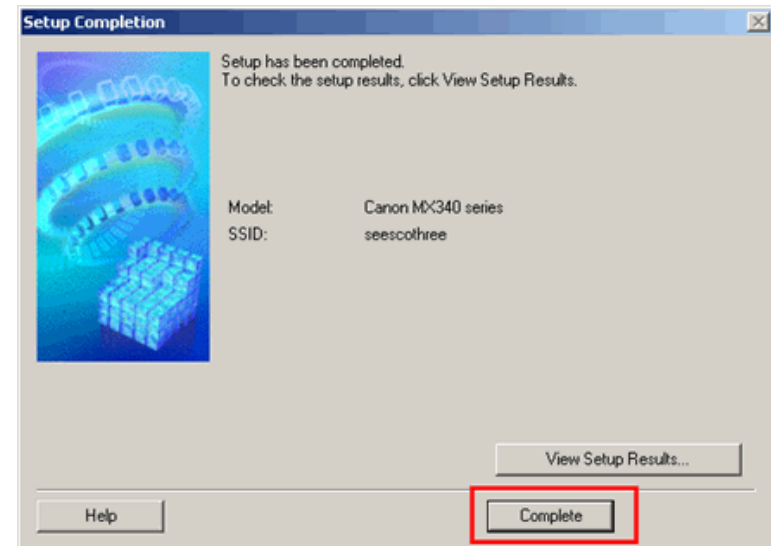
Step Nine

Remove the Wireless LAN setup cable, then click **Next**.



Step Ten

Click **Complete** on the **Setup Completion** screen.



Wireless setup is now complete