

# **Getting Your Multifunction Back On Your Network After A Router Or Network Change**

**PIXMA MP495**

**Windows OS**

If any of the following situations exist, you will need to Uninstall and Re-Install the MP Drivers

- You have replaced your Router or Access Point
- You want to use a different wireless network
- Router settings have been changed.

# Uninstalling and Re-installing Your Multifunction to Your Network

PIXMA MP495

Windows OS

<b>Uninstalling the Multifunction Drivers</b>	4
<b>Preparing to Connect My Multifunction to My Network</b>	6
Network Requirements	6
Notes on Wireless Connection	7
<b>Installing the Drivers &amp; Software</b>	8

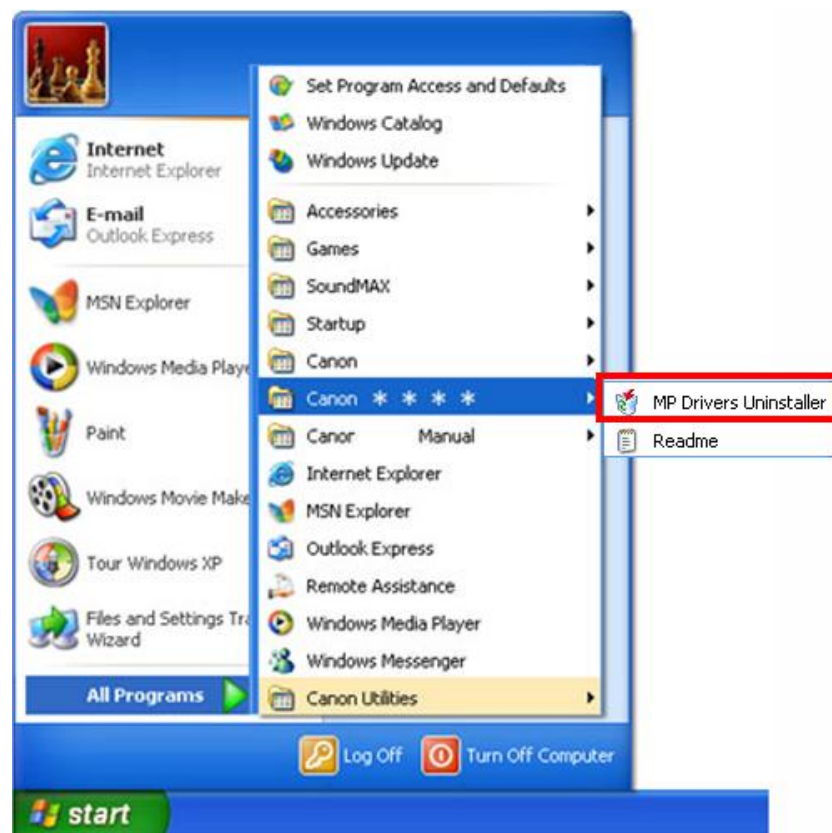
# Uninstalling the Multifunction Drivers

[<< Previous](#)

[Next >>](#)

Note: Login as a user with Administrator privileges to uninstall . Turn off any programs running in the background, such as antivirus programs and firewalls before beginning.

1. Select 'All Programs' (for Windows XP / Vista / 7) from the Start menu.
2. Select the name of the printer model to remove and select 'MP Drivers Uninstaller.'

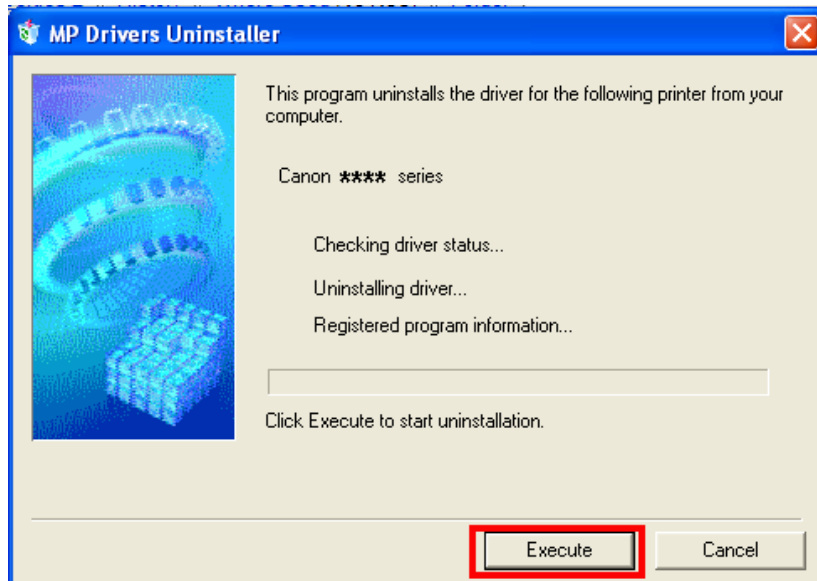


# Uninstalling the Multifunction Drivers

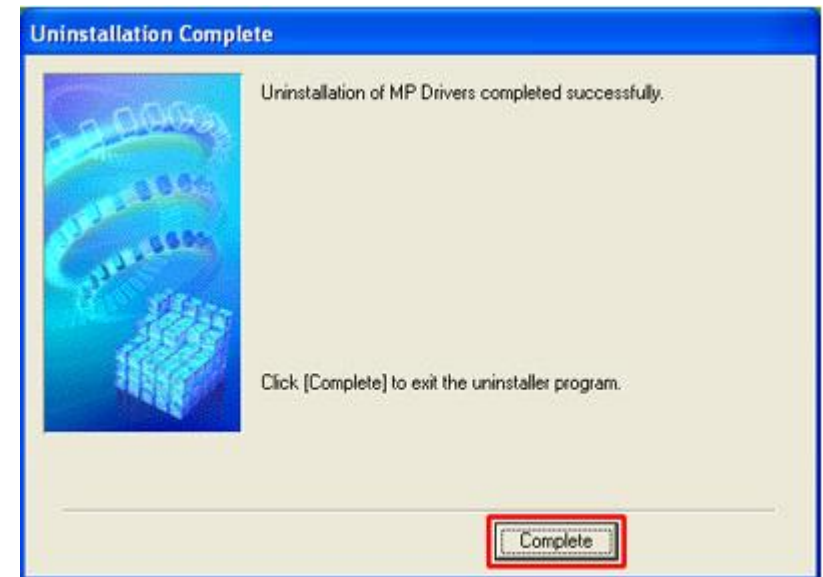
[<< Previous](#)

[Next >>](#)

3. When the MP Drivers Uninstaller window is displayed, click 'Execute.'



4. When the confirmation window is displayed, click 'Yes.'
5. When the Uninstallation Complete window is displayed, click 'Complete.'



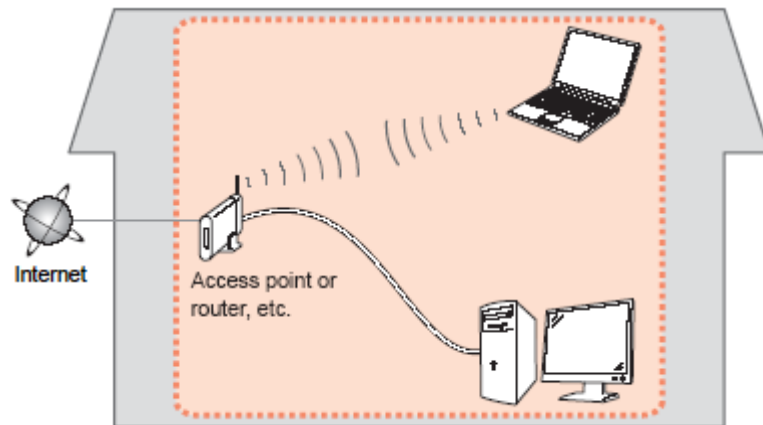
# Preparing to Connect My Multifunction To My Network

[<< Previous](#)

[Next >>](#)

## Network Requirements

Before connecting the machine to the network, make sure that configuration of the computer and access point or router is complete, and that the computer is connected to the network.



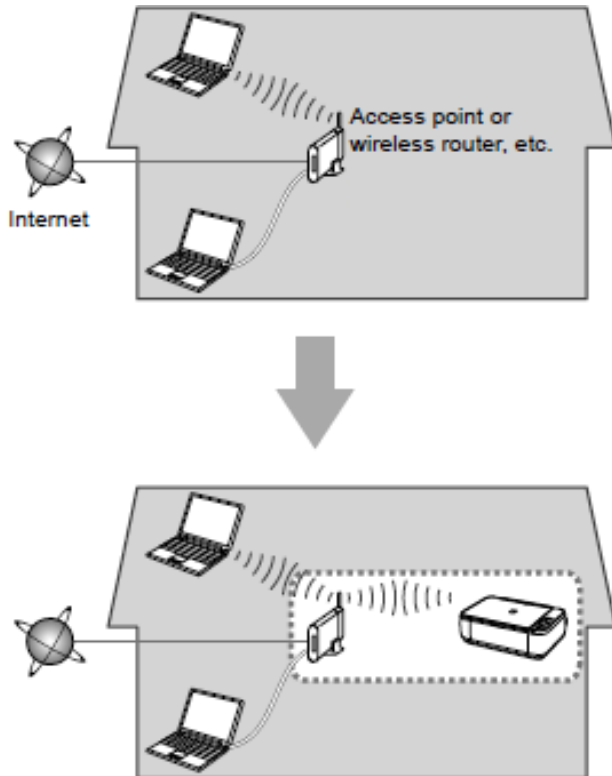
## Wireless Connection

Before connecting the machine to the network, the computer needs to be connected to the network. Make sure that configuration of the computer and access point or router is complete.

# Preparing to Connect My Multifunction To My Network

[<< Previous](#)

[Next >>](#)



An "Ad-hoc connection," which establishes a direct connection to the computer over a wireless connection without using an access point, is not supported.

## Notes on Network Connection

- The configuration, router functions, setup procedures and security settings of the network device vary depending on your system environment. For details, refer to your device's instruction manual or contact its manufacturer.
- In an office setup, consult your network administrator
- If you connect to a network that is not protected with security measures, there is a risk of disclosing data such as your personal information to a third party.
- If an error message appears or if you have trouble with the network connection, refer to the printed manual: Network Setup Troubleshooting.
- Place the machine and computer on the same network segment.

## Software Installation

To use the machine by connecting it to a computer, software including the drivers needs to be copied (installed) to the computer's hard disk. The installation process takes about 20 minutes. (The installation time varies depending on the computer environment or the number of application software to be installed.)

### **IMPORTANT**

- Log on as the administrator (or a member of the Administrators group).
- Quit all running applications before installation.
- Do not switch users during the installation process.
- Internet connection may be required during the installation. Connection fees may apply. Consult the internet service provider.
- It may be necessary to restart your computer during the installation process. Follow the on-screen instructions and do not remove the Setup CD-ROM during restarting. The installation resumes once your computer has restarted.
- If the firewall function of your security software is turned on, a warning message may appear that Canon software is attempting to access the network. If such a warning message appears, set the security software to always allow access.



## Installing the Drivers & Software

If you connect the machine via wireless LAN setup cable before installing the software:

### *For Windows 7*

1. Remove the wireless LAN setup cable connected to your computer.
2. Proceed to Step 1.

### *For Windows Vista/Windows XP*

1. Remove the wireless LAN setup cable connected to your computer. If the dialog box closes, proceed to Step 1.
2. Click Cancel.
3. Proceed to Step 1.



**Do not** connect the USB cable yet. Software installation requires temporary use of the USB cable.

## Step One

Turn on the computer, then insert the Setup **CD-ROM** into the CD-ROM drive. If you are using Windows, the setup program starts automatically.



### Note:

If the program does not start automatically, double-click the CD-ROM icon in Computer or My Computer. When the CD-ROM contents appear, double-click MSETUP4.EXE.

## Step Two

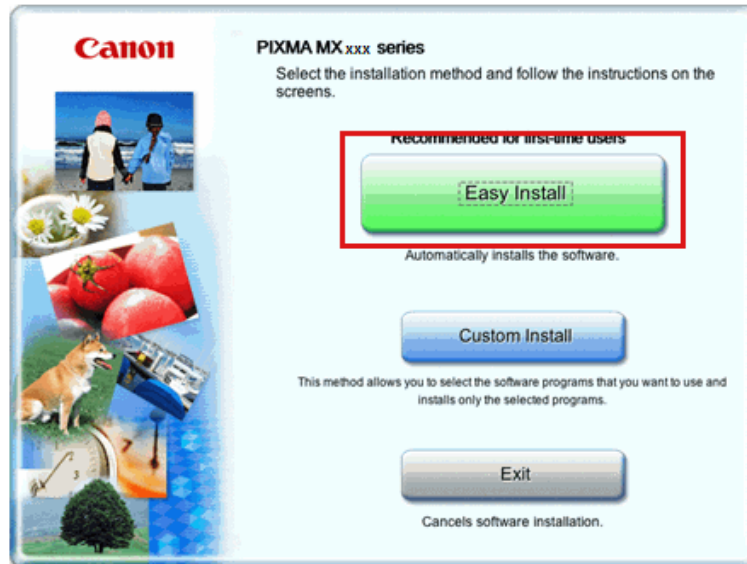
Click Run Msetup4.exe on the AutoPlay screen, then click **Yes or Continue** on the User Account Control dialog box.

If the User Account Control dialog box reappears in following steps, click **Yes or Continue**.

## Step Three

Click **Easy Install**

The drivers, application software, and on-screen manuals are installed.

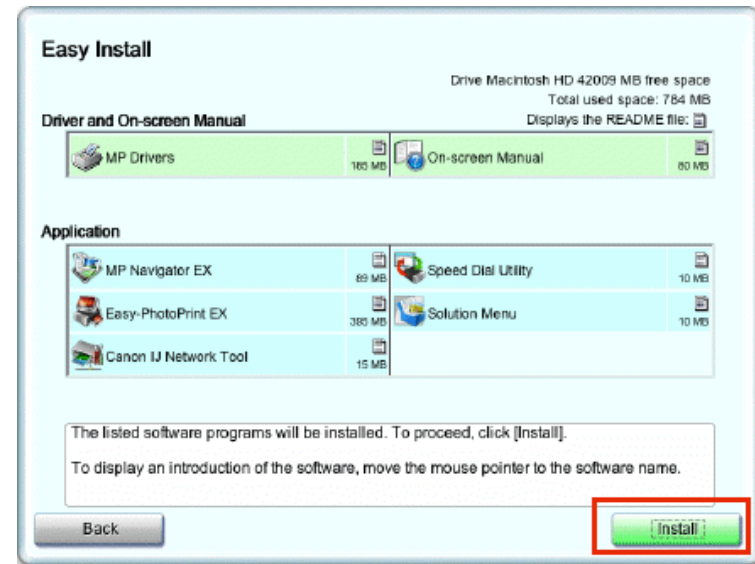


Note:

If you want to select particular items to install, click Custom Install.

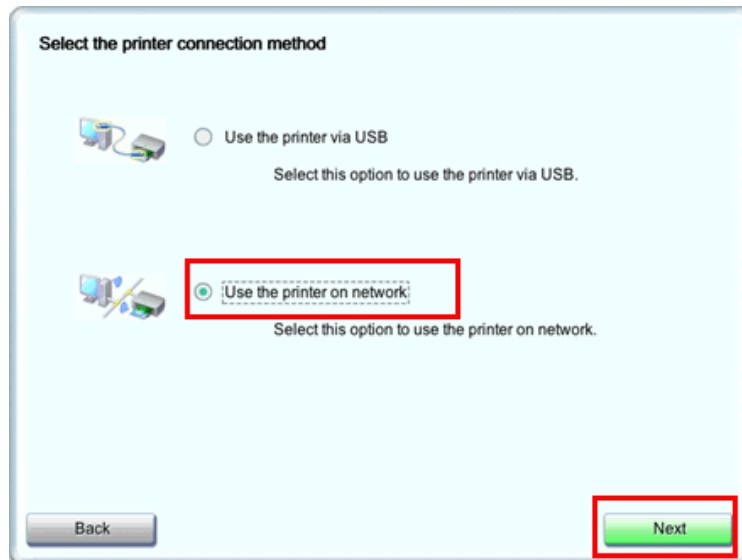
## Step Four

Click **Install**



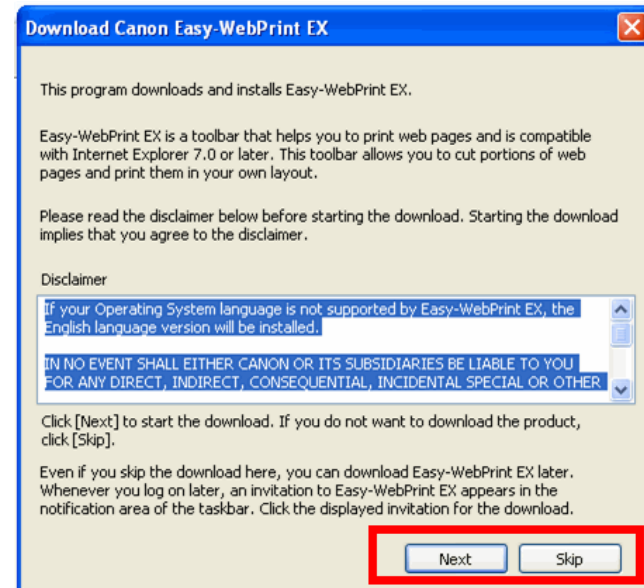
## Step Five

Select Use the printer on network, then click **Next**.



## Step Six

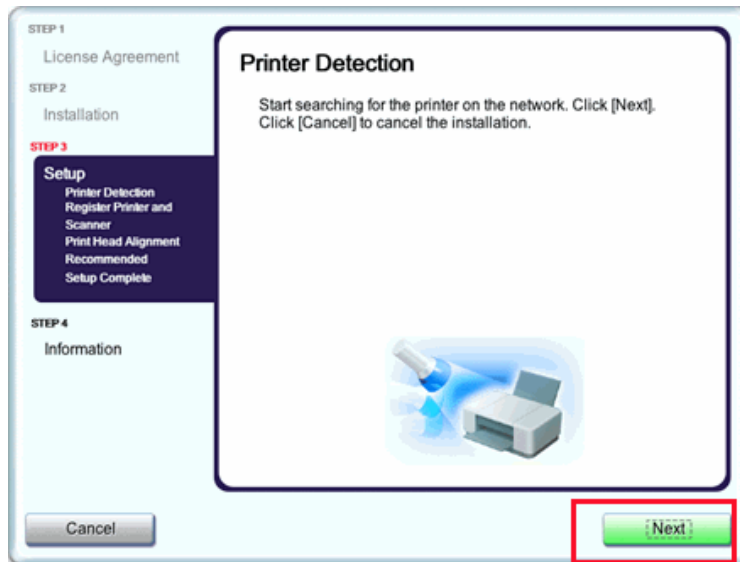
**Easy-WebPrint EX** is Web print software that is installed on the computer when installing the supplied software. Internet Explorer 7 or later is required to use this software. An Internet connection is required for installation.



Select **Next** or **Skip**. Selecting **Next** will download and install the Easy-WebPrint EX software.

## Step Seven

When the Printer Detection screen appears, click **Next**.



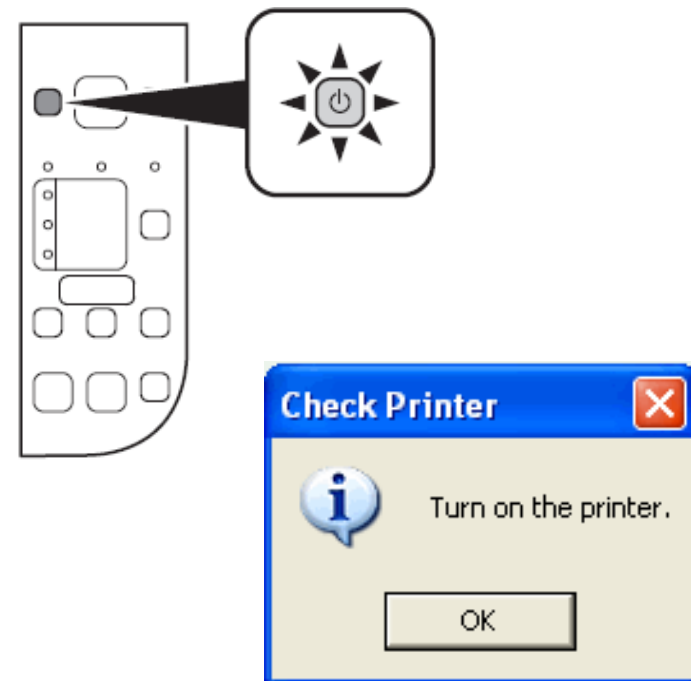
### IMPORTANT

If the Printer Connection screen appears instead of the screen above, the connection method is not correctly selected in 5.

Follow on-screen instructions and proceed with the installation. Click Exit on the installation complete screen, then start again from 2 and be sure to select Use the printer on network in 5.

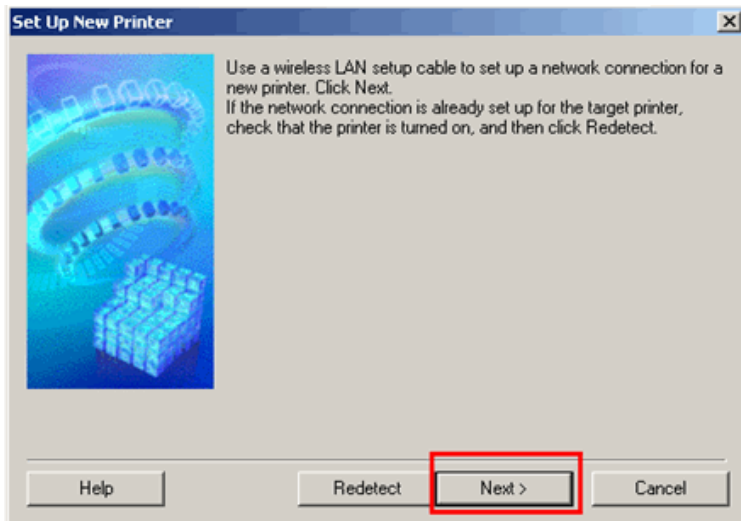
## Step Eight

Make sure the machine is turned on, then click **OK**.



## Step Nine

When the **Set Up New Printer** screen appears, click **Next**.

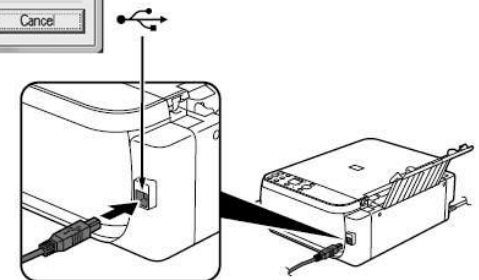
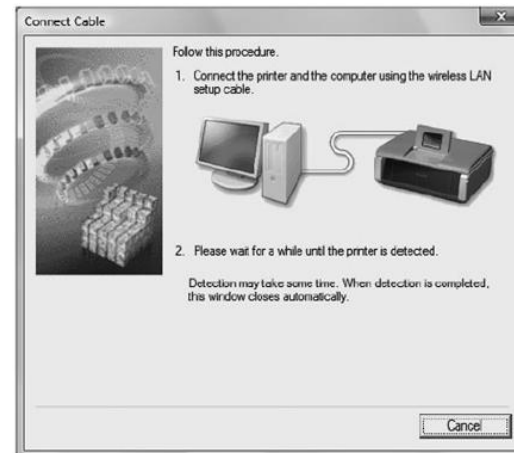


### Note:

If the Detected Printers List screen appears, click Set Up New Printer.

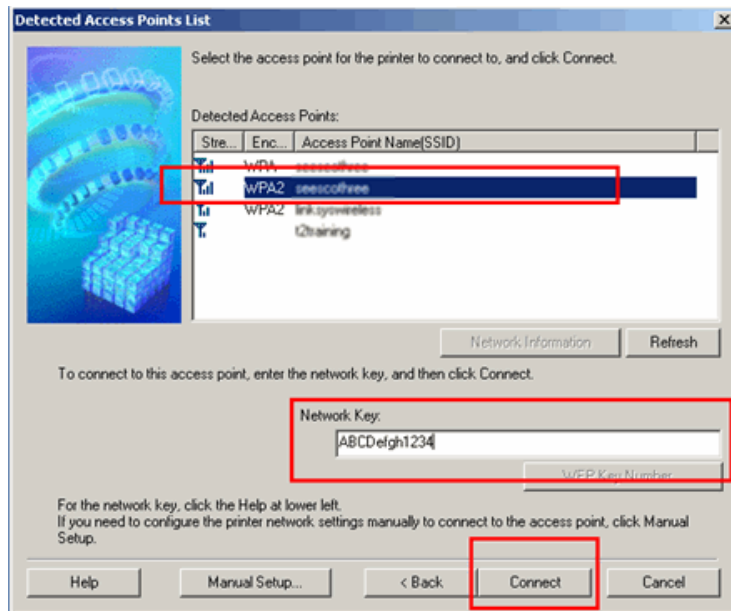
## Step Ten

When the Connect Cable screen appears, connect the machine to the computer with the wireless LAN setup cable



## Step Eleven

If the **Detected Access Points List** screen appears, select the target access point name/network name (SSID), enter the network key and click **Connect**

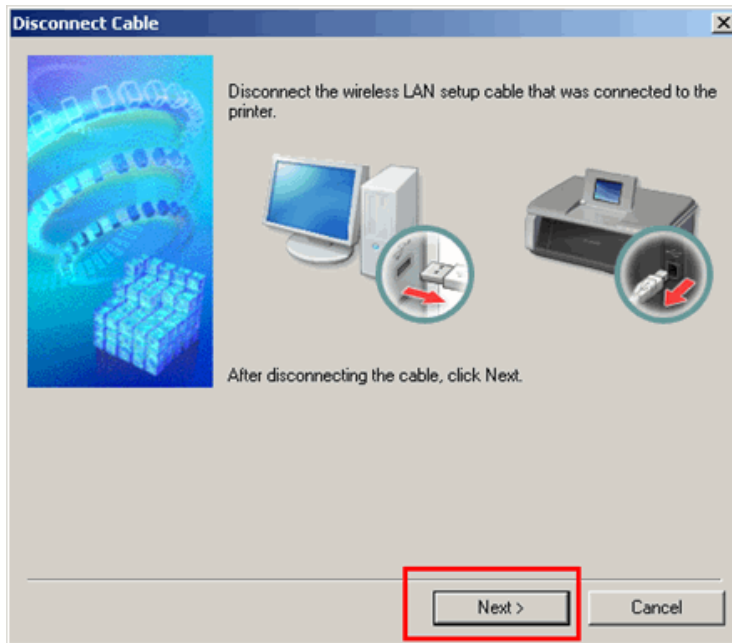


If the **Confirm Connection Access Point** screen appears, make sure that the target access point is displayed, then click **Yes**.



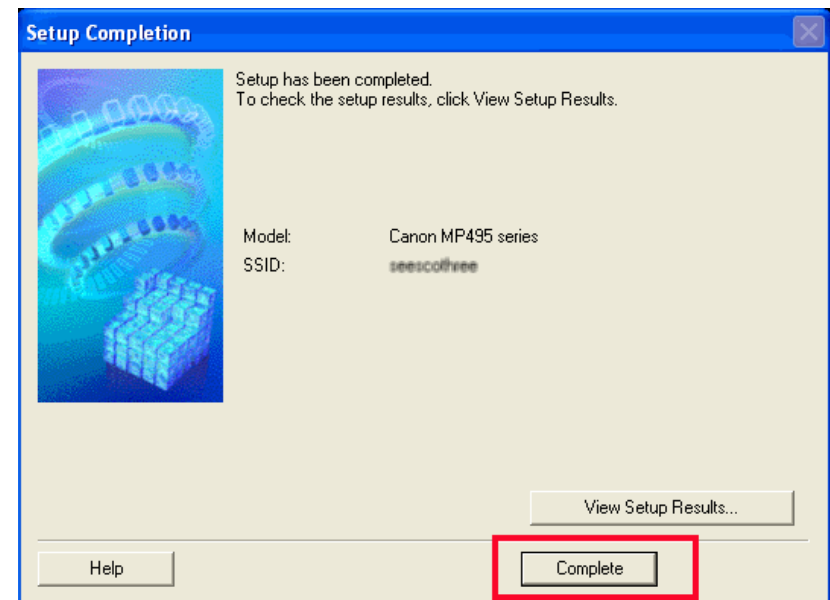
## Step Twelve

When the Disconnect Cable screen appears, remove the wireless LAN setup cable, then click **Next**.



## Step Thirteen

Click **Complete** on the **Setup Completion** screen.

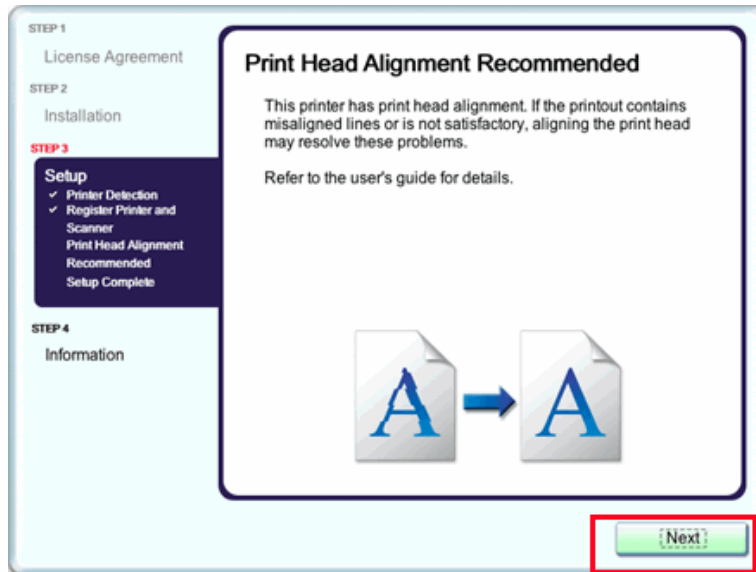


Wireless setup is now complete



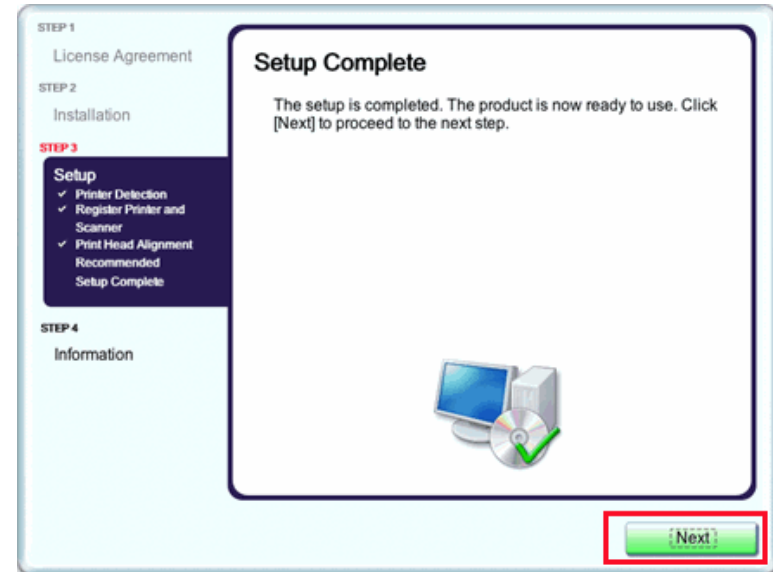
## Step Fourteen

Click **Next** on the **Print Head Alignment Recommended** screen.



## Step Fifteen

Click **Next** on the **Setup Complete** screen. At this point, setup is complete.



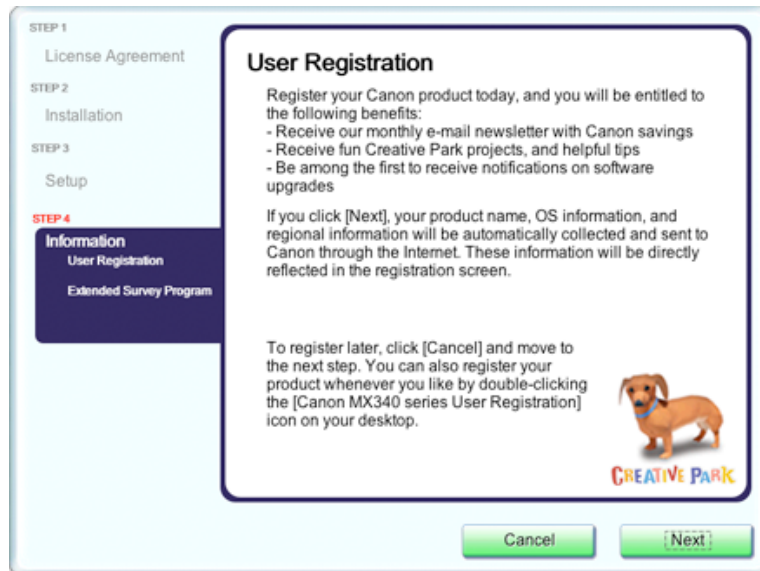
# Installing the Drivers & Software

[<< Previous](#)

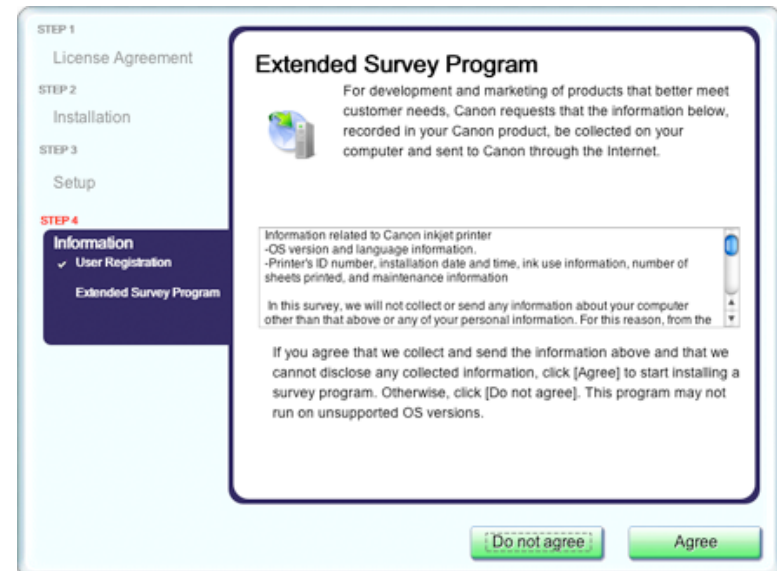
[Next >>](#)

## Step Sixteen

If the **User Registration** screen appears, read the information and click Next or Cancel



If the **Extended Survey Program** screen appears: If you can agree to Extended Survey Program, click **Agree**. If you click **Do not agree**, the Extended Survey Program will not be installed. (This has no effect on the machine's functionality.)



## *Step Seventeen*

Click **Exit**.

