



Connecting to a Wireless LAN using WPS

## Connecting to a Wireless LAN Using WPS

Wi-Fi Protected Setup (WPS) is a way to easily make the various settings for connecting a device to a wireless LAN using infrastructure mode. The settings for things like the SSID and the encryption method, which are necessary for making connections, can be set automatically.

Among WPS-compatible devices, there are those that use a push-button approach to making settings and others that use a PIN code.

This section will use the push-button approach to explain the steps involved in connecting to a computer using infrastructure mode.

The steps are the same when connecting to a smartphone using infrastructure mode.

### IMPORTANT

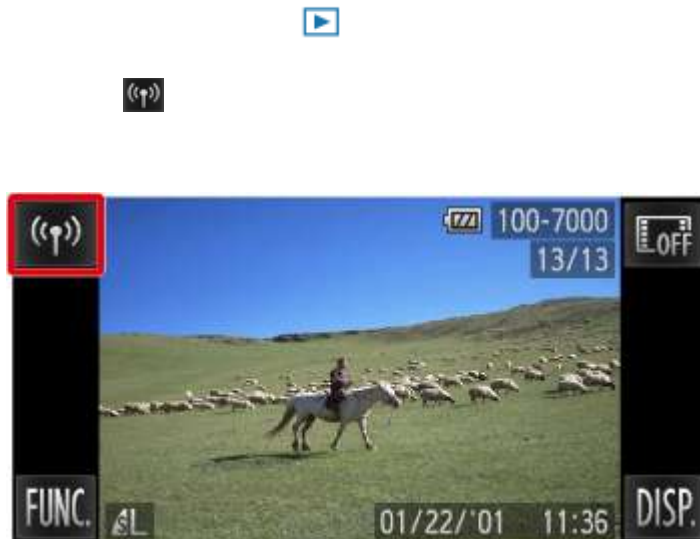
- Connecting a camera to a computer over a wireless LAN requires Windows 7 Service Pack 1 / Mac OS X v10.6.8 or later.

### NOTE

- Refer to the user guide provided with your access point to check if it supports WPS.

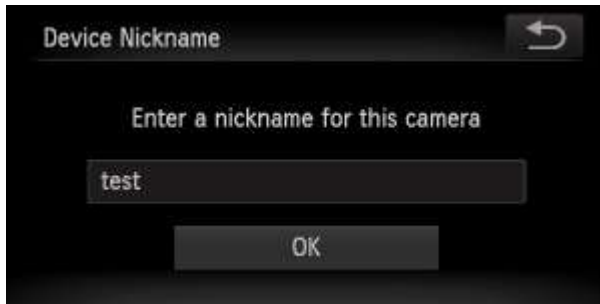
1. Press the <Playback> ( ) button on the camera.

2. Touch ( ).




### NOTE

When making the settings for a wireless LAN for the first time, a screen will appear for you to register a nickname for the camera.




Touch inside the frame, enter a nickname using the keyboard, and then touch [OK].

This nickname will appear on other devices on the wireless LAN when connecting from them.

3. Touch ()



### NOTE

- If connecting to a smartphone, touch ()

## Connecting to a Wireless LAN Using WPS

4. Touch [Add a Device].



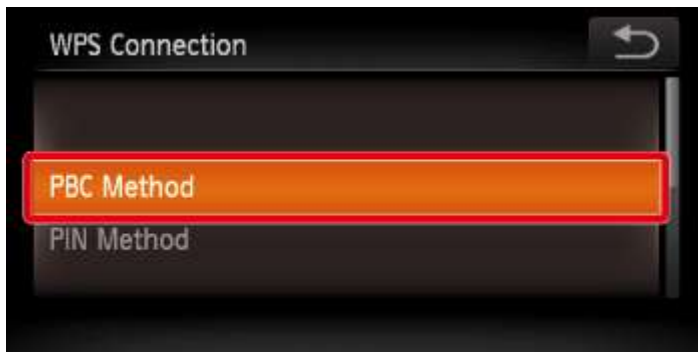
NOTE

- When connecting to a smartphone, a screen for selecting the communication mode will appear, so select [Infrastructure].

5. Touch [WPS Connection].



6. Touch [PBC Method].



## Connecting to a Wireless LAN Using WPS

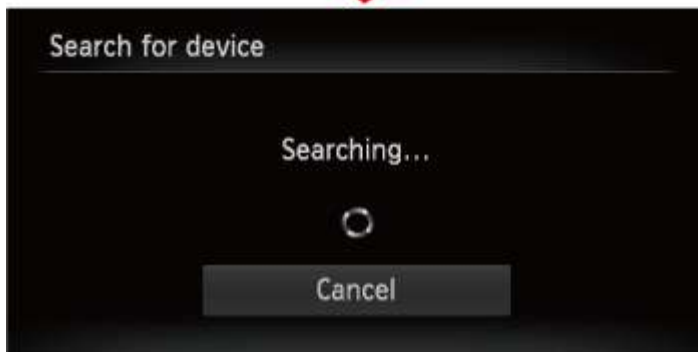
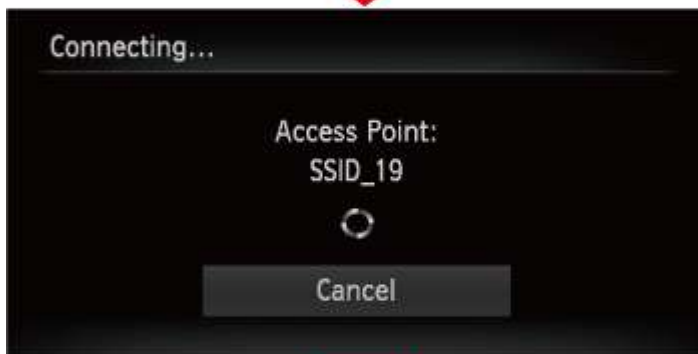
### NOTE

- If you selected [PIN Method] here, set the PIN code on the screen that appears on the access point. Next, select the device to connect to from the [Select a Device] screen. For more details, please see the instruction manual for your access point.
- To add multiple computers, repeat the above procedures starting from step 4.
- To end the connection, touch the (↶) in the top-right corner of the screen, and then touch [OK] on the confirmation screen.

7. Press and hold down the WPS connection button on the access point device, and then touch [Next].



8. The following screen appears.



## Connecting to a Wireless LAN Using WPS

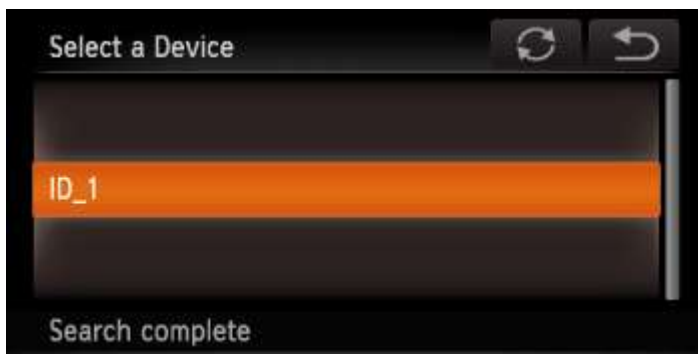
### NOTE

If connecting to a smartphone, the following screen appears.



Start [CameraWindow] on the smartphone.

9. If the device you want to connect to is found, a screen like the one below will appear.



Touch the device you want to connect to.

### NOTE

If a screen like the one below appears, check the settings on the device you want to connect to.

After checking the settings, touch [Search Again] to retry the connection.



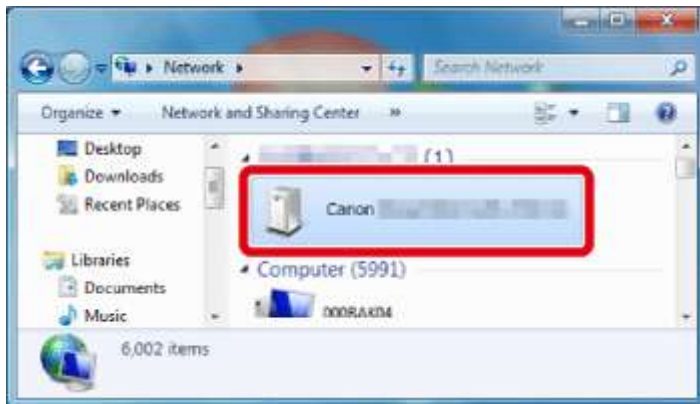
10. The following screen appears.



**IMPORTANT**

- When connecting the camera to a computer for the first time, it is necessary to follow the steps below to install a driver on the computer (Windows only).

Click [Control Panel] &gt; [Network and Internet] &gt; [View network computers and devices], and then double-click the connected model on the [Other Devices] screen to start the installation of the driver.





11. After the driver installation has finished and the camera and computer connection has been completed, the [AutoPlay] screen will appear on the computer.



When this happens, nothing will appear on the camera's LCD screen. The connection is complete at this point.