

# Installing Your Multifunction to Additional Computers on Your Network

PIXMA MG6120

Mac OS

# Installing Your Multifunction to Additional Computers on Your Network

PIXMA MG6120

Mac OS

Preparing to Connect My Multifunction To My Network	3
Installing The MG6120 Software	5

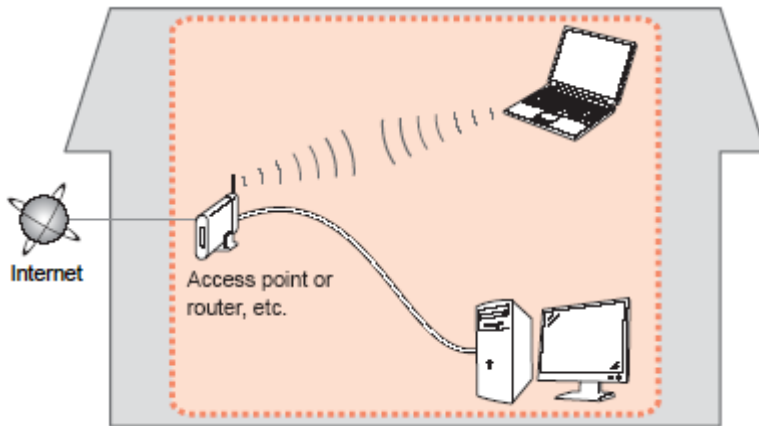
# Preparing to Connect My Multifunction To My Network

[<< Previous](#)

[Next >>](#)

## Network Requirements

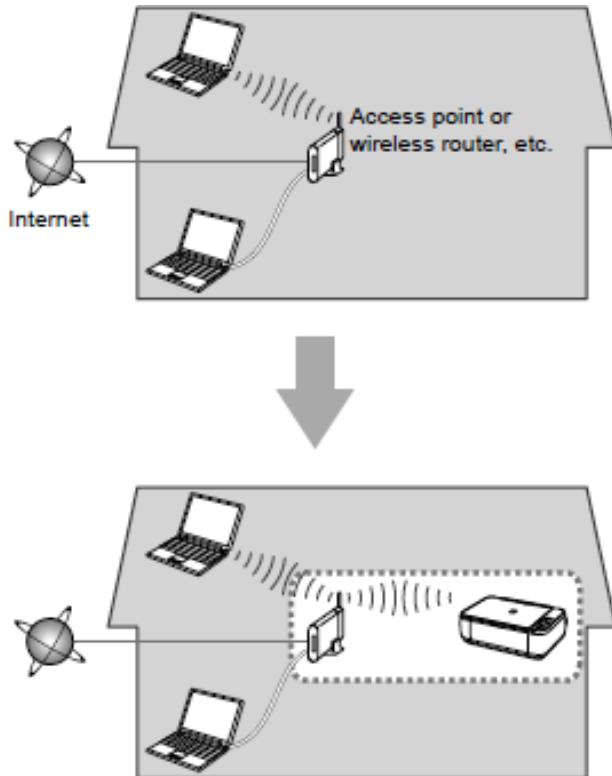
Before connecting the machine to the network, make sure that configuration of the computer and access point or router is complete, and that the computer is connected to the network.



# Preparing to Connect My Multifunction To My Network

[<< Previous](#)

[Next >>](#)



An "Ad-hoc connection," which establishes a direct connection to the computer over a wireless connection without using an access point, is not supported.

Be sure to prepare an access point.

## Notes on Network Connection

- The configuration, router functions, setup procedures and security settings of the network device vary depending on your system environment. For details, refer to your device's instruction manual or contact its manufacturer.
- In an office setup, consult your network administrator
- If you connect to a network that is not protected with security measures, there is a risk of disclosing data such as your personal information to a third party.
- If an error message appears or if you have trouble with the network connection, refer to the printed manual: Network Setup Troubleshooting.
- Place the machine and computer on the same network segment.

If the machine is already connected to a wireless connection, it can be used from additional computers on the same network.

Before we begin:

- Log on as the administrator (or a member of the Administrators group).
- Quit all running applications before installation.
- If the firewall function of your security software is turned on, a warning message may appear that Canon software is attempting to access the network. If such a warning message appears, set the security software to always allow access.

## Step 1

Turn on the computer, then insert the Setup CD-ROM into the CD-ROM drive. If you are using Windows, the setup program starts automatically.



### Note:

If the program does not start automatically, double-click the CD-ROM icon in Computer or My Computer. When the CD-ROM contents appear, double-click MSETUP4.EXE.


## Step 2

Double-click the Setup icon of the CD-ROM folder to proceed to the following screen.



Enter your administrator name and password, then click OK.

If the CD-ROM folder does not open automatically, double-click the CD-ROM icon on the desktop.

If you do not know your administrator name or password, click the help button , then follow the on-screen instructions.

## Step 3

Click **Easy Install**

The drivers, application software, and on-screen manuals are installed.

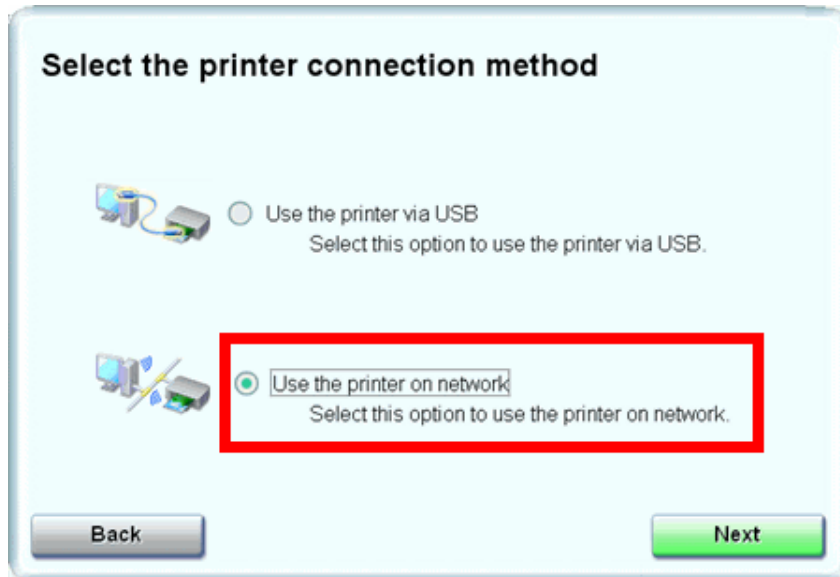
**Note:** If you want to select particular items to install, click **Custom Install**.

## Step 4

Click **Install**

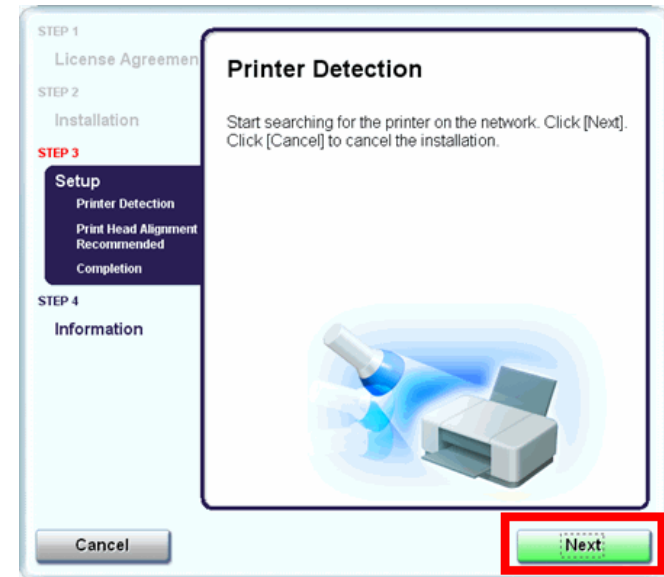
## Step 5

Select **Use the printer on network**, then click **Next**.



## Step 6

When the Printer Detection screen appears, click **Next**.



### ▶ IMPORTANT

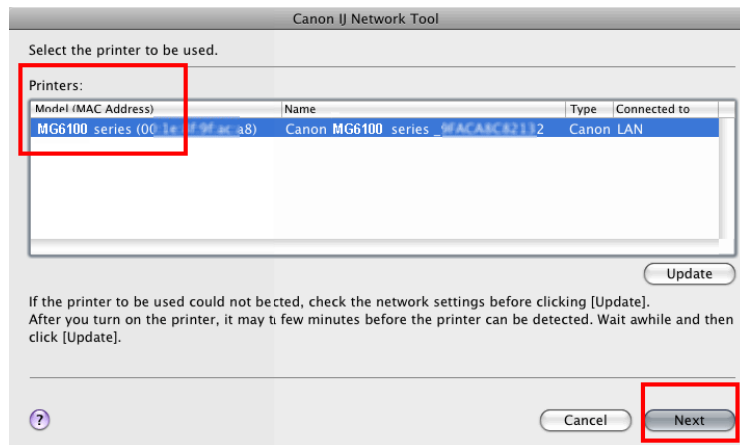
IF THE PRINTER CONNECTION SCREEN APPEARS INSTEAD OF THE SCREEN ABOVE, THE CONNECTION METHOD IS NOT CORRECTLY SELECTED IN 5.

CLICK CANCEL AND START AGAIN FROM STEP 1, THEN BE SURE TO SELECT USE THE PRINTER ON NETWORK IN 5.



## Step 7

On the **Canon IJ Network Tool** screen, select **MG6100 series** in Printers, then click **Next**.



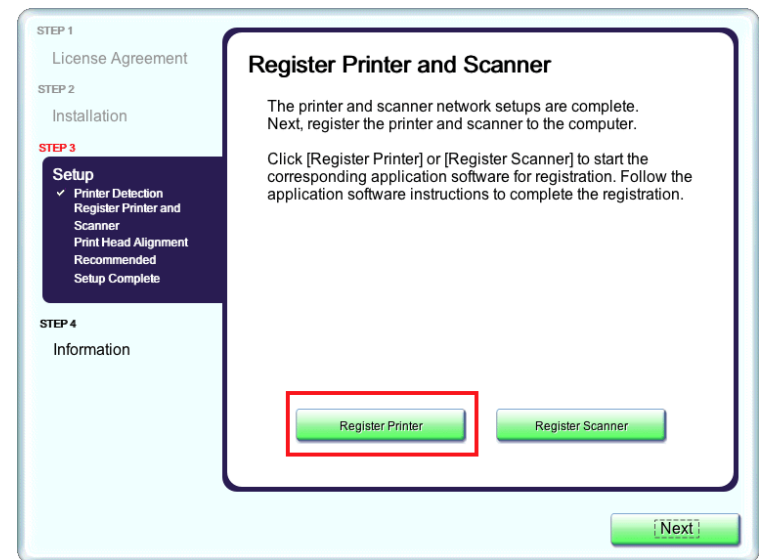
### Note:

The alphanumeric characters after **Canon MG6100 series** is the machine's Bonjour service name or MAC address.

If the machine is not detected, refer to the printed manual: *Network Setup Troubleshooting*. Make sure there is no problem, then click **Update**

## Step 8

When the **Register Printer and Scanner** screen appears, click **Register Printer**.



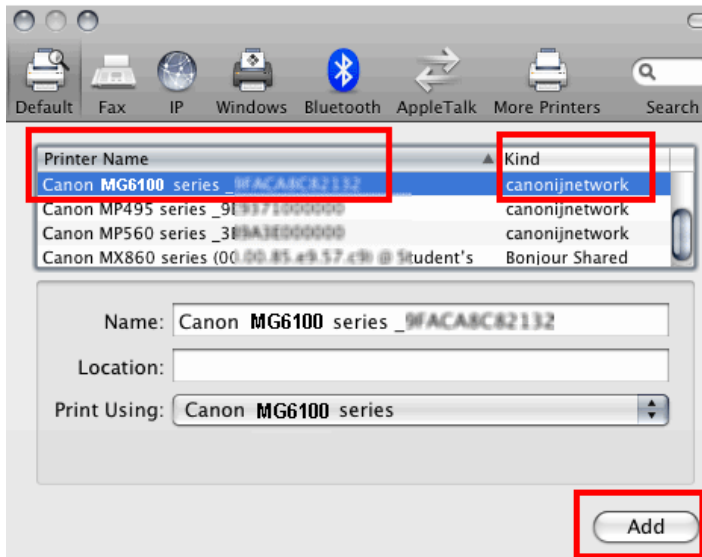
## Step 9

For OS X v. 10.6.x and 10.5.x only

Select Canon MG6100 series canonijnetwork and click Add.

Go to Step 11.

**Note:** It may take a minute or two before the printer appears in the list



## Step 10

For OS X v. 10.4.11 only

1. When the Printer List window appears, click **Add**.



**Note:** When the “You have no printers available”. screen appears, click **Add**.

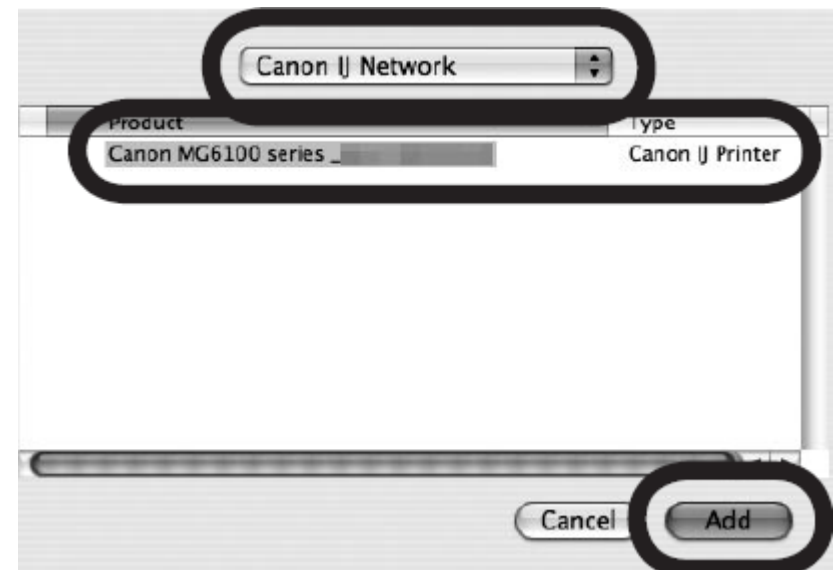
## Step 10 (continued)

2. Click **More Printers** in the Printer Browser window.



## Step 10 (continued)

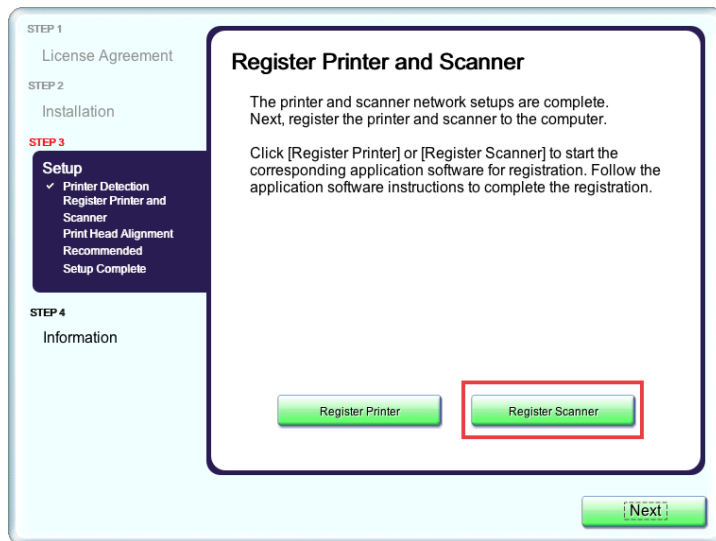
3. Click **More Printers** in the Printer Browser window.



4. Make sure that Canon MG6100 series is added to the list of printers.

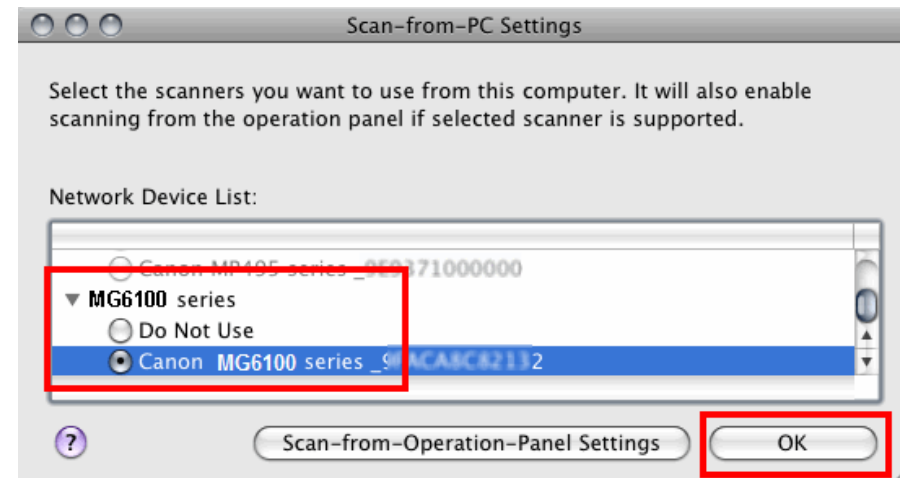
## Step 11

When the Register Printer and Scanner screen appears, click **Register Scanner**.



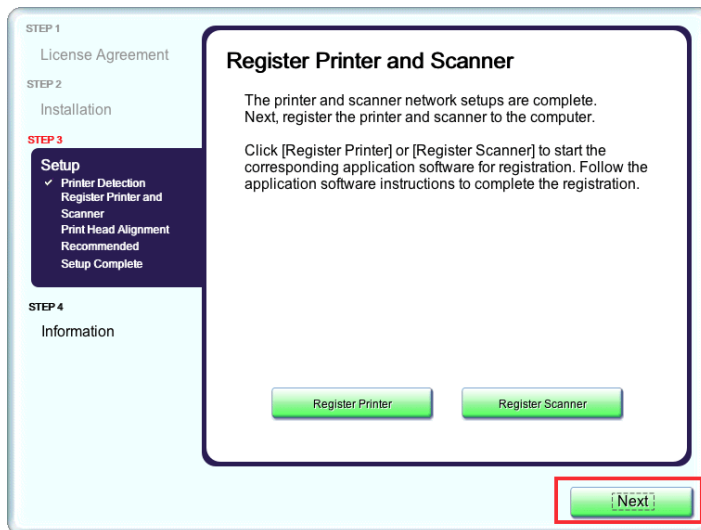
## Step 12

Select **MG6100 series** on the Scan-from-Operation-Panel Settings screen, then click **OK**.



## Step 13

Click **Next** on the Register Printer and Scanner screen.



***Wireless setup is now complete***

## Step 14

Follow any on-screen instructions to proceed with the remaining software installation.