



# **Installing Your Multifunction to Your Network for the First Time**

**-USB Cable Method  
PIXMA MX472**

**Windows OS**

# **Installing Your Multifunction to Your Network for the First Time**

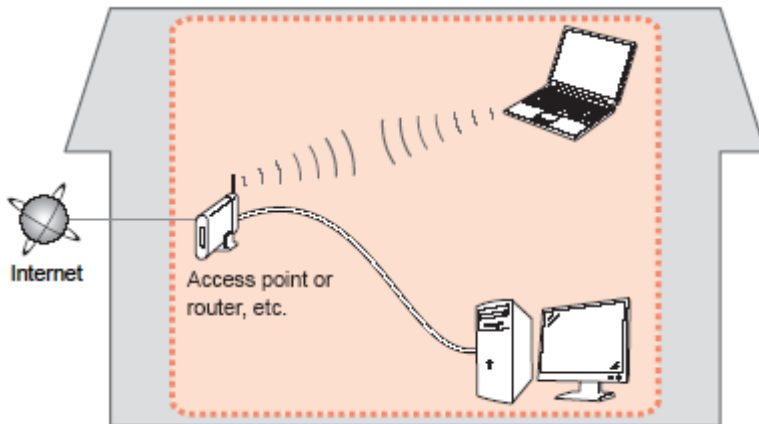
**PIXMA MX472  
Windows OS**

<b>Preparing to Connect My Multifunction to My Network</b>	<b>3</b>
Network Requirements	3
Notes on Wireless Connection	4
<b>Installing the Drivers &amp; Software</b>	<b>5</b>

# Preparing to Connect the Multifunction To the Network

## Network Requirements

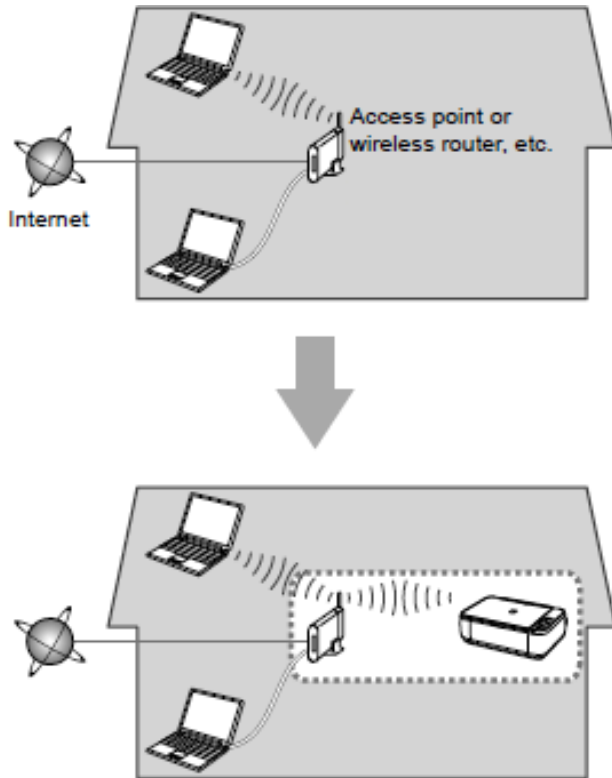
Before connecting the machine to the network, make sure that configuration of the computer and access point or router is complete, and that the computer is connected to the network.



## Wireless Connection

Before connecting the machine to the network, the computer needs to be connected to the network. Make sure that configuration of the computer and access point or router is complete.

# Preparing to Connect the Multifunction To the Network



## Notes on Network Connection

- The configuration, router functions, setup procedures and security settings of the network device vary depending on your system environment. For details, refer to your device's instruction manual or contact its manufacturer.
- In an office setup, consult your network administrator
- If you connect to a network that is not protected with security measures, there is a risk of disclosing data such as your personal information to a third party.
- Place the machine and computer on the same network segment.

# Installing the Drivers & Software

## Software Installation

To use the machine by connecting it to a computer, software including the drivers needs to be copied (installed) to the computer's hard disk. Installation time varies depending on the computer environment or the number of application software to be installed.

### **IMPORTANT**

- Log on as the administrator (or a member of the Administrators group).
- Quit all running applications before installation.
- Do not switch users during the installation process.
- Internet connection may be required during the installation. Connection fees may apply. Consult the internet service provider.
- It may be necessary to restart your computer during the installation process. Follow the on-screen instructions and do not remove the Setup CD-ROM during restarting. The installation resumes once your computer has restarted.
- If the firewall function of your security software is turned on, a warning message may appear that Canon software is attempting to access the network. If such a warning message appears, set the security software to always allow access.

# Installing the Drivers & Software

To set up the PIXMA MX472 to your wireless network, you must first install the software to your computer.

To begin the setup procedure, insert the Setup CD-ROM into your computer.\*



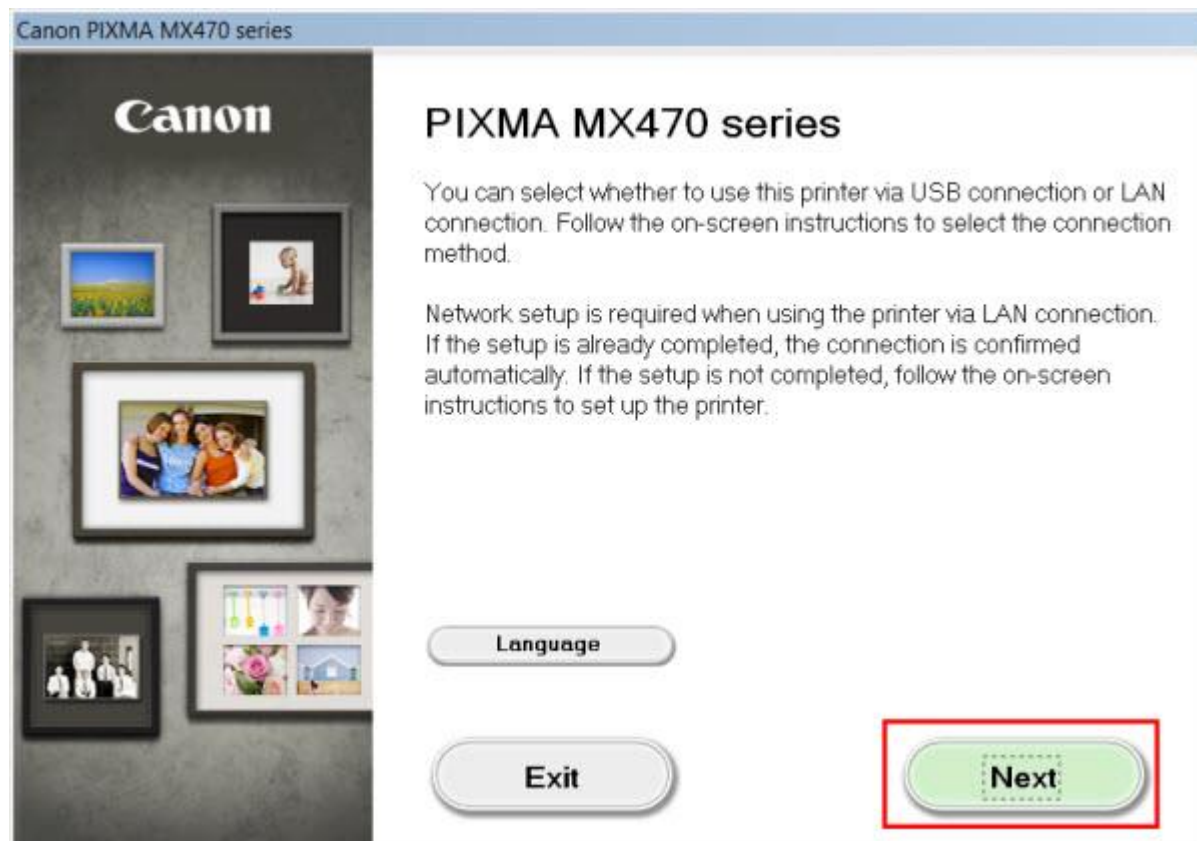
\*If you don't have or cannot use the Setup CD-ROM, follow the steps below to start the setup.

- [Download the software](#) (click the link to download)
- Double-click the downloaded .exe file (Win-MX470-1\_0-ucd.exe)

If the **User Account Control** dialog box appears during the setup, click **Yes** or **Continue**.

# Installing the Drivers & Software

Click **Next** on the initial screen

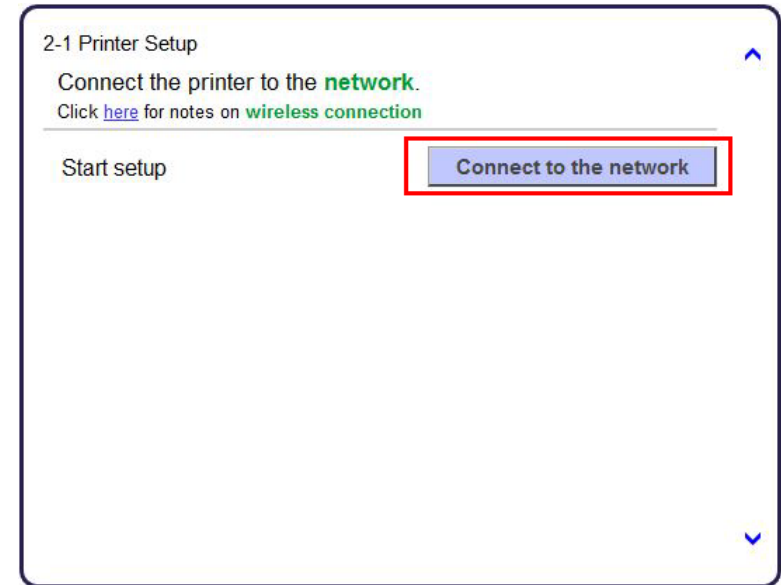
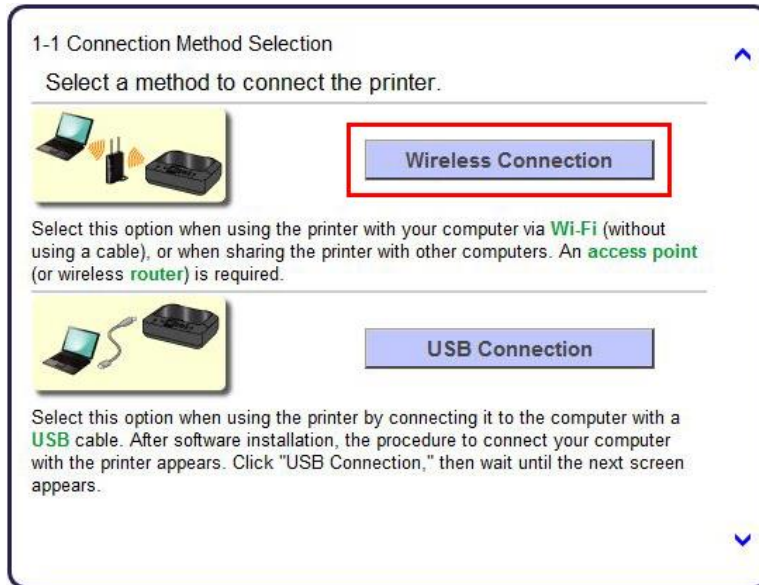


# Installing the Drivers & Software

## - Connecting to the wireless network

On the **Connection Method Selection** screen (1-1) select **Wireless Connection**.

Continue to follow on-screen instructions. Select **Connect to the network** when the **Printer Setup** (2-1) screen appears.



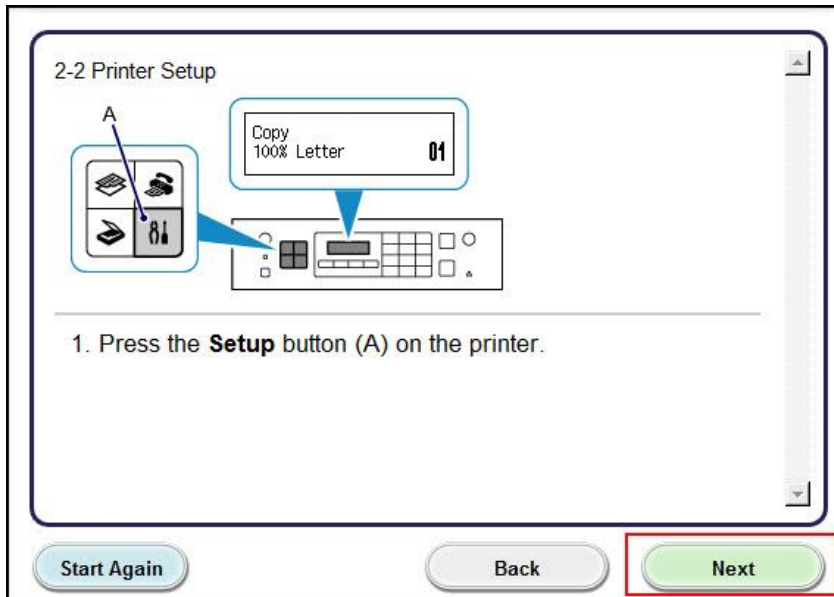


# Installing the Drivers & Software

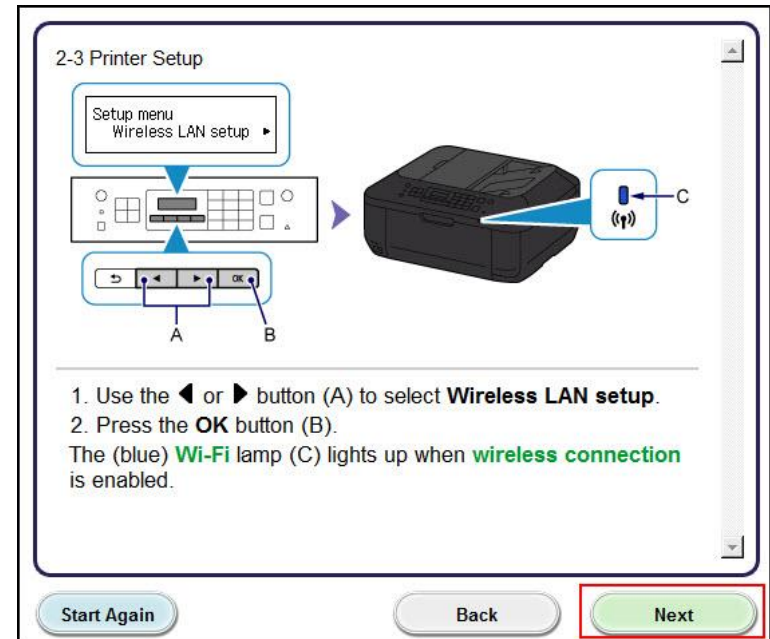
## - Connecting to the wireless network

Continue to follow on-screen instructions.

Press the **Setup** button on the printer then click **Next** on the **Printer Setup (2-2)** screen.



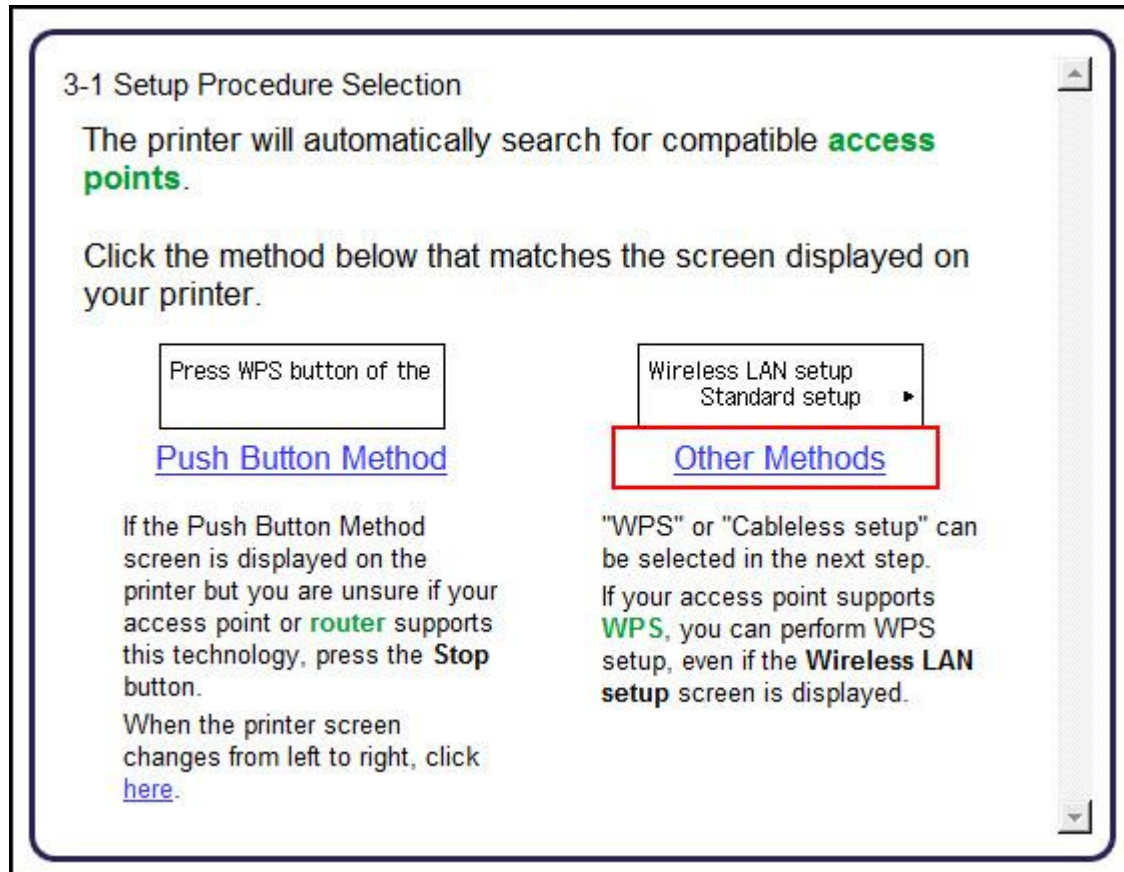
Carefully follow the instruction to select **Wireless LAN setup** on the printer. Press the **OK** button on the printer. Then, click **Next** on the **Printer Setup (2-3)** screen.



# Installing the Drivers & Software

## - Connecting to the wireless network

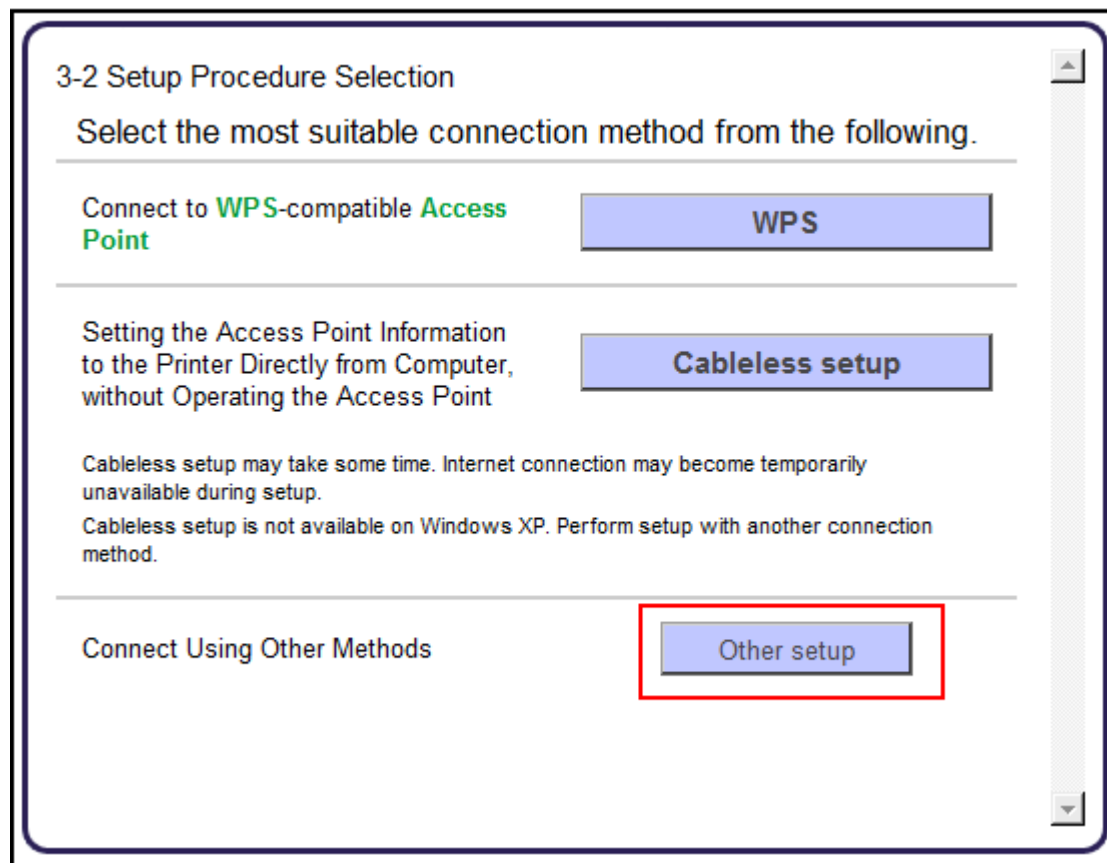
Continue to follow the on-screen instructions until the **Setup Procedure Selection** screen (3-1) appears. If your printer's LCD screen is the same as that shown above **Push Button Method** on the **Setup Procedure Selection** screen (3-1), press the printer's **Stop** button. Once your printer's screen is the same as that shown above **Other Methods**, click **Other Methods** on the **Setup Procedure Selection** screen (3-1).



# Installing the Drivers & Software

## - Connecting to the wireless network

Select **Other setup** on **Setup Procedure Selection** screen (3-2).



3-2 Setup Procedure Selection

Select the most suitable connection method from the following.

---

Connect to **WPS-compatible Access Point**

**WPS**

---

Setting the Access Point Information to the Printer Directly from Computer, without Operating the Access Point

**Cableless setup**

Cableless setup may take some time. Internet connection may become temporarily unavailable during setup.  
Cableless setup is not available on Windows XP. Perform setup with another connection method.

---

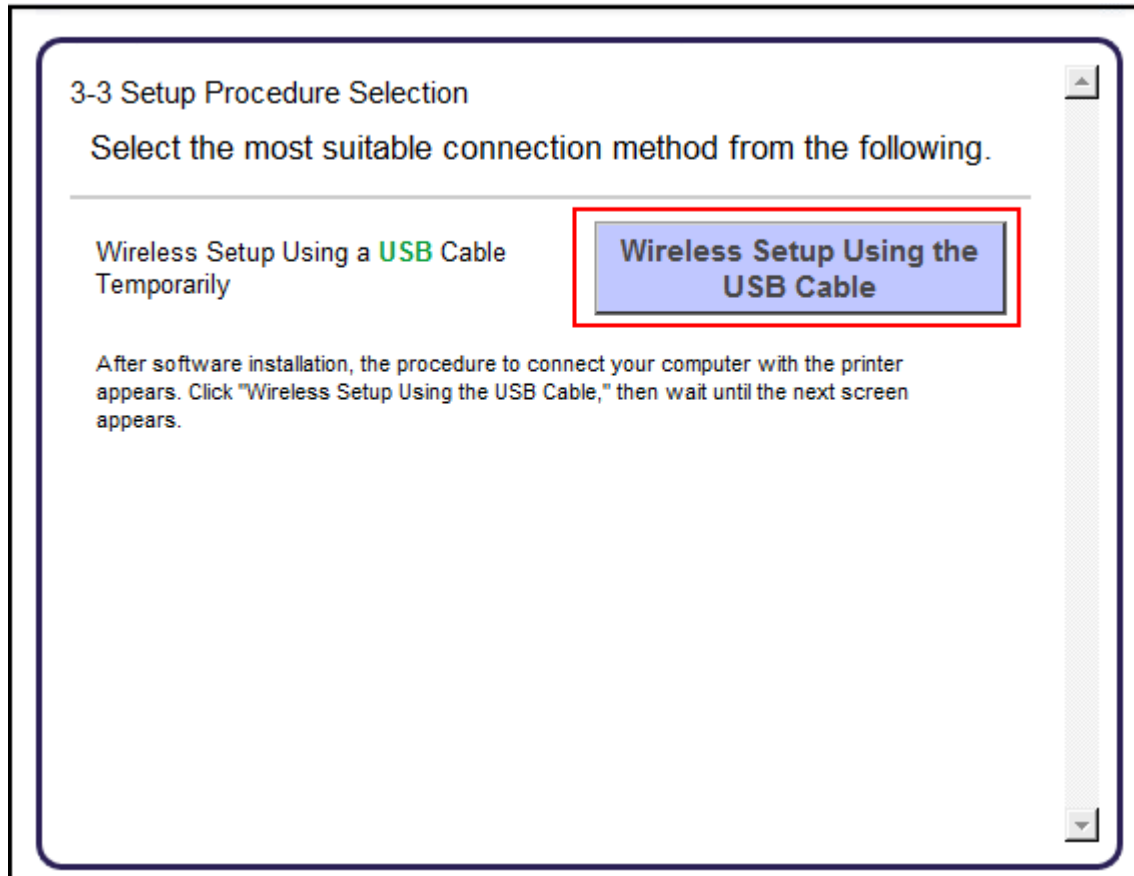
Connect Using Other Methods

**Other setup**

# Installing the Drivers & Software

## - Connecting to the wireless network

Select **Wireless setup Using the USB Cable** on the **Setup Procedure Selection (3-3)** screen . Please note that instructions to connect the computer and printer will appear later in the setup , once the software installation has completed.



# Installing the Drivers & Software

Continue following on-screen instructions. On the **Software Installation List**, select \*software to install and click **Next**.

\***MP Drivers** is required and cannot be deselected. We recommend installing **My Image Garden** and **Quick Menu** to take full advantage of the printer's features.

**Software Installation List**

The selected software will be installed. Make sure that the software you want to install is selected, and then click [Next].

<input checked="" type="checkbox"/> MP Drivers	260 MB
<input checked="" type="checkbox"/> User's Manual	10 MB
<input checked="" type="checkbox"/> My Printer	14 MB
<input checked="" type="checkbox"/> Speed Dial Utility	10 MB
<input checked="" type="checkbox"/> My Image Garden	680 MB
<input checked="" type="checkbox"/> Quick Menu	40 MB
<input checked="" type="checkbox"/> Easy-WebPrint EX	60 MB
<input checked="" type="checkbox"/> XPS Driver	130 MB

Drive C: 180059 MB free space  
Total used space: 2249 MB

Select All

Clear All

Back

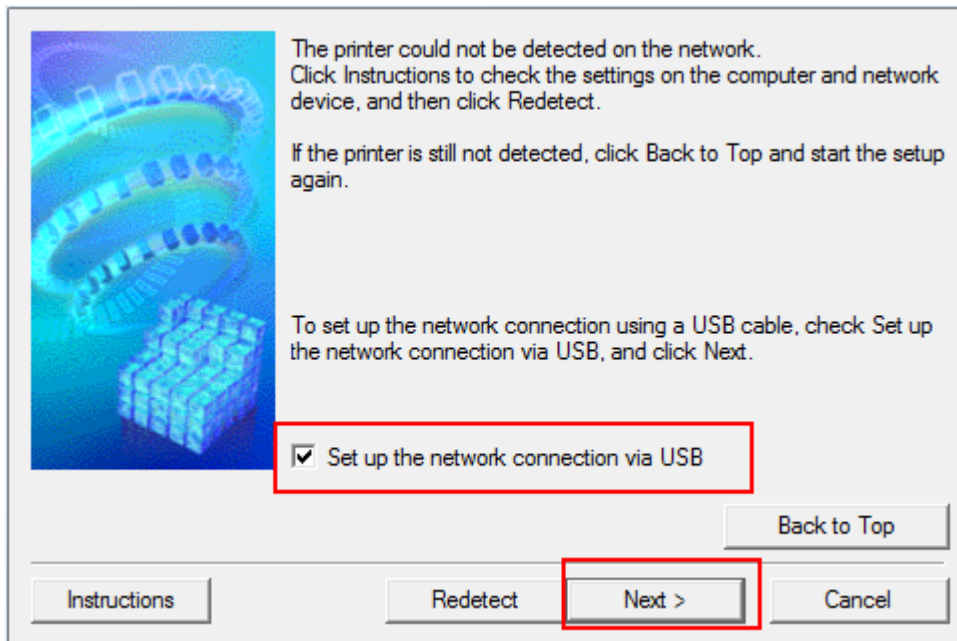
Estimated installation time: 10 to 15 minutes  
Installation may take some time depending on your network environment.

Next

# Installing the Drivers & Software

Continue following on-screen instructions.

When the **Check Printer Settings** dialog box appears, check the **Set up the network connection via USB** checkbox. Then click **Next**.

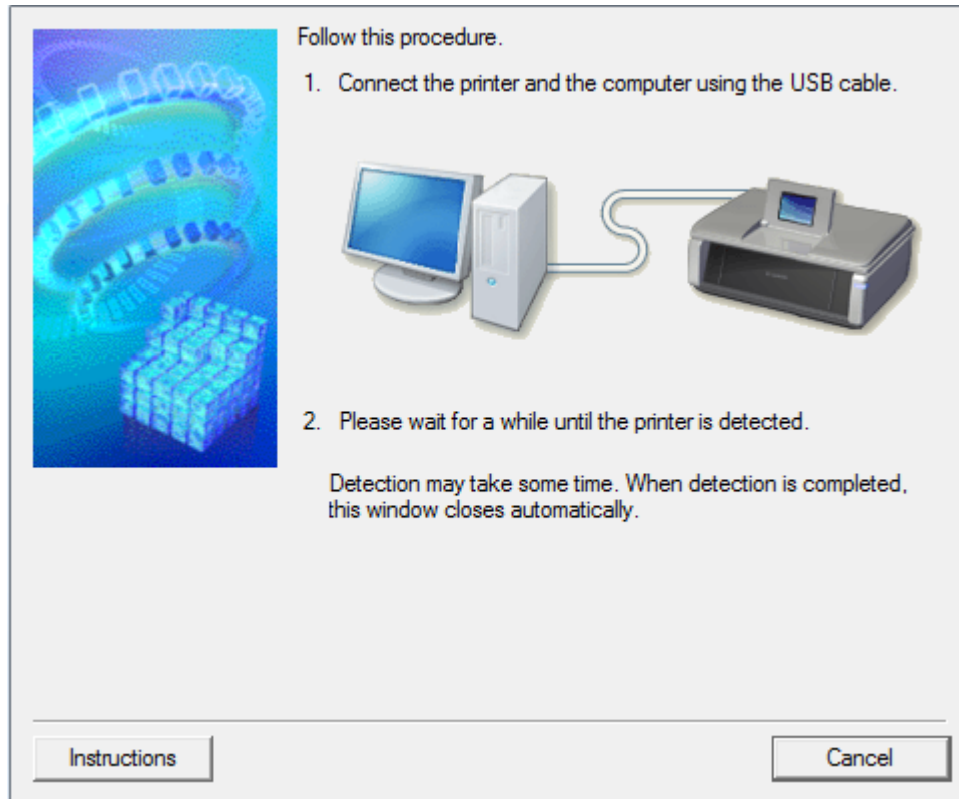


At this point, setup of the printer and network is complete. Continue to follow any remaining on-screen instructions to finish and exit the setup program.

# Installing the Drivers & Software

## - Connecting to the wireless network

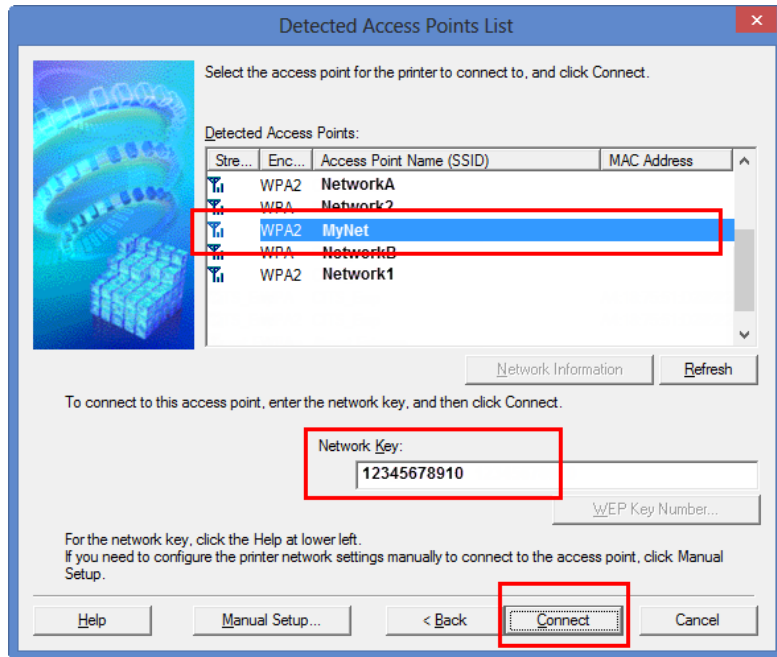
Connect the printer and computer using a USB cable. The screen shown below will close automatically once the printer has been detected.



# Installing the Drivers & Software

## - Connecting to the wireless network

If the **\*Detected Access Points List** appears, select the Access Point to connect to, enter the Network Key and click **Connect**



\*Generally, this list is only seen if there are multiple access Points (routers) in the area and the computer is not currently connected.

If the **Confirm Connection Access Point** dialog appears, verify the correct Access Point (router or Network name) is listed and click **Yes**.

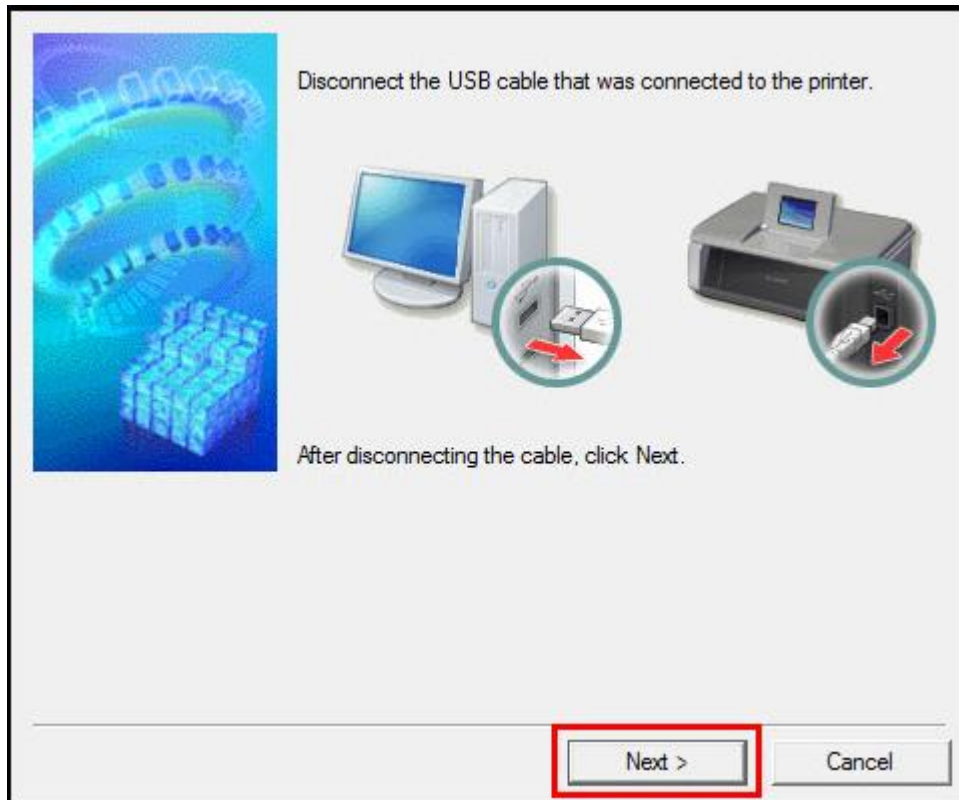




# Installing the Drivers & Software

## -Completing Setup

Disconnect the USB cable and click **Next**.

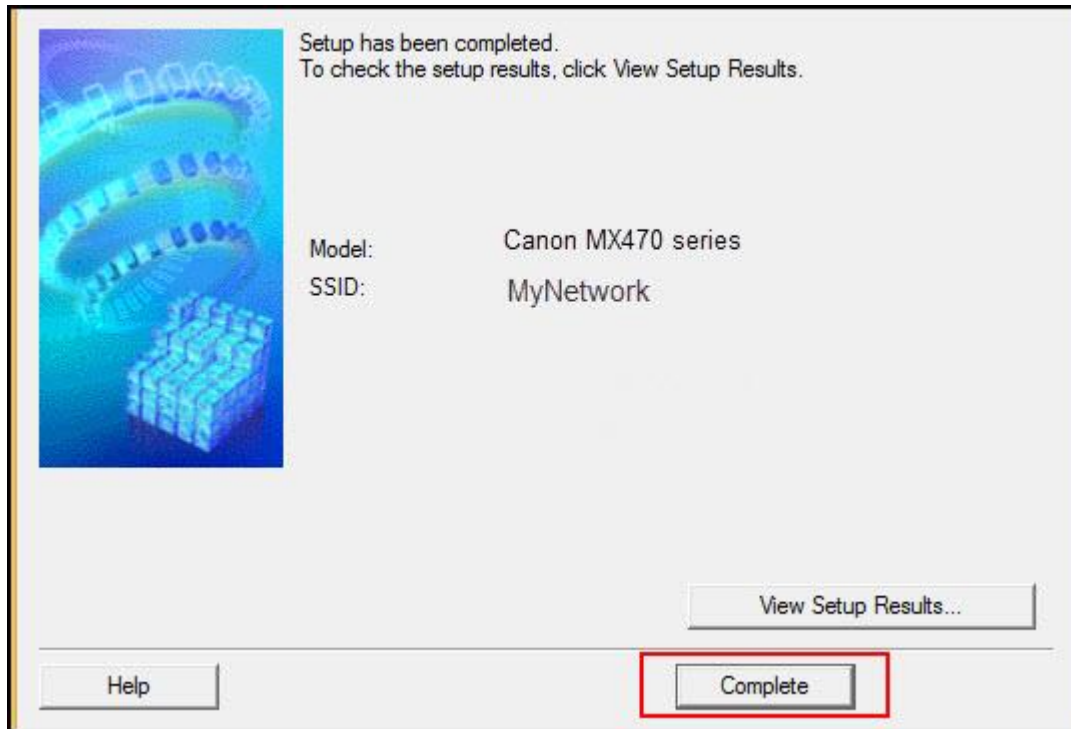


# Installing the Drivers & Software

## -Completing Setup

Continue following on-screen instructions.

When the **Setup Completion** dialog box appears, click **Complete**.



At this point, setup of the printer and network is complete. Continue to follow any remaining on-screen instructions to finish and exit the setup program.