



Installing Your Printer to Your Network for the First Time

PIXMA PRO-100

Mac and Windows OS

Installing Your Printer to Your Network for the First Time

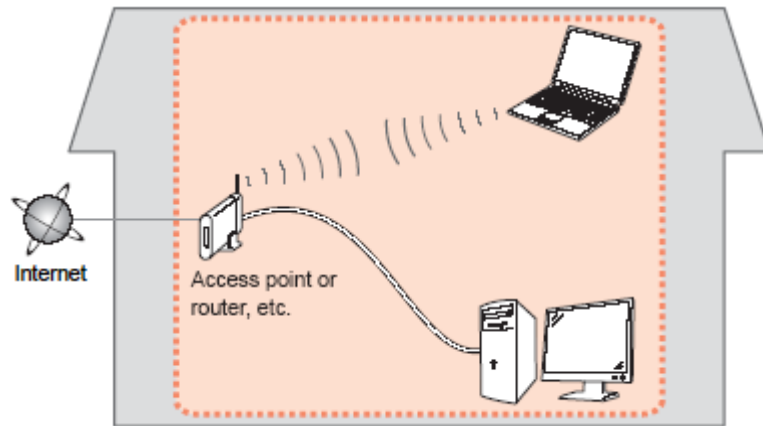
PIXMA PRO-100
Macintosh and Windows OS

Preparing to Connect My Printer to My Network	3	
Network Requirements		3
Notes on Wireless Connection		4
Installing the Drivers & Software		5

Preparing to Connect My Printer To My Network

Network Requirements

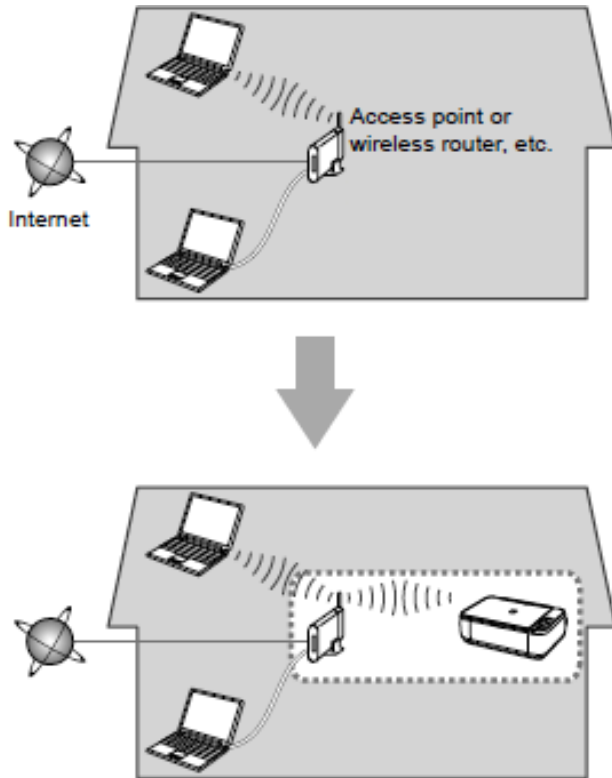
Before connecting the machine to the network, make sure that configuration of the computer and access point or router is complete, and that the computer is connected to the network.



Wireless Connection

Before connecting the machine to the network, the computer needs to be connected to the network. Make sure that configuration of the computer and access point or router is complete.

Preparing to Connect My Printer To My Network



An "Ad-hoc connection," which establishes a direct connection to the computer over a wireless connection without using an access point, is not supported.

Notes on Network Connection

- The configuration, router functions, setup procedures and security settings of the network device vary depending on your system environment. For details, refer to your device's instruction manual or contact its manufacturer.
- In an office setup, consult your network administrator
- If you connect to a network that is not protected with security measures, there is a risk of disclosing data such as your personal information to a third party.
- If an error message appears or if you have trouble with the network connection, refer to the printed manual: Network Setup Troubleshooting.
- Place the machine and computer on the same network segment.

Installing the Drivers & Software

Software Installation

To use the machine by connecting it to a computer, software including the drivers needs to be copied (installed) to the computer's hard disk. The installation process takes about 20 minutes. (The installation time varies depending on the computer environment or the number of application software to be installed.)

IMPORTANT

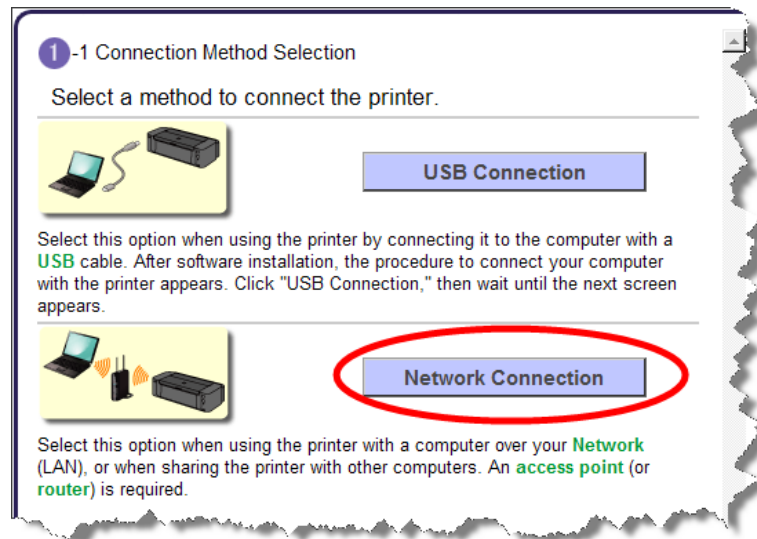
- Log on as the administrator (or a member of the Administrators group).
- Quit all running applications before installation.
- Do not switch users during the installation process.
- Internet connection may be required during the installation. Connection fees may apply. Consult the internet service provider.
- It may be necessary to restart your computer during the installation process. Follow the on-screen instructions and do not remove the Setup CD-ROM during restarting. The installation resumes once your computer has restarted.
- If the firewall function of your security software is turned on, a warning message may appear that Canon software is attempting to access the network. If such a warning message appears, set the security software to always allow access.

Installing the Drivers & Software

Installing the PIXMA PRO-100 on Your Wireless Network

If you are installing your printer on your network for the first time, a step-by-step walk through of the wireless setup is built in to the installation routine of the software that shipped with your PIXMA Printer.

Simply insert the Setup CD-ROM that came with your printer into your CD-ROM drive and proceed through the easy to follow instructions. You'll be printing wirelessly in no time. Be sure to select **Network Connection** on the Connection Method Selection screen.



Installing the Drivers & Software

Installing the PIXMA PRO-100 on Your Wireless Network

If you can't find your CD-ROM, you may download and install the PRO-100 series Printer Driver by following the instructions below:

1. [Click here to access the PRO-100 Drivers & Software page.](#)
2. If necessary, select the operating system and version of your computer (see example below).
3. Click the "SELECT" button next to "PRO-100 series Printer Driver Ver. 1.05".
4. Click the "DOWNLOAD" button.
5. Once the download is complete, double-click the file from its download location to begin the installation.

Drivers & Downloads

Operating System: Windows 7 (x64) (Det) Language: English

Recommended Downloads Drivers Software Firmware Utilities

File Name	Date	File Size
PRO-100 series Printer Driver Ver. 1.05 (Windows 10/10 x64/8.1/8.1 x64/8/8 x64/7/7 x64/Vista/Vista64/XP)	07/22/15	15.37 MB

SELECT