

Canon

PIXMA MG7720

WIRELESS INKJET ALL-IN-ONE PRINTER



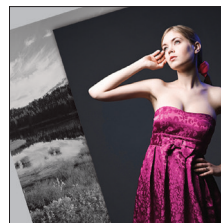
**THE SUPERIOR QUALITY YOU'VE COME
TO EXPECT, THE EASE OF USE YOU'LL LOVE**

KEY FEATURES



NFC Printing¹

Print a photo or document by launching the Canon PRINT app² and touching your NFC-compatible Android device to the MG7720.



6 Ink Tank System

Always great photos with a dedicated gray ink, and an expanded color gamut thanks to enriched magenta and photo black inks.

MOBILE PRINTING

Wireless printing options at your fingertips.



PIXMA MG7720 WIRELESS INKJET ALL-IN-ONE PRINTER

TECHNICAL INFORMATION

PRINT

Print Features	AirPrint ² Auto Duplex Printing, Auto Photo Fix II, Borderless Printing ⁴ CD/DVD/Blu-ray Disc Printing, Document Printing, Easy PhotoPrint+ ⁵ Full HD Movie Print ⁶ Grayscale Printing, Image Cropping, Mopria ⁸ My Image Garden ⁹ Photo Direct Printing (Memory Card) ¹⁰ Photo Printing, Canon PRINT app ² PIXMA Cloud Link ¹¹ PIXMA Touch & Print (NFC) ¹ Quiet Mode, Red-Eye Correction, Special Filters, Web Template Print, Wireless PictBridge ¹² Wireless Printing ¹³
Print Speed ^{14,15}	4" x 6" Borderless Photo: Approx. 21 seconds ESAT (Black): Approx. 15.0 ipm ESAT (Color): Approx. 10.0 ipm
Number of Nozzles	Color: 5,632 / Pigment Black: 1,024 / Total: 6,656
Picoliter Size (Color)	1, 2 and 5
Print Resolution ¹⁶	Color: Up to 9600 x 2400 dpi Pigment Black: Up to 600 x 600 dpi
Paper Sizes	4" x 6", 5" x 7", 8" x 10", Letter, Legal, U.S. #10 Envelope
Paper Tray Capacity	Lower Cassette: 125 Sheets Plain Paper Upper Cassette: 20 Sheets Photo Paper (4" x 6") or 10 Sheets Photo Paper (5" x 7")

COPY

Copy Features	4-on-1 / 2-on-1 Copy, Auto Exposure Copy, Auto Photo Fix II, Borderless Copy, Disc Label Copy, Fade Restoration, Fit-to-Page, Frame Erase Copy, Preset Copy Ratios, Two-sided Copy
Copy Speed ¹⁵	FCOT (Color): Approx. 19 seconds
Reduction/Enlargement	25% – 400%

SCAN

Scan Features	Auto Scan Mode ¹⁷ Push Scan, Network Scan, Wireless Scanning
Scanner Type	Flatbed
Scanning Method	Contact Image Sensor (CIS)
Scanning Resolution ¹⁸	2400 x 4800 dpi (Optical), 19,200 x 19,200 dpi (Interpolated)
Maximum Color Depth	48-bit Internal / 24-bit External
Maximum Document Size	8.5" x 11.7"

GENERAL

General Features	Intelligent Touch System with 3.5" Touch LCD, 6-Color Ink System with Gray Ink, CREATIVE PARK PREMIUM ¹⁹ Rated EPEAT Silver, Auto Power On/Off, Quiet Mode, Self-Opening Output Tray, Canon PRINT app ² PIXMA Cloud Link ¹¹ QuickStart
Standard Interface	Hi-Speed USB, Ethernet, PictBridge (Wireless LAN) ¹² Wireless LAN (IEEE 802.11b/g/n) ¹³ Memory Card Slots ¹⁰ NFC (PIXMA Touch & Print) ¹
Size/Weight	17.2"(L) x 14.6"(W) x 5.9"(H) / 17.4 lbs.
Software (Windows ²⁰ /Mac ²¹)	PIXMA MG7720 Printer Driver, Scan Utility, Master Setup, My Printer (Windows Only), Network Tool, My Image Garden ⁹ (Full HD Movie Print ⁶ CREATIVE PARK PREMIUM ¹⁹ Special Filters, Image Correction/Enhance, and scanning are accessed through My Image Garden), Quick Menu
OS Compatibility	Computer Operating Systems: Windows: ²⁰ Windows [®] 8, Windows 8.1, Windows 7, Windows 7 SP1, Windows Vista [®] SP1, Vista SP2, Windows XP SP3 32-bit Mac: ²¹ Mac OS [®] X v10.7.5-10.10 Mobile Operating Systems: iOS, ² Android, [™] Windows RT ²² and Amazon Fire devices ²³
Warranty ²⁴	1-Year limited warranty with InstantExchange Program. 1-Year toll-free U.S.-based technical phone support

FOR MORE INFORMATION VISIT WWW.USA.CANON.COM/CONSUMER

For the name of the nearest dealer, call: 1-800-OK-CANON

PRODUCT INFO / INKS

Model No.	PIXMA MG7720 Black Wireless Inkjet All-In-One Printer	0596C002AA
	PIXMA MG7720 White Wireless Inkjet All-In-One Printer	0596C022AA
	PIXMA MG7720 Red Wireless Inkjet All-In-One Printer	0596C042AA
	PIXMA MG7720 Gold Wireless Inkjet All-In-One Printer	0596C062AA
Compatible Inks	PGI-270 PGBK XL CLI-271 BK XL CLI-271 C XL CLI-271 M XL CLI-271 Y XL CLI-271 GY XL PGI-270 PGBK CLI-271 BK CLI-271 C CLI-271 M CLI-271 Y CLI-271 GY	XL Pigment Black Ink Tank XL Black Ink Tank XL Cyan Ink Tank XL Magenta Ink Tank XL Yellow Ink Tank XL Gray Ink Tank Pigment Black Ink Tank Black Ink Tank Cyan Ink Tank Magenta Ink Tank Yellow Ink Tank Gray Ink Tank 0319C001AA 0336C001AA 0337C001AA 0338C001AA 0339C001AA 0340C001AA 0373C001AA 0390C001AA 0391C001AA 0392C001AA 0393C001AA 0394C001AA

SPECIFICATIONS ARE SUBJECT TO CHANGE WITHOUT NOTICE.
ALL VIEWSCREEN AND PRINTER OUTPUT IMAGES ARE SIMULATED.

- Requires an Android mobile device with NFC hardware running Android 2.3.3 or later, and the Canon PRINT Inkjet/SELPHY app, available for free at Google Play. Canon PRINT Inkjet/SELPHY app must be open to use PIXMA Touch & Print.
- Requires an Internet connection and the Canon PRINT Inkjet/SELPHY app, available for free on the App Store and at Google Play. Compatible with iPad, iPhone 3GS or later, and iPod touch 3rd generation or later devices running iOS 7.0 or later, and Android mobile devices running Android 2.3.3 or later. Your device must be connected to the same working network with wireless 802.11 b/g/n capability as your printer. For users of compatible Apple mobile devices, document printing requires Apple AirPrint, which requires an AirPrint-enabled printer connected to the same network as your iOS device. A printer connected to the USB port of your Mac, PC, AirPort Base station, or Time Capsule is not supported.
- AirPrint functionality requires an iPad, iPhone 3GS or later, or iPod touch 3rd generation or later device running iOS 4.2 or later, and an AirPrint-enabled printer connected to the same network as your iOS device. A printer connected to the USB port of your Mac, PC, AirPort Base station, or Time Capsule is not supported.
- Envelopes and High Resolution Paper are NOT supported for borderless printing.
- Works edited by using this application cannot be displayed, edited, or printed without this application. Compatible with Android device of 7 inches or more using Chrome (latest version compatible with your current version of Android OS), iOS Devices of 7 inches or more using Safari 5.1 or later, Windows PC (excluding RT) using Internet Explorer 10 or later of Microsoft Modern UI version, Microsoft Internet Explorer 9 or later, Mozilla Firefox 31 or later, or Google Chrome version 36 or later, and with Mac OS X 10.6.8 or later using Safari 5.1 or later.
- "Full HD Movie Print" is available from "MOV" and "MP4" movie files created by select Canon EOS Digital SLRs, PowerShot, and VIXIA digital cameras and camcorders. Requires PC or Mac with Intel[®] processor and Canon ZoomBrowser EX 6.5 or later or Canon ImageBrowser 6.5 or later for "MOV" files, or Canon ImageBrowser EX 1.0 or later for "MP4" files. Print quality is determined by the video resolution. Function does not upscale video resolution.
- Requires Android[™] mobile device with Android 5.0 operating system or later with the Mopria Print Service pre-loaded with that device and the compatible PIXMA printer on the same wireless network. Printing with Mopria is also available on mobile devices with Android 5.0 operating system or later with a download of the Mopria Print Service from Google Play.
- To install using Windows[®] OS, .NET Framework 4 is required. Compatible still image formats are PDF (created using Canon PDF Creator only), JPEG (Exif), TIFF, and PNG. Compatible video formats are MOV (from select Canon digital cameras only) and MP4 (from select Canon digital camcorders only).
- Compatible memory cards include SD[™] Card, SDHC[™] Card, Memory Stick DUO[™] and Memory Stick PRO Duo[™]. The following can be used with the addition of a special adapter sold separately: miniSD[™] Card, miniSDHC[™] Card, microSD[™] Card, microSDHC[™] Card and Memory Stick Micro.
- Requires an Internet connection.
- DPS over IP compatible device required.
- Wireless printing requires a working network with wireless 802.11b/g or n capability. Wireless performance may vary based on terrain and distance between the printer and wireless network clients.
- Photo print speeds are based on the standard mode driver setting using photo test pattern(s) and select Canon Photo Paper. Print speed is measured as soon as first page begins to feed into printer and will vary depending on system configuration, interface, software, document complexity, print mode, types of paper used, and page coverage. See www.usa.canon.com/printspeed for additional information.
- ISO/IEC 24734, 24735 define the default print and copy speed measurement methods. Print speeds are the averages of ESAT in Office Category Test for the default simplex mode, ISO/IEC 24734, excluding time to print the first set. Copy speed is the average of FCOT, ISO/IEC 24735 Annex D. ADF copy speed is the average of ESAT in General Performance Test for the default simplex mode, ISO/IEC 24735, excluding time to copy the first set. See www.usa.canon.com/ipm for additional details.
- Resolution may vary based on printer driver setting. Color ink droplets can be placed with a horizontal pitch of 1/9600 inch at minimum.
- For network users, Auto Scan Mode is only available when scanning at a computer using My Image Garden software and selecting the I-click feature then "Save to PC".
- Optical resolution is a measure of maximum hardware sampling resolution, based on ISO 14473 standard.
- CREATIVE PARK PREMIUM is a premium content service available exclusively to users only when all of the colors of genuine Canon inks and all of the software that came with the printer are properly installed.
- Operation can only be guaranteed on a PC with pre-installed Windows 8.1, Windows 8, Windows 7, Vista or XP.
- Internet Connection required during software installation.
- Requires a Windows RT compatible device and the Canon Easy-PhotoPrint app for Windows RT available for free in the Windows Store.
- Requires "Canon Print Plugin" available for free from the Amazon Appstore and an Amazon Fire Phone, Amazon Kindle Fire HD6 or HDX device or later running Fire OS 4.0 or later.
- Warranty programs are subject to certain conditions and restrictions. See www.usa.canon.com/support for details.

Discover Canon's
Social Side:

