

imageCLASS MF448dw

Black and White | Compact | Multifunction

Print up to 40 ppm

Print up to 8-1/2" x 14"

900-sheet maximum paper capacity

Three-year limited warranty standard

Designed for small and medium-size businesses, the Canon imageCLASS MF448dw model balances speedy performance, minimal maintenance, and the ability to add an extra paper tray. A 5" color touchscreen delivers an intuitive user experience and can be customized by a device administrator to help simplify many daily tasks.



USABILITY

- 5" intuitive, color touchscreen with smartphone-like usability.
- A unique, customized device experience with Application Library.
- Create Wi-Fi® Direct hotspot from the printer to establish direct connection to compatible mobile device(s) without the need for an external router.



QUALITY AND RELIABILITY

- Canon's signature reliability and engine technologies help keep productivity high and minimize the impact on support resources.
- Intuitive maintenance videos for common tasks like consumables replacement.
- Designed to achieve maximum uptime with status notifications to help keep supplies replenished.



SECURITY

- Low risk of confidential information loss, as documents are only stored in short-term memory.
- Security settings can be set behind an administrator log-in.
- Verify System at Startup is a process to help verify the validity of the device firmware and Application Library from unauthorized modifications.
- Keep documents secure with optional security features.



COST EFFICIENCY

- High-capacity, all-in-one cartridge helps reduce overall supply costs.
- Out-of-the-box, standard two-sided printing plus the ability to print multiple pages onto one page helps to reduce paper consumption.



WORKFLOW EFFICIENCY

- Supports mobile solutions for printing and scanning.¹
- Scan and convert documents to searchable digital files through a single-pass duplex document feeder.
- Designed for small print jobs with first-print time as fast as 5.3 seconds.



SUSTAINABILITY

- A combination of fusing technologies and low-melting-point toner minimizes power requirements and helps to use less energy.
- Encourage environmentally conscious work practices by providing multiple settings that can help save paper and energy.
- ENERGY STAR® certified and currently rated EPEAT® Silver.²

KEY FEATURES



EASY TO USE WITH APPLICATION LIBRARY

Unique to the Canon product line, the Application Library platform allows for one-touch button creation of key functions: Print Template, Standby Slide (screen saver), Scan-to-Preset Destination, ID Card Copy, Consumables Information, Copy (Eco), Copy (Bleed Reduce), Passport Copy, Fax and Store, Name and Scan, Copy (Enhance Text), and Language.



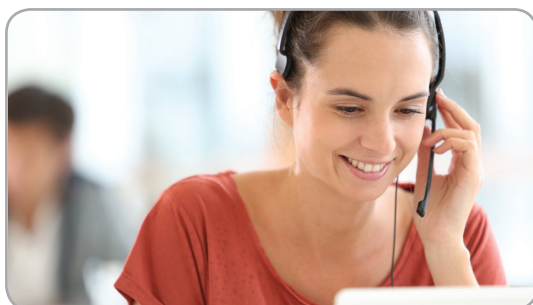
MOBILE-FRIENDLY DEVICE ACCESS

From application-based to cloud-based⁵ to device native, the imageCLASS MF448dw model offers a variety of methods for printing from a mobile phone or tablet across iOS and Android devices. The Canon PRINT Business application, which supports both platforms, offers access to additional device settings as well as the ability to scan from the printer to a mobile phone or tablet.



FAST, SINGLE-PASS DUPLEX SCANNING

The imageCLASS MF448dw leverages a single-pass document feeder for two-sided scanning at up to 70 images per minute (ipm) in black and white or up to 26 ipm in color. Scanned files can be converted into multiple file formats, including Hi-Compression PDF and Searchable PDF (OCR).



100% U.S.-BASED SERVICE AND SUPPORT

From cutting-edge technology to industry-leading response times, Canon U.S.A. takes pride in delivering complete customer satisfaction. Canon's award-winning, 100% U.S.-based, friendly, and knowledgeable Customer Service team provides expert assistance for every level of experience. The imageCLASS MF448dw device comes with a three-year limited warranty, giving you the support, peace of mind, and value your business deserves.



SPECIFICATIONS

Main Unit

Core Functions

Standard: Print, Copy, Scan, Send, Fax

Item Code

MF448dw: 3514C003

Processor

Canon Custom Processor

Control Panel

5" Color Touch Panel

Memory

1 GB

Standard Interface Connection

USB 2.0 x2 (Host), USB 2.0 x1 (Device) High-Speed,
10/100/1000Base-T Ethernet (Network), Wi-Fi
802.11b/g/n, Wi-Fi® Direct Connection

Paper Capacity (Letter, 20 lb. Bond)

Standard: 350 Sheets
Maximum: 900 Sheets

Paper Sources (Letter, 20 lb. Bond)

Standard: 250-sheet Paper Cassette, 100-sheet
Multipurpose Tray
550-sheet Paper Cassette
(Cassette Unit-AH1)

Optional:

Paper Output Capacity (Letter, 20 lb. Bond)

Standard: 65 Sheets

Supported Media Types

Cassettes: Thin, Plain, Recycled, Thick, Bond

Multipurpose Tray: Thin, Plain, Recycled, Thick, Bond,
Label, Envelope (10 Envelopes)

Supported Media Sizes

Cassettes: Letter, Legal, Statement, Executive
Custom (Min. 4.1" x 5.8" to Max. 8.5" x 14")

Multipurpose Tray: Letter, Legal, Statement, Executive
Envelope: COM10, Monarch, C5, DL
Custom (Min. 3" x 5" to Max. 8.5" x 14")

Supported Media Weights

Cassettes: 16 lb. Bond to 32 lb. Bond (60 to 120 g/m²)
Multipurpose Tray: 16 lb. Bond to 43 lb. Bond (60 to 163 g/m²)

Warm-up Time

From Power On: 14 Seconds or Less
From Sleep Mode: 4 Seconds or Less

Dimensions (H x W x D)

Standard: 17.9" x 18.3" x 15.5"
(Desktop): (453 mm x 464 mm x 392 mm)

Installation Space (H x W x D)

Standard: 17.9" x 34.8" x 26.2"
(Desktop): (453 mm x 883 mm x 664 mm)
Fully Configured: 17.9" x 34.8" x 31.3"
(453 mm x 883 mm x 795 mm)

Weight³

Unit: Approx. 35.8 lb. (16.2 kg)
Boxed Weight: Approx. 45.9 lb. (20.8 kg)

Operating System

UFR II/PCL: Windows® 7/Windows 8.1/Windows 10/
Windows Server 2008/Windows Server 2008 R2/Windows
Server 2012/Windows Server 2012 R2/Windows Server
2016/Mac OS X v10.8.5 (or later)

Print Specifications

Printing Method

Laser Beam Printing

Print Speed⁴

Up to 40 ppm (Letter); Up to 32 ppm (Legal)

First-Print-Out Time

Approx. 5.3 Seconds

Recommended Monthly Page Volume

750 - 4,000 Pages

Print Resolution (dpi)

600 x 600

Standard Page Description Languages

UFR II, PCL®6, PCL®5

Double-Sided Printing

Automatic (Standard)

Direct Print

Available from USB Memory (JPEG, TIFF, PDF)

Printing from Mobile and Cloud-based Services¹

Apple® AirPrint®, Canon PRINT Business, Mopria™
Print Service

Fonts

PCL: 93 Fonts

Print Features

Secure Print, Page Border, Header/Footer, Page Layout,
Two-sided Printing, Collating, Booklet Printing, Grouping,
Mixed Paper Sizes/Orientations

Copy Specifications

Copy Speed

Up to 40 ppm (Letter); Up to 32 ppm (Legal)

First-Copy-Out Time (Letter)

Approx. 6.2 seconds

Copy Resolution (dpi)

600 x 600

Copy Size

Platen: Up to Letter
ADF: Up to Legal

Multiple Copies

Up to 999 Copies

Magnification

25% - 400% (1% Increments)

Preset Reductions

25%, 50%, 64%, 78%

Preset Enlargements

129%, 200%, 400%

Copy Features

Paper Setting, Favorite Settings, Two-sided, Original Type
Selection, Cancel, N-on-1, Density Adjustment, Sharpness,
Erase Frame, Collate, Copy ID Card

Scan Specifications

Type

Single-Pass Duplexing Automatic Document Feeder

Document Feeder Paper Capacity

50 Sheets (20 lb. Bond)

Document Feeder Supported Media Sizes

Legal, Letter, Statement

Document Feeder Supported Media Weights

Single and Double-sided scanning: 13-28 lb.
Bond (50-105 g/m²)

Platen Acceptable Originals

Sheet, Book

Pull Scan

ScanGear MF for TWAIN, WIA, and ICA

Scan Resolution (dpi)

300 x 600, 600 x 600

Scan-to-Mobile Devices

Canon PRINT Business

Scan Speed (Letter)

Single-sided: 13/38 ipm (300 x 300 dpi) (Color/BW)
Double-sided: 26/70 ipm (300 x 300 dpi) (Color/BW)

Memory Media

Standard USB Memory (JPEG, TIFF, PDF)

Send Specifications

Destination

Email/Internet FAX (SMTP), SMB, FTP, Super G3 FAX

Address Book

LDAP (50)/Local (300)/Speed Dial (281)

Send Resolution (dpi)

600 x 600 (Pull Scan), 196 x 204 (iFax), 300 x 300 (Other)

Communication Protocol

File: FTP, SMB
Email/iFax: SMTP, POP3, iFax (Simple)

File Format

Standard: TIFF, JPEG, PDF (Compact, Searchable)
Optional: PDF (Encrypted, Digital Signature)

Fax Specifications

Modem Speed

Super G3: 33.6 kbps
G3: 14.4 kbps

Compression Method

MH, MR, MMR, JBIG

Resolution (dpi)

400 x 400, 200 x 400, 200 x 200, 200 x 100

Sending/Recording Size

Statement to Legal

Fax Memory

Up to 512 Pages

Speed Dials

Max. 281 Dials

Group Dials/Destinations

Max. 299 Dials

Sequential Broadcast

Max. 310 Addresses

Memory Backup

Yes

Fax Features

RX Mode, Resolution, Two-sided Original, Density,
Sharpness, Favorite Settings, Duplex Fax

Security Specifications

Authentication

Standard: Department ID Authentication

Data

Standard: Verify System at Startup

Network

Standard: IP/MAC Address Filtering, IPSEC, TLS
Encrypted Communication, SNMP V3.0, IEEE
802.1X, IPv6, SMTP Authentication, POP
Authentication before SMTP

Document

Standard: Secure Print, High Compression PDF,
Searchable PDF

Optional: Encrypted PDF, User and Device Signatures

Wi-Fi Authentication Methods

Wi-Fi
Infrastructure WEP 64/128 bit, WPA-PSK (TKIP/AES),
Mode: WPA2-PSK (AES)
Wi-Fi Access
Point: WPA2-PSK (AES)

Environmental Specifications

Operating Environment

Temperature: 50 to 86° F
Humidity: 20 to 80% RH (no condensation)

Power Requirements

AC 120-127 V:6.5 A, 60 Hz

Power Consumption

Maximum: Approx. 1330 W
Standby: Approx. 10 W
Sleep Mode: Approx. 0.9 W
Typical
Electricity
Consumption
(TEC) Rating:
0.34 kWh

Standards

ENERGY STAR® Qualified, Currently Rated EPEAT Silver²

CONFIGURATION AND ACCESSORIES



OPTIONAL CASSETTE-AHI
Item: 0732A033

Extended Service Plans Available For Purchase

If service is required, you may receive a replacement model* via advanced exchange. In this case, you'll be instructed to return the damaged unit to Canon in the replacement packaging, which also includes a prepaid shipping label. Or you may choose to carry your existing equipment to a local Authorized service facility for repair.

Canon eCarePAK (Exchange/Carry-In)

Canon extended service plans extend standard three-year warranty⁵ support to cover additional one to two years.

One-Year: 5707B042

Two-Year: 5707B043

* Replacement model may be new or refurbished quality.

Accessories

Card Readers*

Copy Card Reader-F1 (Item Code: 4784B001)

Department ID authentication with Canon magnetic stripe cards

*Attachment Kit required.

Print Accessories

Barcode Print Kit-E1 (Item Code: 5143B001)

Installs bar code fonts for bar code printing

Send PDF Security Kit-E1 (Item Code: 9594B001)

Send encrypted PDFs and add digital device signatures

Control Interface Kit-C1 (Item Code: 5145B001)

Connects third-party card reader or coin operator system to device

GENUINE® CONSUMABLES

Always look for the Canon anti-counterfeiting hologram on your Canon GENUINE product packaging.

- Cartridge 057[▲]
(Item No.: 3009C001)
Yields 3,100 Pages

- Cartridge 057 H
(Item No.: 3010C001)
Yields 10,000 Pages



Use of Canon GENUINE toner cartridges helps provide longer equipment life, high yields, reliable performance, high-quality output, and minimal jamming or issues.

[▲] This Cartridge is included with purchase.

¹ Canon PRINT Business is a free app available on the App Store® and Google Play™ Store. For more information, including compatibility, please visit usa.canon.com/mobile-app. Please see the respective websites for Apple AirPrint and Mopria Print Service for compatibility and additional information.

² For current EPEAT rating (Gold/Silver/Bronze), please visit epeat.net.

³ Includes consumables.

⁴ Print speed is based on internal testing. Print speed may vary, depending on the number of copies selected as well as the settings for size, type, and orientation of paper.

⁵ Warranty program is subject to certain conditions and restrictions. See warranty card for details.

USA.CANON.COM



Canon

As an ENERGY STAR partner, Canon U.S.A., Inc. has qualified these models as meeting the ENERGY STAR energy efficiency criteria through an EPA recognized certification body. ENERGY STAR and the ENERGY STAR mark are registered U.S. marks. Canon, imageCLASS, and the GENUINE logo are registered trademarks of Canon Inc. in the United States and may also be registered trademarks or trademarks in other countries. Wi-Fi is a registered trademark of the Wi-Fi Alliance. Android and Google Play are trademarks of Google Inc. iPad, iPhone, iPod touch, Mac, and the App Store are trademarks of Apple Inc., registered in the United States and/or other countries. AirPrint and the AirPrint logo are trademarks of Apple Inc. Mopria and the Mopria logo are trademarks of the Mopria Alliance, Inc. Windows and Windows Server are trademarks of Microsoft Inc. in the United States and/or other countries. Canon products offer certain security features, yet many variables can impact the security of your devices and data. Canon does not warrant that use of these features will prevent security issues. Nothing herein should be construed as legal or regulatory advice concerning applicable laws; customers must have their own qualified counsel determine the feasibility of a solution as it relates to regulatory and statutory compliance. All other referenced product names and marks are trademarks of their respective owners. Specifications and availability subject to change without notice. Not responsible for typographical errors.
©2020 Canon U.S.A., Inc. All rights reserved.