



EOS R

SYSTEM

BE THE **R**EVOLUTION

Introducing the next evolution of EOS. It's a whole new system with a new, game-changing RF lens mount that delivers optical excellence today and incredible possibilities for future designs. The new full-frame mirrorless EOS R camera provides gorgeous results, with four RF lenses reimagining Canon optics and three optional Mount Adapters that help ensure you can bring your EF and EF-S lenses along while select adapters provide additional functionality. Advanced features and compact designs, all in the brand-new EOS R system that's designed to take today's visual storytellers into tomorrow.





© Lindsay Adler, Canon Explorer of Light

EOS R SYSTEM: REIMAGINE OPTICAL EXCELLENCE

Marking a new chapter in the history of EOS, the EOS R system is built for imagemakers who demand high-performance capture, a full-frame sensor and excellent ergonomics. A 54mm diameter lens mount enables RF lenses to have large rear elements, while a mirrorless design brings them closer to the sensor for bright, sharp and compact lens designs. A 12 pin electronic connection delivers fast communication between the camera and the lens, facilitating a versatile and powerful system. Plus, with a variety of mount adapter options providing compatibility with EF and EF-S lenses, it's easy to incorporate your EOS R system into an EOS system and expand your creative opportunities.

A NEW STANDARD IN OPTICAL IMAGE QUALITY

New RF Mount

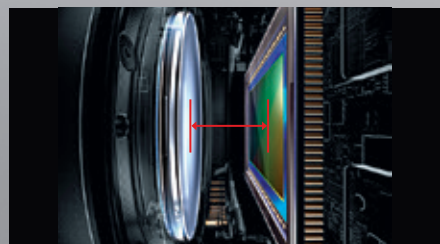
At the heart of the EOS R system lies the amazing RF mount. It's newly designed to deliver the ideal combination of speed, durability and flexibility in optical design for excellent performance and future system expansion, plus compatibility with EF and EF-S lenses*.

54mm Large Diameter and Short Back Focus

The large diameter and decreased distance between the rear lens element and sensor enable a compelling combination of image quality, performance and compact lens design. The new RF mount retains the same, large 54mm diameter as the current Canon EF mount, but



thanks to the EOS R camera's mirrorless structure, the rear lens element can be much closer to the image plane. This combination opens up a number of possibilities. The rear element of RF lenses can be larger in diameter, improving image quality at the corners and outer edges of the frame. Larger rear elements mean front elements can be smaller, meaning less strong refracting and bending of light rays within the lens, enhancing optical performance. Most importantly, the EOS R system opens the door to the future. It unlocks more freedom and flexibility in lens designs, allowing faster lenses with increased optical performance in more compact forms than before.

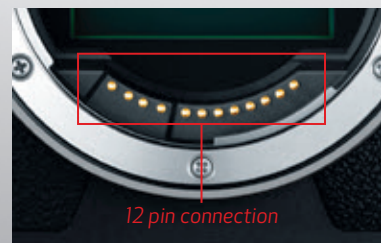


RF MOUNT



Data Transmission through 12 pin Electrodes

A 12 pin connection between the camera and lens means communication at a higher speed with larger amounts of data transfer, enabling incredibly fast AF, high IS and image optimization. It's a system designed to expedite operations that's ready for future expansions.



20mm Flange Focal Distance

The RF mount is mounted just 20mm from the image sensor. This provides flexibility for future lens designs and the durability needed for professional, real-world operation, even when using super telephoto lenses.

54MM
DIAMETER



SHORT
BACK FOCUS



© Bruce Dorn, Canon Explorer of Light

BEYOND FULL COMPATIBILITY

Discover New Possibilities with EF/EF-S Lenses

Mount adapters deliver seamless connections between the EOS R camera and EF and EF-S lenses with all functions intact. Offering L series level weather and dust sealing, the mount adapters are even compatible with EF extenders like the Extender EF 1.4x III to extend your camera's optical reach. With an entire line-up of EF and EF-S lenses at your disposal, these mount adapters ensure endless creative possibilities for the EOS R camera.



Additional Control with EF/EF-S Lenses

Take full advantage of the EOS system by using any EF/EF-S lens with the EOS R camera by way of three optional mount adapters, including one featuring a customizable control ring and another allowing you to drop in a circular polarizing or variable ND filter.



* Optional Mount Adapter EF-EOS R is required when using EF/EF-S lenses with an EOS R camera.

NEW LENS DESIGNS WITH STELLAR IMAGE QUALITY

AMAZING PERFORMANCE

Optical Image Stabilization

Select RF lenses feature optical image stabilization technology that's designed to work in conjunction with the EOS R camera. Both the camera and the lens share data to dramatically reduce camera-shake blur, regardless of the situation and whether shooting video or stills, to deliver impressively clear results.

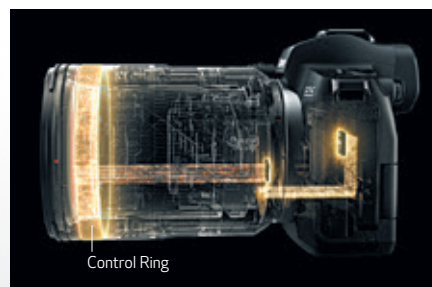
Lens Information Display

Another helpful feature, the EOS R camera can display lens information right in the viewfinder, making it easy to confirm the lens's focal length without looking away from the subject at hand.



Control Ring

All RF lenses incorporate a control ring on the lens barrel that can directly adjust numerous settings including shutter speed, aperture, exposure compensation and more. Located towards the front of the lens and effectively adding a third dial to the EOS R camera's main dial and quick control dial, the control ring has a tactile, easily distinguished surface and features a clicking mechanism that provides tangible feedback for confident use while looking through the viewfinder.



Variety of Mount Adapters

To use EF and EF-S lenses, and to incorporate your EOS R system into a larger EOS system, three adapters enable unfettered operation of EF/EF-S lenses as well as extension tubes with no loss of light.



MOUNT ADAPTERS EF-EOS R

Mount Adapter EF-EOS R

Lightweight and compact, the Mount Adapter EF-EOS R connects EF and EF-S lenses to the EOS R camera, exponentially expanding the list of compatible lenses.

RF LENS LINE-UP



RF 28-70mm F2 L USM

The RF 28-70mm F2 L USM features a maximum aperture of f/2, offering unparalleled performance throughout its zoom range. With L series optics, it offers the flexibility and performance of a handful of fixed focal length lenses, delivering superlative performance from 28-70mm.



RF 50mm F1.2 L USM

The RF 50mm F1.2 L USM lens delivers gorgeous images in a large variety of situations. Designed specifically for the EOS R system, its f/1.2 aperture means amazing performance in low light and gorgeous, detailed images with evocative background blur.



RF 24-105mm F4 L IS USM

The RF 24-105mm F4 L IS USM is versatile with its broad zoom range and constant f/4 maximum aperture. It's the first L series lens to feature Canon's fast and speedy NANO USM, making it ideal for landscapes, portraits and much more.



RF 35mm F1.8 Macro IS STM

Compact, lightweight and easy to carry, the RF 35mm F1.8 Macro IS STM lens offers amazing versatility in a wide-angle macro lens. It has a 0.5x magnification ratio and a close focusing distance of 0.56 ft./0.17m for excellent macro photography.



Control Ring Mount Adapter EF-EOS R

The Control Ring Mount Adapter EF-EOS R adds a control ring like those found on RF lenses, providing the same level of control with your EF and EF-S lenses and supporting the same setting configuration regardless of lens.



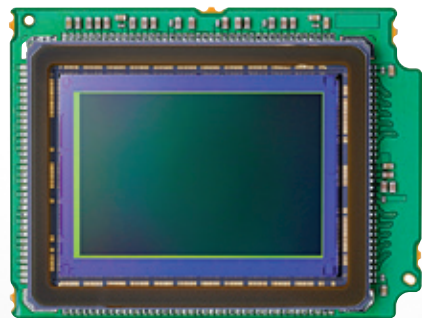
Drop-In Filter Mount Adapter EF-EOS R

The Drop-In Filter Mount Adapter EF-EOS R enables compatibility with EF and EF-S lenses and includes drop-in filter capability for use with circular polarizing filters or variable ND filters. This enhancement enables compatibility with numerous lenses regardless of their front diameter, and makes filter use possible with lenses like the ultra wide EF 11-24mm f/4L USM lens or the tilt-shift TS-E 17mm f/4L lens which cannot accept a filter on the front.

ENTER THE NEW WORLD OF THE EOS R CAMERA

SUPERB IMAGE QUALITY

30.3 Megapixel Full-frame CMOS Sensor and DIGIC 8 Image Processor



The EOS R camera features a 35mm full-frame CMOS sensor with approx. 30.3 effective megapixels for stunning results with incredible detail and clarity, even in low-light situations. It's powered by the DIGIC 8 Image Processor, which enables an expansive ISO range, enhances Image Stabilization and turbocharges operations across the board for outstanding image quality and impressive performance.



ISO 40000

The EOS R camera has a standard ISO sensitivity range of 100–40000 for stills and 100–25600 for video (100–12800 for 4K video shooting). Combined with the EOS R camera's remarkable low-light AF performance, still and video shooting is possible even in dark situations in a variety of places and occasions.



ISO 40000



Approx. 88% x 100% AF area coverage**

Sophisticated AF System and Wide AF Area

The EOS R camera's AF system features an incredible 5,655 manually selectable AF points*. Combined with a focus area that covers approx. 88% horizontal and 100% vertical** when using RF lenses and select EF lenses, this AF system helps ensure swift and accurate focus no matter where your subject is located in the frame.

High-speed Focusing

The EOS R camera's highly responsive Dual Pixel CMOS AF system can deliver sharp focus within 0.05 seconds***. This means fast action can be captured and focus can be maintained with speed, accuracy and ease.

AMAZING AUTOFOCUS



EV -6^

EV -6^ Low-light Autofocus

Amazing for nighttime photography or in very low light, the EOS R camera's brilliant AF can operate in light as dim as a light rating of EV -6^ where other AF systems may fail or search. Phenomenal AF is achieved even when using lenses with high F numbers. This ultra-sensitive AF works in concert with the EOS R's EVF to clearly capture subjects even when there's limited light.

Touch and Drag AF

Touch and Drag AF makes it fast and easy to select a focus point without taking your eye away from the viewfinder. Using the Touchscreen LCD, it's as simple as pointing to the desired area of focus. The chosen AF point is then displayed in the camera's EVF for quick confirmation.

Variety of AF Modes

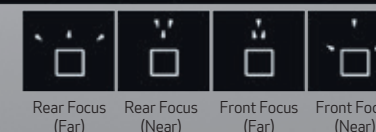
The EOS R camera features an expanded range of selectable AF modes to adapt to specific situations and subjects. For example, with Eye Detection AF, when the EOS R detects a human face, it automatically uses the subject's eye as the autofocus point and maintains focus as the subject moves through the image frame.

f/8 and f/11 Compatible in All AF Areas

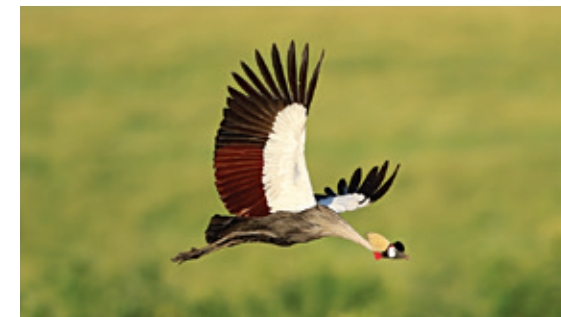
With the EOS R camera, autofocus will operate over nearly the entire image area even when used with compatible f/8 and f/11 lenses. This means the EOS R can easily achieve sharp AF using lenses with smaller apertures, and is even compatible with select EF extenders for uncompromised shooting at an expanded range of focal lengths.

Focus Peaking and Dual Pixel Focus Guide

For help when using manual focus, Focus Peaking helps establish the focus area quickly and clearly by indicating the area in focus with a colored line. It's usable with the Dual Pixel Focus Guide feature, which displays where the position of focus is relative to the subject and is especially helpful when recording video.



ADVANCED 4K VIDEO



4K 30p, Full HD 60p, HD 120p

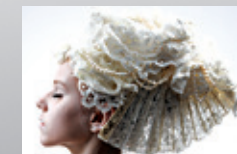
Whether shooting videos for your blog or to share with friends online, or as a secondary camera on a large production, the EOS R camera offers advanced recording features such as 4K at 29.97 fps, Full HD at 59.94 fps and HD at 119.9 fps. Helpful functions include distortion correction during recording and Movie Digital IS. Additionally, video can be recorded during still photo shooting by simply pressing the Movie Shooting button.

4K IPB/ALL-I MP4 H.264

The EOS R camera can record 4K video using IPB or ALL-I compression^^ and save them as MP4 files. This helps provide further flexibility with file size, image quality and integration with video clips recorded with other cameras.

Canon Log

Built-in Canon Log gamma reduces heavy shadows and blown-out highlights, delivering movie images with approximately 12 stops of dynamic range (at ISO 400) for excellent shadow and highlight detail. Ideal for post-production and multi-camera set-ups, Canon Log is an indispensable feature that makes the EOS R camera a serious moviemaking performer.



Normal image



Canon Log image

HDMI Output for 4K 10-bit 4:2:2 Video

The EOS R camera features an HDMI port that's useful for outputting recorded video directly to an external drive. For maximum color and dynamic range when shooting with Canon Log, the EOS R can even output 10-bit movie recordings in ITU-R BT.2020 color.

* Available AF points may decrease when shooting with AF cropping or in movie mode, or depending on camera settings or lens attached. ** When shooting still photos. Actual coverage varies depending on the lens in use. *** Based on the results of AF speed tests in accordance with CIPA guidelines. Results may vary depending on shooting conditions and lens in use. Relies on internal measurement method. Test conditions: • Brightness at time of distance measurement: EV12 (regular temperature, ISO 100) • Shooting mode: M • Lens in use: RF 24–105mm F4 L IS USM, with a focal distance of 24mm • Live-view mode: On (with manual shutter button operation) • AF mode: Live single-point AF (central) • AF operation: One-shot AF ^ When using RF 50mm F1.2 L USM, with central AF point. ^^ 4K All-I recording requires an SD Memory card with a UHS-II, video speed class 60 (V60) or higher.

ROBUST FEATURES MAXIMIZE YOUR SHOOTING CAPABILITY

IMPRESSIVE OPERABILITY

3.69 Million-dot OLED EVF

The EOS R camera features a high-precision 0.5-inch OLED (Organic Light-Emitting Diode) EVF with approx. 3.69 million dots and a 23mm eyepoint. Displaying a bright image and extensive shooting information that rotates with the camera, the viewfinder excels in bright conditions where viewing the camera's LCD may prove difficult.



Excellent Visibility

The EOS R camera's electronic viewfinder has been created to provide a bright, sharp and colorful 100% view of the subject at hand. Equipped with an aspherical lens, the EVF shows a crisp and vivid image with minimal aberration or distortion, even when the eye moves off the center of the visual field.

High Eyepoint

The EOS R camera's EVF has a bright, 23mm-high eyepoint design that creates a generous 30mm space between your nose and the rear of the viewfinder. This makes it easy to compose and view images in the viewfinder with or without glasses. A diopter adjustment of -4 – +2 means it's simple to change as needed to suit various users.

Multi-function Bar

The EOS R camera's newly designed multi-function bar provides a high level of functionality and customization options for fast, intuitive shooting. Positioned to sit right under the thumb, the touch bar allows the user to change settings, check manual focus, browse finished photos and more.



Dot-matrix LCD Panel

An LCD panel on the top of the EOS R camera features a dot-matrix display that gives real-time information on the camera's status, recording mode and more. It can be inverted from black to white to suit viewing preferences or the ambient light source.



3.15" Vari-angle Touchscreen LCD

The EOS R camera has a flexible 3.15-inch Vari-angle LCD that makes it easy to compose and shoot from virtually any angle. Its touchscreen enables setting changes and more with just a tap.

Flexible Priority Exposure Mode (Fv Mode)

With the EOS R camera's all-new Flexible-priority AE mode (Fv), you can easily set features such as shutter speed, aperture and ISO to respond automatically or manually for greater convenience and flexibility.

USB Charge Compatible

The EOS R camera is compatible with the USB Power Adapter PD-E1* for in-camera charging via USB. Featuring an industry standard USB-C connector, the USB Power Adapter PD-E1 makes for easy charging without needing to remove the battery from the camera.

Silent Shutter

Especially helpful for wildlife photography, journalism and quiet situations, the EOS R camera has a silent shutter feature that uses an inaudible electronic shutter instead of the camera's focal-plane shutter.



NEW MOBILE RAW WORKFLOW

DPP Express

Canon's Digital Photo Professional Express makes speedy processing of JPEGs and CR3 RAW files on a compatible handheld device a breeze. Working with Canon's Camera Connect app** to create a streamlined wireless workflow, DPP Express lets you adjust settings right on your mobile device, saving files to the cloud, a PC or your camera.



IMPROVED DURABILITY

Magnesium Alloy Body

Comfortable and solid in the hand, the EOS R camera features a rigid yet lightweight magnesium alloy chassis that enhances body durability while shielding the camera from electromagnetic radiation and heat. It also has a tempered front panel for internal rigidity.



Shutter Closes if Powered Off without Lens

The EOS R camera has a mechanism to close the shutter when the camera is powered down and adjust settings accordingly to protect the shutter curtain.



Dust and Water-resistant

The EOS R camera is designed for use in a variety of weather conditions. Sealing materials are used in critical areas, while its precise design and construction help to minimize accidental penetration of dust and moisture in the rest of the camera body.

Shutter Durability

The EOS R camera has a robust, electronically controlled focal-plane shutter that's rated to approx. 200,000 cycles for consistent and reliable use. It shoots as fast as 1/8000 sec. at up to 8 fps, and up to 5 fps with Servo AF.



Camera Connect App**

Canon's Camera Connect app uses the EOS R camera's built-in Wi-Fi® and Bluetooth® compatibility to connect to a compatible mobile device. This allows a number of functions from easy image transfer to remote shooting, to adding GPS information to your photos and videos and more.



CR3

The EOS R camera can capture photos as Compact Raw, or C-Raw (.CR3) files, saving valuable time and storage space with ease. Smaller than RAW files, C-Raw files can be processed in camera, can render an L-sized JPEG, are compatible with the Digital Lens Optimizer and more.



PHOTOGRAPHED BY
JIMMY CHIN
Canon Explorer of Light

“ This is the kind of system I’ve been waiting for – being really lightweight. Having a new lens system that’s extremely sharp. Having the adaptability to use existing EF lenses. This is the camera I’ve been waiting for. ”



SETTINGS

1/160_{sec.}
f/4
ISO 100

EQUIPMENT



EOS R



RF 35mm
F1.8 Macro IS STM



PHOTOGRAPHED BY
JIMMY CHIN
Canon Explorer of Light

“ Being able to have a smaller system to carry around, along with some of the new options on the new EOS R, is amazing. All and all it makes my job a little easier or at least it allows me to focus more on the shooting, which is awesome. ”



SETTINGS

1/200_{sec.}

f/22

ISO 320

EQUIPMENT



EOS R



EF 11-24mm
f/4L USM



Mount Adapter
EF-EOS R



PHOTOGRAPHED BY
LINDSAY ADLER
Canon Explorer of Light

“ I was thrilled to see how the system’s new features made my job easier and allowed me to capture striking, storytelling imagery, without having to worry if the gear could keep up. ”



—
SETTINGS

1/100_{sec.}

f/2

ISO 800

—
EQUIPMENT



EOS R



RF 28-70mm
F2 L USM



PHOTOGRAPHED BY
LINDSAY ADLER
Canon Explorer of Light

“ Whether my subject was moving or I was shooting in near-complete darkness, I had no problem getting tack-sharp focus in every shot. It was a relief to know my gear wasn’t going to hold me back from executing my vision. ”



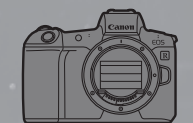
SETTINGS

1/200_{sec.}

f/4

ISO 320

EQUIPMENT



EOS R



RF 24-105mm
F4 L IS USM



BEHIND THE SCENES WITH DEVIN GRAHAM

Director and filmmaker behind YouTube's
DevinSuperTramp

“For us, it's all about getting the shot no one else can get, and a lot of this has to do with the camera. The new EOS R will become one of our main cameras. It has a very small footprint, yet is able to create amazing images. As for the lenses, the new Canon RF 28-70mm F2 L USM has just become one of my all-time favorites. I'll be bringing it on every project.”



EQUIPMENT USED ON SET



EOS R



RF 28-70mm
F2.8 L USM



RF 50mm
F1.2 L USM



EF 11-24mm
f/4L USM



Mount Adapter
EF-EOS R



PHOTOGRAPHED BY
BRENT STIRTON
Canon Europe Ambassador

“ To look through a lens for a living is a huge privilege. This particular camera offers me more options than ever before. It enables me to forget about the tools and just get on with telling the story. ”



SETTINGS

1/200_{sec.}

f/18

ISO 200

EQUIPMENT



EOS R



RF 24-105mm
F4 L IS USM

SPECIFICATIONS

EOS R		
Image Sensor		30.3 Megapixel Full-frame CMOS (36.0 x 24.0mm) Sensor
Image Processor		DIGIC 8
Lens Mount		Canon RF mount
Compatible Lenses		RF lenses (Compatible with EF & EF-S lenses when using optional Mount Adapter EF-EOS R)
Autofocus	Focus Control	Phase-difference detection system with image sensor (Dual Pixel CMOS AF)
	AF Area	Approx. 88% horizontal by 100% vertical (Area size varies according to compatible lens)
	Number of Focusing Points	Maximum 143 automatically selected Maximum of 5,655 manually selectable* (When selected with cross keys)
	AF Working Range	EV -6 to 18 (f/1.2, at 73°F/23°C, ISO 100, One-Shot AF)
	AF Method	Face+Tracking AF, 1-point AF**, Expand AF area (Above, below, left and right), Expand AF area (Around), Zone AF, Large Zone AF (Vertical), Large Zone AF (Horizontal)
Maximum Frames Per Second		High-speed continuous shooting: Approx. 8.0 fps, With Servo AF: Approx. 5.0 fps (shooting speed priority)
Still Image Capture	Image File Format	JPEG, RAW (14 bit Canon original), C-Raw (Canon original)
	File Size	3:2 Aspect Ratio: Large/RAW/C-Raw: 6720 x 4480, Medium: 4464 x 2976, Small 1: 3360 x 2240, Small 2: 2400 x 1600
Video Recording	Video File Format	MP4 (MPEG4 AVC/H.264 compression)
	Video Audio Format	ALL-I uses Linear PCM, IPB uses AAC through built-in stereo microphone or optional external microphone
	Video Recording	4K*** 3840 x 2160: 29.97 fps/24.00 fps/23.98 fps Full HD 1920 x 1080: 59.94 fps^/29.97 fps/24.00 fps/23.98 fps HD 1280 x 720: 119.9 fps/59.94 fps/29.97 fps
Canon Log	Dynamic Range	Approx. 800%
	Canon Log Recording	4K/Full HD/HD YCbCr 4:2:0 BT.709 8-bit (Internal Memory) 4K/Full HD/HD YCbCr 4:2:2 BT.709 8-bit (HDMI Output) 4K YCbCr 4:2:2 BT.709/BT.2020 10-bit (HDMI Output)
Exposure Control	Metering Modes	Real-time metering
	Metering Range	EV -3 to 20 (at 73°F/23°C, ISO 100)
	Shooting Mode	Scene Intelligent Auto, Flexible-priority AE, Program AE, Shutter-priority AE, Aperture-priority AE, Manual Exposure, Bulb Exposure, Custom Shooting Modes: C1, C2, C3
	ISO Speed	ISO 100 to 40000 (in 1/3-stop or whole-stop increments)
	ISO Expansion	L: 50, H1: 51200, H2: 102400
	Exposure Compensation	±3-stops in 1/3- or 1/2-stop increments
	AE Lock	Auto, Manual
Recording Media		SD/SDHC/SDXC Memory Cards
Shutter	Type	Electronically controlled focal-plane shutter (electronic first curtain, mechanical second curtain)
	Shutter Speed	1/8000–30 sec., bulb.
	Maximum Syn. Speed	X-sync at 1/200 sec.
Viewfinder	Type	OLED Electronic Viewfinder
	Screen Size	0.5-inch (approx. 1.27cm diagonal)
	Magnification	Approx. 0.76 magnification (with 50mm lens at infinity, -1m ⁻¹)
	Angle of View	Approx. 35.2° angle of view
	Resolution	Approx. 3.69 million dots
LCD Monitor	Type	TFT Color ClearView II LCD Touchscreen
	Screen Size	3.15-inch (approx. 3.15-inch diagonal)
	Resolution	Approx. 2.10 million dots
Wi-Fi® Connectivity		IEEE 802.11b/g/n Compatible
Bluetooth Connectivity		Bluetooth® Version 4.1 compliant
Exterior	Dimension (W x H x D)	Approx. 5.35 x 3.87 x 3.32 in. / 135.8 x 98.3 x 84.4mm Approx. 5.35 x 3.87 x 2.67 in. / 135.8 x 98.3 x 67.7mm (from grip to monitor)
	Weight (CIPA)	Approx. 1.46 lbs. / 660g (including battery pack and SD memory card)

* Available AF points may decrease when shooting with AF cropping or in movie mode, or depending on camera settings or lens attached. ** [AF frame size] can be set to [Small]. *** 4K All-I recording requires an SD Memory card with a UHS-II, video speed class 60 (V60) or higher. ^ Full HD 59.94 fps not available during EF-S cropped shooting.

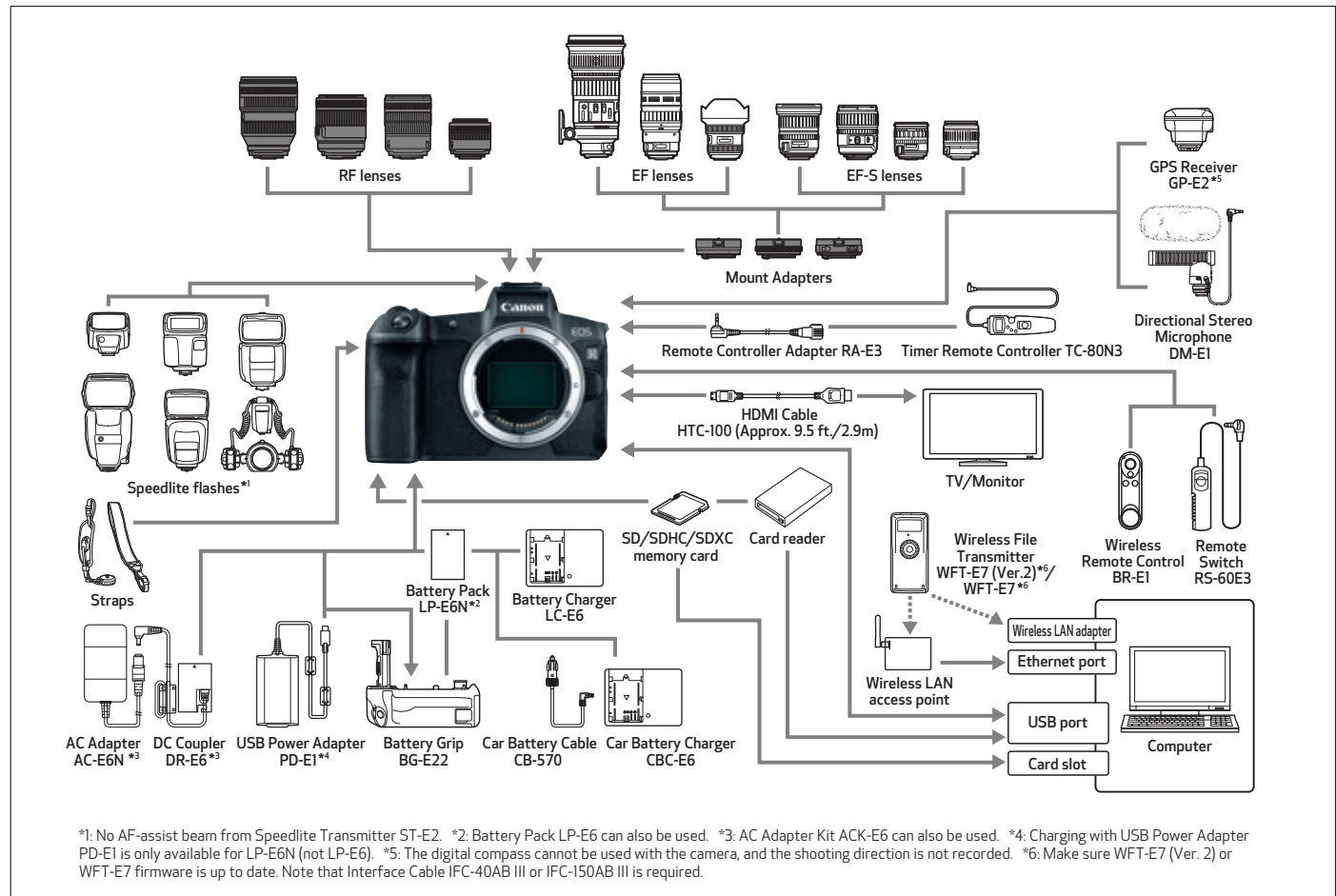
RF 28–70mm F2 L USM	
Lens Type	Canon RF Lens
Focal Length & Maximum Aperture	28–70mm, f/2
Lens Construction	19 elements in 13 groups
Diagonal Angle of View	75°00' – 34°00'
Focusing Actuator	Ring USM
Minimum Focusing Distance	1.28 ft. / 0.39m
Aperture Blades	9 blades
Filter Size	95mm
Maximum Diameter & Length	Ø4.09 x 5.50 in. / Ø103.8 x 139.8mm
Weight	Approx. 3.15 lbs. / 1430g

RF 24–105mm F4 L IS USM	
Lens Type	Canon RF Lens
Focal Length & Maximum Aperture	24–105mm, f/4
Lens Construction	18 elements in 14 groups
Diagonal Angle of View	84°00' – 23°20'
Focusing Actuator	NANO USM
Minimum Focusing Distance	1.48 ft. / 0.45m
Image Stabilization	Provided (Up to 5 stops with compatible camera)
Aperture Blades	9 blades
Filter Size	77mm
Maximum Diameter & Length	Ø3.29 x 4.22 in. / Ø83.5 x 107.3mm
Weight	Approx. 1.54 lbs. / 700g

RF 50mm F1.2 L USM	
Lens Type	Canon RF Lens
Focal Length & Maximum Aperture	50mm, f/1.2
Lens Construction	15 elements in 9 groups
Diagonal Angle of View	46°00'
Focusing Actuator	Ring USM
Minimum Focusing Distance	1.31 ft. / 0.4m
Aperture Blades	10 blades
Filter Size	77mm
Maximum Diameter & Length	Ø3.54 x 4.25 in. / Ø89.8 x 108.0mm
Weight	Approx. 2.09 lbs. / 950g

RF 35mm F1.8 Macro IS STM	
Lens Type	Canon RF Lens
Focal Length & Maximum Aperture	35mm, f/1.8
Lens Construction	11 elements in 9 groups
Diagonal Angle of View	63°00'
Focusing Actuator	Gear-type STM
Minimum Focusing Distance	0.56 ft. / 0.17m
Image Stabilization	Provided (Up to 5 stops with compatible camera)
Aperture Blades	9 blades
Filter Size	52mm
Maximum Diameter & Length	Ø2.93 x 2.47 in. / Ø74.4 x 62.8mm
Weight	Approx. 0.68 lbs. / 305g

SYSTEM CHART





See what's new on a daily basis, and more.
facebook.com/CanonUSA



Stay up to date on the latest videos from Canon.
youtube.com/CanonUSA



Follow us for news, product launches, events and more.
twitter.com/CanonUSAimaging

Certain images and effects simulated. Products not shown to scale. All data is based on Canon's Standard Test Method. Specifications and availability are subject to change without notice. Weight and dimensions are approximate. Not responsible for typographical errors.

© 2018 Canon U.S.A., Inc. All rights reserved. Canon, DIGIC, EOS and EOS R are registered trademarks of Canon Inc. in the United States and may also be registered trademarks or trademarks in other countries. All other product names, brand names and logos are trademarks or service marks of their respective owners.

Use of genuine Canon accessories is recommended; these products are designed to perform optimally when used with genuine Canon accessories.

Warning: Unauthorized recording of copyrighted materials may infringe on the rights of copyright owners and be contrary to copyright laws.

1-800-OK-CANON
usa.canon.com/eos

Canon U.S.A., Inc.
One Canon Park
Melville, NY 11747 U.S.A.

Canon Canada, Inc.
6390 Dixie Road
Mississauga, Ontario L5T 1P7 Canada

Canon Mexicana, S. de R.L. de C.V.
Blvd. Manuel Ávila Camacho No. 138, Piso 17
Col. Lomas de Chapultepec
C.P. 11000 México, D.F. México