

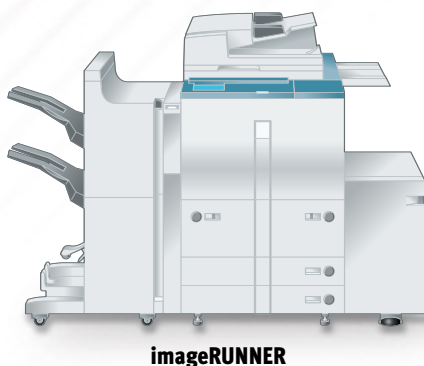
Web Access

- Do you print a lot of Internet pages?
- Does your company keep many forms on its intranet that often are printed?
- Do you have employees who don't have desktop or laptop PCs but require occasional access to the Internet to print out forms?
- Are you constantly printing Internet directions?

Solution

Web Access via Your imageRUNNER® Device

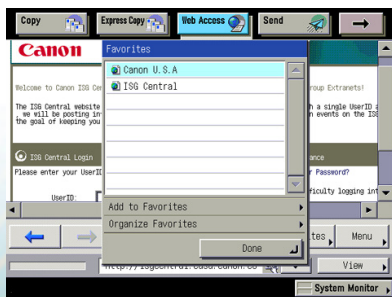
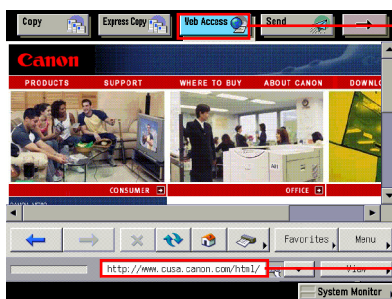
With the imageRUNNER device's optional Web Access Software, you can view the Internet directly from the system. Users accustomed to printing Web pages, including as newspaper articles, product listings, directions, and PDF forms, now can simply access the page and print directly from the imageRUNNER device's control panel.* You can store up to 100 Web destinations with the Favorites function. Realizing the importance of maintaining a secure environment, the Web browser includes many features to help protect your device from outside threats and improper use.



How Do You Do It?

Web Browser Viewing/Printing from the imageRUNNER Device:

1. Press the [Web Access] tab from the LCD panel.
2. Press the [Keyboard] icon to enter a Web address or choose a Favorite.
3. Using the digital keyboard, enter a URL (be sure to include **http://**).
4. Press [Done].
5. Press the [Print] icon to access the print settings.
6. Choose [Print Settings]. Set the paper source, page size, and orientation.
7. Press [Start Print].





Office Receptionist

Every single day, the office receptionist needs to print out directions to the office, the distribution center, the nearest hotel, the airport, the nearest and best Italian restaurant, and so on. By storing all the Internet-based directions in the Web browser of the Internet, the receptionist can easily and simply print the directions directly from the imageRUNNER device.



Manufacturing Company

Because of the nature of their work, Acme manufacturing employees don't have individual desktop or laptop PCs. However, like all employees, they need to access the company's intranet to print out important benefits and HR forms. Fortunately, they can simply go to the imageRUNNER device located in the break room and print out the forms utilizing the Web Access function.



Purchasing Department

The Director of Purchasing for a parts manufacturing company spends the majority of his days meeting with potential suppliers. After each meeting, he invariably receives the same request: "Can you give me a printout of your entire product line that I can take back to the office with me?" Because he knows that the corporate Web site maintains the most current listing of products, he simply walks to the imageRUNNER device, accesses the corporate product listing page bookmarked in the Web browser, and prints out the hard copy. The interface is so user-friendly that he sometimes has the supplier print it himself!



Retail Banks

A large bank with branch offices throughout the U.S.A. has one of the largest networks of ATM locations in the country. Because they are constantly adding and subtracting locations, employees and clients alike are trained to access the company's Web site to download and print the PDF of the latest list of locations. By simply bookmarking this particular page on the imageRUNNER device's Web browser, anyone can simply walk up to the device, access the latest form via the Internet, print the PDF file, and know that they have the latest listing of ATMs.

NOTE: The scenarios listed above are fictitious and are for illustrative purposes only.

Web Access

Benefits

- Companies with employees who do not have desktop or laptop PCs can still access the Internet from the imageRUNNER to print out important forms.
- Conveniently extends the power of the Internet to a shared device while minimizing exposure of the company to any unnecessary security risks.
- Simplifies the process of accessing and printing out PDF forms and Internet pages.

FAQ

Q. Can I set up Favorite buttons for imageRUNNER device Web Access?

A. Yes. There is a Favorites button next to the Menu button for adding and editing bookmarks. An imageRUNNER device can store up to 100 Web sites.

Q. Does having Web Access Software make the system more vulnerable to viruses?

A. Not really. Viruses are generally designed and targeted to run on specific operating systems. The imageRUNNER devices utilize a unique operating system which is not as susceptible to viruses as commonly found operating systems like Microsoft® Windows®.

Q. What other security features are available through the imageRUNNER devices' browser?

A. Though not intended to be used as the primary vehicle to surf the Internet, there are a number of security restrictions in place. A user can select whether to use SSL settings for certificates, and can specify settings for the cache and cookies so they can be erased. And an IT manager can restrict certain URLs.

Q. What happens if I want to print a PDF file and I'm prompted for a user ID and password?

A. You can simply use the imageRUNNER device's embedded QWERTY alphanumeric keyboard to enter the appropriate data.

Q. What types of Web page formats are supported?

A. HTML, CSS, JavaScript Subset, DOM, HTTP, SSL. In addition, the following image formats are supported: GIF, Animation

GIF, JPEG, Progressive JPEG, PNG, BMP. The following formats are NOT currently supported: Java Applets and Flash™.

Q. What types of settings can I specify when printing Web pages or PDF files?

A. You can specify numerous settings when printing Web pages and PDF files. For example, you could set the paper size, two-sided printing, number of copies, and finishing modes such as collate, group, or staple.

Q. Can I print pages using the Web Access Software when an imagePASS controller is installed?

A. Printing Web pages and downloadable PDF files through the Web Access Software requires the Canon Multi-PDL Printer Kit to be installed.

Canon KNOW HOW®

1-800-OK-CANON
www.usa.canon.com

Canon U.S.A., Inc.
One Canon Plaza
Lake Success, NY 11042

© 2005 Canon U.S.A., Inc. All rights reserved.

Microsoft and Windows are registered trademarks of Microsoft Corporation in the United States and/or other countries. Flash is a trademark of Macromedia, Inc. in the United States and/or other countries. Java is a trademark or registered trademark of Sun Microsystems, Inc. in the United States and other countries. Canon, IMAGERUNNER, and Canon Know How are registered trademarks of Canon Inc. in the United States and may also be registered trademarks in other countries. IMAGEANYWARE is a service mark of Canon U.S.A., Inc. in the United States.

All specifications are subject to change without notice.

