

# Canon



**CORPORATE SOLUTIONS**



**imageRUNNER®**  
4570 / 3570

**meap**  
POWERED BY

## CORPORATE SOLUTIONS

### EXPERIENCE A BREAKTHROUGH IN MULTIFUNCTION TECHNOLOGY

The Canon imageRUNNER® 4570 and imageRUNNER 3570 are multifunction devices that allow you to achieve maximum control over office workflow and costs.



**imageRUNNER®**  
4 5 7 0 / 3 5 7 0

Your growing business can no longer conform to the rigid workflow processes forced upon it by yesterday's office technology. You need an office solution that can be shaped around your specific needs. Now you can have it with the Canon imageRUNNER 4570/3570 devices.

Designed for the tightest possible integration with your environment, these Canon imageRUNNER devices deliver unmatched performance, reliability, and innovation. Featuring Canon MEAP® (Multifunctional Embedded Application Platform) technology, every user will be empowered with more effective management of paper- and electronic-based information.

The imageRUNNER 4570/3570 systems provide greater security measures for your online information sharing and storage needs, plus a host of value-added functions that will make these devices the centerpiece of your office communications.

## MAXIMUM PRODUCTIVITY FROM START TO FINISH

Representing a symbol of innovative technology, quality, and reliability.

The imageRUNNER 4570/3570 devices offer all the functionality you'll ever need in a multifunction machine. Powered by Canon's imagePlatform architecture, these models are designed to drive exceptional performance with true concurrent processing across all functions—including copying, printing, scanning, sending, and faxing.

At the heart of the system is a high-quality, digital laser copier/printer engine that delivers output speeds of up to 45 and 35 pages per minute (letter), respectively, to keep pace with daily business tasks. Supporting output resolutions of up to 2400 x 600-equivalent dpi, the imageRUNNER 4570/3570 devices ensure that every document always looks its best.

Ideal for medium-sized businesses and workgroups alike, the imageRUNNER 4570/3570 models offer a number of energy- and time-saving features to help reduce costs and meet those important deadlines. And, with innovative hardware and system accessories, you can configure a system to suit your specific needs. For all configurations, an easy-to-use, full-color touch-screen interface provides quick, intuitive operation of all device functions.

### Duplexing Automatic Document Feeder



Handles multipage, double-sided originals effortlessly.

### Expandable Paper Supply



Boosts the system's online paper capacity for uninterrupted productivity.

### Internal Finisher



Provides neatly stapled and hole-punched (optional) output within the original device footprint.

### Saddle Finisher



Creates professional-looking booklets in-house.



Full-Color LCD Panel

## DUPLICATE DOCUMENTS, NOT EFFORT

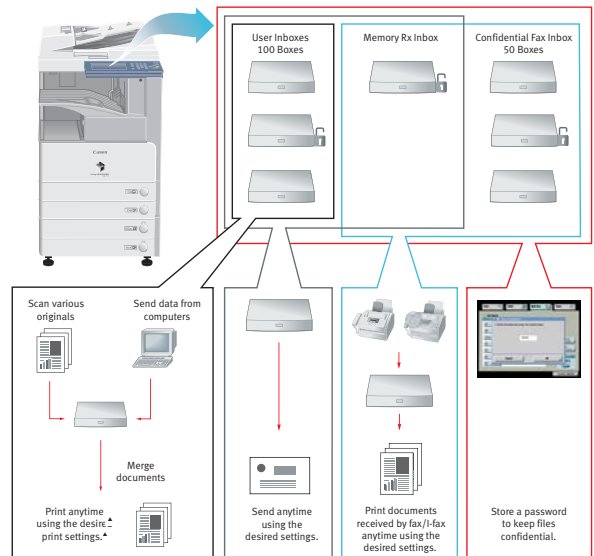
Versatile, productive copy and storage features put document control in the hands of every end-user.

### ADVANCED HARD-COPY REPRODUCTION AND STORAGE

The imageRUNNER 4570/3570 devices are equipped with powerful Canon image processing technology and an extensive memory capacity to maximize system performance. Each system has 512MB RAM, a 20GB Hard Disk Drive, and supports a number of advanced document reproduction and storage features that enhance workflow.

Now you can take advantage of device document manipulation features for accurate reproduction or modification of hard-copy images. Add digital data to copy sets to utilize complete document control and generate creative output. Plus, advanced document creation modes allow for covers, chapters, and inserts—even the ability to use several paper types in the same job.

### Mail Box Functionality

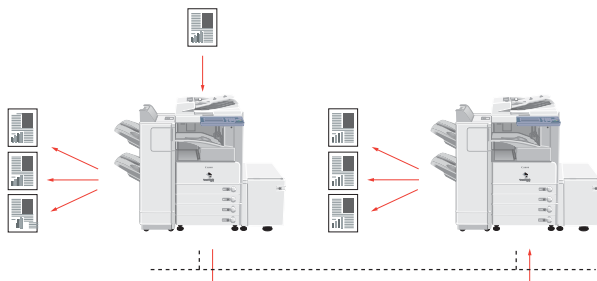


▲ Some functions are not available when printing documents that are sent from a computer.

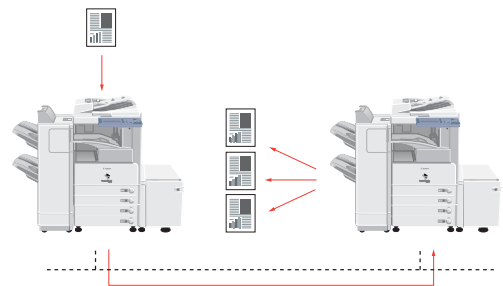
The imageRUNNER 4570/3570 models support value-added Mail Box functions that may serve as your centralized system for information-sharing, on-site document storage, and print-on-demand applications.

### Cascade and Remote Copy

Cascade Copy



Remote Copy



Double system productivity, and enable printing directly to the point-of-need, by leveraging the power of other imageRUNNER 4570/3570 devices installed on the network.

## EFFICIENT COMMUNICATIONS AT NETWORK SPEED

Incorporate innovative document distribution capabilities and transform the way your office communicates.

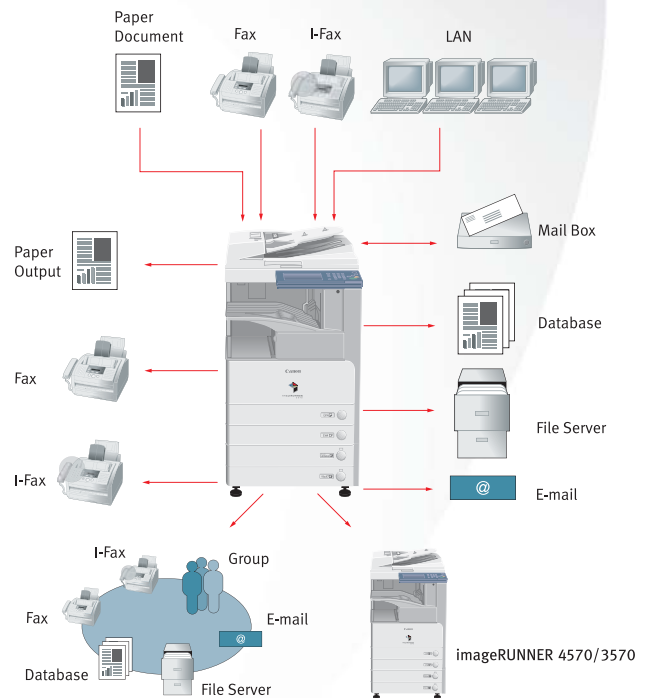
### REMOVE THE BARRIERS TO EFFICIENT INFORMATION SHARING

Add the optional Universal Send™ Kit and push digital documents to any network destination—individual or group e-mail addresses or Internet faxes, local Mail Boxes, network folders, and document management systems—in one simple, cost- and time-saving operation. Users may select from several industry-standard file formats, take advantage of Searchable PDF mode,\*† Encrypted PDF,\*† and URL Send mode, and choose destinations from the system's high-capacity Address Book. With LDAP support, larger organizations can search up to five corporate e-mail servers for accurate, authorized recipient selection without error.

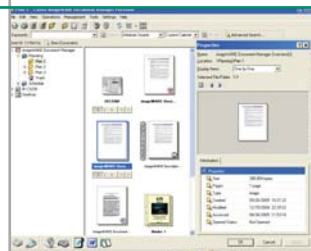
The imageRUNNER 4570/3570 devices support standard TWAIN-compliant scanning for basic image capturing needs through the Canon Network ScanGear utility, as well as traditional faxing through one or two optional dedicated fax lines—even PC faxing right from the desktop. Through job forwarding features, the system can route all of your incoming communications to other destinations, ensuring that you're never out of reach of important information.†

With imageWARE™ Document Manager Personal,‡ you can extend your imageRUNNER device's document distribution capabilities to your own desktop. imageWARE Document Manager Personal has been designed to enable effective management of your critical business documents. With this easy-to-use, yet powerful solution, you can archive, edit, retrieve, and distribute scanned documents and electronic files more efficiently.

### Document Distribution Modes



Universal Send Main Menu



imageWARE Document Manager Personal

\* Available with optional Universal Send PDF Enhancement Kit.

† Requires optional Universal Send Kit.

‡ A 5-user license of the user-installable imageWARE Document Manager Personal software ships standard with the imageRUNNER 4570/3570 devices.



## FREE REIGN FOR ALL ON YOUR NETWORK

Unleash the true power of your imageRUNNER 4570/3570 devices for exceptional print performance.

### EASY INTEGRATION INTO EXISTING INFRASTRUCTURES

Compatible with most of today's popular operating systems, the imageRUNNER 4570/3570 systems are at home in any network environment. The standard 10/100Base-TX Ethernet interface supports the fastest possible data transfer speeds in shared environments or, for expanded versatility, use the USB 2.0 High-Speed Interface for direct connection to a host PC.

### WHEN YOU NEED SOMETHING TO HOLD ON TO

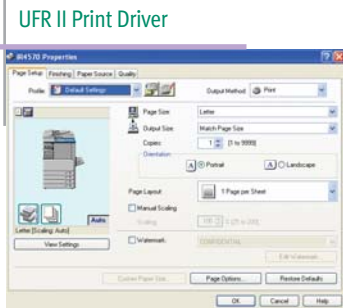
When you choose to connect your imageRUNNER device as a network printer, rest assured that Canon has all the bases covered. Install the Canon Multi-PDL Printer Kit-E1 and watch employee productivity soar. With support for PostScript® 3™ Emulation and PCL 5e/6 page description languages, the imageRUNNER 4570/3570 devices are perfectly suited for general office printing applications with superior image quality. For accelerated printing performance, leverage Canon proprietary UFR II (Ultra Fast Rendering) technology, which processes print files with incredible speed.

### VALUE-ADDED PRINTING FUNCTIONALITY

The imageRUNNER 4570/3570 devices go even further to support several additional value-added printing capabilities. There's a Secured Print function for document confidentiality, support for integration with imageWARE Publishing Manager (optional) for drag-and-drop document building, and optional barcode printing† for quick and accurate production of barcodes. The system also offers the industry's first-ever Web Access function. This option allows users to call up Internet or intranet data on the full-size user interface panel for information retrieval as well as print† forms and documents—without the use of a PC.



Web Access



UFR II Print Driver

†Requires Multi-PDL Printer Kit-E1.

## YOUR BUSINESS IS UNIQUE. WHY NOT YOUR OFFICE EQUIPMENT?

Install, manage, and customize the imageRUNNER 4570/3570 system operation and functionality to match your specific needs.

### NOW YOU'RE IN COMPLETE CONTROL

Don't let networked devices dictate how your business operates. Canon offers all the tools you need to simplify imageRUNNER 4570/3570 configurations, administration, access, and customization—regardless if you're supporting a single unit or a fleet of networked MFPs.

Canon offers device management utilities either as part of the standard feature-set or as optional upgrades. Authentication features, such as Department ID Mode, provide the ability to track or limit access to the device to those users assigned valid IDs and passwords. Simple Device Login (SDL) and Single Sign-on (SSO) features allow users to enter existing personal IDs and passwords to gain system access.

Once access is granted, a number of advanced security features go to work to help prevent data from being compromised or intercepted by outsiders. For even greater protection, the imageRUNNER Security Kit initiates the overwriting of hard disks and completely erases stored data.

In a networked environment, an administrator can control services and protocols as well as port usage. This person can also specify which users have access to the device using Mac and IP address filters.

### ACCESS FOR EVERYONE, ANYWHERE, ANYTIME

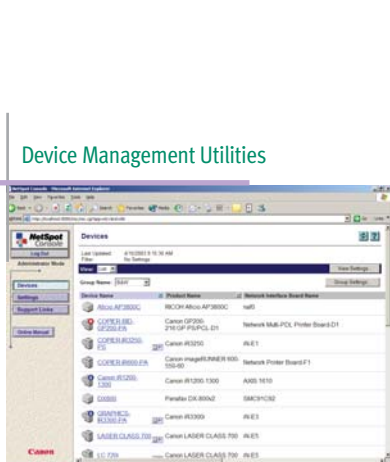
The imageRUNNER 4570/3570 devices go further to provide access to every authorized user. Disabled users can operate system functions from a laptop or desktop PC using the Remote Operator's Software Kit, as well as receive audible job confirmation through the optional Voice Guidance Kit.

### TAILOR YOUR SYSTEM TO THE WAY YOU WORK

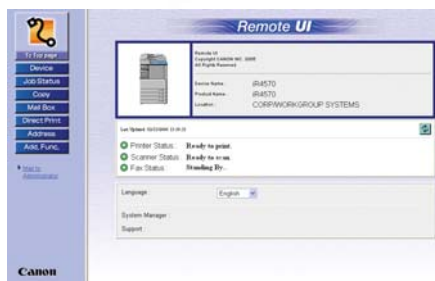
With Canon Java-based MEAP (Multifunctional Embedded Application Platform) architecture, the system can incorporate unique applications that run embedded in the device. The result is total integration of the imageRUNNER 4570/3570 devices into your business infrastructure.

### IMAGE OF A LEADER

As a leading producer of network-connected multifunction devices, Canon continues to set new standards for quality, performance, and reliability. That's why you can trust Canon to provide you with solutions to make your corporate workgroup more productive, and any business more competitive.



Device Management Utilities



Remote UI

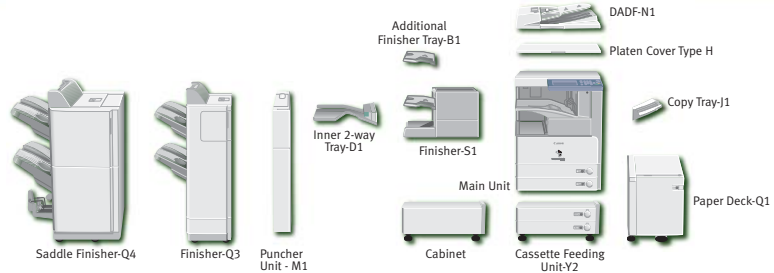
# SPECIFICATIONS

## MAIN UNIT

**Type:** Monochrome Digital, Multifunction Imaging System  
**Imaging System:** Laser Dry Electrostatic Transfer  
**Developing System:** Dry Dual Component Developing System  
**Fixing System:** RAPID Fusing System™  
**Image Server Memory:** Standard 512MB RAM/20GB HDD  
**First-Copy Time:** 3.9 Seconds from Platen Glass  
 5.9 Seconds from Feeder  
**Warm-Up Time:** 10 Seconds or Less from Sleep Mode  
 30 Seconds from Main Power Off  
 Up to 45/35 ppm (Letter)  
**Copy/Print Speed:** 100  
**Max. Mail Boxes Supported:** 5 Jobs  
**Max. Copy Reservation:** 600 dpi x 600 dpi  
**Actual Resolution:** 2400 dpi x 600 dpi (Print)  
**Interpolated Resolution:** 256 Gradations of Gray  
**Halftone:** Standard Automatic Trayless Duplexing  
**Duplexing:** Duplexing  
**Magnification Reduction/Enlargement:** 25% to 400% — Platen  
 25% to 200% — Feeder  
 (in 1% increments)  
**Exposure Control:** Automatic or Manual (9 Levels)  
**Paper Sources Standard:** Dual 550-sheet Paper Cassettes (1,100 Sheets)  
 Stack Bypass (50 Sheets)  
**Optional:** 2,500-sheet Paper Deck (20 lb. Bond)  
 Dual 550-sheet Cassette Feeding Unit (4,750 Sheets Max.)  
**Multiple Copies:** 1 to 999  
**Paper Weights:** 17 lb. to 20 lb. Bond (Cassette)  
 17 lb. to 32 lb. Bond (Stack Bypass)  
**Network Interface Connections:** 10/100Base-TX (RJ-45)  
**Dimensions (H x W x D):** 29-7/8" x 22-1/4" x 27-5/8"  
 (761mm x 565mm x 700mm)  
**Installation Space: (W x D):** 34" x 27-5/8"  
**Weight:** 136 lb. (61.6kg)  
**Power Requirements:** 120V AC, 60Hz, 10A  
**Power Consumption:** 1.35kW (Max.)  
**Toner Yield:** 24,000 @ 6% Coverage

## OPTIONAL ACCESSORIES

**Universal Send Kit-B1**  
**Sending Methods:** E-mail, I-fax, Super G3 Fax (Optional), User Inbox, File Server (IPX, FTP, SMB)  
**Max. 1,800 Destinations**  
**Address Book Capacity:** Max. 5 LDAP Servers  
**File Format:** TIFF, PDF, Optional PDF (OCR)  
**Sending Sizes:** Statement to 11" x 17"  
**Duplexing Automatic Document Feeder-N1**  
**Acceptable Originals:** Statement to 11" x 17"  
**Capacity:** 50 Sheets (20 lb. Bond/Letter)  
**Max. Paper Weight:** 13 lb. to 32 lb. Bond  
**Cassette Feeding Unit-Y2**  
**Paper Capacity:** Dual 550-sheet Paper Cassettes (1,100 Sheets/20 lb. Bond)  
**Acceptable Paper Sizes:** Statement-R to 11" x 17"  
**Acceptable Paper Weights:** 17 lb. to 20 lb. Bond



<p><b>Paper Deck-Q1</b>  <b>Paper Deck Capacity:</b> 2,500 Sheets (20 lb. Bond)  <b>Paper Size:</b> Letter  <b>Acceptable Paper Weights:</b> 17 lb. to 20 lb. Bond</p> <p><b>Inner 2-Way Tray-D1</b>  <b>Number of Trays:</b> Two  <b>Tray Capacity:</b>      Lower Output Tray: 250 Sheets (Letter)      100 Sheets (Other Sizes)      Upper Output Tray: 100 Sheets (Letter)      50 Sheets (Other Sizes)      150 Sheets (Letter)  <b>Copy Tray-J1 (Optional):</b> Statement to 11" x 17"  <b>Acceptable Paper Sizes:</b> Copy Tray-J1  <b>Attachable Accessories:</b></p> <p><b>Finisher-S1</b>  <b>Number of Trays:</b> One (Second Tray Optional)  <b>Tray Capacity:</b>      Non-Collate, Collate, Group Mode: 1,000 Sheets (Letter, Statement)      Staple Mode: 1,000 Sheets/30 Sets  <b>Tray Capacity (with Additional Finisher Tray-B1):</b>      Non-Collate, Collate, Group Mode: 300 Sheets per Tray (Letter, Statement)      300 Sheets/30 Sets per Tray (Letter)      Staple Mode: 150 Sheets/30 Sets (Legal, 11" x 17")      Corner Stapling (11" x 17", Legal, Letter, Letter-R)  <b>Max. Stapling Capacity (Up to 20 lb. Bond):</b> 50 Sheets (Letter)  <b>Attachable Accessories:</b> Additional Finisher Tray-B1      Copy Tray-J1</p> <p><b>Finisher-Q3/Saddle Finisher-Q4</b>  <b>Number of Trays:</b> Two  <b>Tray Capacity:</b>      Non-Collate, Collate, and Group Mode: 1,000 Sheets (Letter, Statement)      500 Sheets (11" x 17", Legal, Letter-R)      1,000 Sheets/30 Sets (Letter)      500 Sheets/30 Sets (11" x 17", Legal, Letter-R)  <b>Max. Stapling Capacity Corner, Double:</b> 50 Sheets (Letter), 30 Sheets (Letter-R, Legal, 11" x 17")</p>	<p><b>Saddle-Stitching (Available on Saddle Finisher-Q4 Only)</b>  <b>Acceptable Paper Sizes:</b> Letter-R, Legal, 11" x 17"  <b>Capacity/Tray:</b> 1 to 5 Sheets/25 Sets      6 to 10 Sheets/15 Sets      11 to 15 Sheets/10 Sets  <b>Max. Stapling Capacity/Set:</b> 15 Sheets  <b>Folding:</b> V-fold  <b>Attachable Accessories:</b> Puncher Unit-M1</p> <p><b>Super G3 Fax Board-Q1/G3 Multi-Line Fax Board-D1</b>  <b>Applicable Line:</b> Public Switched Telephone Network (PSTN)  <b>Connection Lines:</b>      Super G3 Fax Board-Q1: One      Super G3 Multi-Line Fax Board-D1: Two  <b>Sending/Original Sizes:</b> Statement to 11" x 17" (from Document Feeder)      Statement to 11" x 17"  <b>Recording/Printing Sizes:</b> Statement to 11" x 17"</p> <p><b>Multi-PDL Printer Kit-E1</b>  <b>Processor:</b> Canon Custom Processor—Shared  <b>RAM:</b> 512MB—Shared  <b>Hard Disk:</b> 20GB—Shared  <b>PDL Support:</b> PCL 5e, PCL 6, PostScript 3 Emulation, UFR II  <b>Interface Connections Standard:</b> RJ-45 (10/100Base-TX)      USB 2.0 High-Speed  <b>Network OS:</b> Windows® 98/Me/2000/XP      Windows NT® 4.0/Server 2003      Macintosh® OS 8.0 or Later (PPD)      Solaris® 1.1x, 2.5x or Later      Novell® NetWare® v3.2, 4.1, 4.11, 4.2, 5, 5.1, 6, 6.5 (IPX/SPX™)</p> <p><b>Additional Optional Accessories and Utilities</b>      Platen Cover Type H: Universal Send PDF Enhancement Kit-B1      Puncher Unit-R1-M1: imageRUNNER Security Kit-A2/B2      Cabinet: eCopy Suite/ShareScan OP      Envelope Feeder Attachment-C1: imageWARE Suite      Accessibility Handle-A1: Copy Tray-J1      Braille Label Kit-A1: Bar Code Printing Kit-A1      Document Tray-J1: Web Access Software-A1      Card Reader-C1: Voice Guidance Kit-A2      Card Sets: Remote Operator's Software Kit-A1      Removable HDD Kit</p>
---	---

**Canon**  
image*ANYWARE*

As an ENERGY STAR® Partner, Canon U.S.A., Inc. has determined that these products meet the ENERGY STAR guidelines for energy efficiency. ENERGY STAR and the ENERGY STAR mark are registered U.S. marks. eCopy ShareScan is a trademark of eCopy, Inc. PostScript is a registered trademark of Adobe Systems Incorporated in the United States and/or other countries. Windows and Windows NT are registered trademarks of Microsoft Corporation in the United States and/or other countries. Macintosh is a registered trademark of Apple Computer, Inc. Solaris is a trademark of Sun Microsystems, Inc. in the United States and other countries. Novell and NetWare are registered trademarks of Novell, Inc. in the United States and other countries. IPX/SPX is a trademark of Novell, Inc. CANON, IMAGERUNNER, and MEAP are registered trademarks, and UNIVERSAL SEND, RAPID FUSING SYSTEM, and the GENUINE logo are trademarks of Canon Inc. in the United States and may also be registered trademarks or trademarks in other countries. REMOTE UI is a trademark of Canon U.S.A., Inc. IMAGEWARE is a registered trademark of Canon U.S.A., Inc. in the United States and is a trademark of Canon, Inc. in certain other countries. IMAGEANYWARE is a trademark of Canon. All referenced product names and other marks are trademarks of their respective owners. Specifications subject to change without notice. ©2006 Canon U.S.A., Inc. All rights reserved. Some products shown with optional accessories and equipment.

1-800-OK-CANON  
www.usa.canon.com

Canon U.S.A., Inc.  
One Canon Plaza  
Lake Success, NY 11042

0060W360  
0406-4570/3570-60M-PCR

PRINTED ON RECYCLED  
PAPER IN THE U.S.A.

