

Canon



PRODUCTION SOLUTIONS



meap
POWERED BY I



imageRUNNER®
7105 / 7095 / 7086

PRODUCTION SOLUTIONS

CHALLENGE YOUR DOCUMENT PRODUCTION STANDARDS

New-generation, high-speed imageRUNNER® technology meets the rigors of high-volume offices and production environments with unmatched versatility.



imageRUNNER®
7105 / 7095 / 7086

Designed to support enterprise-class environments demanding the utmost in productivity and durability, the imageRUNNER 7105/7095/7086 devices provide versatility in both functionality and hardware configuration.

The imageRUNNER 7105/7095 are perfectly suited for central reproduction departments, print-for-pay establishments, print-on-demand applications, and large corporate offices where rapid document capture and production are required. The imageRUNNER 7086 offers the speed and versatility to serve as a complete document publishing and communications hub device for busy corporate departments. And best of all, each model is Internet-ready, so you can be assured of the tightest possible integration and device control across your entire corporate network.

CHALLENGE YOUR DOCUMENT PRODUCTION CAPABILITIES

The imageRUNNER 7105, imageRUNNER 7095, and imageRUNNER 7086 devices will redefine your expectations for total in-house black-and-white document production.

PRODUCTIVITY

While their output speeds are impressive, it's what Canon has done to each system's internal design that's truly inspiring. Every model features dual Canon custom processor technology to handle sophisticated applications with incredible speed. With available support for actual 1200 x 1200 dpi* print resolution and Canon's exclusive Fine Character and Edge Technology (FCET), you can count on outstanding image quality on every page.



Color LCD panel

Job programming is a breeze, thanks to an oversized color LCD user interface panel that clearly displays available modes and functions. From the desktop, intuitively designed drivers and utilities guide connected users through jobs with point-and-click simplicity.



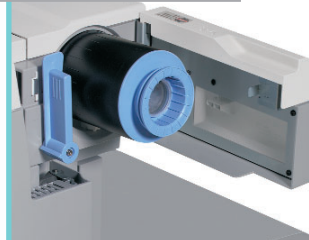
A sturdy engine design provides maximum durability

RELIABILITY

Each imageRUNNER 7105/7095/7086 device is infused with the strength and power needed to withstand the daily punishment of production environments. A sturdy, reinforced frame offers rock-solid stability, while multifeed detection technology stands guard against double-feeds and lost productivity. These improvements, along with high-durability parts and components, add up to superior reliability for environments producing huge volumes of pages every month.

DURABILITY

Set new expectations for uptime and maintenance requirements. A high-capacity toner bottle design provides quick and clean replacement and can be changed while the machine is running for non-stop productivity. And with a long-lasting 6,000,000-impression Amorphous-Silicon (A-Si) drum, the imageRUNNER 7105/7095/7086 devices deliver low operating costs and less downtime.



"Set-On" Toner Bottle



A-Si Drum

* Available when printing with Canon UFR II and PostScript 3 page description languages.

CHALLENGE YOUR SYSTEM VERSATILITY EXPECTATIONS

The Finisher-V1 or Saddle Finisher-V2 provides the collating, stapling, saddle-stitching and optional punching flexibility required for busy production environments.

Install the Document Insertion Unit-C1 on top of the Finisher Units to feed booklet covers into job streams.

Add the Perfect Binder-A1* to produce perfectly bound and trimmed books with wraparound covers.

The Professional Puncher-A1* offers a number of optional hole-punch tools to ready documents for advanced binding applications.

Attach the Booklet Trimmer-B1[▲] to the Saddle Finisher-V2 to trim the open end of booklets.

The Paper Folding Unit-D1 Z-folds 11" x 17" pages into document sets with a finished 8-1/2" x 11" size.

** The Professional Puncher-A1 cannot be installed simultaneously with the Perfect Binder-A1 and/or Puncher-V1.*

▲ Check with your local Authorized Canon Dealer for availability.

Note: Some accessories require additional equipment or may be prerequisites for other options.

Check with your local Authorized Canon Dealer for details.

The imageRUNNER 7095 shown with optional accessories.

The imageRUNNER 7105, imageRUNNER 7095, and imageRUNNER 7086 devices are modular, allowing you to mix and match the paper supply and advanced finishing accessories you need to meet your diverse publishing requirements and drive productivity to new levels.

The High-Capacity Stacker-A1⁺ stacks up to 6,000 sheets for long periods of unattended operation. Includes removable dolly.

The standard Duplexing Automatic Document Feeder makes quick work of complex originals.

Add the Paper Deck-W1 or Paper Deck-X1 to raise system paper capacity to a maximum of 7,650 sheets.



Perfect-Bound Booklets



Professional Punching



Tab Inserts

Z-Folding



Saddle-Stitched Booklet



Stapled Output

CHALLENGE YOUR DOCUMENT WORKFLOW STANDARDS

Multitask, reduce costs, speed job turnaround, get more done every day—that's what high-volume productivity is all about.

BOOST YOUR EFFICIENCY

The imageRUNNER 7105/7095/7086 devices offer a host of document reproduction and storage features to ensure that every job is produced on time, every time.

Use the Job Block Combination function to scan multiple batches of originals with different settings to produce complex documents with little manual intervention. Then check the integrity of scanned pages before committing to a lengthy run with enhanced Sample Set features. Cascade and Remote Copy features let you double productivity to reduce job completion time and direct output to the point-of-need. Offset-stack document sets in groups to speed preparation for off-line finishing or packaging. Each imageRUNNER device offers a Mail Box function, allowing the system to deliver added value as an on-site document library—a great solution for reprinting forms and static documents.



Express Copy

COMMUNICATE WITH EASE

Equip your imageRUNNER device with the optional Universal Send™ Kit-E1 to send scanned documents to individual or group e-mail addresses, Internet faxes, network folders, and document management systems—in any combination. Ensure the integrity and privacy of scanned data by using the PDF Encryption* feature to send confidential files that only intended recipients can access. Increase workflow efficiencies by creating Searchable PDF files* for fast document retrieval.



Send

RETRIEVE INFORMATION ANYTIME

Transform your imageRUNNER system into an on-site information retrieval kiosk with the optional Web Access function. Navigate Internet or intranet pages right from the color LCD panel to locate and output desired forms or documents, without the need for a PC.



Web Access

* Requires the Universal Send PDF Enhancement Kit-C1.

CHALLENGE YOUR NETWORK PRINTING STANDARDS

Powerful connectivity solutions for every production environment, application, and budget.

FLEXIBLE CONTROLLER OPTIONS

Canon offers a choice of print controller solutions to keep pace with demanding departments and page-churning production environments. There's an embedded print controller option that provides support for PCL 5e, PCL 6, and PostScript® 3™ emulation, plus Canon's proprietary UFR II (Ultra Fast Rendering) technology for exceptional printing performance in both Windows® and Macintosh® networks. And there's the optional imagePASS-S1 external print controller, which adds support for genuine Adobe® PostScript 3 along with PCL 5e/6, plus access to advanced options such as Hot Folders, Command Workstation®, FreeForm™, and EFI Impose to manage complex workflows.

imagePASS-S1



PUBLISH PROFESSIONAL-LOOKING DOCUMENTS

Build complex documents in a simple drag-and-drop environment with Canon's powerful imageWARE™ Publishing Manager software. This optional desktop publishing utility simplifies the production of professional-looking documents containing various inserts or chapters from multiple files. Merge, edit, or reassemble content from several sources such as manuals, presentations, brochures, proposals, and catalogs into a single, cohesive document—even combine documents created in different applications.

Canon provides all the tools you need for a complete, easy-to-use, in-house document production system!

DOCUMENT MAKE-READY TOOLS



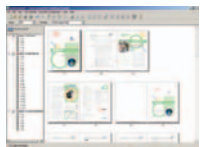
Special Copy Features

Job Block Combination:
Combine different settings in one job



Web Access

Information retrieval from Internet and/or intranet



imageWARE Publishing Manager

Build dynamic documents using drag-and-drop functionality



Print Driver

Page Layout, Finishing, Paper Source, and quality settings

User Inboxes



JOB SUBMISSION

DOCUMENT STORAGE

Professional-Level Finishing



ADVANCED IN-LINE FINISHING OPTIONS

PRINT

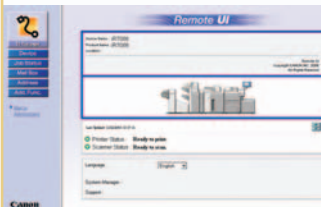
- High Image Quality
- Fast Processing
- High-Speed Output

CHALLENGE YOUR DEVICE MANAGEMENT STANDARDS

Your need to address device management, system monitoring, and data security can now be met.

SIMPLIFY INSTALLATION AND INTEGRATION

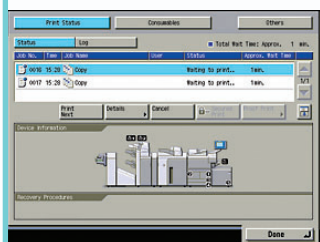
Through a comprehensive suite of Canon-supplied software utilities, the Canon imageRUNNER 7105/7095/7086 devices answer the call for solutions that are easy to install, can seamlessly integrate with existing network management applications, and allow for monitoring and device control from anywhere on the network. With Remote UI™ (User Interface), end-users can check device status and configuration before initiating a job for more informed printing decisions. Administrators will appreciate the system's device information delivery function that broadcasts the desired settings from a target machine to other networked imageRUNNER devices for consistent operability.



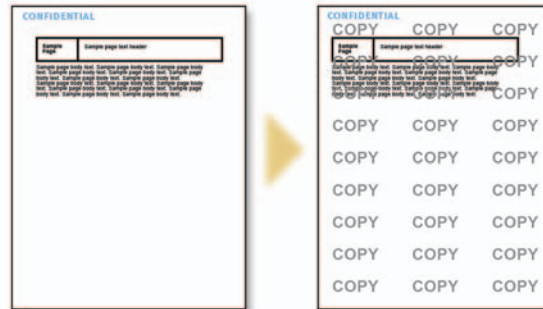
Remote UI Screen

ACHIEVE TOTAL CONTROL

At the device, one-touch access to complete machine status is accomplished through the System Monitor function, while inside the machine a number of network-enabled user authentication tools, such as Simple Device Login (SDL) and Single Sign-on (SSO), help ensure that only authorized users have access to the device and data stored in memory. For even greater protection, the optional imageRUNNER Security Kit-A2 enables the encryption of data stored on the hard disk and can initiate three overwriting methods to completely erase information.



System Monitor



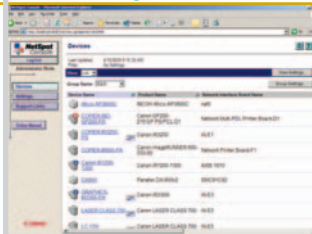
Original document with embedded text

Embedded text appears on copies that are made*

SECURE WATERMARK

Regain control over hard-copy document distribution and versioning with the optional Secure Watermark function. This feature assists in protecting information through the inconspicuous embedding of coded information in documents. The embedded watermark becomes clearly visible only when the document is copied and deters users from reproducing sensitive or confidential documents.

Device Management Utilities



* For illustrative purposes only.

CHALLENGE THE CONVENTIONAL

Innovative device customization and accessibility technologies to empower everyone on your team.

MEET UNIQUE WORKFLOWS

Based on Java technology, Canon MEAP® (Multifunctional Embedded Application Platform) architecture allows the system to incorporate unique applications that run embedded within the device. The result is total integration into your company's infrastructure by presenting customized applications to walk-up users directly from the imageRUNNER 7105/7095/7086 systems' color LCD panel.

EQUAL ACCESS FOR ALL

The imageRUNNER 7105/7095/7086 devices go even further to provide easy system access to every authorized user. Disabled employees can operate system functions from a laptop or desktop PC using the Remote Operator's Software Kit that emulates the control panel; visually impaired users can receive audible job confirmation through the optional Voice Guidance Kit.

IMAGE OF A LEADER

As a leading producer of network-connected multifunction devices, Canon continues to set new standards for quality, performance, and reliability. That's why businesses of every size and scope trust Canon to provide industry-leading solutions that enhance productivity and make every business more productive.



Voice Guidance Kit



MEAP Application: Virtual Mailbox*



MEAP Application: eCopy Share Scan™



MEAP Application: imageWARE Document Manager Client for MEAP

* Check with your local Authorized Canon dealer for availability.

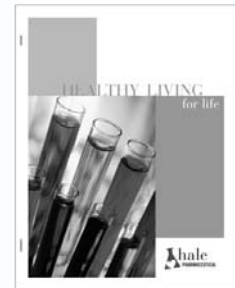
MEETING THE CHALLENGES OF EVERY HIGH-VOLUME ENVIRONMENT

From classroom to courtroom, Canon production imageRUNNER devices are hard at work behind the scenes in environments like these to help businesses meet their high-volume production needs.



HEALTHCARE

Advanced user authentication and data security measures assist healthcare professionals with HIPAA patient information privacy compliance issues. Records scanning as well as the printing of forms, information pamphlets, and bound manuals are key applications met by imageRUNNER production devices in the healthcare industry.



Stapled Output



FINANCIAL SERVICES

Banks, brokerage firms, wealth management advisors, and corporate finance departments are all seeking ways to reduce costs while keeping pace with ever-changing government regulations and compliance legislation. The answer is short-run digital printing of loan and tax forms, prospectuses, stockholder reports, transaction billing, and other short-lived documents to minimize waste with imageRUNNER device print-on-demand capabilities.

Custom Forms





EDUCATION

From public school districts to private universities, educational institutions generate millions of pages each semester for classroom handouts, course syllabi, exams, and more. Production-class imageRUNNER devices keep campus print centers moving with high-capacity paper supplies, advanced finishing, and fast document scanning.



Z-Folding



MANUFACTURING

Most major manufacturers operate in-plant facilities to promote the fast turnaround and confidentiality of internal documents. The quick and accurate preparation of engineering designs, bid specifications, user and service manuals, sales guides, and training workbooks represent just a few ways in which production-level imageRUNNER devices help manufacturers meet their document production needs.



Three-Hole Punching



LEGAL

Perhaps the most paper-intensive environment of all, Canon imageRUNNER production systems help law firms, corporate legal departments, and law-related government agencies manage mountains of paperwork generated by new legislation, ongoing legal actions, contracts, briefs, and affidavits. Advanced data security and job monitoring are supported by imageRUNNER software utilities to protect sensitive information.



Perfect-Bound Booklet



CORPORATE OFFICE

When installed as a shared resource for dozens of walk-up and connected users in large corporate departments, ease-of-use and accessibility are critical. Simple to operate and maintain, imageRUNNER production systems help authorized users produce the large volumes of everyday collateral materials such as brochures, sales reports, conference and trade show booklets, employee handbooks, client presentations, and more.

SPECIFICATIONS

Main Unit

Type:	Digital Multifunctional Imaging System
Imaging System:	Laser Dry Electrostatic Transfer
Developing System:	Dry Monocomponent Toner Projection
Main Unit CPU:	Dual Canon Custom Processors
Interface Connection:	10/100Base-T (RJ-45), USB 2.0 High Speed
Image Server Memory:	Standard 1GB RAM + 40GB HDD
Max. Mail Boxes Supported:	100 (Max. Page Capacity: Approximately 20,000 pages)
Max. Copy Reservation:	20 Jobs
Acceptable Originals:	Sheets, Books, 3-Dimensional Objects up to 4.4 lb.
Max. Original Size:	11" x 17"
Max. Copy Size:	11" x 17"
Min. Copy Size:	3-15/16" x 5-7/8" (Stack Bypass)
Scanning Resolution:	600 x 600 dpi
Copy Resolution:	1200 x 600 dpi (Interpolated)
Halftone:	256-Level Grayscale
Exposure Control:	Automatic or Manual (Text, Photo, or Text/Photo)
Copy Speed	
7105:	105 cpm (Letter) 53 cpm (11" x 17")
7095:	95 cpm (Letter) 49 cpm (11" x 17")
7086:	86 cpm (Letter) 43 cpm (11" x 17")
First-Copy Time	
7105/7095:	2.8 Seconds (From Platen)
7086:	3.0 Seconds (From Platen)
Warm-Up Time:	6 Minutes or Less
Multiple Copies:	1 – 9,999
Duplexing:	Standard Automatic Trayless Duplexing
Magnification	
From Glass:	25% - 400% (In 1% increments)
From Feeder:	25% - 200% (In 1% increments)
Preset Reduction:	25%, 50%, 64%, 73%, 78%
Preset Enlargement:	121%, 129%, 200%, 400%
Standard Paper Supply:	Dual Front-Loading Drawers (1,500 Sheets Each) Dual Front-Loading Cassettes (550 Sheets Each) 50-Sheet Stack Bypass
Optional Paper Supply:	3,500-Sheet Paper Deck-W1/X1
Paper Capacity:	Standard: 4,150 Sheets Maximum: 7,650 Sheets
Acceptable Paper Weight:	17 lb. Bond to 110 lb. Index (All Sources)

Power Consumption	
7105/7095:	2.15kW
7086:	2kW
Plug:	NEMA 6-15R
Photoconductor Yield:	6 Million Impressions
Toner Yield:	47,000 Images @ 6% Coverage

Duplex Automatic Document Feeder (imageRUNNER 7105/7095)	
Tray Capacity:	100 Sheets
Scanning Speed:	85 Sheets Per Minute (Letter)
Acceptable Original Sizes:	Statement to 11" x 17"
Acceptable Size Originals:	Same Width
Acceptable Paper Weight:	13 lb. Bond to 80 lb. Cover

Duplex Automatic Document Feeder (imageRUNNER 7086)	
Tray Capacity:	100 Sheets
Scanning Speed:	65 Sheets Per Minute (Letter)
Acceptable Original Sizes:	Statement to 11" x 17"
Acceptable Size Originals:	Same Width, Different Width
Acceptable Paper Weight:	13 lb. to 32 lb. Bond

Optional Accessories

Paper Deck-W1/Paper Deck-X1	
Paper Capacity:	3,500 Sheets
Number of Drawers:	1
Acceptable Paper Weight:	17 lb. Bond to 110 lb. Index
Acceptable Paper Size	
Paper Deck-W1:	Letter
Paper Deck-X1:	Letter-R, Letter, Legal, 11" x 17"

High-Capacity Stacker-A1*	
Paper Capacity:	6,000 Sheets
Number of Trays:	2 (includes rolling Dolly for moving document stacks)
Tray Capacities	
Top Sample Tray:	1,000 Sheets
Stack Tray:	5,000 Sheets
Acceptable Paper Weight:	17 lb. Bond to 110 lb. Index
Acceptable Paper Size	
Top Sample Tray:	11" x 17", Legal, Letter, Letter-R, Statement-R, Executive
Stack Tray:	11" x 17", Legal, Letter, Letter-R, Executive

Finisher-V1/Saddle Finisher-V2	
Number of Trays:	2/3
Tray Capacity	
Top Tray:	3,000 Sheets
Lower Tray:	2,000 Sheets
Saddle-Stitch Tray:	30 Booklets or Limitless
Acceptable Paper Weight	
Finisher-V1:	17 lb. Bond to 110 lb. Index
Saddle Finisher-V2:	17 lb. Bond to 110 lb. Index
Acceptable Paper Size:	11" x 17", Legal, Letter, Letter-R, Statement-R, Executive
Staple Positions:	Corner Stapling, Double Stapling
Max. Stapling Capacity:	100 Sheets (Letter, Executive) 50 Sheets (11" x 17", Legal, Letter-R)
Type of Staple:	Staple-N1 (5,000 x 3)

Saddle-Stitching (Saddle Finisher-V2 Only)	
Acceptable Paper Size:	11" x 17", Legal, Letter-R
Folding Mode:	V-Folding Standard
Stapling Capacity:	20 Sheets (80 Pages)
Type of Staple:	Staple-P1 (5,000 x 2)
Professional Puncher-A1 (For Finisher-V1/Saddle Finisher-V2)	
Type:	External In-Line Punch Unit
Hole-Punching Method:	Press Punch Unit
Acceptable Punch Paper Weight:	20 lb. Bond to 80 lb. Cover
Acceptable Punch Paper Size:	Letter
Punch Speed:	Up to 105 ppm (Depending on speed of main unit)
Punch Patterns (Optional):	Plastic Comb (19-Hole) Twin Loop (32-Hole) Twin Loop (21-Hole) Color Coil (44-Hole) Velo Bind (11-Hole) Loose-leaf Bind (3-Hole) Proclick* (32-Hole)

Puncher Unit-V1 (For Finisher-V1/Saddle Finisher-V2)	
Type:	Internal Punch Unit
Hole-Punching Method:	Press Punch System
Acceptable Punch Paper Weight:	17 lb. Bond to 110 lb. Index
Acceptable Punch Paper Size	
Two Holes:	Legal, Letter-R
Three Holes:	11" x 17", Letter
Punch Speed:	Up to 105 ppm (Depending on speed of main unit)

Document Insertion Unit-C1 (For Finisher-V1/Saddle Finisher-V2)	
Number of Trays:	2
Capacity	
Upper Tray:	200 Sheets
Lower Tray:	200 Sheets
Acceptable Paper Weight:	17 lb. Bond to 158 lb. Index
Acceptable Paper Size	
Upper Tray:	Letter, Letter-R, Executive
Lower Tray:	11" x 17", Legal, Letter, Letter-R, Executive

Paper Folding Unit-D1 (For Finisher-V1/Saddle Finisher-V2)	
Folding Method:	Roller Pressure Folding
Folding Type:	Z-Fold
Acceptable Paper Weight:	17 lb. Bond to 20 lb. Bond
Acceptable Paper Size:	11" x 17"

Booklet Trimmer-B1* (For Saddle Finisher-V2)	
Margin Trimming:	Open-End Only
Trim Thickness:	40 Sheets
Waste Tray Capacity:	1,500 Sheets of Trimmed Strip
Acceptable Paper Weight:	17 lb. Bond to 110 lb. Index
Output Tray Capacity:	30 Booklets

Specifications are continued on back cover.

Connectivity Options

Universal Send Kit-E1

Sending Method: E-mail, I-fax, File Server (IPX, FTP, SMB), User Inbox

Address Book Capacity: 1,800 Destinations

File Format: Standard: TIFF, PDF
Optional: PDF (OCR)

Sending Size: Statement to 11" x 17"

Scan Density: 200/300/400/600 dpi

Canon Multi-PDL Printer Kit-H1

Processor: Dual Canon Custom Processors

Memory: 1 GB – Shared

Storage: 40 GB – Shared

PDL Support: PCL 5e, PCL 6, PostScript® 3 Emulation, UFR II

Resolution: 1200 x 1200 dpi: UFR II, PostScript 3 Emulation
2400 x 600 dpi: PCL 5e, PCL 6

Interface Connections
Standard: 10/100Base-TX (RJ-45), USB 2.0 High Speed

Network OS: Windows® 98/Me/2000/XP
Windows NT® 4.0
Windows Server 2003 (TCP/IP)
Solaris 1.1x, 2.5x or Later
Macintosh® OS 8.0 or Later (PPD)
Novell® NetWare® v3.2, 4.1, 4.11, 4.2, 5, 5.1, 6, 6.5 (IPX/SPX)

imagePASS-S1 Print Controller

Type: External Stand-Alone Controller

Processor: Intel® Celeron® D 2.8GHz

Memory: 256MB

Storage: 80GB HDD

PDL Support: Adobe® PostScript 3, PCL 5e, PCL 6

Resolution: 1200 x 1200 dpi: PostScript 3
2400 x 600 dpi: PCL 5e, PCL 6

Interface Connections: Standard: 10Base-T/100Base-TX/
1000Base-T (RJ-45)
(RJ-45), USB 2.0 High Speed

Network OS: Windows 98/Me/2000/XP
Windows Server 2003 (TCP/IP)
Solaris 8 or Later
Sun OS 4.1.3 or Later
Macintosh OS 9.2, OSX (10.2.4) or Later
Novell NetWare 4.2, 5.1, 6.5 (IPX/SPX)

Other Accessories

- Cassette-AB1
- Tab Feeding Attachment-A1
- Document Tray-L1
- Braille Label Kit-A1
- Control Card Reader-D1
- Control Card Sets
- Universal Send PDF Enhancement Kit-C1
- Web Access Software-C1
- Remote Operator's Software Kit-A1
- Security Expansion Board-F1
- Expansion Bus-D1
- imageRUNNER Security Kit-A2
- Voice Guidance Kit-A2
- Secure Watermark Kit-A1
- Barcode Printing Kit-A1
- Finisher Option Power Supply Unit-R1
- Stacker Dolly-A1
- Perfect Binder-A1*
- Punch Tools
- ADF Access Handle-A1
- Hot Folder for imagePASS-S1
- Impose for imagePASS-S1

* Check with your Authorized Canon Dealer for availability.

Device Dimensions and Power Requirements Chart

Product/Accessory Name	Dimensions (H x W x D)	Weight	Power
Main Unit	58" x 47-7/8" x 30-7/8" (1474mm x 1216mm x 783mm)	7105/7095: 617 lb. (280kg) 7086: 595 lb. (270kg)	208V, 60Hz, 12A
Paper Deck-W1	22-1/2" x 12-3/4" x 23" (570mm x 323mm x 583mm)	90.4 lb. (41kg)	Directly From Main Unit
Paper Deck-X1	22-5/8" x 23-3/8" x 24-1/2" (574.5mm x 593mm x 621mm)	101 lb. (46kg)	
High-Capacity Stacker-A1	50-4/5" x 33-9/10" x 30-1/5" (1290mm x 860mm x 765mm)	440 lb. (200kg)	120V, 10A
Perfect Binder-A1	53-1/2" x 36-1/5" x 30-4/5" (1360mm x 920mm x 783mm)	714 lb. (324kg)	208V, 15A
Finisher-V1	46-1/2" x 31-1/2" x 31-1/4" (1180mm x 800mm x 792mm)	278 lb. (126kg)	Directly From Main Unit* or 208V, 60Hz, 12A**
Saddle Finisher-V2	46-1/2" x 31-1/2" x 31-1/4" (1180mm x 800mm x 792mm)	392 lb. (178kg)	
Document Insertion Unit-C1	8-3/8" x 24-5/8" x 26-1/4" (213mm x 625mm x 667mm)	37.5 lb. (17kg)	From Finisher-V1 or Saddle Finisher-V2
Paper Folding Unit-D1	41" x 7-1/8" x 31" (1040mm x 179mm x 786mm)	97 lb. (44kg)	
Booklet Trimmer-B1	41" x 62-1/10" x 30-2/5" (1040mm x 1575mm x 770mm)	335 lb. (152kg)	
Professional Puncher-A1	38-1/2" x 12" x 28-1/2" (978mm x 305mm x 723mm)	154 lb. (70kg)	

* When Finisher is equipped with Paper Folding Unit-D1 and/or Document Insertion Unit-C1.

** When Finisher is equipped with Professional Puncher-A1, Booklet Trimmer-B1, High-Capacity Stacker-A1, and/or Perfect Binder-A1.

Canon
image*ANYWARE*

As an ENERGY STAR® Partner, Canon U.S.A., Inc. has determined that these products meet the ENERGY STAR guidelines for energy efficiency. ENERGY STAR and the ENERGY STAR mark are registered U.S. marks. Windows and Windows NT are registered trademarks of Microsoft Corporation in the United States and/or other countries. Adobe and PostScript are registered trademarks of Adobe Systems Incorporated in the United States and/or other countries. Macintosh is a registered trademark of Apple Computer, Inc. Intel and Celeron are registered trademarks of Intel Corporation. Novell and NetWare are registered trademarks of Novell, Inc. in the United States and other countries. Solaris and Sun are trademarks or registered trademarks of Sun Microsystems, Inc. in the United States and other countries. EFI and Command WorkStation are registered trademarks and FreeForm is a trademark of Electronics for Imaging, Inc. in the U.S. Patent and Trademark Office and certain other foreign jurisdictions. eCopy ShareScan is a trademark of eCopy, Inc. CANON, IMAGERUNNER and MEAP are registered trademarks, and UNIVERSAL SEND and the GENUINE logo are trademarks of Canon Inc. in the United States and may also be registered trademarks or trademarks in other countries. REMOTE UI is a trademark of Canon U.S.A., Inc. IMAGEWARE is a registered trademark of Canon U.S.A., Inc. in the United States and is a trademark of Canon Inc. in certain countries. IMAGEANYWARE is a trademark of Canon. All referenced product names and other marks are trademarks of their respective owners. Specifications subject to change without notice.
©2006 Canon U.S.A., Inc. All rights reserved.

1-800-OK-CANON
www.usa.canon.com

Canon U.S.A., Inc.
One Canon Plaza
Lake Success, NY 11042

