

# Canon



CORPORATE SOLUTIONS



imageRUNNER®  
C6870U / C5870U

meap  
POWERED BY

## CORPORATE SOLUTIONS

### COLOR MULTIFUNCTIONALITY FOR HIGH-VOLUME OFFICES

Introducing the color-enabled  
imageRUNNER® C6870U/C5870U devices—  
two powerful color digital solutions  
that occupy a place of power and prestige.

imageRUNNER®  
C 6 8 7 0 U / C 5 8 7 0 U

#### MAXIMIZE THE VALUE OF YOUR COLOR MFP

A true color multifunction system should make life simpler and less stressful. With many features designed to assist in everyday tasks—like finalizing a major project, accessing documents from the Web or device on demand, or just communicating with your peers across the globe—the imageRUNNER C6870U/C5870U devices set new standards for your business. These Canon devices are the latest to provide you with an absolute measure of confidence and security deemed necessary to help maintain that competitive edge.

Featuring Canon's next-generation Color imagePlatform controller and innovative MEAP® (Multifunctional Embedded Application Platform) technology, the imageRUNNER C6870U/C5870U solutions offer the added value of color to your usual black-and-white documents when you need it. Best of all, these solutions make it easy for you to take command with Internet-ready features, a complete suite of functionality, and advanced finishing capabilities to provide you with the in-house tools needed to create new standards of quality and productivity for all your important projects.

# PRINT/COPY IN BLACK AND WHITE OR IN FULL COLOR.

Canon lets you choose how you handle your color workflow requirements. For example, when you receive original color files you can opt to store them on an imageRUNNER C6870U/C5870U device. Then later, you can choose to either print these files in black and white or color for your review, distribute as color files via e-mail and fax, or both.

What a concept! Canon empowers you with the freedom to work and communicate in color—without boundaries. And the beauty of it all is that you're paying for color only when you need it.



**IT'S YOUR WORK. IT'S YOUR CHOICE.**

## A REAL SOLUTION FOR REAL PROBLEMS.

AS ASSERTIVE PERFORMERS, THE  
imageRUNNER C6870U/C5870U DEVICES CREATE  
NEW STANDARDS FOR THE COLOR DIGITAL EXPERIENCE.

### A SOLUTION FOR WHAT YOU NEED

Businesses require solutions that can adapt to their specific needs and processes—solutions that reflect the new ways in which content is created and shared today, electronically and in color. Canon answers that call with the imageRUNNER C6870U/C5870U devices. Not only do they provide efficient output speeds for both color and monochrome jobs, but they do so while delivering the horsepower you need to meet your most demanding color requirements.

The imageRUNNER C6870U/C5870U devices offer high-volume black-and-white letter-sized output at speeds of up to 68/58

pages per minute (ppm), respectively. Plus, to eliminate most of your outsourcing expenses and the need to maintain costly, stand-alone color laser beam printers, the Canon imageRUNNER C6870U/C5870U devices offer the ability to deliver color output at up to 16 ppm (letter).

Like all imageRUNNER solutions, users and administrators are provided with every necessary tool for quick, intuitive programming of all features, whether standing at the device using its large, full-color touch-screen interface panel, or from the desktop through device drivers and utilities supplied by Canon.

Function	imageRUNNER C6870U/C5870U
Copy	Standard
Mail Box	Standard
Print	Optional:* UFR II, PCL 5c and PostScript® 3
Scan	Standard Color Network ScanGear
Color Universal Send™	Standard: Color Universal Send Optional: PDF High Compression Kit Optional: Universal Send PDF Enhancement Kit**
Super G3 Fax	Optional
Web Access	Optional
MEAP	Standard

\* Choose one of two print controller options: Color UFR II/PCL/PS Printer Kit-L1 or imagePASS-G1.

\*\* PDF High Compression Kit-A1 required.



# THE imageRUNNER C6870U/C5870U DEVICES HELP MAKE YOUR WORK FLOW

## Robust Engine Design

- Sturdy frame



## Unparalleled Speed

- Up to 70-ipm high-speed color scanning
- Standard 100-sheet Duplexing Automatic Feeder
- 68/58 ppm (B/W); 16 ppm (Color)

## Reliable Consumables and Supplies

- Easy-to-replace toners
- Durable Canon A-Si Drum
- High-yielding B/W toner and Oil-free color S-toners



NEW

## Canon Color imagePlatform Architecture

- 1GB RAM and 80GB HDD
- Mail Box: local archival solution
- Dedicated LSI with dual processor design
- Remote UI device management



## Advanced Finishing Options

- Two types of finishers
- Corner, double, saddle-stitch
  - Extensive stacking capacity
- Hole-punching
- Two or three

Finisher-R1



Saddle-Finisher-R2\*



Puncher Unit-M1



## Superior Paper Handling

- Up to 7,700-sheet paper capacity
- 100-sheet Bypass Tray
- Up to 140 lb. Index media weights
- Up to 13" x 19" media sizes

Paper Supply



## Accessibility Options

- Voice Guidance Kit-A2
- Remote Operator's Software Kit-A1
- Accessibility Handle-A1
- Braille Label Kit-A1

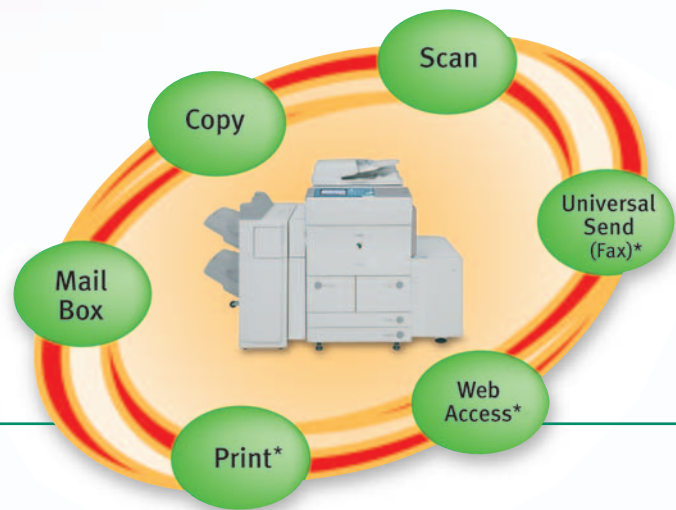
\*Configured with optional additional Finisher Tray-A1

## DESIGNED TO MEET THE NEEDS OF THE MOST DEMANDING ENVIRONMENTS

The imageRUNNER C6870U/C5870U models build on Canon's next-generation Color imagePlatform architecture, offering both traditional and new capabilities that allow you to accomplish the most complex, high-volume jobs with ease.

With the ability to support color digital network printing, copying, sending, and storage functions, plus Internet-ready features, the imageRUNNER C6870U/C5870U solutions can handle all document output needs, whether the originals reside in electronic or hard-copy form. And, accessing the imageRUNNER C6870U/C5870U capabilities are easy, too.

The new Canon imageRUNNER C6870U/C5870U models offer several design features to aid in device reliability and durability. They feature a dedicated LSI with dual processor, 1GB RAM, 80GB Hard Disk Drive, and a robust sturdy frame that allows the devices to stand up to the rigors of continuous long runs and high-volume output. Combined with high-yielding consumables and supplies, operating costs and downtime are kept to



a minimum. Canon's Amorphous Silicon Drum (A-Si) also delivers high reliability over millions of impressions for both black-and-white and color output.

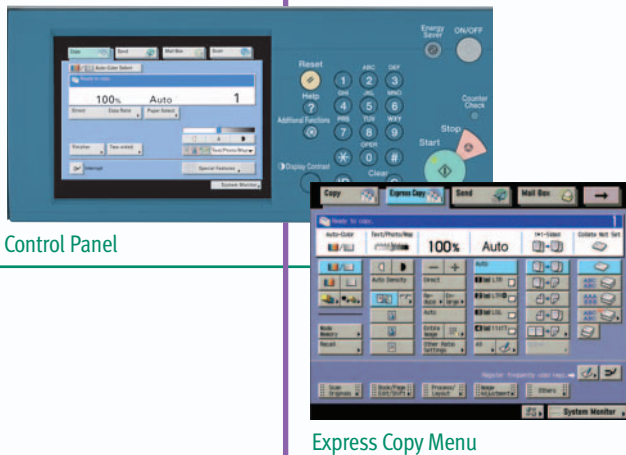
Communication is key. With Canon's Color Universal Send technology, users can communicate quickly and easily by ensuring the instantaneous delivery of information to all recipients simultaneously, whether it be via Scan-to-E-Mail/I-Fax/File or Mail Box. And it's available as a standard feature, so there's never any downtime!

In addition, the imageRUNNER C6870U/C5870U devices will support your creation of exciting and attention-grabbing documents with extensive document-handling options, finishing capabilities, and support for a variety of paper media, sizes, and weights.

\* Optional accessories required.

## EASE-OF-USE

When digital copying of a full-color or monochrome hard copy is required, you can take full advantage of the neatly organized full-color user interface. The easy-to-use touch-screen provides a choice of two copy interface screens—the standard display and the Express Copy menu—and you can easily switch between them.



Control Panel

Express Copy Menu

The Express Copy user interface helps you speed up the programming of desired copy features. There's even a language switch to jump easily to another language for multilingual offices or executives visiting from abroad.

## ADVANCED COPYING FEATURES

The imageRUNNER C6870U/C5870U devices offer many standard advanced copy functions. You can create virtually unlimited combinations of page/copy set numbering, watermark, and date printing modes to meet your office's document tracking and Bates Stamping requirements. Automatic Color Selection decides which pages are to be printed in black and white or full color, saving you time and money. And if you're seeking document-editing tools, Area Designation allows for a wide range of image and color manipulation features.

## MAIL BOX FEATURES

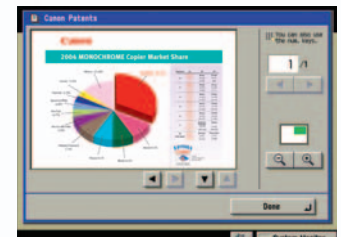
For true office productivity, you can store frequently used forms, presentations, proposals, and spreadsheets with the Mail Box function on the imageRUNNER C6870U/C5870U models. With this standard feature, these devices can be used to store hard-copy-based originals to support centralized information-sharing, on-site document storage, and print-on-demand applications. Once stored in the Mail Box, documents may be password-protected for increased security, previewed for easy identification, combined and printed as one job with the desired settings, or sent to other destinations.

In addition, using the Merge and Save function, you can create new documents, delete or insert individual pages into a file, and even save them to multiple Mail Boxes in a single operation. If the resulting file is larger than your e-mail server can handle, the URL address of the document in the Mail Box can be sent to a user's e-mail address and recipients can download the file at their convenience with Canon's URL Send function.\*

### Mail Box



### Mail Box Preview



\* Recipients must be within Local Area Network.

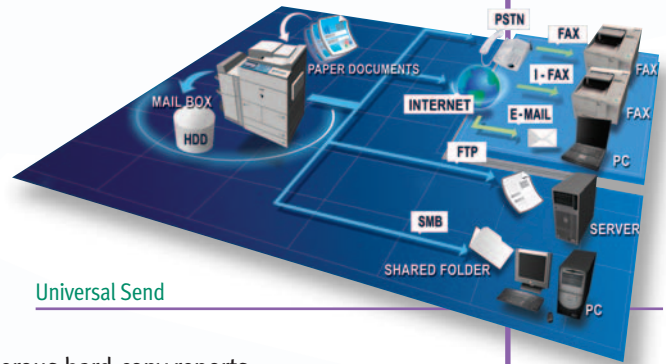
## COMMUNICATE WITHOUT BARRIERS

With standard Color Universal Send, the process of distributing documents couldn't be easier.

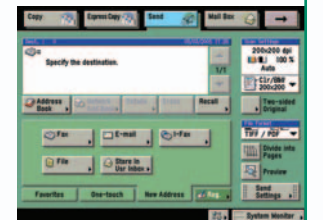
With Canon's proprietary Universal Send technology, the imageRUNNER devices allow workgroup users to distribute scanned documents to multiple network destinations—such as individual or group e-mail and Internet fax addresses, local Mail Boxes, fax, network folders, and document management systems—in one simple operation.

This allows organizations to leverage the power of their existing network infrastructure to share and manage numerous hard-copy reports, such as sales figures, monthly quota updates, and marketing changes. By sending these reports simultaneously, this all-in-one operation eliminates the expense and administrative burden associated with using conventional methods of printing, filing, and forwarding hard-copy documents.

The imageRUNNER C6870U/C5870U devices also answer the call from basic document distribution with optional Super G3 faxing capabilities. Faxes received on these devices can be programmed to distribute to multiple locations, ultimately saving time and money.

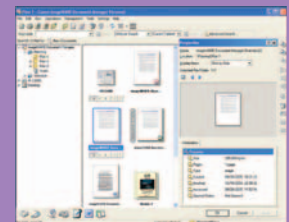


Send Main Menu



### EMPOWER YOUR PERSONAL WORKPLACE PRODUCTIVITY

imageWARE™ Document Manager Personal Version 4 is Canon's desktop product that enables effective management of your critical business documents. With imageWARE Document Manager Personal, you can archive, edit, and retrieve a broad variety of documents from those scanned electronic files right at your desktop. It works seamlessly with Canon's imageRUNNER devices to capture paper documents for an integrated digital workflow. And when your business and needs grow, you can easily migrate to Document Manager Workgroup and Enterprise Editions for more robust functionality.





# TRULY INNOVATIVE SOLUTIONS

## Universal Send Options

### PDF HIGH COMPRESSION TECHNOLOGY

Efficiently handling electronic information can be a huge burden on a business, especially when electronic file sizes are rather large. Canon's solution is its proprietary PDF High Compression Mode, which dramatically reduces the size of the resulting PDF files when documents are distributed via Color Universal Send. With PDF High Compression technology, working and communicating with color documents in the general office can now become the norm.

### CREATING PDF DOCUMENTS WITH SEARCHABLE TEXT

With Canon's new PDF Enhancement Kit for Universal Send, you can easily scan and convert paper documents into PDF files with text information included. This allows you to later find scanned documents by keyword, enabling you to extract and reuse text data for creating a new document. Using Canon's Searchable PDF feature, you can easily incorporate the scanned documents into your electronic workflow.

### CREATING ENCRYPTED PDF FILES

Canon's imageRUNNER C6870U/C5870U models offer similar password-based security used by Adobe® Acrobat® software. This security feature allows you to assign a password to encrypt a PDF you created before it's sent. If a document is inadvertently routed to the wrong destination, you can now be confident that the files sent across the network are secure and can only be opened using a viable password.

#### PDF High Compression Mode

#### File Size Comparison

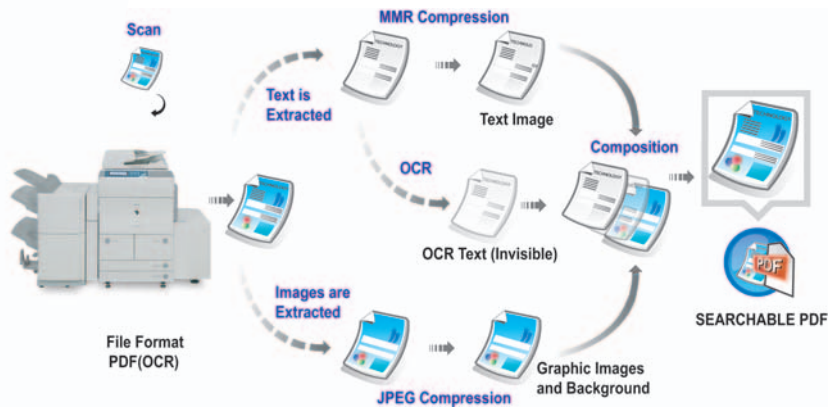
Original: Letter-Sized Hard Copy (Color Graphics with Text)



Canon's PDF (Compact)  
300-dpi Color Scan  
**File Size: 150KB**

PDF File Format  
300-dpi Color Scan  
**File Size: 2MB**

PDF File Format  
300-dpi B/W Scan  
**File Size: 390KB**



Searchable PDF with PDF High Compression

## READY...SET...PRINT

### Powerful Printing Capabilities at Your Fingertips

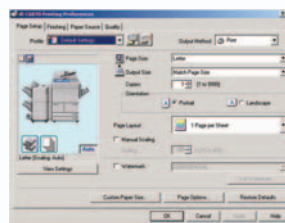
A choice of two print controllers ensures that the imageRUNNER C6870U/C5870U devices are ready to tackle any printing task. Both models leverage the power of dual processors to ready pages for output faster than ever before and drive the engines at rated speeds for maximum productivity.

The Color UFR II/PCL/PS Printer Kit-L1 is available as an option on each model, supporting PCL, PostScript® 3™ (emulation), plus Canon's proprietary UFR II (Ultra Fast Rendering) technology for exceptional printing performance in both Windows® and Macintosh® environments.

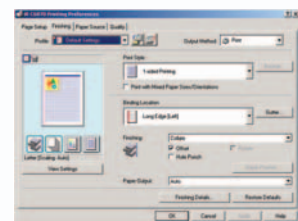
Canon's UFR II printing technology offers the ideal blend of speed and simplicity for budget-conscious offices producing typical Microsoft® Office files. This unique printing solution uses the processing power of the sending PC to balance the data load and augment its own capabilities to prepare files at blazing speed. As a result, professionally finished documents are generated quickly from a few simple point-and-click print commands in the user-friendly UFR II driver screens.

For organizations with higher bandwidth requirements, choose the imagePASS-G1 print controller, which features its own hardware dedicated to printing applications. This option provides support for genuine Adobe PostScript 3 and PCL 5c, as well as the value-added capabilities of EFI's Command WorkStation™ utilities.

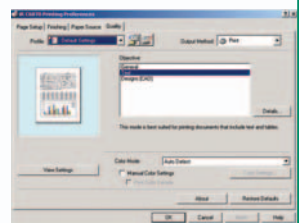
Page Setup Tab



Finishing Tab



Quality Tab



## PRINTING MADE SIMPLE

The imageRUNNER C6870U/C5870U devices allow you to add digital data to printed sets—such as set numbering for document tracking needs—with complete control over size, position, numbers, color, and density. When the file needs to be archived, the device can even print to multiple Mail Box destinations in a single operation for paperless document storage.

Special printing requirements are no longer a hassle. Canon helps you get back to doing your real job. Print PDF files directly, without having to open Acrobat, insert separator pages between jobs, and even restrict the ability of individual network addresses to access the printer.

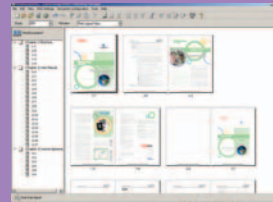
## PRINT FROM THE WEB WITHOUT A PC

The Canon imageRUNNER C6870U/C5870U models also offer the industry's first-ever Web Access function. This option allows users to call up Internet or intranet data on the full-size user interface panel for information retrieval and printing of forms and PDF documents—without the use of a PC.\*



## PUT IT ALL TOGETHER WITH CANON imageWARE PUBLISHING MANAGER

The powerful combination of imageRUNNER hardware and Canon's optional imageWARE Publishing Manager software delivers a complete solution for compound document creation with optimal output quality. Produce professional-looking documents combining various source files, color inserts, and content types with access to a number of editing, imposition, stamping, and finishing capabilities. Every connected user now has the ability to create sophisticated manuals, brochures, catalogs, proposals, reports, books, and presentations in a simple drag-and-drop document building environment.



## DEVICE MANAGEMENT AND SECURITY

Canon provides peace of mind with every imageRUNNER C6870U/C5870U Device

Device Management and Security

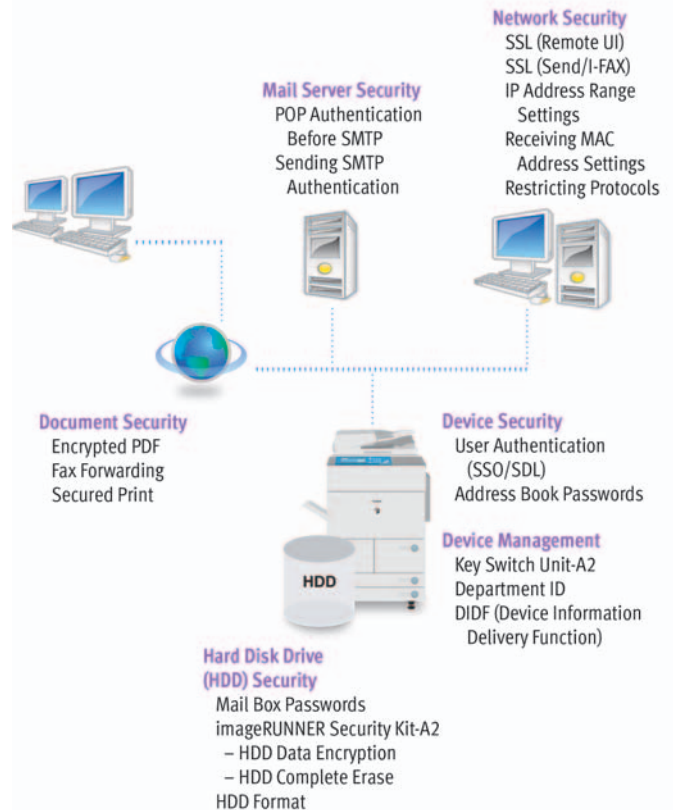
Ever since MFPs have become a mainstay in network environments, Canon imageRUNNER devices are subject to intense scrutiny to ensure that they're not vulnerable. Fortunately, Canon has equipped the imageRUNNER devices with many security features that can put the security-conscious decision-maker at ease.

### USER AUTHENTICATION

The imageRUNNER C6870U/C5870U devices' security features protect every bit and byte of critical information. Password-protect Address Books, Mail Boxes, individual files, and even encrypt data and passwords as they flow over the network to help prevent outside interception. Network-enabled user authentication tools are included, such as Simple Device Login (SDL) and also Single Sign-On (SSO) which permits existing network IDs and passwords to be used so employees can maintain a single identity for all network security functions.

### imageRUNNER SECURITY KIT

Canon has taken comprehensive measures to ensure that your confidential data is kept secure. With the optional imageRUNNER Security Kit-A2—an optional software package that offers 168-bit encryption and initiates the overwriting of hard disks to completely erase previously stored data—your information is kept safe and secure so you can feel at ease.



### ACCESSIBILITY FEATURES: TOTAL ACCESS TO ALL USERS

The imageRUNNER C6870U/C5870U devices go even further to help ensure equal access to all authorized users. Users can operate the system from a laptop or desktop computer using the Remote Operator's Software Kit-A1 that emulates control panel operability on a PC screen. Users with visual impairments can receive audible confirmation of copy jobs through the optional Voice Guidance Kit-A2. Together, these features bring professional documents to production, regardless of physical abilities.



Voice Guidance Kit



# SPECIFICATIONS



Saddle Finisher-R2      Finisher-R1      Puncher Unit-M1      Main Unit      Side Paper Deck-U1

## MAIN UNIT

Type:	Color Digital, Multifunction Imaging System
Imaging System:	Laser Dry Electrostatic Transfer
Developing System (B/W, Color):	Dry Monocomponent/Dual Component Developing System
Image Server Memory:	Standard 1GB RAM + 80GB HDD
First-Copy Time:	5.3 Seconds (B/W) 12.2 Seconds (Color)
Warm-Up Time:	9 Minutes or Less
Copy Speed (B/W, Color):*	68/58, 16 ppm (Letter) 34, 7.8 ppm (Legal) 28, 7.8 ppm (11" x 17") 25, 5.2 ppm (12" x 18"/13" x 19") 42, 7.8 ppm (Letter-R) 68/58, 16 ppm (Statement-R)
Acceptable Originals:	Sheets, Books, 3-Dimensional Items (Up to 4.4 lb.)
Max. Original Size:	11" x 17"
Max. Copy Size:	13" x 19"
Min. Copy Size:	3-15/16" x 5-7/8"
Max. Mail Boxes Supported:	100
Max. Copy Reservation:	5 Jobs
Copy/Scan Resolution:	600 x 600 dpi (256 Gradations) 8 Bit x 3 Colors
Engine Resolution:	600 x 600 dpi
Print Resolution:	2400 dpi x 600 dpi Interpolated
Copy Exposure:	Automatic or Manual (9 Levels)
Original Type:	Text, Photo, Printed Image, Text/Photo/Map
Halftones:	256 Gradations (Continuous-Tone)
Duplexing:	Standard Automatic Trayless Duplexing
Magnification:	25% to 400% (in 1% Increments)
Preset Reduction/Enlargement:	25%, 50%, 64%, 73%, 78%, 121%, 129%, 200%, 400%
Special Features:	Two-Page Separation, Cover/Sheet Insertion, Image Combination, Shift, Booklet, Transparency Interleaving, Job Done Notice, Margin, Different Size Originals, Job Build, Scan Image Check, Frame Erase, Image Creation, Sharpness, Image Adjustment, Area Designation, Form Composition, Page/Copy Set Numbering, Recall, Watermark/ Print Date, Mode Memory
Multiple Copies:	1 to 9,999
Network Scanning Utility:	Color Network ScanGear

Paper Sources Standard:	Dual Front-Loading Trays (1,500 Sheets Each) Dual Front-Loading Cassettes (550 Sheets Each) 100-Sheet Stack Bypass
Optional:	3,500-Sheet Paper Deck (Total: 7,700 Sheets)
Paper Weights:	17 lb. Bond to 110 lb. Index (Trays, Cassettes, Optional Paper Deck) 17 lb. Bond to 140 lb. Index (Manual Bypass Tray)
Dimensions (H x W x D):	46-7/8" x 26-3/4" x 33-1/2" (1191mm x 679mm x 852mm)
Installation Space (W x D):	57-3/4" x 33-1/2" (1468mm x 852mm) (with Stack Bypass Extended)
Weight:	498 lb. (226kg)
Power Requirements:	120V, 60Hz, 16A
Power Consumption:	1.75kW
Plug:	NEMA 5-20R
Drum:	Amorphous Silicon – Estimated Yield: 3,000,000 Impressions
Toner	
Black:	Magnetic Negative Toner Estimated Yield: 40,000 Images (at 6% Coverage)
Colors:	Non-Magnetic Negative Toners Estimated Yield: 9,500 Images (at 5% Coverage)
<b>Color Universal Send (Standard)</b>	
Sending Methods:	E-Mail, I-Fax, Super G3 Fax (Optional), File Server (IPX, FTP, SMB), User Inbox (Includes URL Send)
Address Book Capacity:	Max. 1,800 Destinations Max. 5 LDAP Servers
File Formats:	TIFF, JPEG, PDF, PDF (Compact)** PDF (OCR)**/**
Sending Sizes:	Statement to 11" x 17"
<b>Automatic Document Feeder (Standard)</b>	
Acceptable Originals:	Statement to 11" x 17"
Capacity:	100 Sheets (Letter/20 lb.)
Max. Paper Weights:	13 lb. to 32 lb. Bond (Simplex) 17 lb. to 32 lb. Bond (Duplex)
Original Scanning Speeds:	1-Sided: 50 Sheets/Minute (Letter in B/W and Color); 70 Sheets/Minute @ 300 x 300 dpi (Letter in B/W and Color) <sup>†</sup>
Original Feeding Method:	From First Page (Top of Original)
Power Source:	From Main Unit
Weight:	Approximately 32.4 lb. (14.7kg)

## OPTIONAL ACCESSORIES

<b>Finisher-R1/Saddle Finisher-R2</b>	
Number of Trays:	2 Trays
Tray Capacity	
Non-Collate, Collate, and Group Mode:	1,000 Sheets (Letter, Statement, Statement-R, Executive) 500 Sheets (Legal, Letter-R, 11" x 17", 12" x 18", 13" x 19")
Staple Mode:	1,000 Sheets/30 Sets (Letter, Executive) 500 Sheets/30 Sets (Legal, Letter-R, 11" x 17")
Max. Stapling Capacity	
Corner, Double:	50 Sheets (Letter), 30 Sheets (Letter-R, Legal, 11" x 17"; 17 lb. to 20 lb. Bond)
Acceptable Paper Weights:	17 lb. Bond to 140 lb. Index
Saddle-Stitching**	
Acceptable Paper Sizes:	Letter-R, Legal, 11" x 17"
Tray Capacity:	1 to 5 Sheets/25 Sets 6 to 10 Sheets/15 Sets 11 to 15 Sheets/10 Sets
Max. Stapling Capacity/Set:	15 Sheets
Folding:	V-Fold
<b>Additional Finisher Tray-A1***</b>	
Capacity:	100 Sheets (Top Finisher Tray 1,000-Sheet Max. Decrease to 500)
<b>Puncher Unit-M1*</b>	
Max. Paper Weight:	Up to 140 lb. Index
Paper Sizes:	Letter, Legal, 11" x 17", Executive
Punch Method:	Sequential Processing System (One Sheet at a Time)
Punch Types:	2-Hole/3-Hole (Auto Change) 3-Hole (Letter, 11" x 17") 2-Hole (Legal, Letter-R, Executive)
Punch Waste Tray Capacity:	Approximately 3,000 Sheets
Punch Waste Tray Access:	Front
Power Source:	From Finisher-R1 or Saddle Finisher-R2
Dimensions (H x W x D):	32-3/4" x 4-1/4" x 24-1/4" (833mm x 107mm x 615mm)
Weight:	Approximately 15.9 lb. (7.2kg)
<b>Side Paper Deck-U1</b>	
Number of Drawers:	1
Paper Capacity:	3,500 Sheets (20 lb. Bond)
Paper Size:	Letter
Paper Weight:	17 lb. Bond to 110 lb. Index
Power Source:	From Main Unit
Dimensions (H x W x D):	22-3/8" x 12-7/8" x 23" (569.5mm x 326mm x 583mm)
Weight:	Approximately 101 lb. (46kg)

(Specifications are continued on back cover.)

**Color UFR II/PCL/PS Printer Kit-L1**

Processor:	Canon Custom Processor—Shared
RAM:	1GB (Std./Max.)—Shared
Hard Disk:	80GB—Shared
PDL Support:	PCL 5c, PostScript® 3™ Emulation, UFR II
Interface Connections:	10/100Base-T (RJ-45), USB 2.0
Network OS:	Windows® 98/Me/2000/XP Windows NT® 4.0/Server 2003 Solaris™ 1.1x, 2.5x, or later, Mac OS 9.1 or later (PPD), Mac OS X (10.1.5 or later), Novell NetWare v.3.2, 4.1, 4.11, 4.2, 5, 5.1, 6, 6.5 (IPX/SPX™)
Print Service NetWare:	NDS Pserver, Bindery Pserver, Nprinter, Rprinter
TCP/IP:	LPD/LPR, RAW (Port 9100), IPP 1.1, SMB, FTP
AppleTalk:	PAP (PostScript)
Printer Drivers UFR II:	Windows 2000/XP Windows Server 2003 Citrix MetaFrame Macintosh OS X (10.1.5 or later)
PCL 5c:	Windows 98/Me/2000/XP Windows NT 4.0/Server 2003 Citrix MetaFrame
PS 3 Emulation:	Windows 98/Me/2000/XP Windows NT 4.0/Server 2003 Citrix MetaFrame Macintosh OS X (10.2 or later)

**imagePASS-G1**

Type:	External Piggy-Back Controller
Processor:	Intel® Celeron® M 1.2GHz
RAM:	256MB (Std.), 512MB (Max.)
Hard Disk:	80GB
PDL Support:	Adobe PostScript 3, PCL 5c

Interface Connections:	10/100/1000Base-T (RJ-45)
Internal Fonts PS:	136 Fonts (117 Adobe® Type and 19 TrueType®)
PCL 5c:	113 Roman
Protocol Stacks:	Ethernet
IPX/SPX:	802.2, 802.3, Ethernet II, Ethernet SNAP
TCP/IP:	Ethernet II
AppleTalk:	Ethernet SNAP
Network OS:	Novell NetWare v.5.x or later 5.1/6.0 (IPX/SPX) Windows 98/Me/2000/XP/ Server 2003 (TCP/IP), Solaris 2.5.1 or later, Mac OS 9.2 or later, Mac OS X 10.2.4 or later
Dimensions (H x W x D):	13" x 11-1/4" x 3-1/2" 332mm x 287mm x 90mm
Weight:	10.9 lb. (5kg)
Power Requirements:	100 to 240V, 50/60Hz, 2A
Power Consumption:	35W
Additional Functions:	Color Network ScanGear
Fiery® Tools:	WebTools™, Command WorkStation®, Fiery Downloader™, Fiery Remote Scan, ColorWise® Pro Tools (Calibrator, Color Editor, Profile Manager, Color Setup, Spot-On®)
Optional:	EFI Densitometer ED-100, Impose, Secure Erase

**Super G3 Fax Board-U1**

Applicable Line:	Public Switched Telephone Network (PSTN)
Connection Lines:	One
Sending/Original Size:	Statement to 11" x 17" (from Document Feed)
Recording/Printing Size:	Statement to 11" x 17"

**Other Optional Accessories and Utilities**

- Accessibility Handle-A1
  - Barcode Printing Kit-A1
  - Braille Label Kit-A1
  - Card Reader-C1
  - Card Reader Attachment-C1
  - Card Sets
  - Cassette-AA1
  - Copy Tray-K1
  - Document Tray-K1
  - eCopy Suite
  - imageRUNNER Security Kit-A2\*\*
  - imageWARE™ Suite
  - Key Switch Unit-A2
  - NetSpot Suite
  - Stamp Unit-A1
  - PDF High Compression Kit-A1
  - Remote Operator's Software Kit-A1
  - Security Expansion Board-E1
  - Universal Send PDF Enhancement Kit-C1\*\*
  - Voice Guidance Kit-A2
  - Web Access Software Kit-D1\*\*\*
- \* During printing, the engine may occasionally pause for internal adjustment.
- \*\* Requires PDF High Compression Kit-A1.
- \*\*\* Requires Universal Send PDF Enhancement Kit-C1.
- † 70 ipm @ 300 x 300 dpi available only for Send and Scan modes.
- †† Available on Saddle Finisher-R2 only.
- ††† Use of Additional Finisher Tray-A1 will alter top tray capacity when outputting Letter/Statement-R/Executive documents.
- ▲ Puncher Unit-M1 can only be installed with either the Finisher-R1 or Saddle Finisher-R2.
- ▲▲ Requires Security Expansion Board-E1.
- ▲▲▲ Requires Color UFR II/PCL/PS Printer Kit-L1 if printing PDF files.



As an ENERGY STAR® Partner, Canon U.S.A., Inc. has determined that these products meet the ENERGY STAR guidelines for energy efficiency. ENERGY STAR and the ENERGY STAR mark are registered U.S. marks. Microsoft, Windows, and Windows NT are registered trademarks of Microsoft Corporation in the United States and/or other countries. Acrobat, Adobe, and PostScript are registered trademarks of Adobe Systems Incorporated in the United States and/or other countries. Apple and Macintosh are registered trademarks of Apple Computer, Inc. Intel and Pentium are registered trademarks of Intel Corporation. Novell and NetWare are registered trademarks of Novell, Inc. in the United States and other countries. Solaris is a trademark of Sun Microsystems, Inc. in the United States and other countries. EFI and Command WorkStation are registered trademarks of Electronics for Imaging, Inc. in the U.S. Patent and Trademark Office and certain other foreign jurisdictions. CANON and IMAGERUNNER are registered trademarks, and UNIVERSAL SEND and the GENUINE logo are trademarks of Canon Inc. in the United States and may also be registered trademarks or trademarks in other countries. REMOTE UI is a trademark of Canon U.S.A., Inc. IMAGEWARE is a registered trademark of Canon U.S.A., Inc. in the United States and is a trademark of Canon Inc. in certain countries. IMAGEANYWARE is a trademark of Canon. All referenced product names and other marks are trademarks of their respective owners. Specifications subject to change without notice. ©2006 Canon U.S.A., Inc. All rights reserved.

Federal Law prohibits copying of certain documents. Violators may be subject to penalties. We suggest that you check with your own legal counsel. Canon U.S.A., Inc. and Canon Canada, Inc. intend to cooperate with Law Enforcement Agencies in connection with claims of unauthorized copying.

1-800-OK-CANON  
www.usa.canon.com

Canon U.S.A., Inc.  
One Canon Plaza  
Lake Success, NY 11042

0058W115  
0106-C6870U/C5870U-72M-PNR

