

Cassette Feeding Unit-AE1

PARTS CATALOG



Canon

MARCH 9, 2010
REV. 0

PREFACE

This Parts Catalog contains listings of parts used

Diagrams are provided with the listings to aid the service technician in identifying clearly, the item to be ordered.

Whenever ordering parts, consult this Parts Catalog for all of the information pertaining to each item. Be sure to include, in the Parts Request, the full item description, the item part number, and the quantity.

COPYRIGHT (C) 1999 CANON INC.

Use of this manual should be strictly supervised to avoid disclosure of confidential information.

Contents

NUMERICAL INDEX

Cassette Module-W1/CST. Feeding Unit-AE1(Numerical Index) 1-1

Cassette Module-W1/CST. Feeding Unit-AE1(Parts Catalog)

A	ASSEMBLY LOCATION DIAGRAM	2-1
H10	EXTERNAL COVERS, PANELS, ETC. (Cassette Module-W1)	2-3
H10A	EXTERNAL COVERS, PANELS, ETC. (CST. Feeding Unit-AE1)	2-5
H11	INTERNAL COMPONENTS (Cassette Module-W1)	2-7
H11A	INTERNAL COMPONENTS (CST. Feeding Unit-AE1)	2-9
H13	RIGHT DOOR ASS'Y (Cassette Module-W1)	2-11
H13A	RIGHT DOOR ASS'Y (CST. Feeding Unit-AE1)	2-12
H20	PICK-UP DRIVE ASS'Y (Cassette Module-W1)	2-13
H20A	PICK-UP DRIVE ASS'Y (CST. Feeding Unit-AE1)	2-14
H30	CASSETTE	2-15
H40	PAPER PICK-UP ASSEMBLY, LARGE (EXCEPT CN)	2-19
H45	PAPER PICK-UP ASSEMBLY, LARGE (CST. Feeding Unit-AE1/ CN)	2-22
H90	PEDESTAL CONTROLLER PCB ASS'Y (Cassette Module-W1)	2-25
H91	CST. PEDESTAL CONT. PCB ASS'Y (CST. Feeding Unit-AE1)	2-26
ZZA	MECHANICAL STANDARD PARTS (HOW TO USE)	2-27
ZZB	MECHANICAL STANDARD PARTS (SCREWS)	2-28
ZZC	MECHANICAL STANDARD PARTS (BOLTS)	2-35
ZZD	MECHANICAL STANDARD PARTS (NUTS)	2-36
ZZE	MECHANICAL STANDARD PARTS (RETAINING RINGS)	2-37

NUMERICAL INDEX

Cassette Module-W1/CST. Feeding Unit-AE1(Numerical Index)

PARTS NUMBER	FIGURE & KEY NO.	PARTS NUMBER	FIGURE & KEY NO.	PARTS NUMBER	FIGURE & KEY NO
FB6-3380-020	H40 - 20	FC8-2462-000	H30 - 37	FC9-4680-000	H10 - 3
FB6-3380-020	H45 - 20	FC8-2463-000	H30 - 38	FC9-4681-000	H10 - 4
FB6-3387-000	H40 - 3	FC8-2464-000	H30 - 39	FC9-4682-000	H10 - 5
FB6-3388-000	H40 - 6	FC8-2466-000	H30 - 60	FC9-4683-000	H10 - 6
FB6-3388-000	H45 - 6	FC8-2469-000	H30 - 15	FC9-4691-000	H11 - 7
FB6-3389-000	H40 - 7	FC8-2470-000	H30 - 16	FC9-5715-000	H10A - 6
FB6-3389-000	H45 - 7	FC8-2474-000	H30 - 17	FC9-5722-000	H13A - 5
FB6-3391-000	H40 - 8	FC8-2475-000	H30 - 18	FC9-5723-000	H13 - 6
FB6-3391-000	H45 - 8	FC8-2484-000	H30 - 47	FC9-5723-000	H13A - 4
FB6-3392-020	H40 - 9	FC8-2670-000	H30 - 19	FC9-5724-000	H30 - 6
FB6-3392-020	H45 - 9	FC8-2671-000	H30 - 20	FC9-5725-000	H30 - 3
FB6-3395-000	H40 - 11	FC8-2672-000	H30 - 21	FC9-5726-000	H30 - 2
FB6-3395-000	H45 - 11	FC8-3782-000	H13 - 1	FC9-5727-000	H30 - 4
FB6-3396-010	H40 - 12	FC8-3782-000	H13A - 3	FC9-7105-000	H11A - 2
FB6-3396-010	H45 - 12	FC8-4962-000	H30 - 52	FC9-7107-000	H30 - 56
FB6-3397-000	H40 - 13	FC8-4963-000	H30 - 53	FC9-7170-000	H30 - 59
FB6-3397-000	H45 - 13	FC8-4964-000	H30 - 48	FC9-7171-000	H30 - 58
FB6-3398-000	H40 - 14	FC8-4965-000	H30 - 49	FC9-7245-000	H30 - 64
FB6-3398-000	H45 - 14	FC8-4966-000	H30 - 50	FC9-7249-000	H30 - 7
FB6-3402-000	H40 - 15	FC8-4967-000	H30 - 1	FC9-7250-000	H10A - 7
FB6-3402-000	H45 - 15	FC8-4969-000	H30 - 8	FC9-7253-000	H40 - 10
FB6-3403-000	H40 - 16	FC8-4970-000	H30 - 22	FC9-7253-000	H45 - 10
FB6-3403-000	H45 - 16	FC8-4986-000	H30 - 9	FC9-7259-000	H30 - 11
FB6-3404-000	H40 - 17	FC8-4987-000	H30 - 10	FC9-7260-000	H30 - 12
FB6-3404-000	H45 - 17	FC8-4989-000	H30 - 24	FC9-7261-000	H30 - 13
FB6-3405-000	H40 - 1	FC8-4990-000	H30 - 25	FE9-0290-000	H11A - 3
FB6-3410-000	H40 - 18	FC8-4992-000	H30 - 32	FF6-2397-000	H40 - 56
FB6-3410-000	H45 - 18	FC8-4993-000	H30 - 5	FF6-2397-000	H45 - 56
FB6-3413-000	H40 - 19	FC8-4994-000	H30 - 51	FK2-0149-000	H40 - 28
FB6-3413-000	H45 - 19	FC8-4996-000	H30 - 26	FK2-0149-000	H45 - 28
FB6-4852-000	H40 - 2	FC8-4997-000	H30 - 61	FK2-0408-000	H40 - 29
FB6-7078-000	H40 - 21	FC8-5262-000	H30 - 46	FK2-0408-000	H45 - 29
FB6-7078-000	H45 - 21	FC9-0104-000	H11A - 1	FK2-1773-000	H90 - IC
FC5-0592-000	H13A - 2	FC9-0120-000	H10A - 1	FK2-1773-000	H91 - IC
FC5-0631-000	H13A - 1	FC9-0121-000	H10A - 2	FK2-7327-000	H20 - 2
FC6-5022-000	H20 - 1	FC9-0122-000	H10A - 3	FK2-7327-000	H20A - 2
FC6-5022-000	H20A - 1	FC9-0123-000	H10A - 4	FL2-6580-000	H40 - 30
FC6-6661-000	H40 - 4	FC9-0124-000	H10A - 5	FL2-6580-000	H45 - 30
FC6-6661-000	H45 - 4	FC9-0127-000	H30 - 28	FL2-8282-000	H45 - 3
FC6-7083-000	H40 - 5	FC9-0128-000	H30 - 29	FL2-9472-000	H30 - 33
FC6-9867-000	H40 - 22	FC9-0129-000	H30 - 30	FL3-1313-000	H11 - 2
FC6-9867-000	H45 - 22	FC9-0130-000	H30 - 31	FL3-1313-000	H11A - 4
FC7-5845-000	H40 - 23	FC9-0133-000	H30 - 57	FL3-2858-000	H30 - 27
FC7-5845-000	H45 - 23	FC9-0139-000	H11A - 14	FL3-2859-000	H30 - 23
FC7-9381-000	H45 - 1	FC9-4290-000	H40 - 27	FM3-4146-000	H40 - 53
FC7-9502-000	H45 - 5	FC9-4290-000	H45 - 27	FM3-4146-000	H45 - 53
FC8-1178-000	H40 - 24	FC9-4672-000	H13 - 2	FM3-4150-000	H45 - 2
FC8-1178-000	H45 - 24	FC9-4674-000	H13 - 3	FM3-5933-000	H11A - 5
FC8-1202-000	H40 - 25	FC9-4675-000	H13 - 4	FM3-6069-000	H20 - 3
FC8-1202-000	H45 - 25	FC9-4676-000	H13 - 5	FM3-6069-000	H20A - 3
FC8-1205-000	H40 - 26	FC9-4678-000	H10 - 1	FM3-6120-000	H11 - 4
FC8-1205-000	H45 - 26	FC9-4679-000	H10 - 2	FM3-6120-000	H11A - 6

NUMERICAL INDEX

Cassette Module-W1/CST. Feeding Unit-AE1(Numerical Index)

PARTS NUMBER	FIGURE & KEY NO.	PARTS NUMBER	FIGURE & KEY NO.	PARTS NUMBER	FIGURE & KEY NO.
FM3-8905-000	H30 - 54	FU3-0352-000	H45 - 55	XF2-1604-940	H20A - 6
FM3-8906-000	H30 - 44	FU5-1033-000	H40 - 45	XH9-0125-000	H11 - 1
FM3-8907-000	H30 - 45	FU5-1033-000	H45 - 45	XZ9-0618-000	H11A - 10
FM3-8911-000	H30 - 55	FU5-1035-000	H13 - 8		
FM3-8915-000	H11 - 6	FU5-1035-000	H13A - 8		
FM3-8915-000	H11A - 12	FU5-1763-000	H40 - 46		
FM3-9230-000	H40 -	FU5-1763-000	H45 - 46		
FM3-9234-000	H20 -	FU5-2060-000	H13A - 7		
FM3-9234-000	H20A -	FU6-2684-000	H40 - 47		
FM3-9236-000	H13A -	FU6-2684-000	H45 - 47		
FM4-1201-000	H40 - 54	FU6-2784-000	H40 - 48		
FM4-1201-000	H45 - 54	FU6-2784-000	H45 - 48		
FM4-1202-000	H91 -	FU7-0445-000	H40 - 49		
FM4-1208-000	H11A - 7	FU7-0445-000	H45 - 49		
FM4-1569-000	H11 - 3	FU7-0848-000	H40 - 50		
FM4-2524-000	H11A - 8	FU7-0848-000	H45 - 50		
FM4-2525-000	H40 - 58	FU7-2326-000	H30 - 40		
FM4-2525-000	H45 - 58	FU7-2327-000	H30 - 41		
FM4-2526-000	H45 -	FU7-2328-000	H30 - 62		
FM4-2531-000	H90 -	FU7-2513-000	H30 - 42		
FS5-1943-009	H40 - 31	FU7-2514-000	H30 - 43		
FS5-1943-009	H45 - 31	FU7-2515-000	H30 - 63		
FS5-6945-000	H30 - 34	FU7-2518-000	H30 - 14		
FS7-2788-000	H13 - 7	FU7-5378-000	H40 - 32		
FS7-2788-000	H13A - 6	FU7-5378-000	H45 - 32		
FS7-2800-000	H40 - 33	NPN	H10 -		
FS7-2800-000	H45 - 33	NPN	H10A -		
FS7-2801-000	H40 - 34	NPN	H11 -		
FS7-2801-000	H45 - 34	NPN	H11A -		
FS7-2803-000	H40 - 35	NPN	H13 -		
FS7-2803-000	H45 - 35	NPN	H30 -		
FU3-0280-000	H40 - 36	VS1-7177-002	H40 - 57		
FU3-0280-000	H45 - 36	VS1-7177-002	H45 - 57		
FU3-0282-000	H40 - 37	WG8-5783-000	H11A - 9		
FU3-0282-000	H45 - 37	XA9-0656-000	H40 - 51		
FU3-0283-000	H40 - 38	XA9-0656-000	H45 - 51		
FU3-0283-000	H45 - 38	XA9-1016-000	H11A - 13		
FU3-0284-000	H40 - 39	XA9-1016-000	H30 - 35		
FU3-0284-000	H45 - 39	XA9-1386-000	H10 - 7		
FU3-0285-000	H20 - 4	XA9-1386-000	H10A - 8		
FU3-0285-000	H20A - 4	XA9-1386-000	H11 - 5		
FU3-0288-000	H40 - 40	XA9-1386-000	H11A - 11		
FU3-0288-000	H45 - 40	XA9-1523-000	H30 - 36		
FU3-0289-000	H40 - 41	XD1-4200-402	H10A - 501		
FU3-0289-000	H45 - 41	XD1-4200-402	H11A - 501		
FU3-0347-000	H40 - 42	XD3-2200-122	H40 - 501		
FU3-0347-000	H45 - 42	XD3-2200-122	H45 - 501		
FU3-0349-000	H40 - 43	XD9-0136-000	H20 - 5		
FU3-0349-000	H45 - 43	XD9-0136-000	H20A - 5		
FU3-0350-000	H40 - 44	XD9-0136-000	H40 - 52		
FU3-0350-000	H45 - 44	XD9-0136-000	H45 - 52		
FU3-0352-000	H40 - 55	XF2-1604-940	H20 - 6		

Cassette Module-W1/CST. Feeding Unit-AE1(Parts Catalog)

Cassette Module-W1

F27-7521-000 FWQ

F27-7551-000 HFE

MODEL WITH CASSETTE
HEATER

CST. Feeding Unit-AE1

EXCEPT CN F27-5113-000 FWR

CN F27-5143-000 G C V

EXCEPT CN F27-5153-000 HFF

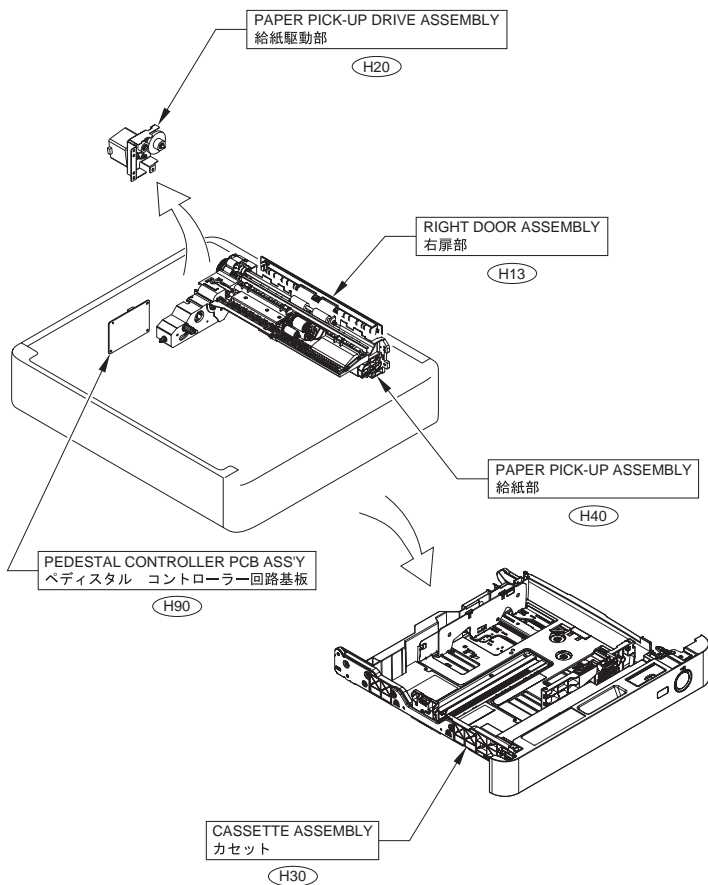
MODEL WITH CASSETTE
HEATER

Contents

A	ASSEMBLY LOCATION DIAGRAM	2-1
H10	EXTERNAL COVERS, PANELS, ETC. (Cassette Module-W1).....	2-3
H10A	EXTERNAL COVERS, PANELS, ETC. (CST. Feeding Unit-AE1).....	2-5
H11	INTERNAL COMPONENTS (Cassette Module-W1).....	2-7
H11A	INTERNAL COMPONENTS (CST. Feeding Unit-AE1).....	2-9
H13	RIGHT DOOR ASS'Y (Cassette Module-W1).....	2-11
H13A	RIGHT DOOR ASS'Y (CST. Feeding Unit-AE1).....	2-12
H20	PICK-UP DRIVE ASS'Y (Cassette Module-W1).....	2-13
H20A	PICK-UP DRIVE ASS'Y (CST. Feeding Unit-AE1).....	2-14
H30	CASSETTE	2-15
H40	PAPER PICK-UP ASSEMBLY, LARGE (EXCEPT CN).....	2-19
H45	PAPER PICK-UP ASSEMBLY, LARGE (CST. Feeding Unit-AE1/CN).....	2-22
H90	PEDESTAL CONTROLLER PCB ASS'Y (Cassette Module-W1).....	2-25
H91	CST. PEDESTAL CONT. PCB ASS'Y (CST. Feeding Unit-AE1).....	2-26
ZZA	MECHANICAL STANDARD PARTS (HOW TO USE).....	2-27
ZZB	MECHANICAL STANDARD PARTS (SCREWS).....	2-28
ZZC	MECHANICAL STANDARD PARTS (BOLTS).....	2-35
ZZD	MECHANICAL STANDARD PARTS (NUTS).....	2-36
ZZE	MECHANICAL STANDARD PARTS (RETAINING RINGS).....	2-37

FIGURE A ASSEMBLY LOCATION DIAGRAM

Cassette Module-W1



CST. Feeding Unit-AE1

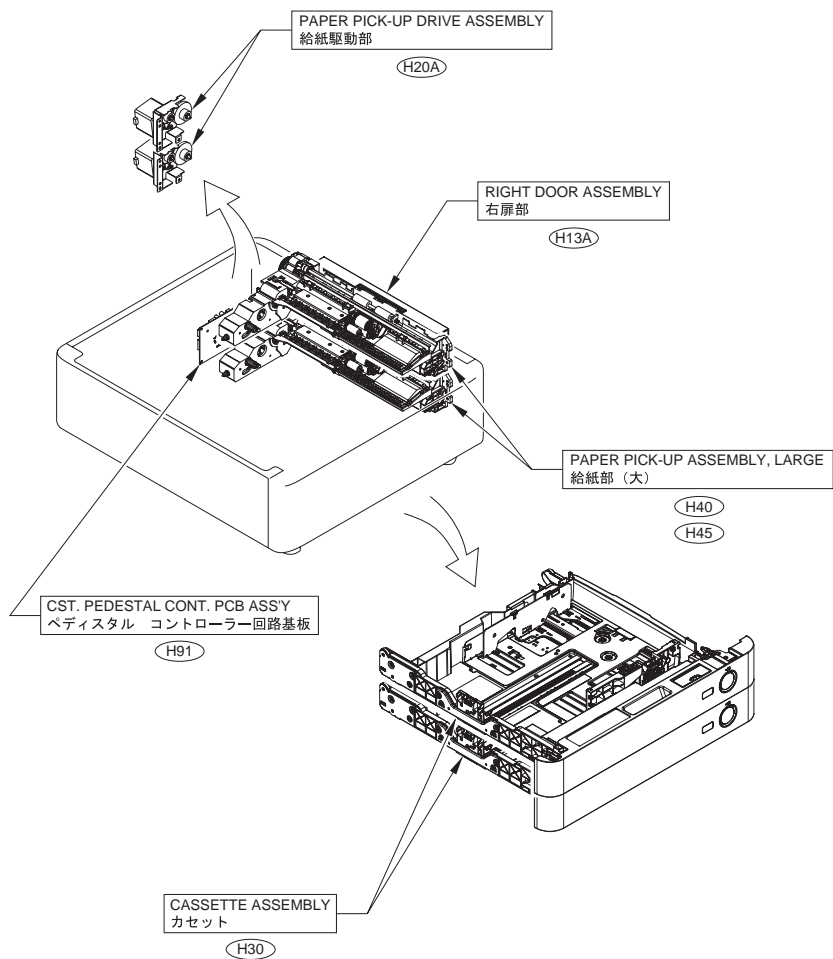


FIGURE H10
EXTERNAL COVERS, PANELS, ETC. (Cassette
Module-W1)

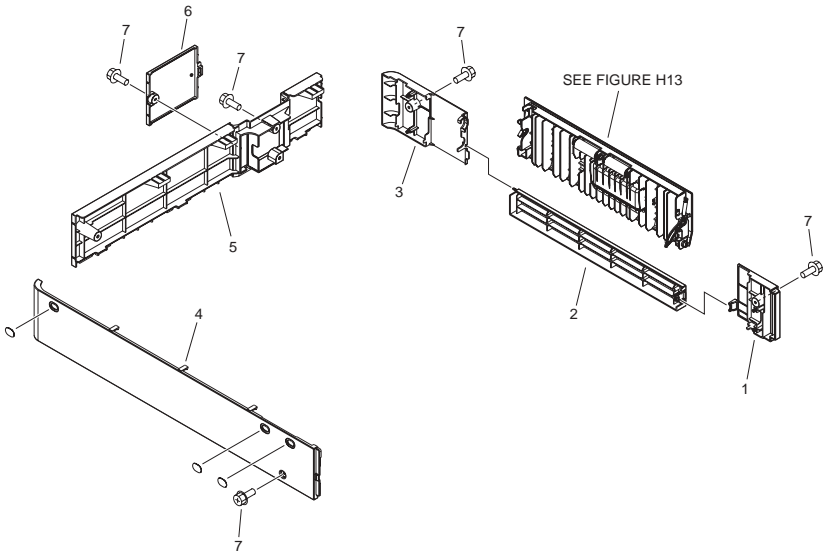


FIGURE & KEY NO.	PARTS NUMBER	RANK	Q'TY	DESCRIPTION	SERIAL NUMBER/REMARKS	SVC
Fig.H10	NPN		RF	EXTERNAL COVERS, PANELS, ETC.	Cassette Module-W1	
1	FC9-4678-000		1	PANEL, RIGHT FRONT		
2	FC9-4679-000		1	PANEL, RIGHT, CENTER		
3	FC9-4680-000		1	PANEL, RIGHT, REAR		
4	FC9-4681-000		1	PANEL, LEFT		
5	FC9-4682-000		1	PANEL, REAR		
6	FC9-4683-000		1	COVER, CONNECTOR		
7	XA9-1386-000		AR	SCREW,RS,M3X8		

FIGURE H10A
EXTERNAL COVERS, PANELS, ETC. (CST. Feeding
Unit-AE1)

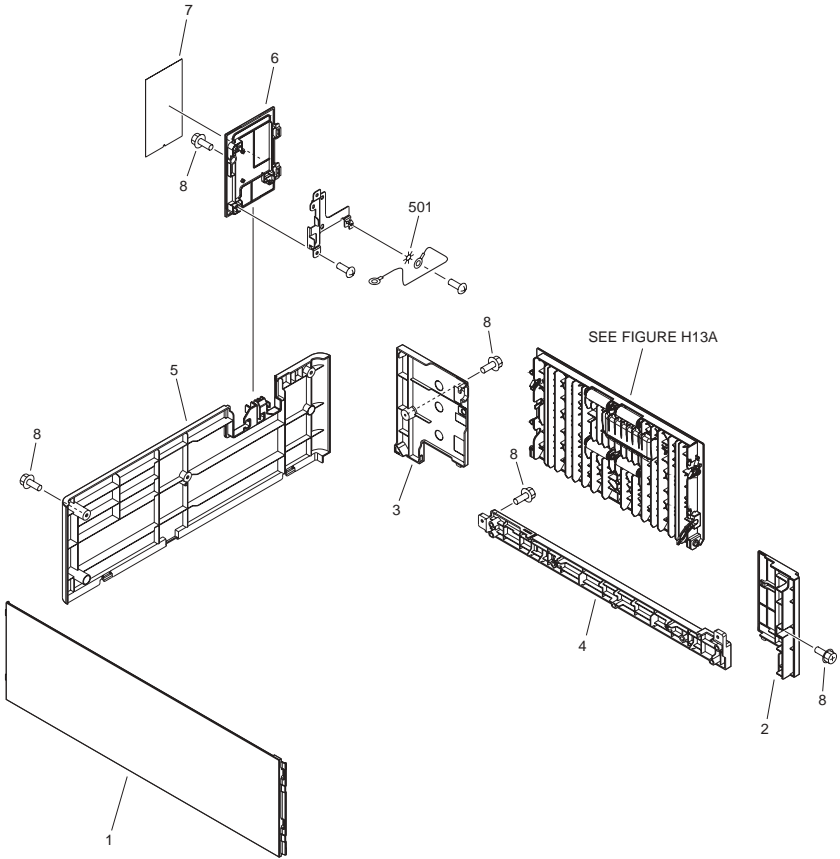


FIGURE & KEY NO.	PARTS NUMBER	R A N K	Q'TY	DESCRIPTION	SERIAL NUMBER/ REMARKS	S V C
Fig.H10A	NPN		RF	EXTERNAL COVERS, PANELS, ETC.	CST. Feeding Unit-AE1	
1	FC9-0120-000		1	COVER, LEFT		
2	FC9-0121-000		1	COVER, RIGHT, FRONT		
3	FC9-0122-000		1	COVER, RIGHT, REAR		
4	FC9-0123-000		1	COVER, RIGHT, LOWER		
5	FC9-0124-000		1	COVER, REAR		
6	FC9-5715-000		1	COVER, CONNECTOR		
7	FC9-7250-000		1	LABEL, TRANSPORT CAUTION		
8	XA9-1386-000		AR	SCREW,RS,M3X8		
501	XD1-4200-402		1	WASHER, TOOTHED LOCK, M4		

FIGURE H11 INTERNAL COMPONENTS (Cassette Module-W1)

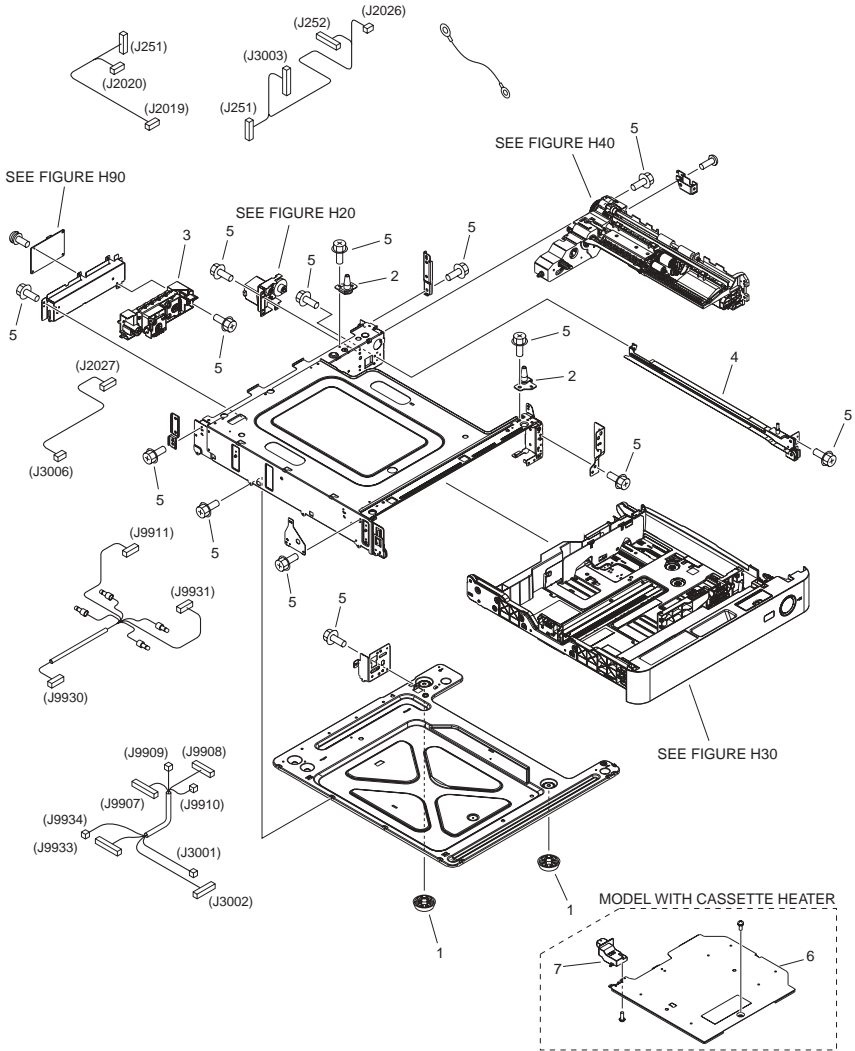


FIGURE & KEY NO.	PARTS NUMBER	RANK	Q'TY	DESCRIPTION	SERIAL NUMBER/REMARKS	SVC
Fig.H11	NPN		RF	INTERNAL COMPONENTS	Cassette Module-W1	
1	XH9-0125-000		2	FOOT		
2	FL3-1313-000		2	PIN, POSITIONING		
3	FM4-1569-000		1	AUTO SIZE DETECT ASSEMBLY		
4	FM3-6120-000		1	CASSETTE RAIL ASSEMBLY, RIGHT		
5	XA9-1386-000		AR	SCREW,RS,M3X8		
6	FM3-8915-000		1	CASSETTE HEATER ASSEMBLY	MODEL WITH CASSETTE HEATER	
7	FC9-4691-000		1	COVER, HEATER CONNECTOR	MODEL WITH CASSETTE HEATER	

FIGURE H11A INTERNAL COMPONENTS (CST. Feeding Unit-AE1)

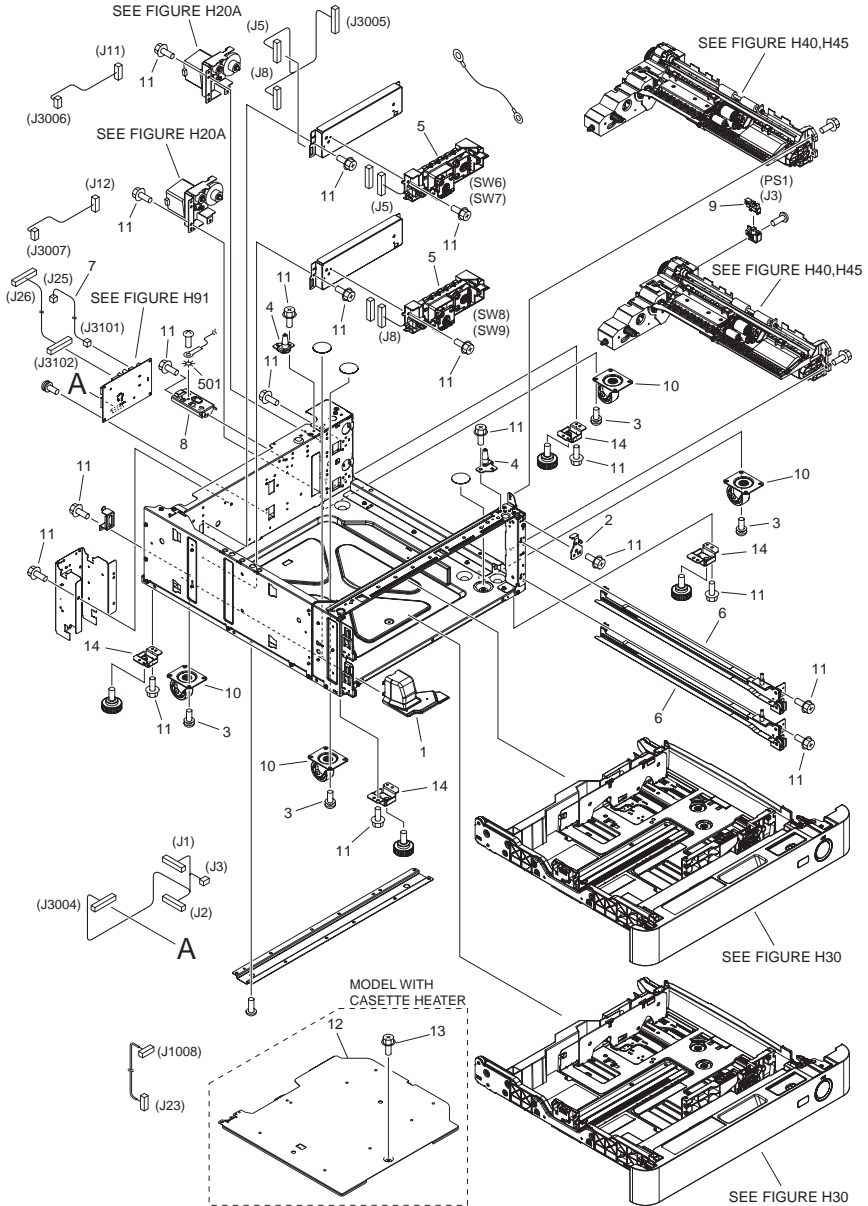


FIGURE & KEY NO.	PARTS NUMBER	R A N K	Q'TY	DESCRIPTION	SERIAL NUMBER/REMARKS	S V C
Fig.H11A	NPN		RF	INTERNAL COMPONENTS	CST. Feeding Unit-AE1	
1	FC9-0104-000		1	COVER, HEATER CONNECTOR		
2	FC9-7105-000		1	PLATE, COUPLING		
3	FE9-0290-000		8	SCREW, W/WASHER		
4	FL3-1313-000		2	PIN, POSITIONING		
5	FM3-5933-000		2	AUTO SIZE DETECT ASSEMBLY	SW6,SW7,SW8,SW9	
6	FM3-6120-000		2	CASSETTE RAIL ASSEMBLY, RIGHT		
7	FM4-1208-000		1	CABLE, C. P. POWER CONNECTING		
8	FM4-2524-000		1	COVER STOPPER ASS'Y		
9	WG8-5783-000		1	IC,PHOTO-INTERRUPTER,LG248NL1A	PS1	
10	XZ9-0618-000		4	CASTER		
11	XA9-1386-000		AR	SCREW,RS,M3X8		
12	FM3-8915-000		1	CASSETTE HEATER ASSEMBLY	MODEL WITH CASSETTE HEATER	
13	XA9-1016-000		1	SCREW, WWASHER, M3X6	MODEL WITH CASSETTE HEATER	
14	FC9-0139-000		4	SUPPORT, ADJUSTER		
501	XD1-4200-402		1	WASHER, TOOTHED LOCK, M4		

FIGURE H13 RIGHT DOOR ASS'Y (Cassette Module-W1)

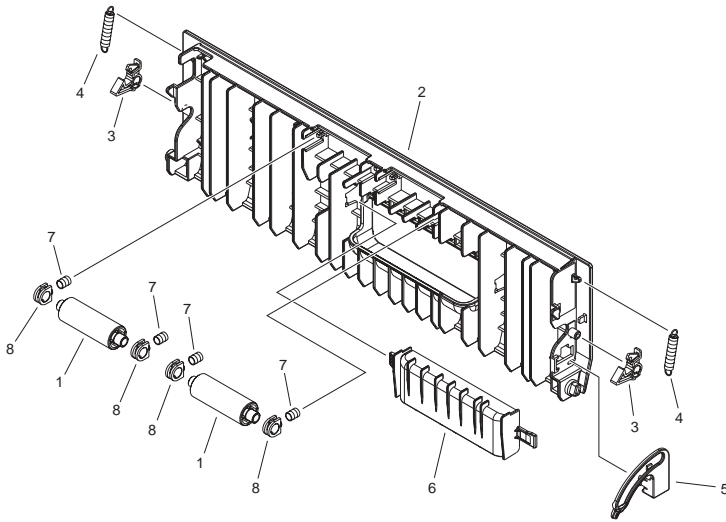


FIGURE & KEY NO.	PARTS NUMBER	RANK	Q'TY	DESCRIPTION	SERIAL NUMBER/REMARKS	S V C
Fig.H13	NPN		RF	RIGHT DOOR ASS'Y	Cassette Module-W1	
1	FC8-3782-000		2	ROLLER, PAPER FEED		
2	FC9-4672-000		1	DOOR, RIGHT		
3	FC9-4674-000		2	FOOK, RIGHT DOOR		
4	FC9-4675-000		2	SPRING, TENSION		
5	FC9-4676-000		1	STOPPER, RIGHT DOOR		
6	FC9-5723-000		1	HANDLE, RIGHT DOOR, LOWER		
7	FS7-2788-000		4	SPRING		
8	FU5-1035-000		4	BUSHING		

FIGURE H13A RIGHT DOOR ASS'Y (CST. Feeding Unit-AE1)

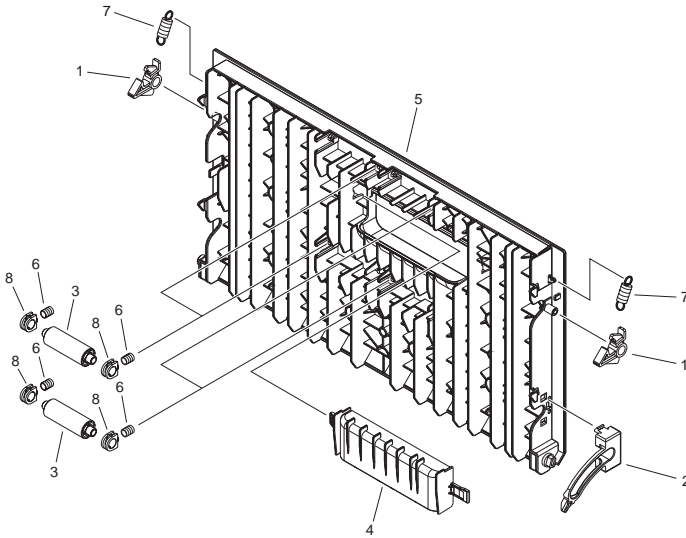


FIGURE & KEY NO.	PARTS NUMBER	R A N K	QTY	DESCRIPTION	SERIAL NUMBER/ REMARKS	S V C
Fig.H13A	FM3-9236-000		1	RIGHT DOOR ASS'Y	CST. Feeding Unit-AE1	
1	FC5-0631-000		2	HOOK, RIGHT DOOR		
2	FC5-0592-000		1	STOPPER, RIGHT LOWER DOOR		
3	FC8-3782-000		4	ROLLER, PAPER FEED		
4	FC9-5723-000		1	HANDLE, RIGHT DOOR, LOWER		
5	FC9-5722-000		1	DOOR, RIGHT		
6	FS7-2788-000		8	SPRING		
7	FU5-2060-000		2	SPRING, TENSION		
8	FU5-1035-000		8	BUSHING		

FIGURE H20 PICK-UP DRIVE ASS'Y (Cassette Module-W1)

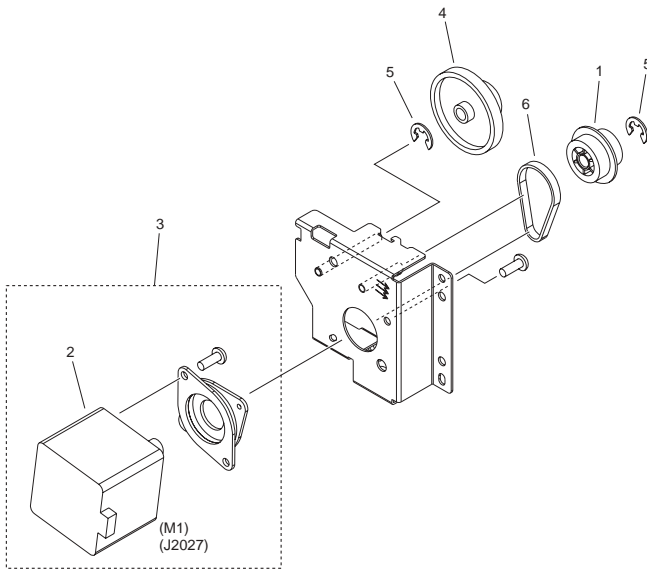


FIGURE & KEY NO.	PARTS NUMBER	RANK	QTY	DESCRIPTION	SERIAL NUMBER/REMARKS	SVC
Fig.H20	FM3-9234-000		1	PICK-UP DRIVE ASS'Y	Cassette Module-W1	
1	FC6-5022-000		1	PULLEY, 34T	M1	
2	FK2-7327-000		1	MOTOR, STEPPING		
3	FM3-6069-000		1	MOTOR ASS'Y		
4	FU3-0285-000		1	GEAR, 80T/16T		
5	XD9-0136-000		2	RING, E		
6	XF2-1604-940		1	BELT,TIMING		

FIGURE H20A PICK-UP DRIVE ASS'Y (CST. Feeding Unit-AE1)

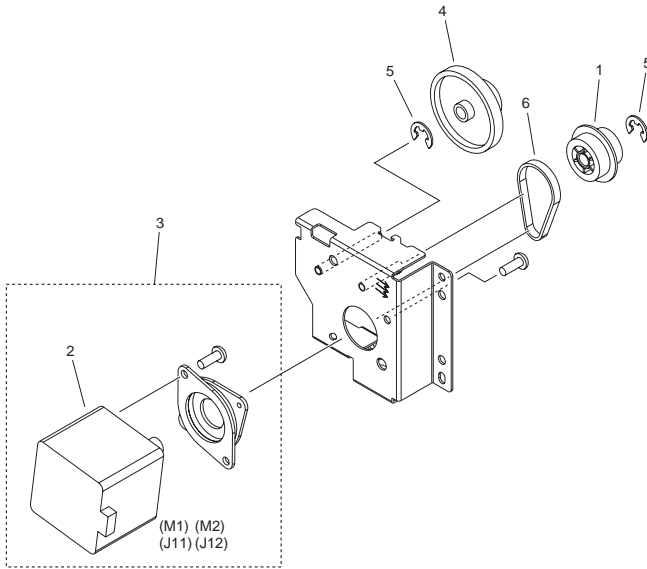


FIGURE & KEY NO.	PARTS NUMBER	RANK	QTY	DESCRIPTION	SERIAL NUMBER/REMARKS	SVC
Fig.H20A	FM3-9234-000		2	PICK-UP DRIVE ASS'Y	CST. Feeding Unit-AE1	
1	FC6-5022-000		1	PULLEY, 34T	M1,M2	
2	FK2-7327-000		1	MOTOR, STEPPING		
3	FM3-6069-000		1	MOTOR ASS'Y		
4	FU3-0285-000		1	GEAR, 80T/16T		
5	XD9-0136-000		2	RING, E		
6	XF2-1604-940		1	BELT,TIMING		

FIGURE H30 CASSETTE

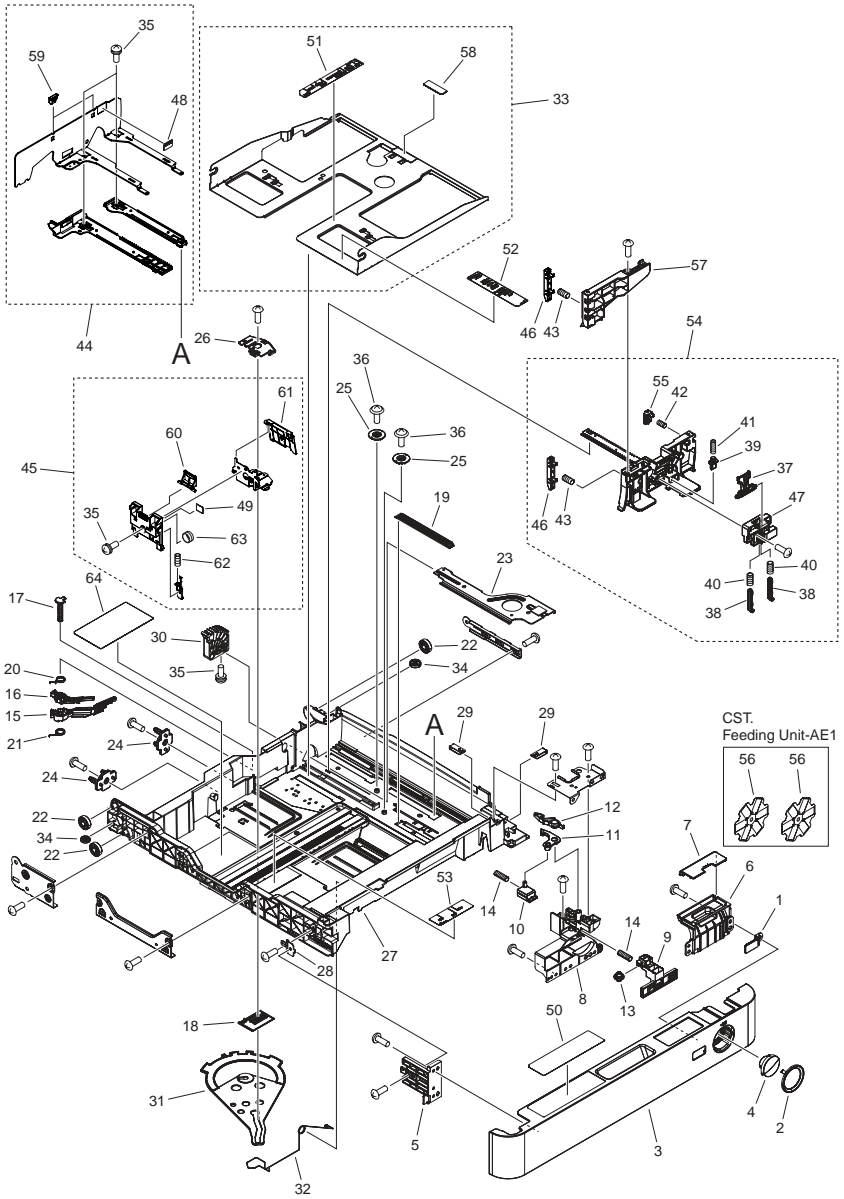


FIGURE & KEY NO.	PARTS NUMBER	R A N K	Q'TY	DESCRIPTION	SERIAL NUMBER/ REMARKS	S V C
Fig.H30	NPN		RF	CASSETTE		
1	FC8-4967-000		1	WINDOW, CST FR. COVER IND.		
2	FC9-5726-000		1	RING, BUTTON		
3	FC9-5725-000		1	COVER, CASSETTE FRONT		
4	FC9-5727-000		1	BUTTON, PUSH		
5	FC8-4993-000		1	PLATE, COVER ATTACHMENT, LEFT		
6	FC9-5724-000		1	HOLDER, SIZE INDEX LABEL		
7	FC9-7249-000		1	COVER, SIZE PLATE		
8	FC8-4969-000		1	MOUNT,CST. FR. COVER ADJUST,R		
9	FC8-4986-000		1	LINK, BUTTON, UPPER, 2		
10	FC8-4987-000		1	LINK, BUTTON, LOWER		
11	FC9-7259-000		1	ARM, LOCK, A		
12	FC9-7260-000		1	ARM, LOCK, B		
13	FC9-7261-000		1	ROLLER, LINK		
14	FU7-2518-000		2	SPRING		
15	FC8-2469-000		1	DIAL, DETECT, SMALL		
16	FC8-2470-000		1	DIAL, DETECT, LARGE		
17	FC8-2474-000		1	SHAFT		
18	FC8-2475-000		1	PLATE, JOINT		
19	FC8-2670-000		1	PLATE, FREE STOP		
20	FC8-2671-000		1	SPRING		
21	FC8-2672-000		1	SPRING		
22	FC8-4970-000		3	ROLLER, CASSETTE SWING		
23	FL3-2859-000		1	PLATE, LIFTER		
24	FC8-4989-000		2	PIN, SIZE DETECT POSITIONING		
25	FC8-4990-000		2	PLATE, SYNCHRONOUS		
26	FC8-4996-000		1	COVER, TOP		
27	FL3-2858-000		1	BODY, CASSETTE, L		
28	FC9-0127-000		1	PLATE, COVER MOUNTING, L		
29	FC9-0128-000		2	PLATE, COVER MOUNTING, R		
30	FC9-0129-000		1	GEAR, 50T		
31	FC9-0130-000		1	LINK, BACK END DETECT		

FIGURE & KEY NO.	PARTS NUMBER	R A N K	Q'TY	DESCRIPTION	SERIAL NUMBER/ REMARKS	S V C
32	FC8-4992-000		1	WIRE,CENTER PLATE GROUNDING,L	CST. Feeding Unit-AE1	
33	FL2-9472-000		1	PLATE, CENTER		
34	FS5-6945-000		2	COLLAR, REGISTRATION MULTI		
35	XA9-1016-000		6	SCREW W/WASHER, M3X6		
36	XA9-1523-000		2	SCREW, B, M4X8		
37	FC8-2462-000		1	KNOB, PAPER SIDE END		
38	FC8-2463-000		2	STOPPER		
39	FC8-2464-000		1	PLATE, CLICK		
40	FU7-2326-000		2	SPRING, COMPRESSION		
41	FU7-2327-000		1	SPRING, COMPRESSION		
42	FU7-2513-000		1	SPRING, COMPRESSION		
43	FU7-2514-000		2	SPRING, COMPRESSION		
44	FM3-8906-000		1	SIDE END PLATE ASSEMBLY, REAR		
45	FM3-8907-000		1	BACK END LIMIT PLATE ASSEMBLY		
46	FC8-5262-000		2	BLOCK, PAPER SIDE END, LARGE		
47	FC8-2484-000		1	COVER, HANDLE		
48	FC8-4964-000		1	LABEL, HEIGHT LIMIT, S		
49	FC8-4965-000		1	LABEL, HEIGHT LIMIT, R		
50	FC8-4966-000		1	LABEL, PAPER PICK-UP OPERATION		
51	FC8-4994-000		1	LABEL, SIZE INDEX, END		
52	FC8-4962-000		1	LABEL, SIZE INDEX, SIDE, LARGE		
53	FC8-4963-000		1	LABEL, SIZE INDEX, END, LARGE		
54	FM3-8905-000		1	SIDE END PLATE ASSEMBLY, FRONT		
55	FM3-8911-000		1	SIDE END BLOCK ASSEMBLY, SMALL		
56	FC9-7107-000		2	PLATE, SIZE		
57	FC9-0133-000		1	PLATE,PAPER SIDE END EXTENSION		
58	FC9-7171-000		1	SHEET, SEPARATION		
59	FC9-7170-000		2	CLAW, SIDE		
60	FC8-2466-000		1	LEVER		
61	FC8-4997-000		1	FLAP		
62	FU7-2328-000		1	SPRING, COMPRESSION		
63	FU7-2515-000		1	SPRING, COMPRESSION		

FIGURE & KEY NO.	PARTS NUMBER	R A N K	Q'TY	DESCRIPTION	SERIAL NUMBER/ REMARKS	S V C
64	FC9-7245-000		1	LABEL, PAPER SIZE, CAUTION		

FIGURE H40 PAPER PICK-UP ASSEMBLY, LARGE (EXCEPT CN)

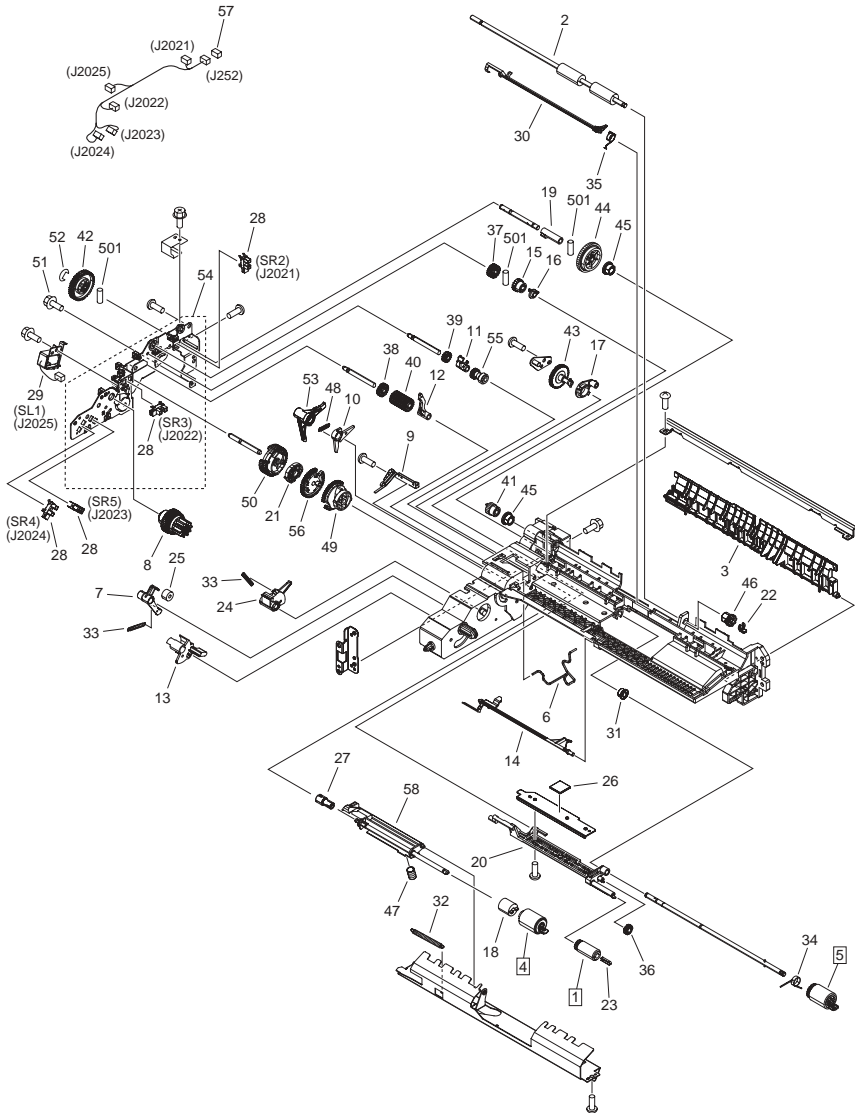


FIGURE & KEY NO.	PARTS NUMBER	R A N K	Q'TY	DESCRIPTION	SERIAL NUMBER/ REMARKS	S V C
Fig.H40	FM3-9230-000		2	PAPER PICK-UP ASSEMBLY, LARGE	EXCEPT CN	
1	FB6-3405-000		1	ROLLER, PAPER PICK-UP	[DP]	
2	FB6-4852-000		1	ROLLER, VERTICAL PATH		
3	FB6-3387-000		1	GUIDE, VERTICAL PATH		
4	FC6-6661-000		1	ROLLER, SEPARATION	[DP]	
5	FC6-7083-000		1	ROLLER, FEED/SEPARATION	[DP]	
6	FB6-3388-000		1	ROD, SEPARATION ROLLER RELEASE		
7	FB6-3389-000		1	CLAW, PICK-UP		
8	FB6-3391-000		1	GEAR, RATCHET		
9	FB6-3392-020		1	SPRING, LEAF		
10	FC9-7253-000		1	ARM, LIFTING		
11	FB6-3395-000		1	ARM, PAPER FEED SHAFT		
12	FB6-3396-010		1	LOCK, PICK-UP		
13	FB6-3397-000		1	FLAG, PAPER SENSOR		
14	FB6-3398-000		1	FLAG, PAPER DETECT SENSOR		
15	FB6-3402-000		1	GEAR, RATCHET		
16	FB6-3403-000		1	COUPLING, FEED SHAFT STOP		
17	FB6-3404-000		1	COUPLING, SEPARATION SHAFT		
18	FB6-3410-000		1	LIMITER, TORQUE		
19	FB6-3413-000		1	COLLAR, PAPER PICK-UP SHAFT		
20	FB6-3380-020		1	HOLDER, PICK-UP ROLLER		
21	FB6-7078-000		1	CAM, LOCK		
22	FC6-9867-000		1	RING, RETAINING		
23	FC7-5845-000		1	STOPPER, ROLLER		
24	FC8-1178-000		1	CLAW, PAPER PICK-UP		
25	FC8-1202-000		1	DAMPER		
26	FC8-1205-000		1	PAD, PAPER PICK-UP HOLDER		
27	FC9-4290-000		1	JOINT, RETARD		
28	FK2-0149-000		4	PHOTO-INTERRUPTER, TLP1252(C6)	SR2,SR3,SR4,SR5	
29	FK2-0408-000		1	SOLENOID	SL1	
30	FL2-6580-000		1	FLAG, REGISTRATION SENSOR		
31	FS5-1943-009		1	BUSHING		

FIGURE & KEY NO.	PARTS NUMBER	R A N K	Q'TY	DESCRIPTION	SERIAL NUMBER/ REMARKS	S V C
32	FU7-5378-000		1	SPRING, TENSION		
33	FS7-2800-000		2	SPRING, TENSION		
34	FS7-2801-000		1	SPRING, TORSION		
35	FS7-2803-000		1	SPRING, TORSION		
36	FU3-0280-000		1	GEAR, 15T		
37	FU3-0282-000		1	GEAR, 21T		
38	FU3-0283-000		1	GEAR, 21T		
39	FU3-0284-000		1	GEAR, 16T		
40	FU3-0288-000		1	GEAR, 21T		
41	FU3-0289-000		1	GEAR, 14T		
42	FU3-0347-000		1	GEAR, 41T		
43	FU3-0349-000		1	GEAR, 41T		
44	FU3-0350-000		1	GEAR, 41T/41T		
45	FU5-1033-000		2	BUSHING		
46	FU5-1763-000		1	BUSHING		
47	FU6-2684-000		1	SPRING, COMPRESSION		
48	FU6-2784-000		1	SPRING, TENSION		
49	FU7-0445-000		1	GEAR, 42T		
50	FU7-0848-000		1	GEAR, 51T		
51	XA9-0656-000		1	SCREW,RS,M3X10		
52	XD9-0136-000		1	RING, E		
53	FM3-4146-000		1	PICK-UP ARM UNIT		
54	FM4-1201-000		1	PICK-UP DRIVE SIDE PLATE ASS'Y		
55	FU3-0352-000		1	GEAR, 16T		
56	FF6-2397-000		1	GEAR, 46T		
57	VS1-7177-002		1	CONNECTOR, SNAP TIGHT, BK		
58	FM4-2525-000		1	HOLDER, SEPARATION ROLLER		
501	XD3-2200-122		3	PIN, DOWEL		

FIGURE H45 PAPER PICK-UP ASSEMBLY, LARGE (CST. Feeding Unit-AE1/CN)

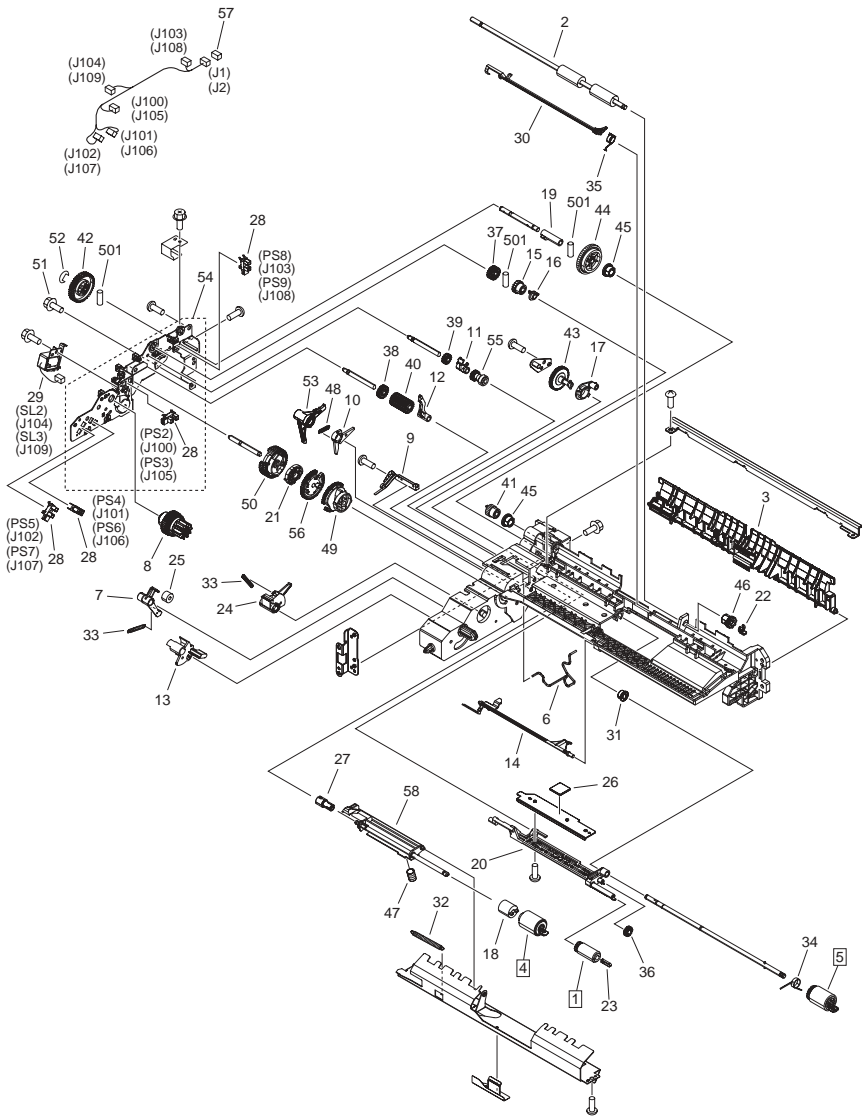


FIGURE & KEY NO.	PARTS NUMBER	R A N K	Q'TY	DESCRIPTION	SERIAL NUMBER/ REMARKS	S V C
Fig.H45	FM4-2526-000		2	PAPER PICK-UP ASSEMBLY, LARGE	CST. Feeding Unit-AE1 CN	
1	FC7-9381-000		1	ROLLER, PAPER PICK-UP	[DP]	
2	FM3-4150-000		1	ROLLER, VERTICAL PATH		
3	FL2-8282-000		1	GUIDE, VERTICAL PATH		
4	FC6-6661-000		1	ROLLER, SEPARATION	[DP]	
5	FC7-9502-000		1	ROLLER, FEED/SEPARATION	[DP]	
6	FB6-3388-000		1	ROD, SEPARATION ROLLER RELEASE		
7	FB6-3389-000		1	CLAW, PICK-UP		
8	FB6-3391-000		1	GEAR, RATCHET		
9	FB6-3392-020		1	SPRING, LEAF		
10	FC9-7253-000		1	ARM, LIFTING		
11	FB6-3395-000		1	ARM, PAPER FEED SHAFT		
12	FB6-3396-010		1	LOCK, PICK-UP		
13	FB6-3397-000		1	FLAG, PAPER SENSOR		
14	FB6-3398-000		1	FLAG, PAPER DETECT SENSOR		
15	FB6-3402-000		1	GEAR, RATCHET		
16	FB6-3403-000		1	COUPLING, FEED SHAFT STOP		
17	FB6-3404-000		1	COUPLING, SEPARATION SHAFT		
18	FB6-3410-000		1	LIMITER, TORQUE		
19	FB6-3413-000		1	COLLAR, PAPER PICK-UP SHAFT		
20	FB6-3380-020		1	HOLDER, PICK-UP ROLLER		
21	FB6-7078-000		1	CAM, LOCK		
22	FC6-9867-000		1	RING, RETAINING		
23	FC7-5845-000		1	STOPPER, ROLLER		
24	FC8-1178-000		1	CLAW, PAPER PICK-UP		
25	FC8-1202-000		1	DAMPER		
26	FC8-1205-000		1	PAD, PAPER PICK-UP HOLDER		
27	FC9-4290-000		1	JOINT, RETARD		
28	FK2-0149-000		4	PHOTO-INTERRUPTER, TLP1252(C6)	PS2,PS3,PS4,PS5,PS6,P S7,PS8,PS9	
29	FK2-0408-000		1	SOLENOID	SL2,SL3	
30	FL2-6580-000		1	FLAG, REGISTRATION SENSOR		

FIGURE & KEY NO.	PARTS NUMBER	R A N K	Q'TY	DESCRIPTION	SERIAL NUMBER/ REMARKS	S V C
31	FS5-1943-009		1	BUSHING		
32	FU7-5378-000		1	SPRING, TENSION		
33	FS7-2800-000		2	SPRING, TENSION		
34	FS7-2801-000		1	SPRING, TORSION		
35	FS7-2803-000		1	SPRING, TORSION		
36	FU3-0280-000		1	GEAR, 15T		
37	FU3-0282-000		1	GEAR, 21T		
38	FU3-0283-000		1	GEAR, 21T		
39	FU3-0284-000		1	GEAR, 16T		
40	FU3-0288-000		1	GEAR, 21T		
41	FU3-0289-000		1	GEAR, 14T		
42	FU3-0347-000		1	GEAR, 41T		
43	FU3-0349-000		1	GEAR, 41T		
44	FU3-0350-000		1	GEAR, 41T/41T		
45	FU5-1033-000		2	BUSHING		
46	FU5-1763-000		1	BUSHING		
47	FU6-2684-000		1	SPRING, COMPRESSION		
48	FU6-2784-000		1	SPRING, TENSION		
49	FU7-0445-000		1	GEAR, 42T		
50	FU7-0848-000		1	GEAR, 51T		
51	XA9-0656-000		1	SCREW,RS,M3X10		
52	XD9-0136-000		1	RING, E		
53	FM3-4146-000		1	PICK-UP ARM UNIT		
54	FM4-1201-000		1	PICK-UP DRIVE SIDE PLATE ASS'Y		
55	FU3-0352-000		1	GEAR, 16T		
56	FF6-2397-000		1	GEAR, 46T		
57	VS1-7177-002		1	CONNECTOR, SNAP TIGHT, BK		
58	FM4-2525-000		1	HOLDER, SEPARATION ROLLER		
501	XD3-2200-122		3	PIN, DOWEL		

FIGURE H90 PEDESTAL CONTROLLER PCB ASS'Y (Cassette Module-W1)

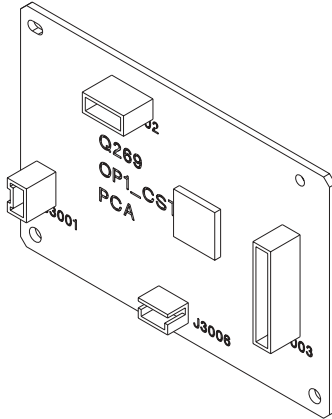


FIGURE & KEY NO.	PARTS NUMBER	RANK	QTY	DESCRIPTION	SERIAL NUMBER/REMARKS	SVC
Fig.H90	FM4-2531-000		1	PEDESTAL CONTROLLER PCB ASS'Y	Cassette Module-W1	
IC	FK2-1773-000		1	IC,TC200GO2EFG-1031,GATE ARRAY	IC7	

FIGURE H91
CST. PEDESTAL CONT. PCB ASS'Y (CST. Feeding Unit-AE1)

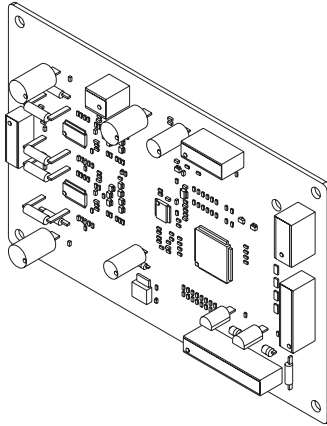


FIGURE & KEY NO.	PARTS NUMBER	RANK	QTY	DESCRIPTION	SERIAL NUMBER/REMARKS	S V C
Fig.H91	FM4-1202-000		1	CST. PEDESTAL CONT. PCB ASS'Y	CST. Feeding Unit-AE1	
IC	FK2-1773-000		1	IC.TC200GO2EFG-1031,GATE ARRAY	IC7	

FIGURE ZZA

MECHANICAL STANDARD PARTS (HOW TO USE)

Mechanical standard parts

機械標準部品

About a mechanical standard parts

A Mechanical standard parts is a mechanical part which not parts peculiar to a product. They are parts which are common to a Canon product and are used, such as a screw and a washer. The Fig No. and parts number of the mechanical standard parts are not listed in the product parts catalog. Refer to the parts catalog of mechanical standard parts when checking the parts number for screw or washer etc. and identify them by part shape or size.

機械標準部品とは

機械標準部品とは、製品特有の部品ではなく、ねじやワッシャなどキヤノン製品共通で使用されている機械部品（メカ部品）のことです。
製品のパーツカタログには、機械標準部品のFig No.や部品番号は記載しておりません。
ねじや、ワッシャ等の部品番号を調べるときは、機械標準部品のパーツカタログを参照し、部品の形状や大きさから判断し、使用している部品を調べてください。

Material and surface treatment of a mechanical standard parts

Material and surface treatment of mechanical standard parts are assigned commonly for each part. Refer to the Table 1 for the parts which material and surface treatment are assigned as numbers.

機械標準部品の材料および表面処理

機械標準部品の材料および表面処理については、各種部品共通で決められています。
材料および表面処理が番号で決められている部品については、表1を参照してください。

Table 1 Material and Surface treatment
表1 材料および表面処理

No. 番号	Material 材料	Surface treatment 表面処理	Color 色
1	Stainless steel ステンレス	Stainless steel black coloring (BC4) ステンレス黒着色(BC4)	Black 黒
2		not to be given なし	White 白
3	Brass 黄銅	Regular nickel plating (NL) 普通ニッケルメッキ(NL)	White 白
4		Black nickel plating (BN) 黒色ニッケルメッキ(BN)	Black 黒
5	Steel 鋼	White zinc trivalent chromate treating (ZC3) 白色亜鉛3価クロメート(ZC3)	White 白
6		Regular nickel chromium plating (NC) 普通ニッケルクロムメッキ(NC)	White 白
7		Regular nickel plating (NL) 普通ニッケルメッキ(NL)	White 白
8		Iron and steel phosphating (P1) 鉄鋼磷酸塩処理(P1)	Black 黒
9		Black zinc trivalent chromate treating (BZ3) 黒色亜鉛3価クロメート(BZ3)	Black 黒

FIGURE ZZB MECHANICAL STANDARD PARTS (SCREWS)

1. Screws ねじ

How to read Parts Numbers
部品番号の見方

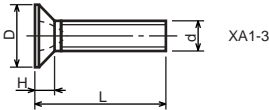
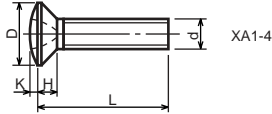
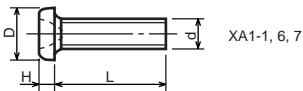
Screws
ねじ

XB1-2400-609

Type No.
類別番号
Normal designation (d)
ねじの呼び(d)
Length (L)
ねじの長さ(L)
Material and Surface treatment
材料および表面処理

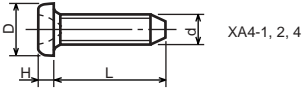
XB1-2 expresses Binding head machine screw.
XB1-2は、バインドねじを表す
40 expresses M4.0.
40は、M4.0を表す
0-60 expresses a length of 6.0mm.
0-60は、6.0mmの長さを表す
9 expresses Steel (Black zinc trivalent chromate
treating) from Table 1.
9は、表1より鋼(黒色亜鉛3価クロメート)を表す

1-1. Cross Recessed Head Screws for Precision Equipments 精密機器用十字穴付き小ねじ

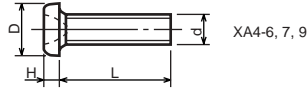


Type No. 類別番号	Type 類別	Head size (mm) 頭部寸法 (mm)							
		M1.4	M1.6	M1.7	M2	M2.5	M2.6		
XA1-1	Pan head Class 1 なべ1種	D	XA1-1	2	2.4	2.5	3	3.8	4
		H	XA1-1	0.5	0.55	0.5	0.6	0.9	0.8
XA1-3	Countersunk head Class 1 さら1種	D	XA1-3	2	2.4	2.5	3	3.8	4
		H	XA1-3	0.48	0.55	0.58	0.73	0.85	0.93
XA1-4	Oval countersunk head Class 1 丸さら1種	D	XA1-4	2	2.4	2.5	3	3.8	4
		H + K	XA1-4	0.68	0.8	0.88	1	1.25	1.3
XA1-6	Pan head Class 3 なべ3種	D	XA1-6	2.5	2.8	3	3.5	4.3	4.5
		H	XA1-6	0.8	0.85	0.9	1	1.3	1.2
XA1-7	Pan head Class 2 なべ2種	D	XA1-7	2.5	2.8	3	3.5	4.3	4.5
		H	XA1-7	0.5	0.55	0.5	0.6	0.9	0.8

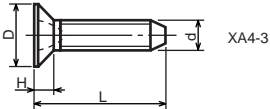
1-2. Precision Tapping Screws
精密用タッピンねじ



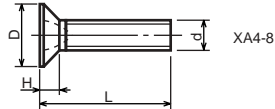
XA4-1, 2, 4



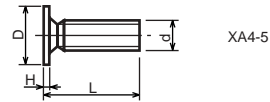
XA4-6, 7, 9



XA4-3



XA4-8



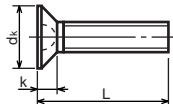
XA4-5

Type No. 類別番号	Type 類別	Head size (mm) 頭部寸法 (mm)						
		M1.4	M1.6	M1.7	M2	M2.5	M2.6	
XA4-1	With tapered end pan head Class 1 絞りなべ1種	D XA4-1	2	2.4	2.5	3	3.8	4
		H XA4-1	0.5	0.55	0.5	0.6	0.9	0.8
XA4-2	With tapered end pan head Class 3 絞りなべ3種	D XA4-2	2.5	2.8	3	3.5	4.3	4.5
		H XA4-2	0.8	0.85	0.9	1	1.3	1.2
XA4-3	With tapered end countersunk head 絞り-さら	D XA4-3	2	2.4	2.5	3	3.8	4
		H XA4-3	0.48	0.55	0.58	0.73	0.85	0.93
XA4-4	With tapered end pan head Class 2 絞りなべ2種	D XA4-4	2.5	2.8	3	3.5	4.3	4.5
		H XA4-4	0.5	0.55	0.5	0.6	0.9	0.8
XA4-5	With parallel end ultra thin head ストレート-超薄頭	D XA4-5	2.5	2.8	3	-	-	-
		H XA4-5	0.2	0.2	0.2	-	-	-
XA4-6	With parallel end pan head Class 1 ストレートなべ1種	D XA4-6	2	2.4	2.5	3	3.8	4
		H XA4-6	0.5	0.55	0.5	0.6	0.9	0.8
XA4-7	With parallel end pan head Class 3 ストレートなべ3種	D XA4-7	2.5	2.8	3	3.5	4.3	4.5
		H XA4-7	0.8	0.85	0.9	1	1.3	1.2
XA4-8	With parallel end countersunk head ストレート-さら	D XA4-8	2	2.4	2.5	3	3.8	4
		H XA4-8	0.48	0.55	0.58	0.73	0.85	0.93
XA4-9	With parallel end pan head Class 2 ストレートなべ2種	D XA4-9	2.5	2.8	3	3.5	4.3	4.5
		H XA4-9	0.5	0.55	0.5	0.6	0.9	0.8

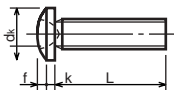
1-3. Cross Recessed Head Screws
 一般用十字穴付き小ねじ



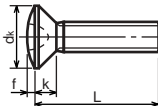
XB1-1



XB1-3



XB1-2

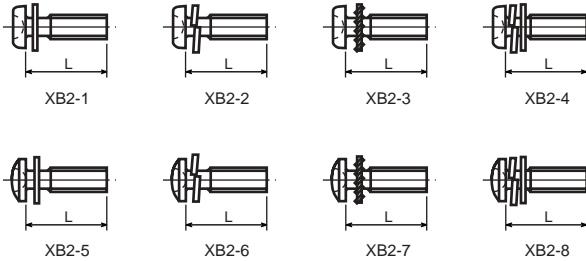


XB1-4

Type No. 類別番号	Type 類別
XB1-1	Pan head なべ
XB1-2	Binding head バインド
XB1-3	Countersunk head さら
XB1-4	Oval countersunk head 丸さら

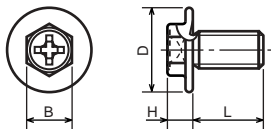
		Head size (mm) 頭部寸法 (mm)					
		M2	M2.5	M2.6	M3	M4	M5
dk	XB1-1	3.5	4.5	4.5	5.5	7	9
k	XB1-1	1.3	1.7	1.7	2	2.6	3.3
dk	XB1-2	4.3	5.3	5.5	6.3	8.3	10.3
k+f	XB1-2	1.2	1.5	1.6	1.9	2.5	3.1
dk	XB1-3	4	5	-	6	8	10
k	XB1-3	1.2	1.45	-	1.75	2.3	2.8
dk	XB1-4	4	5	-	6	8	10
k+f	XB1-4	1.6	2	-	2.45	3.2	4
Screw part length ねじ部長さ b		8	12	12	12	16	20

1-4. Cross Recessed Head Screws with Captive Washer
座金組込み十字穴付き小ねじ



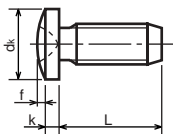
Type No. 類別番号	Type 類別
XB2-1	Pan head + Plain washer (circular bright) なべねじ+平座金
XB2-2	Pan head + Spring washer なべねじ+ばね座金
XB2-3	Pan head + Toothed lock washer なべねじ+歯付座金
XB2-4	Pan head + Spring washer and plain washer (circular bright) なべねじ+(ばね+平)座金
XB2-5	Binding head + Plain washer (circular bright) バインドねじ+平座金
XB2-6	Binding head + Spring washer バインドねじ+ばね座金
XB2-7	Binding head + Toothed lock washer バインドねじ+歯付座金
XB2-8	Binding head + Spring washer and plain washer (circular bright) バインドねじ+(ばね+平)座金

1-5. Hexagon Head Tapping Screws for Metallic Materials
 金属用六角タッピンねじ



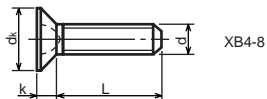
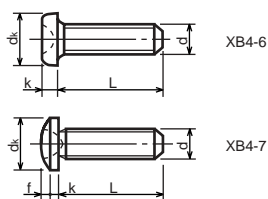
Type No. 類別番号	Type 類別	Head size (mm) 頭部寸法 (mm)	
		M3	M4
XB3-6	For metallic materials 金属用タッピン	D	8 10
		B	5.5 5.5
XB3-7	For metallic materials with clawed 金属用タッピン-つめ付き	H XB3-6	3.1 3.1
		H XB3-7	3.2 3.2

1-6. Special Tapping Screws
 特殊タッピンねじ



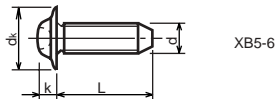
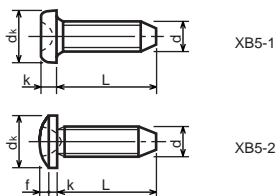
Type No. 類別番号	Type 類別	Head size (mm) 頭部寸法 (mm)	
		M3	M4
XB4-5	Binding head バインド	dk	6.3 8.3
		k	1.3 1.7
		k+f	1.9 2.5

1-7. General Head Tapping Screws
一般用タッピンねじ



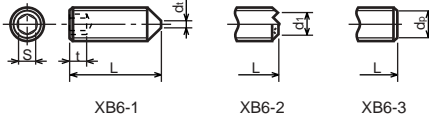
Type No. 類別番号	Type 類別	Head size (mm) 頭部寸法 (mm)						
		M2	M2.5	M2.6	M3	M4	M5	
XB4-6	Pan head なべ	d_k XB4-6	3.5	4.5	4.5	5.5	7	9
		k XB4-6	1.3	1.7	1.7	2	2.6	3.3
XB4-7	Binding head バインド	d_k XB4-7	4.3	5.3	5.5	6.3	8.3	10.3
		$k+f$ XB4-7	1.2	1.5	1.6	1.9	2.5	3.1
XB4-8	Countersunk head さら	d_k XB4-8	4	5	5.2	6	8	10
		k XB4-8	1.2	1.45	1.5	1.75	2.3	2.8

1-8. Tapping Screws for Metallic Materials
金属用タッピンねじ



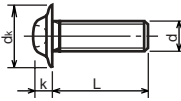
Type No. 類別番号	Type 類別	Head size (mm) 頭部寸法 (mm)					
		M2.5	M2.6	M3	M4	M5	
XB5-1	Pan head なべ	d_k XB5-1	4.5	4.5	5.5	7	9
		k XB5-1	1.7	1.7	2	2.6	3.3
XB5-2	Binding head バインド	d_k XB5-2	5.5	5.5	6.3	8.3	10.3
		$k+f$ XB5-2	1.6	1.6	1.9	2.5	3.1
XB5-6	Flanged pan head つば付きなべ	d_k XB5-6	6.5	6.5	8	10	12
		k XB5-6	2.1	2.1	1.75	3.2	4

1-9. Hexagon Socket Set Screws
六角穴付止めねじ



Type No. 類別番号	Type 類別	Head size (mm) 頭部寸法 (mm)							
		M1.6 M1.7	M2	M2.5 M2.6	M3	M5	M5	M6	
XB6-1	Cone point とがり先	S	0.7	0.9	1.3	1.5	2	2.5	3
		t	1.5	1.7	2	2	2.5	3	3.5
		$d_{t \max}$ XB6-1	0.4	0.5	0.65	0.75	1	1.25	1.5
		$d_{l \max}$ XB6-2	-	1.2	1.5	1.7	2.2	2.8	3.3
		$d_{l \min}$ XB6-2	-	1	1.2	1.4	1.9	2.4	2.9
XB6-2	Double point ダブルポイント	$d_{p \max}$ XB6-3	0.8	1	1.5	2	2.5	3.5	4
XB6-3	Flat point 平先	$d_{p \min}$ XB6-3	0.55	0.75	1.25	1.75	2.25	3.2	3.7

1-10. Flanged Pan Head Machine Screws
つば付きなべ小ねじ



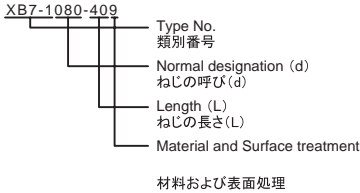
Type No. 類別番号	Type 類別	Head size (mm) 頭部寸法 (mm)					
		M2	M2.5 M2.6	M3	M5	M5	
XB6-7	Flanged pan head つば付きなべ	d_k	5	6.5	8	10	12
		k	1.7	2.1	2.5	3.2	4

FIGURE ZZC MECHANICAL STANDARD PARTS (BOLTS)

2. Bolts (Socket head cap screw) ボルト

How to read Parts Numbers
部品番号の見方

Bolt (Socket head cap screw)
ボルト



XB7-1 expresses Hexagon socket head cap screws.
XB7-1は、六角穴付きボルトを表す

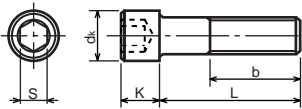
080 expresses M8.0.
080は、M8.0を表す

40 expresses a length of 40mm.
40は、40mmの長さを表す

9 expresses Steel (Black zinc trivalent chromate
treating) from Table 1.

9は、表1より鋼(黒色亜鉛3価クロメート)を表す

2-1. Hexagon socket head cap screws 六角穴付きボルト



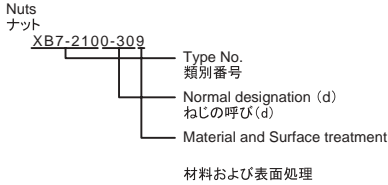
Type No. 類別番号	Type 類別
XB7-1	Hexagon socket head cap screws 六角穴付きボルト

	Head size (mm) 頭部寸法 (mm)						
	M3	M4	M5	M6	M8	M10	M12
S	2.5	3	4	5	6	8	10
d_k	5.5	7	8.5	10	13	16	18
K	3	4	5	6	8	10	12
Screw part length b_{max} ねじ部長さ b_{max}	18	20	22	24	28	32	36

FIGURE ZZD MECHANICAL STANDARD PARTS (NUTS)

3. Nuts ナット

How to read Parts Numbers
部品番号の見方



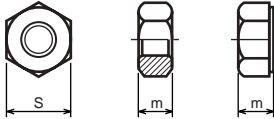
XB7-210 expresses Hexagon nut class 1.
XB7-210は、六角ナット1種を表す

0-30 expresses M3.0.
0-30は、M3.0を表す

9 expresses Steel (Black zinc trivalent chromate
treating) from Table 1.

9は、表1より鋼(黒色亜鉛3価クロメート)を表す

3-1. Hexagon Nuts and Hexagon Thin Nuts 六角ナット



Type No. 類別番号	Type 類別
XB7-210	Hexagon nut Class 1 六角ナット-1種
XB7-220	Hexagon nut Class 3 六角ナット-3種
XB7-230	Hexagon nut Style 1 double chamfered 六角ナット-スタイル1-両面とり
XB7-231	Hexagon nut Style 1 washer faced 六角ナット-スタイル1-座付き
XB7-240	Hexagon nut Style 2 double chamfered 六角ナット-スタイル2-両面とり
XB7-241	Hexagon nut Style 2 washer faced 六角ナット-スタイル2-座付き
XB7-250	Hexagon nut 六角ナット
XB7-260	Hexagon thin nut double chamfered 六角低ナット-両面とり
XB7-270	Hexagon thin nut not chamfered 六角低ナット-面とり無し

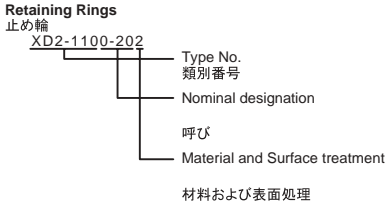
	Head size (mm) 頭部寸法 (mm)						
	M2	M2.5	M3	M4	M5	M6	M8
S	4	5	5.5	7	8	10	13
m XB7-210	1.6	2	2.4	3.2	4	5	6.5
m XB7-220	1.2	1.6	1.8	2.4	3.2	3.6	5
m XB7-230, 231	1.6	2	2.4	3.2	4.7	5.2	6.8
m XB7-240, 241	-	-	-	-	5.1	5.7	7.5
m XB7-250	-	-	-	-	5.6	6.1	7.9
m XB7-260	1.2	1.6	1.8	2.2	2.7	3.2	4
m XB7-270	1.2	1.6	1.8	2.2	2.7	3.2	4

FIGURE ZZE MECHANICAL STANDARD PARTS (RETAINING RINGS)

5. Retaining Rings

止め輪

How to read Parts Numbers
部品番号の見方



XD2-110 expresses retaining ring-E type (Type1).
XD2-110は、E形止め輪(1種)を表す

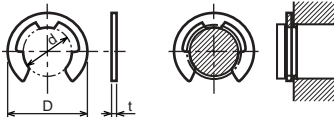
0-20 expresses a 020 of nominal designation.
(See Table 5)

0-20は、呼び020を表す(表5参照)

2 expresses Stainless steel (Surface treatment is not to be given) from Table 1.
2は、表1よりステンレス(表面処理なし)を表す

5-1. Retaining Rings - E type

E形止め輪

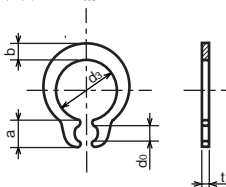


Type No. 類別番号	Type 類別
XD2-110	Retaining ring - E type (Type 1) E形止め輪(1種)
XD2-120	Retaining ring - E type (Type 2) E形止め輪(2種)

Table 5 表5

Type 種類	Nominal designation 呼び	d (mm)	D (mm)	t (mm)
Type 1 1種	007	0.65	2	0.2
	010	0.95	2.8	0.2
	013	1.25	3.3	0.3
	017	1.65	4.2	0.4
	020	1.95	4.6	0.5
	024	2.35	6	0.6
	028	2.74	6.5	0.6
	032	3.14	7.2	0.6
	037	3.64	8	0.7
	040	3.93	10	0.7
	042	4.13	10	0.7
	050	4.93	11	0.7
	058	5.73	12	0.7
	060	5.93	12.7	0.9
	064	6.32	13.5	0.9
	074	7.31	15	0.9
080	7.91	16.5	1	
Type 2 2種	008	0.8	2	0.2
	012	1.2	3	0.3
	015	1.5	4	0.4
	020	2	5	0.4
	025	2.5	6	0.4
	030	3	7	0.6
	040	4	9	0.6
	050	5	11	0.6
	060	6	12	0.8
	070	7	14	0.8
	080	8	16	0.8
	090	9	18	0.8
	100	10	20	1

5-2. Grip Rings
グリップ止め輪

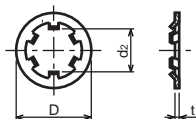


Type No. 類別番号	Type 類別
XD2-210	Grip ring グリップ止め輪

Table 5 表5

Nominal designation 呼び	d ₃ (mm)	t (mm)	b (mm)	a (mm)	d ₀ (mm)
020	1.9	0.5	1	1.8	0.8
025	2.35	0.5	1.2	1.9	0.9
030	2.85	0.6	1.4	1.9	0.9
035	3.3	0.6	1.6	2	0.9
040	3.8	0.8	1.8	2.8	1.2
045	4.25	0.8	2	2.9	1.3
050	4.75	0.8	2.2	2.9	1.3
060	5.7	1	2.4	3.1	1.4
070	6.7	1	2.7	3.3	1.4
080	7.7	1	3	3.5	1.4
090	8.65	1.2	3.3	4.7	1.5
100	9.65	1.2	3.5	4.7	2

5-3. Toothed Retaining Rings
歯付き形止め輪



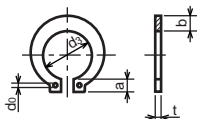
Type No. 類別番号	Type 類別
XD2-230	Toothed retaining ring 歯付き形止め輪

Table 5 表5

Nominal designation 呼び	d _z (mm)	D (mm)	t (mm)	No of teeth 歯数
015	1.4	5.2	0.25	3
020	1.9	6	0.25	3
024	2.3	6.4	0.25	3
030	2.8	8	0.25	4
040	3.8	9	0.25	4
050	4.8	10	0.25	5
060	5.8	11	0.25	5
080	7.8	13	0.25	5
100	9.8	15.4	0.25	6

5-4. Retaining Rings - C Type

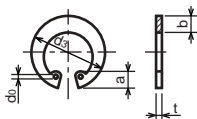
C形止め輪



Type No. 類別番号	Type 類別
XD2-310	Retaining ring - C type for shaft C形止め輪 軸用

Table 5 表5

Nominal designation 呼び	d ₃ (mm)	t (mm)	b (mm)	a (mm)	d ₀ (mm)
010	9.3	1	1.6	3	1.2
012	11.1	1	1.8	3.2	1.5
014	12.9	1	2	3.4	1.7
015	13.8	1	2.1	3.5	1.7
016	14.7	1	2.2	3.6	1.7
017	15.7	1	2.2	3.7	1.7
018	16.5	1.2	2.6	3.8	1.7
020	18.5	1.2	2.7	3.9	2
022	20.5	1.2	2.7	4.1	2
025	23.2	1.2	3.1	4.3	2
028	25.9	1.5	3.1	4.6	2
030	27.9	1.5	3.5	4.8	2
032	29.6	1.5	3.5	5	2.5
035	32.2	1.5	4	5.4	2.5



Type No. 類別番号	Type 類別
XD2-320	Retaining ring - C type for hole C形止め輪 穴用

Table 5 表5

Nominal designation 呼び	d ₃ (mm)	t (mm)	b (mm)	a (mm)	d ₀ (mm)
010	10.7	1	1.8	3.1	1.2
011	11.8	1	1.8	3.2	1.2
012	13	1	1.8	3.3	1.5
014	15.1	1	2	3.6	1.7
016	17.3	1	2	3.7	1.7
018	19.5	1	2.5	4	1.7
019	20.5	1	2.5	4	2
020	21.5	1	2.5	4	2
022	23.5	1	2.5	4.1	2
025	26.9	1.2	3	4.4	2
028	30.1	1.2	3	4.6	2
030	32.1	1.2	3	4.7	2
032	34.4	1.2	3.5	5.2	2.5
035	37.8	1.5	3.5	5.2	2.5
037	39.8	1.5	3.5	5.2	2.5
040	43.5	1.8	4	5.7	2.5
042	45.5	1.8	4	5.8	2.5
045	48.5	1.8	4.5	5.9	2.5
047	50.5	1.8	4.5	6.1	2.5
050	54.2	2	4.5	6.5	2.5
052	56.2	2	5.1	6.5	2.5
055	59.2	2	5.1	6.5	2.5
060	64.2	2	5.1	6.8	2.5
062	66.2	2	5.5	6.9	2.5
068	72.5	2.5	6	7.4	2.5
072	76.5	2.5	6.6	7.4	2.5
075	79.5	2.5	6.6	7.8	2.5
080	85.5	2.5	7	8	2.5
085	90.5	3	7	8	3
090	95.5	3	7.6	8.3	3
095	100.5	3	8	8.5	3

Prepared by
OIP Service Management Center
CANON INC.

Canon