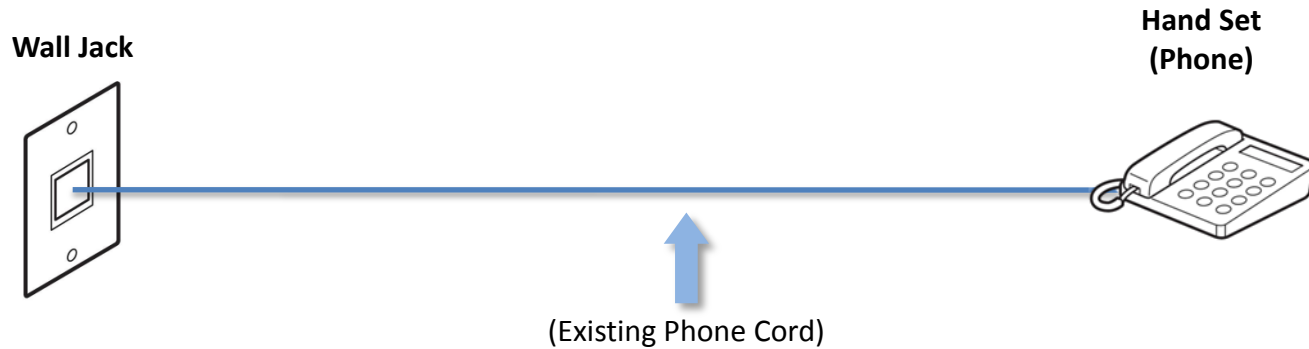


## Setting Up Your MX870 In Default Mode (Tel Priority Mode) Without An Answering Machine

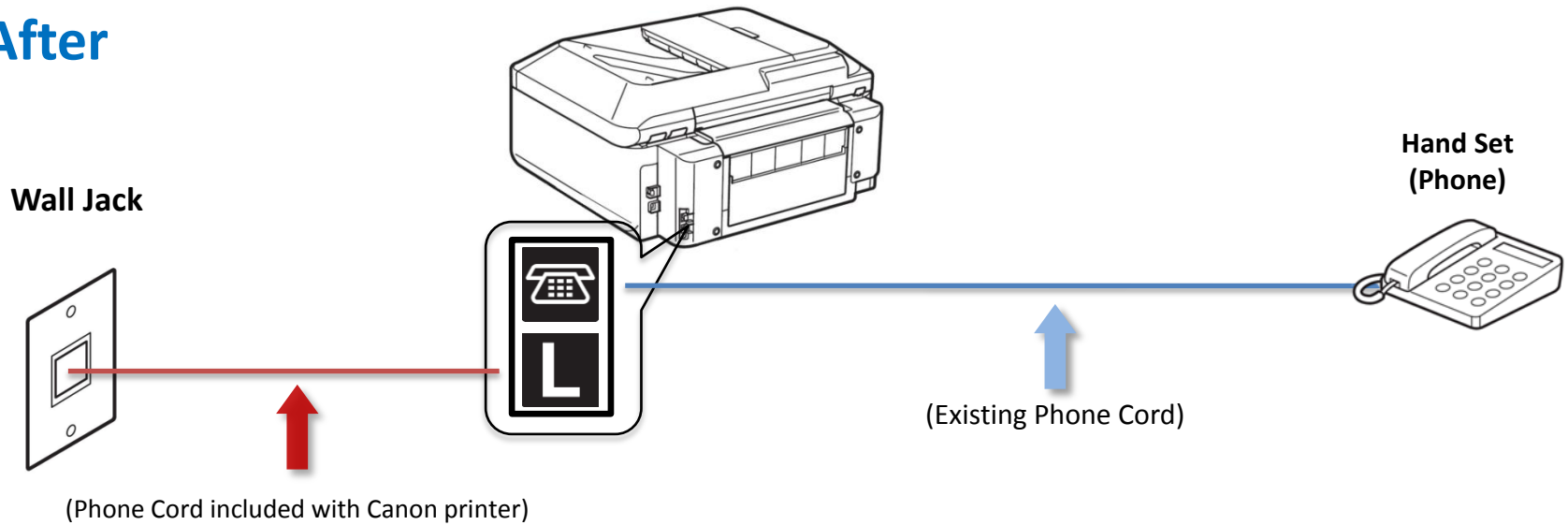
# Connecting The Phone Lines

# Fax to Phone Line Connection

**Before**

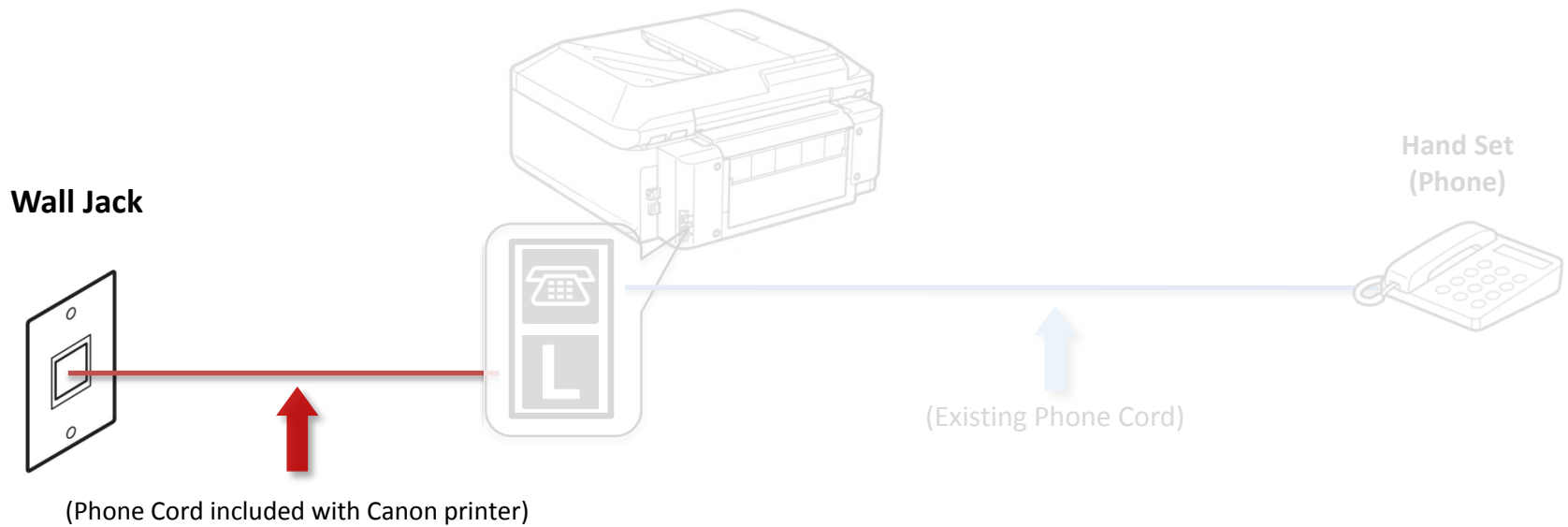


**After**



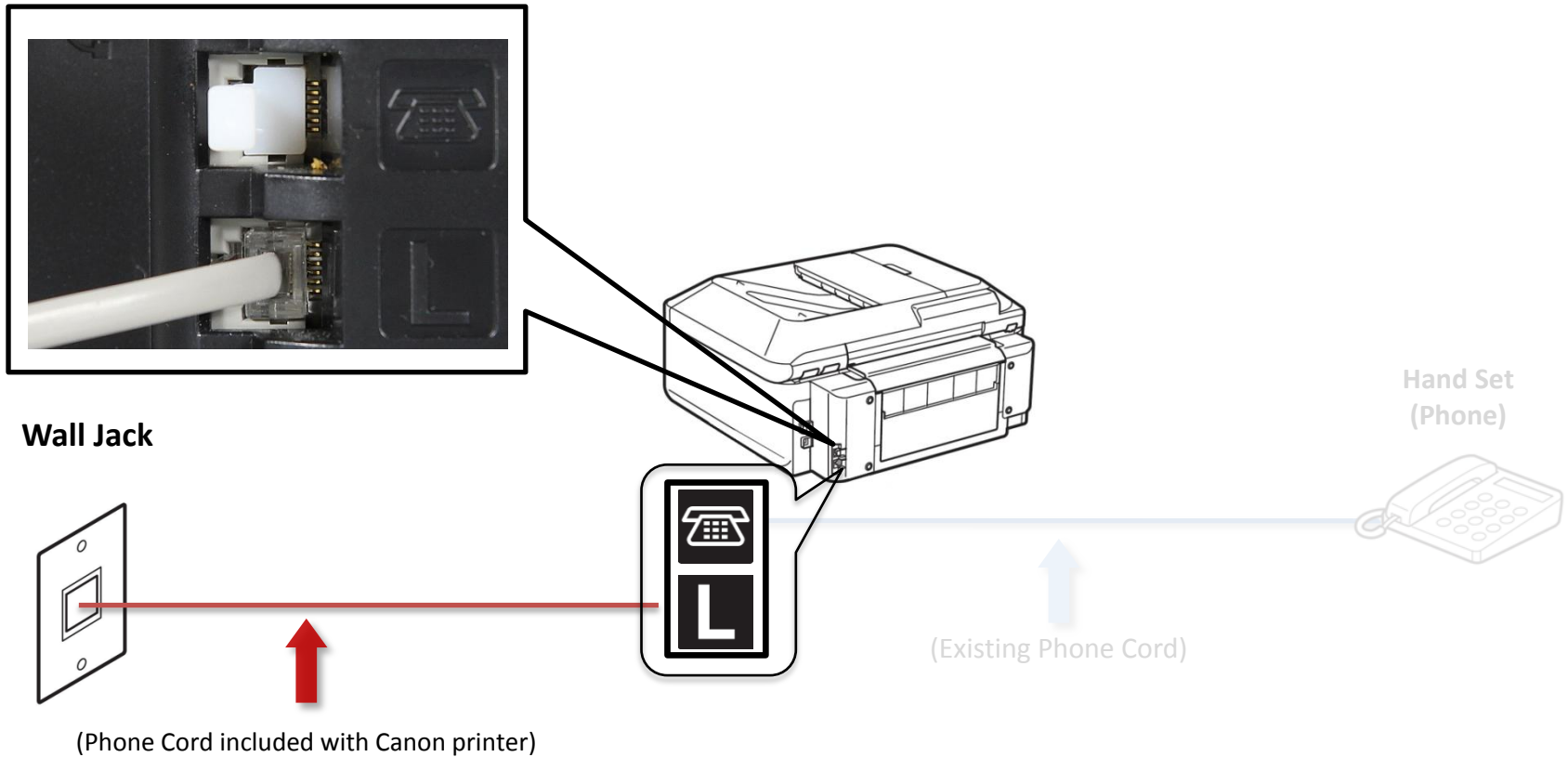
# Fax to Phone Line Connection

- Plug the provided phone cord into the wall jack



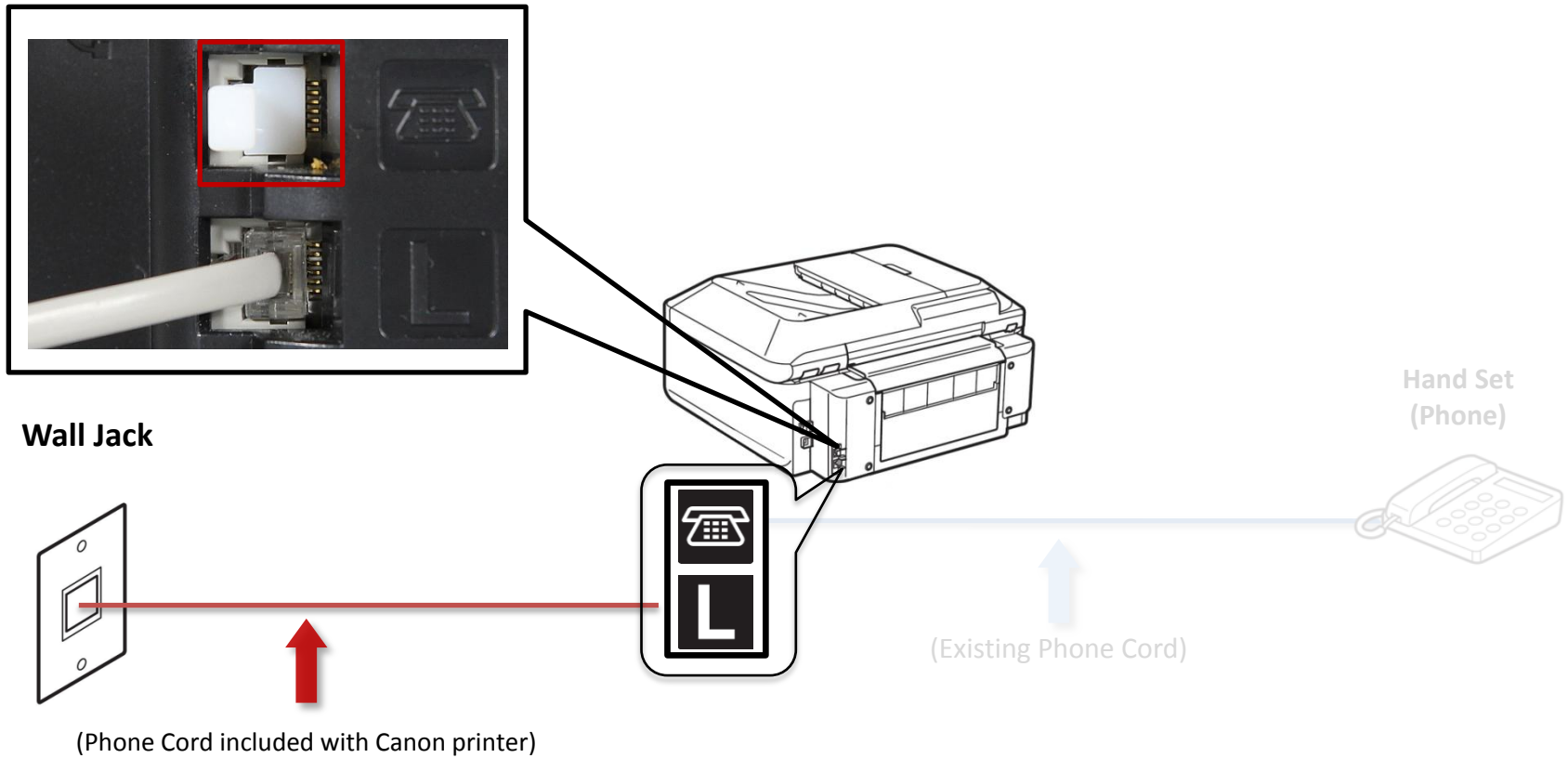
# Fax to Phone Line Connection

- Plug the provided phone cord into the “L” jack located on the rear of the multifunction



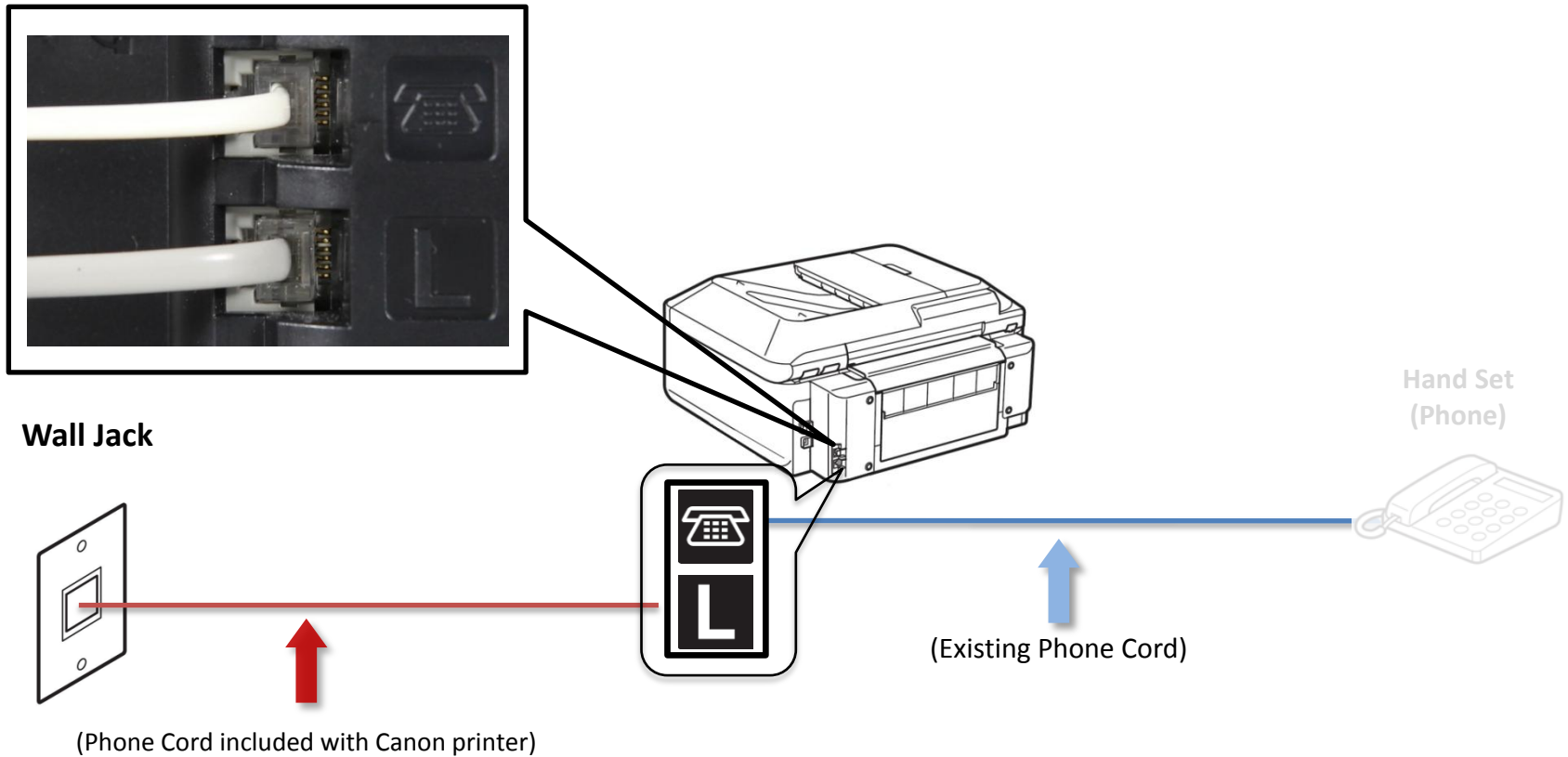
# Fax to Phone Line Connection

- Remove the white plug from the upper jack.



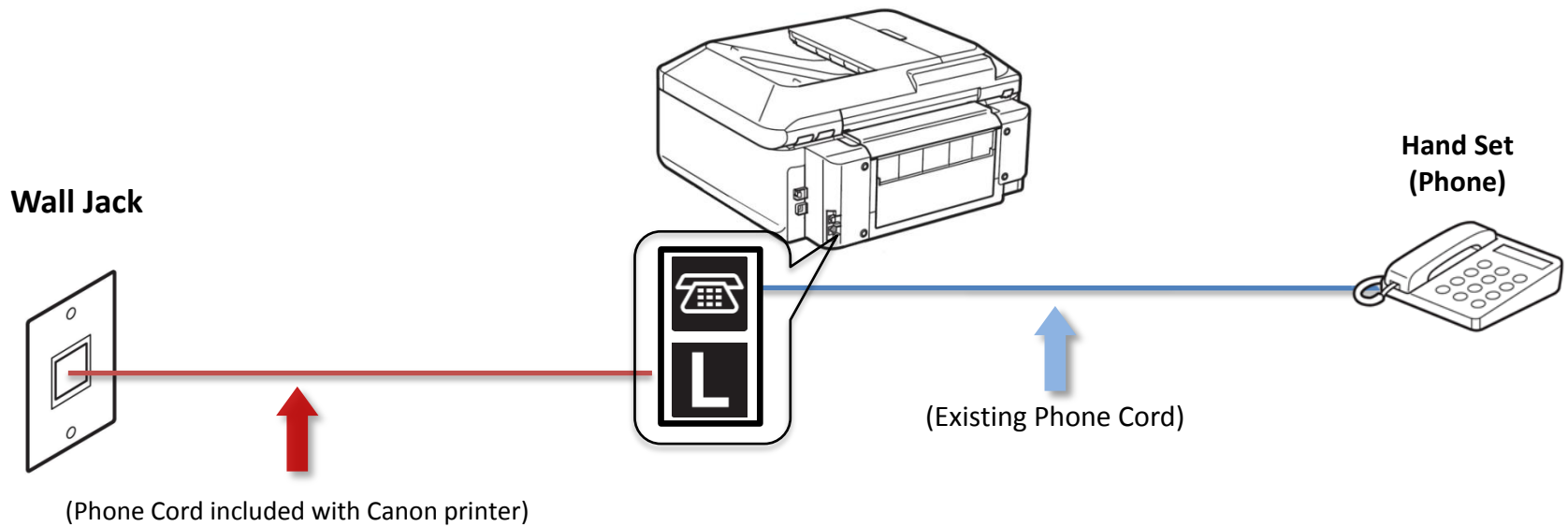
# Fax to Phone Line Connection

- Plug the second phone cord into the jack marked with an image of a “telephone” located on the rear of the multifunction.



# Fax to Phone Line Connection

- Plug the second phone cord into the phone

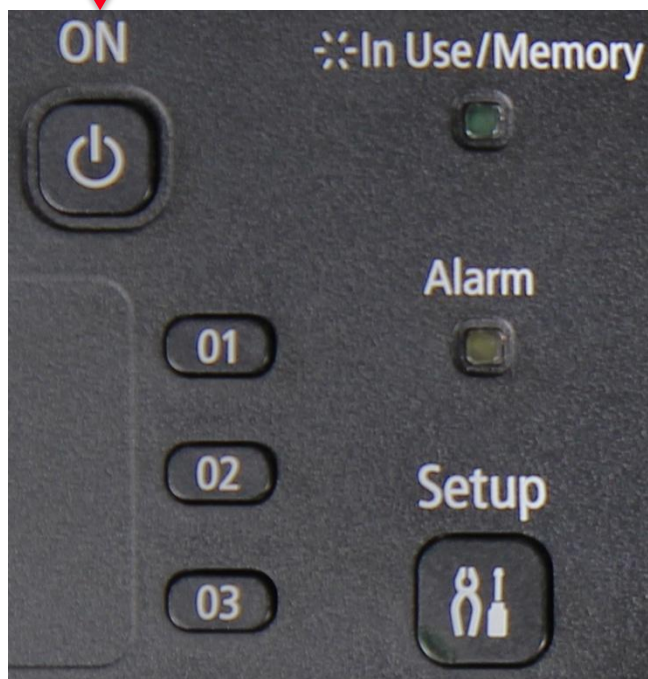




# Setting Up The Receive Mode

## Step 1

Turn on the MX870 by pressing the **ON** button.



## Step 2

Press the **FAX** button.



## Step 3

The fax standby screen will appear.



## Step 4

Press the center **FUNCTION** button.



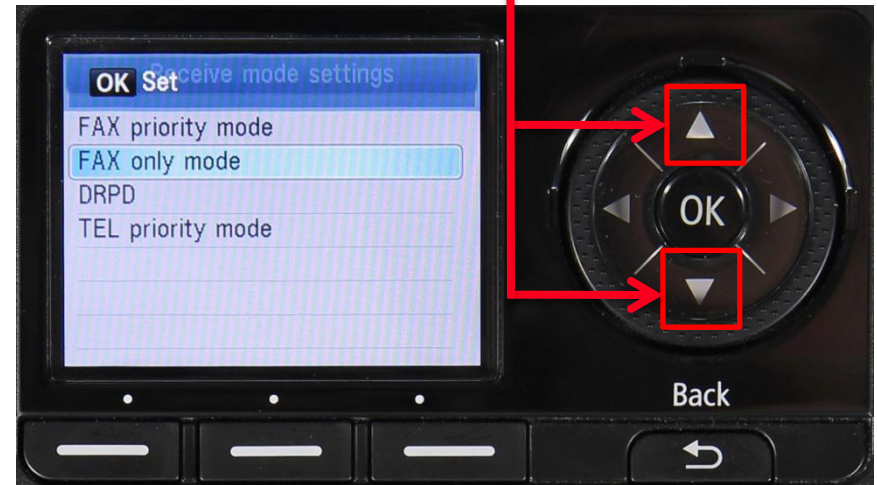
## Step 5

The Receive mode settings screen will appear.



## Step 6

Use the **UP** or **DOWN** button to select "TEL priority mode".



## Step 7

Ensure that “TEL priority mode” is highlighted.



## Step 8

Press the **OK** button.



## Step 9

Your MX870 is now set to Tel priority mode. Notice that the mode is listed on the fax standby screen.



# Receiving A Fax

To receive a fax:

- Pick up the handset on the phone connected to the MX870.
- Listen for fax tones.
- When the tones stop hang up the handset.
- The MX870 will receive the fax document.

**IMPORTANT:** In order to receive a fax, you must pick up the handset on a phone that is connected to the multifunction.

