



Setting Up Your MX452 In Default Mode (Tel Priority Mode) Without An Answering Machine



Fax Easy Setup

Click [Next](#) to step through this image-friendly version of **Fax Easy Setup**.

If you started **Fax Easy Setup**, on the fax machine's operation panel, and prefer to go through this image-friendly version...

Step 1

Press the FAX button at any screen to go to fax standby mode.



Step 2

Click [Next](#) to proceed through the setup.



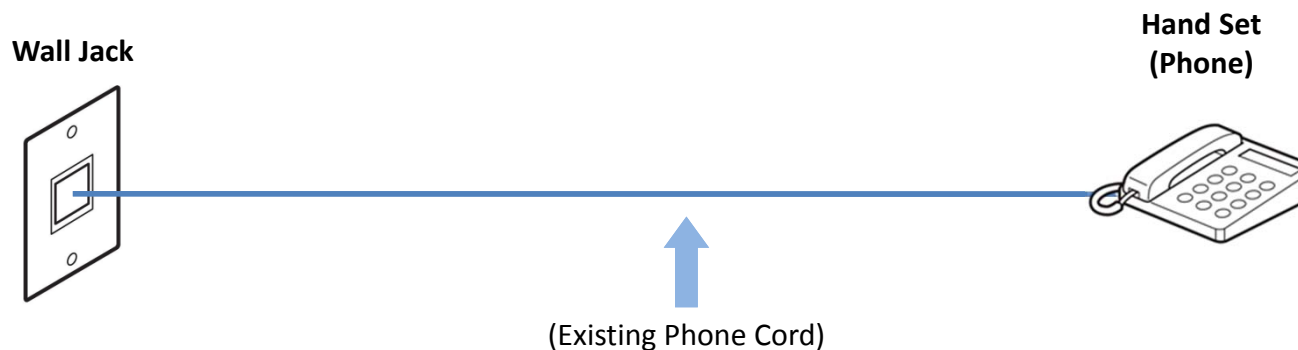


Connecting The Phone Lines

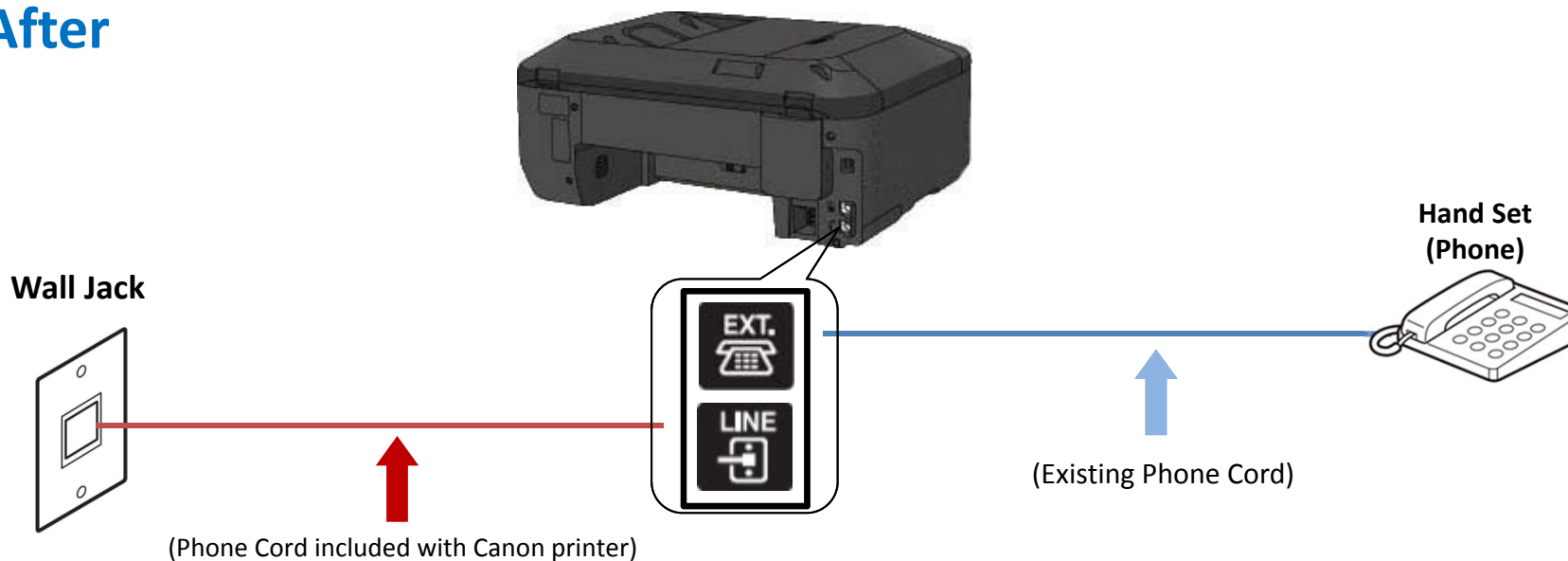


Fax to Phone Line Connection

Before



After

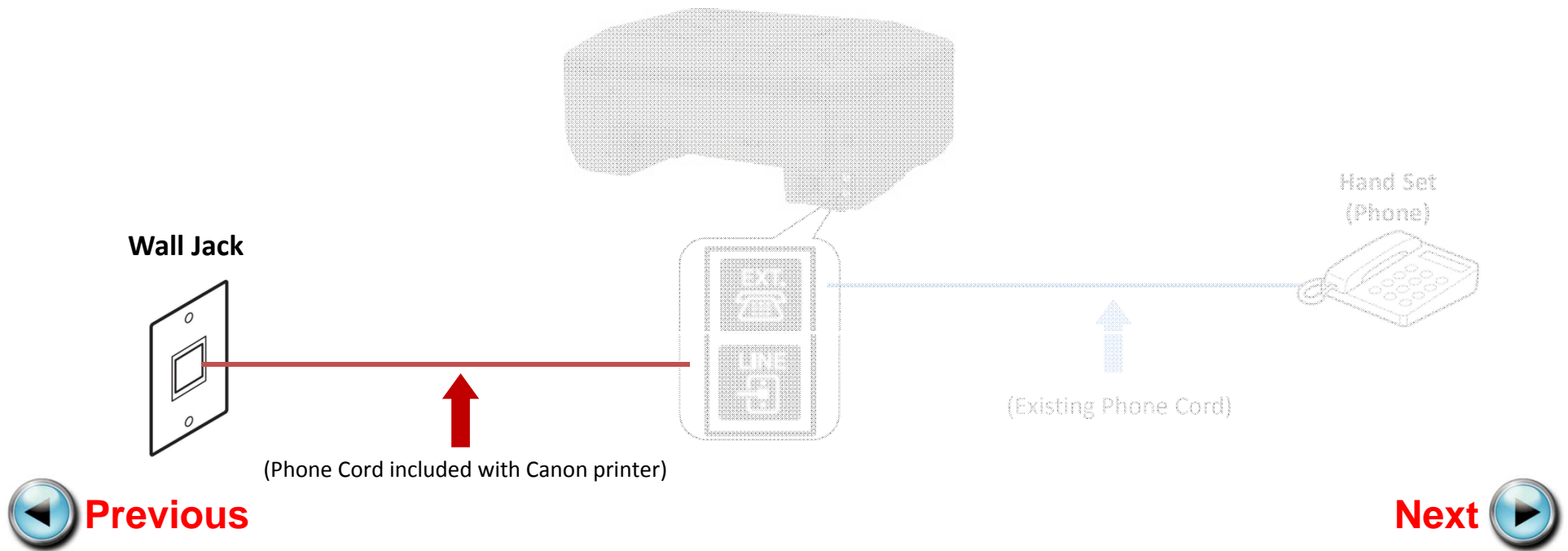


 **Previous**

Next 

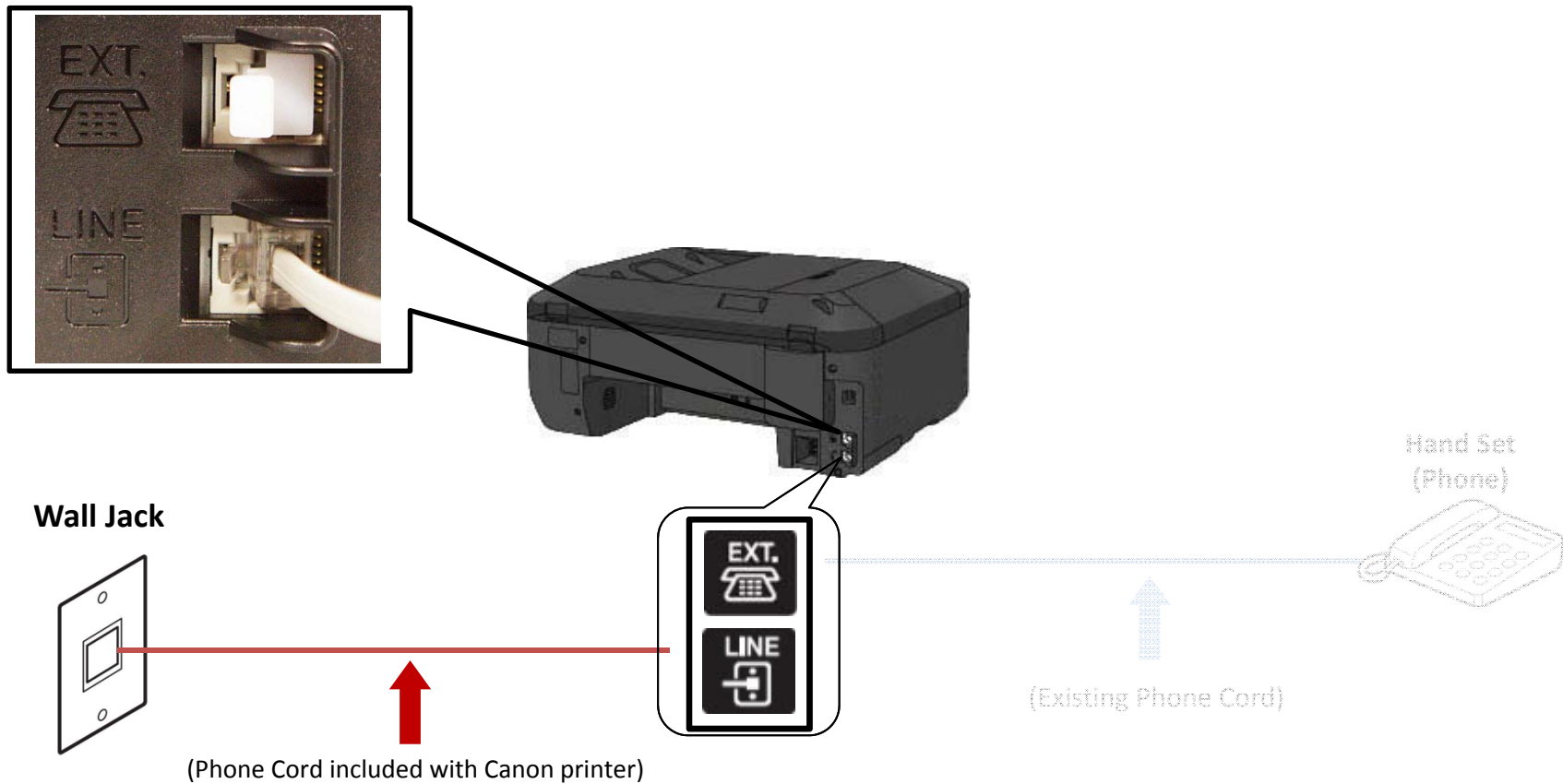
Fax to Phone Line Connection

- Plug the provided phone cord into the wall jack



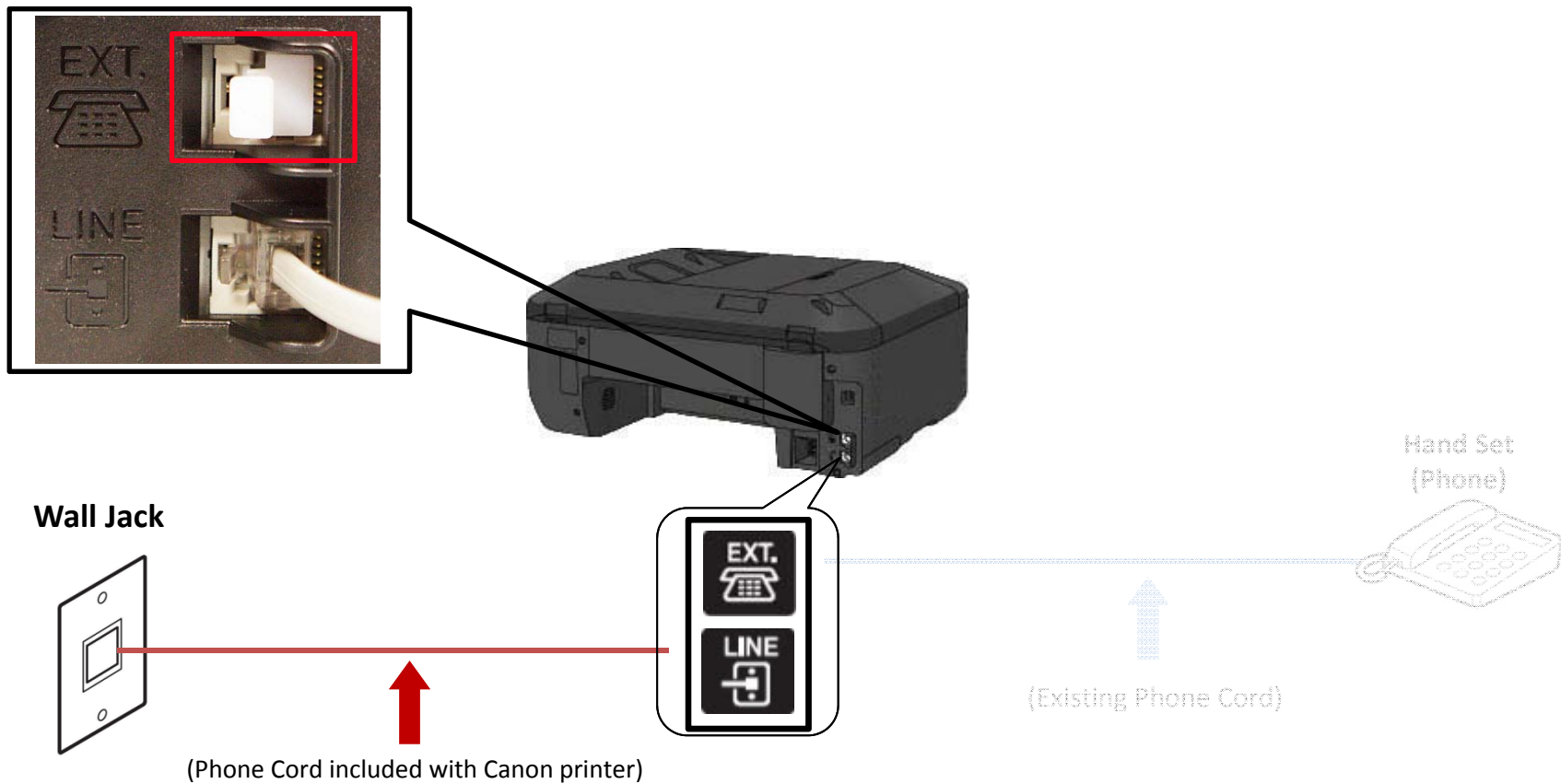
Fax to Phone Line Connection

- Plug the provided phone cord into the “LINE” jack located on the rear of the multifunction



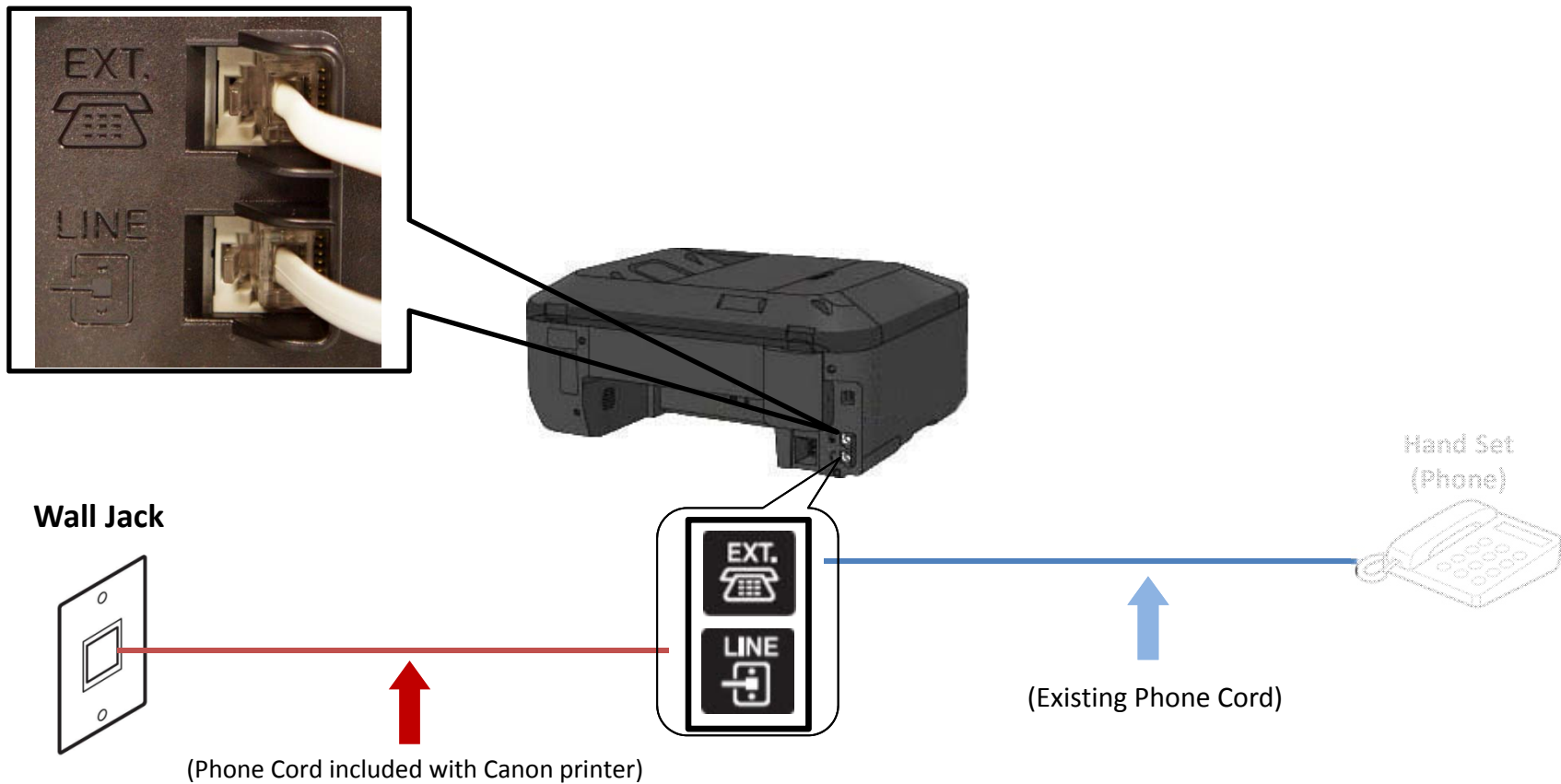
Fax to Phone Line Connection

- Remove the white plug from the upper jack labeled "EXT."



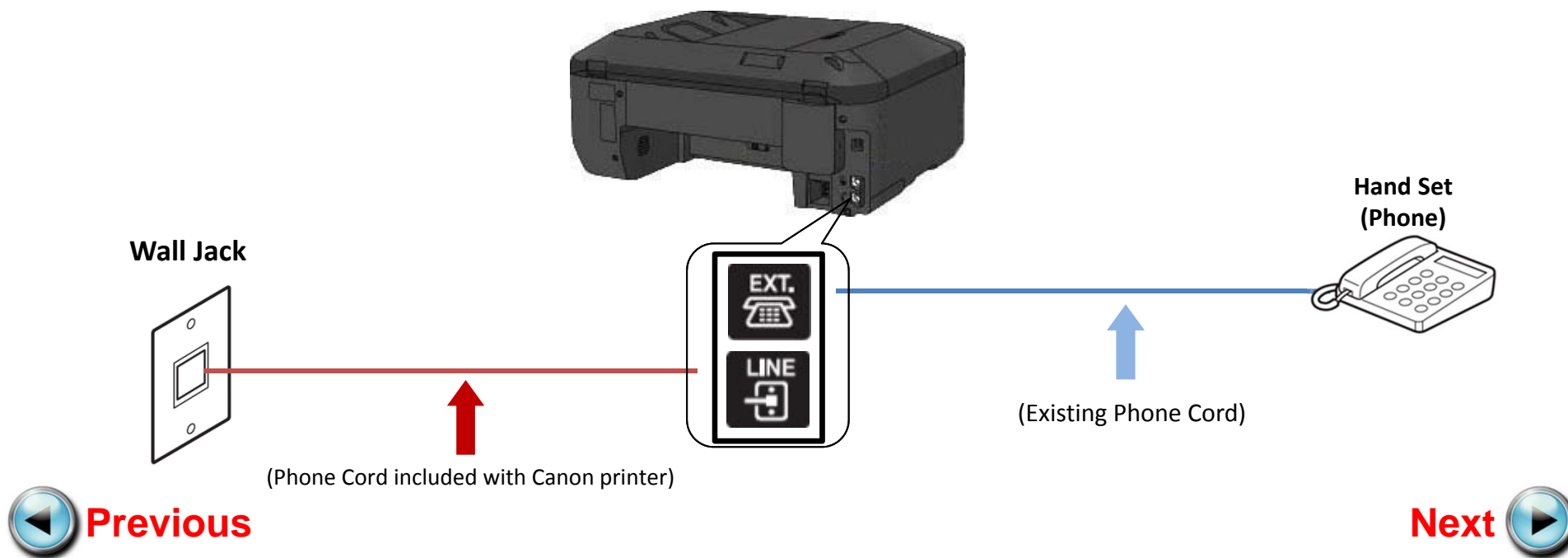
Fax to Phone Line Connection

- Plug the second phone cord into the “EXT.” jack located on the rear of the multifunction



Fax to Phone Line Connection

- Plug the second phone cord into the phone





Setting Up The Receive Mode



Step 1

Turn on the MX452 by pressing the **ON** button, if it is not powered on already.



Step 2

Press the **FAX** button.



Step 3

The fax standby screen will appear.



Step 4

Press the **Menu** button.



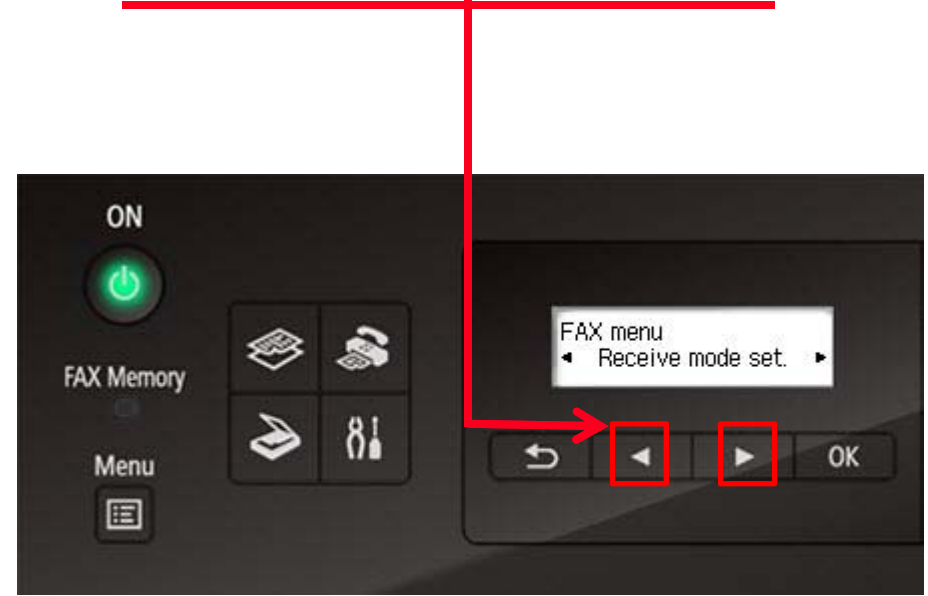
Step 5

The **FAX menu** screen will appear.



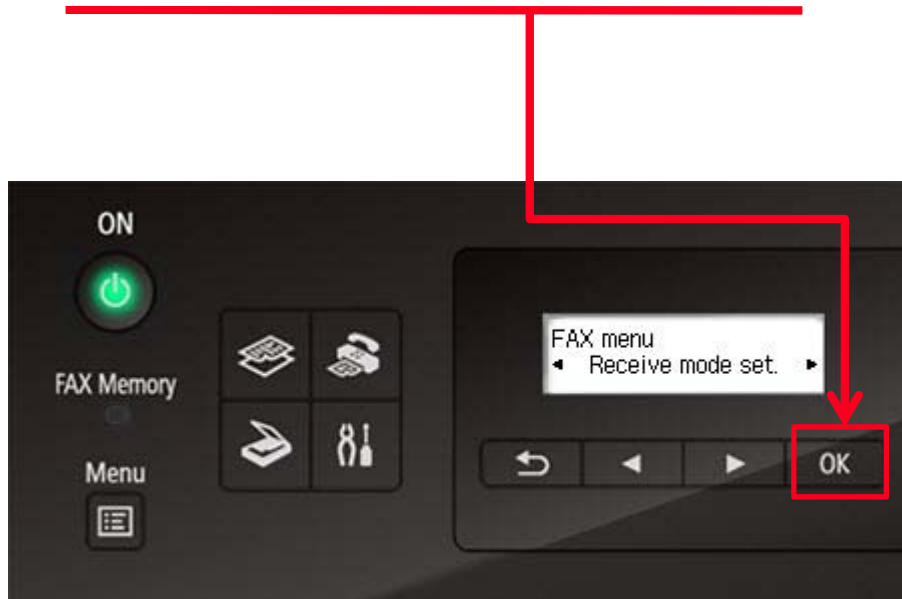
Step 6

Use the **LEFT** or **RIGHT** button to select "Receive mode set".



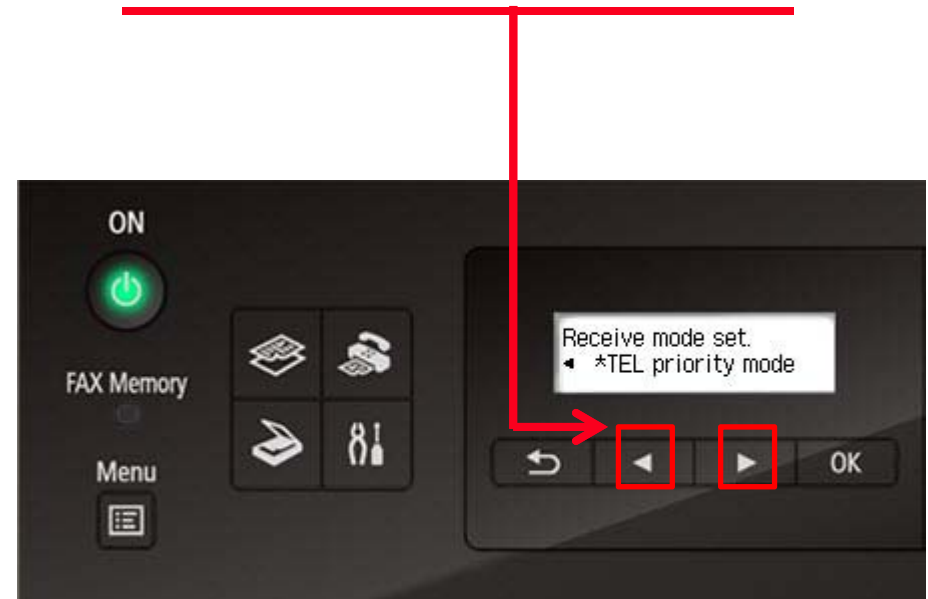
Step 7

Press the **OK** button.



Step 8

Use the **LEFT** or **RIGHT** button to select "TEL priority mode".



Step 9

Press the **OK** button.



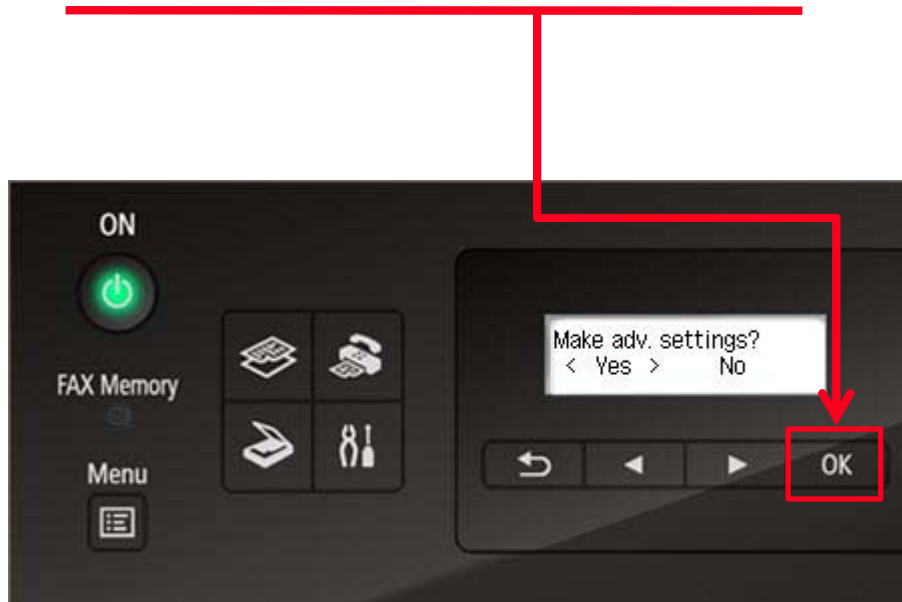
Step 10

Use the **LEFT** or **RIGHT** button to select "Yes" at **Make adv. settings** screen.



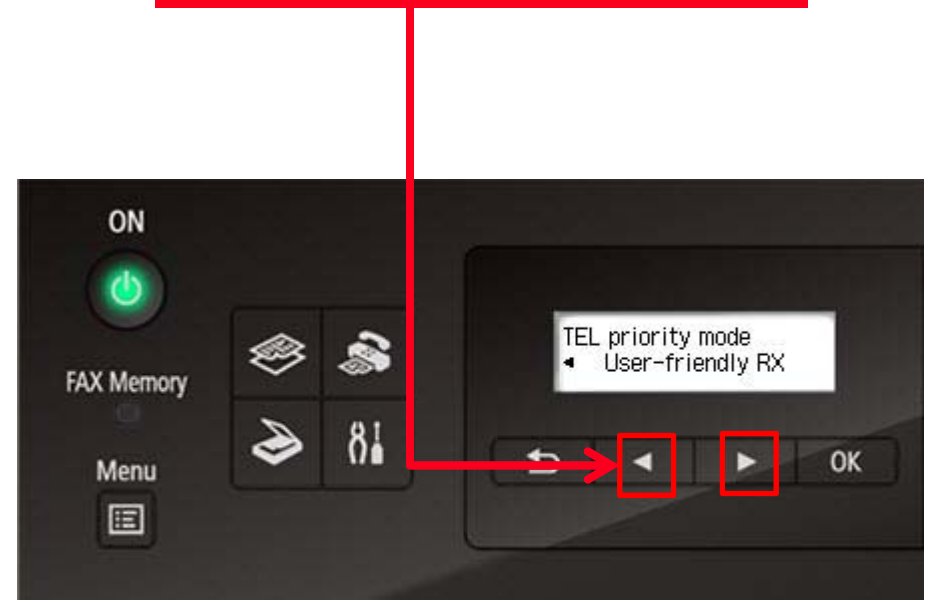
Step 11

Press the **OK** button.



Step 12

Use the **LEFT** or **RIGHT** button to select "User-friendly RX".



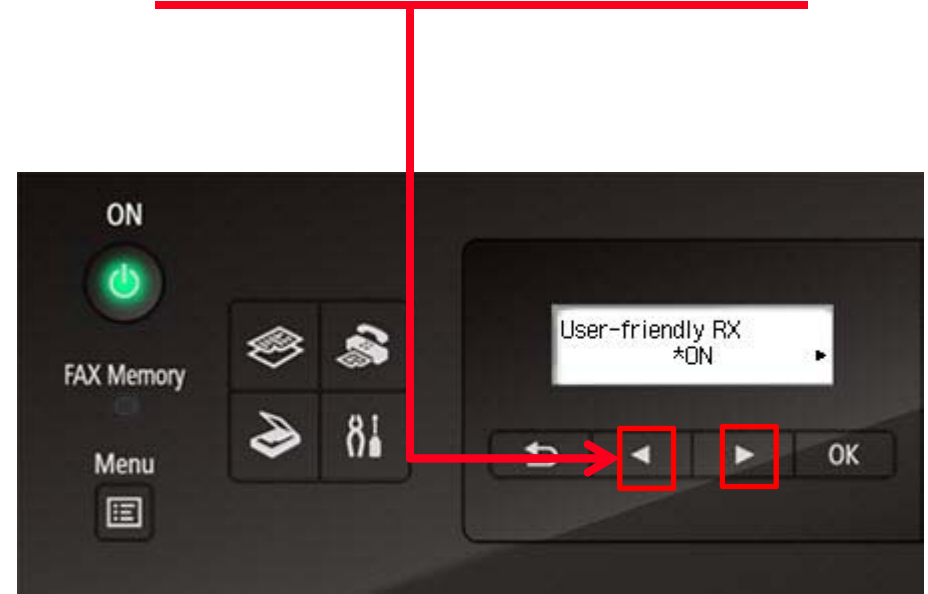
Step 13

Press the **OK** button.



Step 14

Use the **LEFT** or **RIGHT** button to select "ON".



Step 15

Press the **OK** button.



Step 16

You will return to the “Fax standby screen” and the receive mode will appear on the screen.



Receiving A Fax

To receive a fax:

- Pick up the handset on the phone connected to the MX452.
- Listen for fax tones.
- When the tones stop hang up the handset.
- The MX452 will receive the fax document.

IMPORTANT: In order to receive a fax, you must pick up the handset on a phone that is connected to the multifunction.

