

Setting Up Your MX340 In Default Mode (Tel Priority Mode) With An Answering Machine

Connecting The Phone Lines

Connecting Your Phone/Answering Machine

Is your answering machine built into your phone?

YES

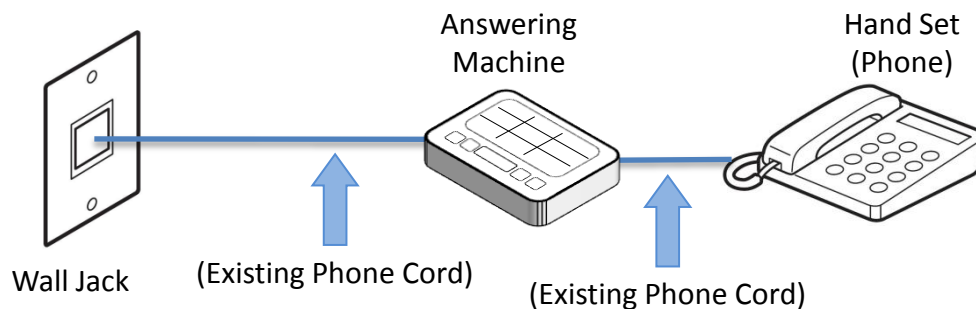
[Click Here](#) or [Go To Page 12](#)

NO

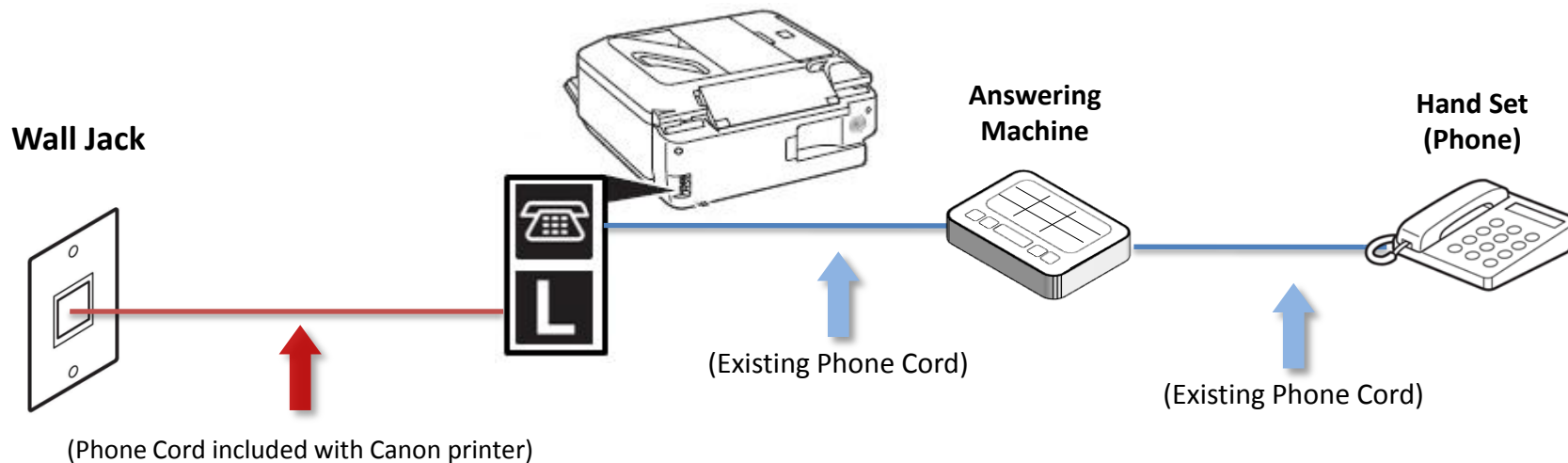
Click the Next Button

Fax to Phone Line Connection

Before



After



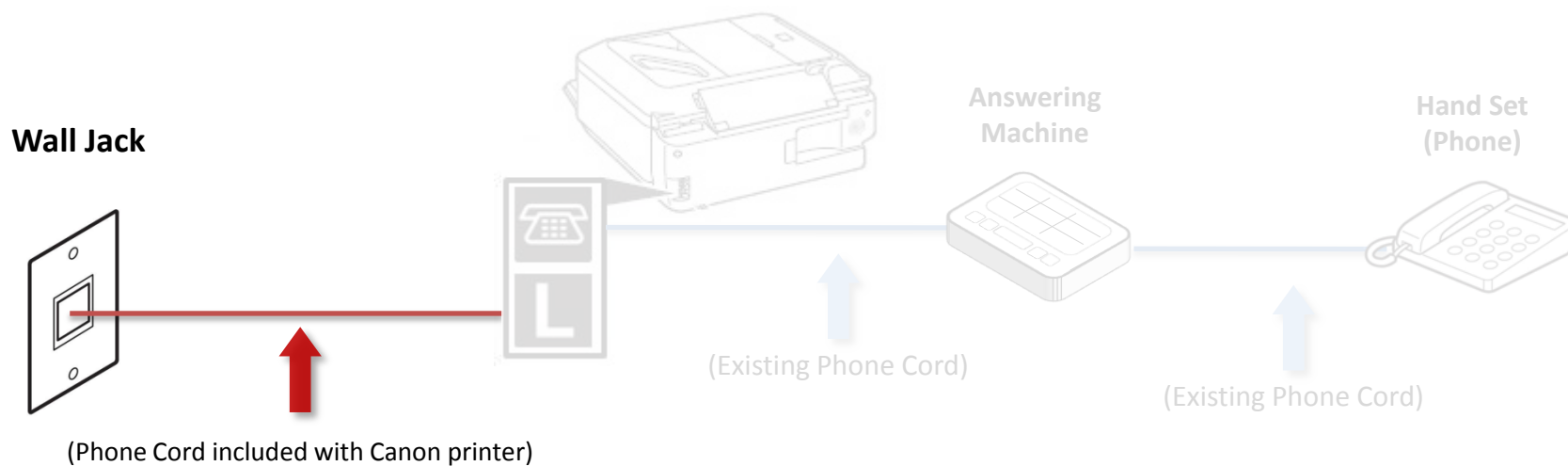
Previous

Next



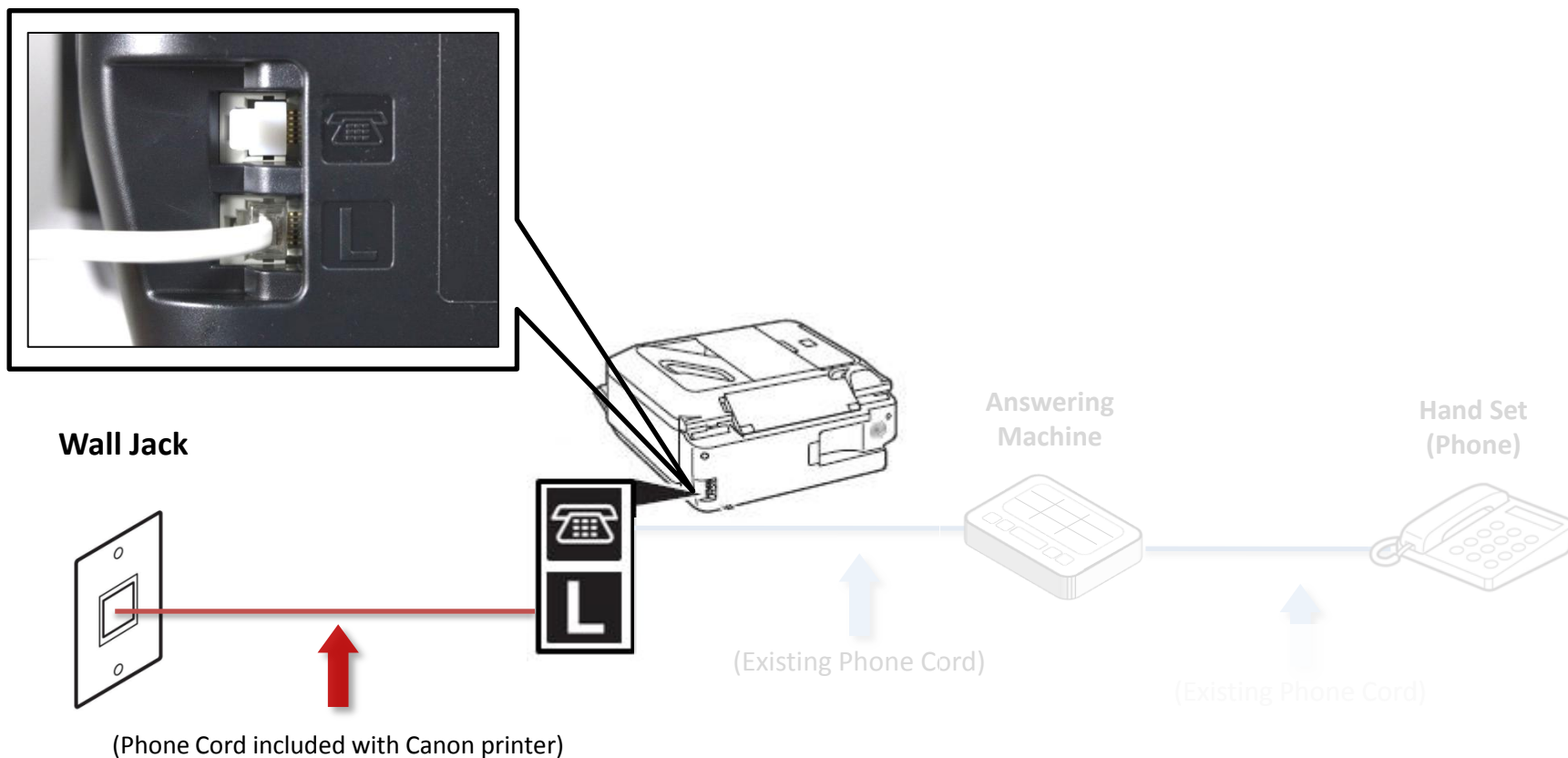
Fax to Phone Line Connection

- Plug the provided phone cord into the wall jack



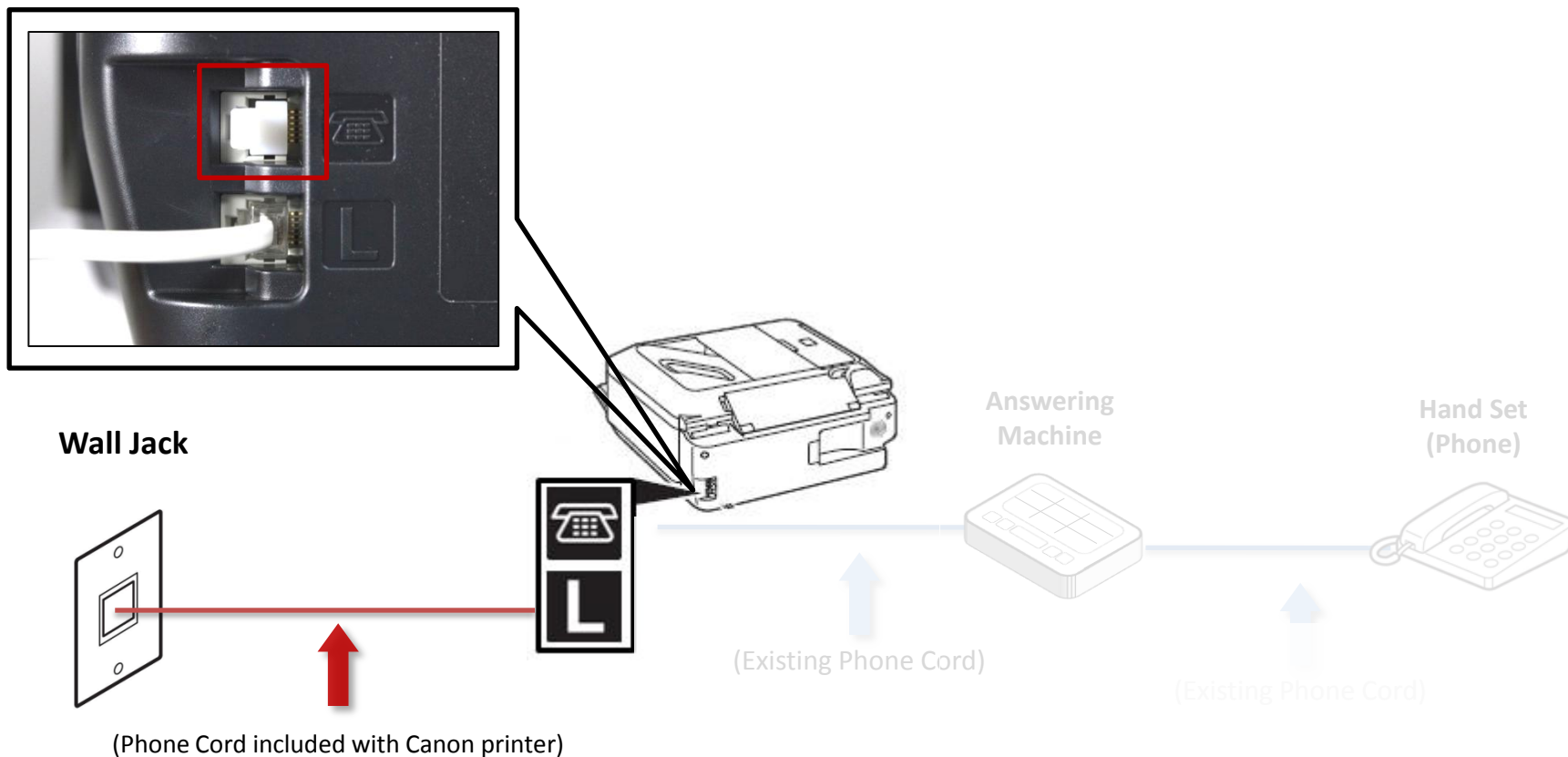
Fax to Phone Line Connection

- Plug the provided phone cord into the “L” jack located on the rear of the multifunction



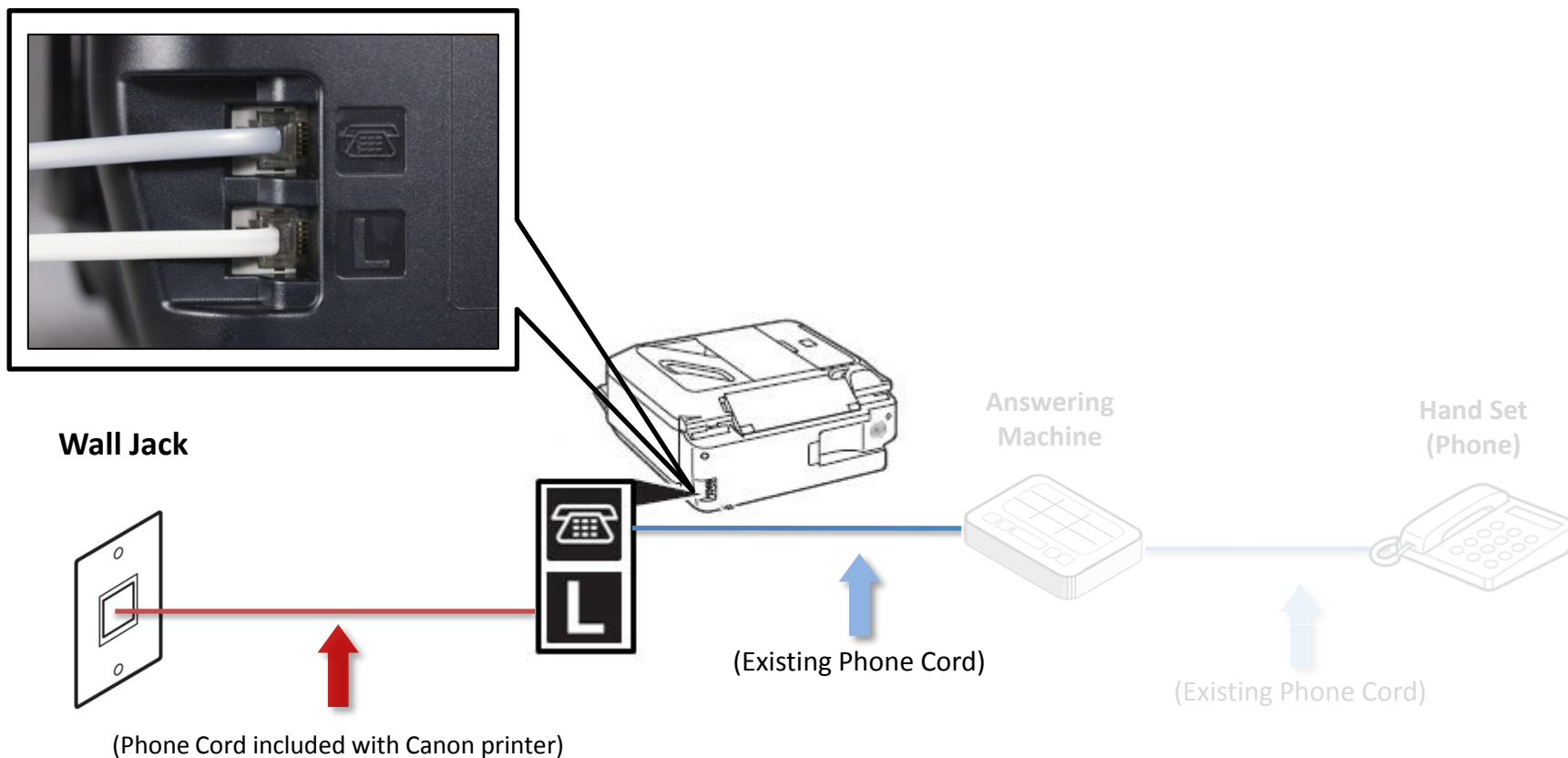
Fax to Phone Line Connection

- Remove the white plug (D) from the upper jack



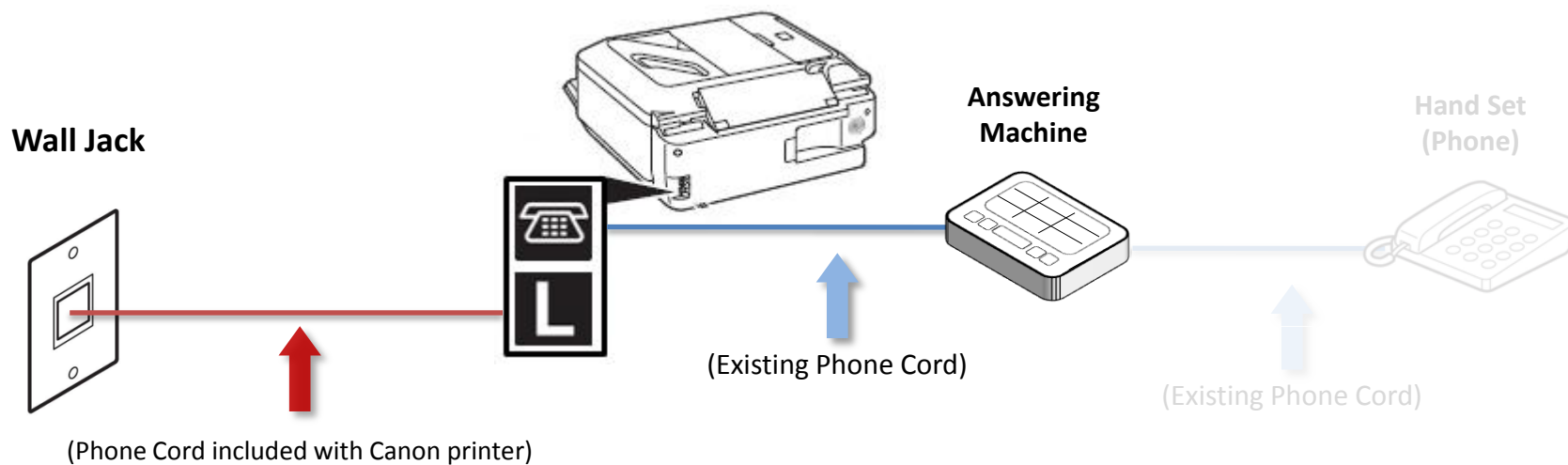
Fax to Phone Line Connection

- Plug the second phone cord into “telephone” jack located on the rear of the multifunction



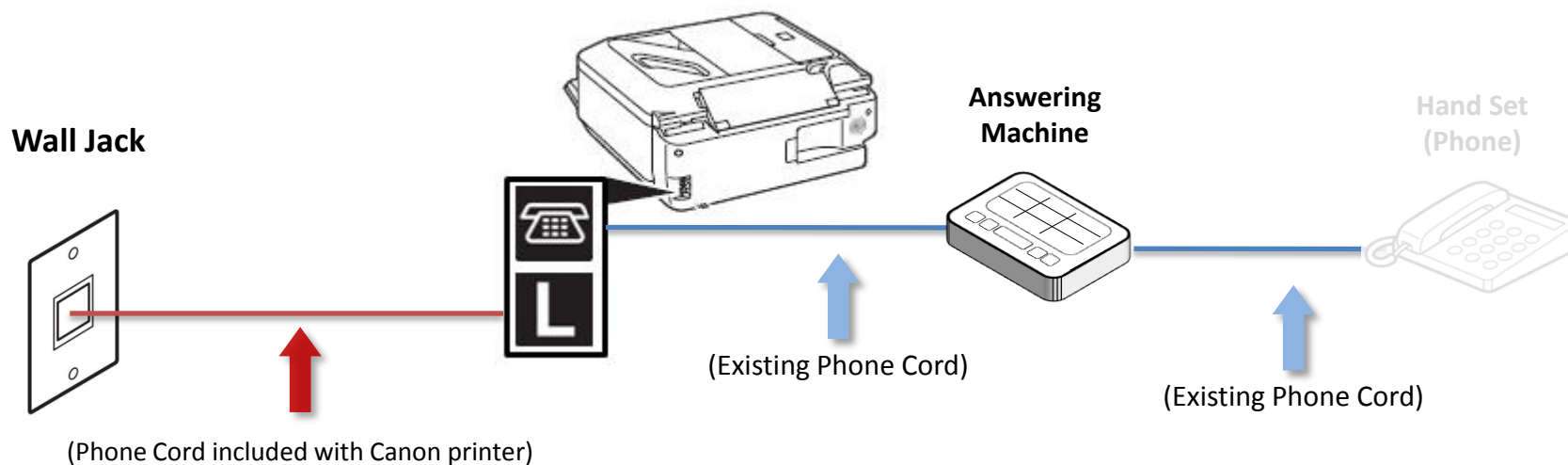
Fax to Phone Line Connection

- Plug the second phone cord into the answering machine



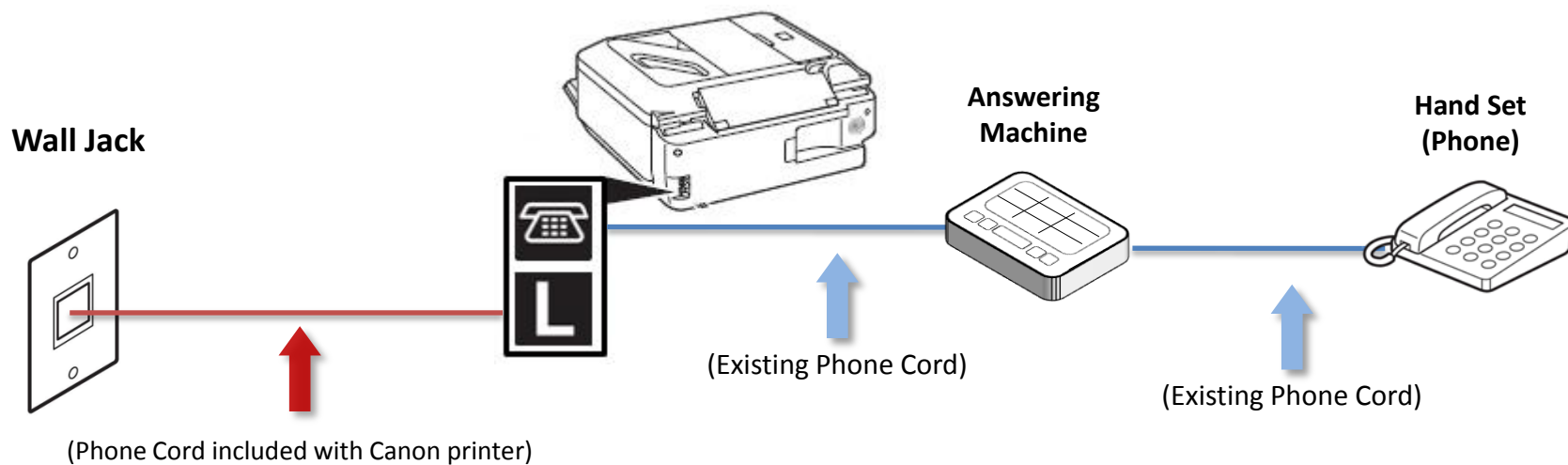
Fax to Phone Line Connection

- Plug the third phone cord into the answering machine



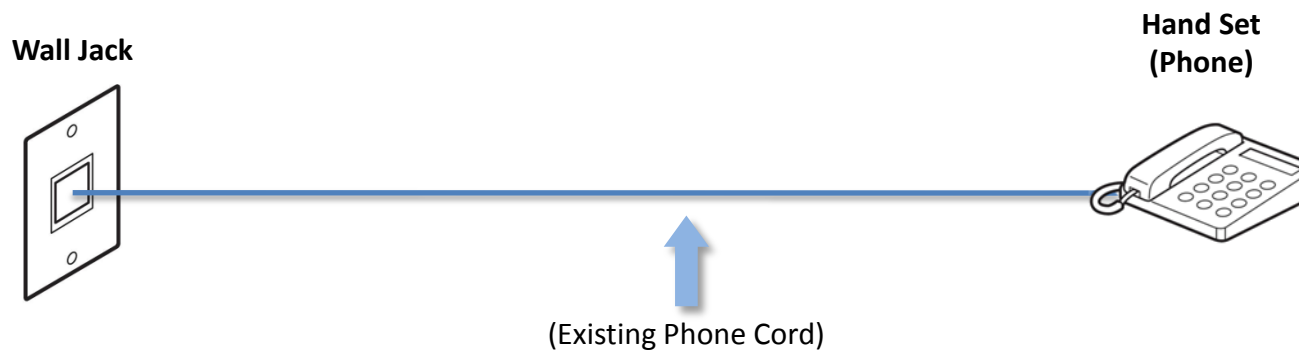
Fax to Phone Line Connection

- Plug the third phone cord into the phone

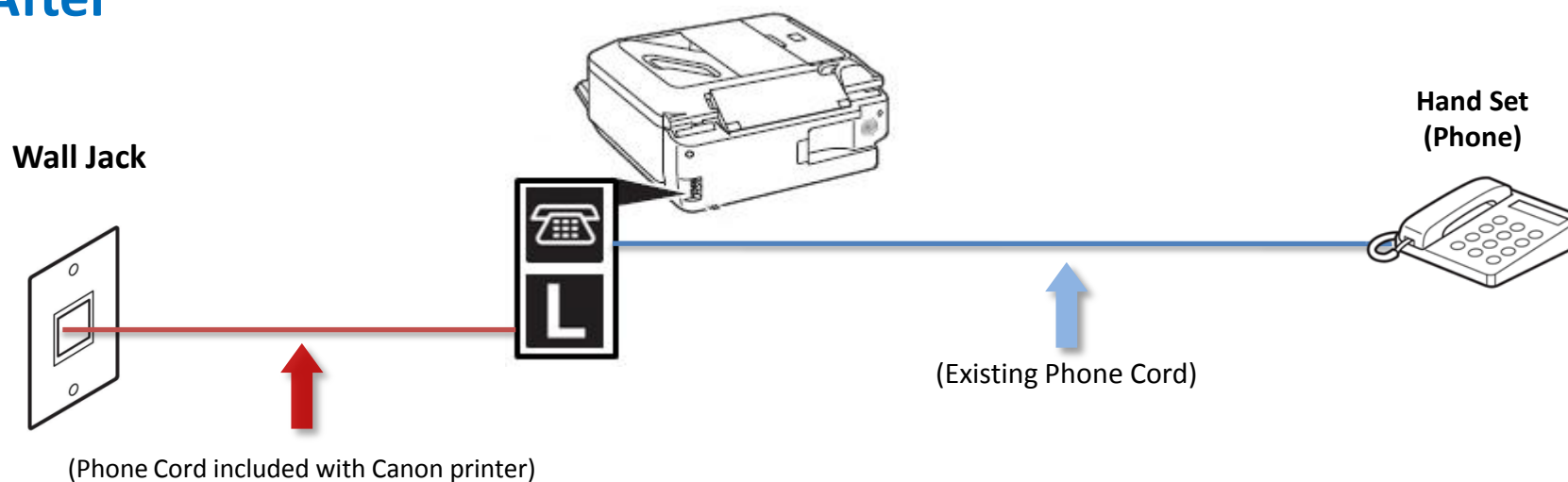


Fax to Phone Line Connection

Before



After



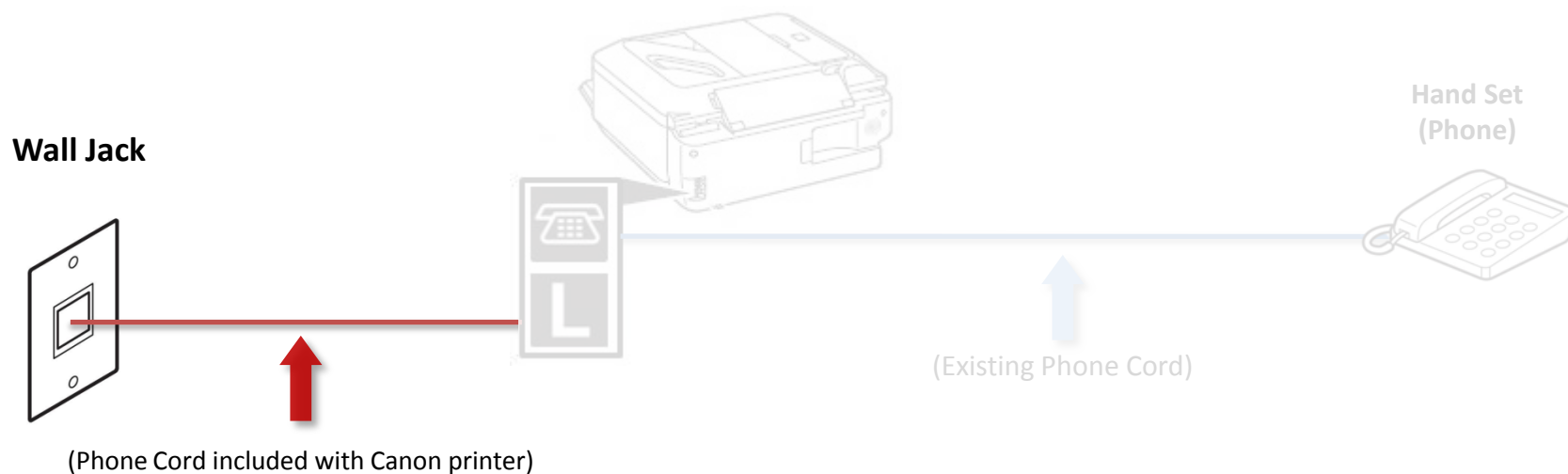
Previous

Next



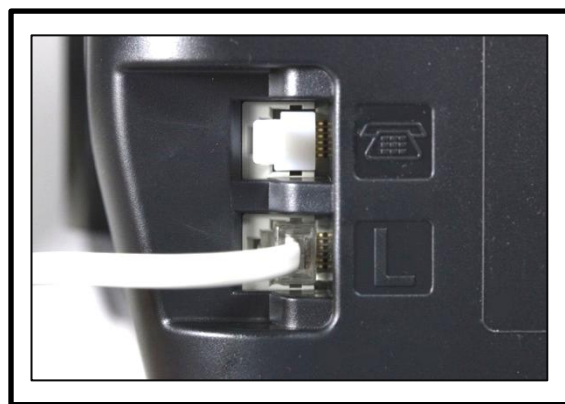
Fax to Phone Line Connection

- Plug the provided phone cord into the wall jack



Fax to Phone Line Connection

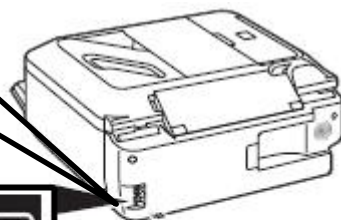
- Plug the provided phone cord into the “L” jack located on the rear of the multifunction



Wall Jack



(Phone Cord included with Canon printer)



(Existing Phone Cord)



Hand Set
(Phone)



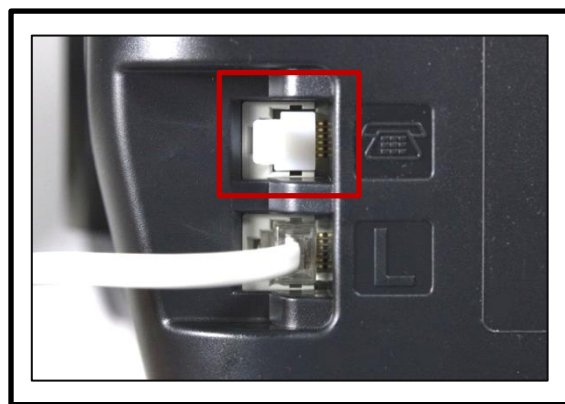
Previous

Next



Fax to Phone Line Connection

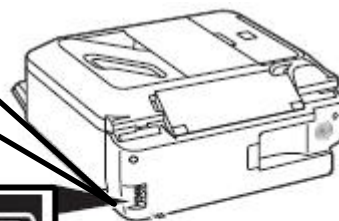
- Remove the white plug (D) from the upper jack.



Wall Jack



(Phone Cord included with Canon printer)



(Existing Phone Cord)

Hand Set
(Phone)



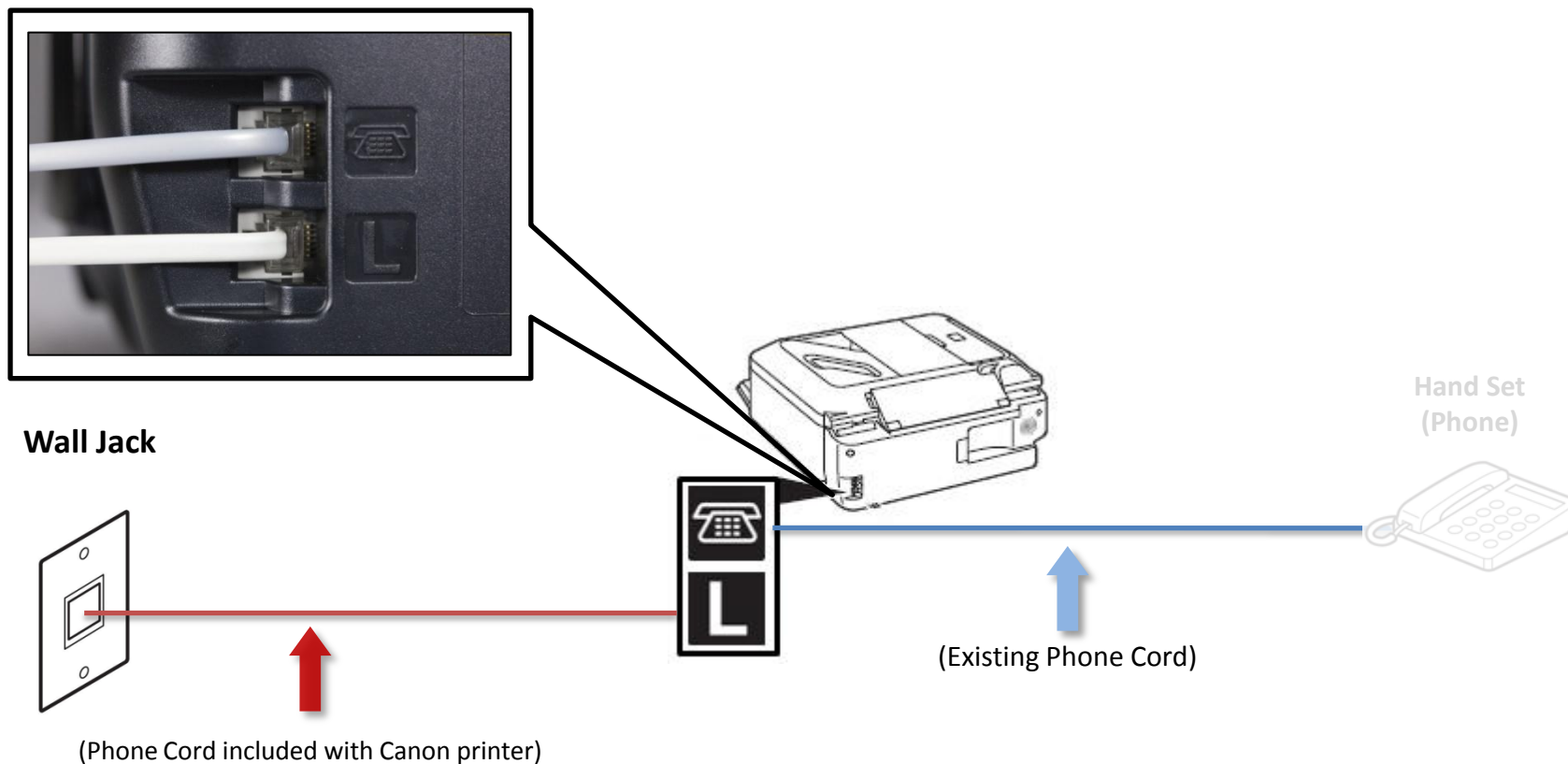
Previous

Next



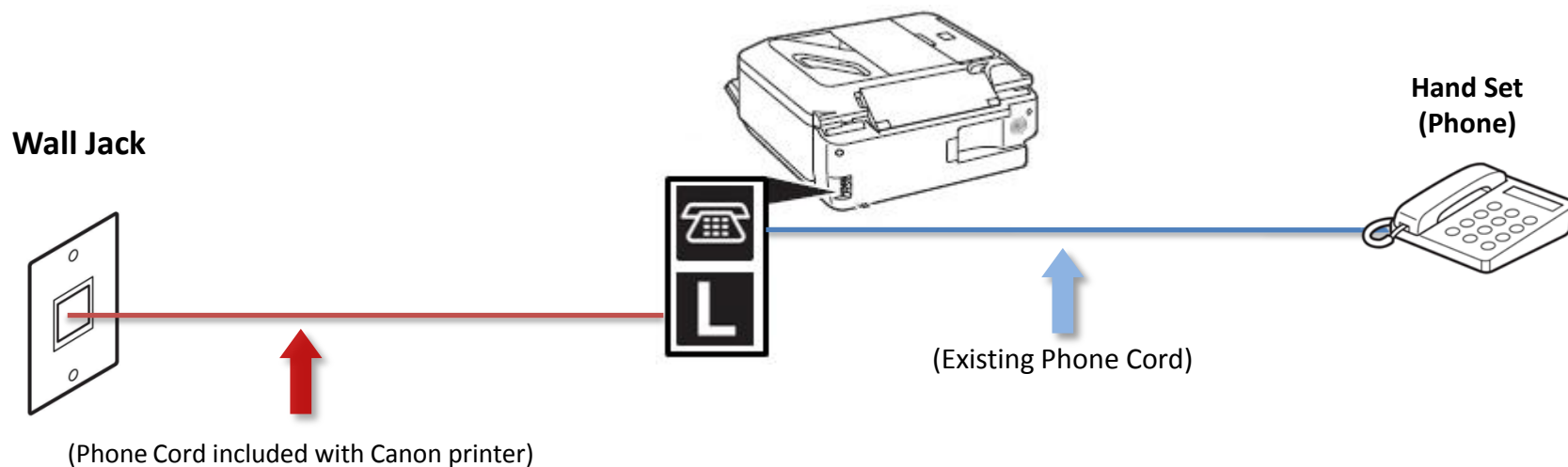
Fax to Phone Line Connection

- Plug the second phone cord into the “telephone” jack located on the rear of the multifunction



Fax to Phone Line Connection

- Plug the second phone cord into the phone



Previous

Next





Setting Up The Receive Mode



Return To “Connecting Your Phone/Answering Machine”

Next



Step 1

Turn on the MX340 by pressing the **ON** button.



Step 2

Press the **FAX** button.



Step 3

Press the **Menu** button



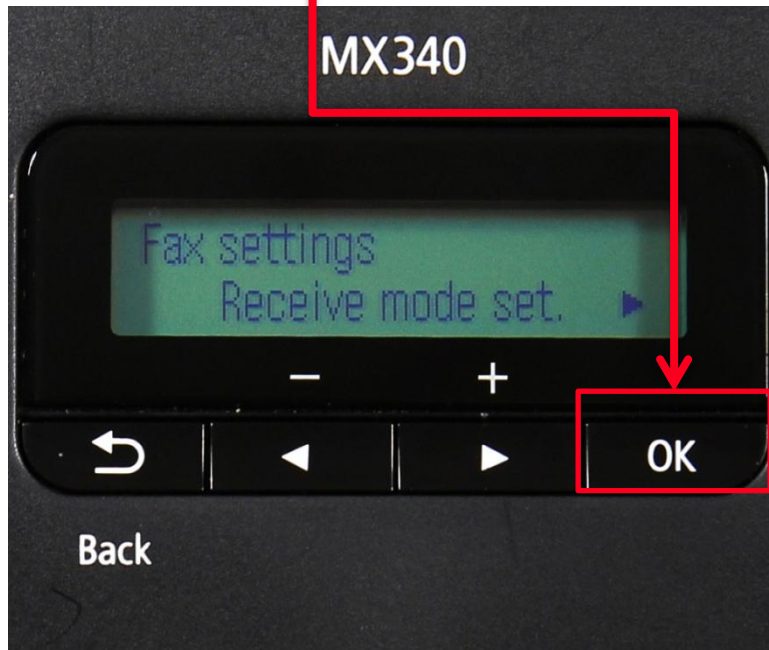
Step 4

Use the **Left** or **Right** Arrow button to select "Receive mode set".



Step 5

Press the **OK** button



Step 6

The “Receive mode set” screen will appear



Step 7

Use the **Left** or **Right** arrow button to select “TEL priority mode”



Step 8

Ensure that “TEL priority mode” is displayed



Step 9

Press the **OK** button



Step 10

Your MX340 is now set to TEL priority mode. Notice that the mode is listed on the fax standby screen.



Receiving A Fax

To receive a fax when you are home you will:

- Pick up the handset on the phone connected to the MX340.
- Listen for fax tones.
- When the tones stop hang up the handset.
- The MX340 will receive the fax document.

To receive a fax while you are away:

- The answering machine will answer the call.
- If fax tones are heard by the MX340 it will take over the call and receive the fax document.

IMPORTANT: In order to receive a fax, you must either pick up the handset on a phone that is connected to the MX340 or let your answering machine answer the call.

