



Setting Up Your MX330 In Default Mode (Tel Priority Mode) Without An Answering Machine



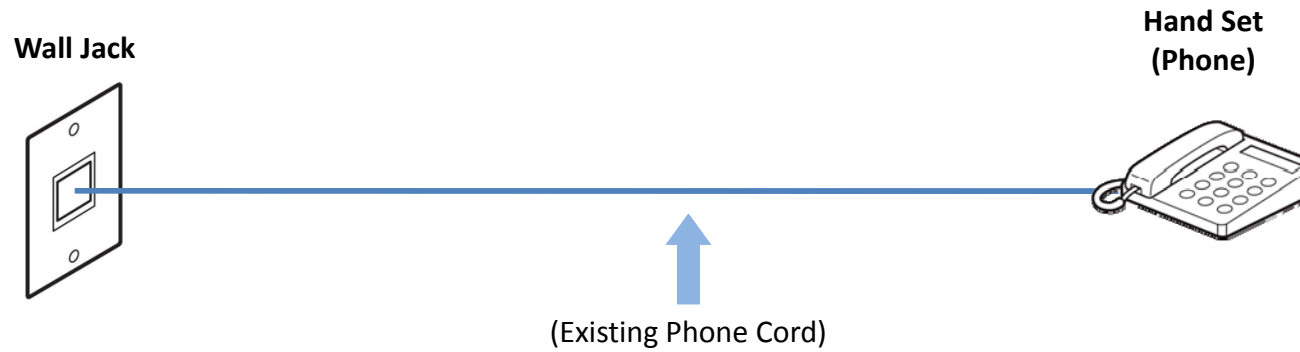


Connecting The Phone Lines

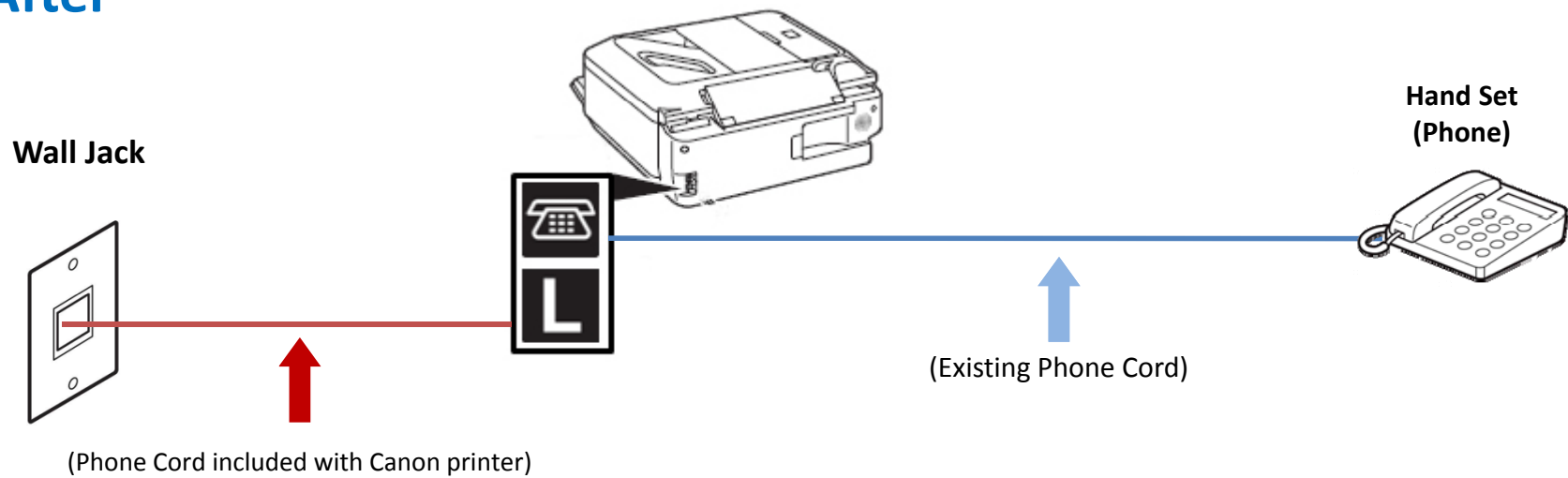


Fax to Phone Line Connection

Before



After

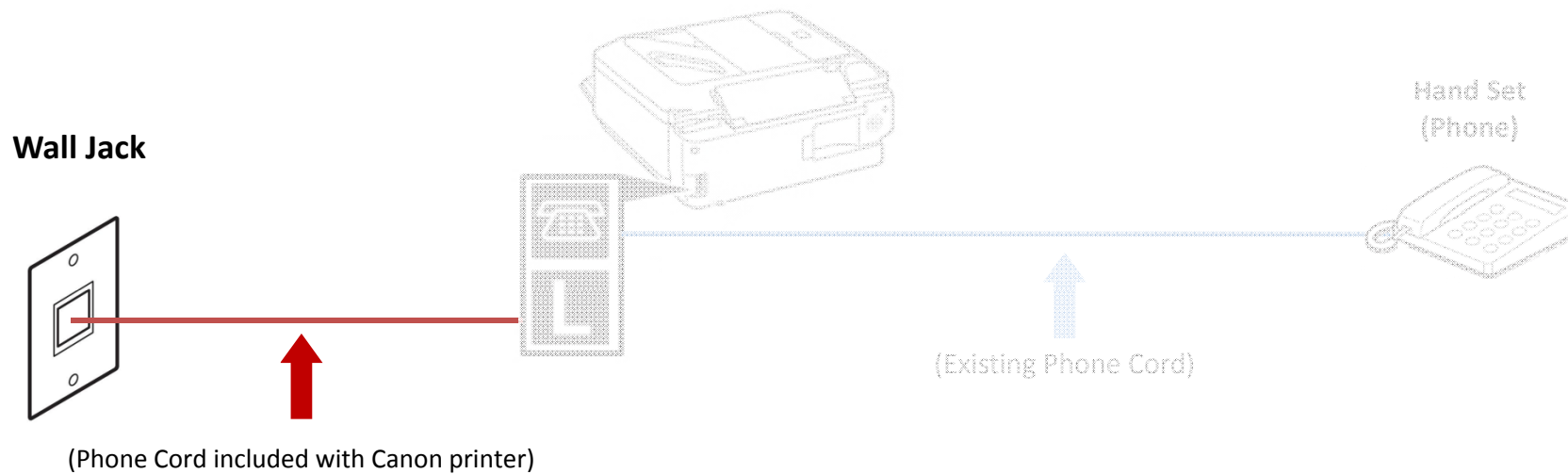


 **Previous**

Next 

Fax to Phone Line Connection

- Plug the provided phone cord into the wall jack



Fax to Phone Line Connection

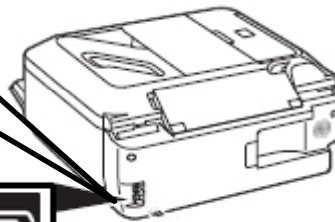
- Plug the provided phone cord into the “L” jack located on the rear of the multifunction



Wall Jack



(Phone Cord included with Canon printer)



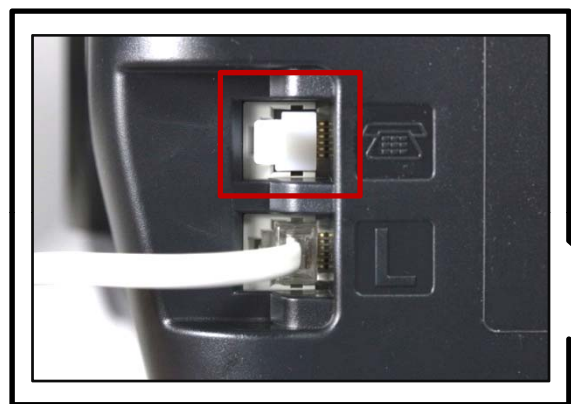
(Existing Phone Cord)



Hand Set
(Phone)

Fax to Phone Line Connection

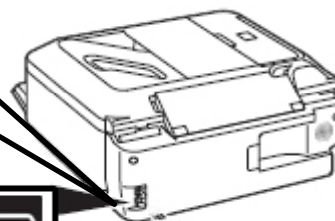
- Remove the white plug (D) from the upper jack.



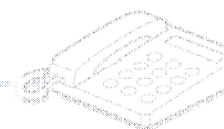
Wall Jack



(Phone Cord included with Canon printer)



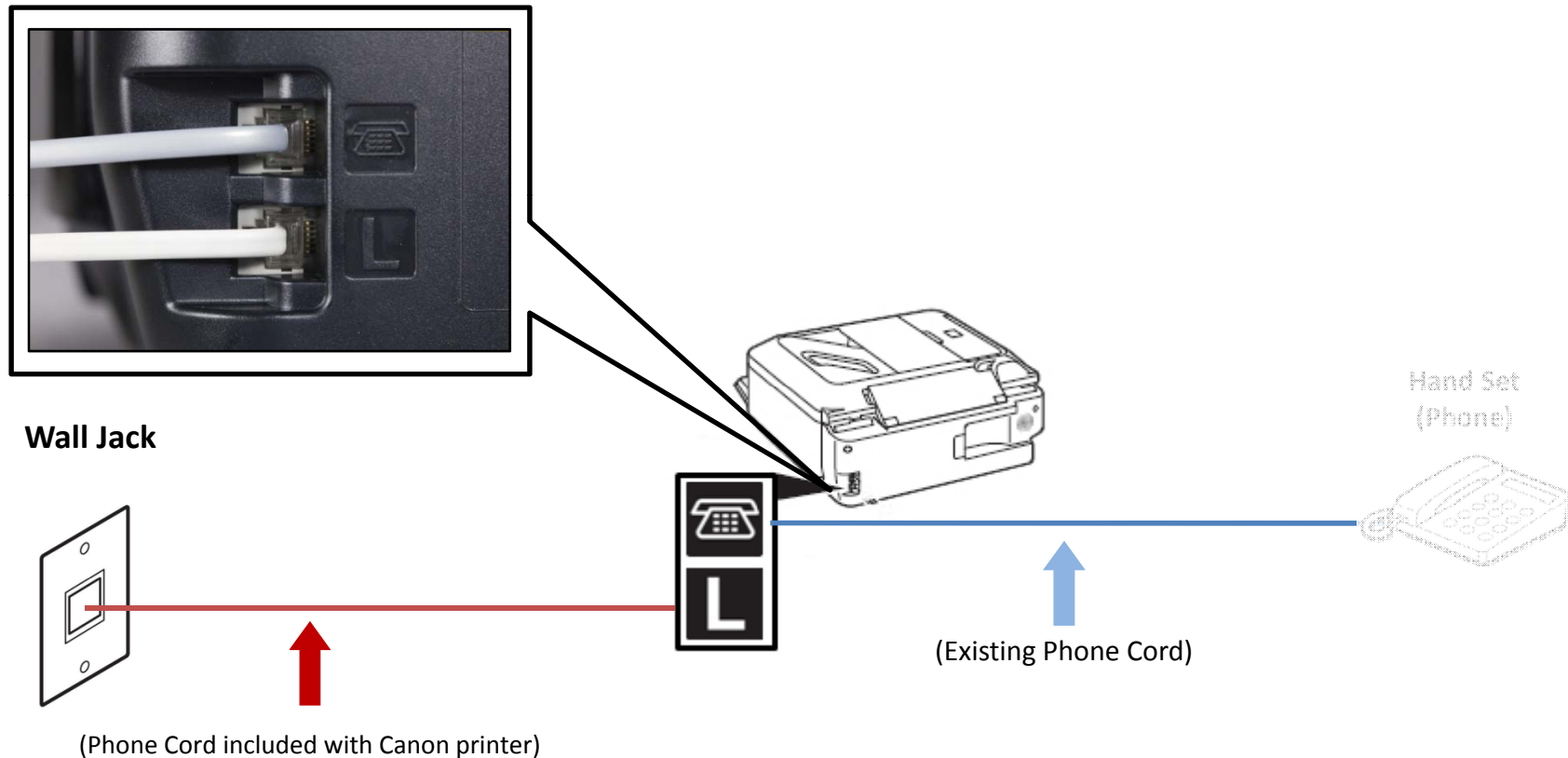
(Existing Phone Cord)



Hand Set
(Phone)

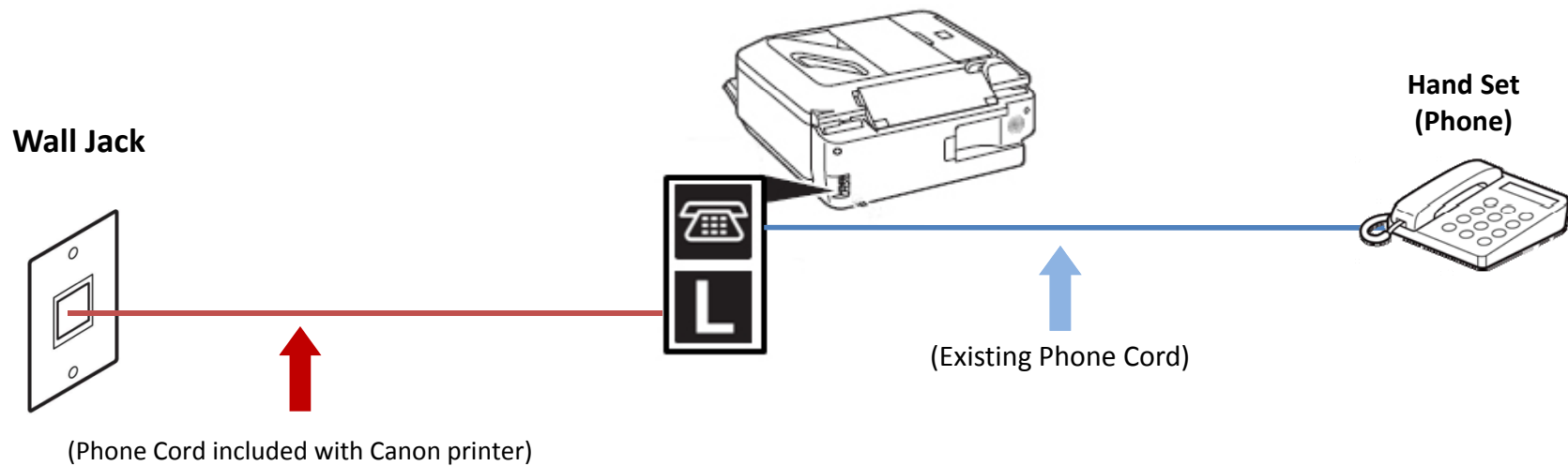
Fax to Phone Line Connection

- Plug the second phone cord into the “telephone” jack located on the rear of the multifunction



Fax to Phone Line Connection

- Plug the second phone cord into the phone





Setting Up The Receive Mode



Step 1

Turn on the MX330 by pressing the **ON** button.



Step 2

Press the **FAX** button.



Step 3

The fax standby screen will appear.



Step 4

Press **Menu** button.



Step 5

The FAX menu will appear.



Step 6

Press the **OK** button.



Step 7

The “Receive mode settings” screen will appear.



Step 8

Use the **UP** or **DOWN** button to select “TEL priority mode”.



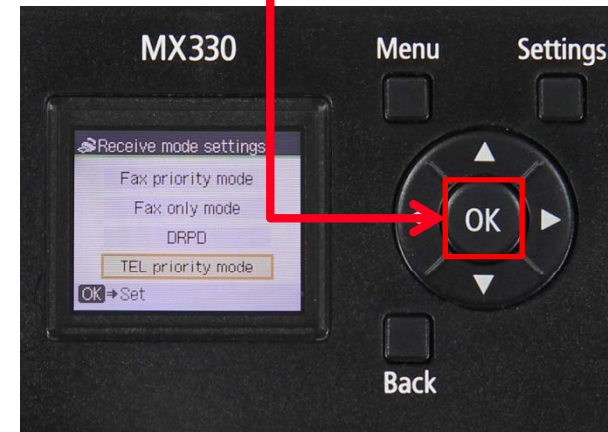
Step 9

Ensure “TEL priority mode” is selected



Step 10

Press the **OK** button



Step 11

The FAX menu will appear.



Step 12

Press the **FAX** button.



Step 13

Your MX330 is now set to TEL priority mode. Notice that the mode is listed on the fax standby screen.



Receiving A Fax

To receive a fax:

- Pick up the handset on the phone connected to the MX330.
- Listen for fax tones.
- When the tones stop hang up the handset.
- The MX330 will receive the fax document.

IMPORTANT: In order to receive a fax, you must pick up the handset on a phone that is connected to the multifunction.

