



Setting Up Your MX330 In Default Mode (Tel Priority Mode) With An Answering Machine





Connecting The Phone Lines



Previous

Next



Connecting Your Phone/Answering Machine

Is your answering machine built into your phone?

YES

[Click Here or Go To Page 12](#)

NO

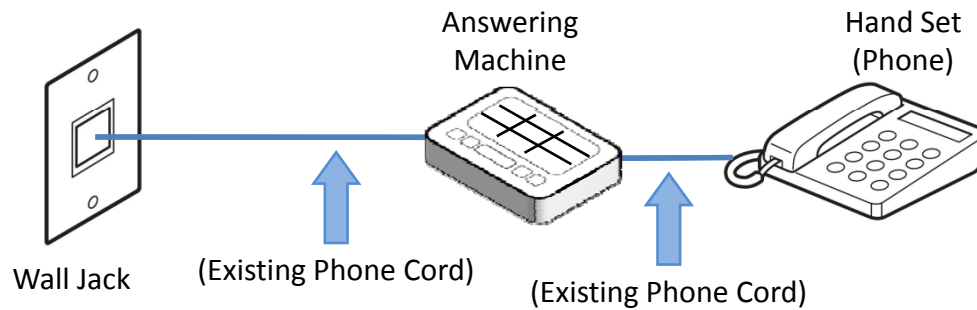
Click the Next Button

 **Previous**

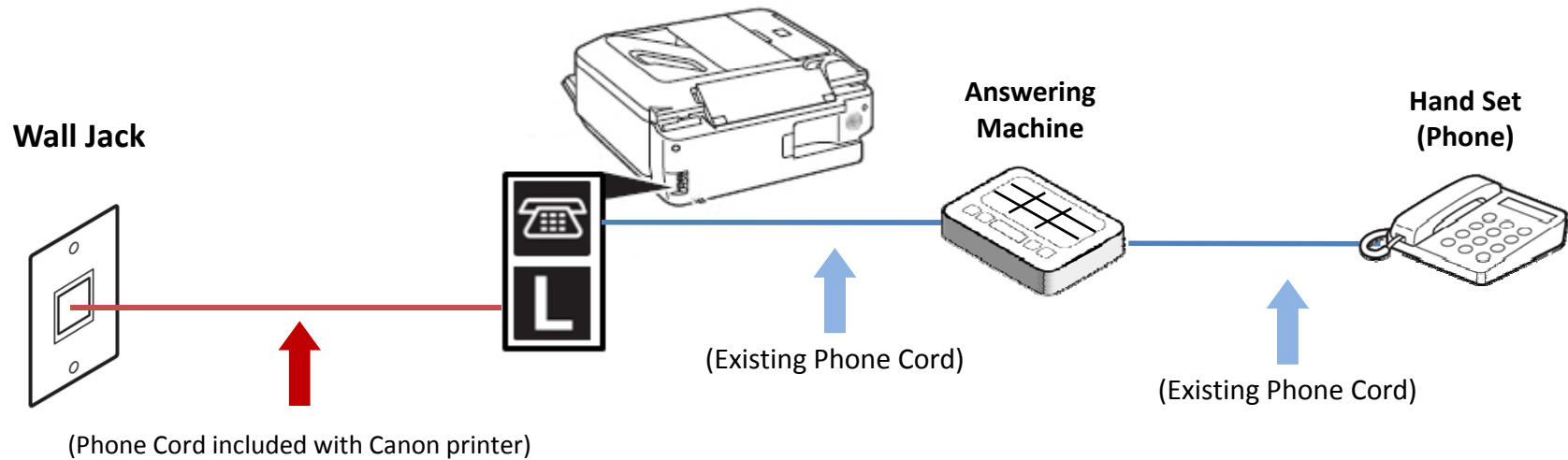
Next 

Fax to Phone Line Connection

Before



After



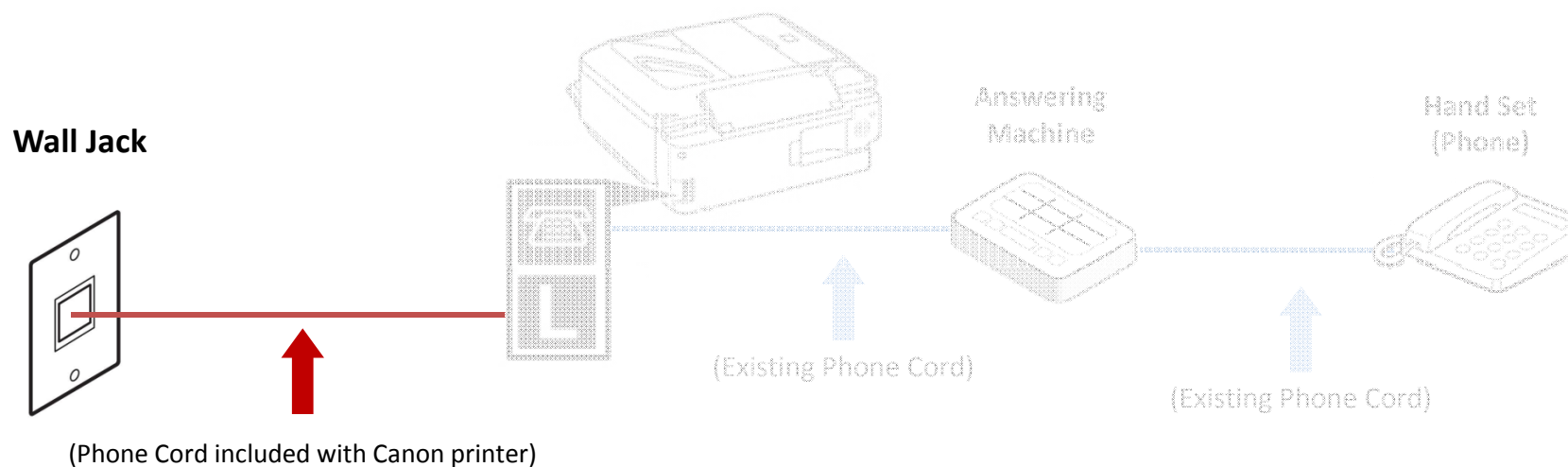
Previous

Next



Fax to Phone Line Connection

- Plug the provided phone cord into the wall jack



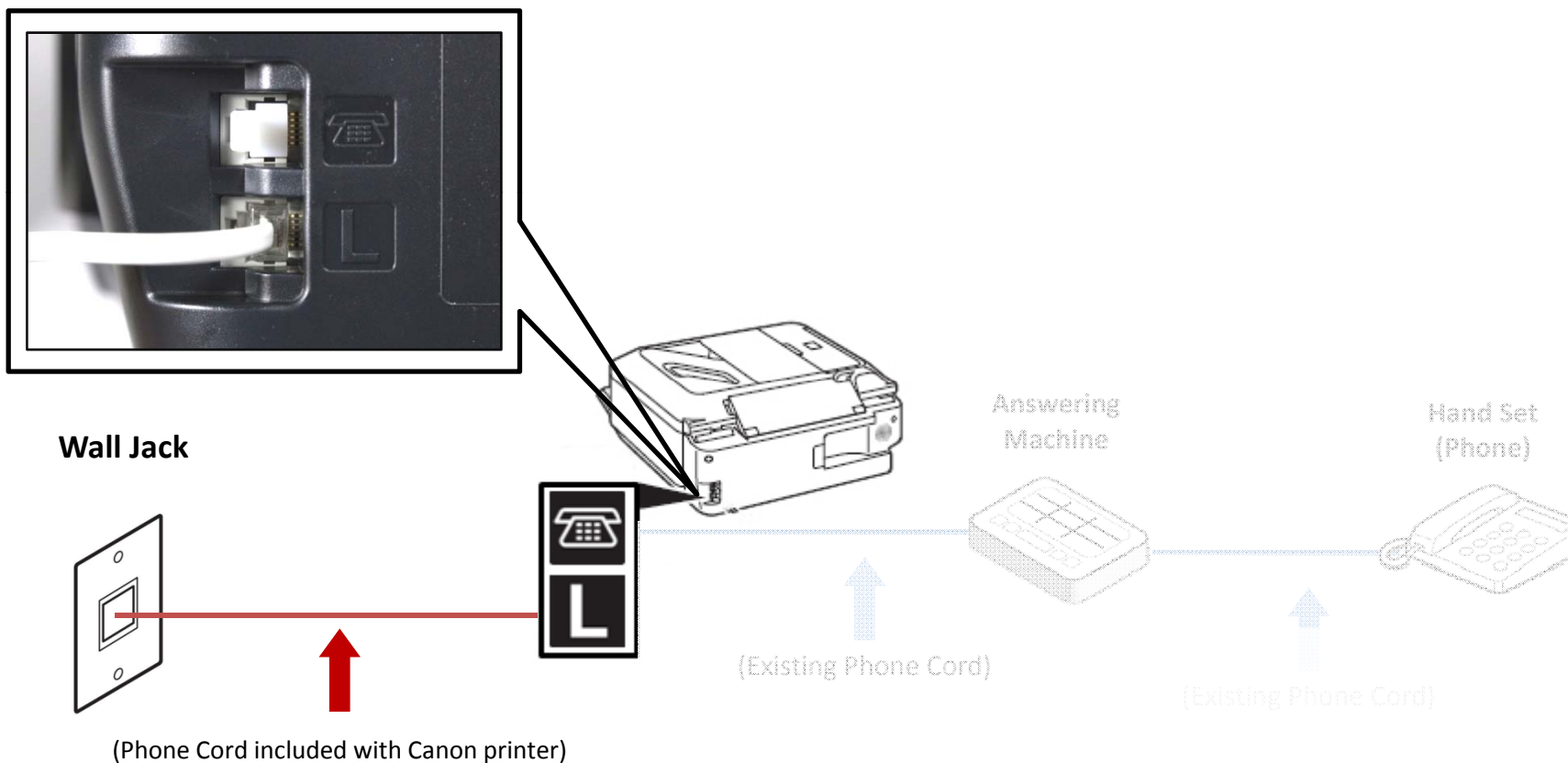
Previous

Next



Fax to Phone Line Connection

- Plug the provided phone cord into the “L” jack located on the rear of the multifunction



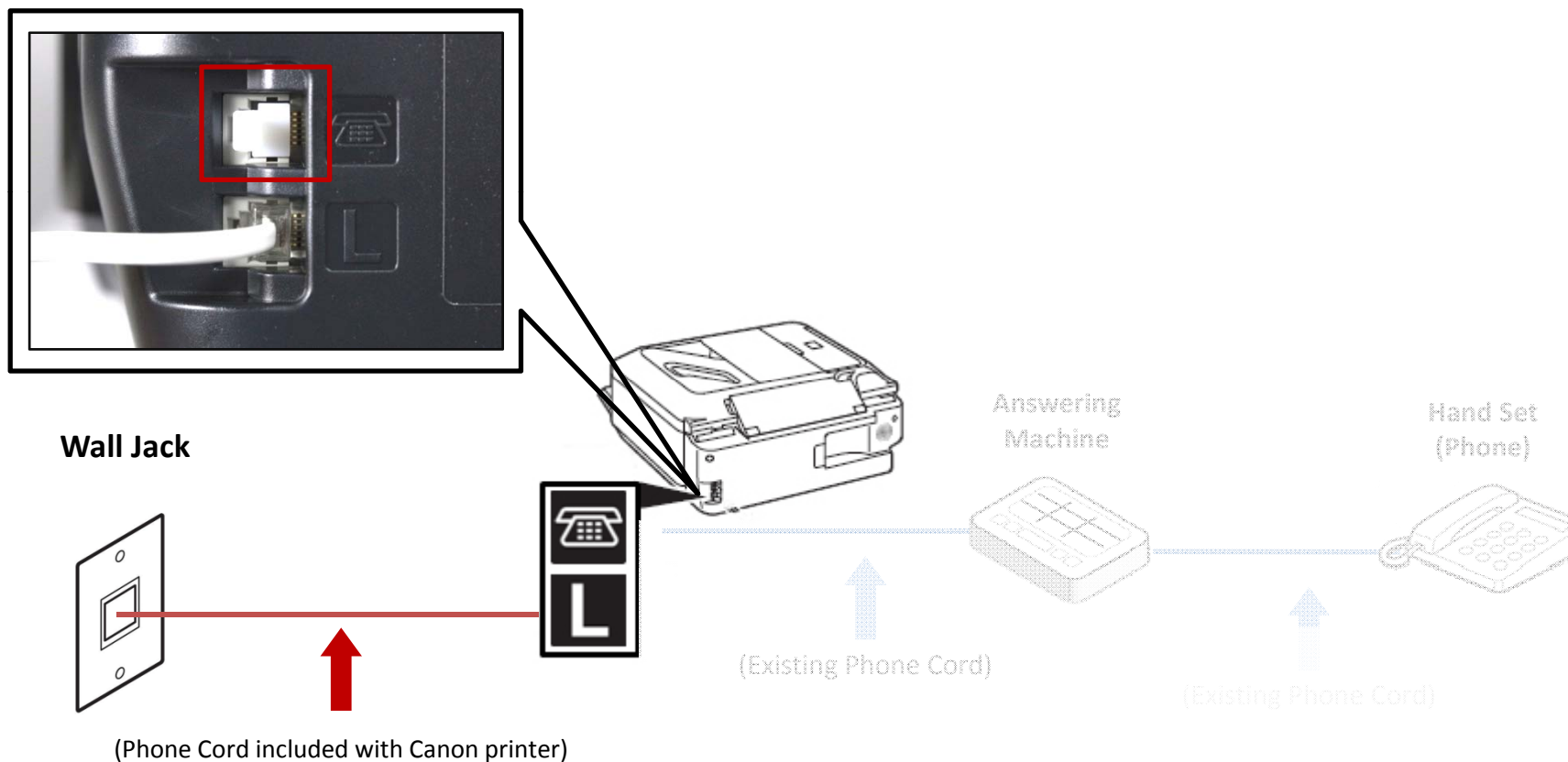
Previous

Next



Fax to Phone Line Connection

- Remove the white plug (D) from the upper jack



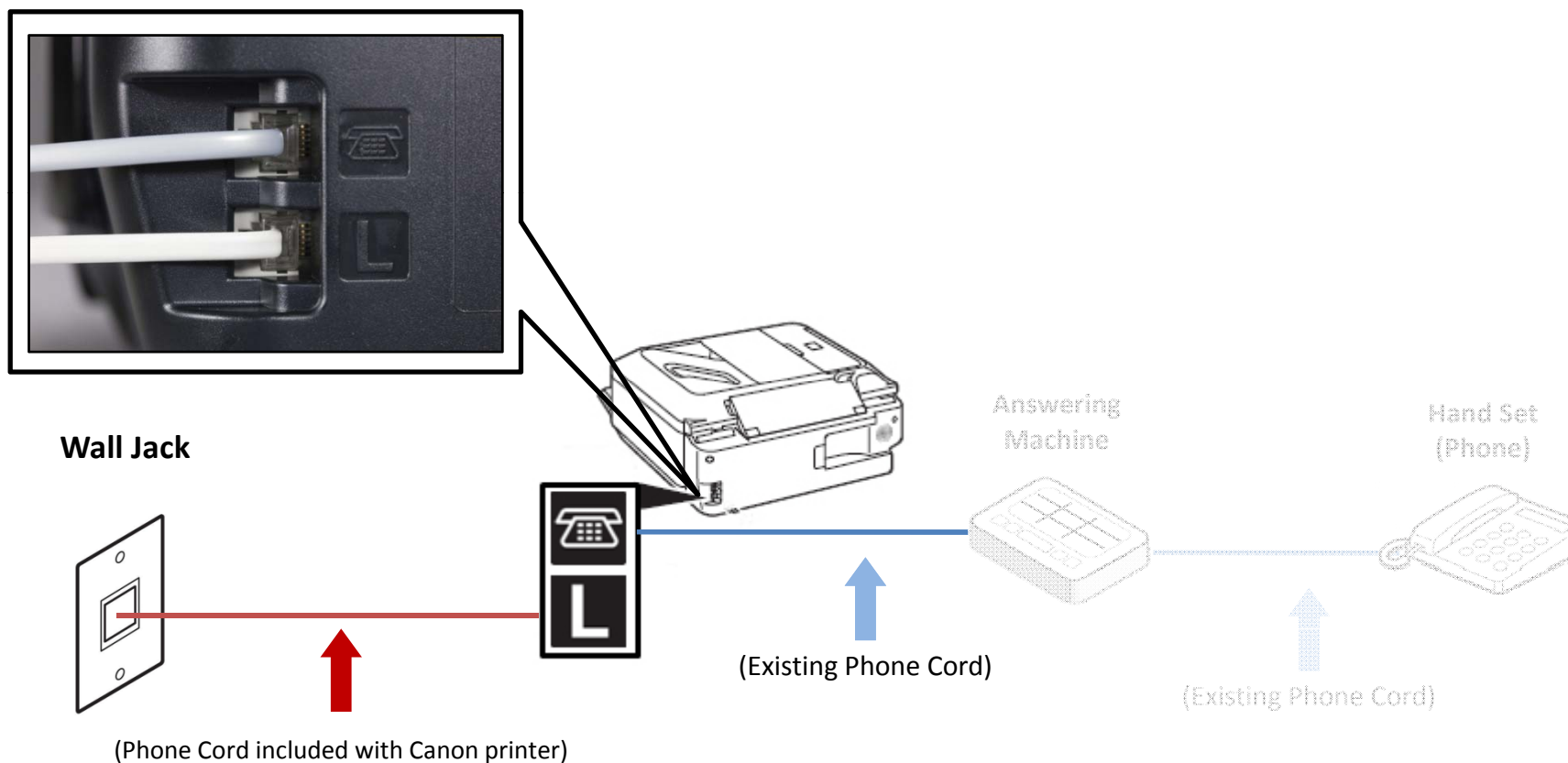
Previous

Next



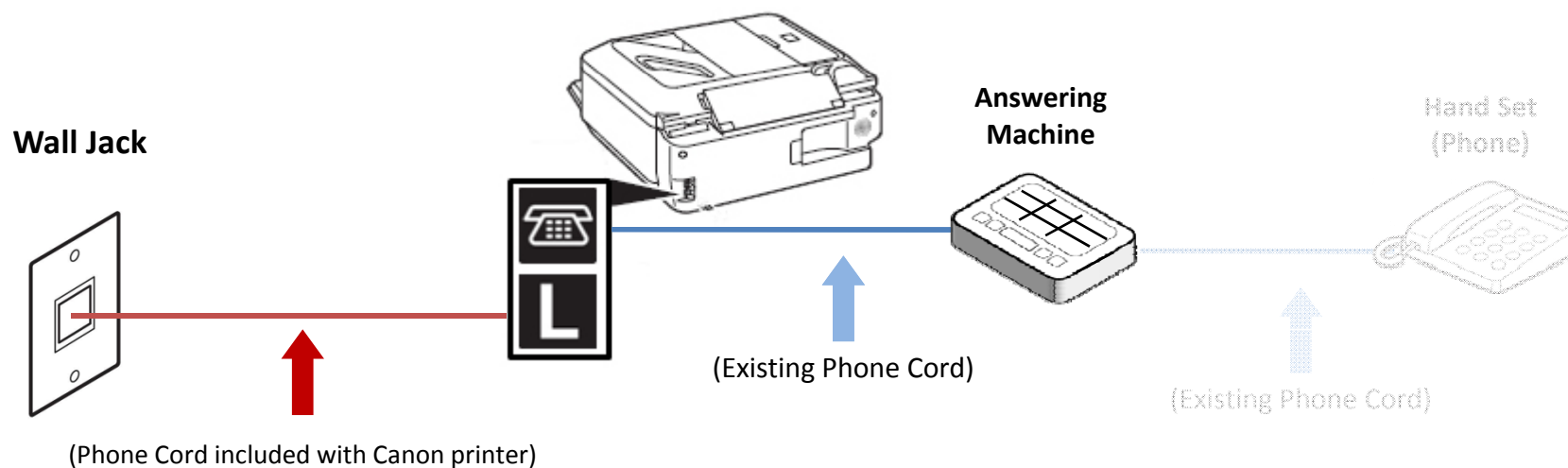
Fax to Phone Line Connection

- Plug the second phone cord into “telephone” jack located on the rear of the multifunction



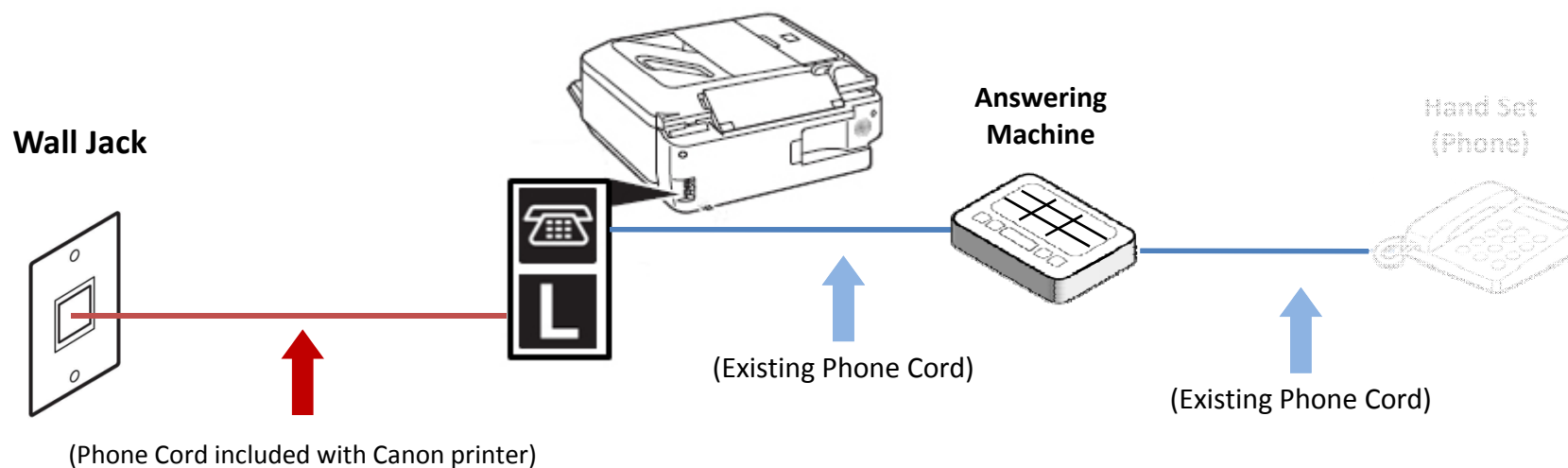
Fax to Phone Line Connection

- Plug the second phone cord into the answering machine



Fax to Phone Line Connection

- Plug the third phone cord into the answering machine



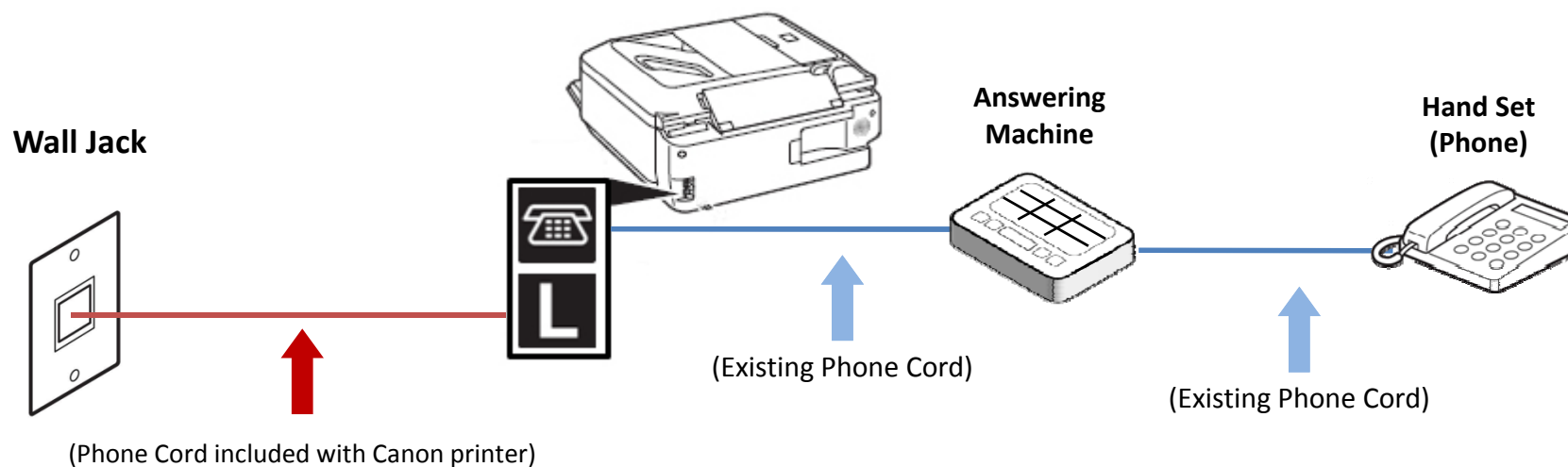
Previous

Next



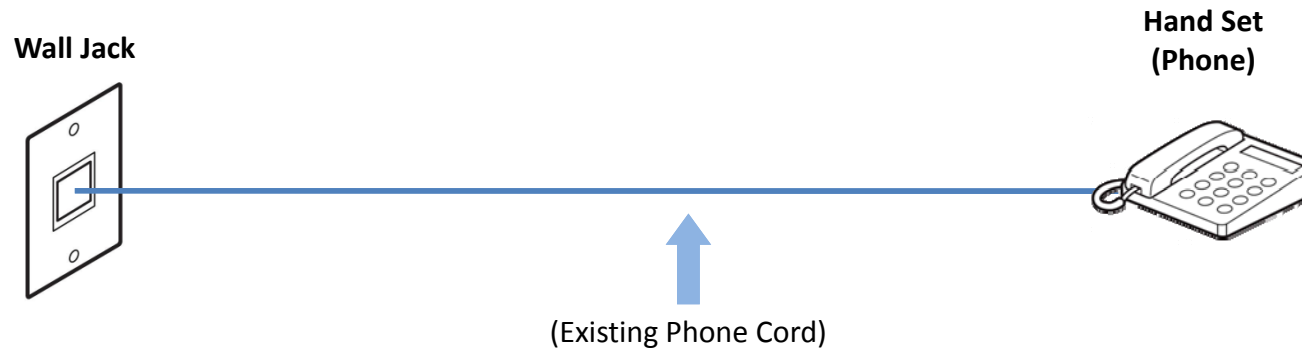
Fax to Phone Line Connection

- Plug the third phone cord into the phone

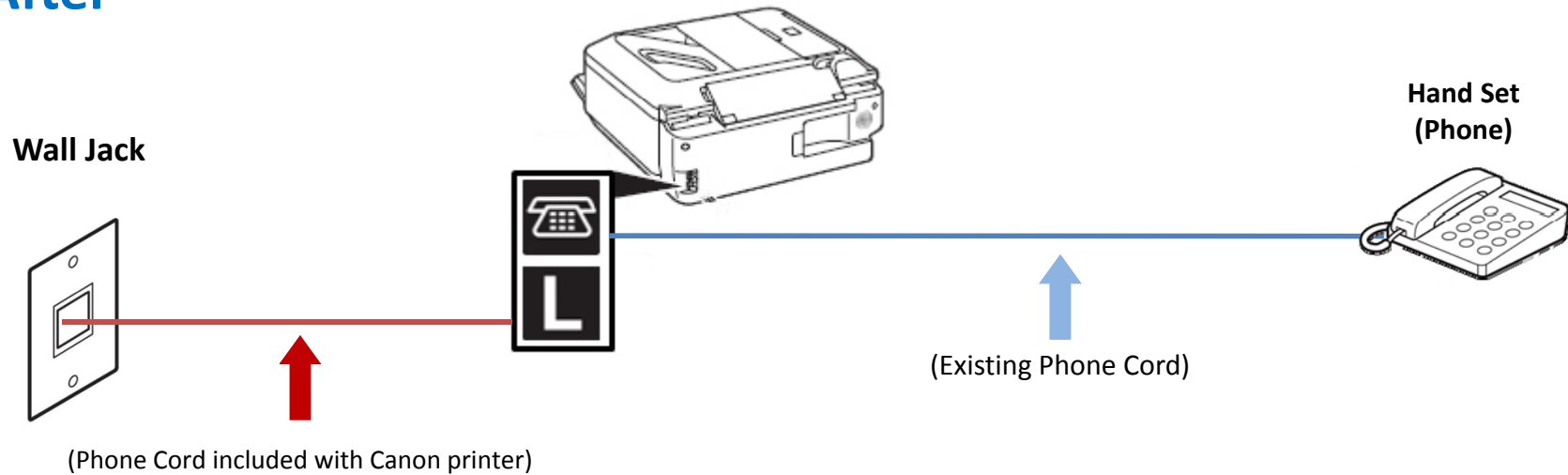


Fax to Phone Line Connection

Before



After



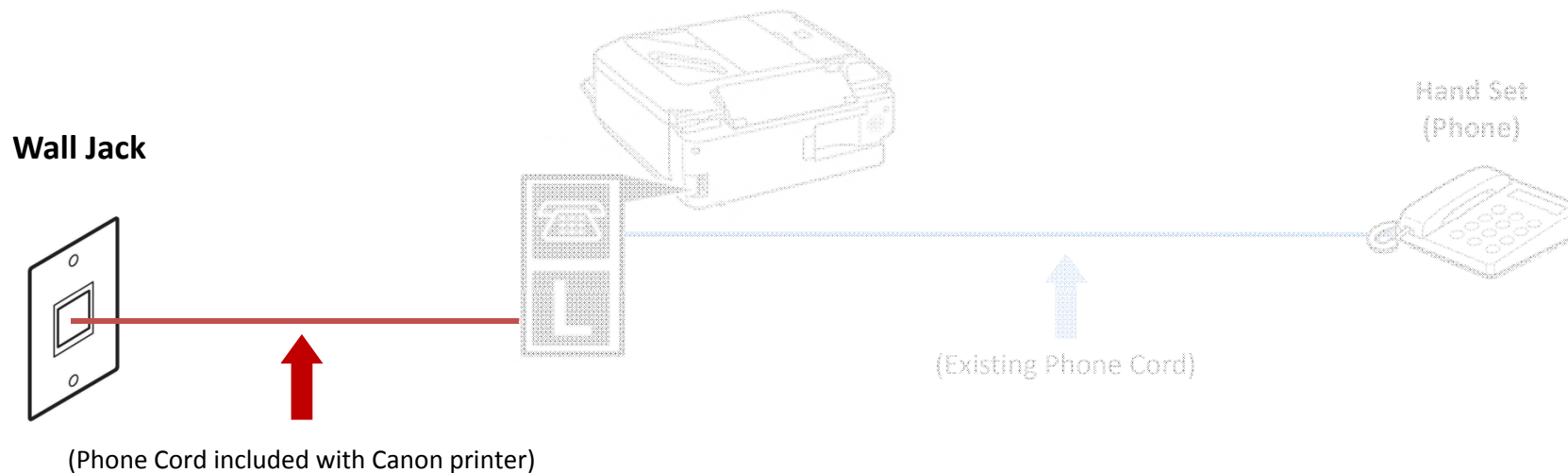
Previous

Next



Fax to Phone Line Connection

- Plug the provided phone cord into the wall jack



Fax to Phone Line Connection

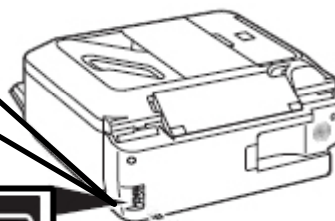
- Plug the provided phone cord into the “L” jack located on the rear of the multifunction



Wall Jack



(Phone Cord included with Canon printer)



Hand Set
(Phone)



(Existing Phone Cord)



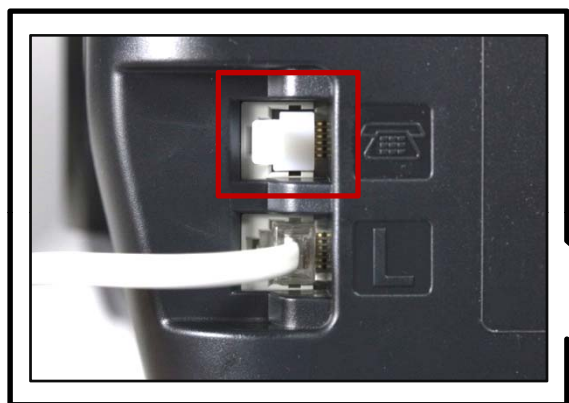
Previous

Next

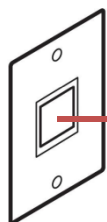


Fax to Phone Line Connection

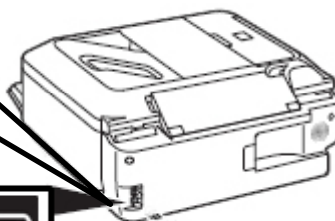
- Remove the white plug (D) from the upper jack.



Wall Jack



(Phone Cord included with Canon printer)



(Existing Phone Cord)

Hand Set
(Phone)



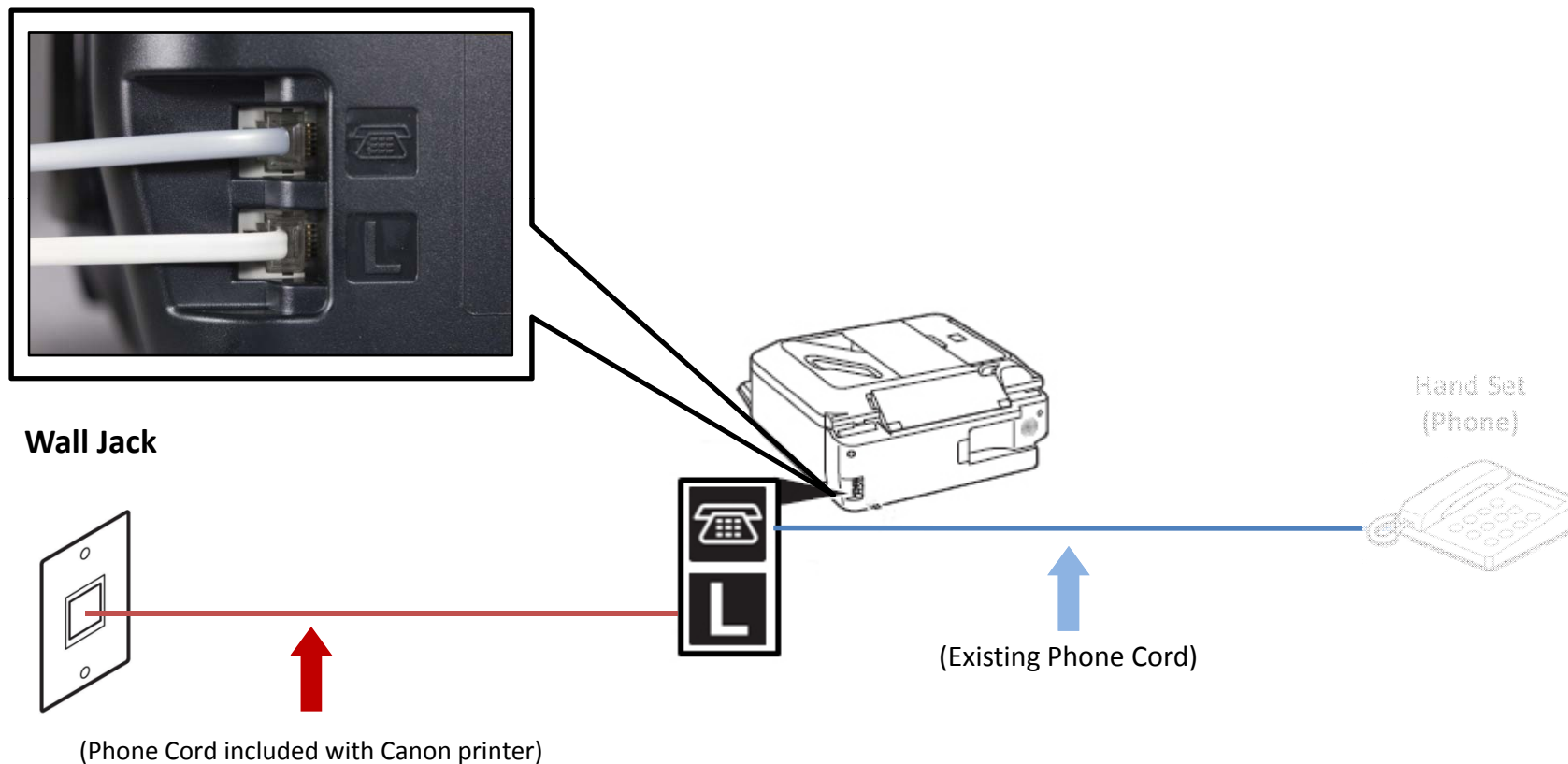
Previous

Next



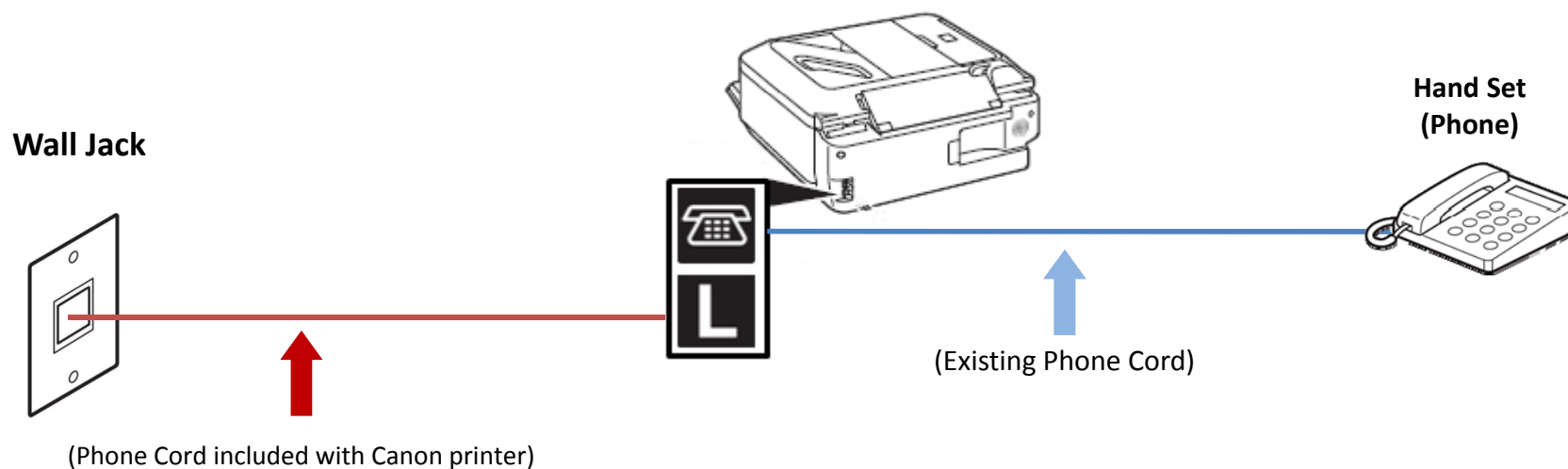
Fax to Phone Line Connection

- Plug the second phone cord into the “telephone” jack located on the rear of the multifunction



Fax to Phone Line Connection

- Plug the second phone cord into the phone





Setting Up The Receive Mode



Return To “Connecting Your Phone/Answering Machine”

Next



Step 1

Turn on the MX330 by pressing the **ON** button.



Step 2

Press the **FAX** button.



Step 3

The fax standby screen will appear.



Step 4

Press **Menu** button.



Step 5

The FAX menu will appear.



Step 6

Press the **OK** button.



Step 7

The “Receive mode settings” screen will appear.



Step 8

Use the **UP** or **DOWN** button to select “TEL priority mode”.



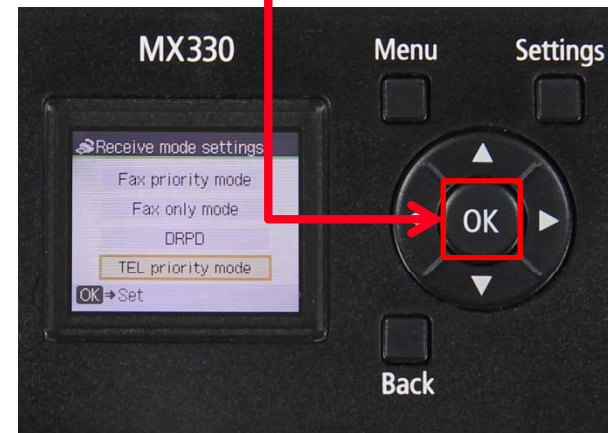
Step 9

Ensure “TEL priority mode” is selected



Step 10

Press the **OK** button



Step 11

The FAX menu will appear.



Step 12

Press the **FAX** button.



Step 13

Your MX330 is now set to TEL priority mode. Notice that the mode is listed on the fax standby screen.



Receiving A Fax

To receive a fax when you are home you will:

- Pick up the handset on the phone connected to the MX330.
- Listen for fax tones.
- When the tones stop hang up the handset.
- The MX330 will receive the fax document.

To receive a fax while you are away:

- The answering machine will answer the call.
- If fax tones are heard by the MX330 it will take over the call and receive the fax document.

IMPORTANT: In order to receive a fax, you must either pick up the handset on a phone that is connected to the MX330 or let your answering machine answer the call.

