



# Distinctive Ring Pattern Detection (DRPD) Fax Line Setup Guide



# Fax Easy Setup

Click [Next](#) to step through this image-friendly version of **Fax Easy Setup**.

---

If you started **Fax Easy Setup**, on the fax machine's operation panel, and prefer to go through this image-friendly version...

## Step 1

Press the FAX button at any screen to go to fax standby mode.

---



## Step 2

Click [Next](#) to proceed through the setup.

---



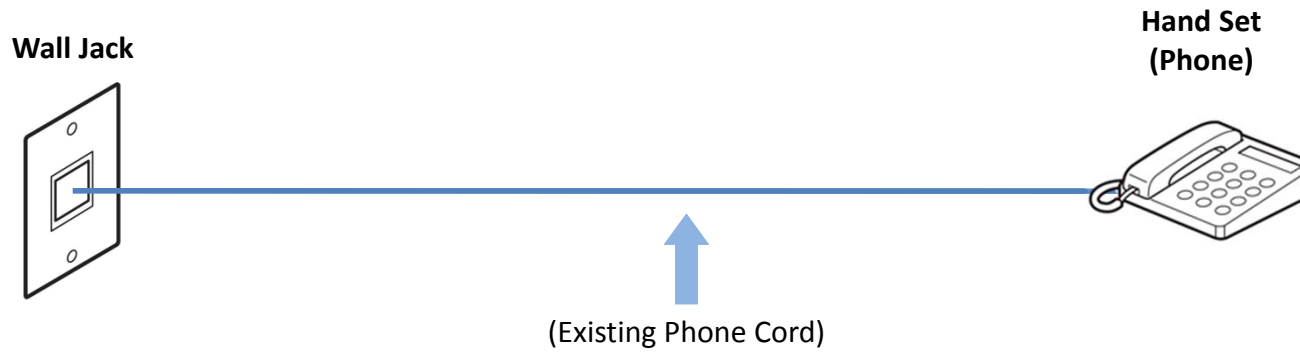


# Connecting The Phone Lines

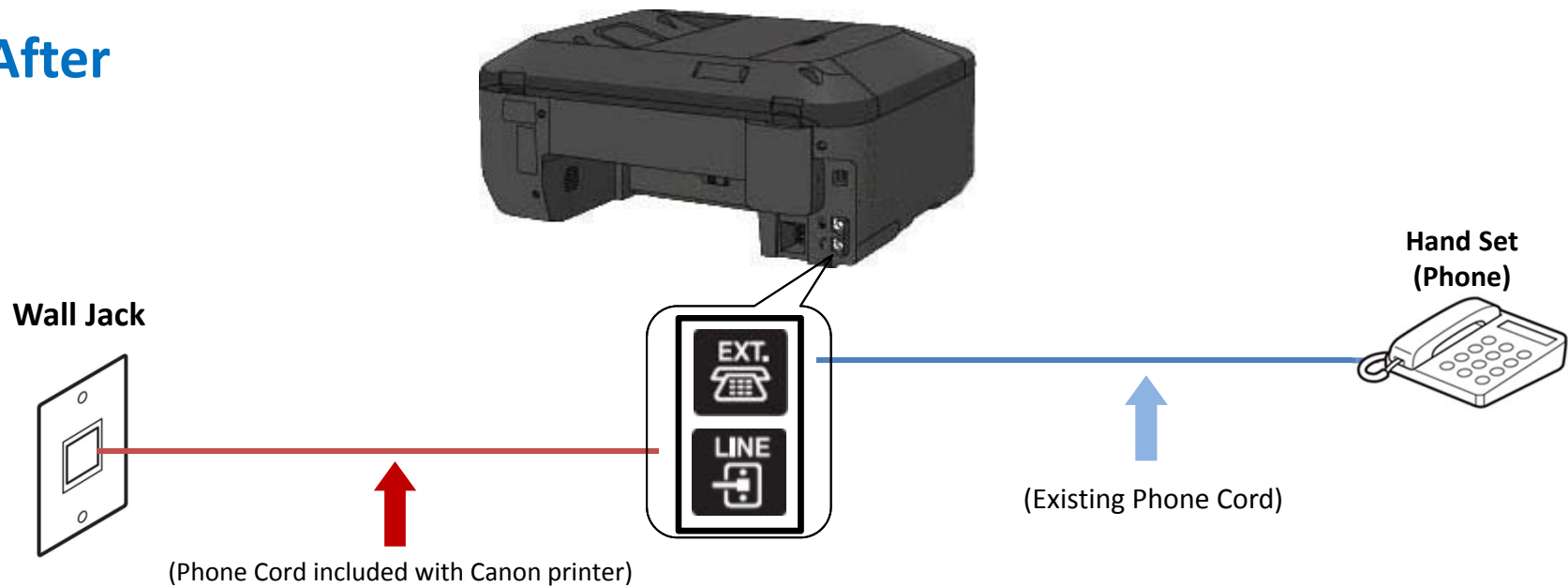


# Fax to Phone Line Connection

**Before**



**After**

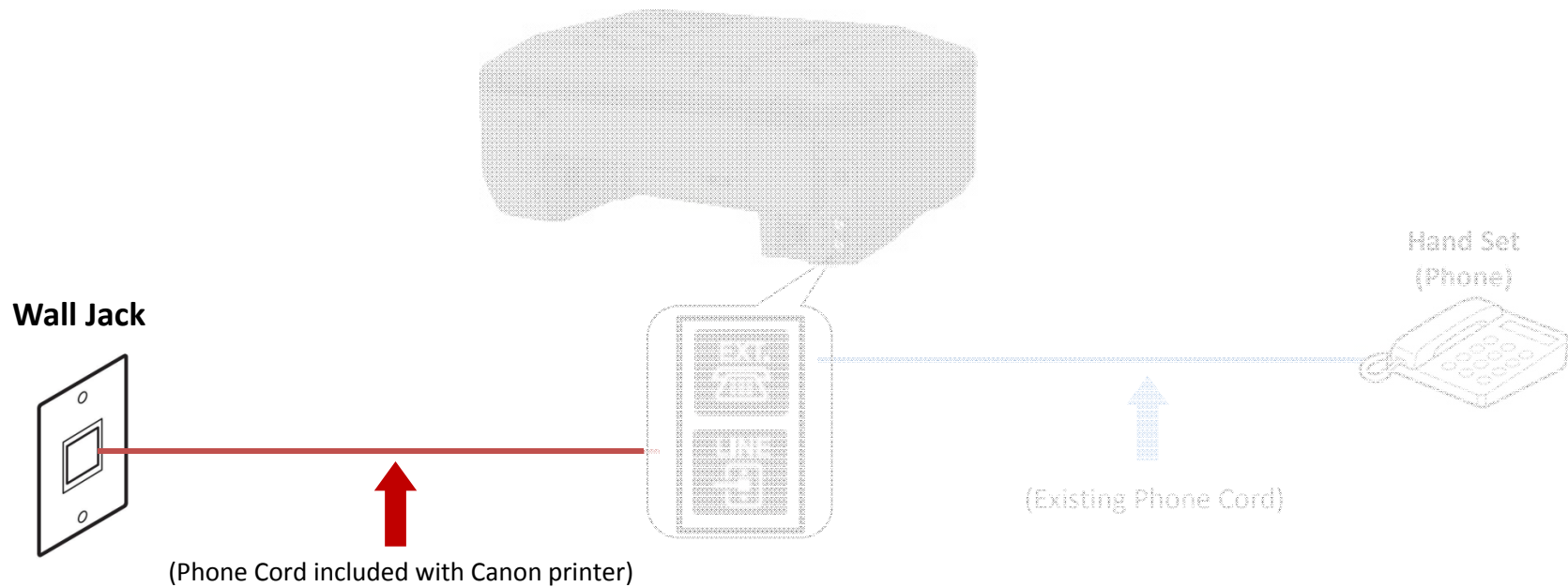


 **Previous**

**Next** 

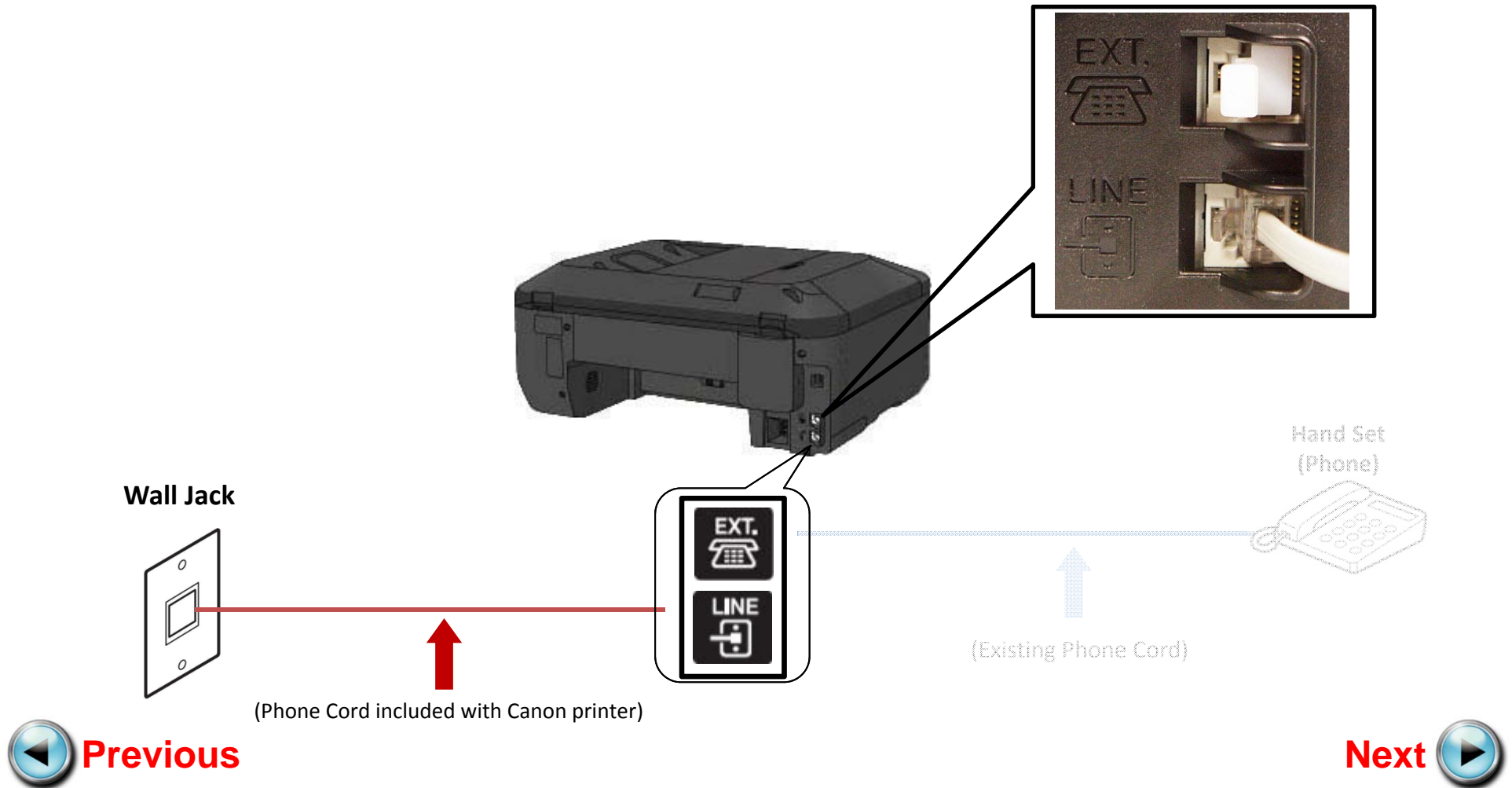
# Fax to Phone Line Connection

- Plug the provided phone cord into the wall jack



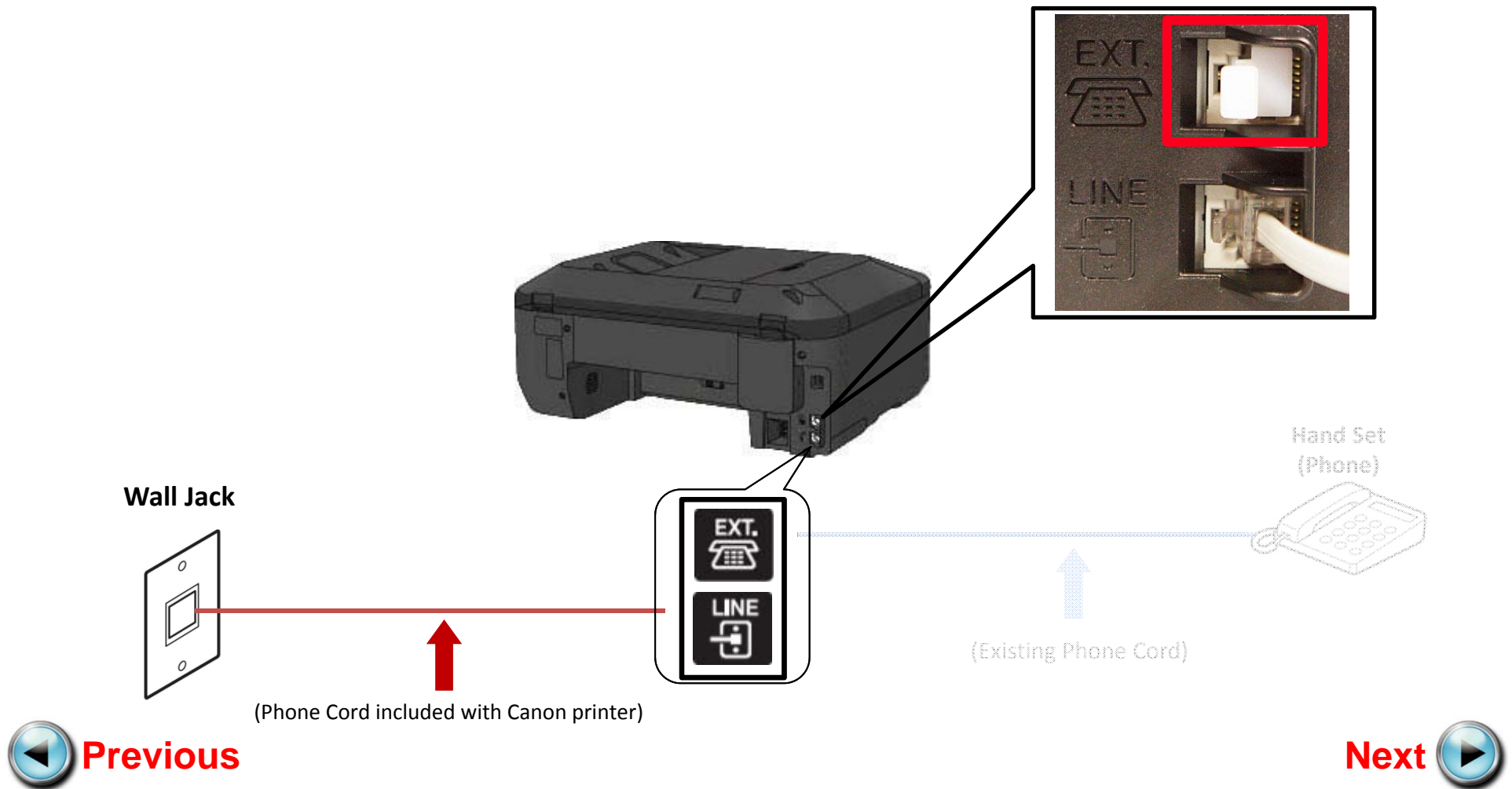
# Fax to Phone Line Connection

- Plug the provided phone cord into the “LINE” jack located on the rear of the multifunction



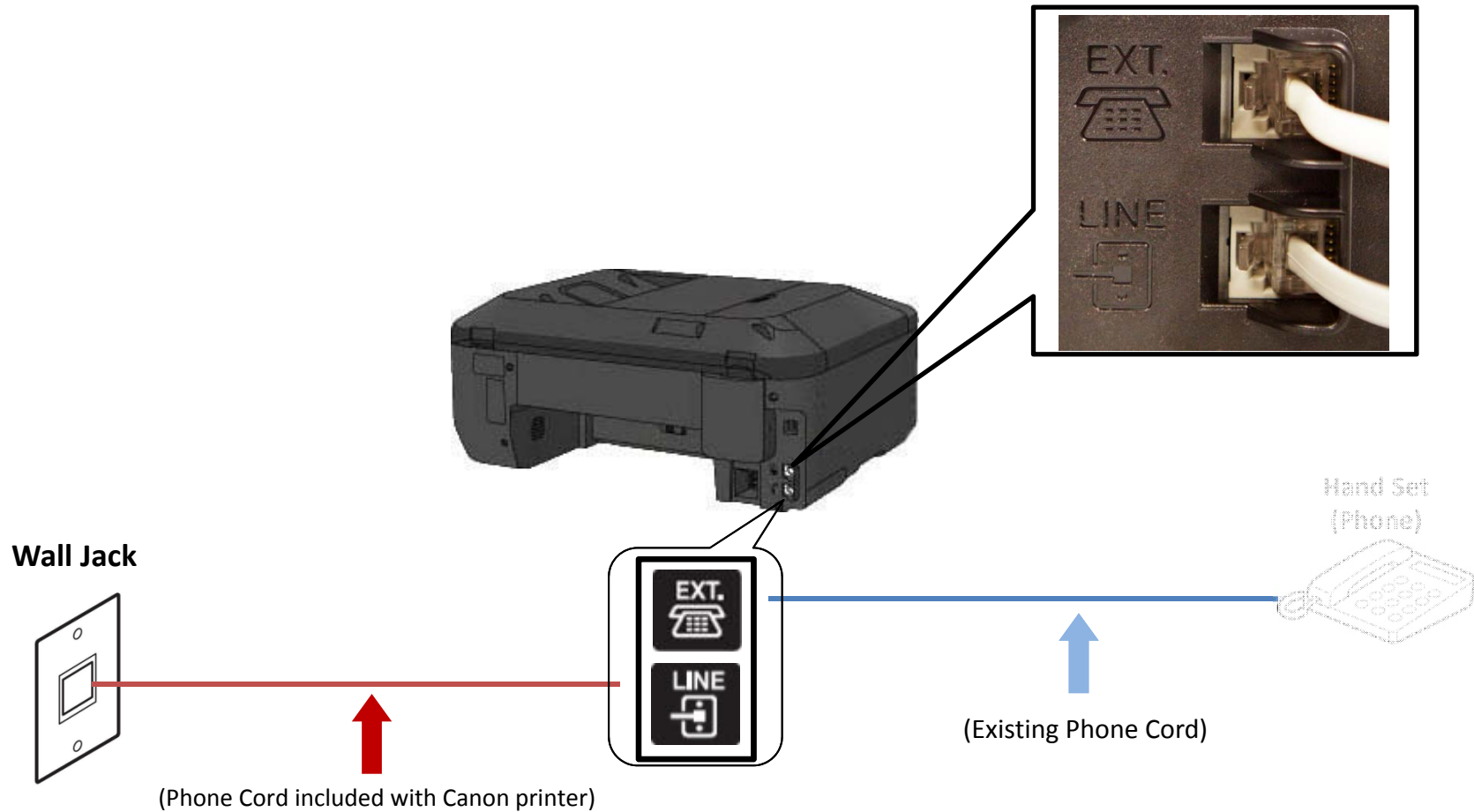
# Fax to Phone Line Connection

- Remove the white plug from the upper jack labeled "EXT."



# Fax to Phone Line Connection

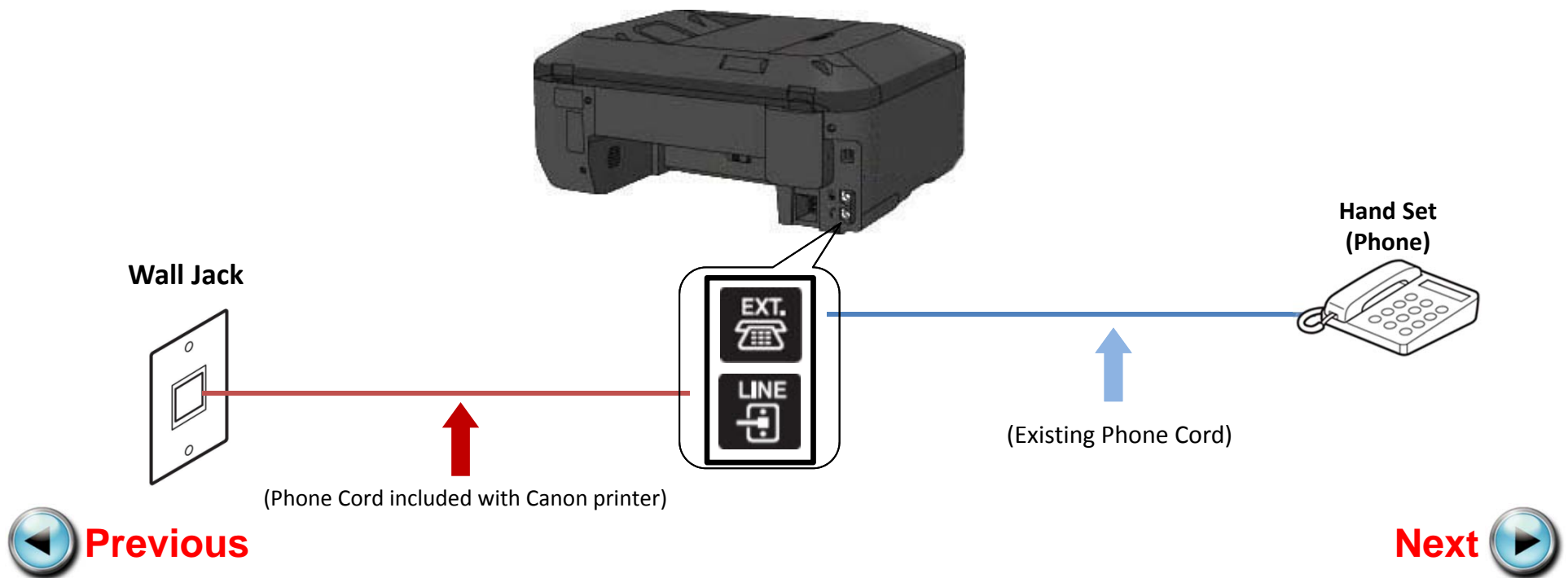
- Plug the second phone cord into the “EXT.” jack located on the rear of the multifunction





# Fax to Phone Line Connection

- Plug the second phone cord into the phone





# Setting Up The Receive Mode



## Step 1

Turn on the MX452 by pressing the **ON** button, if it is not powered on already.



## Step 2

Press the **FAX** button.



## Step 3

The fax standby screen will appear.



## Step 4

Press the **Menu** button.



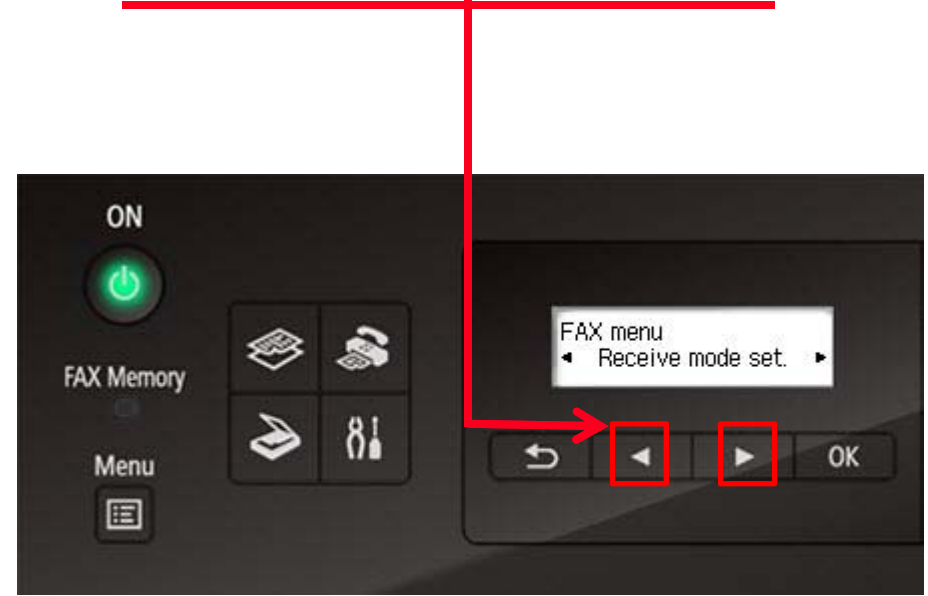
## Step 5

The **FAX menu** screen will appear.



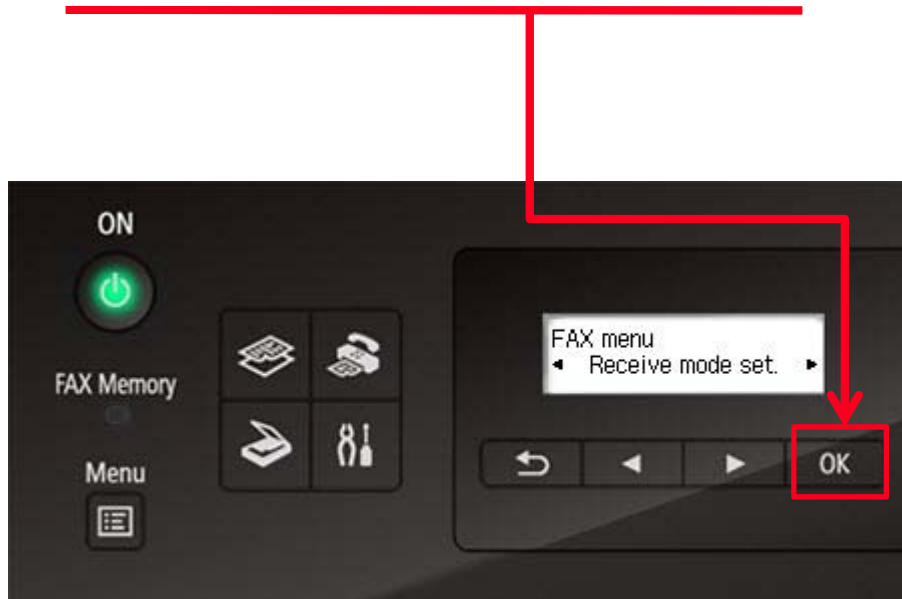
## Step 6

Use the **LEFT** or **RIGHT** button to select "Receive mode set".



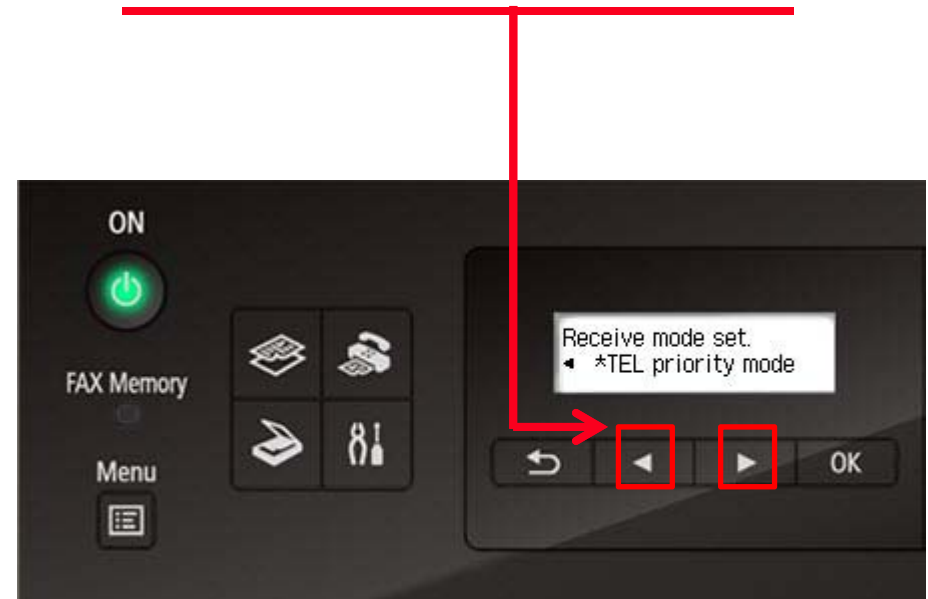
## Step 7

Press the **OK** button.



## Step 8

Use the **LEFT** or **RIGHT** button to select "DRPD".



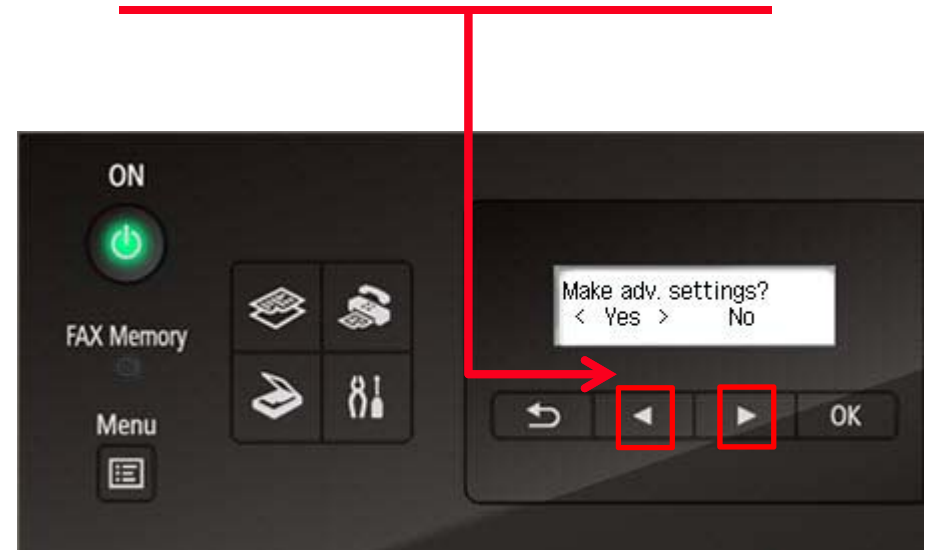
## Step 9

Press the **OK** button.



## Step 10

Use the **LEFT** or **RIGHT** button to select "Yes" at **Make adv. settings** screen.



## Step 11

Press the **OK** button.



## Step 12

Use the **LEFT** or **RIGHT** button to select "DRPD: FAX ring pat."





## Step 13

Press the **OK** button.



## Step 14

Use the **LEFT** or **RIGHT** button to select the ring pattern assigned to your fax number. Your phone service provider assigns this pattern.



**Note:** The optional ring patterns are:

- Double ring
- Short-short-long
- Short-long-short
- Normal ring

## Step 15

Press the **OK** button.



## Step 16

Press the **FAX** button to return to standby mode.



## Step 17

**Fax mode** and the ink level status will flash across the screen.



## Step 18

You will return to the "Fax standby screen" and the receive mode will appear on the screen.



# Receiving A Fax

When a person dials your DRPD number the MX452 will recognize the distinctive ring pattern and will answer the call.

It will begin receiving the fax automatically.

You do not need to be home or interact with the MX452 in order to receive a fax.

