



Dedicated Fax Line Setup Guide

MX712



Fax Easy Setup

Click [Next](#) to step through this image-friendly version of **Fax Easy Setup**.

If you started **Fax Easy Setup**, on the fax machine's operation panel, and prefer to go through this image-friendly version...

Step 1

Press the **FAX** button at any screen to go to fax standby mode.



Step 2

Click [Next](#) to proceed through the setup.



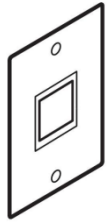
 **Previous**

Next 

Connecting The Phone Lines

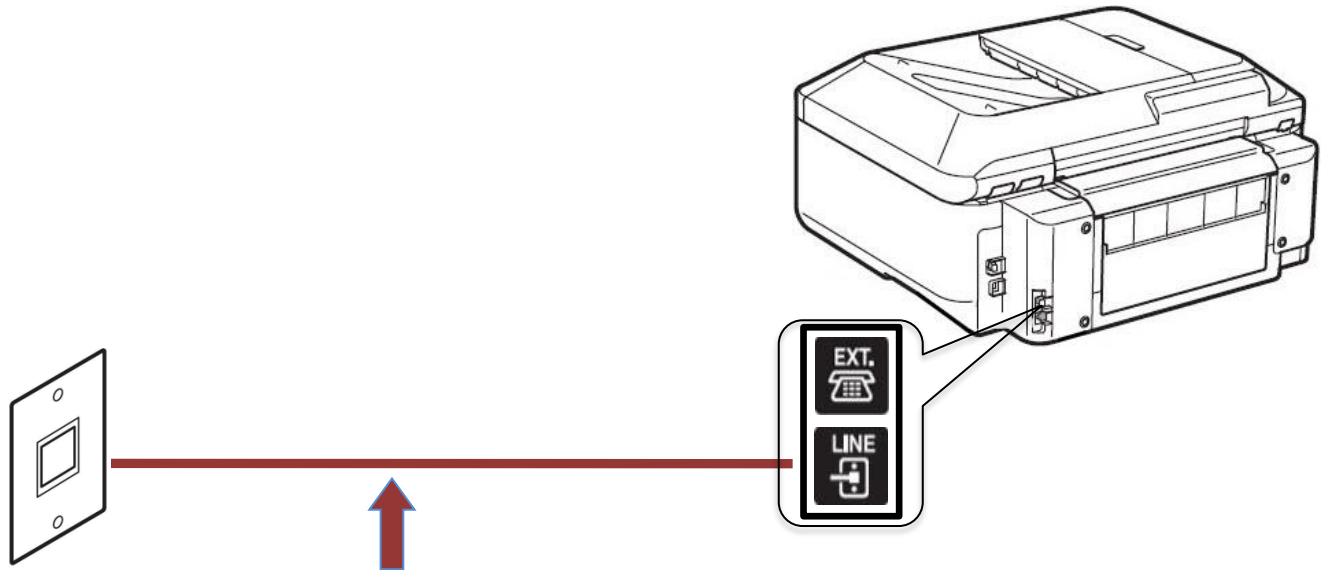
Connecting The Phone Lines

Before



Wall jack

After



(Phone Cord included with Canon printer)

If Your Wall Plate Has Two Jacks

Use the jack that supports the fax line.



If Your Wall Plate Has One Jack For Two Lines

If your wall jack provides one jack for two phone lines, it would be best to use a “2 Line 3 Way Adapter.” This adapter can be purchased at most stores that sell electronics. This device creates three plugs where there was one. One jack will be for your voice line. The other jack can be used for your fax transactions. In most cases, line 1 (L1) is used for phone calls; L2 is used of faxing. The third jack (L1+L2) allows access to both lines. This is where you would plug in a 2-line telephone, if available.

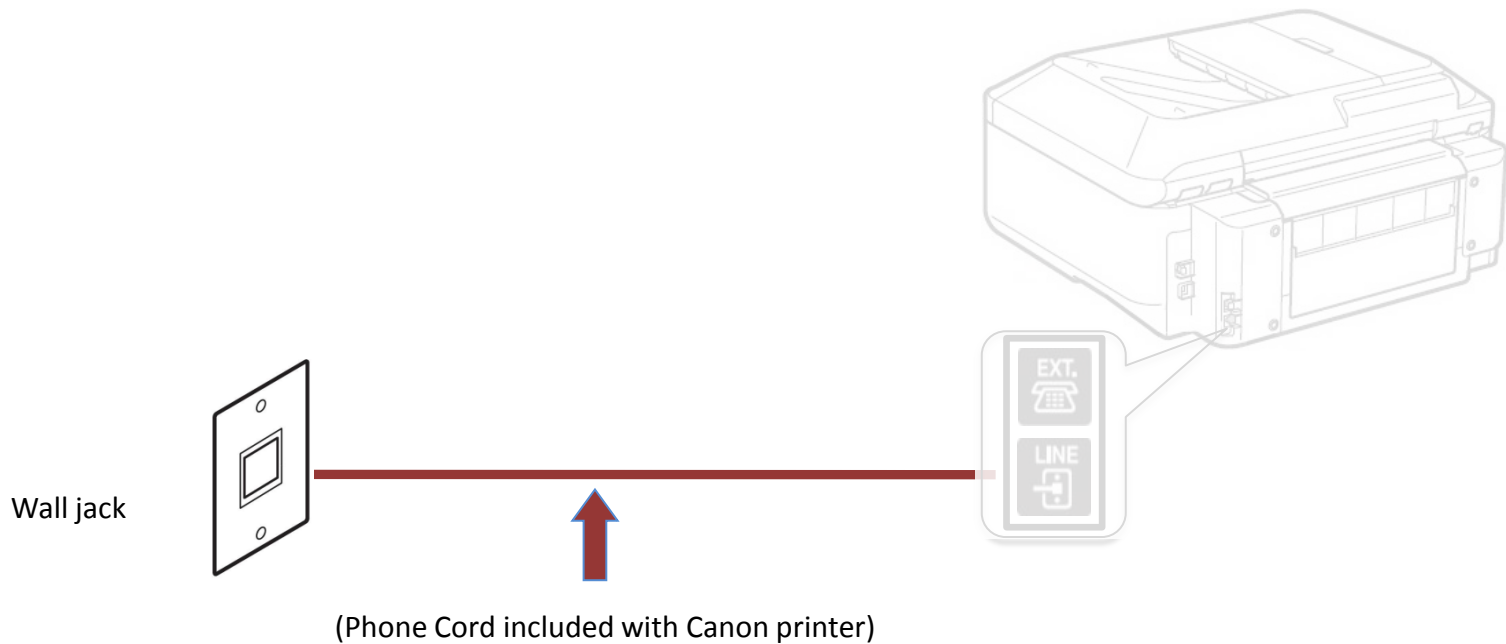


The L1 jack is usually your voice line

The L2 jack is usually your fax line

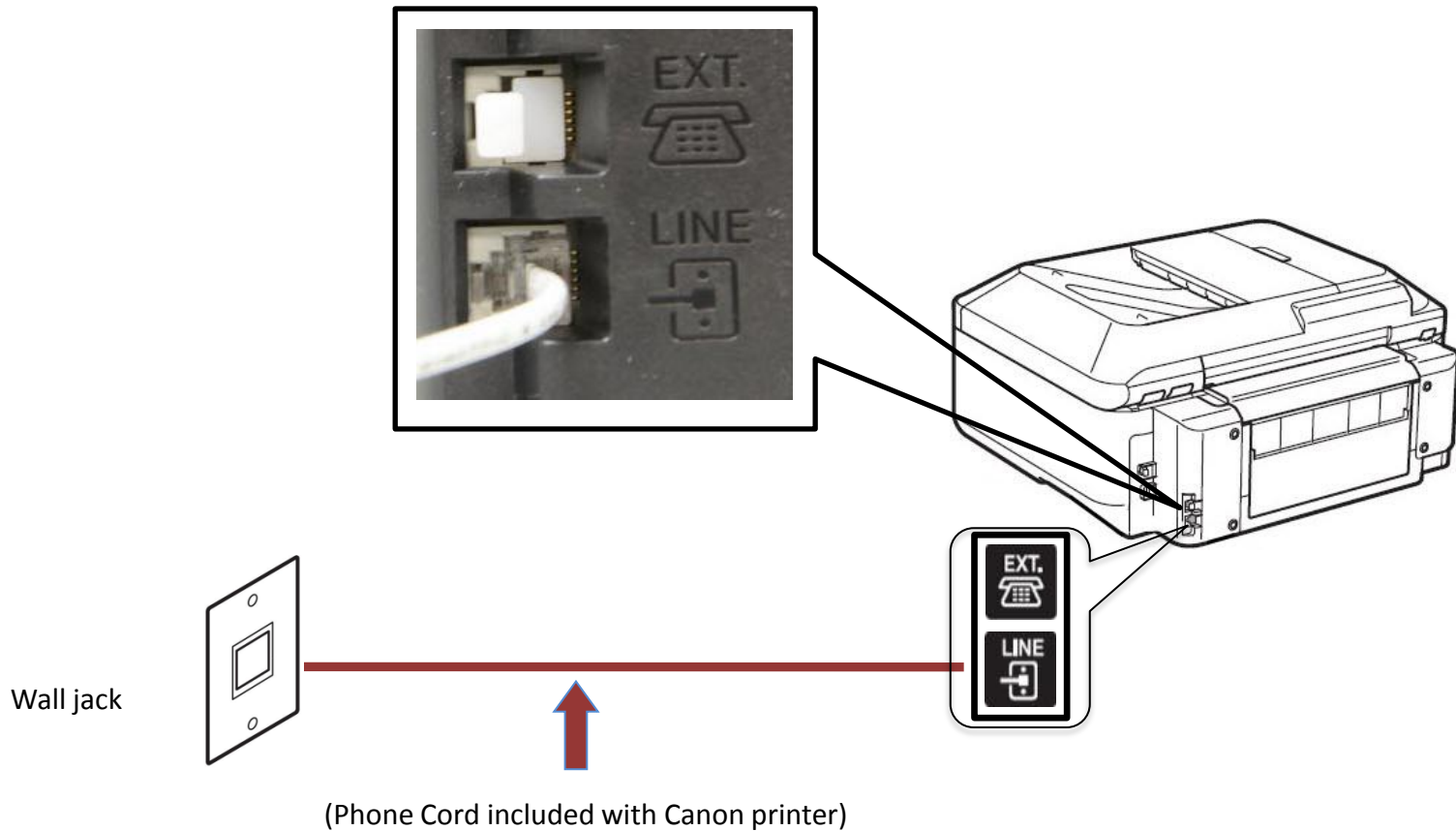
Fax to Phone Line Connection

First, connect one end of the supplied telephone cord to the telephone jack on the wall.



Fax to Phone Line Connection

Next, connect the other end of the supplied telephone cord to the lower jack (labeled "LINE") on the MX712.



Setting Up The Receive Mode

Step 1

Turn on the MX712 by pressing the **ON** button if the machine is not powered on already.



Step 2

Press the **FAX** button.



Step 3

The fax standby screen will appear.



Step 4

Press the center **FUNCTION** button.



Step 5

The **Receive mode settings** screen will appear.



Step 6

Use the **UP** or **Down** button to highlight "FAX only mode".



Step 7

Ensure that “FAX only mode” is highlighted.



Step 8

Press the **OK** button.



Step 9

Your MX712 is now set to FAX only mode. Notice that the mode is listed on the fax standby screen.



To Receive A Fax

When a call comes in on the fax line, the MX712 will answer the call and begin receiving the fax.

You do not have to be home or interact with the MX712 to receive a fax.

