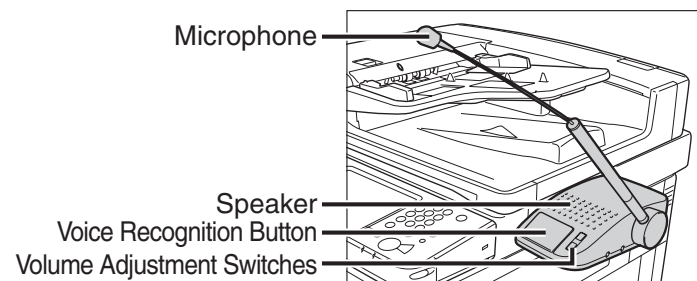


Voice Operation Quick Guide - Using the Voice Navigation Mode

The Voice Navigation mode enables you to hear Voice Navigation instructions when operating your multifunctional imageRUNNER ADVANCE (hereinafter referred to as "the machine"). The Voice Navigation mode also includes a voice recognition function, which enables you to set the various functions of the machine using your own voice.

Before You Start Using This Product

- Confirm that the main power of the machine is turned ON. For more information, see the instruction manuals that came with the machine.
- Confirm that the voice unit is attached to the machine.
- Make sure that you are on the Regular Copy Basic Features screen.



NOTE

For information on operating the machine in the Voice Navigation mode, see the *Voice Operation Kit User's Guide*.

Using the Voice Navigation Mode

Starting the Voice Navigation Mode

- 1 Press and hold  (Reset) or the Voice Recognition button for more than five seconds.**

NOTE

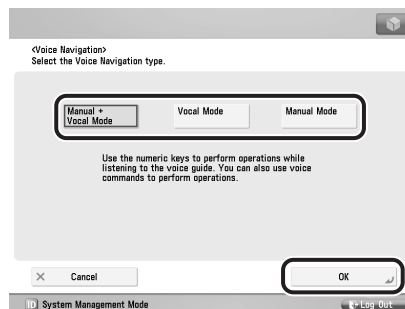
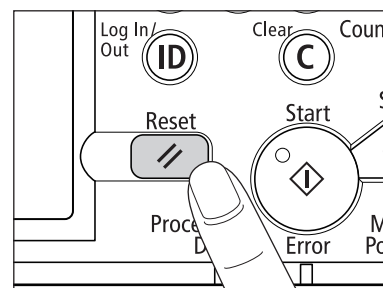
If an external switch is installed, press and hold the external switch for more than five seconds to start the Voice Navigation mode.

- 2 Select the desired Voice Navigation mode → press [OK].**

[Manual + Vocal Mode]: Enables you to hear Voice Navigation instructions from the machine, as well as control the machine using your own voice.

[Vocal Mode]: Enables you to operate the machine using your own voice. Perform the necessary preparations for making copies, such as placing your originals.

[Manual Mode]: Enables you to hear Voice Navigation instructions from the machine while operating the machine from the control panel.



NOTE

- You can also select the desired Voice Navigation mode by pressing the Voice Recognition button, and saying the name of the desired mode.
- You can set the machine to automatically start the Manual and Vocal mode, Manual mode, or Vocal mode, instead of displaying the Voice Navigation Selection screen. For more information, see the *Voice Operation Kit User's Guide*.

Stopping the Voice Navigation Mode

Press and hold  (Reset) or the Voice Recognition button for more than five seconds.

NOTE

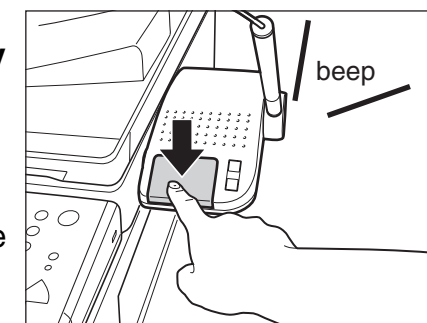
If an external switch is installed, press and hold the external switch for more than five seconds to stop the Voice Navigation mode.

Voice Recognition

Press the Voice Recognition button → say the desired voice command clearly after the tone.

If an external switch is installed, press the external switch instead of the Voice Recognition button.

You will hear a message corresponding to the command you said, and the command is executed.



IMPORTANT

- If you are not sure which words are recognizable, say "voice command list" to display the Voice Command List screen. (See "Voice Command List," on the back of this guide.)
- Voice commands cannot be recognized while the Voice Command List is displayed.
- Say your command clearly and at a distance of no more than 5 7/8" (15 cm) away from the microphone.
- Do not touch the black tip of the microphone when you speak into it. Touching the black tip may cause interference, and result in your voice not being recognized.
- Say your command after you press the Voice Recognition button, and hear the tone. If you say your command before you hear the tone, it will not be recognized.
- Say "voice command list" to display a list of the recognizable phrases and how to pronounce them on the touch panel display.
- The success rate of recognition may vary, according to your voice and your surroundings.
- Even if you say a recognizable word, it may not be recognized if you say filler words before or after the command, such as "um ...," or "please."
- It is not necessary to break up words into syllables when saying them.
- If you do not say anything for a certain period of time after pressing the Voice Recognition button, recognition will be canceled (as voice recognition has timed out). Press the Voice Recognition button, wait for the tone, and then say your command again.

NOTE

Confirm your settings before copying.

Voice Operation Quick Guide - Voice Command List

This is a partial list of the phrases that can be recognized in the Voice Navigation mode. If you want to use Favorite Settings, it is necessary to register settings in memory keys in advance. For more information on Favorite Settings, see the instruction manuals that came with the machine. The phrases "voice mode help" and "voice command list" can be recognized on any screen when you are using the Voice Navigation mode.

Word/Item Name	Reading
Starting/Stopping Copying (Start, Stop)	
Start Copy	Start copy
Stop Copy	Stop
Entering the Number of Copies Displayed on the Basic Features Screen	
Number of Copies	1 copy, 2 copies, 3 copies
Copy Ratio Displayed on the Basic Features Screen	
Copy Ratio	Copy ratio
Direct or [1:1]	Direct
Select Paper Displayed on the Basic Features Screen	
Select Paper	Select paper
Color Selection Displayed on the Basic Features Screen	
Select Color	Select color
Finishing Displayed on the Options Screen	
Finishing	Finishing
2-Sided Displayed on the Options Screen	
2-Sided	Double-sided
Density Displayed on the Options Screen	
Density	Density
Original Type Displayed on the Options Screen	
Original type	Original type
Zoom Settings Displayed on the Zoom Settings Screen	
Auto	Auto ratio
Custom Copy Ratio	99%, 100%, 101%
B4 ► A3	From B4 to A3
B5 ► A4	From B5 to A4
B5 ► LTR	From B5 to Letter
LGL ► 11x17	From Legal to 11 by 17
A4 ► B4	From A4 to B4
LTR ► B4	From Letter to B4
A5 ► B5	From A5 to B5
LTR ► 11x17	From Letter to 11 by 17
A4 ► A3	From A4 to A3
LTR ► A3	From Letter to A3
B5 ► B4	From B5 to B4
A5 ► A3	From A5 to A3
STMT ► 11x17	From Statement to 11 by 17
MAX.	Maximum
A3 ► B4	From A3 to B4
A4 ► B5	From A4 to B5

Word/Item Name	Reading
LTR ► B5	From Letter to B5
B4 ► A4	From B4 to A4
B4 ► LTR	From B4 to Letter
B5 ► A5	From B5 to A5
LGL ► LTR	From Legal to Letter
11x17 ► LGL	From 11 by 17 to Legal
11x15 ► LTR	From 11 by 15 to Letter
A3 ► A4	From A3 to A4
A3 ► LTR	From A3 to Letter
B4 ► B5	From B4 to B5
11x17 ► LTR	From 11 by 17 to Letter
A3 ► B5	From A3 to B5
A3 ► A5	From A3 to A5
11x17 ► STMT	From 11 by 17 to Statement
MIN.	Minimum
Direct	Direct
Paper Selection Displayed on the Paper Select Screen	
Auto	Auto
Paper Drawer 1 to 7	Paper drawer X ^{*1}
Finishing Displayed on the Screen for Selecting the Type of Finishing Mode	
Collate (Page order)	Collate
Group (Same pages)	Group
Staple	Staple
Hole Punch	Hole punch
Fold	Fold
Offset	Offset
Rotate 90 Degrees	Rotate 90 degrees
Face Up/Face Down	Face up or face down
Density Displayed on the Density Adjustment Screen	
Darker ►	Darker density
Lighter ◄	Lighter density
Auto	Auto
2-Sided Copying Displayed on the Screen for Selecting the Type of Two-Sided Copying	
1 ► 2-Sided	Single-sided to double-sided
2 ► 2-Sided	Double-sided to double-sided
2 ► 1-Sided	Double-sided to single-sided

Word/Item Name	Reading
Book ► 2-Sided	Book to double-sided
Original Type Selection Displayed on the Original Type Selection Screen	
Text/Photo/Map	Text photo map
Printed Image	Printed image
Photo Printout	Photo printout
Text	Text
Color Selection Displayed on the Color Mode Selection Screen	
Auto-Color Select	Auto color select
Full Color	Full color
Black	Black and white
Single Color	Single color
Two Colors	Two colors
Favorite Settings	
Favorite Settings 1 to 9	Favorite settings X ^{*1}
Check Settings	Check settings
Other Frequently Performed Operations	
Voice Mode Help	Voice mode help
Voice Command List	Voice command list
OK	Ok
Next	Next
Cancel Settings	Cancel settings
Set Details	Set details
Close	Close
Confirm Settings	Confirm settings
Back	Back
Stop	Stop
Cancel	Cancel
▲	Previous page
▼	Next page
Reset	Reset
Settings/Registration	Settings registration
Voice Navigation Settings	Voice navigation settings

This list is of the phrases that are recognizable in the Vocal mode. The recognizable phrases may differ if the Manual and Vocal mode is set. For more information, see the *Voice Operation Kit User's Guide*.

*1 Replace 'X' with the desired number.

