



Installing Your Printer to the Network for the First Time

PIXMA iP110

Windows OS

Wireless Setup Using the USB Cable

Installing Your Printer to Your Network for the First Time

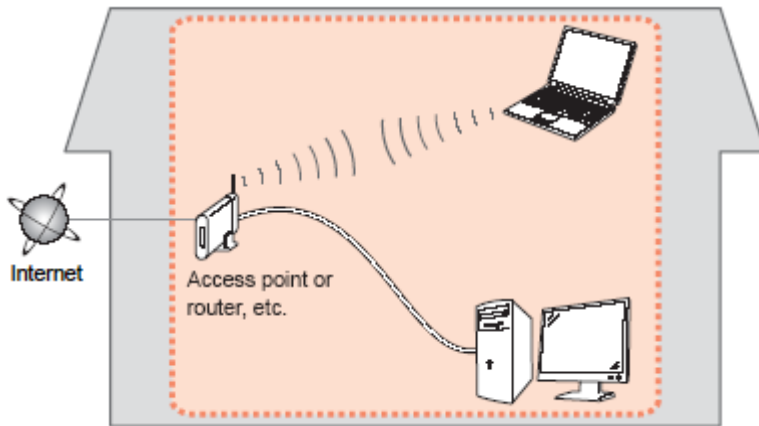
PIXMA iP110
Windows OS

Preparing to Connect My Printer to My Network	3
Network Requirements Notes	3
on Wireless Connection	4
Installing the Drivers & Software	5

Preparing to Connect the Printer To the Network

Network Requirements

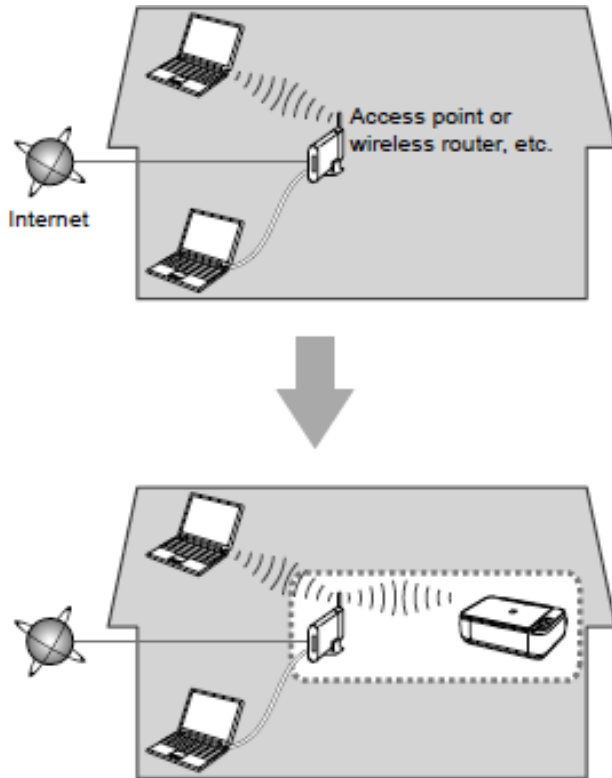
Before connecting the machine to the network, make sure that configuration of the computer and access point or router is complete, and that the computer is connected to the network.



Wireless Connection

Before connecting the machine to the network, the computer needs to be connected to the network. Make sure that configuration of the computer and access point or router is complete.

Preparing to Connect the Printer To the Network



Notes on Network Connection

- The configuration, router functions, setup procedures and security settings of the network device vary depending on your system environment. For details, refer to your device's instruction manual or contact its manufacturer.
- In an office setup, consult your network administrator
- If you connect to a network that is not protected with security measures, there is a risk of disclosing data such as your personal information to a third party.
- Place the machine and computer on the same network segment.

Installing the Drivers & Software

Click **Next** on the initial screen.

Installing the Drivers & Software

Continue following on-screen instructions. On the **Printers on Network List** screen, check the **Setting printer could not be found on the list** checkbox and click **Next**.

Canon PIXMA MG2900 series

Printers on Network List

Serial Number	MAC Address	IP Address

Setting printer could not be found on the list

Update

1. To set a printer on the network, select one from the above printers list, and then click [Next].
Serial number can be found on the back of the printer or the Letter of Guarantee.
2. If the setting printer could not be found on the above list, turn on the printer and click [Update].
3. If the printer could not still be found, select [Setting printer could not be found on the list], and the click [Next].

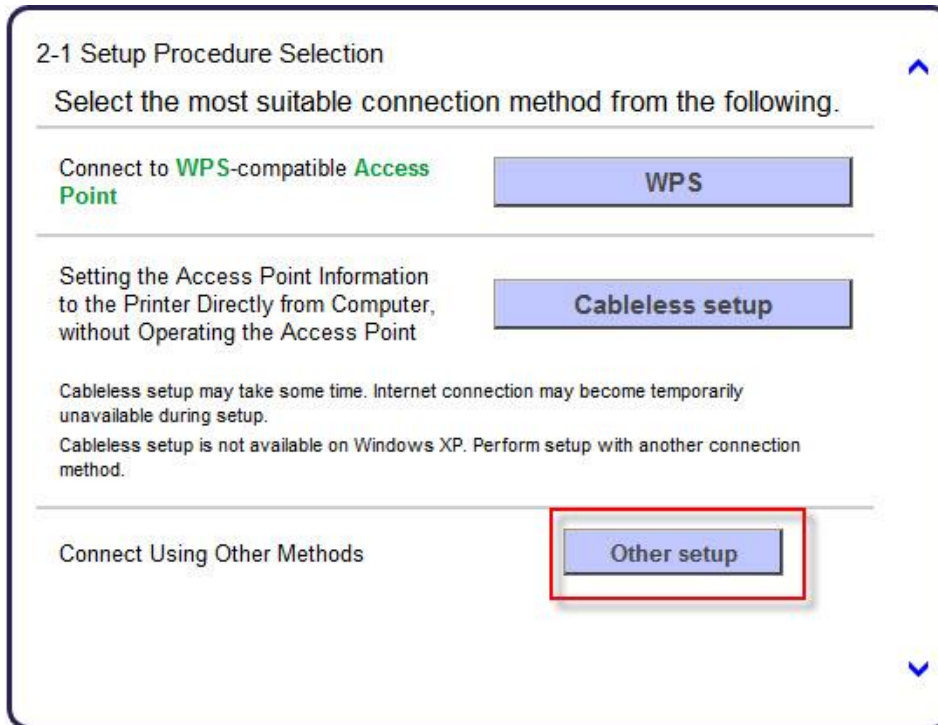
Back

Next

Installing the Drivers & Software

Continue to follow on-screen instructions.

Select **Other setup** on the **Setup Procedure Selection** screen (2-1).

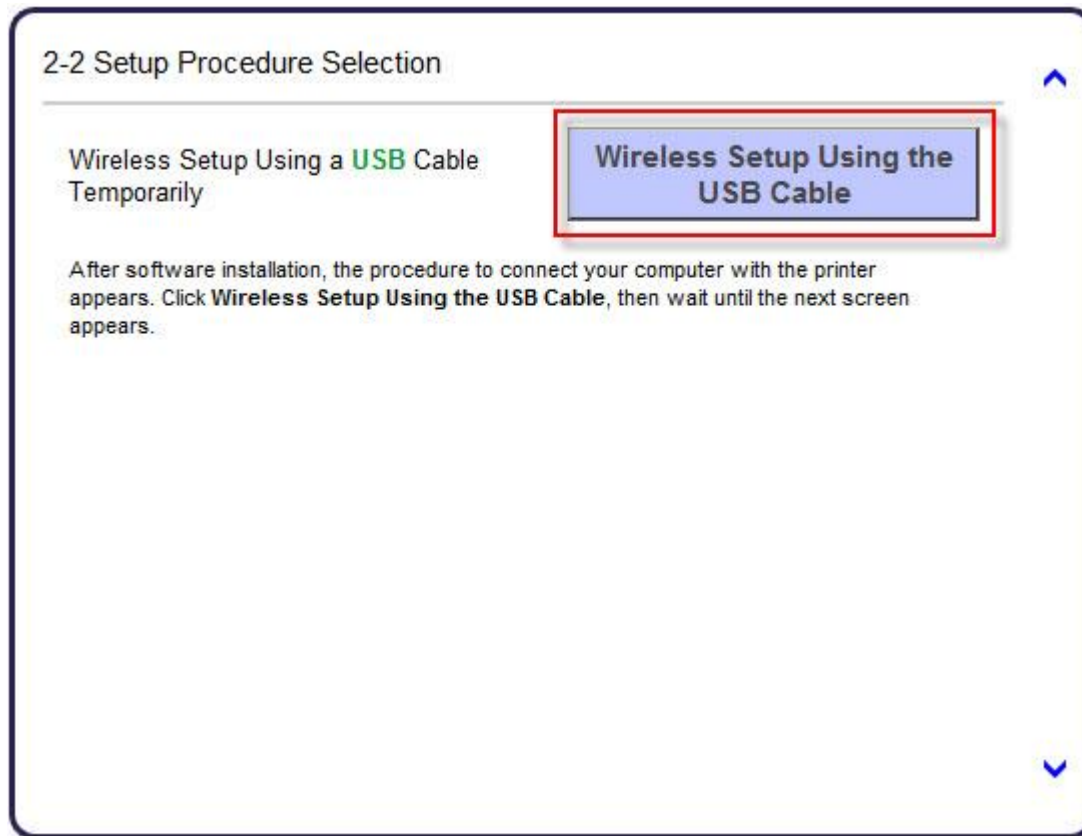


If the Install .NET Framework screen appears, Click Yes



Installing the Drivers & Software

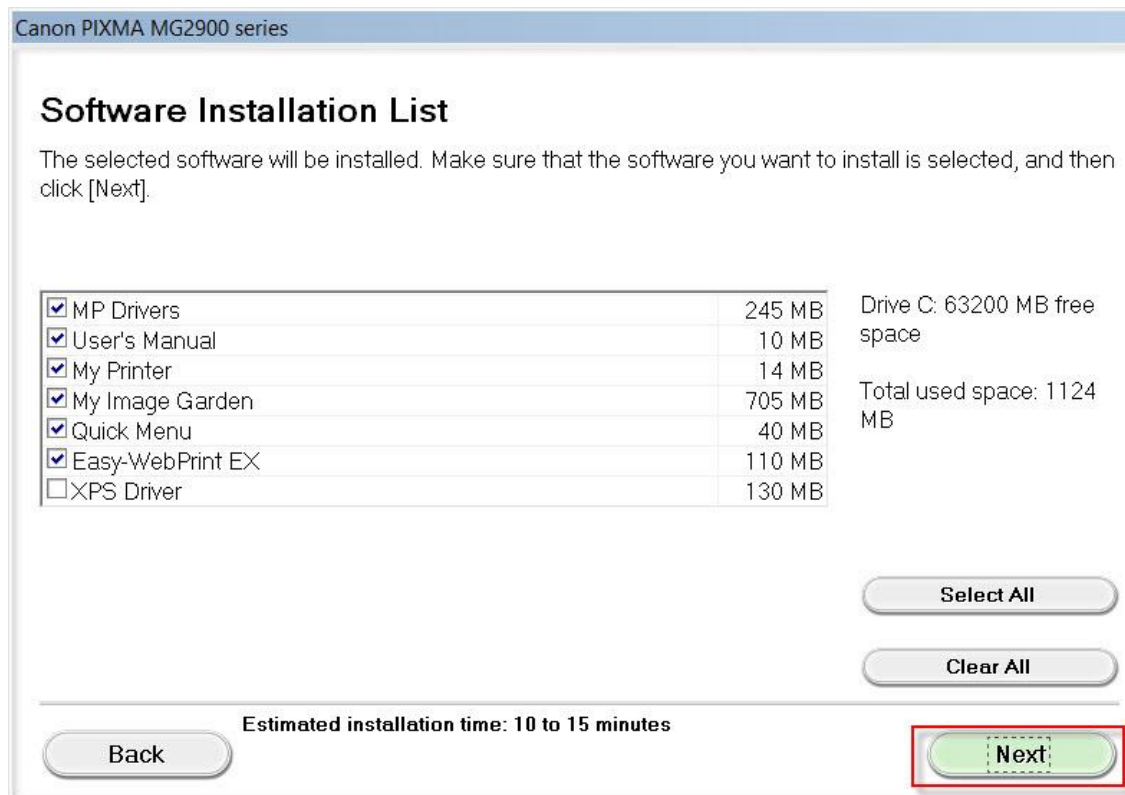
Select Wireless Setup Using the USB Cable on the **Setup Procedure Selection** screen. (2-2).



Installing the Drivers & Software

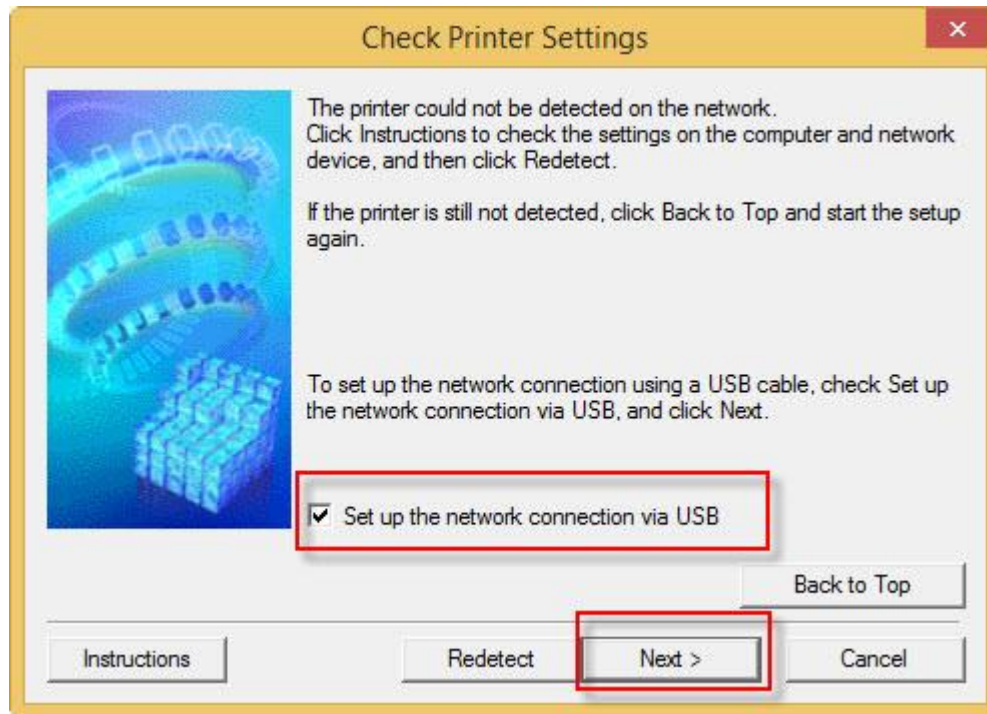
Continue following on-screen instructions. On the **Software Installation List**, select *software to install and click **Next**.

***MP Drivers** is required and cannot be deselected. We recommend installing **My Image Garden** and **Quick Menu** to take full advantage of the printer's features.



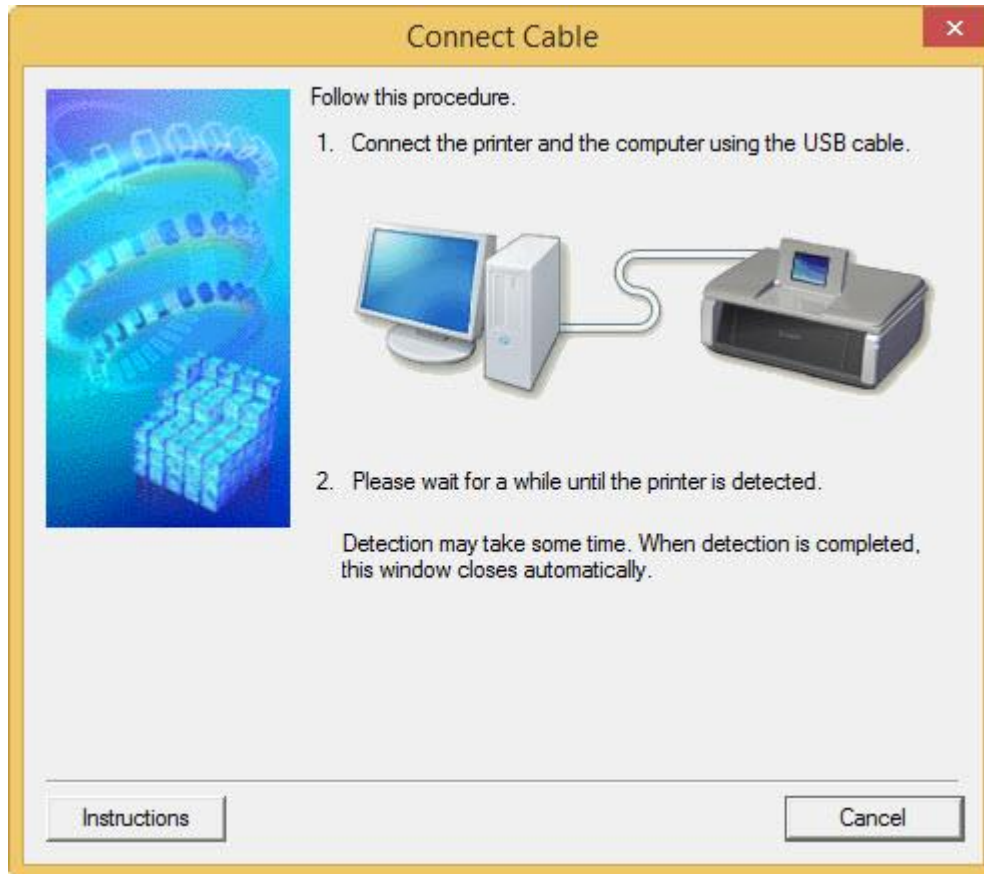
Installing the Drivers & Software

Carefully follow on-screen instructions. When the **Check Printer Settings** screen appears, check the **Set up the network connection via USB** checkbox. Click **Next**



Installing the Drivers & Software

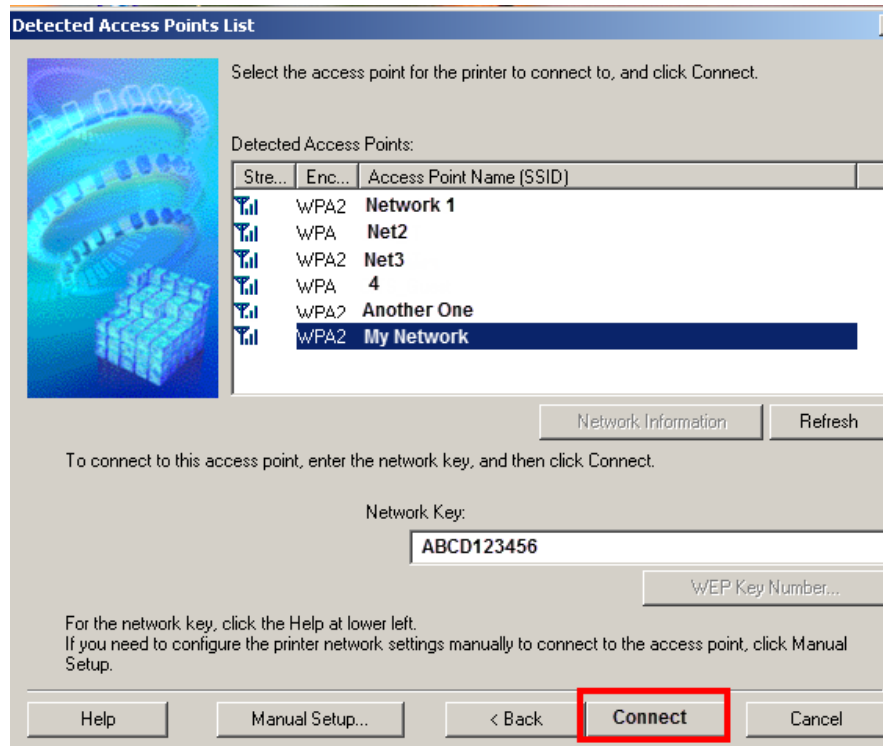
Connect the USB Cable when the **Connect Cable** window appears. The window will close once the printer is detected.



Installing the Drivers & Software

If the **Detected Access Points List*** appears, select the one you wish to connect to, enter the network key and click **connect**.

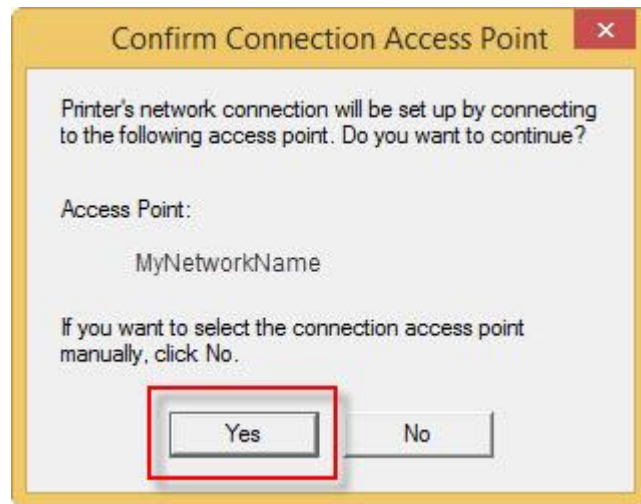
*This screen normally appears if you have multiple access points or multiple access points exist in your immediate area. For details on how to check the Access Point name/network name (SSID) and network key, refer to the manual supplied with your access point or contact its manufacturer.



Installing the Drivers & Software

If the **Confirm Connection Access Point*** screen appears, verify the information then click **Yes**

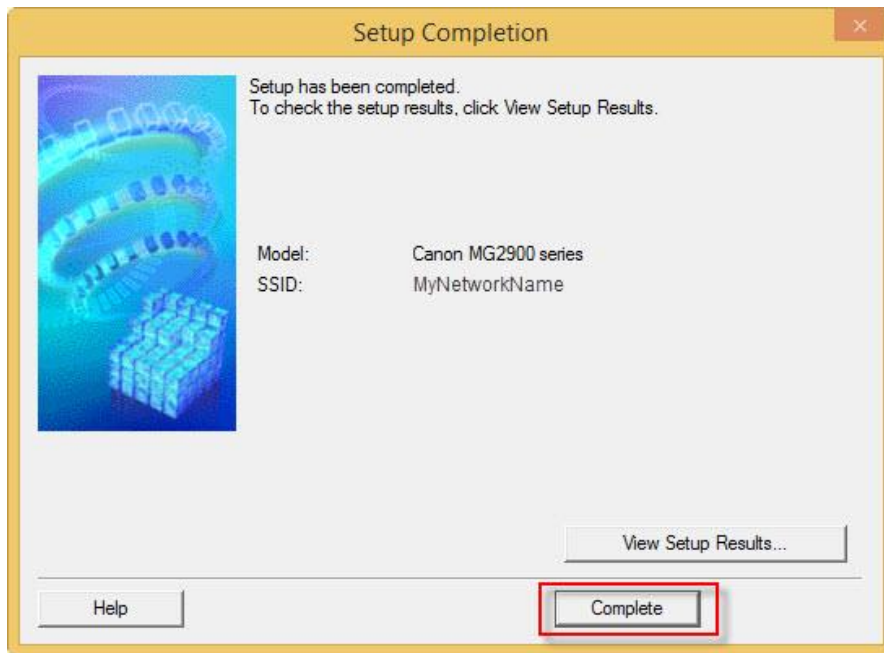
*This screen normally appears when you have only one access point



Installing the Drivers & Software

Continue following on-screen instructions.

When the **Setup Completion** dialog box appears, click **Complete**.



At this point, setup of the printer and network is complete. Continue to follow any remaining on-screen instructions to finish and exit the setup program.