



# **Installing Your Multifunction to Your Network**

**PIXMA MG3620**

**Mac OS**

# Setup and Installation

## Setup and Installation

The instructions contained in this document apply equally to first-time installations, adding the printer to additional computers in the Wireless Network and for re-installations after a Router or Network change.

To use the machine wirelessly with a computer, the printer must be connected to the Wireless LAN and software including the drivers needs to be copied (installed) to the computer's hard disk. Installation time varies depending on the computer environment or the number of application software to be installed.

### **IMPORTANT**

- Log on as the administrator (or a member of the Administrators group).
- Quit all running applications before software installation.
- Do not switch users during the installation process.
- Internet connection may be required during the installation. Connection fees may apply. Consult the internet service provider.
- It may be necessary to restart your computer during the installation process. Follow the on-screen instructions.  
• The installation resumes once your computer has restarted.
- If the firewall function of your security software is turned on, a warning message may appear that Canon software is attempting to access the network. If such a warning message appears, set the security software to always allow access.

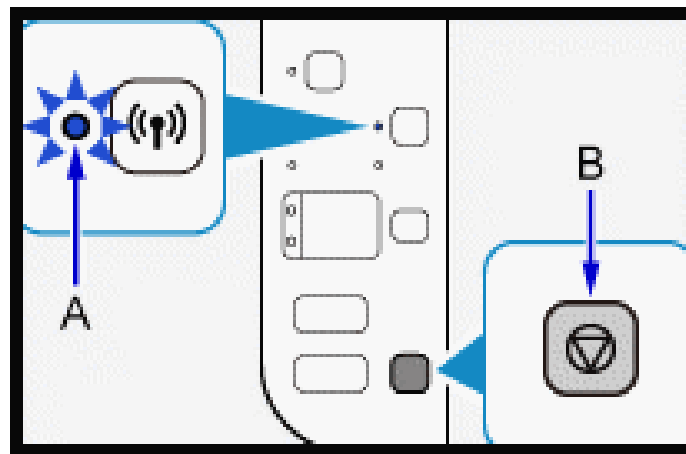
# Connecting to the Wireless LAN

Prior to installing drivers and printer software, the printer must be connected to the Wireless LAN.

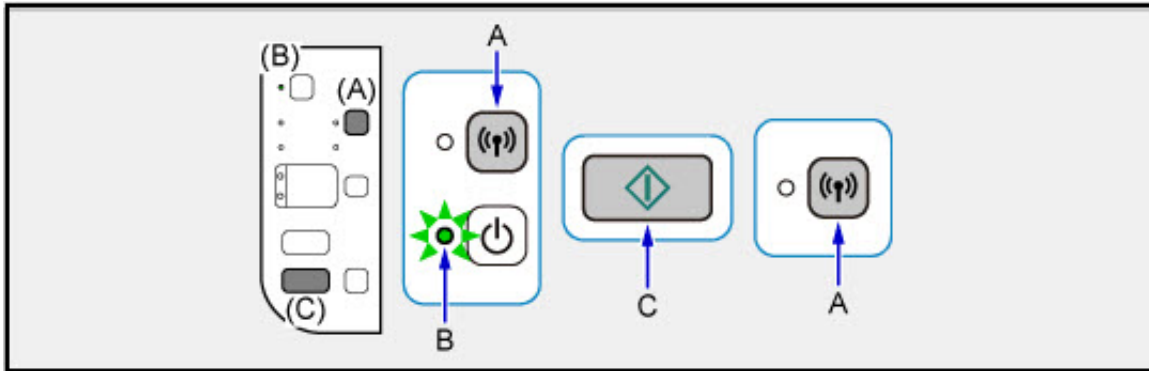
## Check the printer Status

If the printer is performing cleaning, print head alignment, or any other processes, wait for the process to finish, before starting setup.

If the **Wi-Fi** lamp (A) on the printer is flashing, press the **Stop** button (B).



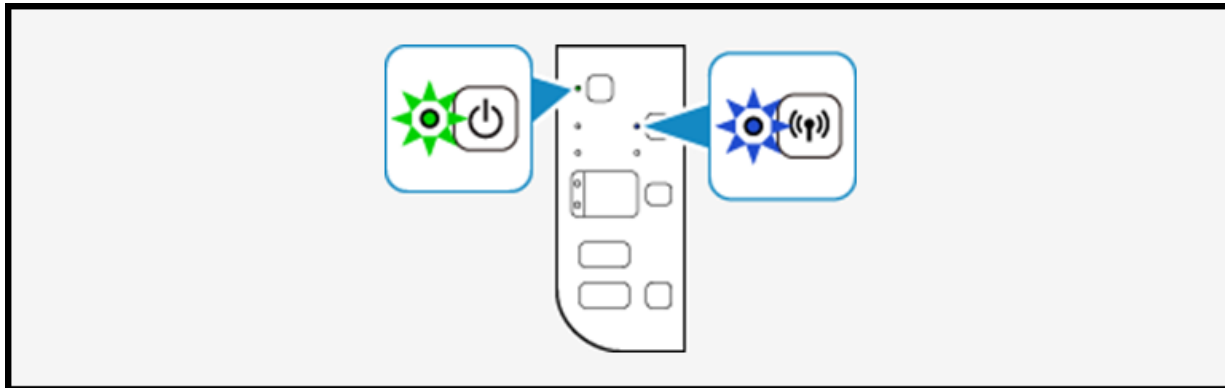
# Connecting to the Wireless LAN



1. Hold down the **Wi-Fi button** (A) on the printer until the **ON lamp** (B) flashes, then release the **Wi-Fi button**.
2. Press the **Color button** (C) then the **Wi-Fi button**.

# Connecting to the Wireless LAN

3. Make sure that the **Wi-Fi** lamp flashes quickly and the **ON** lamp is lit



The printer is now ready to make the connection with the Wireless network and computer and will stay in this ready mode for at least one hour. Continue to the next page to proceed with the remainder of the setup.

# Connecting to the Wireless LAN

To use the machine wirelessly with a computer, the printer must be connected to the Wireless LAN and software including the drivers needs to be copied (installed) to the computer's hard disk. Installation time varies depending on the computer environment or the number of application software to be installed.

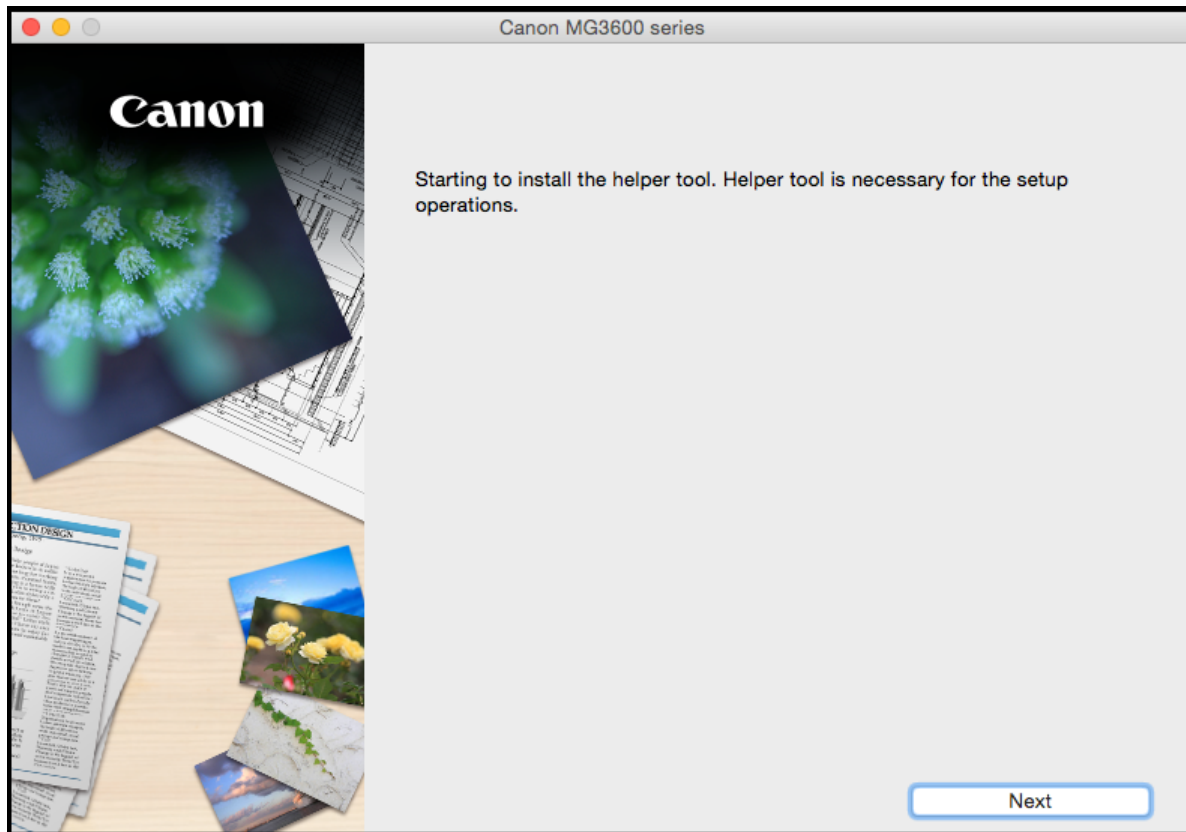
A number of warning messages may appear during installation. Check each message, and then click **Open** or **Always Allow**.

To continue with the setup, go to the [Mac OS Setup page](#), read the information\* then click the **Download** button on that page.

\*Note the instruction that if the setup does not start automatically after download, to execute (double-click) the downloaded .dmg file.

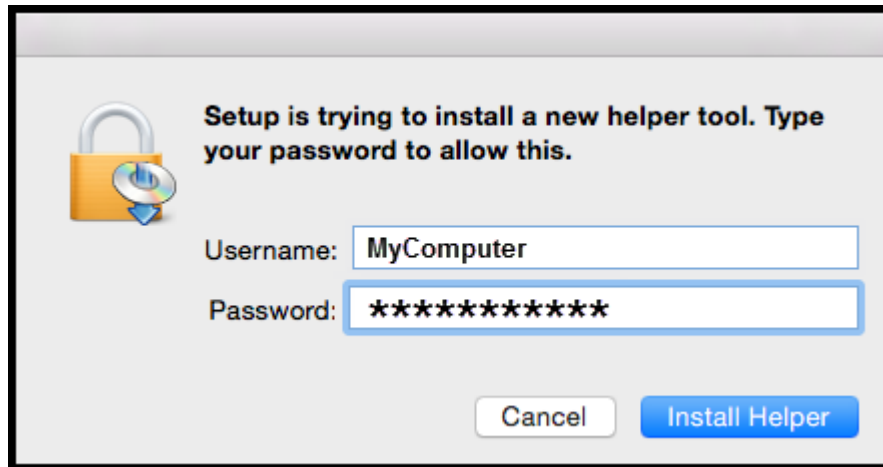
# Connecting to the Wireless LAN

Click **Next** on the Helper tool screen.



# Connecting to the Wireless LAN

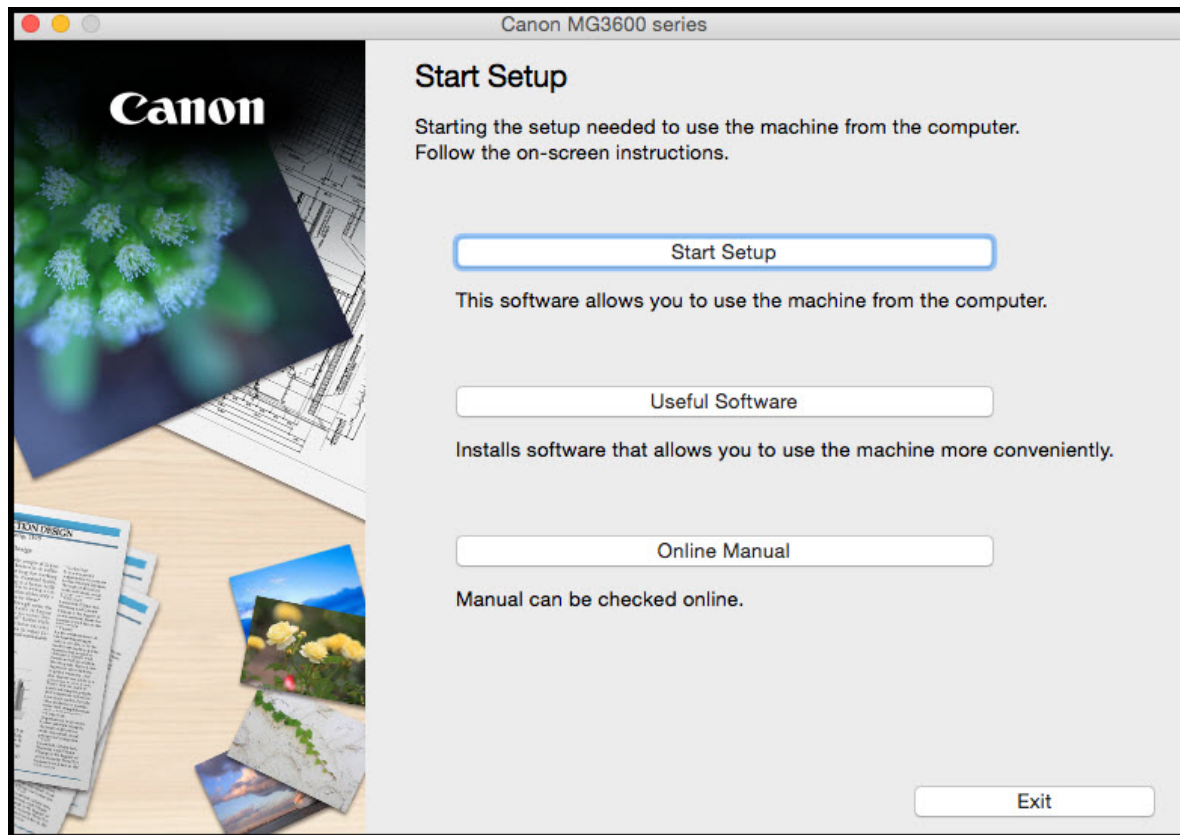
Enter your Password and click **Install Helper**.





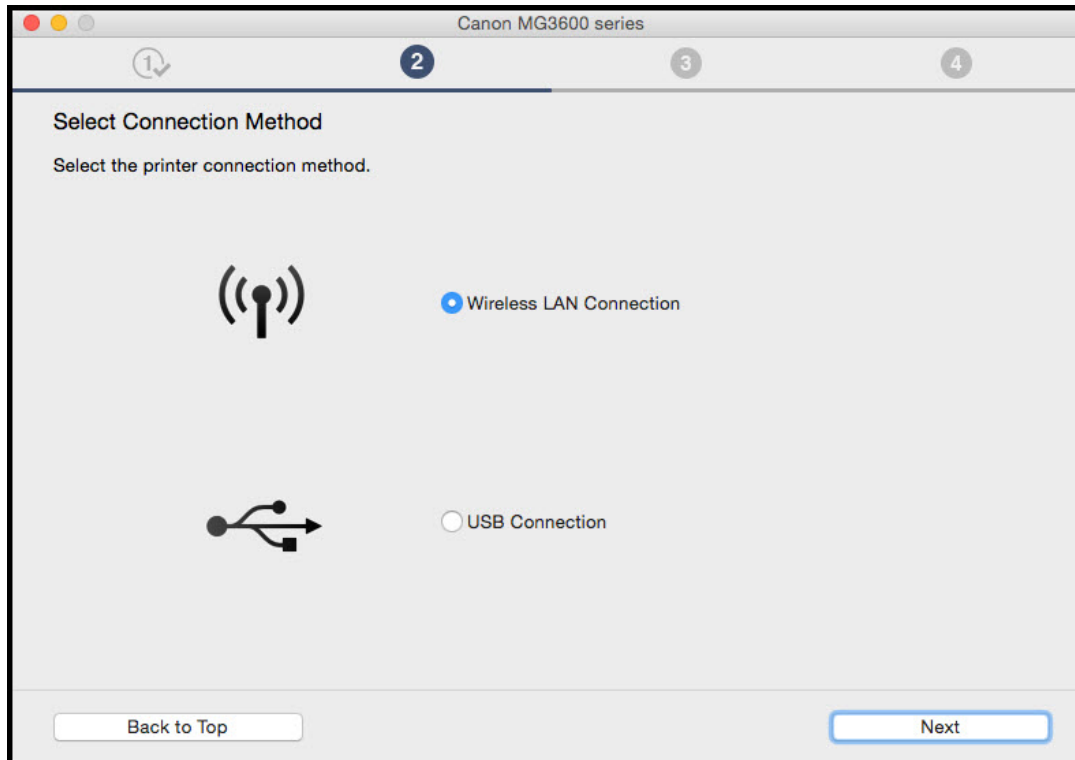
# Connecting to the Wireless LAN

Click **Start Setup** on the **Start Setup** screen.



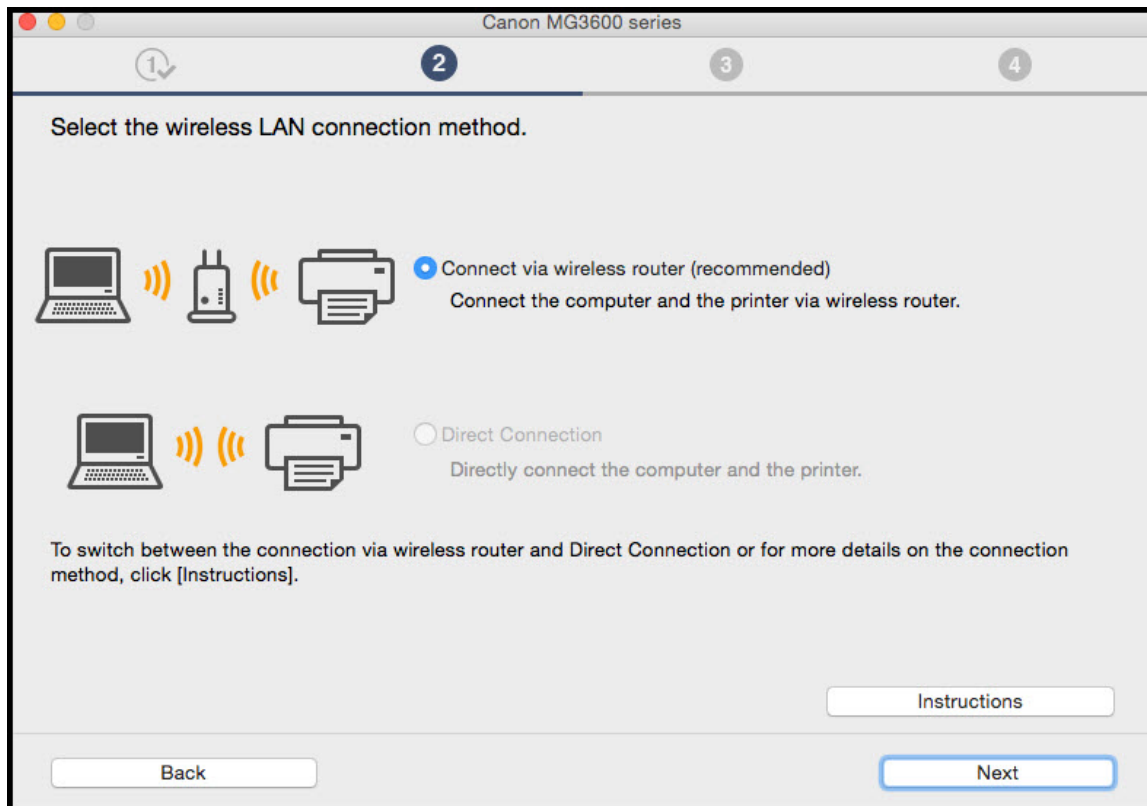
# Connecting to the Wireless LAN

Continue following on-screen instructions until the **Select Connection Method** screen appears. Be sure to select **Wireless LAN Connection**, then click **Next**..



# Connecting to the Wireless LAN

Select **Connect via wireless router (recommended)** then click **Next**.



# Connecting to the Wireless LAN

On the **Printers on Network List** verify your printer is selected by checking the listing in the **Serial Number** column. This will show the last 5 digits of the printer's serial number. The serial number is found on a sticker on the back of the printer near the bottom. Click **Next**.

Canon MG3600 series

1 2 3 4

Printers on Network List

	Serial Number	MAC Address	IP Address
<input checked="" type="checkbox"/>	****00000	11:22:33:44:55:66	-
<input type="checkbox"/>			
<input type="checkbox"/>			
<input type="checkbox"/>			

☐ Setting printer could not be found on the list

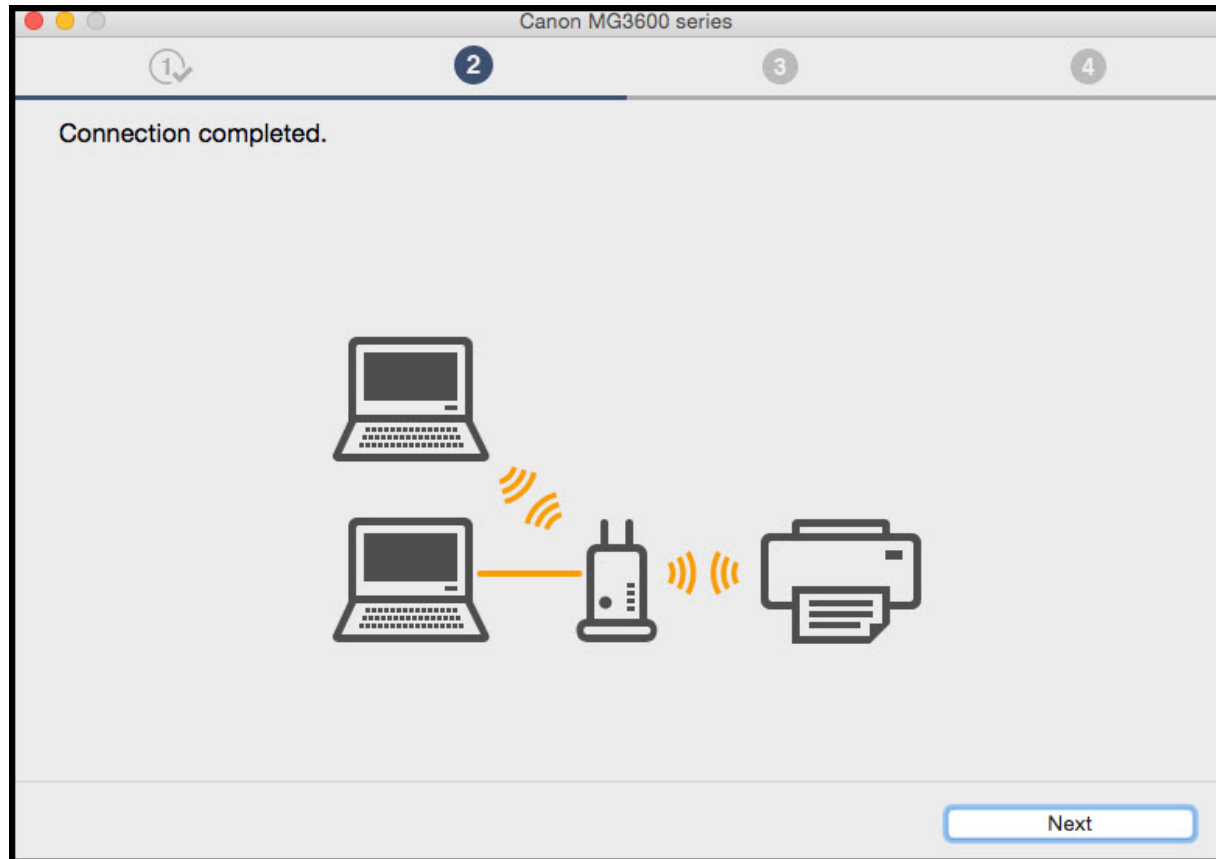
1. To set a printer on the network, select one from the above printers list, and then click [Next].  
The serial number can be found on the back of the printer and on the Letter of Guarantee.  
The above list displays only the last 5 digits of the serial number.

2. If the setting printer could not be found on the above list, turn on the printer and click [Update].

3. If the printer could not still be found, select [Setting printer could not be found on the list], and the click [Next].

# Connecting to the Wireless LAN

Click **Next** on the **Connection Completed** screen.



# Connecting to the Wireless LAN

Select the **MG3600 series** and click **Next** on the **Select the printer to be used** screen.

Canon IJ Network Tool

Select the printer to be used.

Printers:

Model (MAC Address)	Name	Type	Connected to
MG3600 series (11:22:33:44:55:66)	Canon MG3600 series	Canon	LAN

Update

If the printer you want to use is not listed, click Update. If the printer is still not detected, check Check the printer settings, and click Next.

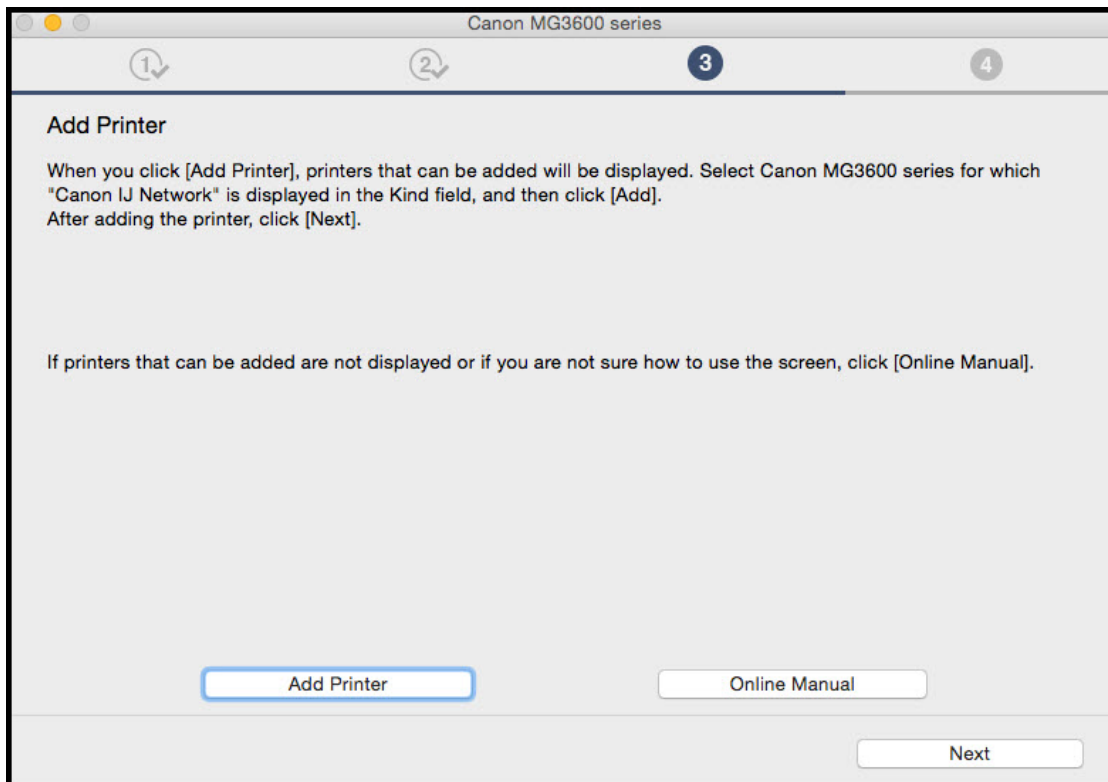
☐ Check the printer settings

Instructions

Cancel Next

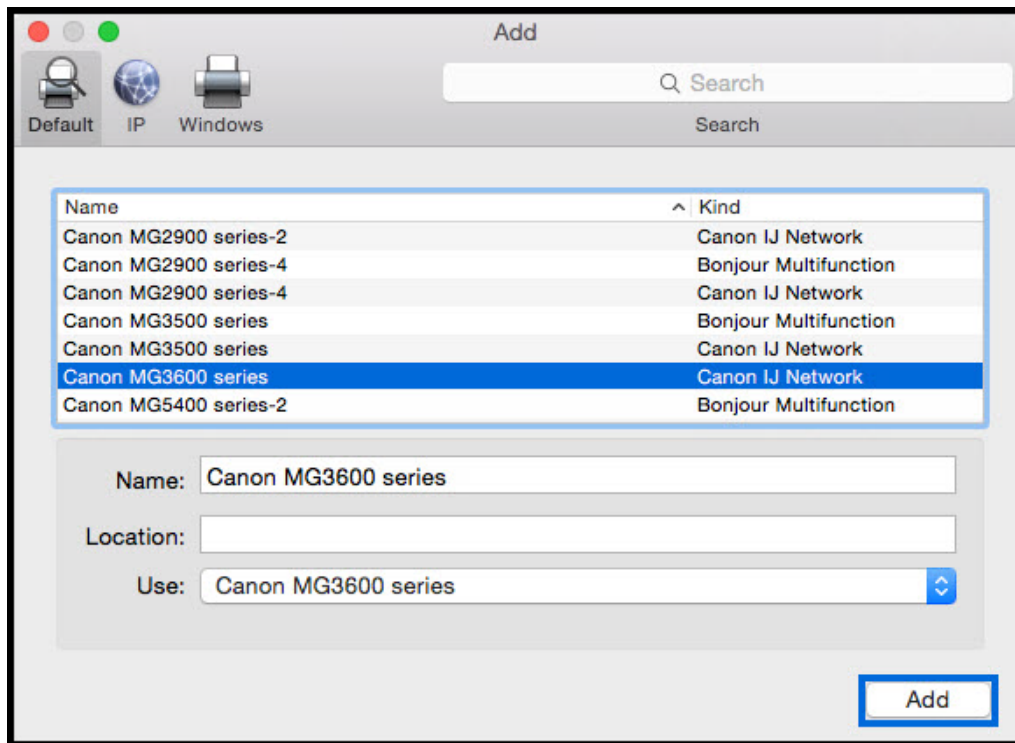
# Connecting to the Wireless LAN

Click **Add Printer** on the **Add Printer** screen.



# Connecting to the Wireless LAN

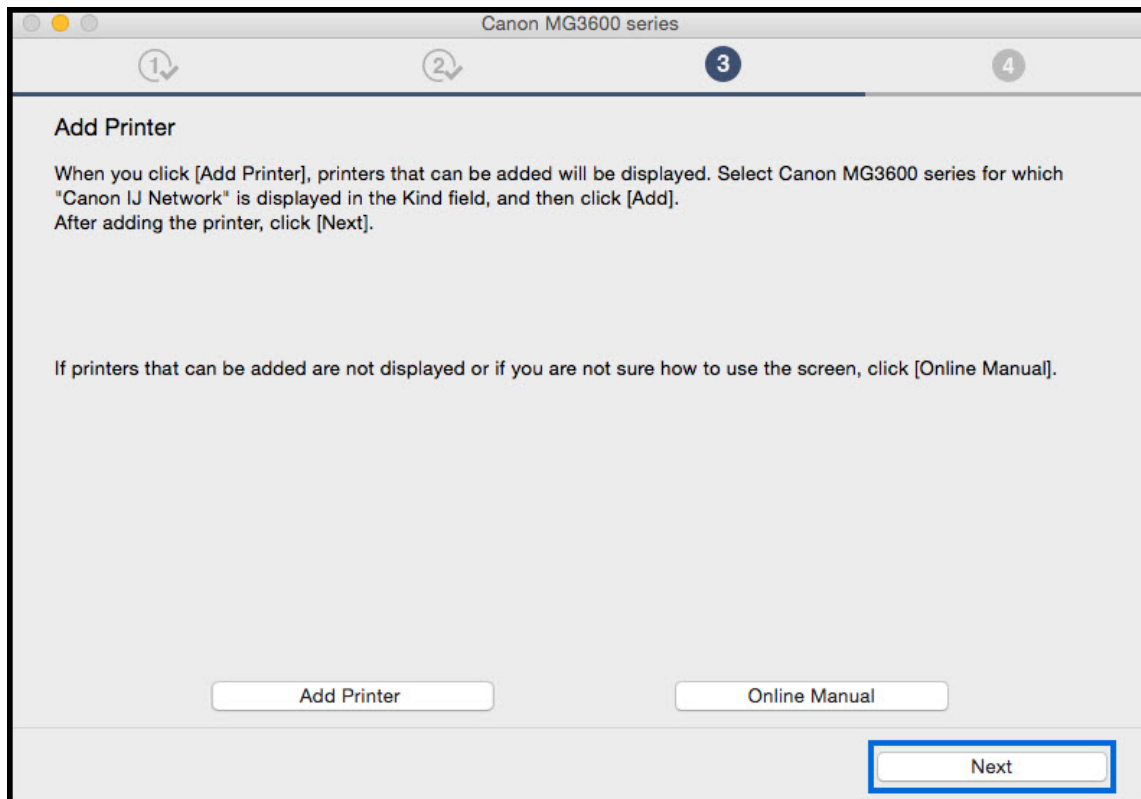
On the **Add** screen, select the **MG3600 series** with **Canon IJ Network** listed in the **Kind** column. Click **Add**.





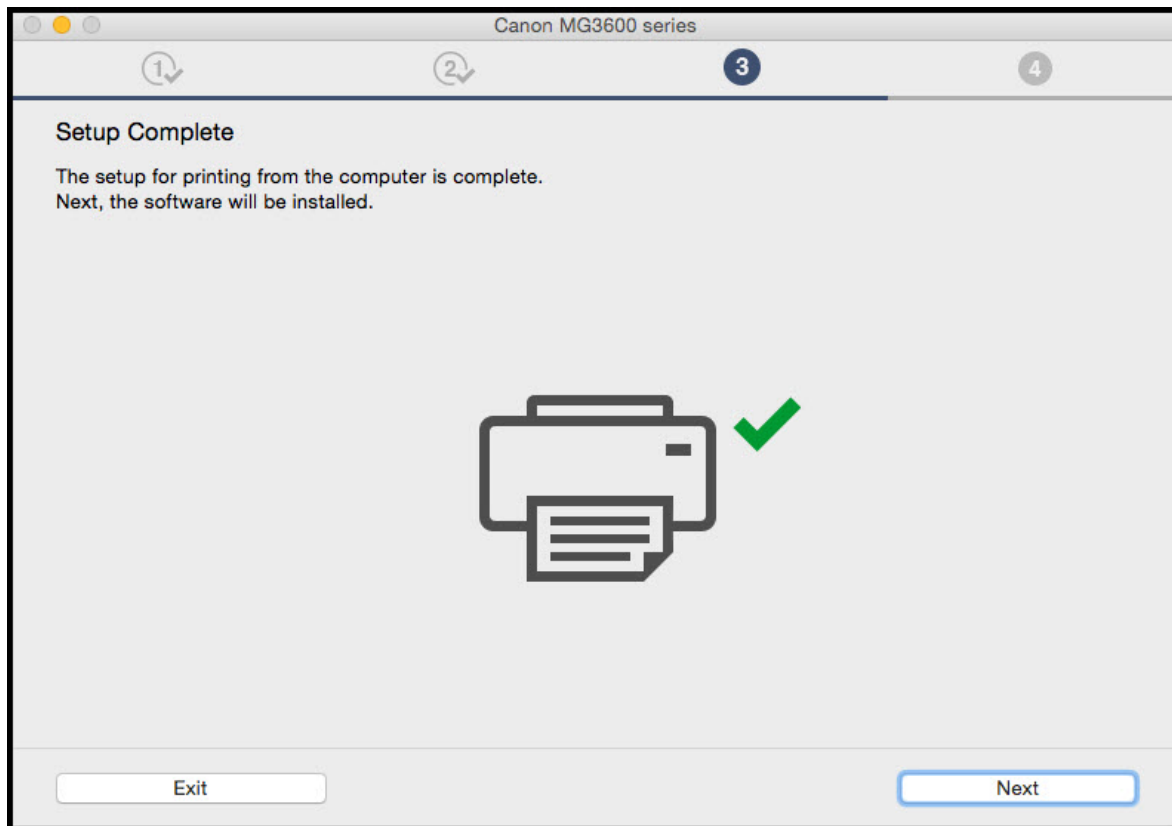
# Connecting to the Wireless LAN

Click **Next** on the **Add Printer** screen.



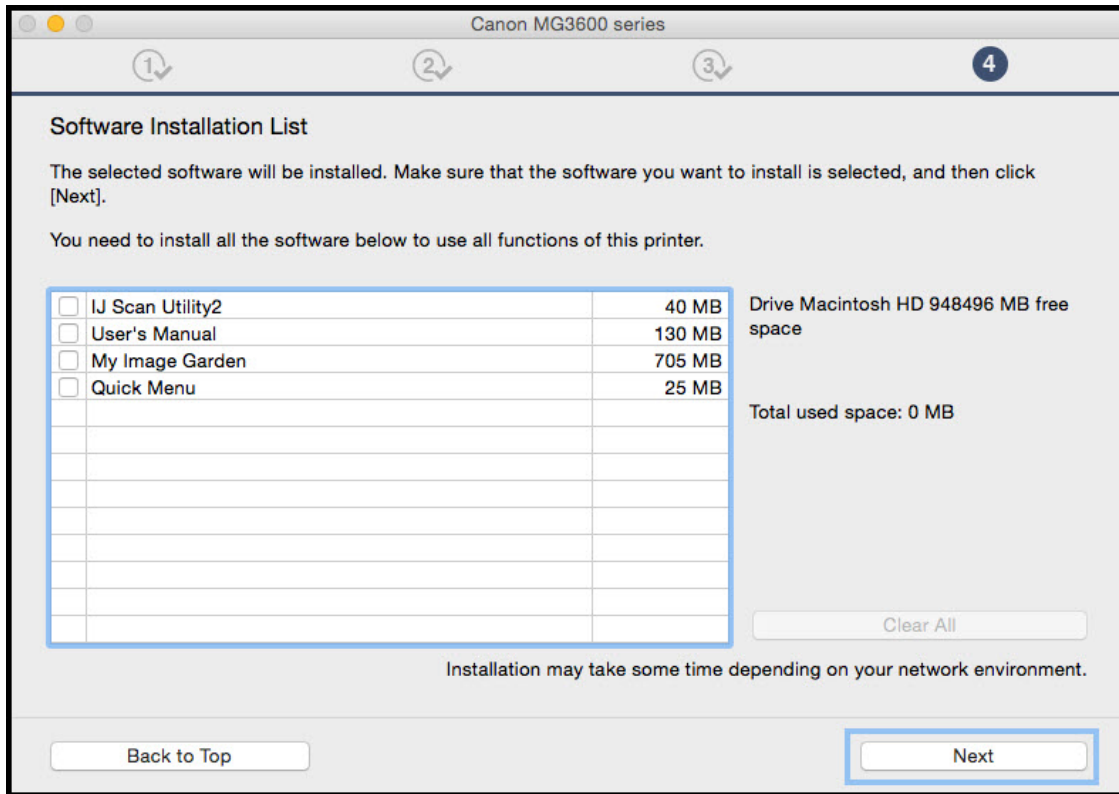
# Installing the Drivers & Software

Continue to follow on-screen instructions. Click **Next** on the **Setup Complete** screen.



## Installing the Drivers & Software

Continue to follow the on-screen instructions. On the **Software Installation List**, select any of the optional software\* to install and click **Next**.



\*Note: It is not necessary to re-install any application if it was installed previously.

# Installing the Drivers & Software

At this point the connection has been established and Drivers and Software has been installed. Please follow any remaining instructions to finish and exit the setup. Click **Exit** when the **Installation completed successfully** screen appears.