



Installing Your Printer to Your Network for the First Time

PIXMA iP8720

Mac OS

Installing Your Printer to Your Network for the First Time

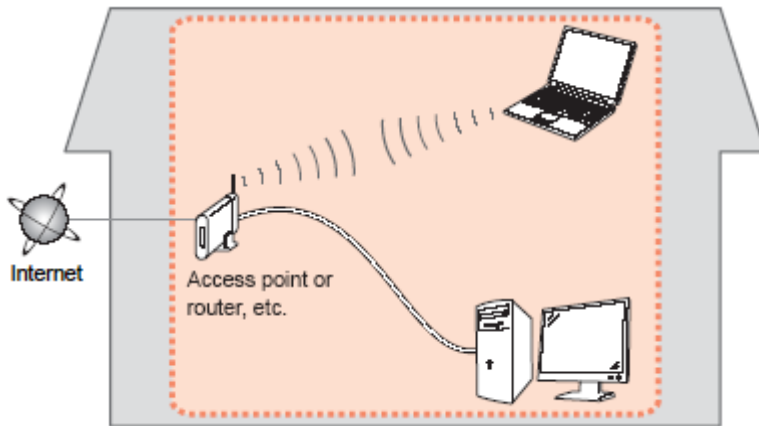
PIXMA iP8720
Mac OS

Preparing to Connect My Printer to the Network	3
Network Requirements	3
Notes on Wireless Connection	4
Installing the Drivers & Software	5

Preparing to Connect the Printer To the Network

Network Requirements

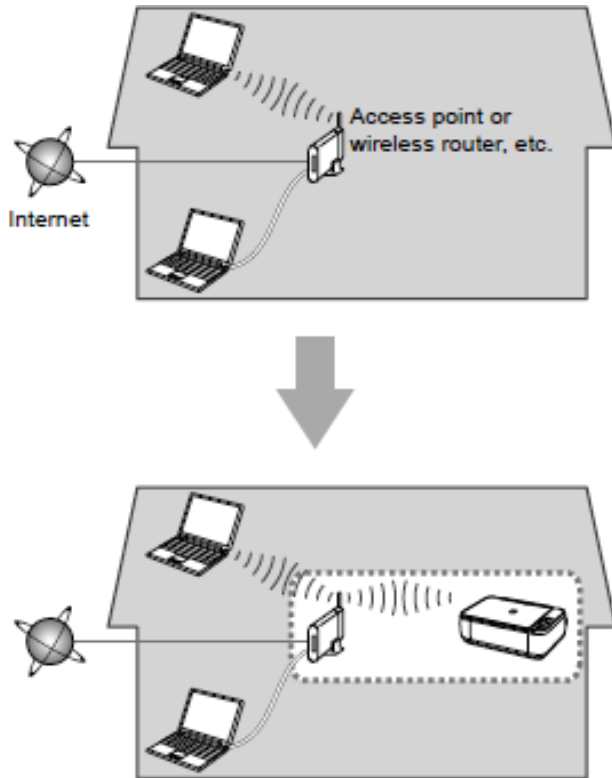
Before connecting the machine to the network, make sure that configuration of the computer and access point or router is complete, and that the computer is connected to the network.



Wireless Connection

Before connecting the machine to the network, the computer needs to be connected to the network. Make sure that configuration of the computer and access point or router is complete.

Preparing to Connect the Printer To the Network



An "Ad-hoc connection," which establishes a direct connection to the computer over a wireless connection without using an access point, is not supported.

Notes on Network Connection

- The configuration, router functions, setup procedures and security settings of the network device vary depending on your system environment. For details, refer to your device's instruction manual or contact its manufacturer.
- In an office setup, consult your network administrator
- If you connect to a network that is not protected with security measures, there is a risk of disclosing data such as your personal information to a third party.
- Place the machine and computer on the same network segment.

Installing the Drivers & Software

Software Installation

To use the machine by connecting it to a computer, software including the drivers needs to be copied (installed) to the computer's hard disk. Installation time varies depending on the computer environment or the number of application software to be installed.

IMPORTANT

- Log on as the administrator (or a member of the Administrators group).
- Quit all running applications before installation.
- Do not switch users during the installation process.
- Internet connection may be required during the installation. Connection fees may apply. Consult the internet service provider.
- It may be necessary to restart your computer during the installation process. Follow the on-screen instructions and do not remove the Setup CD-ROM during restarting. The installation resumes once your computer has restarted.
- If the firewall function of your security software is turned on, a warning message may appear that Canon software is attempting to access the network. If such a warning message appears, set the security software to always allow access.

Installing the Drivers & Software

To set up the PIXMA iP8720 to your wireless network, you must first install the software to your computer.

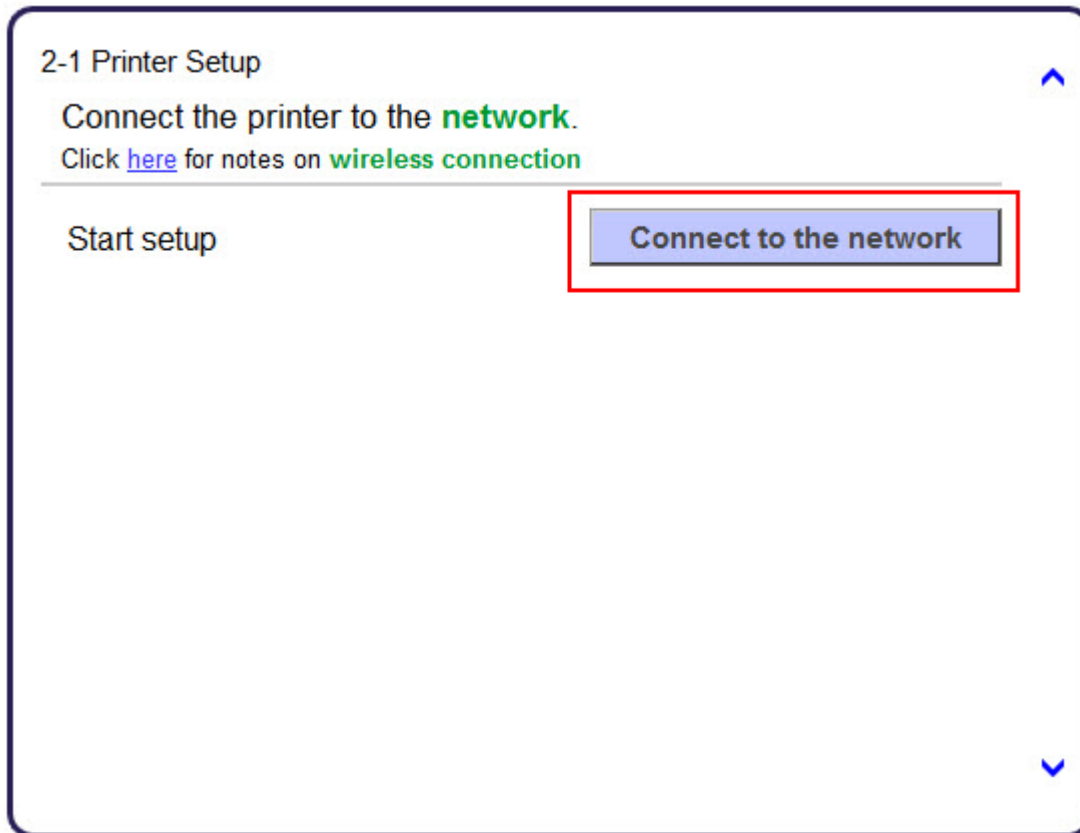
To begin the setup procedure on a Windows computer, perform the following:

- [Go to the IJ Setup site](#)
- Read the Instructions on the **Product Setup** section, then click **Download**
- Double-click the downloaded .dmg file

The setup program will start automatically. The setup instructions presented in this document describe the “**Cableless Setup**” method which does not require the need to know the SSID (network name), or network passphrase and does not require the printer to be temporarily connected to the computer with a USB cable.

Installing the Drivers & Software

After starting the setup, follow on-screen instructions until the **2-1 Printer Setup** screen. Click **Connect to the Network**



Installing the Drivers & Software

Select **Cableless setup** on the **3-1 Setup Procedure Selection** screen.

3-1 Setup Procedure Selection ▲

Check the following and select the most suitable connection method.

Connect to **WPS-compatible Access Point** WPS

Setting the Access Point Information to the Printer Directly from Computer, without Operating the Access Point **Cableless setup**

Cableless setup may take some time. Internet connection may become temporarily unavailable during setup.
Cableless setup is not available on Windows XP. Perform setup with another connection method.

Connect Using Other Methods Other setup

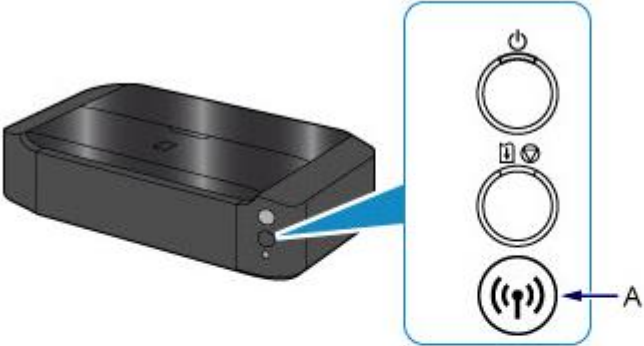
▼

Installing the Drivers & Software

Continue to follow on-screen instructions.

As directed in the **4-1 Connection via Cableless setup** screen, hold down the **Wi-Fi** button on the printer until the **POWER** lamp flashes twice, then release the **Wi-Fi** button

4-1 Connection via Cableless setup




The diagram shows a side view of a black printer. A blue callout box highlights three buttons on the front panel. From top to bottom: a power button (power symbol), a Wi-Fi button (Wi-Fi symbol), and another Wi-Fi button (Wi-Fi symbol) labeled 'A' with an arrow pointing to it.

1. Hold down the **Wi-Fi** button (A) on the printer until the (white) **POWER** lamp flashes 2 times, then release the **Wi-Fi** button after the second flash.

Installing the Drivers & Software

Carefully follow the instructions on the **Connection via Cableless setup** screen. (4-2). Click **Next**

4-2 Connection via Cableless setup



1. Make sure that the (blue) **Wi-Fi** lamp flashes quickly and the (white) **POWER** lamp is lit as shown in the illustration above.

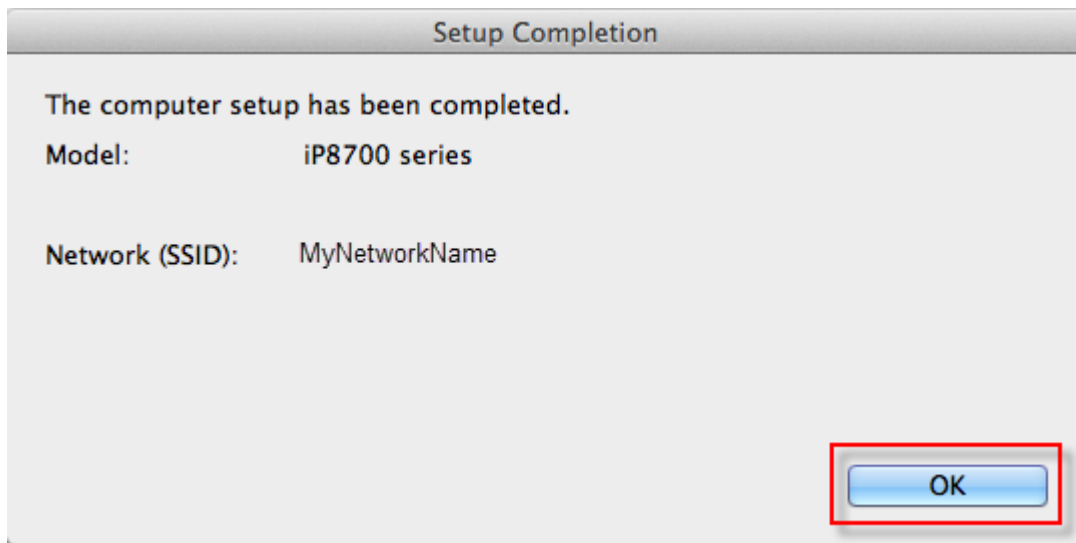
2. Click "Next," then follow the instructions on the next screen to proceed with setup.

[Start Again](#) [Back](#) [Next](#)

Installing the Drivers & Software

Continue following on-screen instructions.

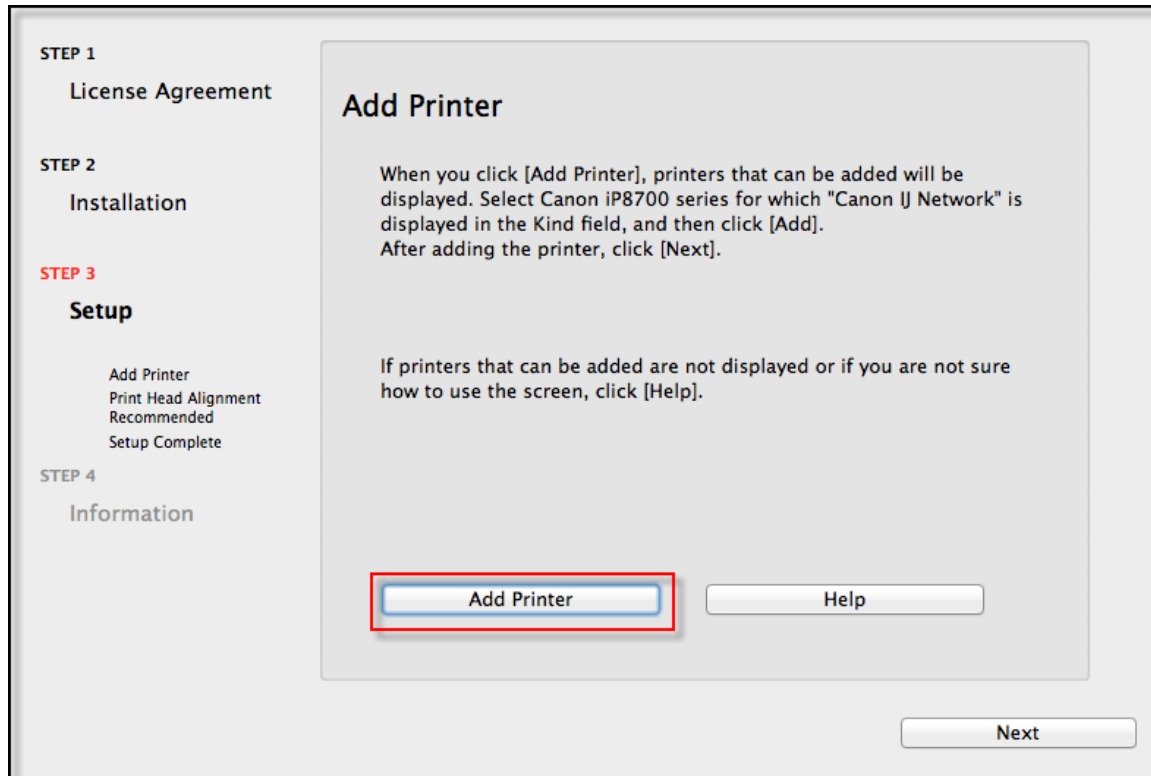
When the **Setup Completion** dialog box appears, click **OK**.



Installing the Drivers & Software

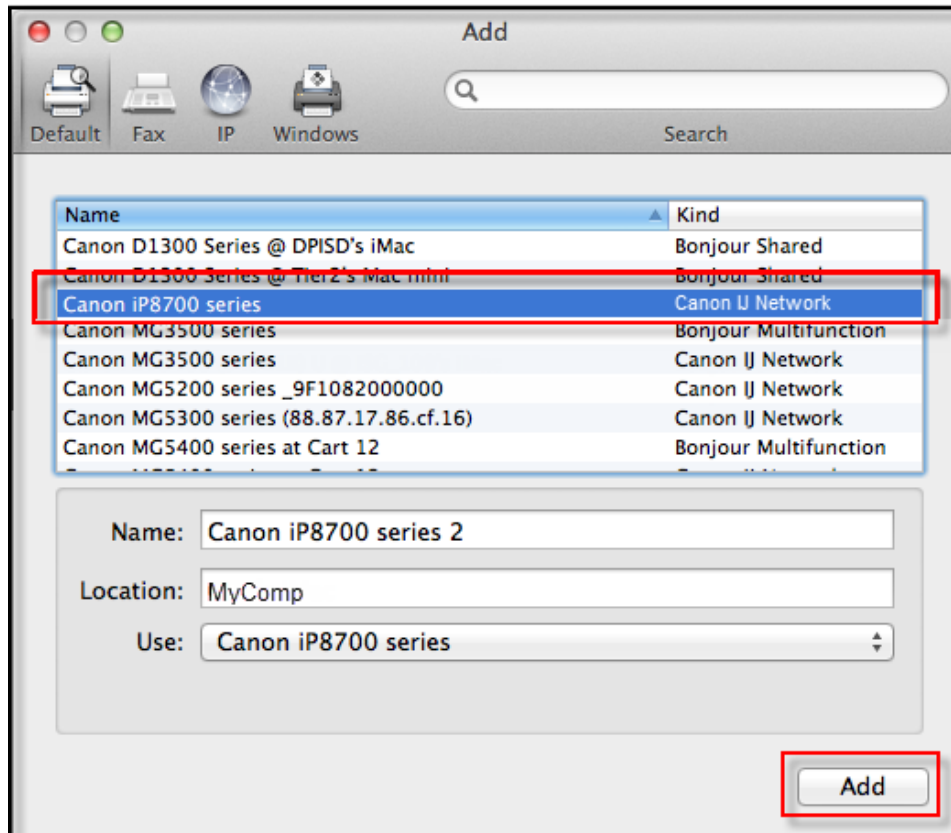
Continue following on-screen instructions.

When the **Add Printer** screen appears, click **Add Printer**.



Installing the Drivers & Software

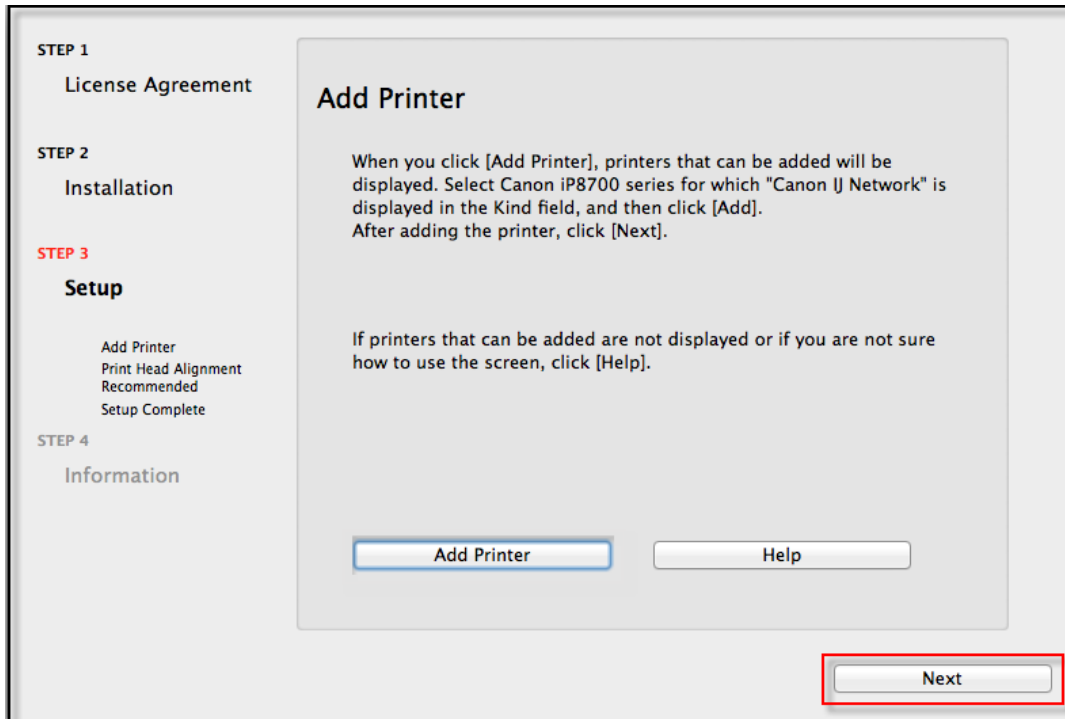
Select **Canon iP8700 series** with **Canon IJ Network** as **Kind**, then click **Add**.



Installing the Drivers & Software

Continue following on-screen instructions.

When the **Add Printer** screen appears, click **Next**.



At this point, setup of the printer and network is complete. Continue to follow any remaining on-screen instructions to finish and exit the setup program