



Installing Your Multifunction to Your Network for the First Time

PIXMA MG4220

Macintosh OS

Installing Your Multifunction to Your Network for the First Time

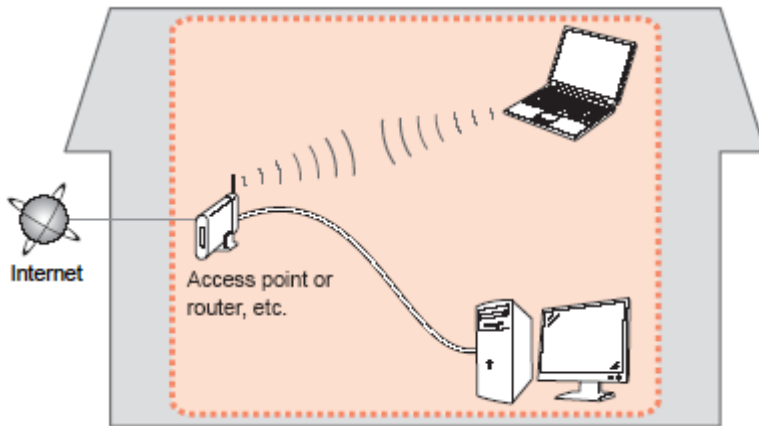
PIXMA MG4220
Macintosh OS

Preparing to Connect the Multifunction to the Network	3
Network Requirements	3
Notes on Wireless Connection	4
Installing the Drivers	5

Preparing to Connect Your Multifunction To the Network

Network Requirements

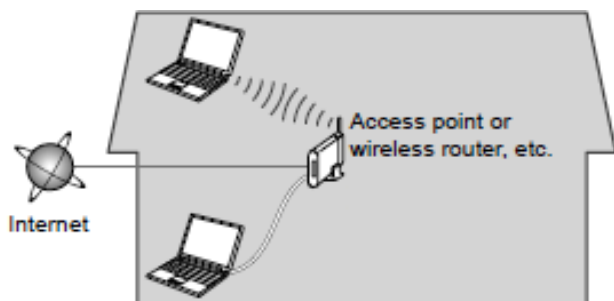
Before connecting the machine to the network, make sure that configuration of the computer and access point or router is complete, and that the computer is connected to the network.



Wireless Connection

Before connecting the machine to the network, the computer needs to be connected to the network. Make sure that configuration of the computer and access point or router is complete.

Preparing to Connect Your Multifunction To Your Network

[<< Previous](#)[Next >>](#)

An "Ad-hoc connection," which establishes a direct connection to the computer over a wireless connection without using an access point, is not supported.

A wireless access point or router is required to use your printer on a wireless LAN.

Notes on Network Connection

- The configuration, router functions, setup procedures and security settings of the network device vary depending on your system environment. For details, refer to your device's instruction manual or contact its manufacturer.
- In an office setup, consult your network administrator
- If you connect to a network that is not protected with security measures, there is a risk of disclosing data such as your personal information to a third party.
- Place the machine and computer on the same network segment.

Installing the Drivers & Software

Software Installation

To use the machine by connecting it to a computer, software including the drivers needs to be copied (installed) to the computer's hard disk. (The installation time varies depending on the computer environment or the number of application software to be installed.)

IMPORTANT

- Log on as the administrator (or a member of the Administrators group).
- Quit all running applications before installation.
- Do not switch users during the installation process.
- Internet connection may be required during the installation. Connection fees may apply. Consult the internet service provider.
- It may be necessary to restart your computer during the installation process. Follow the on-screen instructions and do not remove the Setup CD-ROM during restarting. The installation resumes once your computer has restarted.
- If the firewall function of your security software is turned on, a warning message may appear that Canon software is attempting to access the network. If such a warning message appears, set the security software to always allow access.

Installing the Drivers

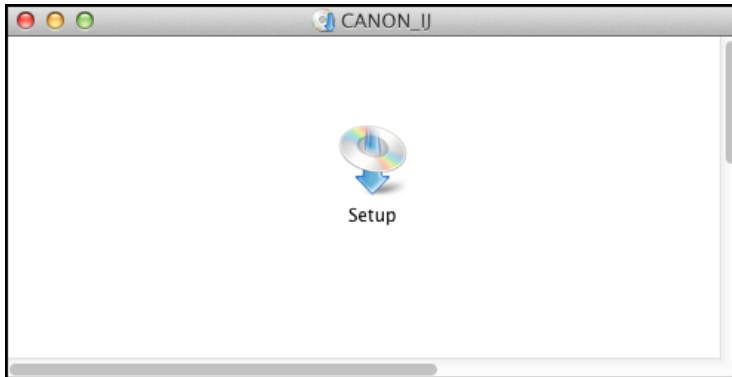
1. *Insert the CD-ROM into the computer.



IMPORTANT

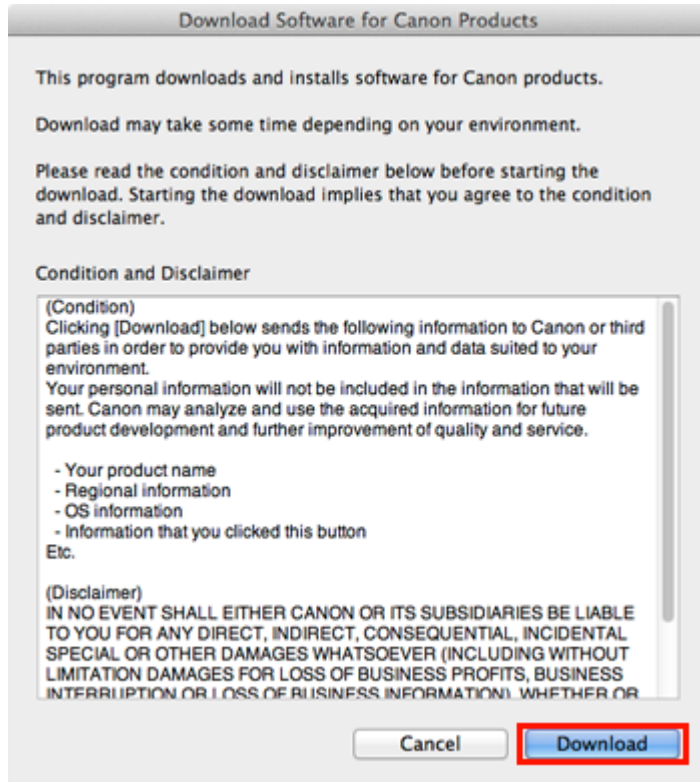
If the USB cable is already connected, unplug it. If a message appears on the computer, click **Cancel**.

2. Double-click the **Setup** icon in the CD-ROM folder, then click **Download** in the subsequent window.



*If you don't have or cannot use the Setup CD-ROM, you can still install the printer using a downloaded file. [Click here for information](#)

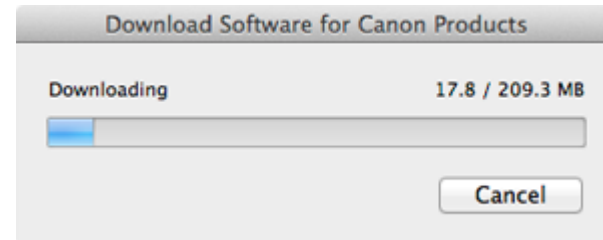
Installing the Drivers



REFERENCE



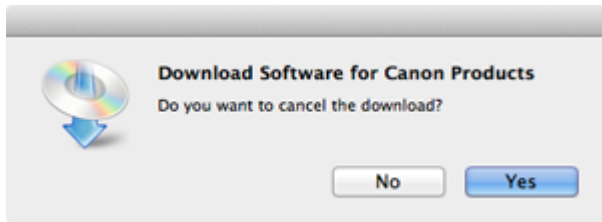
- When the CD-ROM folder does not open automatically, double-click the CD-ROM icon displayed on the desktop.
- The screen below is displayed while downloading.



Installing the Drivers

If you click **Cancel** while downloading, you will see the following screen.

- If you click **No**, you will return to the screen displayed while downloading.
- If you click **Yes**, the download is cancelled. In this case, the files under the download are deleted.



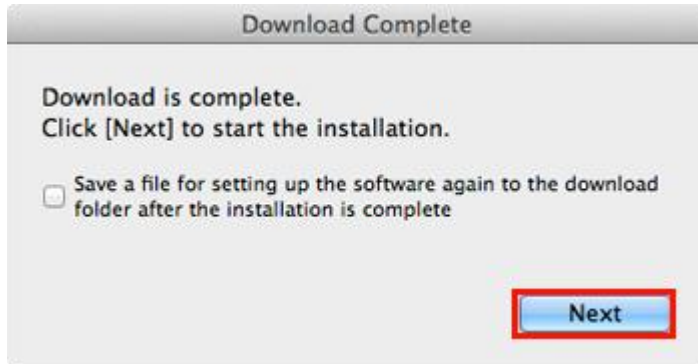
When the download fails, the screen below is displayed.

Click **OK**, and you will go back to the screen for downloading in the procedure .



Installing the Drivers

3. When the download is complete, the screen below is displayed. Click **Next**.



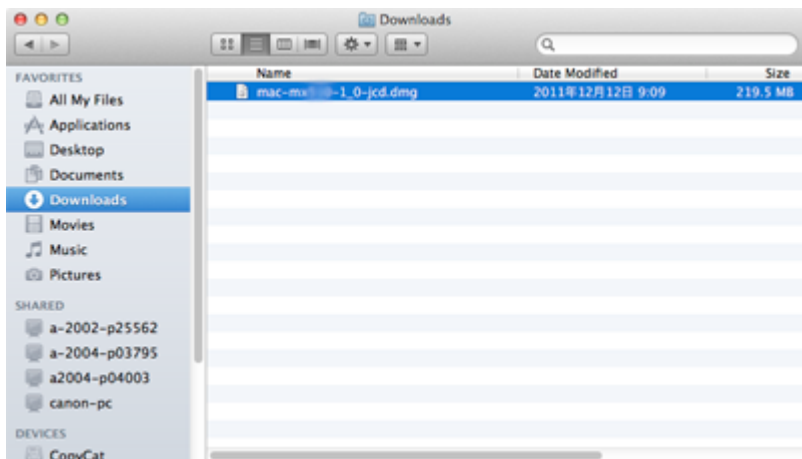
REFERENCE

Select "Save a file for setting up the software again to the download folder after the installation is complete," and the file will be saved to the download folder.



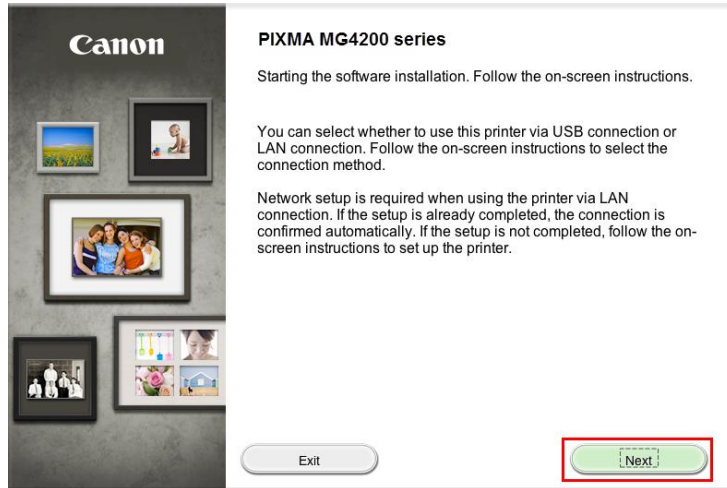
Installing the Drivers

You can perform the setup later using this file.



Connecting to the Wireless Network

4. Click **Next** on the following screen.

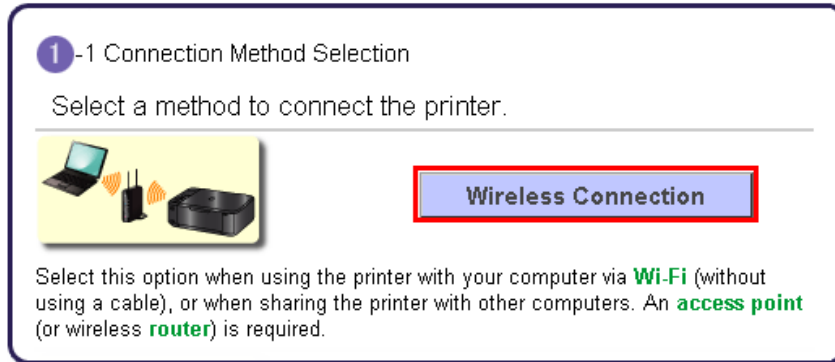


5. In the subsequent screen, enter the administrator name and password. Then click **OK**.



Connecting to the Wireless Network

6. Continue following instructions. Click **Wireless Connection** on **Connection Method Selection**



7. Follow any instructions and click **Connect to the Network** when the **Printer Setup** window appears .



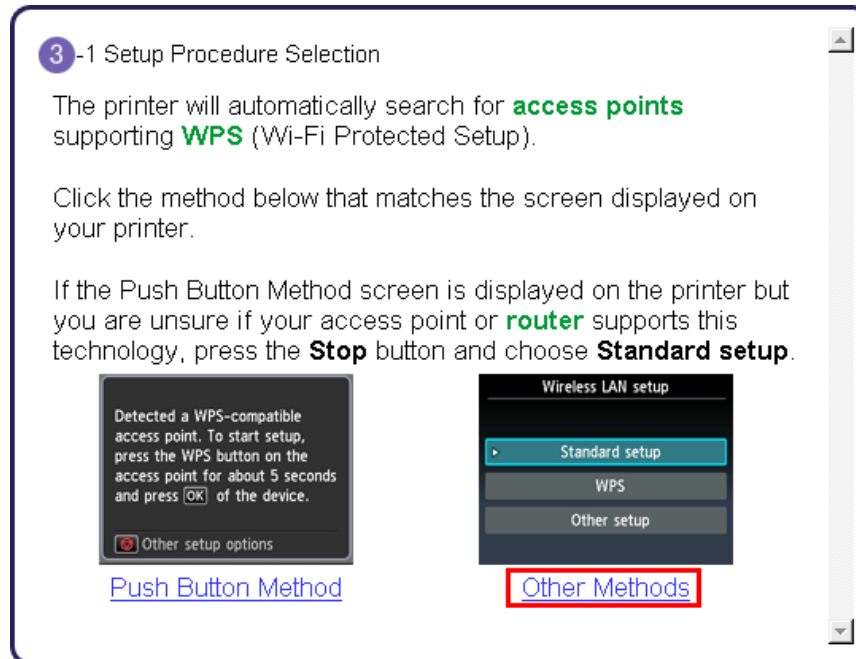
8. Follow any instructions. Pay particular attention to the instruction in the **Setup Procedure Selection (3-1)** if setup detects a WPS access point. Continue to the next page for important information on the Setup Procedure Selection.

Do not proceed past the **Setup Procedure Selection (3-1)** step until reading the information on the next page.

9. The printer automatically searches for access points that support **WPS** (Wi-Fi Protected Setup)*. If a **WPS** access point is detected, the **Push Button Method** screen (shown below on left) will appear on the machine's operation panel

*Unless you are absolutely sure your access point supports WPS and you are familiar with activating this on your access point, **press the Stop button** on the printer's operation panel and click on **Other Methods** on the **Setup Procedure Selection** screen (screenshot shown below)*.

If the **Push Button Method** is not shown on the printer's operation panel (when no WPS access points have been detected), select **Standard setup** on the printers operation panel, then click **Other Methods** on the **Setup Procedure Selection** screen

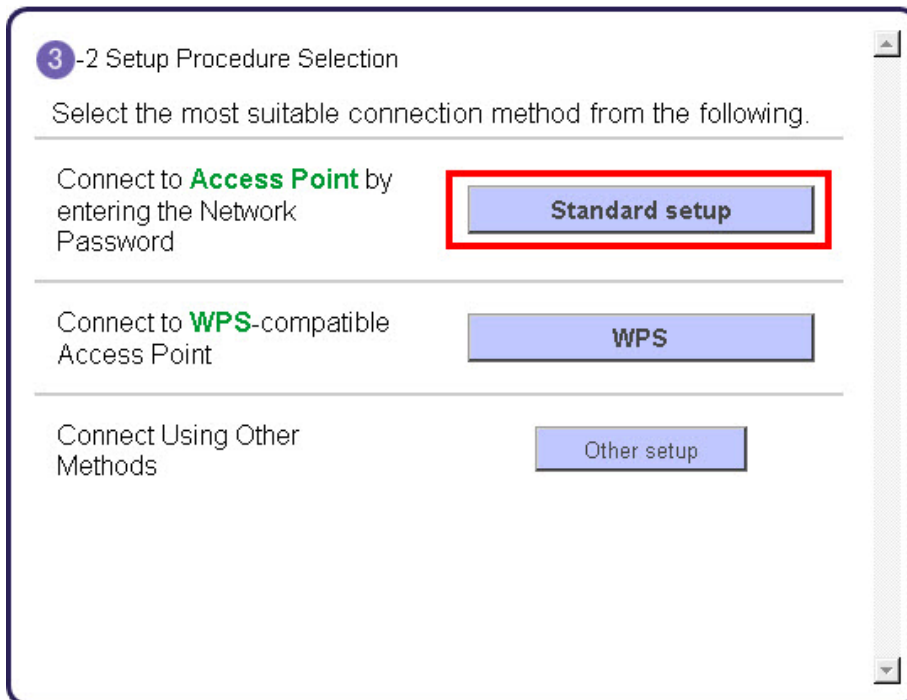


If you selected the **Push Button Method**, continue to follow any instructions until the **Completion of Connection** screen appears. [Click here to skip ahead to the Completion of Connection.](#)

If you selected **Other Methods**, please continue to the next page for important information

For Standard setup only

Select **Standard setup** on the **Setup Procedure Selection** screen (3-2)



3-2 Setup Procedure Selection

Select the most suitable connection method from the following.

Connect to Access Point by entering the Network Password	Standard setup
Connect to WPS -compatible Access Point	WPS
Connect Using Other Methods	Other setup

Continue to next page before proceeding any further with setup

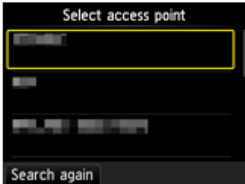
Connecting to the Wireless Network

[<< Previous](#)[Next >>](#)

Follow On-screen instructions. When you get to Step 4-2 and later in Step 4-4 (screens shown below) you will need to know SSID and password information*

Step 4-2

4 -2 Connection via Standard setup



1. Select your **access point**, then press the **OK** button.
If another screen appears, refer to "Troubleshooting" on the right.


If you don't know your access point name

Select the automatically displayed access point name in the printer screen.

Confirm the access point name (automatic display)

Step 4-4

4 -4 Connection via Standard setup



1. Enter the **network password** (WEP key or **passphrase**).
Character entry is case-sensitive so be sure to confirm. Click [here](#) for details on how to enter characters and how to change the character type.

If you don't know the network password for your access point

Enter the automatically displayed network password in the printer screen.

2. Press the left **Function** button.

Confirm the network password (automatic display)

***Unless you are absolutely certain of this information, please continue to the next page for information on locating / verifying this information**

Continue to follow on-screen instructions after verifying the access point and entering the network password.

Connecting to the Wireless Network

[<< Previous](#)[Next >>](#)

If you don't know your Access Point / Router name or SSID*, or the Passphrase or Network key for your wireless network, you can find this information during Standard setup using the Setup CD-ROM or the downloaded files (Mini Master Setup or Master Setup).

*The terms 'SSID' and 'AccessPoint / Router' refer to a name used to identify the specific Access Point or Router. 'Passphrase' and 'Network Key' refer to a password required to prevent unauthorized access to communication.

Look for the **Confirm the access point name (automatic display)** or the **Confirm the network key (automatic display)** buttons during the setup procedure.



Clicking either of these buttons will give the needed information. On a Mac OS X system you may need to click 'Allow' on one or more windows after clicking either of the above buttons. See example below of the Wireless Lan Setup Information window. (appearance varies depending on Operating System). Use the provided information when selecting the Access Point / Router and for entering the Network Key.

Below is information about the access points detected from your computer.

Wireless LAN Setup Information:

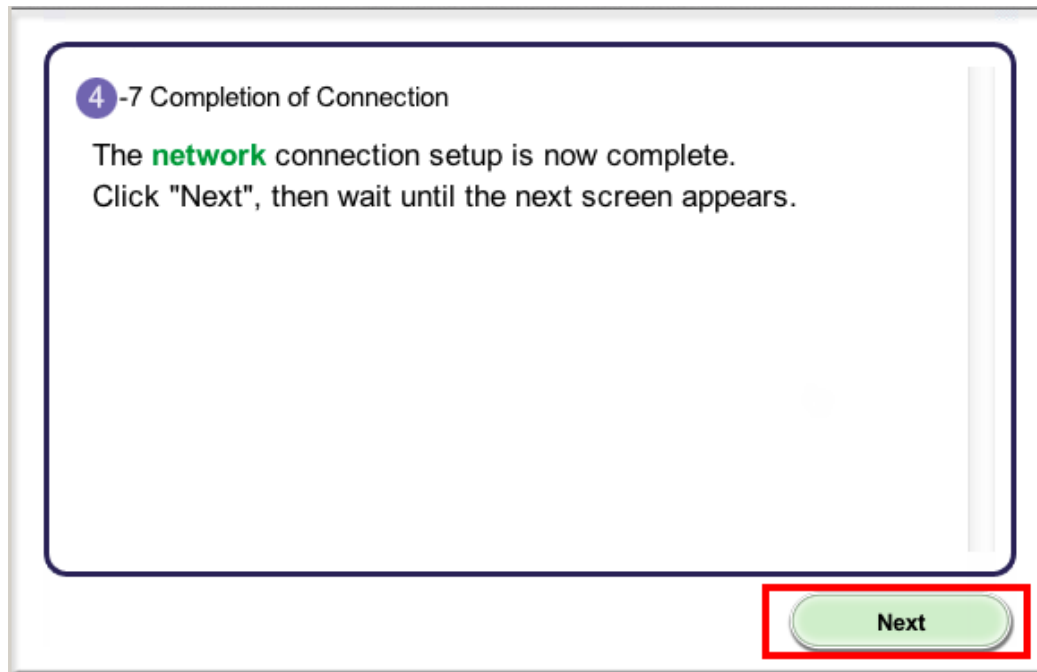
Access Point Na...	Network Key (Encryption Key)
YourNetName	YourPassPhraseorNetKey

OK

[Back to previous steps.](#)

Installing the Drivers

11. Continue to follow any instructions until the **Setup Completion** or **Completion of Connection** screen below is displayed. Network connection setting is complete.



Click **Next**. Software will install. Continue to follow instructions until the **Add Printer** screen (shown on next page) appears.

12. Network setup is complete. Continue to follow any remaining On-screen instructions to install the software. On the Software Installation List screen, select any software to be installed*. **MP Drivers** and **Canon IJ Network Tool** which are pre-selected are required for the printer to be able to be used over the network. **My Image Garden**, **Quick Menu** and **ScanGear** are highly recommended to take full advantage of your printer's features. Click **Next** after selecting the software.

[illegible]

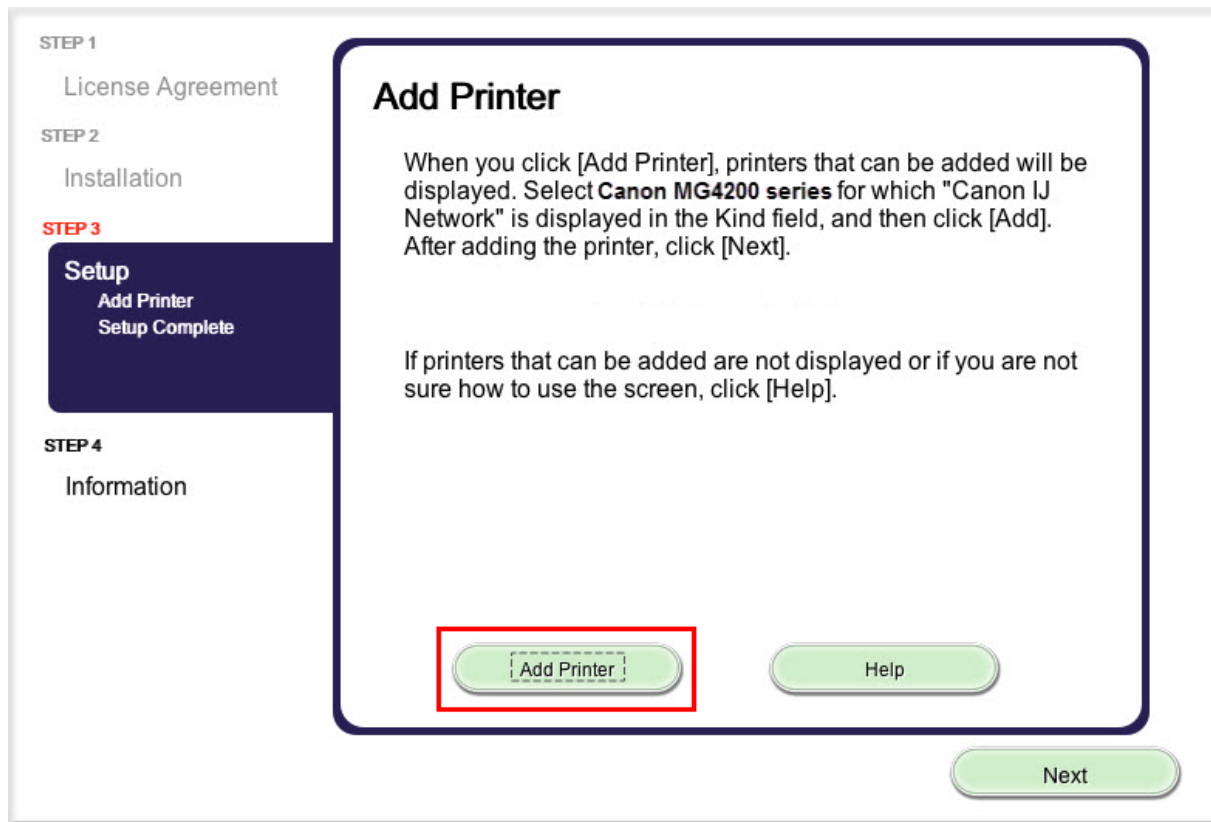
*If you are using the downloaded '**Mini Master setup**' file to install the printer, only the **MP Drivers** and **Canon IJ Network Tool** will be installed.

Additional software can be downloaded separately. The software can be found in the **Software** section of [Drivers & Software](#) (the same page where you downloaded the Mini Master setup file)

Adding the Printer

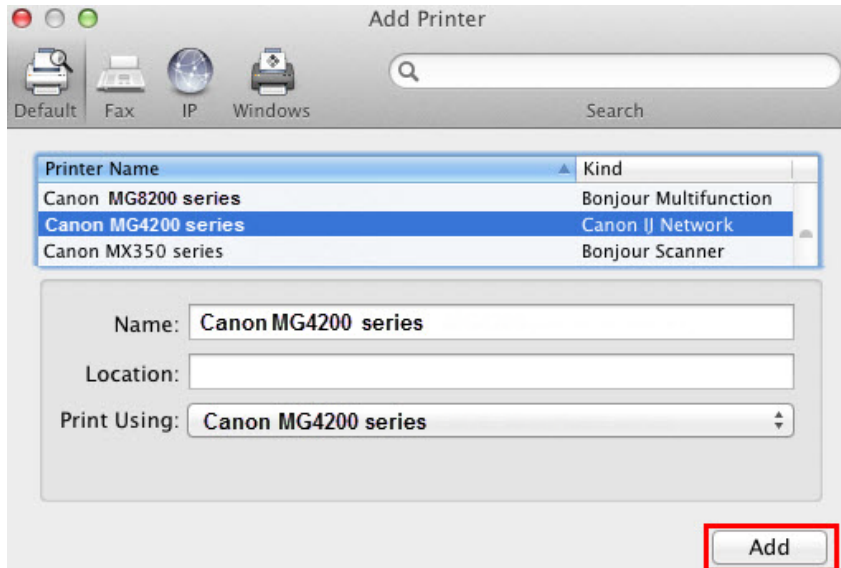
Add the Printer

1. Click **Add Printer** on the Add Printer Screen



Adding the Printer

2. Select **Canon MG4200 series** with **Canon IJ Network** listed in the **Kind** column*. Click **Add**.



REFERENCE

If the machine is not detected, make sure of the following:

- The machine is turned on.
- The firewall function of any security software is turned off.
- The computer is connected to the access point.

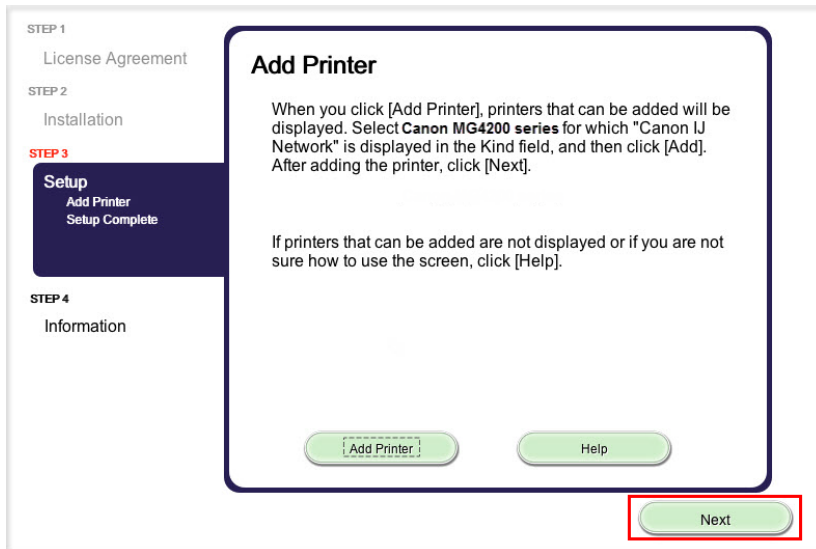
*CAUTION

If you will be installing the Canon printer driver on Mac OS X and using the printer through a network connection, you can select **Bonjour** or **Canon IJ Network** in the **Add Printer** dialog.

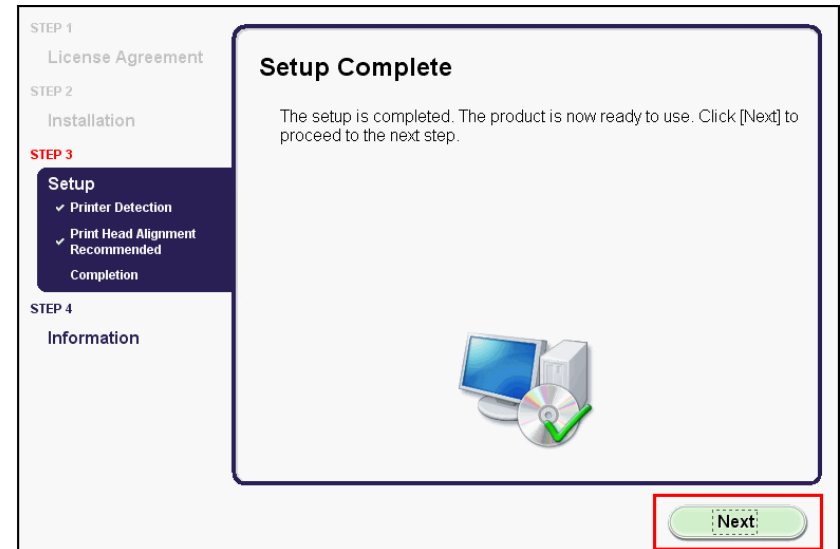
If **Bonjour** is selected, remaining ink level messages may differ from those indicated by **Canon IJ Network**. Canon recommends you to use **Canon IJ Network** for printing.

Adding the Printer

4. Click Next.



5. Click Next.



Setup is complete. Click **Next** to finish the remaining information section.

Installing the Drivers using downloaded files

If you can't find your CD-ROM, you can set up the printer by downloading and installing the **MG4200 series Mini Master Setup**, which includes the same step-by-step installation as the CD-ROM. Follow the instructions below:

1. [Click here to access the MG4220 Drivers & Software page.](#)
2. Select the operating system and version of your computer (see example below).
3. Expand the 'Drivers' section, if necessary, by clicking the red triangle.
4. Click the file name, then click 'I Agree – Begin Download' and save the file to your computer.

Drivers & Software

Select an Operating System and OS Version from the drop down menu below then click on a driver to view the latest supported files for your product. Click on the file description to navigate to download. Click on "I Agree - Begin Download" to start downloading.

Mac OS

OS X v10.8 Mountain Lion

[How to find your OS](#)

Select Language: ☒ English ☐ Spanish ☐ All

Show All

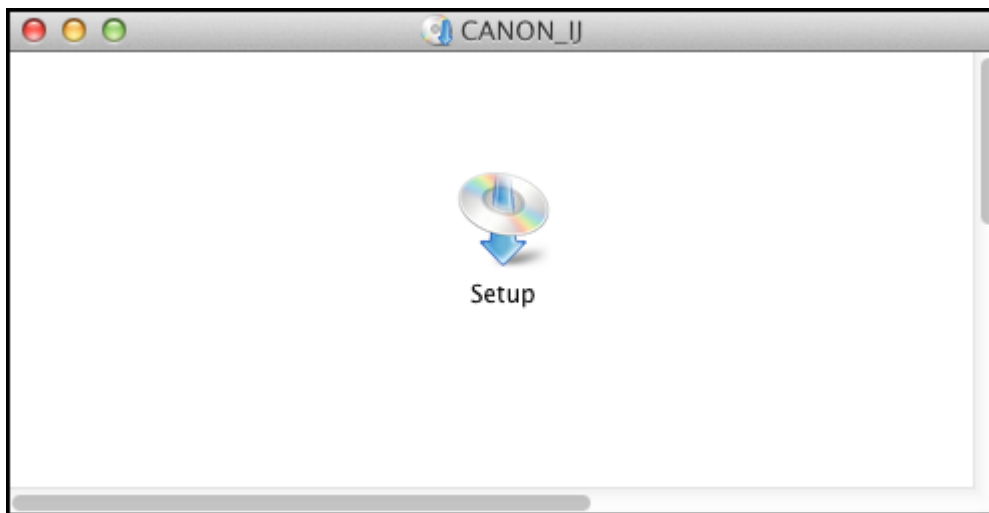
▼ Drivers

Sort by Most Recent Post Date

File Description	Date
<input checked="" type="checkbox"/> MG4200 series Mini Master Setup (OS X 10.5/10.6/10.7/10.8)	09/28/12
<input type="checkbox"/> ICA Driver Ver. 2.1.1m (OS X 10.6/10.7/10.8)	09/14/12
<input type="checkbox"/> MG4200 series CUPS Printer Driver Ver. 10.67.1....	07/11/12
<input type="checkbox"/> MG4200 series Scanner Driver Ver. 19.0.0a (OS X...	07/11/12

Installing the Drivers using downloaded files

5. Once the download is complete, double-click the file from its download location to begin the installation.
6. Click the **Setup** icon



7. Follow the same instructions as installing from the CD-ROM [beginning with Step 4](#).