

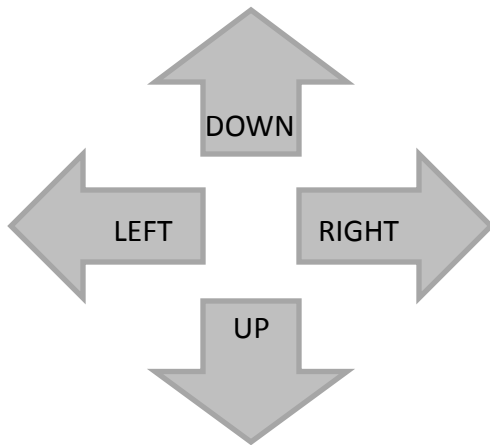


Installing Your Multifunction to Your Network for the First Time

PIXMA MX860

Mac OS

Navigation Tips for Macintosh Users



To navigate this guide, please use the arrows on the MAC keyboard or use the PAGE UP and Page DOWN keys.



Installing Your Multifunction to Your Network for the First Time

PIXMA MP860

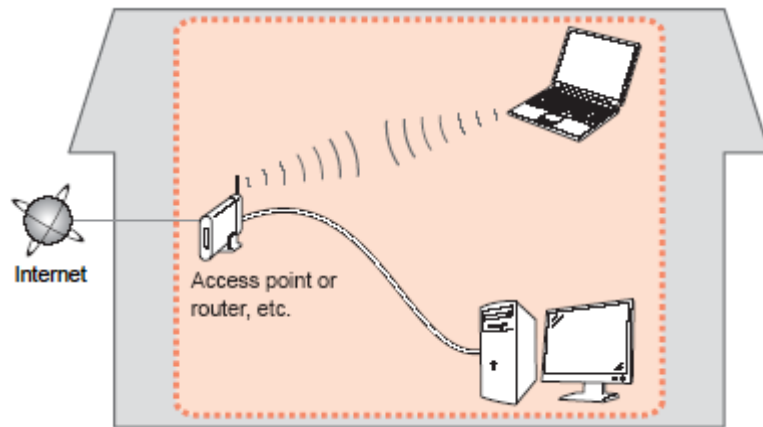
Mac OS

Preparing to Connect My Multifunction to My Network	4
Network Requirements	4
Important Information You Need Before Adding Your Multifunction	5
Preparing Your Multifunction	6
Downloading & Installing the Drivers	9
Downloading the Driver	9
Installing the Driver	12
Adding the Machine	21

Preparing to Connect My Multifunction To My Network

Network Requirements

Before connecting the machine to the network, make sure that configuration of the computer and access point or router is complete, and that the computer is connected to the network.



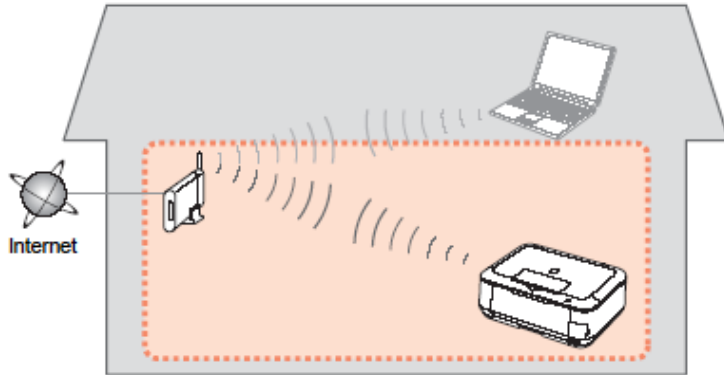
Notes on Network Connection

- The configuration, router functions, setup procedures and security settings of the network device vary depending on your system environment. For details, refer to your device's instruction manual or contact its manufacturer.
- The machine cannot be used over a wireless and wired connection at the same time.

Wireless Connection

Connect to your network environment over a wireless connection.

Preparing to Connect My Multifunction To My Network



An "Ad-hoc connection," which establishes a direct connection to the computer over a wireless connection without using an access point, is not supported.

Be sure to prepare an access point.

Important Information You Need Before Adding Your Multifunction

The following information is required to connect to your access point or router.

- **Access Point Name/Network Name:**

Also referred to as **SSID**. A name to identify the specific access point.

- **Network Key:**

Also referred to as encryption key, WEP key or WPA/WPA2 passphrase, Pre-Shared key.

A password required to set to prevent unauthorized access to communication.

Check your access point or router for the following information, and then write it down.

NOTE: For details on how to check the following information, refer to the manual of your access point or router, or contact its manufacturer.

Preparing Your Multifunction

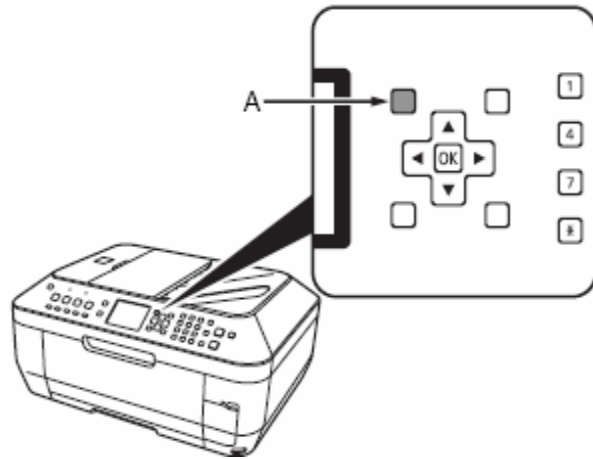
Preparing Your Multifunction

Note : The procedures below are for Wireless LAN setups **not** using the WPS (Wi-Fi Protected Setup) or WCN (Windows Connect Now) setup methods

At this point the USB cable should not be connected between the computer and printer.

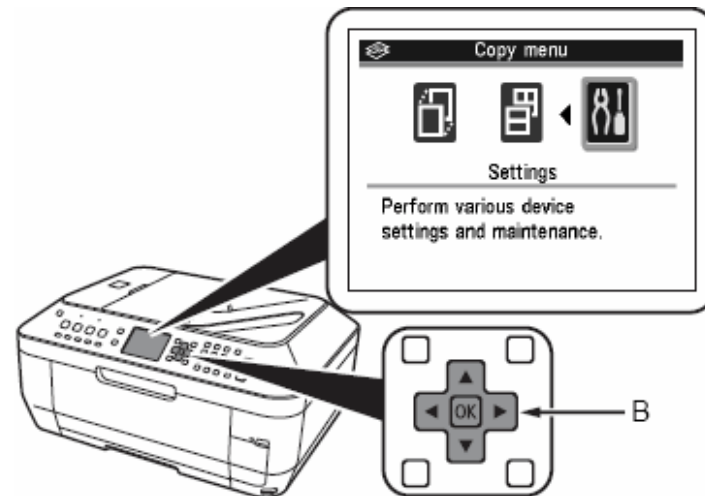
Step One

Press the Menu button (A).



Step Two

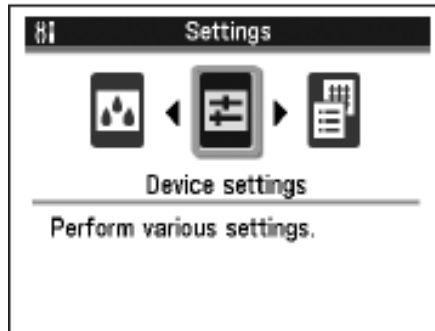
Use the ◀ or ▶ button to select **Settings**, then press the **OK** button.



Preparing Your Multifunction

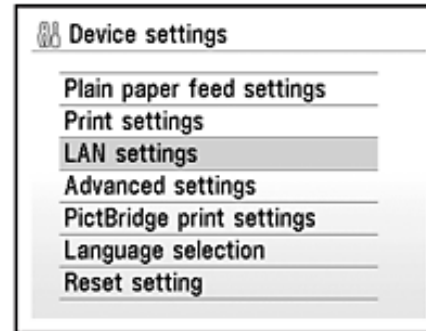
Step Three

Select **Device settings**, then press the **OK** button.



Step Four

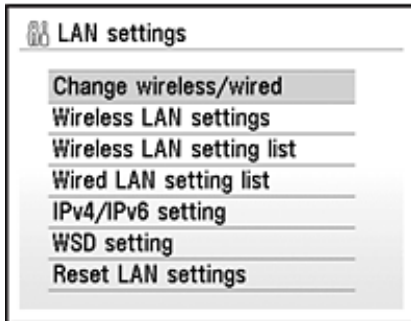
Select **LAN settings**, then press the **OK** button.



Preparing Your Multifunction

Step Five

Select **Change wireless / wired**, then press the **OK** button.



Step Six

Select **Wireless LAN active**, then press the **OK** button.

Step Seven

Press the **On** button to turn off the printer. Connect the USB cable to the printer and computer

Downloading the Driver

To use the machine by connecting it to a computer, software including the drivers needs to be copied (installed) to the computer's hard disk. The installation process takes about 20 minutes. (The installation time varies depending on the computer environment or the number of applications to be installed.)

Step One

[Go to the Drivers & Software for your model](#)

Step Two

Select your operating system in the **Select OS** dropdown menu.

Drivers & Software

Choose an operating system from the drop down menu then select the appropriate driver or software list below

Choose Operating System:

Select Language: All



Hide All

▼ Drivers

- Select OS
- Mac OS X v10.6
- Mac OS X v10.5
- Mac OS X v10.4
- Mac OS X v10.3
- Mac OS X v10.2
- ..
- ...

Step Three

In the Drivers section, click the Download icon for the **MP Driver for Network**

▼ Drivers			
File Description	Post Date	Size	Download
⊕ MX860 series Scanner Driver Ver. 14.11.3a (Ma... File Name: msd_-mac-mx860-14_11_3a-ea8_2.dmg	10/15/10	22.11MB	
⊖ MX860 series MP Driver Ver.1.0 for Network (M... File Name: mx860sosxns10ea7-3.dmg	10/30/09	36.81MB	

This product is a driver for Canon IJ multifunction printers. Install these MP drivers if you have already had a LAN connection.

Downloading and Installing the Drivers

Step Four

On the next screen, read the information and instructions and click **I Agree - Begin Download**
Once the file has been downloaded, double-click it to begin the installation process

IMPORTANT:

- Quit all running applications before installation.
- Log on as the administrator (or a member of the Administrators group).
- Do not switch users during the installation process.
- Internet connection may be required during the installation. Connection fees apply.
- It may be necessary to restart your computer during the installation process. Follow the on-screen instructions. The installation resumes once your computer has restarted.

If the firewall function of your security software is turned on, a warning message may appear that Canon software is attempting to access the network. If such a warning message appears, set the security software to always allow access.

Once the file has been downloaded, double-click it to begin the installation process

Downloading and Installing the Drivers

Installing the Driver

Step One

- A. Connect one end of the USB cable to the computer and the other to the machine.
- B. Make sure the machine is turned on.

Step Two

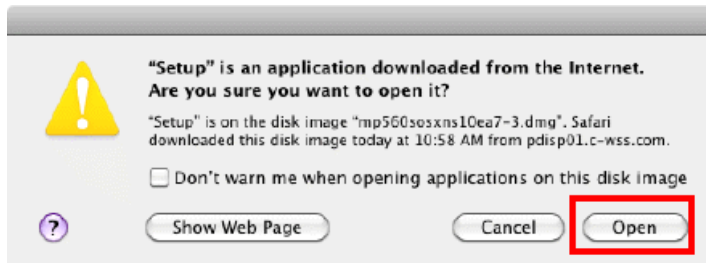
Double-click the **Setup** icon.



Downloading and Installing the Drivers

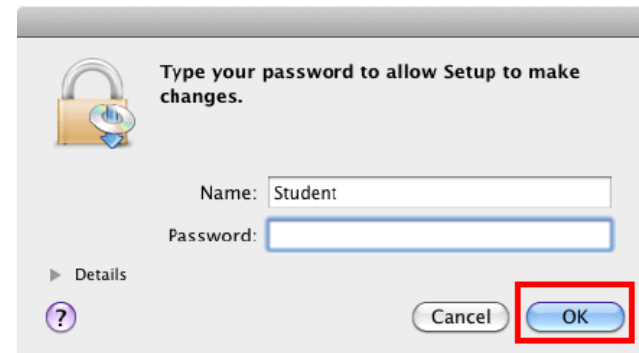
Step Three

If the following message appears, click **Open**.



Step Four

Enter your administrator name and password. Click **OK**.



If you do not know your administrator name or password, click Help then follow the on-screen instructions.



Downloading and Installing the Drivers

Step Five

Select the place of residence. Click **Next**.



Step Six

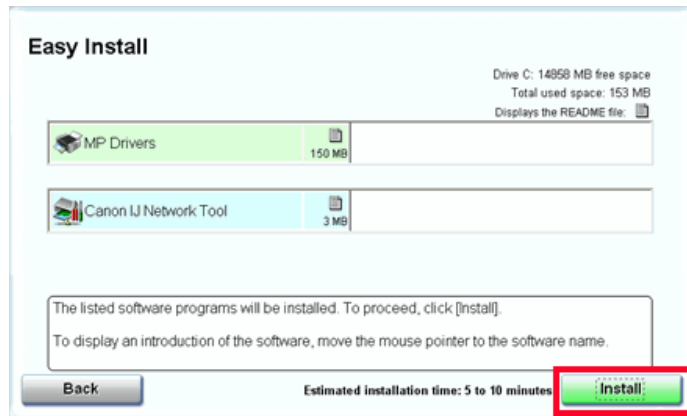
Click **Easy Install**.



Downloading and Installing the Drivers

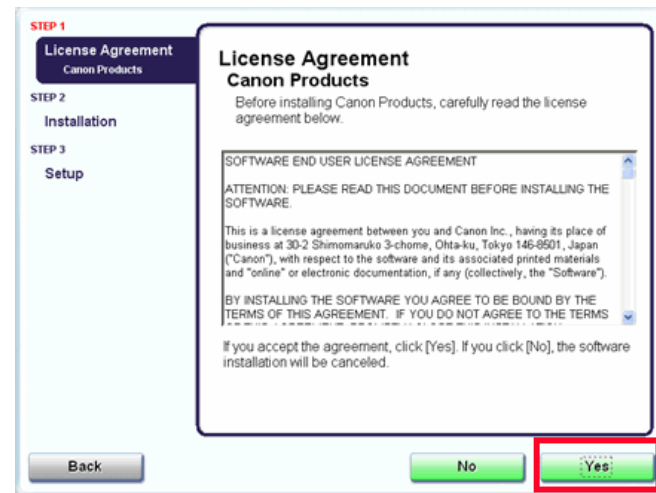
Step Seven

Click **Install**.



Step Eight

Read the License Agreement screen carefully and click **Yes**.



Installation starts.

Downloading and Installing the Drivers

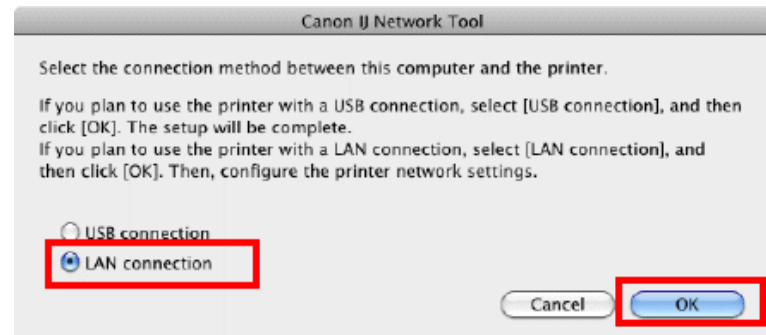
Step Nine

Click **Restart**



Step Ten

After the computer restarts, select **LAN connection** and click **OK**.

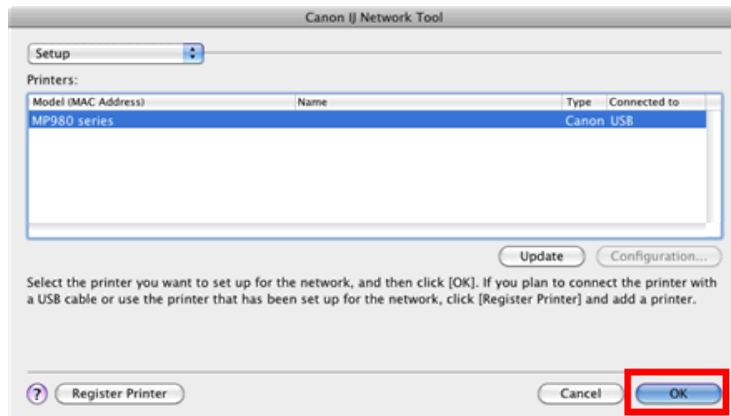


If the **Setup Preparations** dialog box appears, confirm that preparation is complete and click **OK**.

Downloading and Installing the Drivers

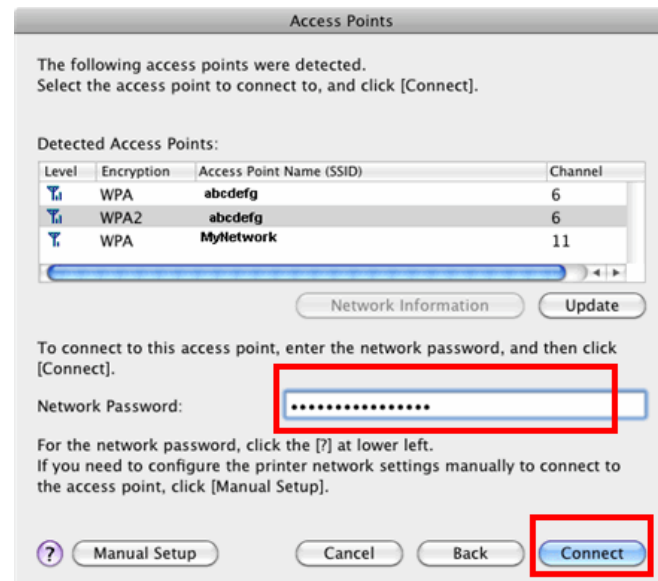
Step Eleven

Select the printer to be used on the network and click **OK**.



Step Twelve

When the **Access Points** screen appears, select an access point to use, enter the Network password or key then click **Connect**

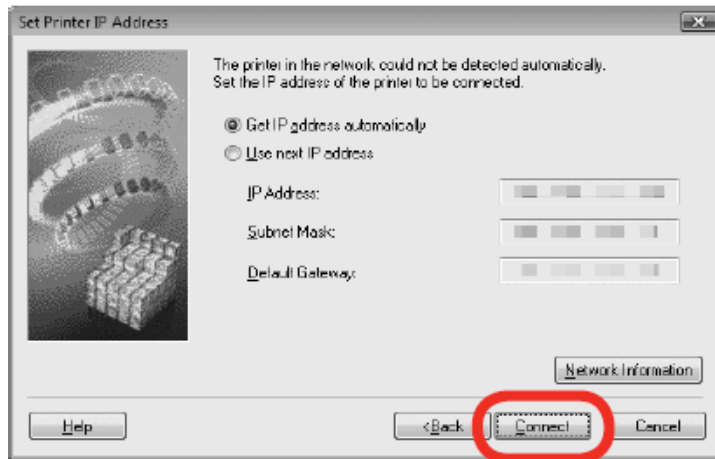


When an access point is detected automatically, the **Access Points** screen **does not** appear.

Downloading and Installing the Drivers

Step Thirteen

When the **Set Printer IP Address** screen appears, confirm the contents, then click **Connect**.



If the machine is detected automatically, the **Set Printer IP Address** screen **does not** appear.

Step Fourteen

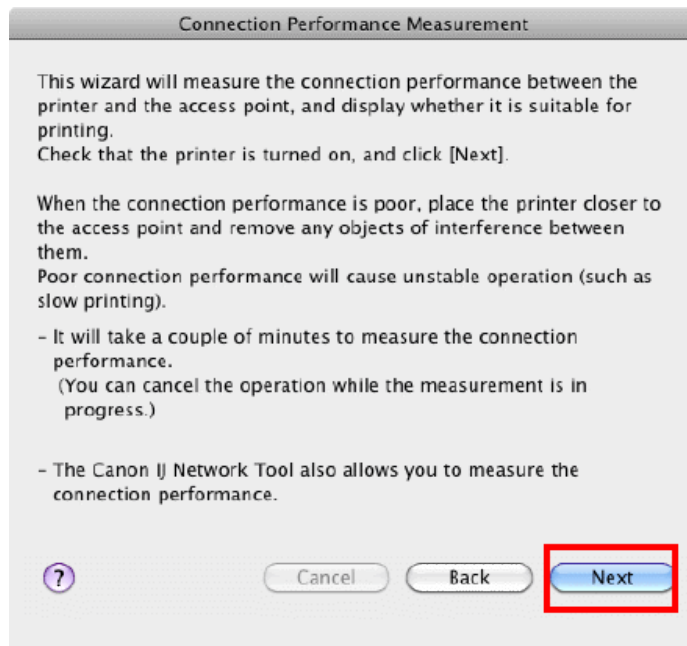
When the **Setup Completion** dialog box appears, remove the USB cable, then click **Next**.



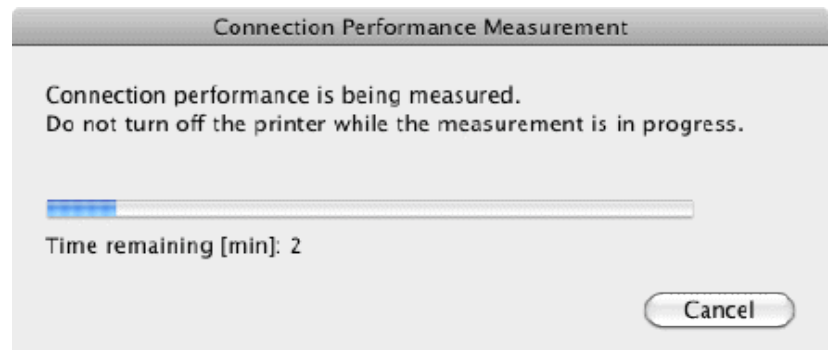
Downloading and Installing the Drivers

Step Fifteen

On the **Connection Performance Measurement** dialog box, click **Next**.



Measuring of the communication status starts, and the results are displayed.

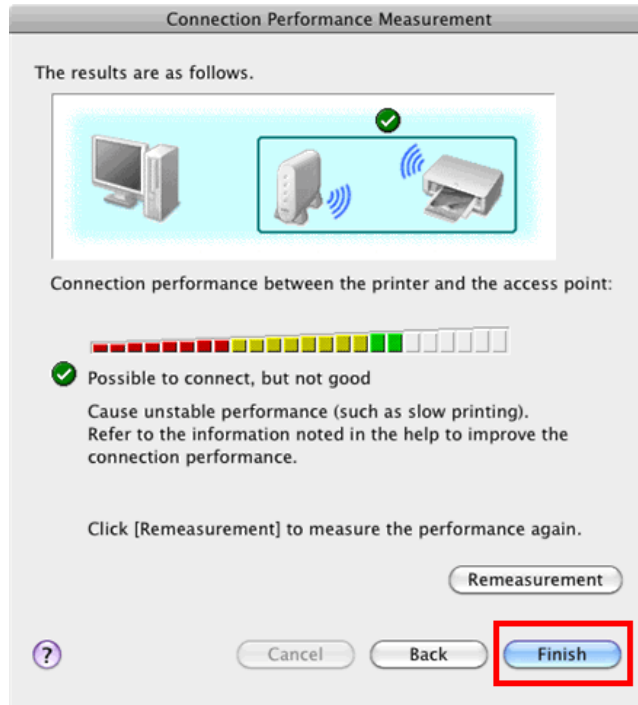


Note : Measuring takes a few minutes. Measuring can be cancelled by clicking **Cancel**. You also examine the detailed status of the communication link after setup by using the Canon IJ Network Tool.

Downloading and Installing the Drivers

Step Sixteen

Confirm the measurement results, then click **Finish**.



Ensure that ✓ is displayed in Connection performance between the printer and the access point.

The **Printer Setup Utility** and **Canon IJ Network Scanner Selector** will start up.

If any symbol other than ✓ is displayed, refer to displayed comments and Help ? for improving the status of communication link.

To check whether the new location is better, click **Remeasurement**. Measurement of the communication status is performed again.

When any message on Overall network performance appears in the measurement results, rearrange the printer and other network devices following the instructions on the screen.

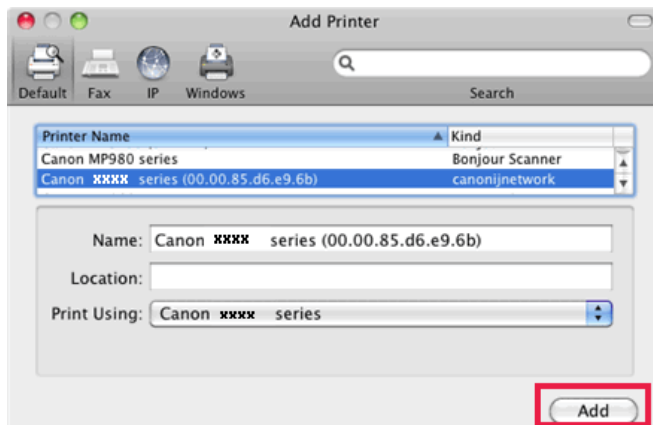
Downloading and Installing the Drivers

Adding the Machine

This section describes how to register the machine on a Macintosh computer.

Step One

Wait for a while, then select **Canon xxxx series** ('xxxx' refers to model) and click **Add**.

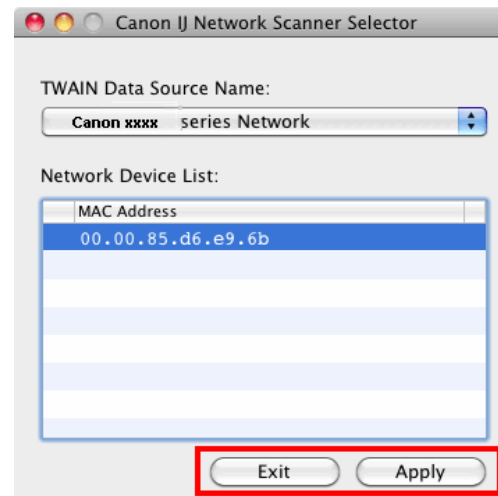


Note :

- The alphanumeric string after Canon xxxx series is the machine's MAC address.
- If the machine has not been detected, make sure of the following.
 - The machine is turned on.
 - The firewall function of any security software is turned off.
 - The computer is connected to the access point.
 - The machine is not set to use access control (MAC address filtering).

Step Two

On the **Canon IJ Network Scanner Selector** screen, select **Canon xxxx series Network** ('xxxx' refers to model) in **TWAIN Data Source Name** and the MAC address of the machine in **Network Device List**, then click **Apply** to use the machine as a scanner.



Confirm that a check mark is displayed, then click **Exit** to close the dialog box. **Installation is completed.**