

# Installing Your Multifunction to Your Network for the First Time

PIXMA MX350 / PIXMA MX870

Windows OS

# Installing Your Multifunction to Your Network for the First Time

PIXMA MX350 / PIXMA MX870

Windows OS

<b>Preparing to Connect My Multifunction to My Network</b>	<b>3</b>
Network Requirements	3
Important Information You Need Before Adding Your Multifunction	4
<b>Adding Your Multifunction to the Network</b>	<b>5</b>
Confirm Connection Status	9
<b>Downloading &amp; Installing the Drivers</b>	<b>11</b>
Download the Driver	11
Installing the Driver	14

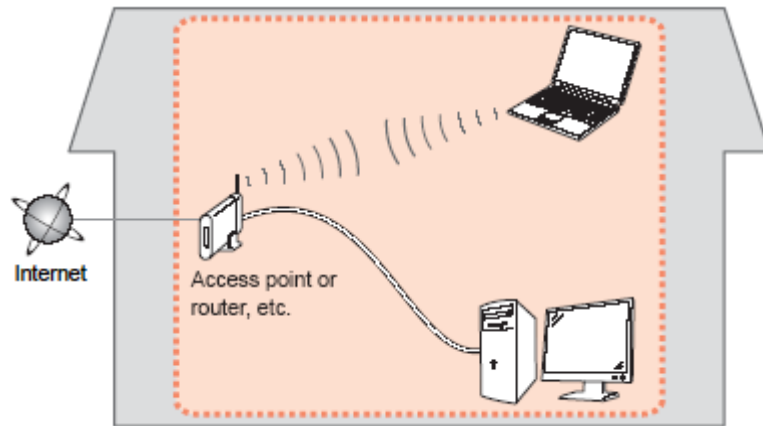
# Preparing to Connect My Multifunction To My Network

[<< Previous](#)

[Next >>](#)

## Network Requirements

Before connecting the machine to the network, make sure that configuration of the computer and access point or router is complete, and that the computer is connected to the network.



### Notes on Network Connection

- The configuration, router functions, setup procedures and security settings of the network device vary depending on your system environment. For details, refer to your device's instruction manual or contact its manufacturer.
- The machine cannot be used over a wireless and wired connection at the same time.

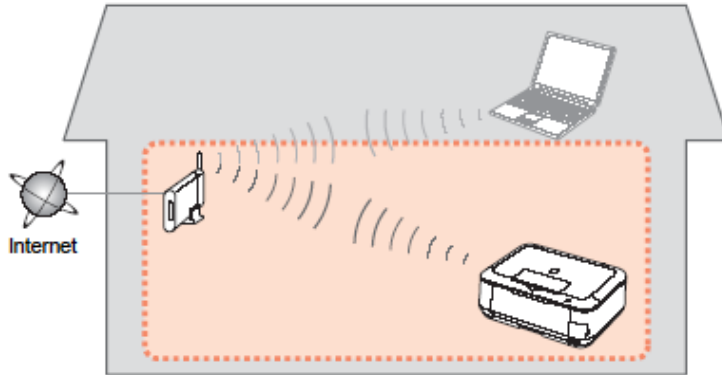
### Wireless Connection

Connect to your network environment over a wireless connection.

# Preparing to Connect My Multifunction To My Network

[<< Previous](#)

[Next >>](#)



An "Ad-hoc connection," which establishes a direct connection to the computer over a wireless connection without using an access point, is not supported.

**Be sure to prepare an access point.**

## **Important Information You Need Before Adding Your Multifunction**

The following information is required to connect to your access point or router.

- **Access Point Name/Network Name:**

Also referred to as **SSID**. A name to identify the specific access point.

- **Network Key:**

Also referred to as encryption key, WEP key or WPA/WPA2 passphrase, Pre-Shared key.

A password required to set to prevent unauthorized access to communication.

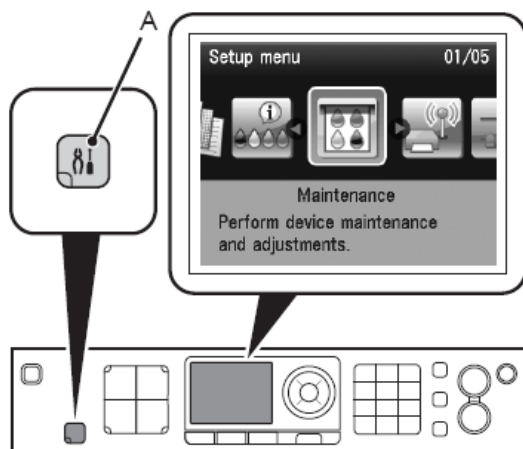
Check your access point or router for the following information, and then write it down.

**NOTE:** For details on how to check the following information, refer to the manual of your access point or router, or contact its manufacturer.

## Adding Your Multifunction to Your Network

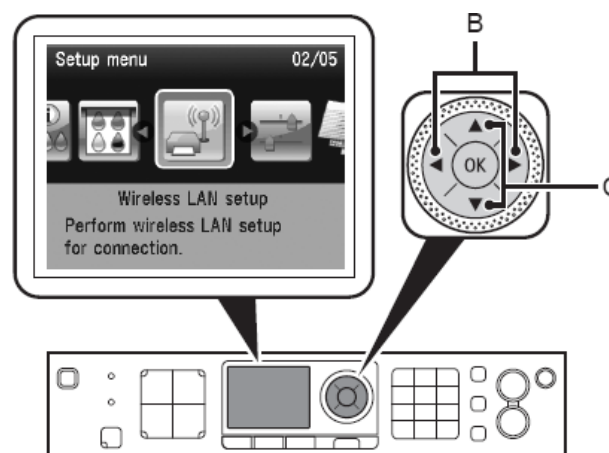
### Step One

Press the **Setup** button (A)



### Step Two

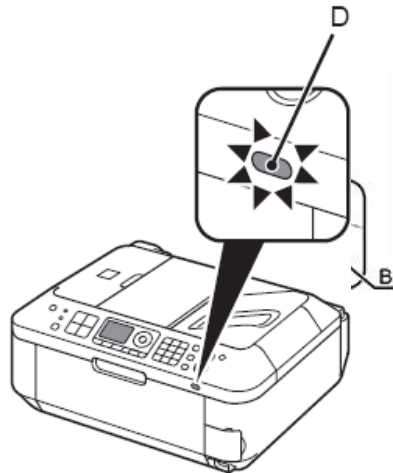
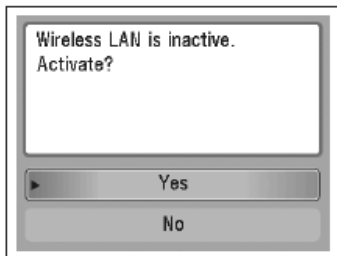
Select **Wireless LAN setup**, and then press the **OK** button.



## Step Three

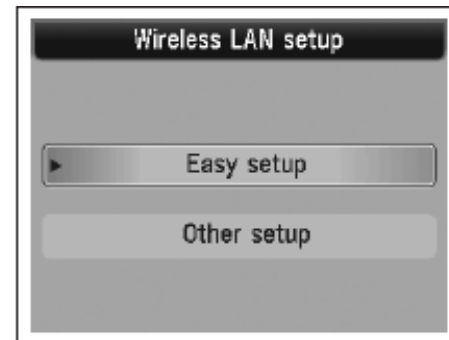
Select **Yes**, then press the **OK** button.

When wireless connection is enabled, the Wi-Fi lamp (D) lights blue.



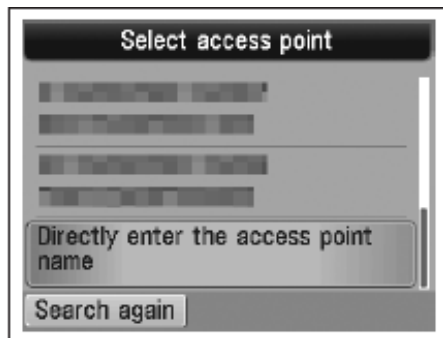
## Step Four

Select **Easy setup**, and then press the **OK** button.



## Step Five

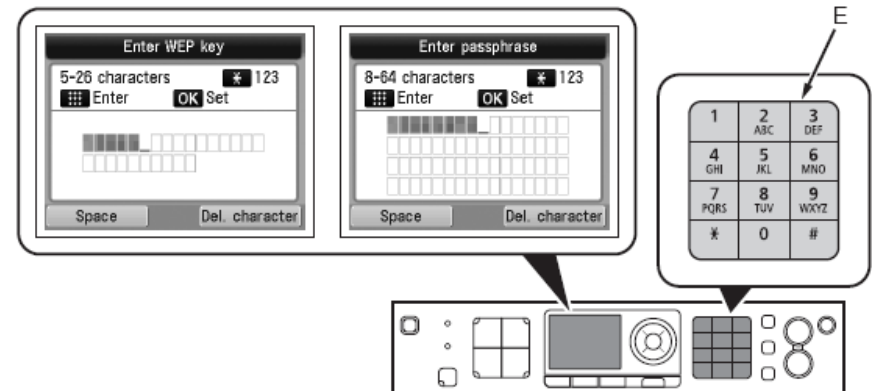
Select the access point name, then press the **OK** button.



**NOTE:** If you are living in an apartment, nearby access points in use may be detected.

## Step Six

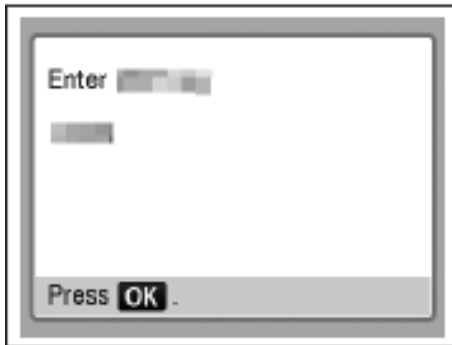
When one of the following screens is displayed, enter the network key using the Numeric buttons (E), then press the **OK** button.  
If the following screen is not displayed, go to step 8



Press the **X** button to switch character entry modes.  
Enter upper and lower case letters of the alphabet correctly

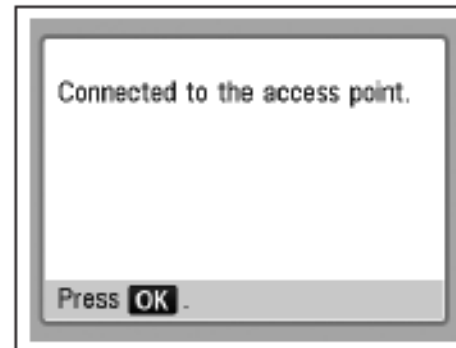
## Step Seven

Make sure that the network key is correct, and then press the **OK** button.



## Step Eight

When the connected to the access point screen appears, press the **OK** button.



The **Setup menu** screen returns.

**NOTE:** If **Failed to connect to the access point.** appears, press the **OK** button, make sure that the network key is correct, then enter it again. If a connection still cannot be established, refer to the printed manual: **Network Setup Troubleshooting.**



## Confirm Connection Status

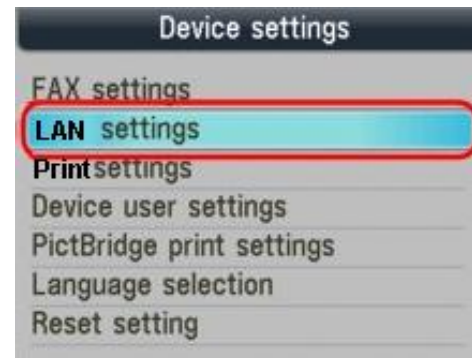
### Step One

On the **Setup menu**, select **Device Settings**  , and then press the **OK** button.

**IMPORTANT:** Confirm connection status after installing the machine in the target location.

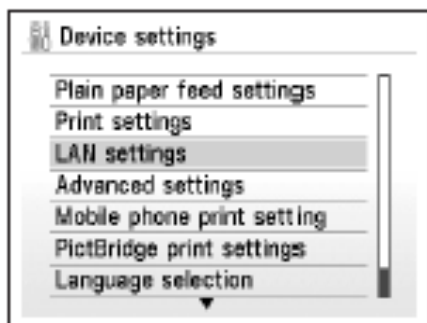
### Step Two

Select **LAN settings**, and then press the **OK** button.



## Step Three

Select **Confirm LAN settings**, then press the **OK** button.



## Step Four

Select **WLAN setting list**, then press the **OK** button.

Make sure that Connection is set to **Active**, and then press the **Copy** button to return to standby.

It may take a while before the connection is complete. In this case, press the Back\* button and wait for about a minute, then display the Wireless LAN setting list screen again.

\*Back button location varies depending on model.

**NOTE:** If the communication status does not improve, make sure of the following.

- The machine and network device are turned on.
- There is no obstacle between the machine and access point, and wireless communication is possible.
- There is no microwave, refrigerator or any other object that may cause radio interference nearby.

## Downloading the Driver

To use the machine by connecting it to a computer, software including the drivers needs to be copied (installed) to the computer's hard disk. The installation process takes about 20 minutes. (The installation time varies depending on the computer environment or the number of applications to be installed.)

### Step One

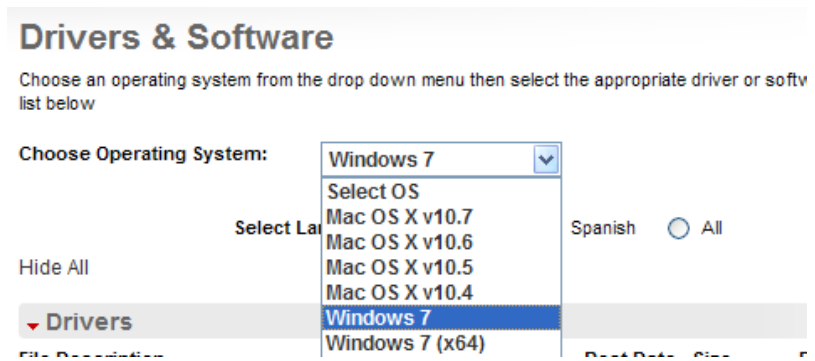
Go to the **Drivers & Software** for your model

[MX350](#)

[MX870](#)

### Step Two

Select your operating system in the **Select OS** dropdown menu.



## Step Three

In the Drivers section, click the link\* (the “.exe” file) for the **MP Driver**

**\*Name varies by model**

example: MX350

▼ Drivers			
File Description	Post Date	Size	Download
<a href="#">MX350 series MP Driver Ver. 1.04 (Windows 7/7..</a> File Name: mp990swin104ej.exe	09/07/10	17.36MB	

\* The file name turns red when the mouse pointer is on the file name

## *Step Four*

On the next screen, read the information and instructions and click **I Agree - Begin Download**

Select [Save] or [Run]. If [Run] is selected, the file will be automatically installed

If [Save] is selected, once the file has been downloaded, double-click it to begin the installation process

### **IMPORTANT:**

- Quit all running applications before installation.
- Log on as the administrator (or a member of the Administrators group).
- Do not switch users during the installation process.
- Internet connection may be required during the installation. Connection fees apply.
- It may be necessary to restart your computer during the installation process. Follow the on-screen instructions. The installation resumes once your computer has restarted.

If the firewall function of your security software is turned on, a warning message may appear that Canon software is attempting to access the network. If such a warning message appears, set the security software to always allow access.

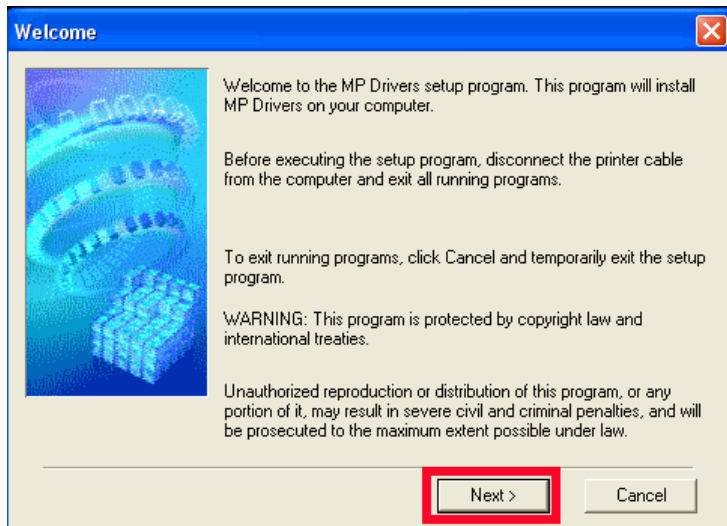
## Installing the Driver

**NOTE:** If a **User Account Control** screen appears, click **Continue** or **Yes** (depending on Windows version) to continue.

**NOTE:** If the same screen reappears in subsequent steps, click **Continue** or **Yes**.

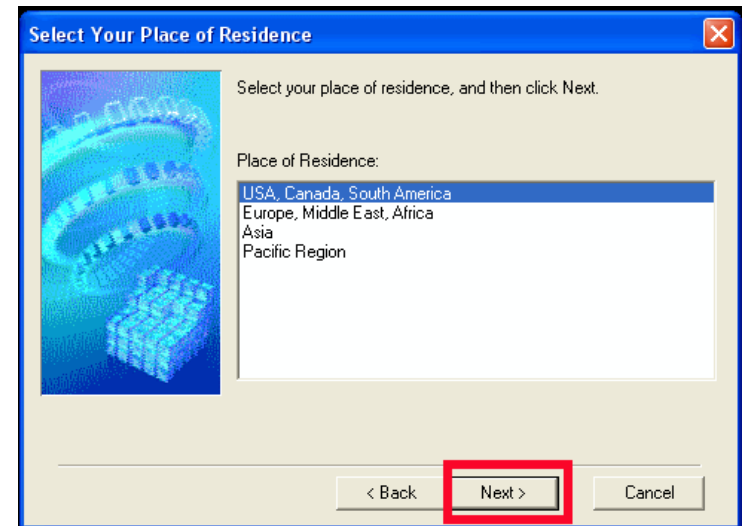
### Step One

Click **Next** on the **Welcome** screen.



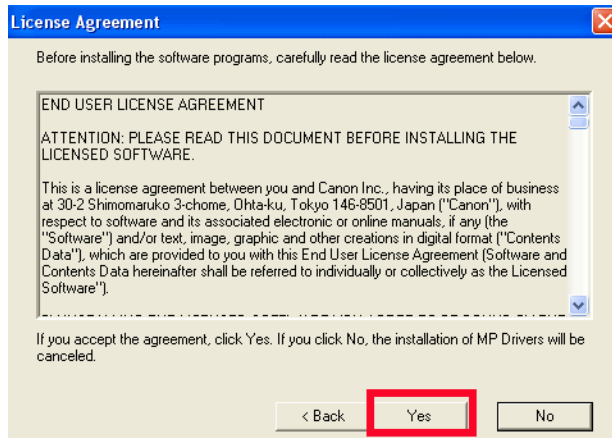
### Step Two

Select your place of residence and click **Next**.

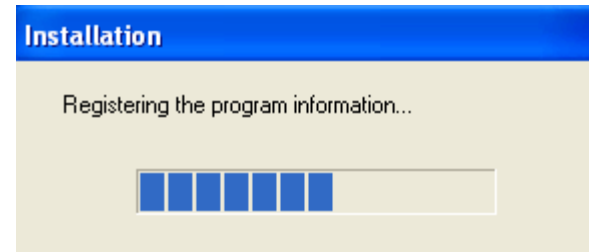


## Step Three

Click **Yes** for the License Agreement.

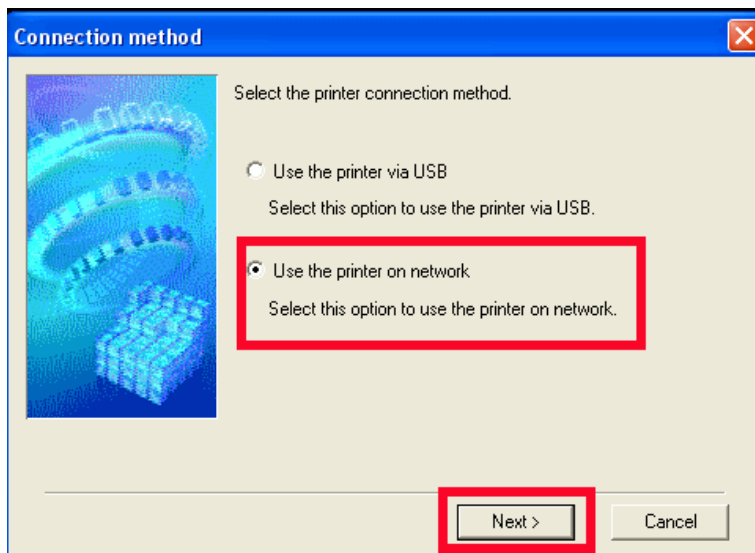


Installation proceeds



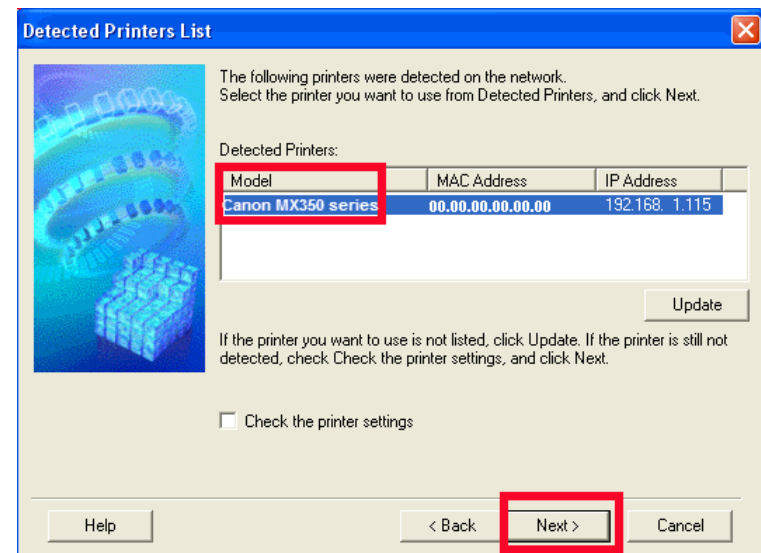
## Step Four

Select **Use the Printer on network** on the **Connection method** screen, and then click **Next**.



## Step Five

After searching for printers, the **Detected Printers List** appears. Verify your printer is detected and click **Next**.





## Step Six

Setup will install the driver components. After completion, click **Complete** on the **Setup Completion** screen.

