



# **Getting Your Multifunction Back On Your Network After A Router Or Network Change**

**PIXMA MX410  
Windows OS**

If any of the following situations exist, you will need to Uninstall and Re-Install the MP Drivers

- You have replaced your Router or Access Point
- You want to use a different wireless network
- Router settings have been changed.

# Uninstalling and Re-installing Your Multifunction to Your Network

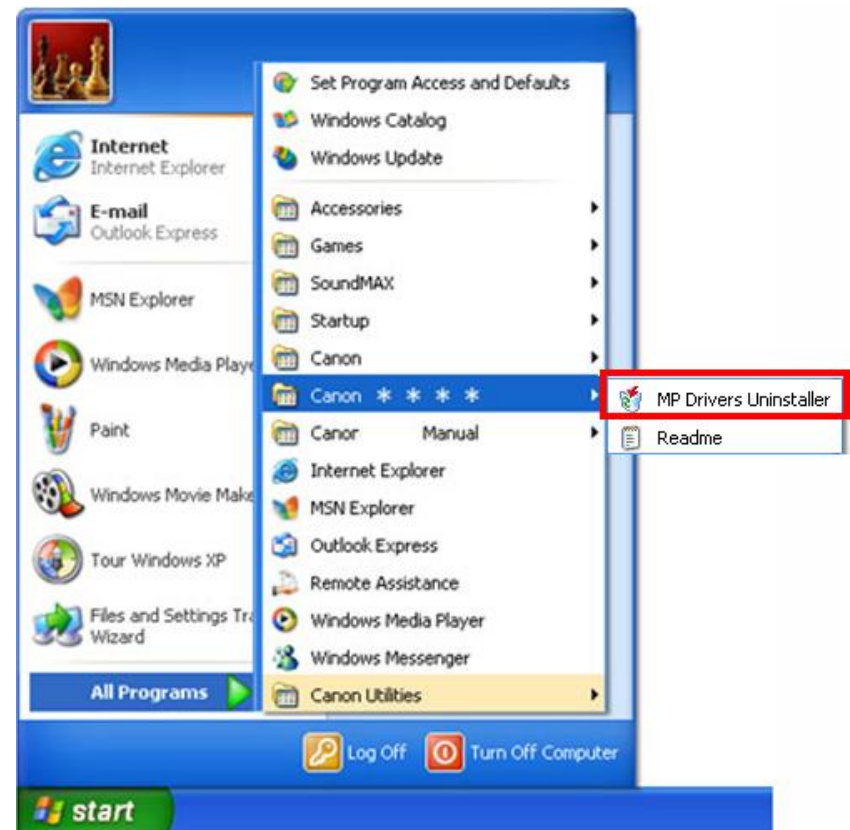
PIXMA MX340  
Windows OS

<b>Uninstalling the Multifunction Drivers</b>	<b>4</b>
<b>Preparing to Connect My Multifunction to My Network</b>	<b>6</b>
Network Requirements	6
Important Information You Need Before Adding Your Multifunction	7
<b>Downloading &amp; Installing the Drivers</b>	<b>8</b>
Download the Driver	8
Installing the Driver	10

# Uninstalling the Multifunction Drivers

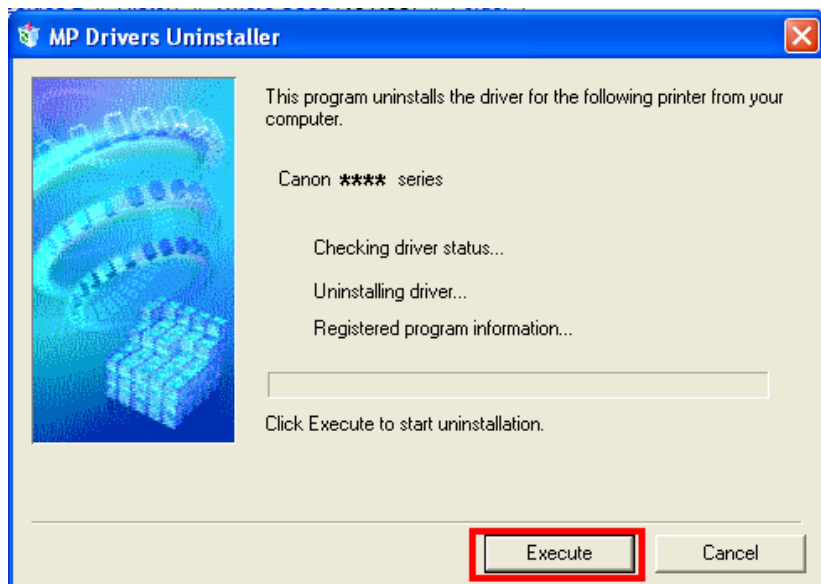
Note: Login as a user with Administrator privileges to uninstall . Turn off any programs running in the background, such as antivirus programs and firewalls before beginning.

1. Select 'All Programs' (for Windows XP / Vista / 7) from the Start menu.
2. Select the name of the printer model to remove and select 'MP Drivers Uninstaller.'

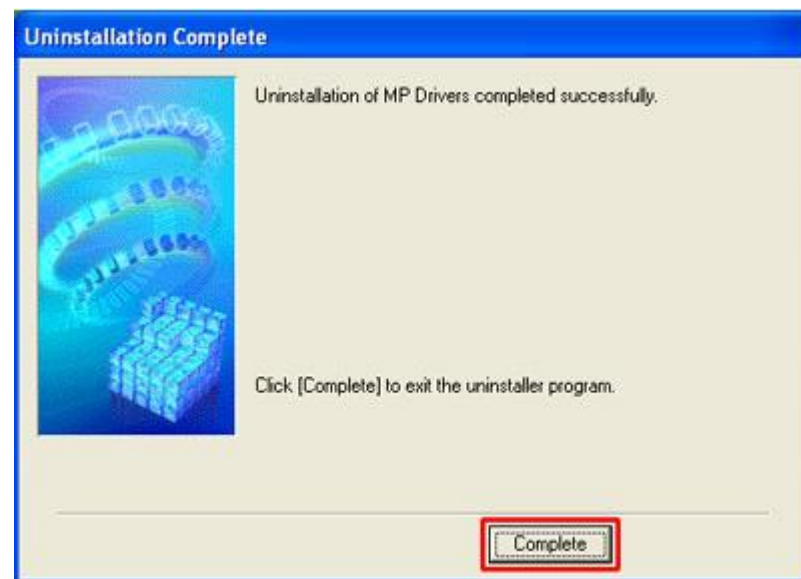


# Uninstalling the Multifunction Drivers

3. When the MP Drivers Uninstaller window is displayed, click 'Execute.'



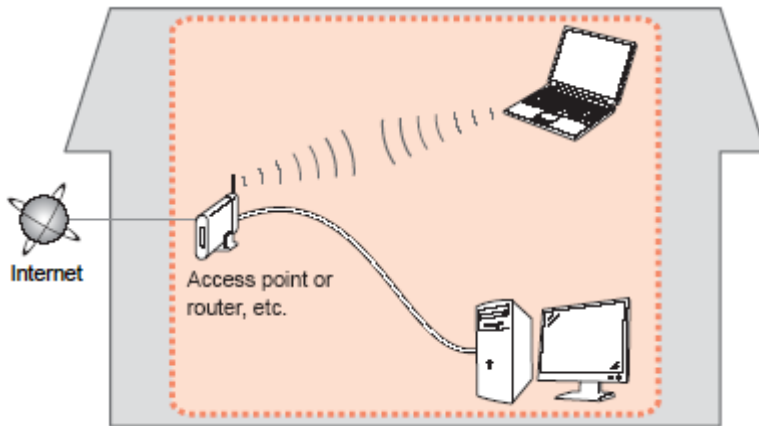
4. When the confirmation window is displayed, click 'Yes.'
5. When the Uninstallation Complete window is displayed, click 'Complete.'



# Preparing to Connect My Multifunction To My Network

## Network Requirements

Before connecting the machine to the network, make sure that configuration of the computer and access point or router is complete, and that the computer is connected to the network.



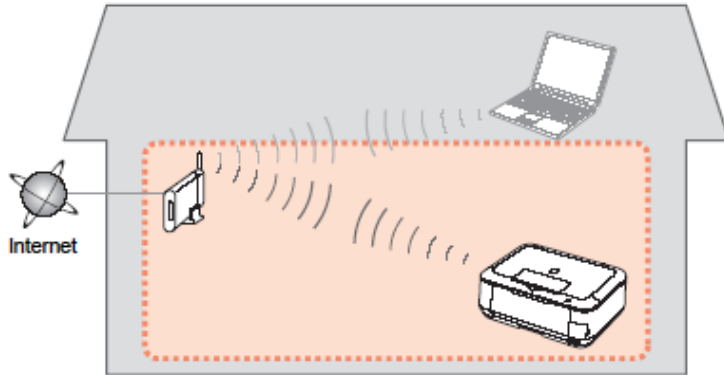
### Notes on Network Connection

- The configuration, router functions, setup procedures and security settings of the network device vary depending on your system environment. For details, refer to your device's instruction manual or contact its manufacturer.
- The machine cannot be used over a wireless and wired connection at the same time.

### Wireless Connection

Connect to your network environment over a wireless connection.

# Preparing to Connect My Multifunction To My Network



An "Ad-hoc connection," which establishes a direct connection to the computer over a wireless connection without using an access point, is not supported.

**Be sure to prepare an access point.**

## Important Information You Need Before Adding Your Multifunction

The following information is required to connect to your access point or router.

- **Access Point Name/Network Name:**

Also referred to as **SSID**. A name to identify the specific access point.

- **Network Key:**

Also referred to as encryption key, WEP key or WPA/WPA2 passphrase, Pre-Shared key.

A password required to set to prevent unauthorized access to communication.

Check your access point or router for the following information, and then write it down.

**NOTE:** For details on how to check the following information, refer to the manual of your access point or router, or contact its manufacturer.

# Downloading and Installing the Drivers

## Downloading the Driver

To use the machine by connecting it to a computer, software including the drivers needs to be copied (installed) to the computer's hard disk. The installation process takes about 20 minutes. (The installation time varies depending on the computer environment or the number of applications to be installed.)

### *Step One*

Go to the Canon USA web site

[Click here to go to MX410 Drivers & Downloads](#)

### *Step Two*

In the **Drivers / Software Selection** section, select your operating system in the **Operating System** dropdown menu.

### *Step Three*

Under the **Drivers** tab, click the **Select** box for the **MX410 series MP Driver Ver. 1.02 (Windows)**, then click the **Download** button.



# Downloading and Installing the Drivers

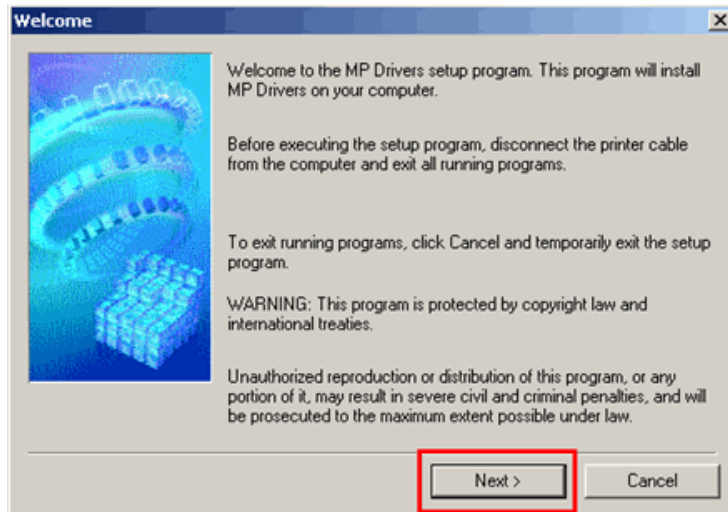
## Installing the Driver

**NOTE:** If a **User Account Control** screen appears, click **Continue** or **Yes** (depending on Windows version) to continue.

**NOTE:** If the same screen reappears in subsequent steps, click **Continue** or **Yes**.

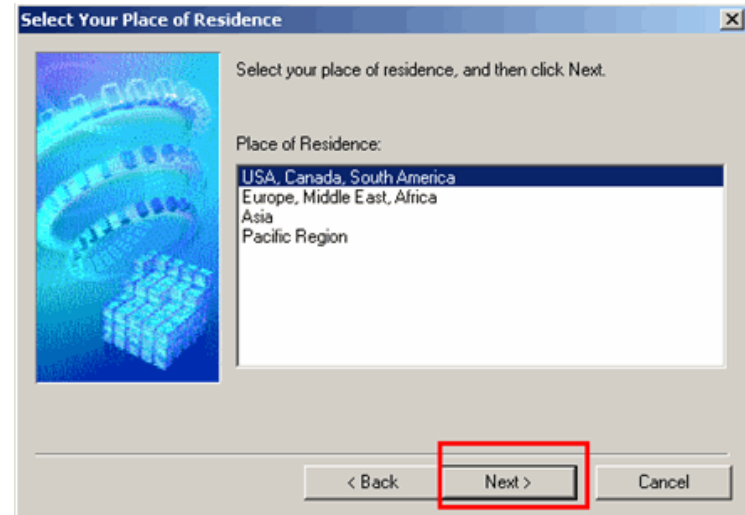
### Step One

Click **Next** on the **Welcome** screen.



### Step Two

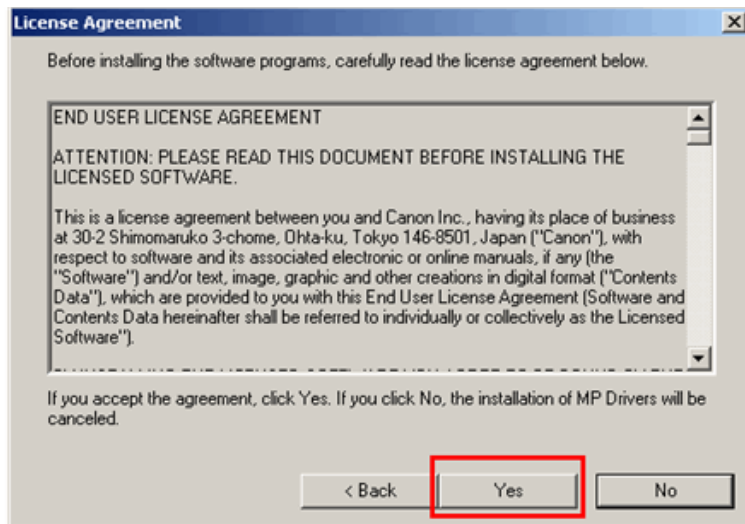
Select your place of residence and click **Next**.



# Downloading and Installing the Drivers

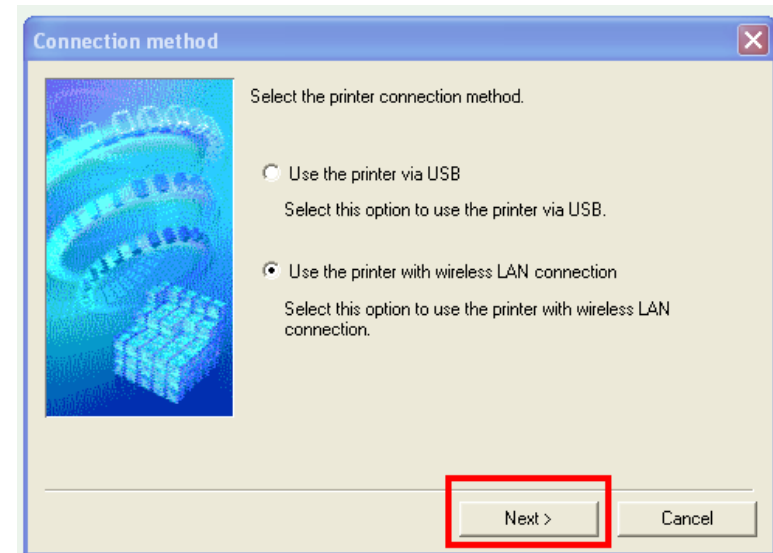
## Step Three

Click **Yes** for the License Agreement.



## Step Four

At the **Connection method window**, click Use the printer with wireless LAN connection, then click Next



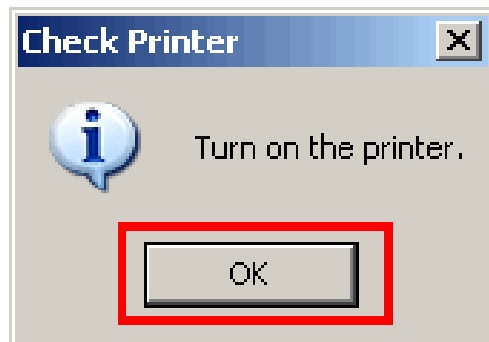
If the **Please Allow All Install Wizard Processes** screen appears, click **Next**.

Installation starts. Follow any on-screen instructions to install the software.

# Downloading and Installing the Drivers

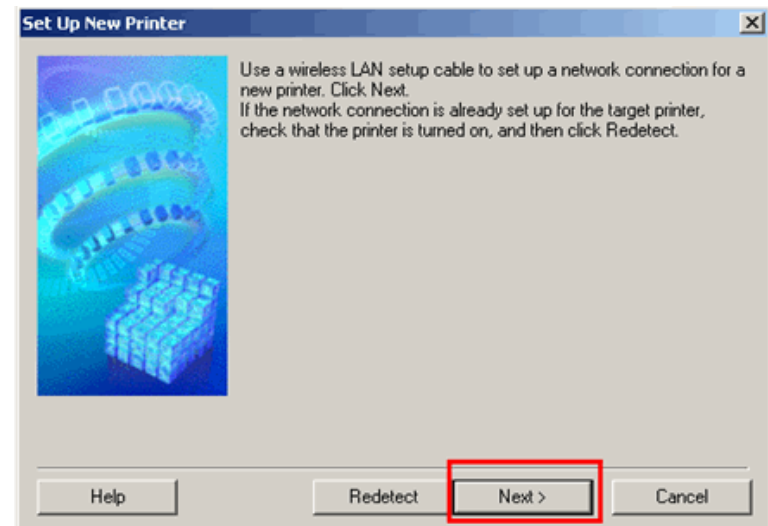
## Step Five

Confirm the printer is powered on and then click **OK**.



## Step Six

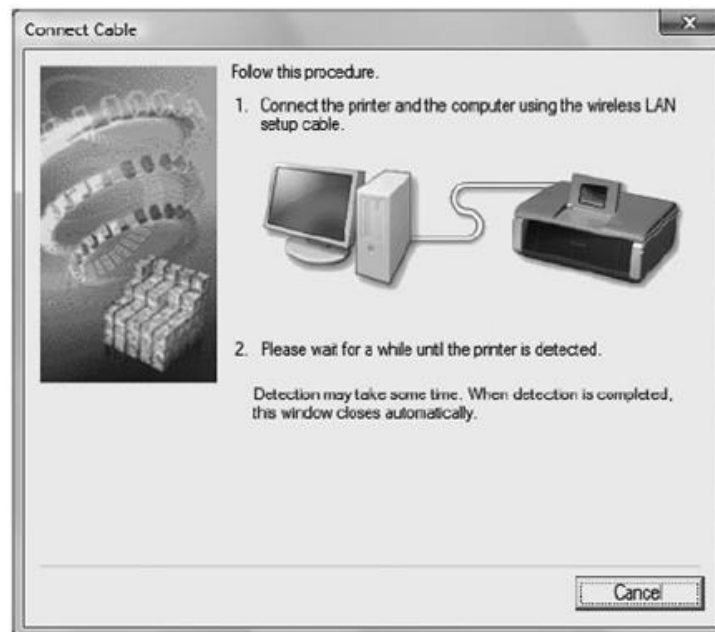
Click **Next** on the **Set Up New Printer** window.



# Downloading and Installing the Drivers

## *Step Seven*

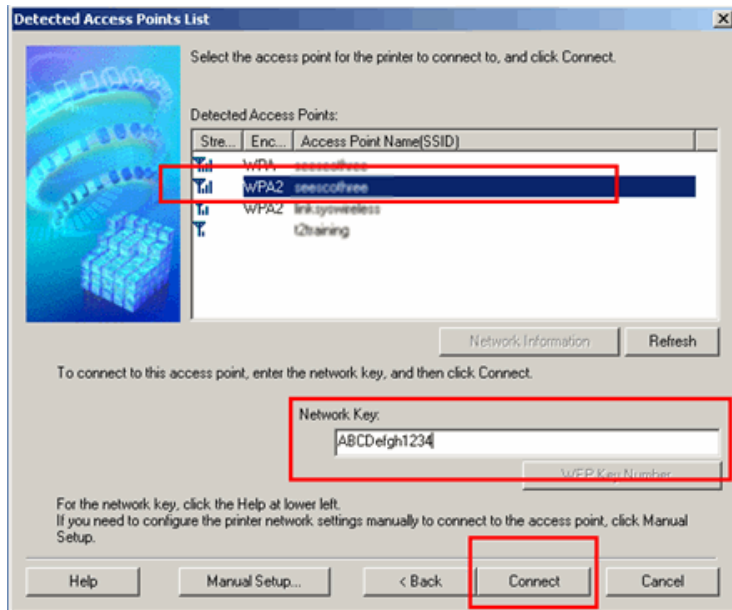
Connect the computer and printer with the network setup cable (USB cable)



# Downloading and Installing the Drivers

## Step Eight

If the **Detected Access Points List** screen appears, select the target access point name/network name (SSID), enter the network key and click **Connect**.



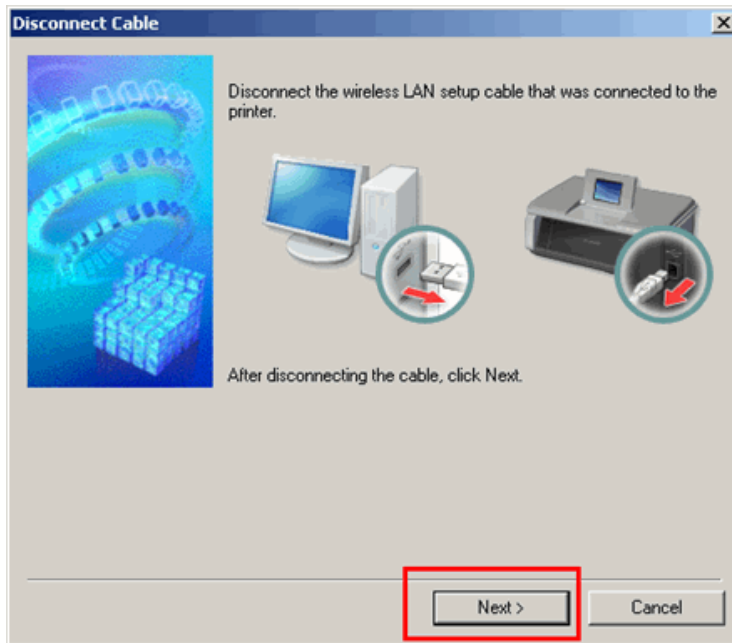
If the **Confirm Connection Access Point** screen appears, make sure that the target access point is displayed, then click **Yes**.



# Downloading and Installing the Drivers

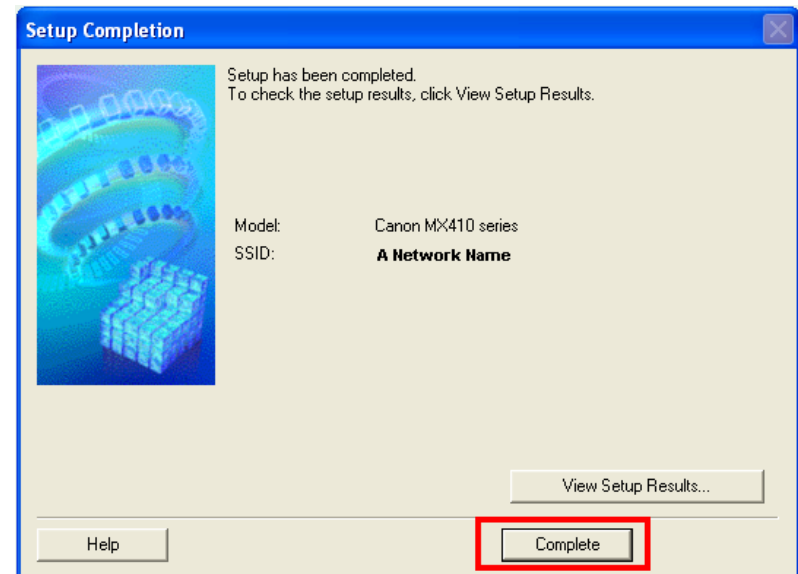
## Step Nine

Remove the Wireless LAN setup cable, then click **Next**.



## Step Ten

Click **Complete** on the **Setup Completion** screen.



Wireless setup is now complete