

# Getting Your Multifunction Back On Your Network After A Router Or Network Change

PIXMA MX340 / MP495 / MP620 / MX860 / MP980

Mac OS

If any of the following situations exist, run the Canon IJ Network tool to send the new configuration settings to your printer\*:

- You have replaced your Router or Access Point
- You want to use a different wireless network
- Router settings have been changed.

\* You must connect the printer and computer via USB cable temporarily in order to send the settings information to your printer.

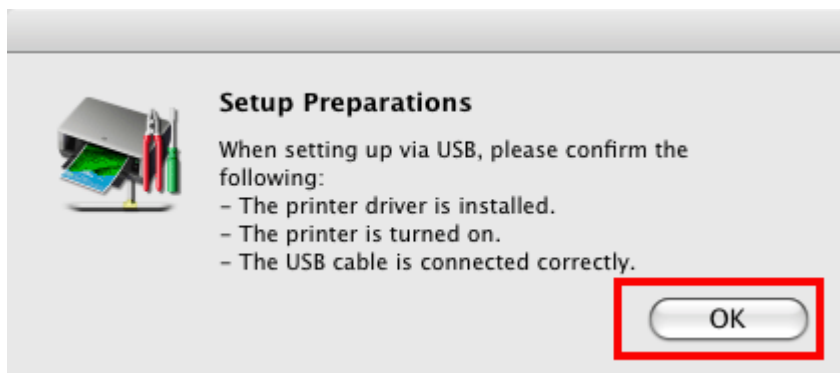
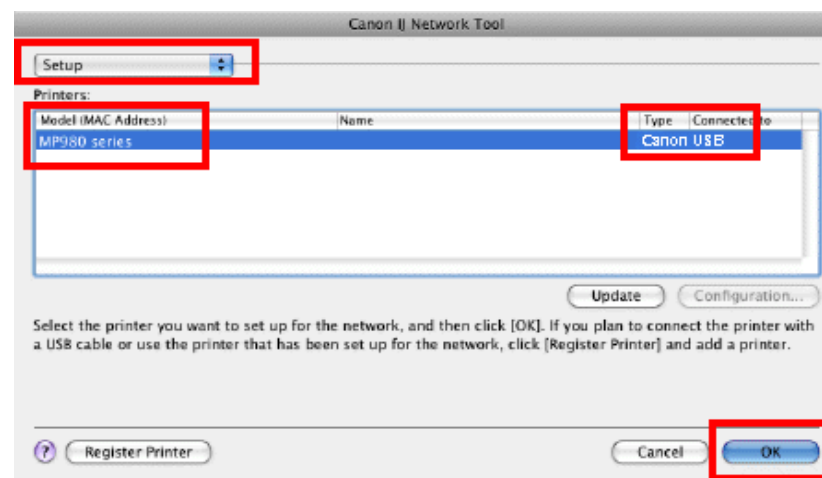
# Run the Canon IJ Network Tool

[<< Previous](#)

[Next >>](#)

1. Verify you are connected to the network (SSID) you will be using with the printer.
2. Start the IJ Network Tool by browsing to the Library\Printers\Canon\BJPrinter\Utilities folder and double-click **Canon IJ Network Tool**
3. When the Network Tool finishes searching, select **Setup** in the dropdown list at the upper left of the window
4. If the following message appears, click **OK** to continue.

5. On the Setup screen, select the model, then click **OK**. The **type** will be listed as **Canon USB**.



6. On the **Confirm Connection Access Point** screen, verify that the Access point is the one to which you wish to connect, then click Yes. If you wish to connect to a different Access Point, click No and proceed to Step 7.



If the **Confirm Access to Keychain** dialog appears, click **Allow**.



# Run the Canon IJ Network Tool

[<< Previous](#)

[Next >>](#)

7. On the **Access Points** screen, select the Access Point to be used , enter the network password in the space provided and click **Connect**. If you are not using encryption (not recommended), this step is skipped. If you do not know this password, you may be able to obtain it using the Canon PIXMA Wireless Setup Assistant.

Access Points

The following access points were detected.  
Select the access point to connect to, and click [Connect].

Detected Access Points:

Level	Encryption	Access Point Name (SSID)	Channel
iii	WPA	Apple Network Xpress	11
Tii	WPA2	Apple Network Xpress	11
Ti		Apple AirPort Xtreme	1
Ti	WPA	<b>MyNetwork</b>	6

Network Information Update

To connect to this access point, enter the network password, and then click [Connect].

Network Password: .....

For the network password, click the [?] at lower left.  
If you need to configure the printer network settings manually to connect to the access point, click [Manual Setup].

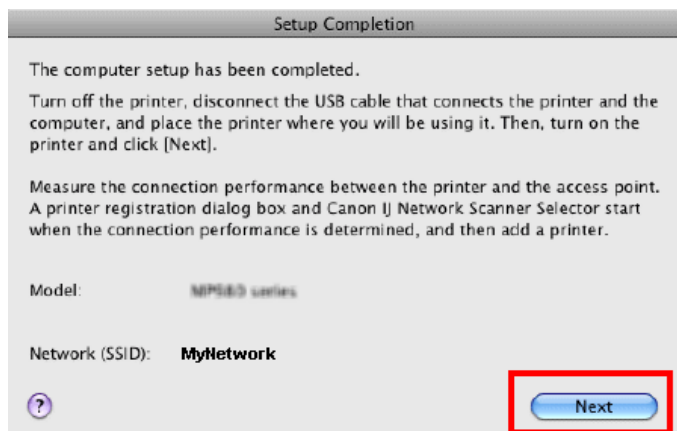
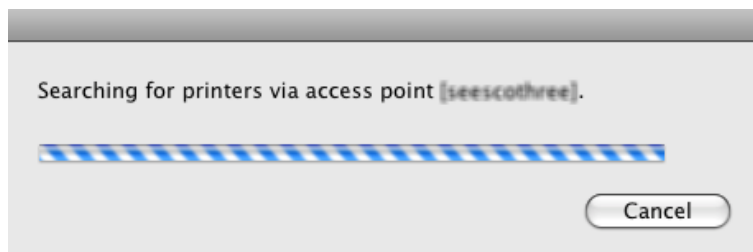
? Manual Setup Cancel Back **Connect**

# Run the Canon IJ Network Tool

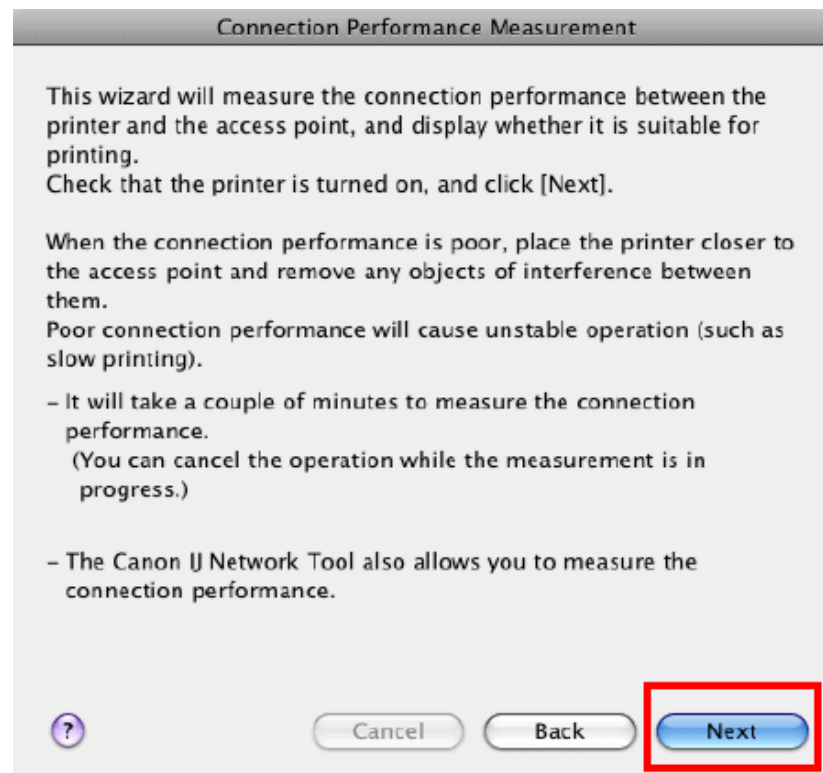
[<< Previous](#)

[Next >>](#)

8. After searching for printers, the **Setup Completion** window appears. Click **Next**.



9. Click **Next** on the **Connection Performance Measurement** screen. The **Connection Performance Measurement** screen only appears when using the oldest version of the IJ Network Tool. Skip to **Step 11** if the **Connection Performance Measurement** screen does not appear.

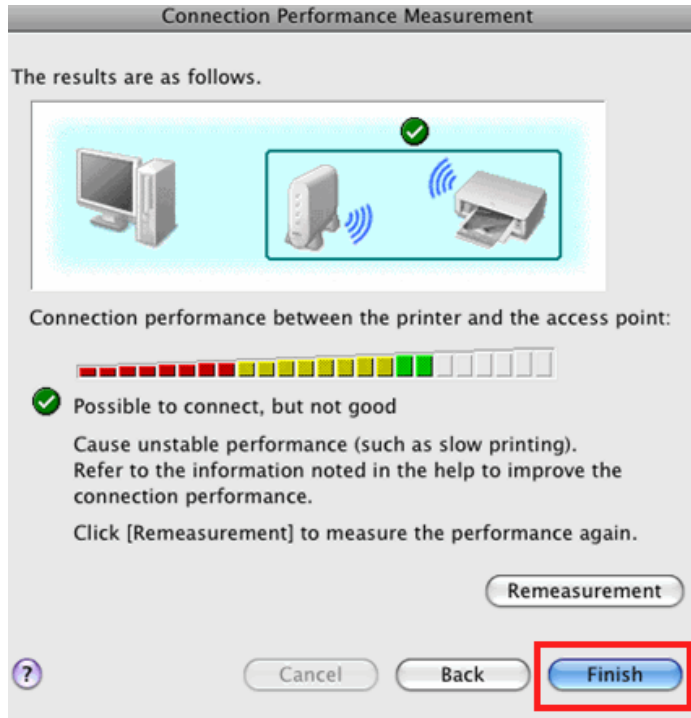


# Run the Canon IJ Network Tool

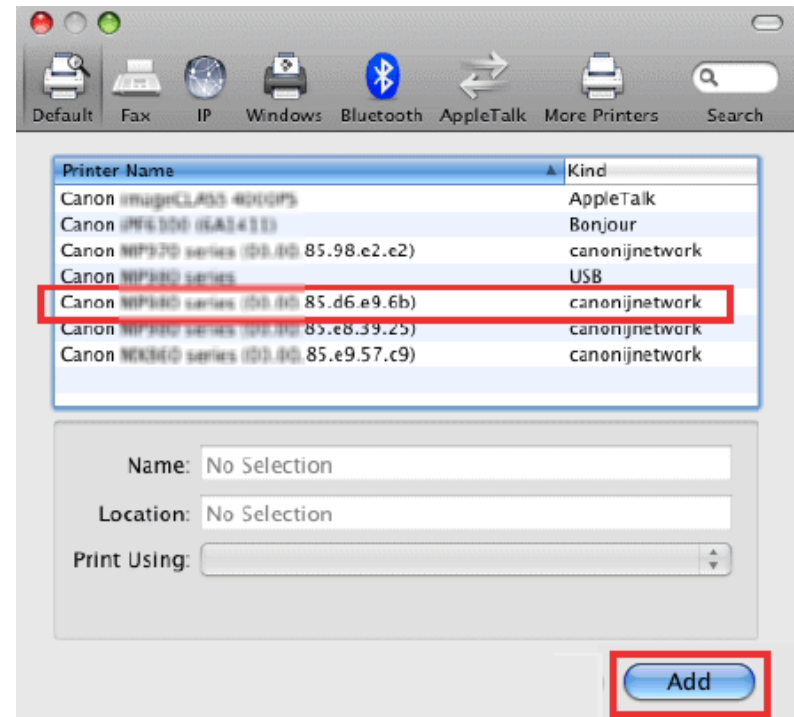
[<< Previous](#)

[Next >>](#)

10. When the measurement has completed, click **Finish**.



11. Select the printer and click **Add**. Be sure **canonijnetwork** is listed in the **Kind** column.

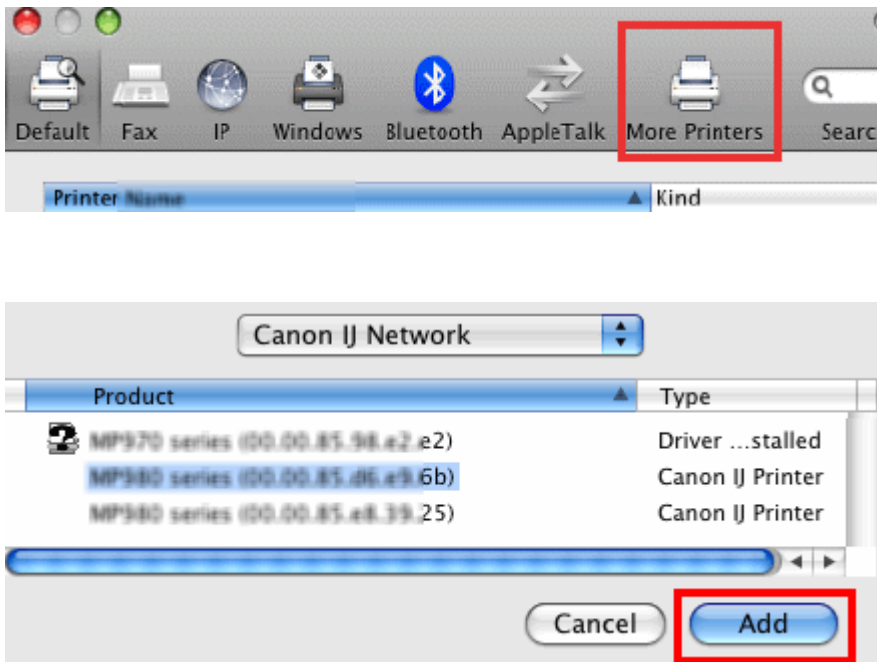


\*This window varies by OS version

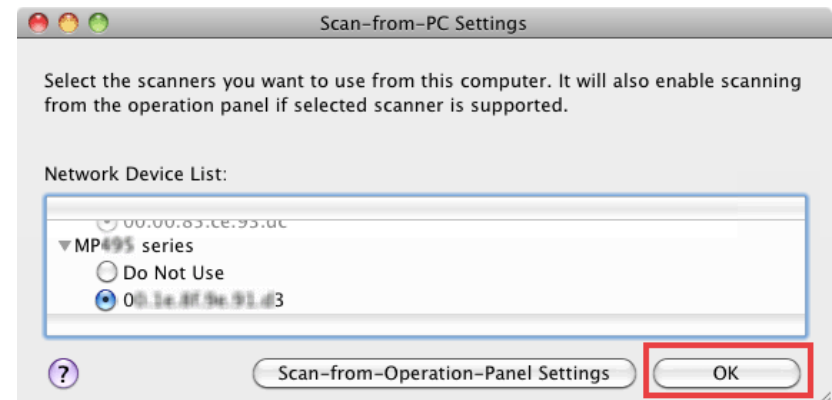
# Downloading and Installing the Drivers

[<< Previous](#)

If the default printer browser does not list the network printer, click **More Printers** and select **Canon IJ Network** in the dropdown. Then select the printer and click **Add**.



12. Select the scanner on the Scan-from-PC settings screen, then click **OK**



13. At this point setup is complete. If any more Canon IJ Network Tool screens appear, close or cancel them, then disconnect the USB cable.