

Getting Your Multifunction Back On Your Network After A Router Or Network Change

PIXMA MX882
Windows & Mac OS

If any of the following situations exist

- You have replaced your Router or Access Point
- You want to use a different wireless network
- Router settings have been changed.

Please complete the following steps to apply the new configuration settings to your multifunction.

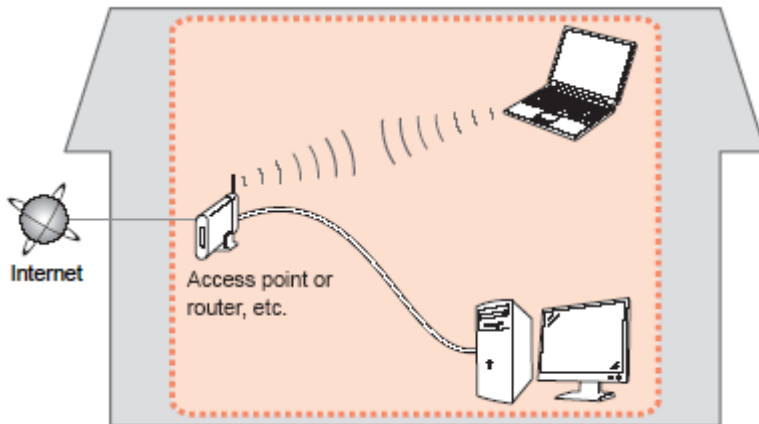
Preparing to Connect My Multifunction To My Network

[<< Previous](#)

[Next >>](#)

Network Requirements

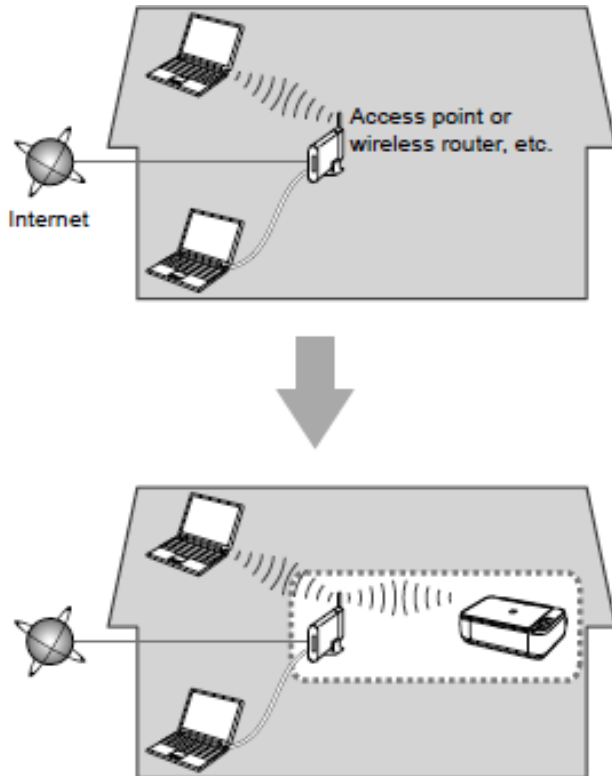
Before connecting the machine to the network, make sure that configuration of the computer and access point or router is complete, and that the computer is connected to the network.



Preparing to Connect My Multifunction To My Network

[<< Previous](#)

[Next >>](#)



An "Ad-hoc connection," which establishes a direct connection to the computer over a wireless connection without using an access point, is not supported.

Be sure to prepare an access point.

Notes on Network Connection

- The configuration, router functions, setup procedures and security settings of the network device vary depending on your system environment. For details, refer to your device's instruction manual or contact its manufacturer.
- In an office setup, consult your network administrator
- If you connect to a network that is not protected with security measures, there is a risk of disclosing data such as your personal information to a third party.
- If an error message appears or if you have trouble with the network connection, refer to the printed manual: Network Setup Troubleshooting.
- Place the machine and computer on the same network segment.

Preparing to Connect My Multifunction To My Network

[<< Previous](#)

[Next >>](#)

Before you continue, please gather the following information which will be required to connect your multifunction to your network. This information will be entered on the machine's operation panel.

- Access Point /Network Name: also referred to as the SSID, an identifier to identify the specific access point
- Network Key: also referred to as an encryption key, WEP key or WPA/WPA2 passphrase, Per-Shared key. A password required to access the wireless network

If you do not know your Access Point/Network Name or your Network Key, use the following links for information on using our Canon PIXMA Wireless Setup Assistant.

- [Windows Users Click Here](#)
- [Mac Users Click Here](#)

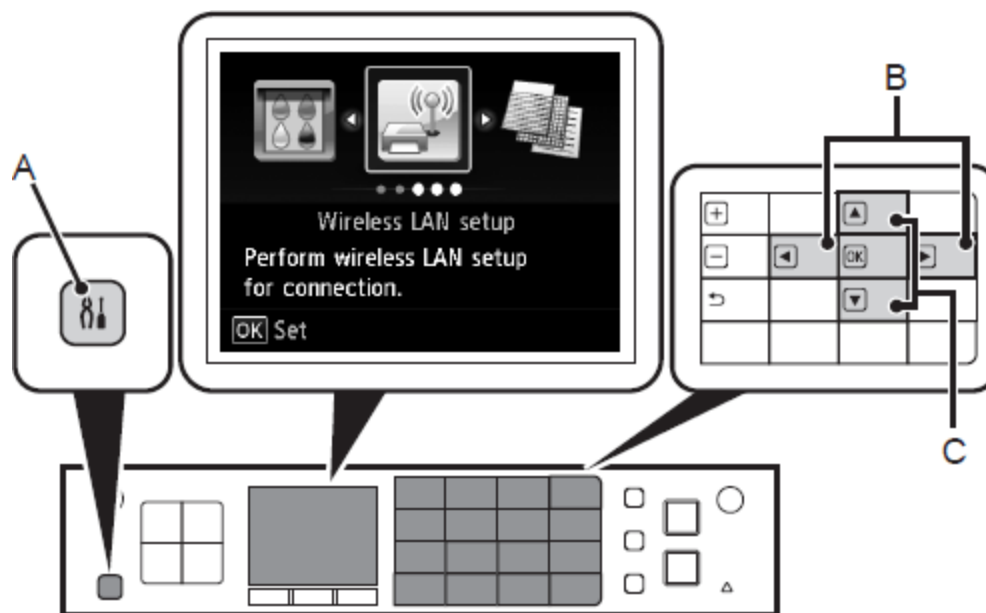
Adding Your Multifunction to Your Network

Step One

Press the **Setup** button (A)

Step Two

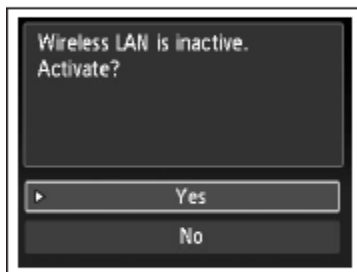
Use the ◀ or ▶ button (B) to select **Wireless LAN setup**, then press the **OK** button



Step Three

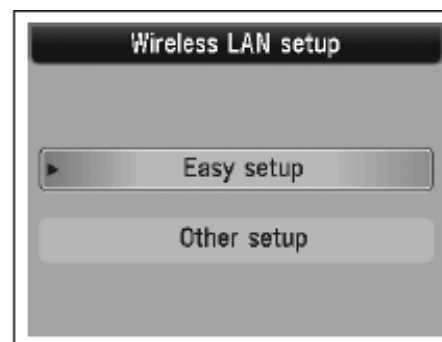
Select **Yes**, then press the **OK** button.

When wireless connection is enabled, the Wi-Fi lamp (D) lights blue.



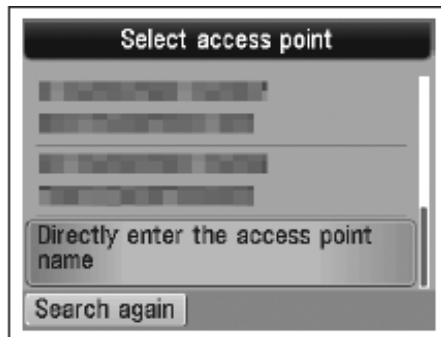
Step Four

Select **Easy setup**, and then press the **OK** button.



Step Five

Select the access point name, then press the **OK** button.



NOTE: If you are living in an apartment, nearby access points in use may be detected.

Step Six

Make sure that one of the screens, below, is displayed, then press the **OK button**.

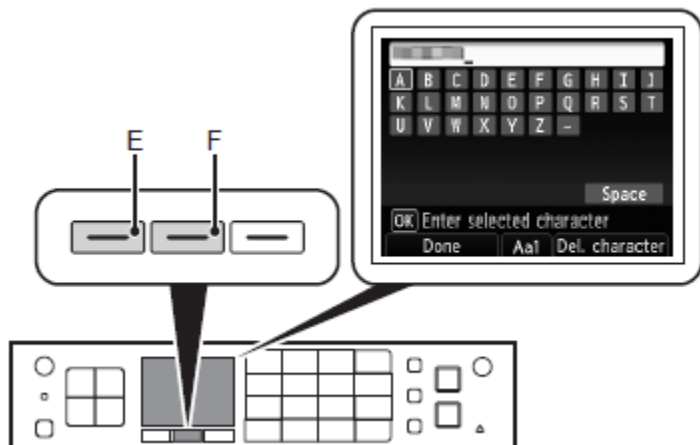
If the following screen is not displayed, go to step 9



Step Seven

Enter the network key you wrote down, then press the left **FUNCTION** button (E).

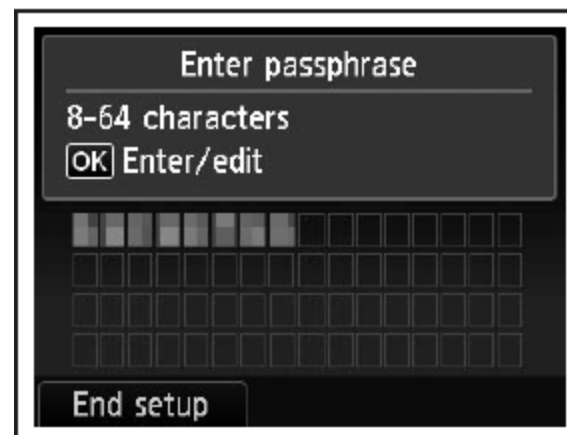
Press the center **FUNCTION** button (F) to switch character entry modes.



Network key entry is case-sensitive. Be sure to enter upper and lower case letters correctly.

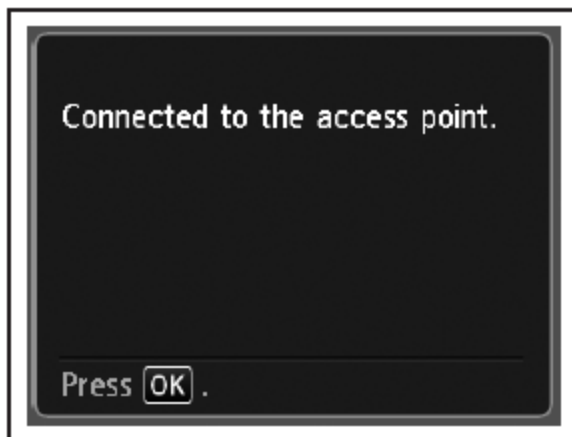
Step Eight

Make sure that the network key is correct, then press the left **FUNCTION** button. (**below End setup**)



Step Nine

When the screen below appears, press the **OK button**.



Your MX882 is now connected to your network

If **Failed to connect to the access point.** appears, press the **OK button**, make sure that the network key is correct, then enter it again. If a connection still cannot be established, refer to the printed manual: **Network Setup Troubleshooting**.