

Getting Your Multifunction Back On Your Network After A Router Or Network Change

**PIXMA MG8220
Windows and Mac OS**

If any of the following situations exist

- You have replaced your Router or Access Point
- You want to use a different wireless network
- Router settings have been changed.

Please complete the following steps to apply the new configuration settings to your multifunction.

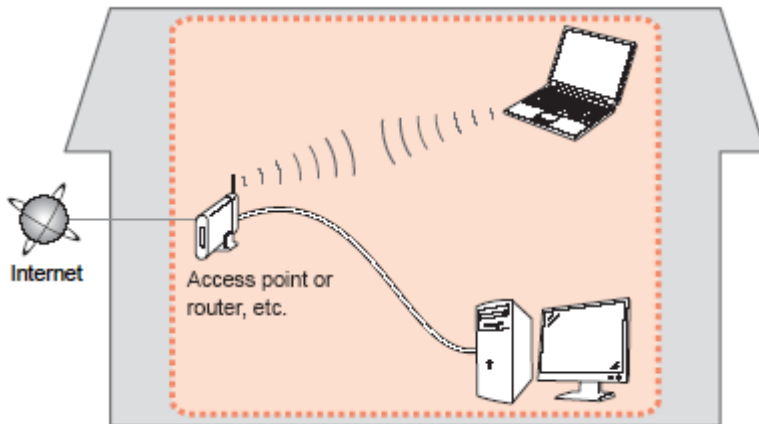
Preparing to Connect My Multifunction To My Network

[<< Previous](#)

[Next >>](#)

Network Requirements

Before connecting the machine to the network, make sure that configuration of the computer and access point or router is complete, and that the computer is connected to the network.



Wireless Connection

Before connecting the machine to the network, the computer needs to be connected to the network. Make sure that configuration of the computer and access point or router is complete.

Connect the PIXMA MG8220 to Your Wireless Network

To re-establish communication on the network after changing the router / Access Point or when connecting to a different network, the settings on the Multifunction need to be changed

Simply insert the Setup CD-ROM that came with your printer into your CD-ROM drive and proceed through the easy to follow instructions On Windows computers only, select the Start Setup Again option

Change Connection Method

Change the connection method between the printer and computer from USB to LAN or from LAN to USB.

Add Software

Select software to add or reinstall it.

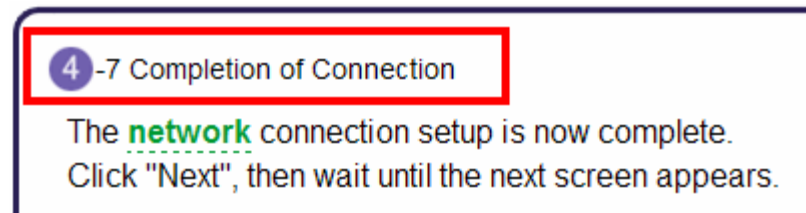
Start Setup Again

Start again from the initial installation to connection.

On the Connection Method Selection screen, be sure to select **Wireless Connection**



Follow the instructions until the Completion of Connection screen. It is not necessary to re-install the software. Click Next on the Completion of Connection screen, then click Back, then Exit. Setup is now finished



If you can't find your CD-ROM, you may download the MG8200 series Mini Master Setup, which includes the same step-by-step installation as the CD-ROM, by following the instructions below:

1. [Click here to access the MG8220 Drivers & Software page.](#)
2. Select the operating system of your computer (see example below).
3. Expand the 'Drivers' section by clicking the red triangle.
4. To the right of the 'MG8200 series Mini Master Setup' entry, click the icon under 'Download.'
5. After reading the license agreement, click 'I Agree – Begin Download' and save the file to your computer.
6. Once the download is complete, double-click the file from its download location to begin the installation.

Drivers & Software

Choose an operating system from the drop down menu then select the appropriate driver or software from the list below

Choose Operating System: Windows 7

Select Language: English Spanish All

Hide All

Drivers

| File Description | Post Date | Size | Download |
|---|-----------|---------|----------|
| MG8200 series Mini Master Setup (Windows 7) ... File Name: mast-win-mg8200-1_0-ucd.exe | 08/21/11 | 24.58MB | |

7. Follow the same instructions as when using the Setup CD-ROM. See the [previous page](#)