

Getting Your Multifunction Back On Your Network After A Router Or Network Change

PIXMA MG8120
Windows & Mac OS

If any of the following situations exist

- You have replaced your Router or Access Point
- You want to use a different wireless network
- Router settings have been changed.

Please complete the following steps to apply the new configuration settings to your multifunction.

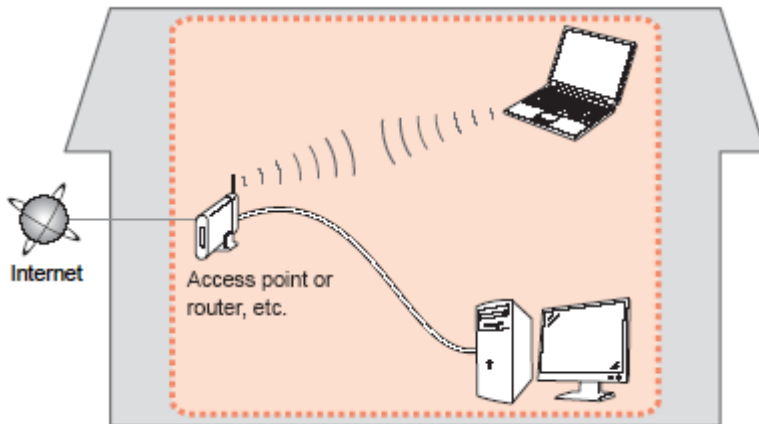
Preparing to Connect My Multifunction To My Network

[<< Previous](#)

[Next >>](#)

Network Requirements

Before connecting the machine to the network, make sure that configuration of the computer and access point or router is complete, and that the computer is connected to the network.



Preparing to Connect My Multifunction To My Network

[<< Previous](#)

[Next >>](#)



An "Ad-hoc connection," which establishes a direct connection to the computer over a wireless connection without using an access point, is not supported.

Be sure to prepare an access point.

Notes on Network Connection

- The configuration, router functions, setup procedures and security settings of the network device vary depending on your system environment. For details, refer to your device's instruction manual or contact its manufacturer.
- In an office setup, consult your network administrator
- If you connect to a network that is not protected with security measures, there is a risk of disclosing data such as your personal information to a third party.
- If an error message appears or if you have trouble with the network connection, refer to the printed manual: Network Setup Troubleshooting.
- Place the machine and computer on the same network segment.

Preparing to Connect My Multifunction To My Network

[<< Previous](#)

[Next >>](#)

Before you continue, please gather the following information which will be required to connect your multifunction to your network. This information will be entered on the machine's operation panel.

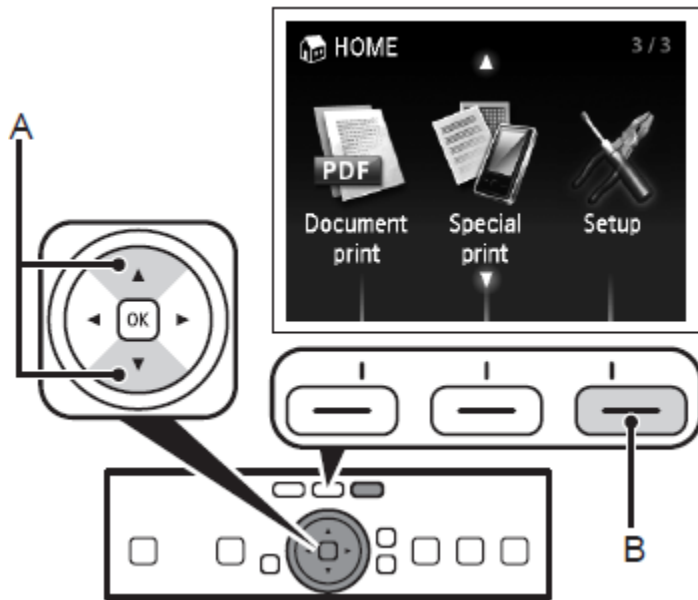
- Access Point /Network Name: also referred to as the SSID, an identifier to identify the specific access point
- Network Key: also referred to as an encryption key, WEP key or WPA/WPA2 passphrase, Per-Shared key. A password required to access the wireless network

If you do not know your Access Point/Network Name or your Network Key, use the following links for information on using our Canon PIXMA Wireless Setup Assistant.

- [Windows Users Click Here](#)
- [Mac Users Click Here](#)

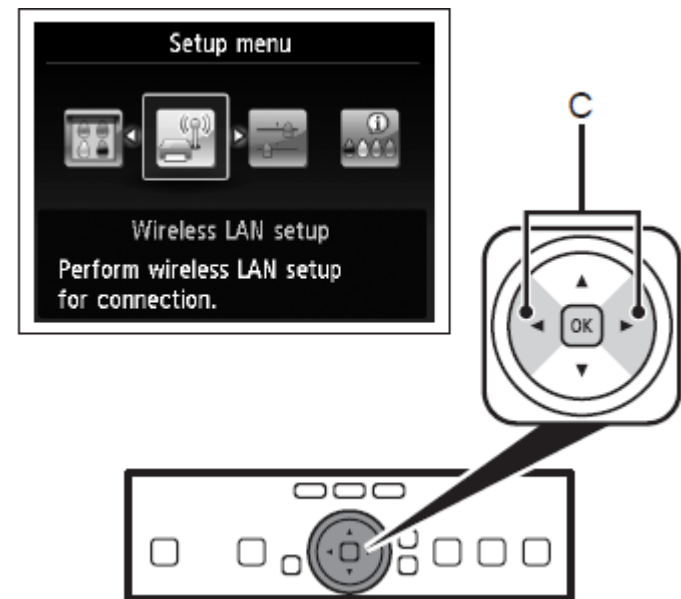
Step 1

Use the ↑ or ↓ button (A) to display **Setup**, then touch the right FUNCTION button (B).



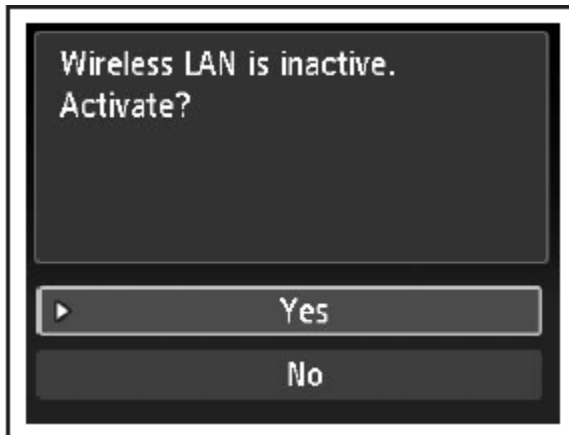
Step 2

Use the ← or → button (C) to select **Wireless LAN setup**, then touch the **OK** button.



Step 3

Select **Yes**, then touch the **OK** button.

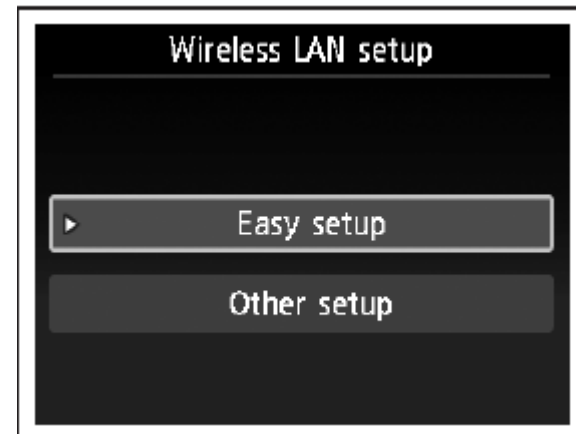


When wireless connection is enabled, the Wi-Fi lamp lights blue.



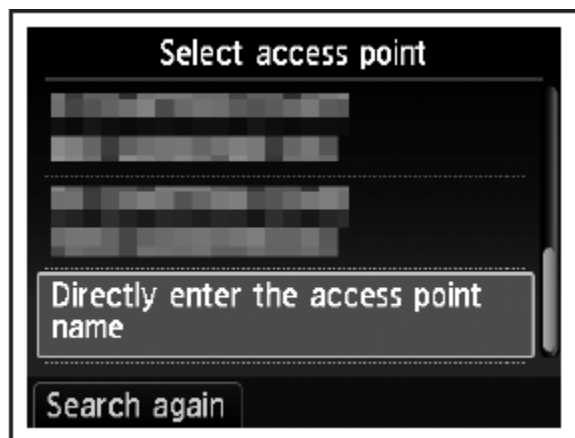
Step 4

Select **Easy setup**, then touch the **OK** button.



Step 5

Select the access point name you, then touch the **OK** button.

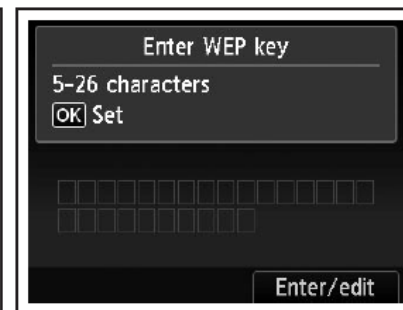
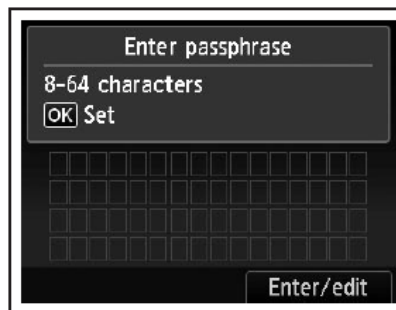


Note:

- Nearby access points may be detected.
- Access point names with 2-byte characters are not displayed properly, however, they can be selected.

Step 6

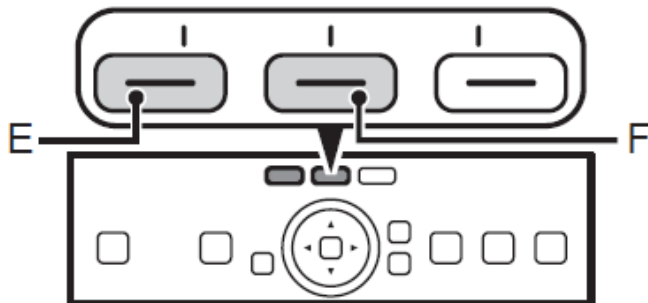
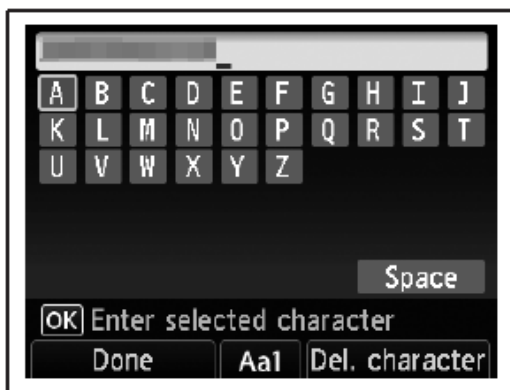
Make sure that one of the below screens is displayed, then touch the right FUNCTION button.



If neither is displayed, go to Step 9.

Step 7

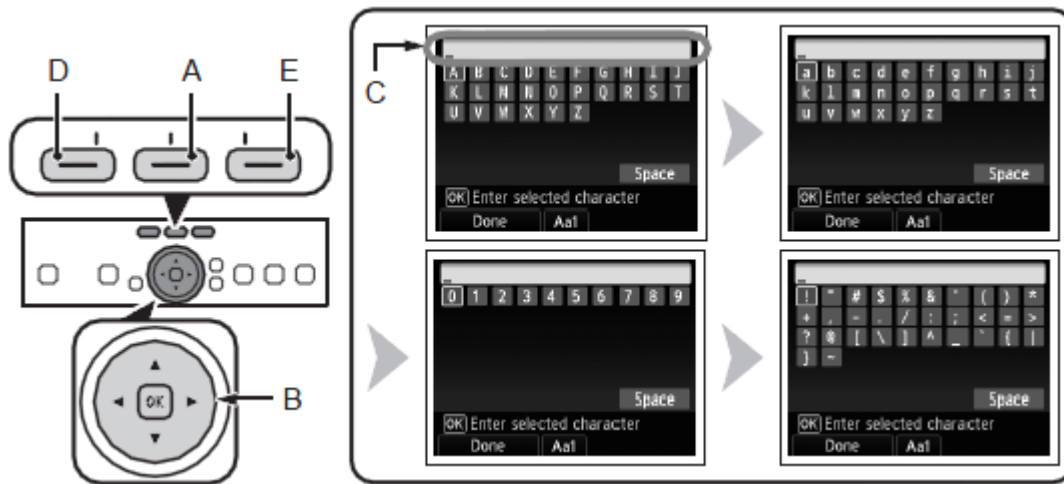
Enter the network key, then touch the left FUNCTION button (E).



1. Touch the center FUNCTION button (F) to switch character entry modes.
2. Enter upper and lower case letters of the alphabet correctly.

Step 7 (continued) Character Entry

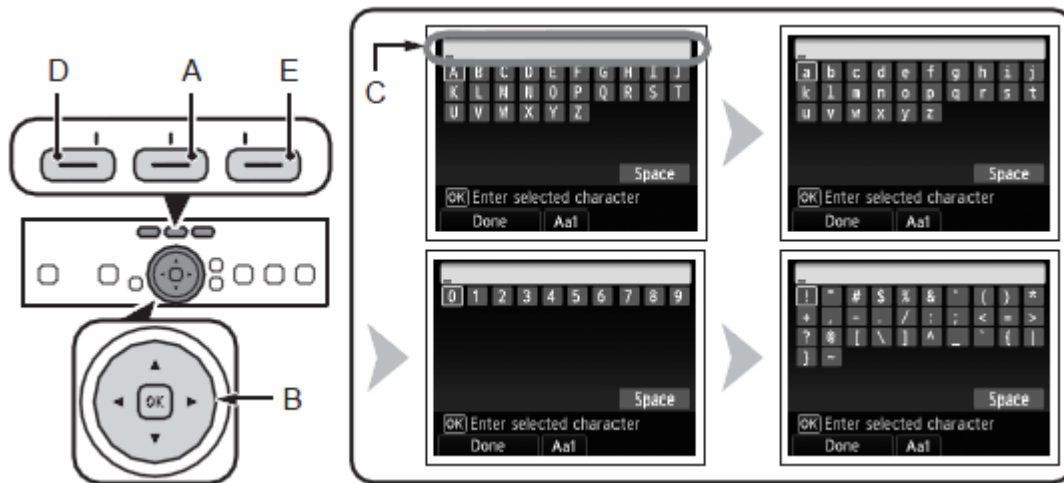
This machine allows you to enter characters when an on-screen keyboard is displayed. Follow the procedure below.



1. When the on-screen keyboard is displayed, touch the center FUNCTION button (A) to switch to a keyboard having the characters you want to use.

Four character sets are available: Upper-case alphabets, lower-case alphabets, numbers, and symbols. Each time you touch the center FUNCTION button, the on-screen keyboard is switched among them.

Step 7 (continued) Character Entry

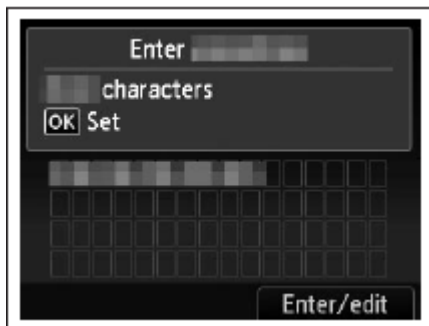


- To insert a space, select **Space** on the on-screen keyboard and touch the **OK** button.
- To insert characters, select the section (C) of the screen using the \uparrow or \downarrow button, move the cursor to the character on the right of the target position using the \leftarrow or \rightarrow button, then enter characters.
- To delete a character, select the section (C) of the screen using the \uparrow or \downarrow button, move the cursor to the character on the right of the target position using the \leftarrow or \rightarrow button, then touch the right FUNCTION button (E).

2. Select a character on the on-screen keyboard using the $\uparrow\downarrow\leftarrow\rightarrow$ buttons (B) then touch the OK button to enter it. Entered characters are displayed on the upper section (C) of the on-screen keyboard.
3. Repeat (1) and (2) to enter more characters.
4. After you enter all characters you need, touch the left FUNCTION button (D).

Step 8

Make sure that the network key is correct, then touch the **OK** button.



Step 9

When the screen below appears, touch the **OK** button.



Your MG8120 is now connected to your network

Note:

- If Failed to connect to the access point. appears, touch the **OK** button, make sure that the network key is correct, then enter it again. If a connection still cannot be established, refer to the printed manual: *Network Setup Troubleshooting*.