



**Getting Your Multifunction
Back On the Network
After A Router Or Network Change
PIXMA MG5620**

Windows OS

Getting Your Multifunction Back On the Network After A Router Or Network Change

PIXMA MG5620

Windows OS

Preparing to Connect My Multifunction to My Network	3
Network Requirements	3
Notes on Wireless Connection	4
Setting up the Network Connection	5

Important

If any of the following situations exist

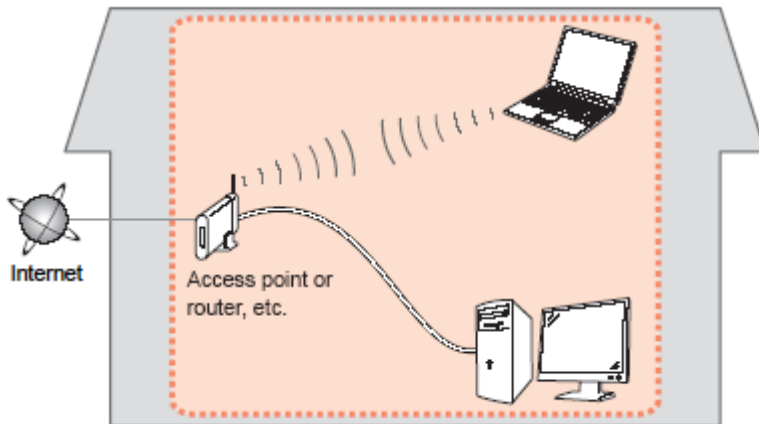
- You have replaced your Router or Access Point
- You want to use a different wireless network
- Router settings have been changed.

Please complete the following steps to apply the new configuration settings to your multifunction.

Preparing to Connect the Multifunction To the Network

Network Requirements

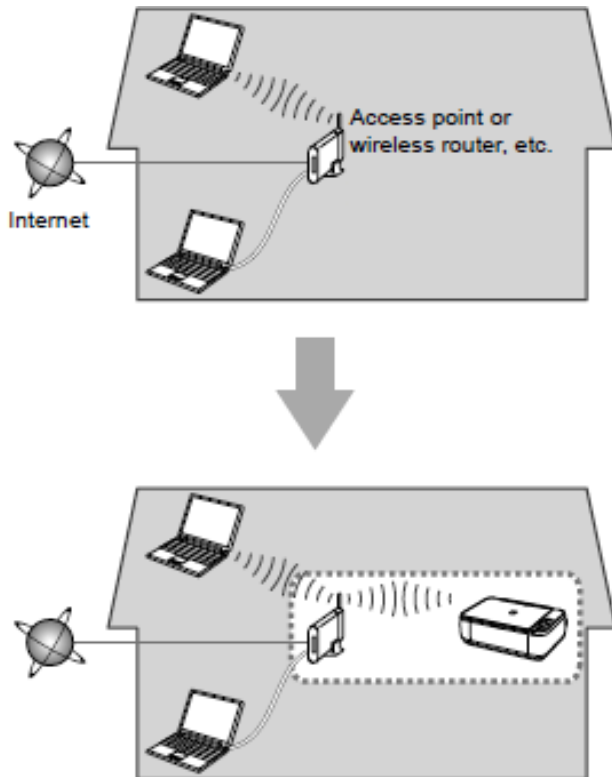
Before connecting the machine to the network, make sure that configuration of the computer and access point or router is complete, and that the computer is connected to the network.



Wireless Connection

Before connecting the machine to the network, the computer needs to be connected to the network. Make sure that configuration of the computer and access point or router is complete.

Preparing to Connect the Multifunction To the Network



Notes on Network Connection

- The configuration, router functions, setup procedures and security settings of the network device vary depending on your system environment. For details, refer to your device's instruction manual or contact its manufacturer.
- In an office setup, consult your network administrator
- If you connect to a network that is not protected with security measures, there is a risk of disclosing data such as your personal information to a third party.
- Place the machine and computer on the same network segment.

Setting Up the Network Connection

Software Installation

To use the machine by connecting it to a computer, software including the drivers needs to be copied (installed) to the computer's hard disk. Installation time varies depending on the computer environment or the number of application software to be installed.

IMPORTANT

- Log on as the administrator (or a member of the Administrators group).
- Quit all running applications before installation.
- Do not switch users during the installation process.
- Internet connection may be required during the installation. Connection fees may apply. Consult the internet service provider.
- It may be necessary to restart your computer during the installation process. Follow the on-screen instructions and do not remove the Setup CD-ROM during restarting. The installation resumes once your computer has restarted.
- If the firewall function of your security software is turned on, a warning message may appear that Canon software is attempting to access the network. If such a warning message appears, set the security software to always allow access.

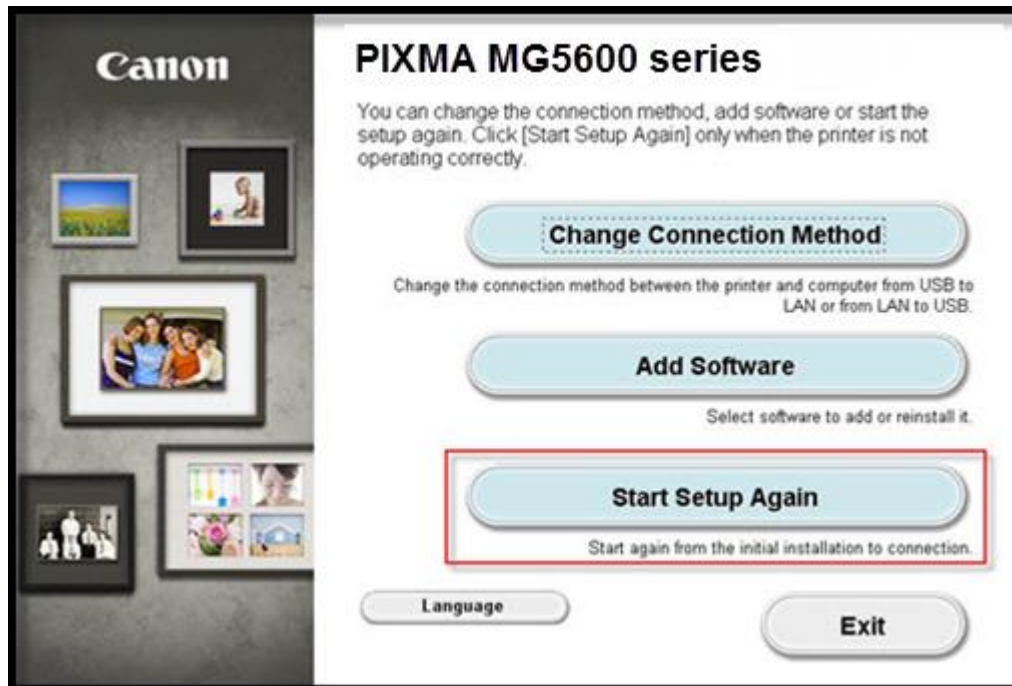
Setting Up the Network Connection

Installing the PIXMA MG5620 on Your Wireless Network

When you reinstall your printer on your network because of a router or network change, you follow the same procedure as for a first time install. A step-by-step walk through of the wireless setup is built in to the installation routine of the software that shipped with your PIXMA.

Insert the Setup CD-ROM * that came with your printer into your CD-ROM drive and proceed through the easy to follow instructions

If the following screen appears, click **Start Setup Again**



Setting Up the Network Connection

The setup program will start automatically. The setup instructions presented in this document describe the “**Cableless Setup**” method which does not require the need to know the Access Point / SSID (network name), or network password and does not require the printer to be temporarily connected to the computer with a USB cable.

The **Cableless Setup** is not supported in Windows XP. For Windows XP Users: Use the “[Standard Setup](#)” method. You will need to know your Access Point name and Network Password when using the Standard setup.

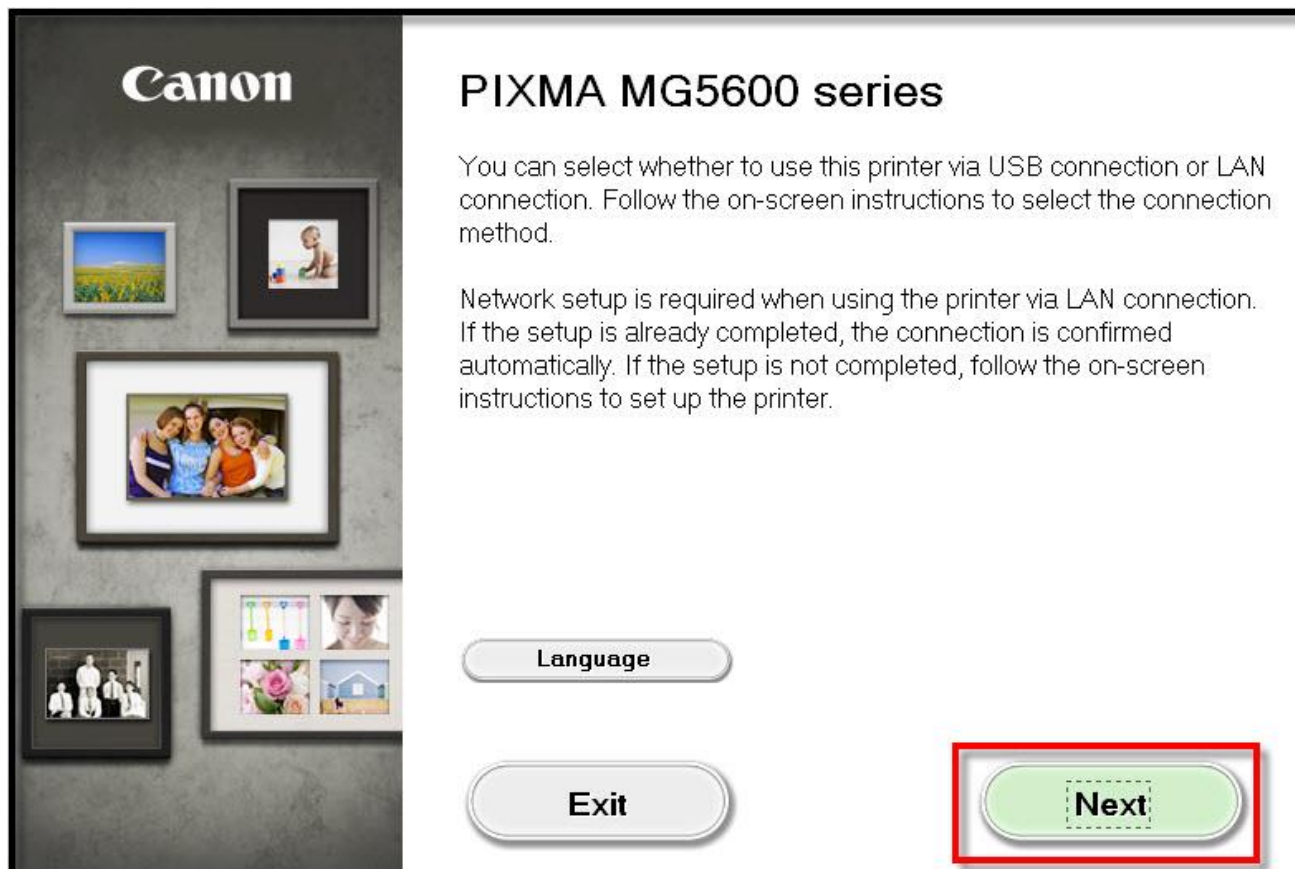
*If you don't have or cannot use the Setup CD-ROM, follow the steps below to start the setup.

- [Download the software](#) (click the link to download)
- Double-click the downloaded .exe file (Win-mg5600-1_0-ucd.exe)

If the **User Account Control** dialog box appears during the setup, click **Yes** or **Continue**.

Setting Up the Network Connection


Click **Next** on the initial screen.




Setting Up the Network Connection

On the following screen, select **Wireless LAN Connection**, then click **Next**.

Select the printer connection method.

 ☒ Wireless LAN Connection


 ☐ USB Connection

[Back](#) [Next](#)


Setting Up the Network Connection

On the following screen, select **Access Point Connection**, then click **Next**.

Select the wireless LAN connection method.



☒ **Access Point Connection (recommended)**
Connect the computer and the printer via wireless LAN router.



☐ **Direct Connection**
Directly connect the computer and the printer.

To switch between Access Point Connection and Direct Connection or for more details on the connection method, click [Instructions].

[Instructions](#)[Back](#)[Next](#)

Setting Up the Network Connection

Continue following on-screen instructions. On the **Printers on Network List** screen, check the **Setting printer could not be found on the list** checkbox and click **Next**.

Printers on Network List

Serial Number	MAC Address	IP Address

☒ Setting printer could not be found on the list

Update

1. To set a printer on the network, select one from the above printers list, and then click [Next].
Serial number can be found on the back of the printer or the Letter of Guarantee.

2. If the setting printer could not be found on the above list, turn on the printer and click [Update].

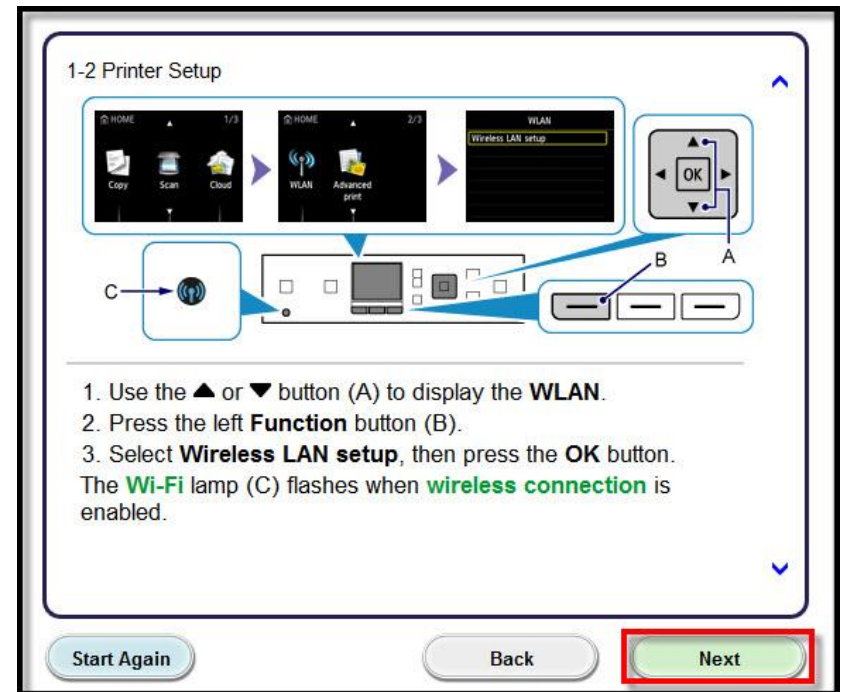
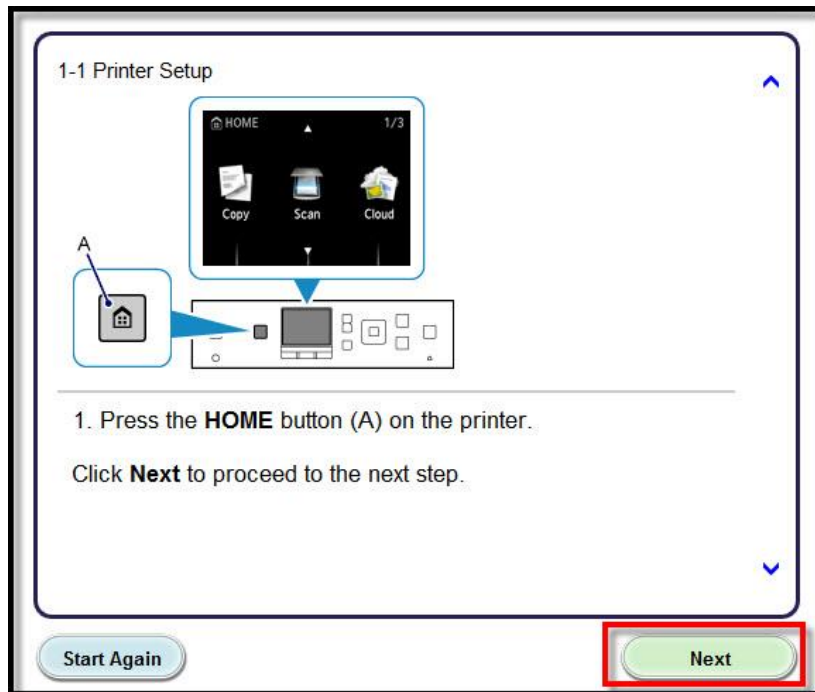
3. If the printer could not still be found, select [Setting printer could not be found on the list], and then click [Next].

Back

Next

Setting Up the Network Connection

Follow the instructions on the **Printer Setup** screens (1-1 and 1-2) to select **Wireless LAN setup**.



Setting Up the Network Connection

Continue to follow on-screen instructions.

Select **Other Methods** on the **Setup Procedure Selection** screen (2-1).

***Note:** If your printer's display looks like the screen shown above **Push Button Method** in the **Setup Procedure Selection** screen (2-1), push the **Stop** button on the printer before proceeding to the next instruction

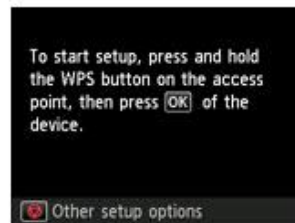
2-1 Setup Procedure Selection

The printer will automatically search for compatible **access points**.

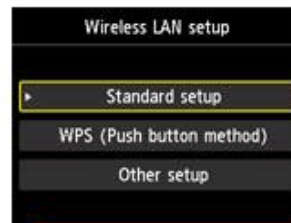
Click the method below that matches the screen displayed on your printer.

* If the Push Button Method screen is displayed on the printer
When you are unsure if your access point or **router** supports this technology, press the **Stop** button.

When the printer screen changes from left to right, click [here](#)
Proceed to the screen for Standard setup.



[Push Button Method](#)



[Other Methods](#)

Setting Up the Network Connection

Continue to follow on-screen instructions.

Select **Other setup** on the **Setup Procedure Selection** screen (2-2).

2-2 Setup Procedure Selection

Select the most suitable connection method from the following.

Connect to **Access Point** by entering the Network Password

Standard setup

When using **WEP key number** 2, 3 or 4, click **Other setup**, then select **Advanced setup**.

Connect to **WPS**-compatible Access Point

WPS

Connect Using Other Methods

Other setup

Setting Up the Network Connection

Select **Cableless setup** on the **Setup Procedure Selection** screen (2-3).

2-3 Setup Procedure Selection

Connecting to the **Network** by
Entering the **Access Point's** Settings
Directly on the Printer

Advanced setup

When using **WEP key number** 2, 3 or 4, select **Advanced setup**.
Advanced setup method is intended for experienced users. If you are unfamiliar with
Network functions, please click **Back** and select **Standard setup**.

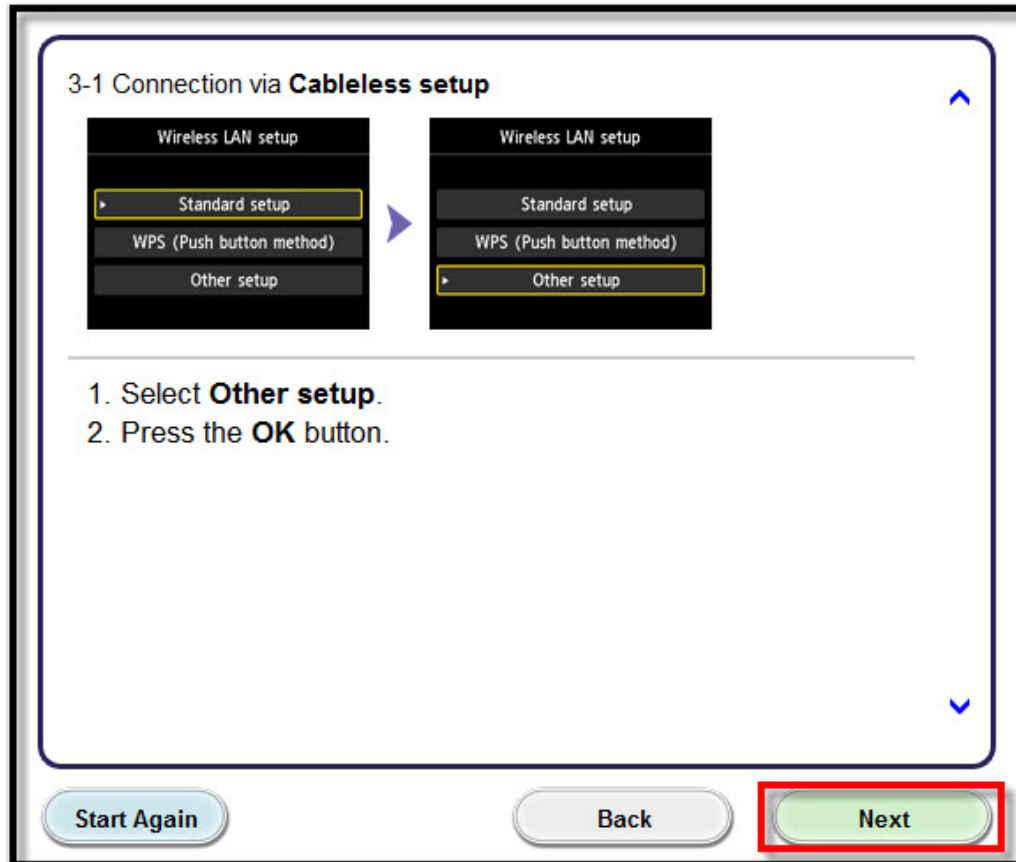
Setting the Access Point Information
to the Printer Directly from Computer,
without Operating the Access Point

Cableless setup

Cableless setup may take some time. Internet connection may become temporarily
unavailable during setup.
Cableless setup is not available on Windows XP. Perform setup with another connection
method.

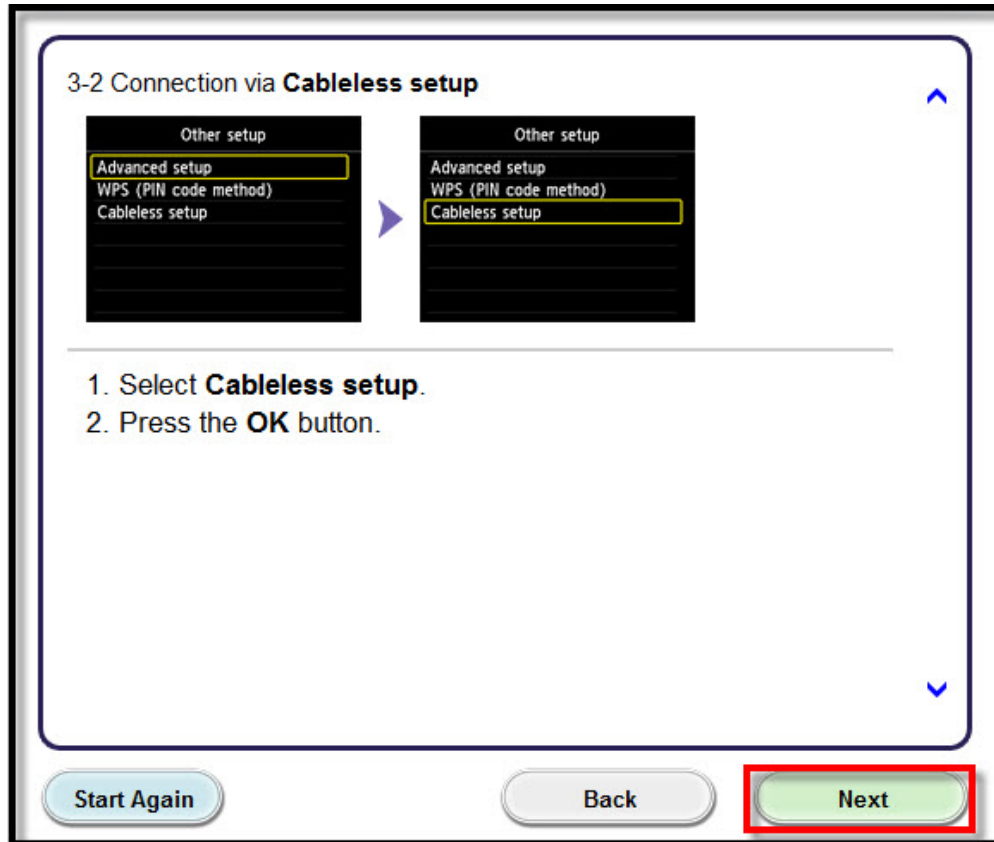
Setting Up the Network Connection

Select **Other setup** and press the **OK button** on your printer. Click **Next** on the **Connection via Cableless setup** screen. (3-1).



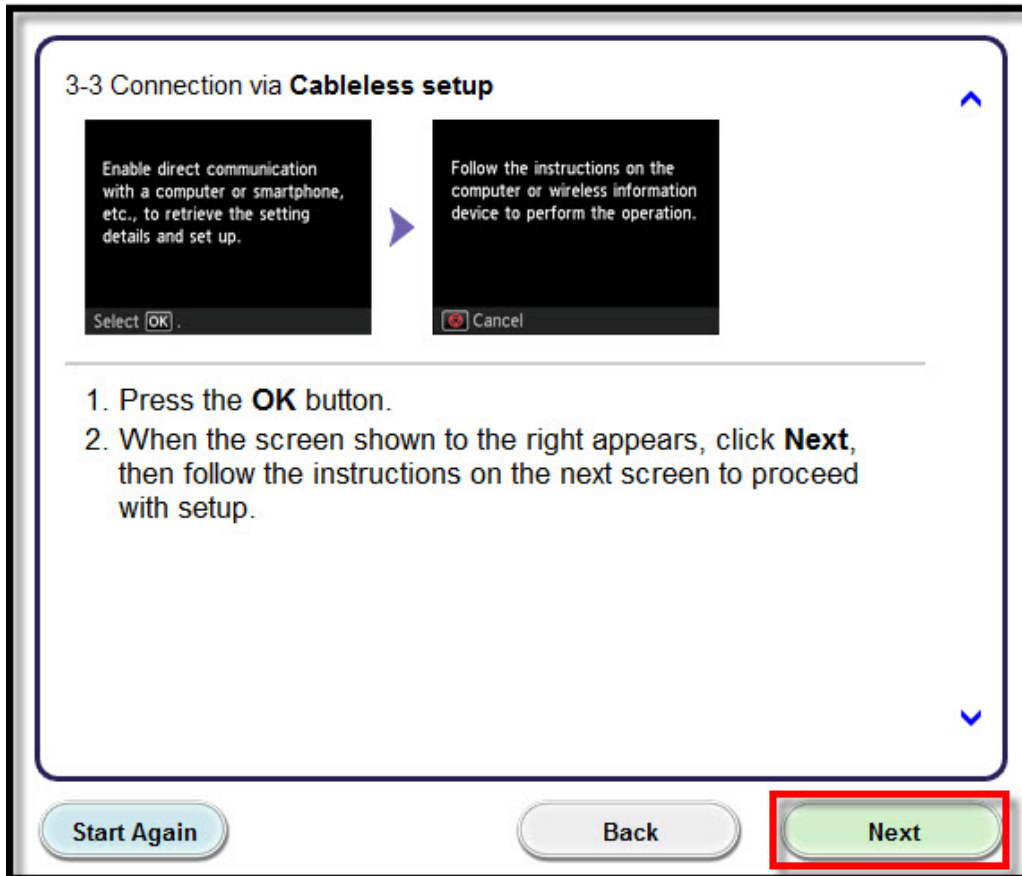
Setting Up the Network Connection

Select **Cableless setup** and press the **OK** button on your printer. Click **Next** on the **Connection via Cableless setup** screen. (3-2).



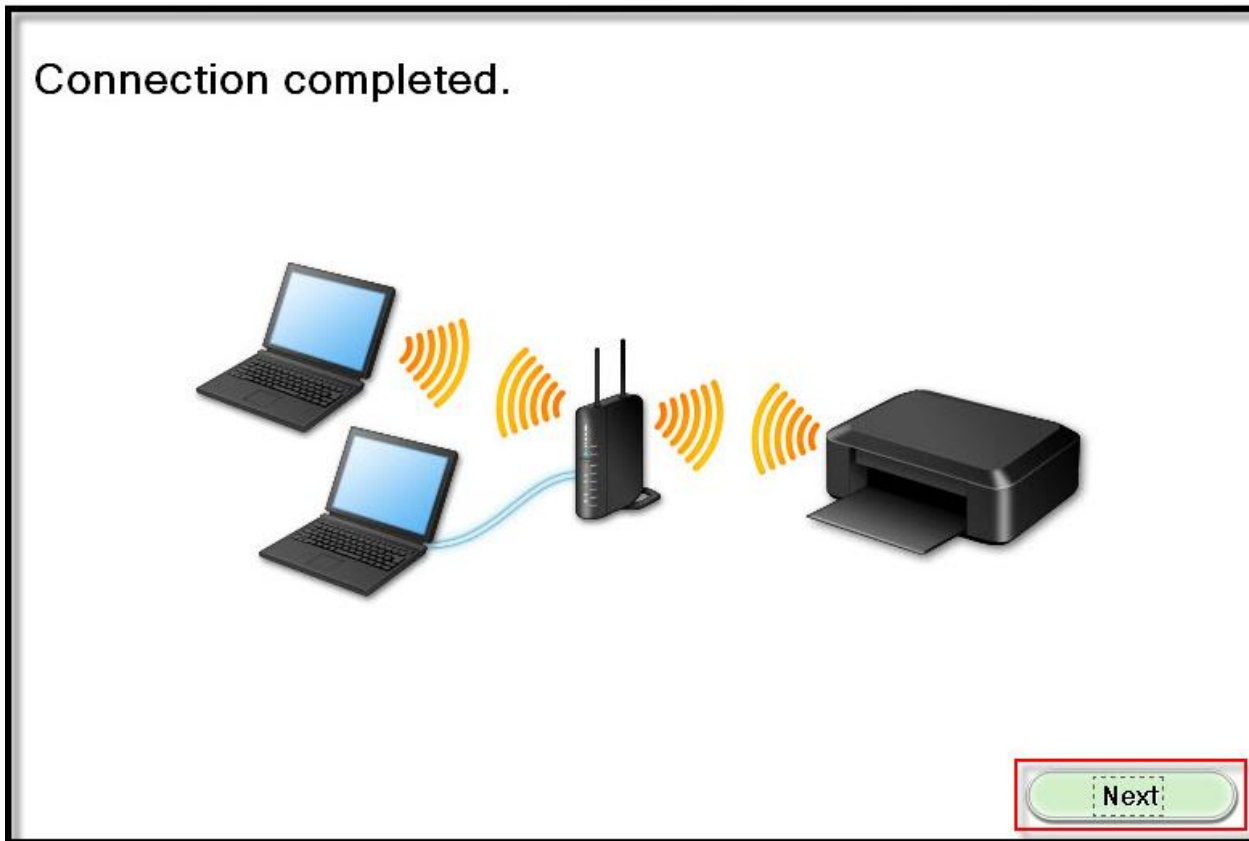
Setting Up the Network Connection

Press the **OK** button on your printer. When “**Follow the instructions on the computer or smartphone....**” appears on the printer’s screen, click **Next** on the **Connection via Cableless setup** screen. (3-3).



Setting Up the Network Connection

Click **Next** on the **Connection completed** screen.



Installing the Drivers & Software

Continue following on-screen instructions. On the **Software Installation List**, select *software to install and click **Next**.

***MP Drivers** is required and cannot be deselected. We recommend installing **My Image Garden** and **Quick Menu** to take full advantage of the printer's features. It is not necessary to reinstall these additional applications if they were installed previously.

Software Installation List

The selected software will be installed. Make sure that the software you want to install is selected, and then click [Next].

<input checked="" type="checkbox"/> MP Drivers	245 MB	Drive C: 58570 MB free space
<input checked="" type="checkbox"/> User's Manual	10 MB	
<input checked="" type="checkbox"/> My Printer	14 MB	Total used space: 1124 MB
<input checked="" type="checkbox"/> My Image Garden	705 MB	
<input checked="" type="checkbox"/> Quick Menu	40 MB	
<input checked="" type="checkbox"/> Easy-WebPrint EX	110 MB	
<input type="checkbox"/> XPS Driver	130 MB	

Select All
Clear All

Back

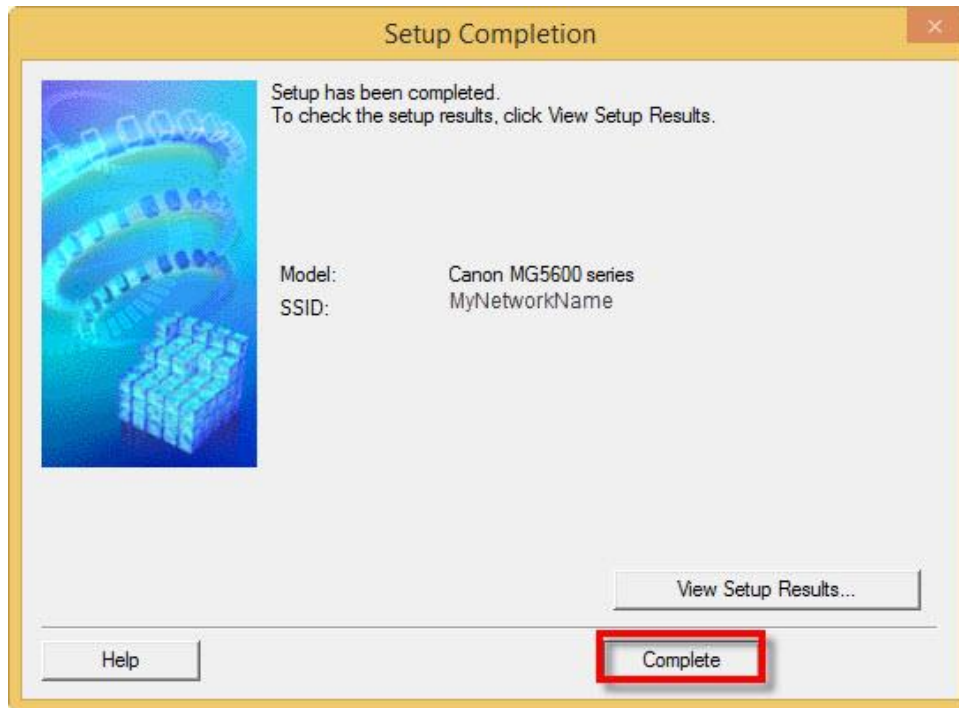
Estimated installation time: 10 to 15 minutes

Next

Installing the Drivers & Software

Continue following on-screen instructions.

When the **Setup Completion** dialog box appears, click **Complete**.



At this point, setup of the printer and network is complete. Continue to follow any remaining on-screen instructions to finish and exit the setup program.