



# **Getting Your Multifunction Back on the Network After a Router or Network Change**

**PIXMA iP110**

**Windows OS**

## Important

If any of the following situations exist

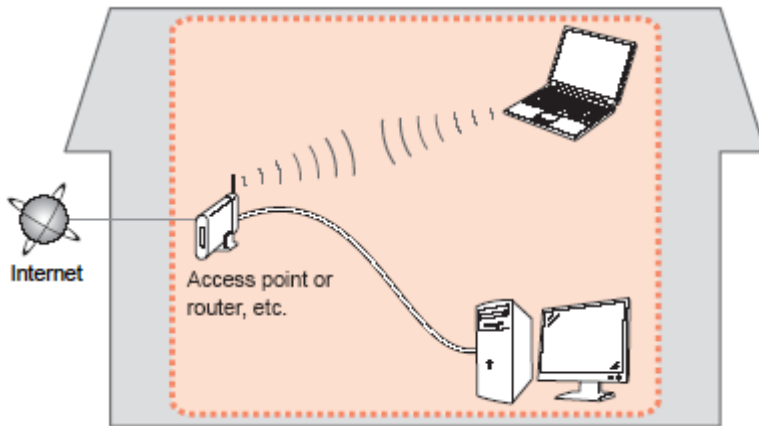
- You have replaced your Router or Access Point
- You want to use a different wireless network
- Router settings have been changed.

Please complete the following steps to apply the new configuration settings to your multifunction.

# Preparing to Connect My Multifunction To My Network

## Network Requirements

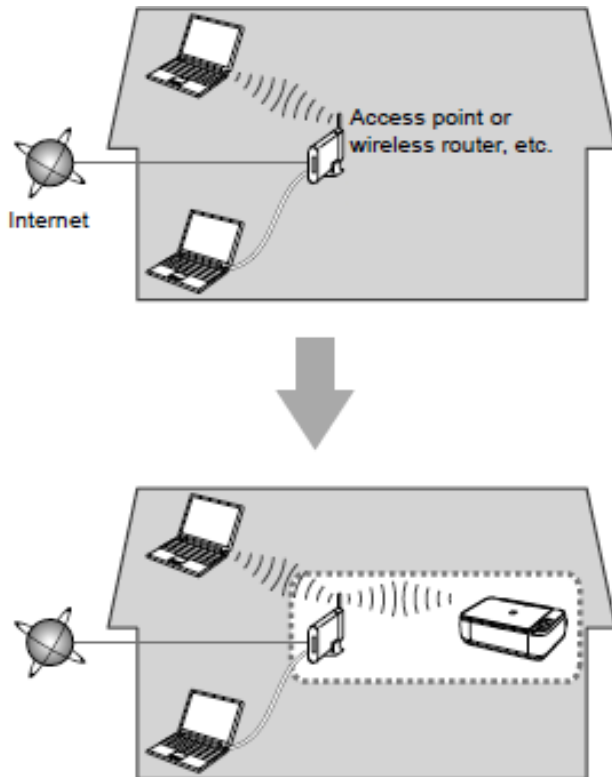
Before connecting the machine to the network, make sure that configuration of the computer and access point or router is complete, and that the computer is connected to the network.



## Wireless Connection

Before connecting the machine to the network, the computer needs to be connected to the network. Make sure that configuration of the computer and access point or router is complete.

# Preparing to Connect My Multifunction To the Network



## Notes on Network Connection

- The configuration, router functions, setup procedures and security settings of the network device vary depending on your system environment. For details, refer to your device's instruction manual or contact its manufacturer.
- In an office setup, consult your network administrator
- If you connect to a network that is not protected with security measures, there is a risk of disclosing data such as your personal information to a third party.
- Place the machine and computer on the same network segment.

# Installing the Drivers & Software

## Software Installation

To use the machine by connecting it to a computer, software including the drivers needs to be copied (installed) to the computer's hard disk. Installation time varies depending on the computer environment or the number of application software to be installed.

### **IMPORTANT**

- Log on as the administrator (or a member of the Administrators group).
- Quit all running applications before installation.
- Do not switch users during the installation process.
- Internet connection may be required during the installation. Connection fees may apply. Consult the internet service provider.
- If the firewall function of your security software is turned on, a warning message may appear that Canon software is attempting to access the network. If such a warning message appears, set the security software to always allow access.

# Installing the Drivers & Software

When you reinstall your printer on your network because of a router or network change, you follow the same procedure as for a first time install. A step-by-step walk through of the wireless setup is built into the installation routine of the software for your PIXMA.

To begin the reinstall of your PIXMA iP110 to your wireless network, you must first download the software to your computer.

\*Insert the Setup CD-ROM into your computer. The setup program will start automatically.

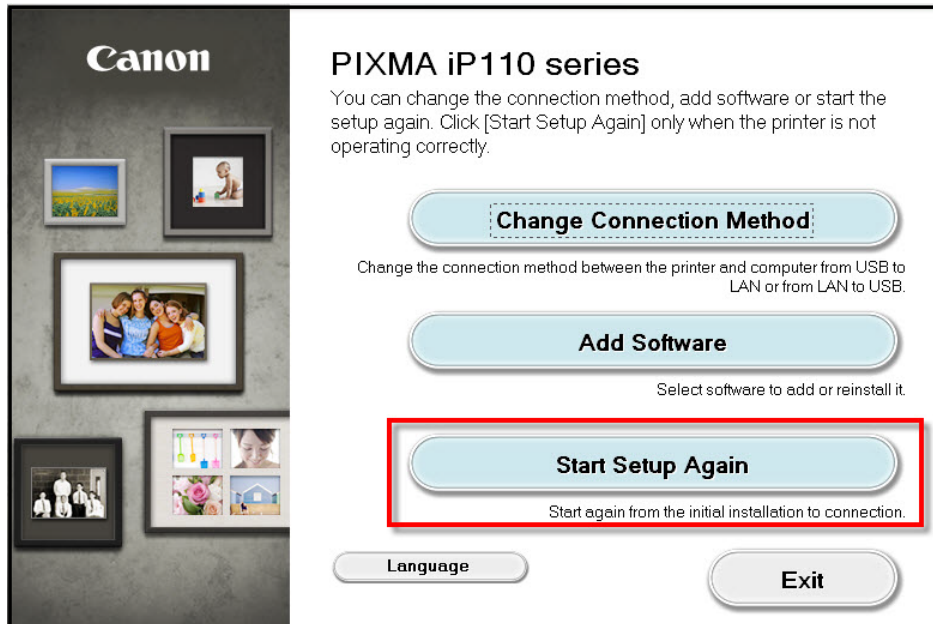
\*If you don't have or cannot use the Setup CD-ROM, follow the steps below to start the setup.

- [Download the software](#) (click the link to download)
- Double-click the downloaded .exe file.

After the file has downloaded successfully, double-click it to start the install procedure.

# Installing the Drivers & Software

If the following screen appears, click **Start Setup Again**.



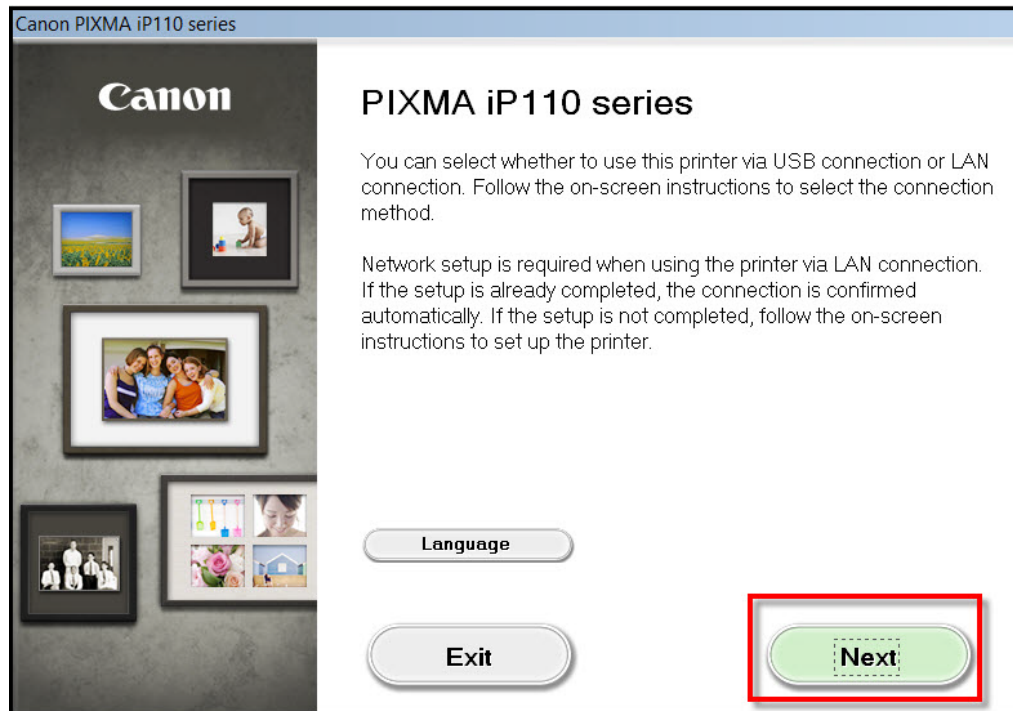
The setup instructions presented in this document describe the “**Cableless Setup**” method which does not require the need to know the SSID (network name), or network passphrase and does not require the printer to be temporarily connected to the computer with a USB cable.

The **Cableless Setup** is not supported in Windows XP. For Windows XP Users: Use the “ [Wireless Setup Using the USB Cable](#)” method , whereby a USB cable is temporarily connected between the printer and computer during setup.

If the **User Account Control** dialog box appears during the setup, click **Yes** or **Continue**.

# Installing the Drivers & Software

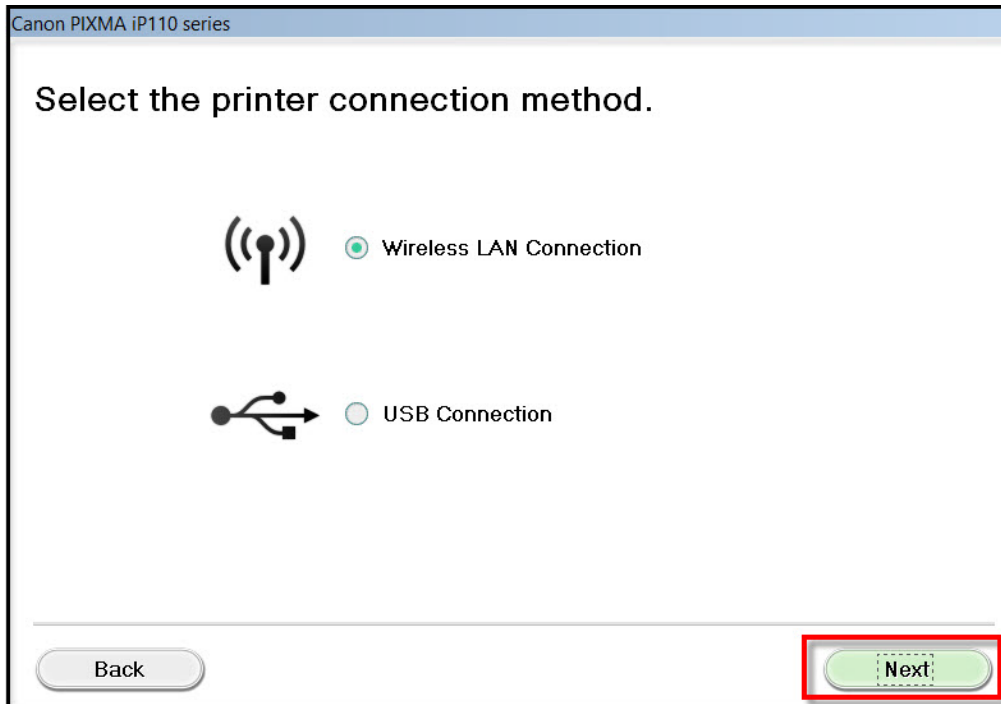
Click **Next** on the initial screen.





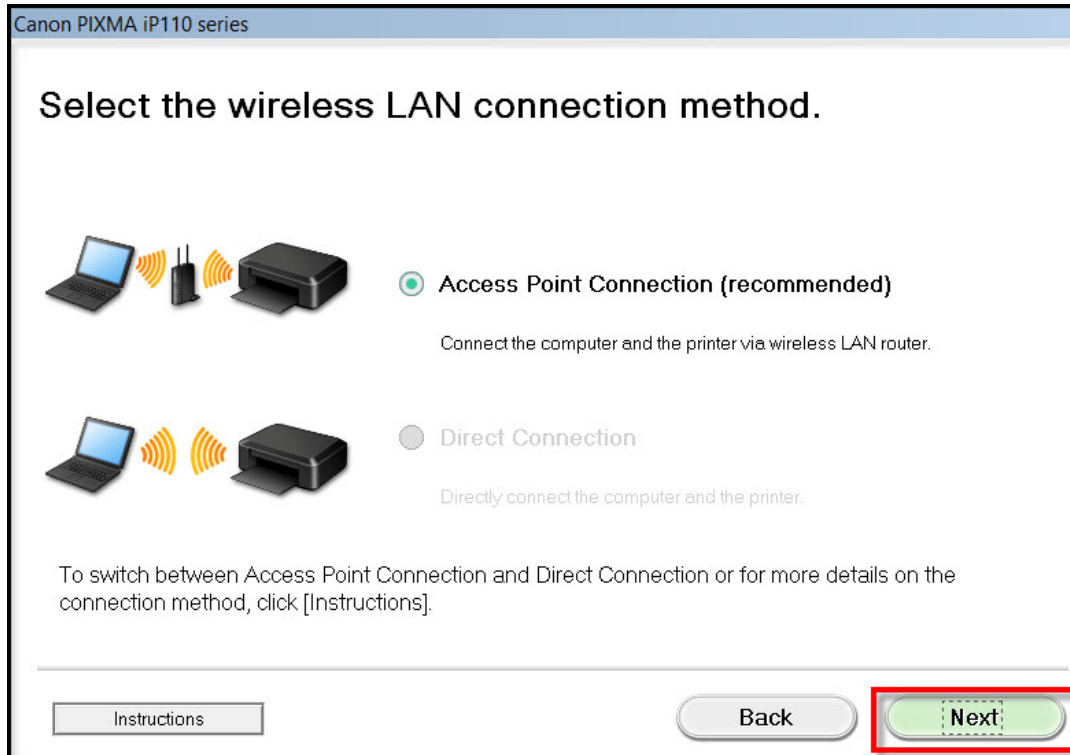
# Connecting to the Network

On the following screen, select **Wireless LAN Connection**, then click **Next**.



# Connecting to the Network

On the following screen, select **Access Point Connection**, then click **Next**.



# Connecting to the Network

Continue following on-screen instructions. On the **Printers on Network List** screen, check the **Setting printer could not be found on the list** checkbox and click **Next**.

Canon PIXMA iP110 series

## Printers on Network List

Serial Number	MAC Address	IP Address

☒ Setting printer could not be found on the list

Update

1. To set a printer on the network, select one from the above printers list, and then click [Next].  
Serial number can be found on the back of the printer or the Letter of Guarantee.  
2. If the setting printer could not be found on the above list, turn on the printer and click [Update].  
3. If the printer could not still be found, select [Setting printer could not be found on the list], and the click [Next].

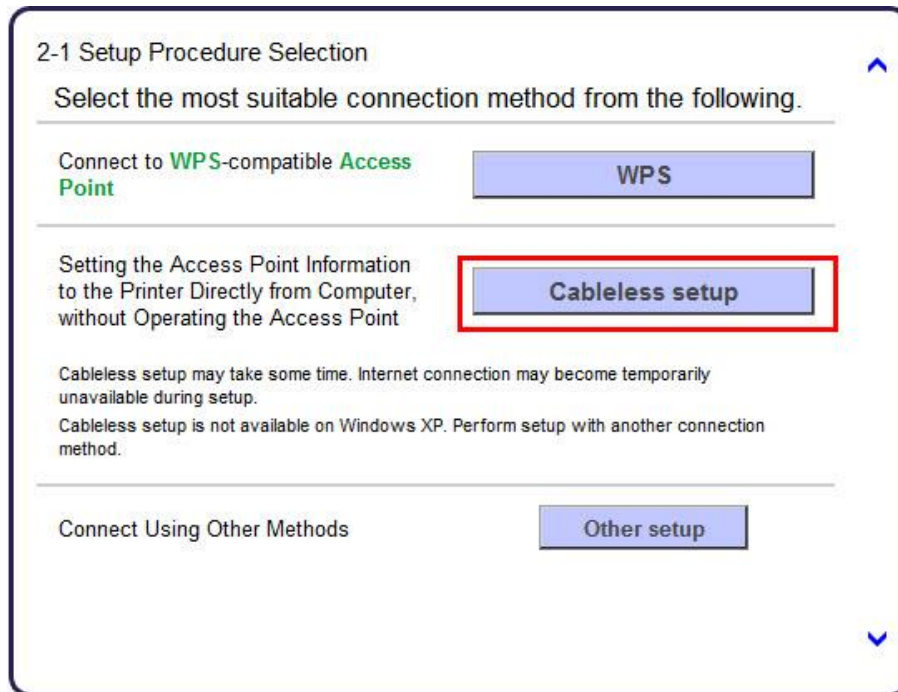
Back

Next

# Connecting to the Network

Continue to follow on-screen instructions.

Select **Cableless setup** on the **Setup Procedure Selection** screen (2-1).

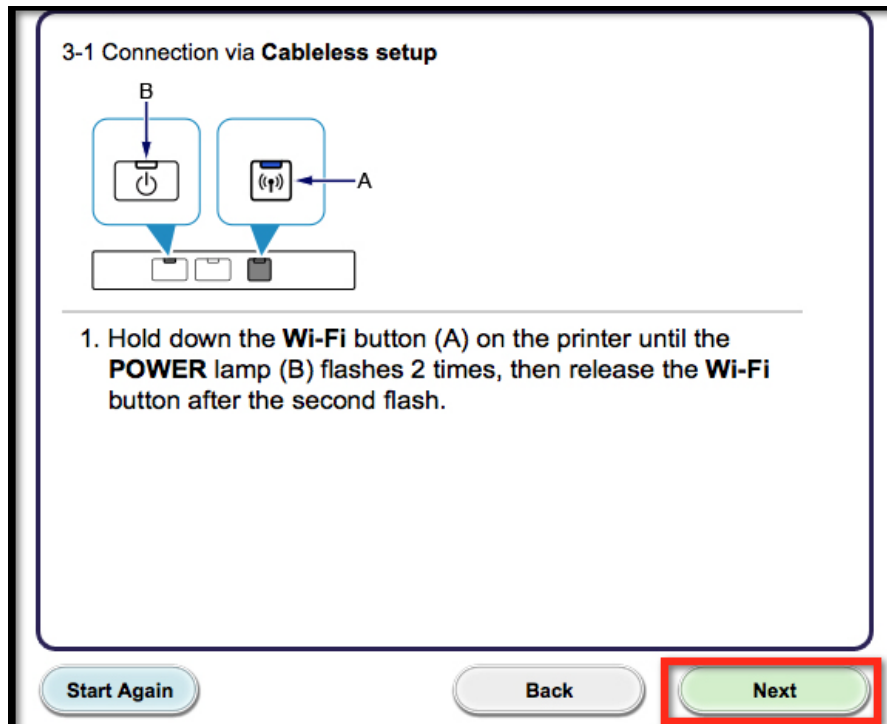


If the Install .NET Framework screen appears, Click Yes



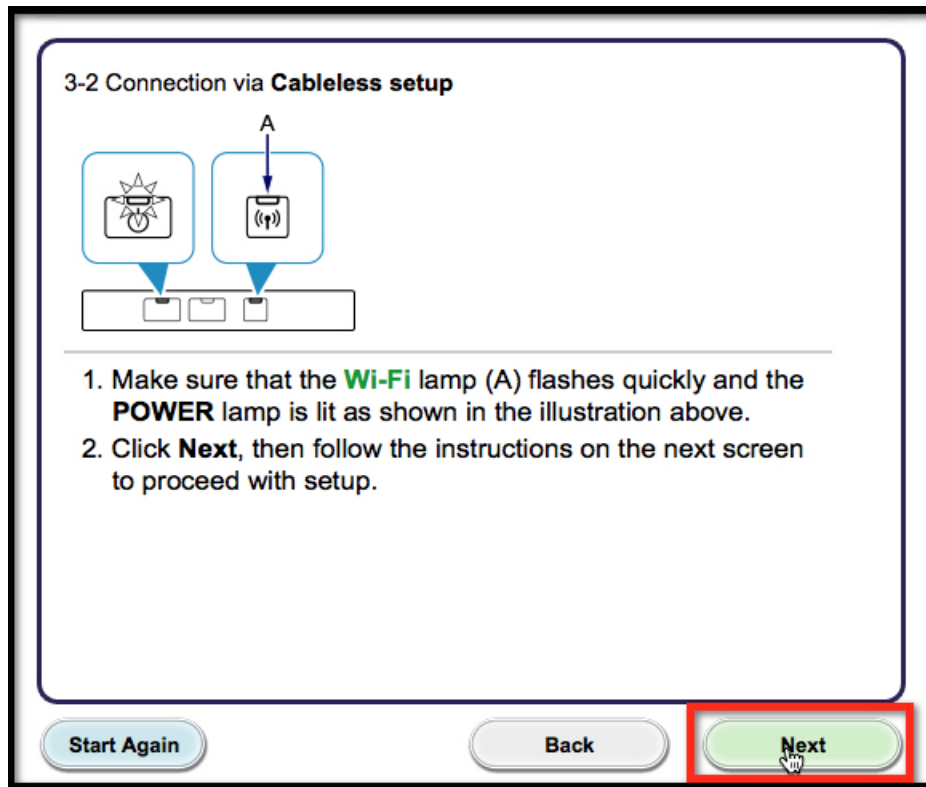
# Connecting to the Network

Carefully follow the instructions on the **Connection via Cableless setup** screen. (3-1). Click **Next**



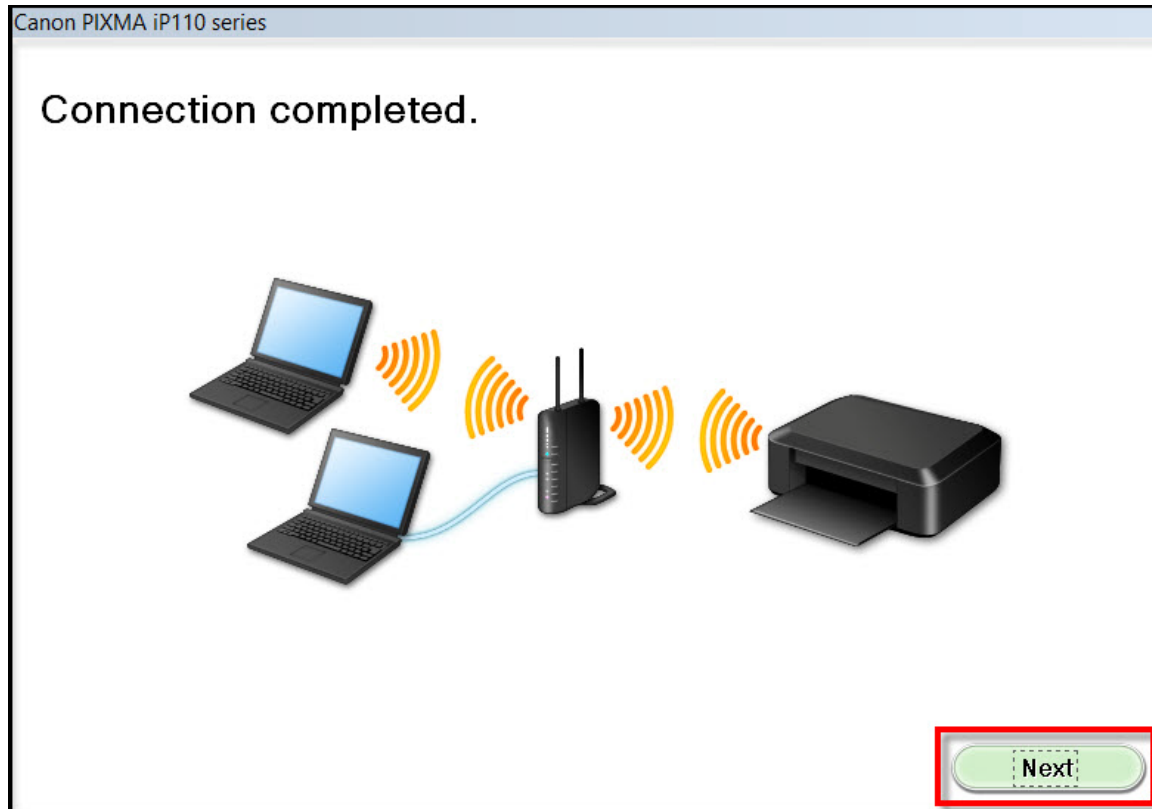
# Connecting to the Network

Carefully follow the instructions on the **Connection via Cableless setup** screen. (3-2). Click **Next**



# Connecting to the Network

Click **Next** on the **Connection completed** screen.



# Installing the Drivers & Software

Continue following on-screen instructions. On the **Software Installation List**, select \*software to install and click **Next**.

**\*IJ PrinterDriver** is required and cannot be deselected. We recommend installing **My Image Garden** and **Quick Menu** to take full advantage of the printer's features.

**Note:** It is not necessary to reinstall **My Image Garden** or **Quick Menu** if they were installed previously.

Canon PIXMA iP110 series

### Software Installation List

The selected software will be installed. Make sure that the software you want to install is selected, and then click [Next].

<input checked="" type="checkbox"/> IJ Printer Driver	145 MB	Drive C: 67390 MB free space Total used space: 1989 MB
<input checked="" type="checkbox"/> User's Manual	10 MB	
<input checked="" type="checkbox"/> My Printer	14 MB	
<input checked="" type="checkbox"/> My Image Garden	705 MB	
<input checked="" type="checkbox"/> Quick Menu	40 MB	
<input checked="" type="checkbox"/> Easy-WebPrint EX	110 MB	
<input type="checkbox"/> XPS Driver	130 MB	

Select All

Clear All

Back

Estimated installation time: 10 to 15 minutes  
Installation may take some time depending on your network environment.

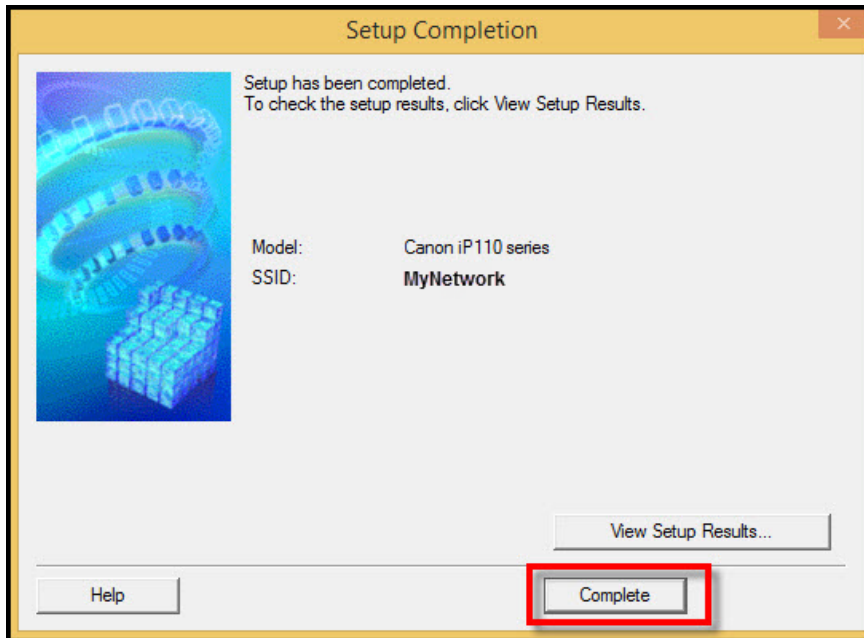
Next



# Installing the Drivers & Software

Continue following on-screen instructions.

When the **Setup Completion** dialog box appears, click **Complete**.



At this point, setup of the printer and network is complete. Continue to follow any remaining on-screen instructions to finish and exit the setup program.