



Getting Your Multifunction Back On Your Network After A Router Or Network Change

PIXMA iP110

Mac OS

Important

If any of the following situations exist

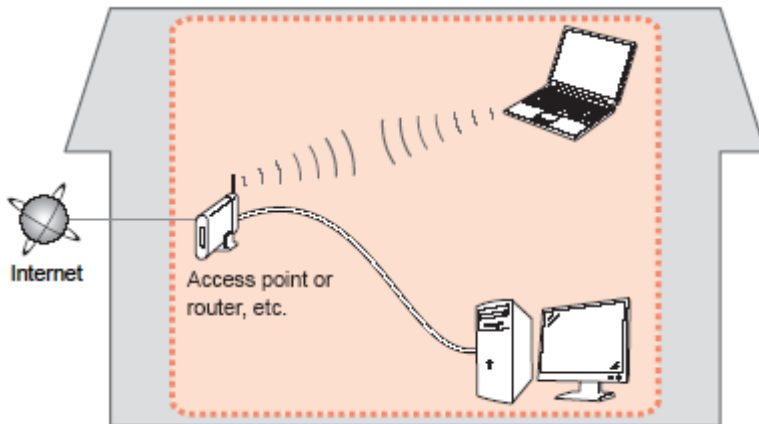
- You have replaced your Router or Access Point
- You want to use a different wireless network
- Router settings have been changed.

Please complete the following steps to apply the new configuration settings to your multifunction.

Preparing to Connect the Printer To the Network

Network Requirements

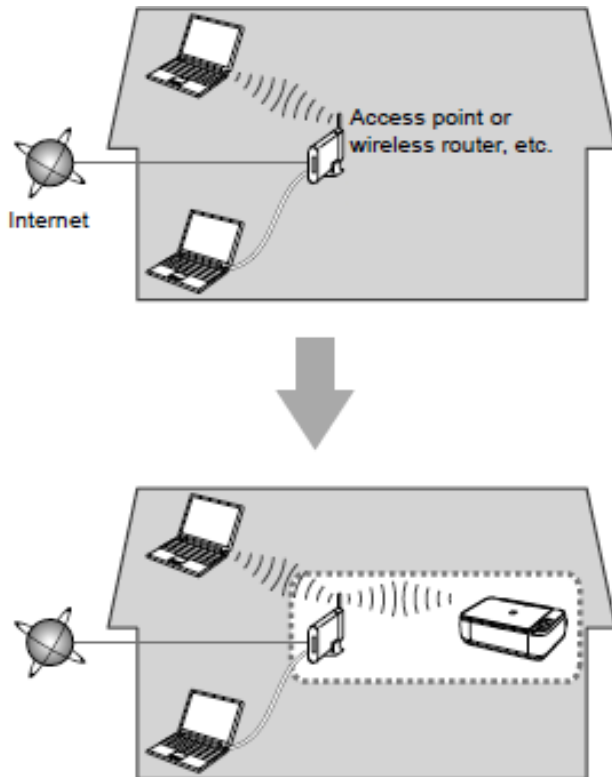
Before connecting the machine to the network, make sure that configuration of the computer and access point or router is complete, and that the computer is connected to the network.



Wireless Connection

Before connecting the machine to the network, the computer needs to be connected to the network. Make sure that configuration of the computer and access point or router is complete.

Preparing to Connect the Printer to the Network



Notes on Network Connection

- The configuration, router functions, setup procedures and security settings of the network device vary depending on your system environment. For details, refer to your device's instruction manual or contact its manufacturer.
- In an office setup, consult your network administrator
- If you connect to a network that is not protected with security measures, there is a risk of disclosing data such as your personal information to a third party.
- Place the machine and computer on the same network segment.

Installing the Drivers & Software

Software Installation

To use the machine by connecting it to a computer, software including the drivers needs to be copied (installed) to the computer's hard disk. Installation time varies depending on the computer environment or the number of application software to be installed.

IMPORTANT

- Log on as the administrator (or a member of the Administrators group).
- Quit all running applications before installation.
- Do not switch users during the installation process.
- Internet connection may be required during the installation. Connection fees may apply. Consult the internet service provider.
- If the firewall function of your security software is turned on, a warning message may appear that Canon software is attempting to access the network. If such a warning message appears, set the security software to always allow access.

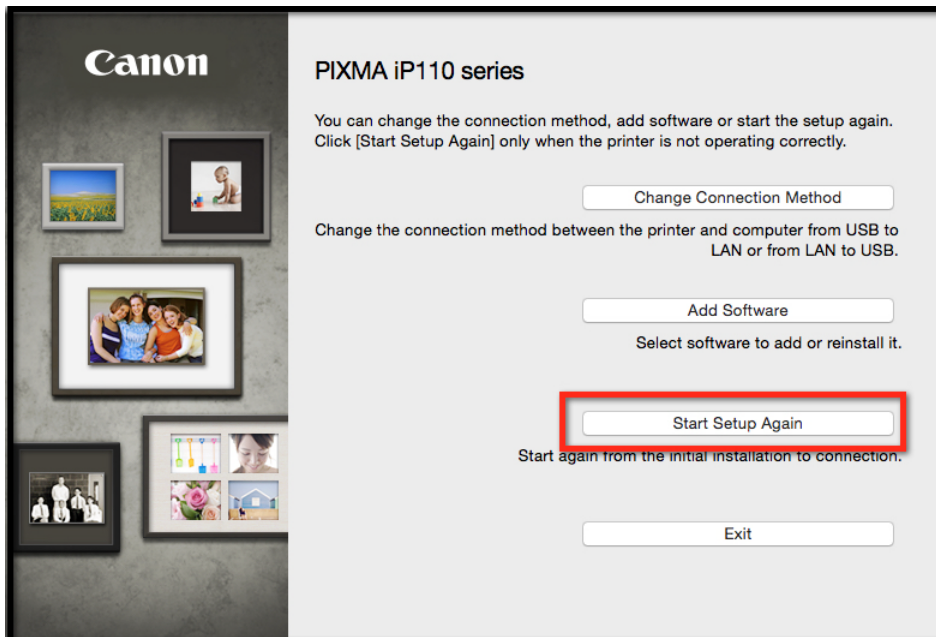
Installing the Drivers & Software

When you reinstall your printer on your network because of a router or network change, you follow the same procedure as for a first time install. A step-by-step walk through of the wireless setup is built into the installation routine of the software for your PIXMA.

To begin the reinstall of your PIXMA iP110 to your wireless network, you must first download the software to your computer. [Click here to download.](#)

After the file has downloaded successfully, double-click it to start the install procedure.

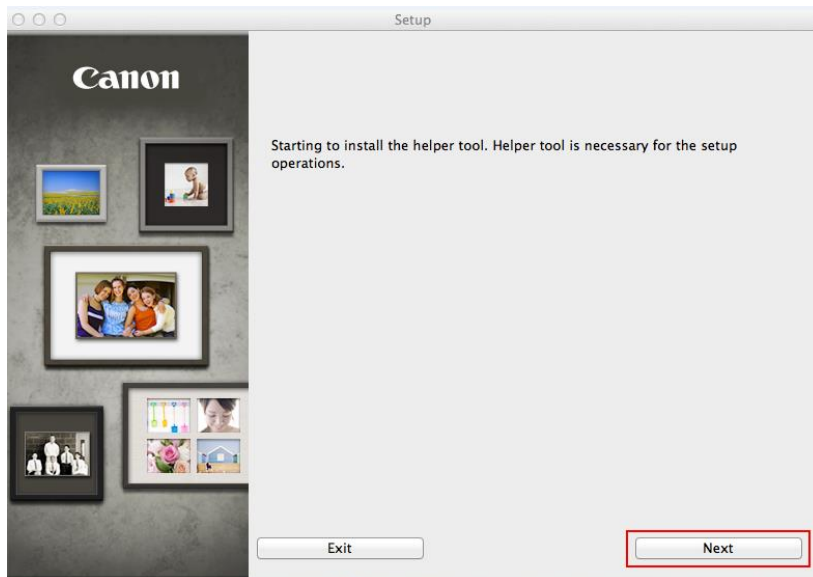
If the following screen appears, click **Start Setup Again**.



Installing the Drivers & Software

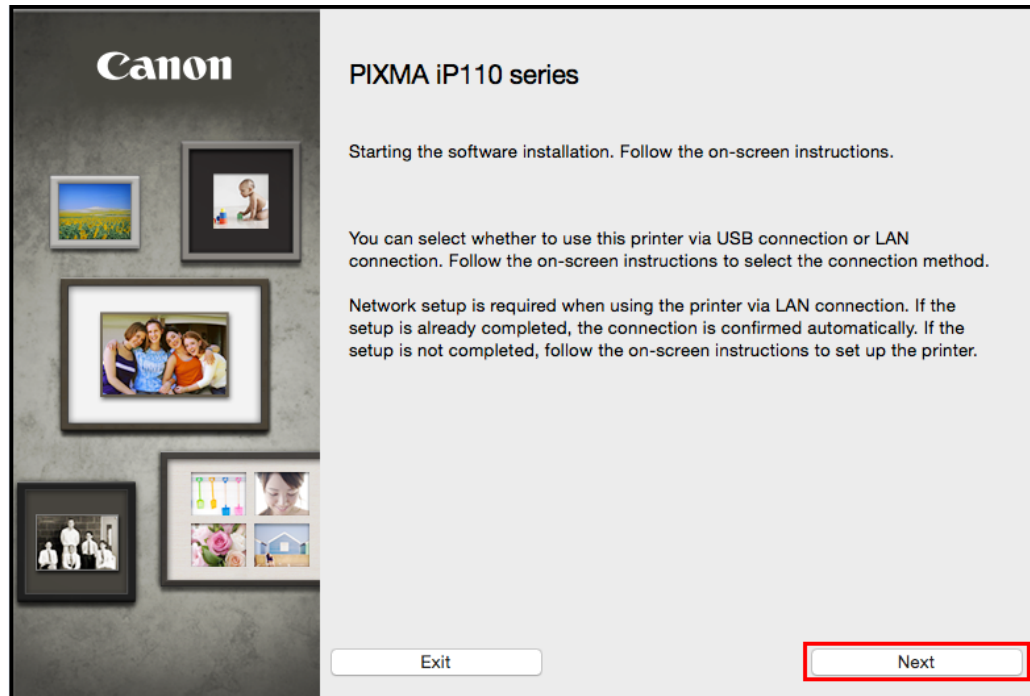
The setup instructions presented in this document describe the “**Cableless Setup**” method which does not require the need to know the SSID (network name), or network passphrase and does not require the printer to be temporarily connected to the computer with a USB cable.

Click **Next** on the first screen. If prompted, enter the Administrative Password to continue.



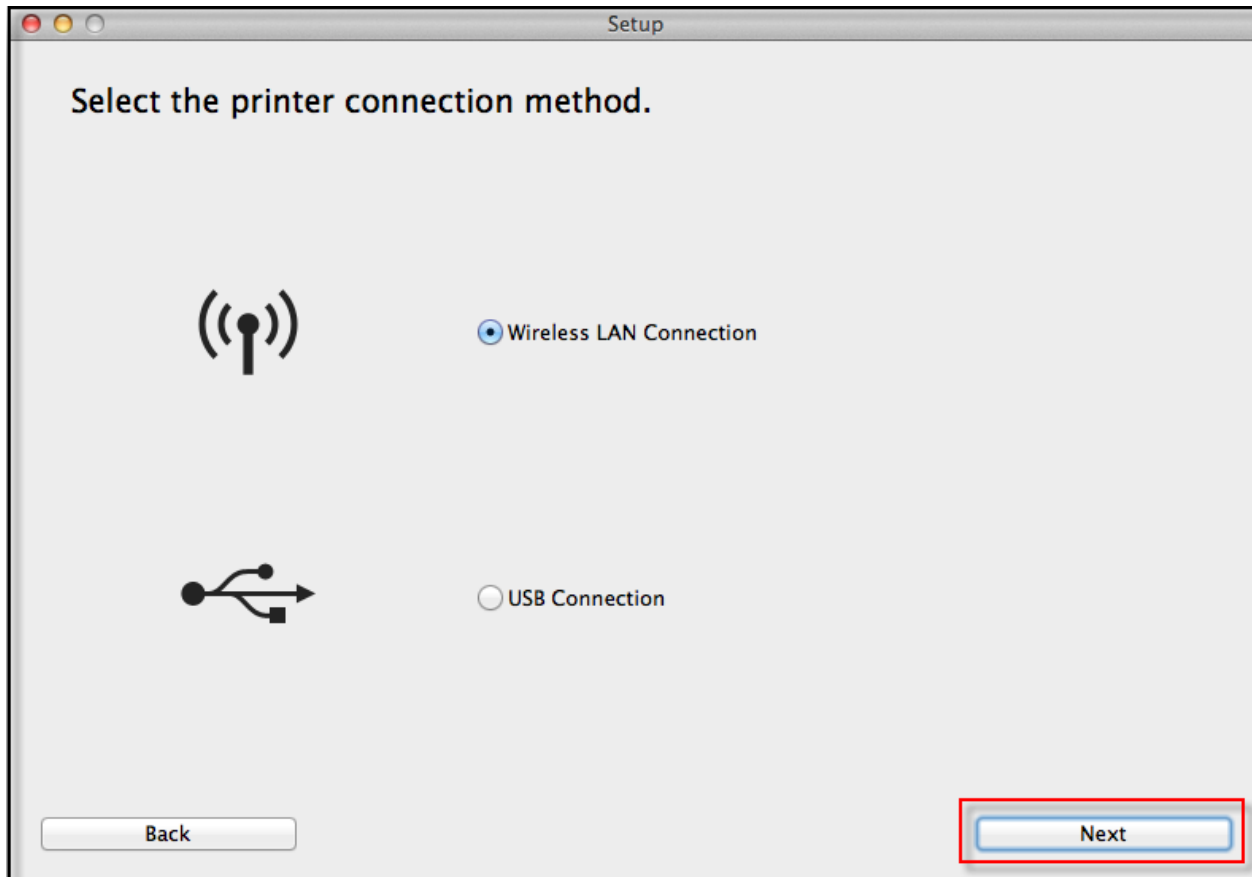
Installing the Drivers & Software

Click **Next** on the following screen.



Connecting to the Network


Follow on-screen instructions. Select **Wireless LAN Connection** and click **Next** on the following screen.




Connecting to the Network

Follow on-screen instructions. Select **Access Point Connection** and click **Next** on the following screen.

Select the wireless LAN connection method.

 ☒ Access Point Connection (recommended)
Connect the computer and the printer via wireless LAN router.

 ☐ Direct Connection
Directly connect the computer and the printer.

To switch between Access Point Connection and Direct Connection or for more details on the connection method, click [Instructions].

[Instructions](#)

[Back](#) [Next](#)

Connecting to the Network

Continue following on-screen instructions. On the **Printers on Network List**, check the **Setting printer could not be found on the list** checkbox and click **Next**.

Printers on Network List

Serial Number	MAC Address	IP Address

☒ Setting printer could not be found on the list

Update

1. To set a printer on the network, select one from the above printers list, and then click [Next].
Serial number can be found on the back of the printer or the Letter of Guarantee.
2. If the setting printer could not be found on the above list, turn on the printer and click [Update].
3. If the printer could not still be found, select [Setting printer could not be found on the list], and then click [Next].

Back

Next

Connecting to the Network

Continue to follow on-screen instructions.

Select **Cableless setup** on the **Setup Procedure Selection** screen (2-1).

2-1 Setup Procedure Selection

Select the most suitable connection method from the following.

Connect to **WPS-compatible Access Point**

WPS

Setting the Access Point Information to the Printer Directly from Computer, without Operating the Access Point

Cableless setup

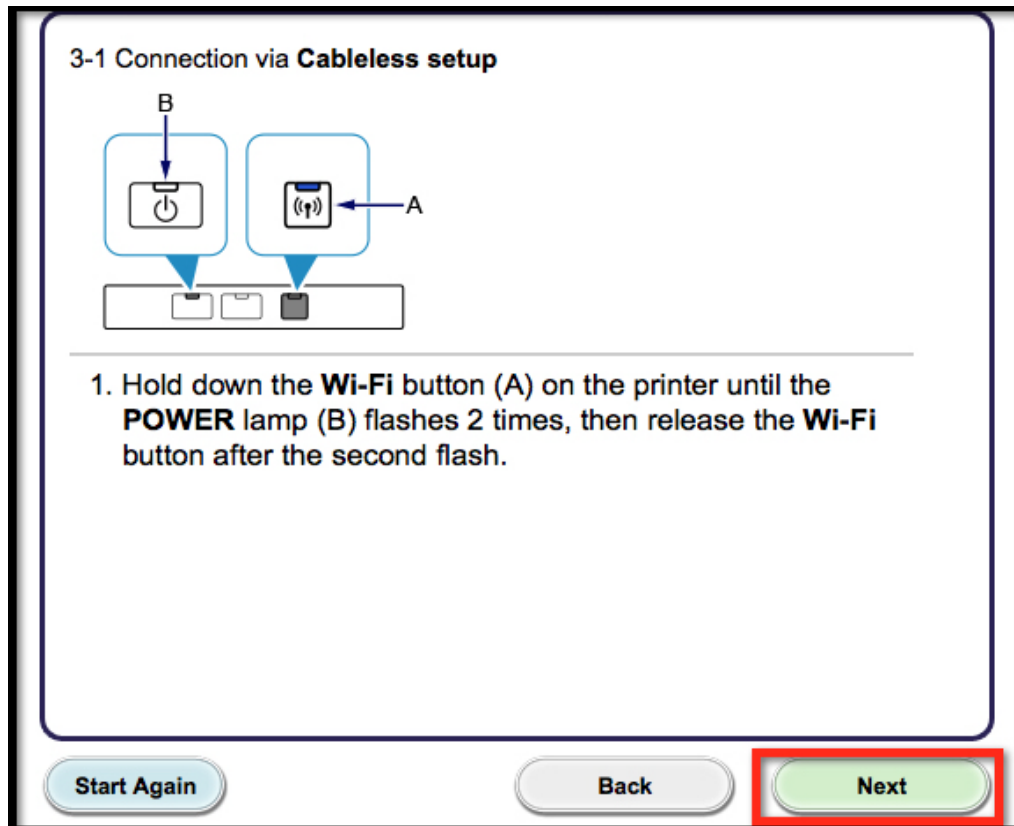
Cableless setup may take some time. Internet connection may become temporarily unavailable during setup.

Connect Using Other Methods

Other setup

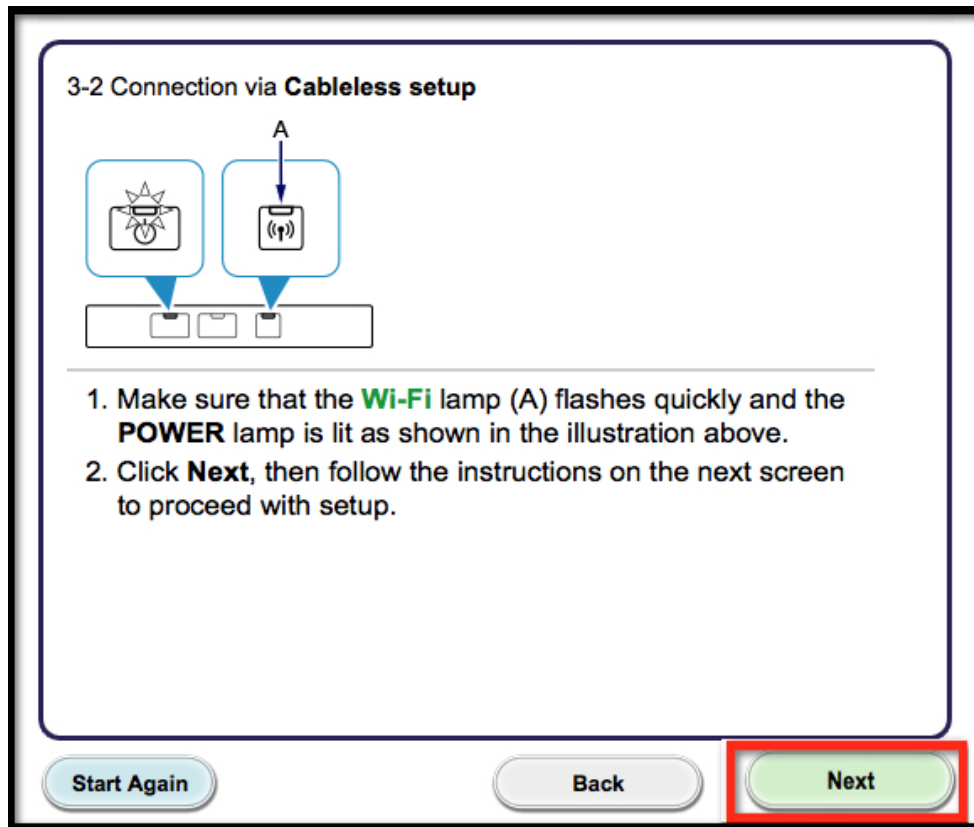
Connecting to the Network

Carefully follow the instructions on the **Connection via Cableless setup** screen. (3-1). Click **Next**.



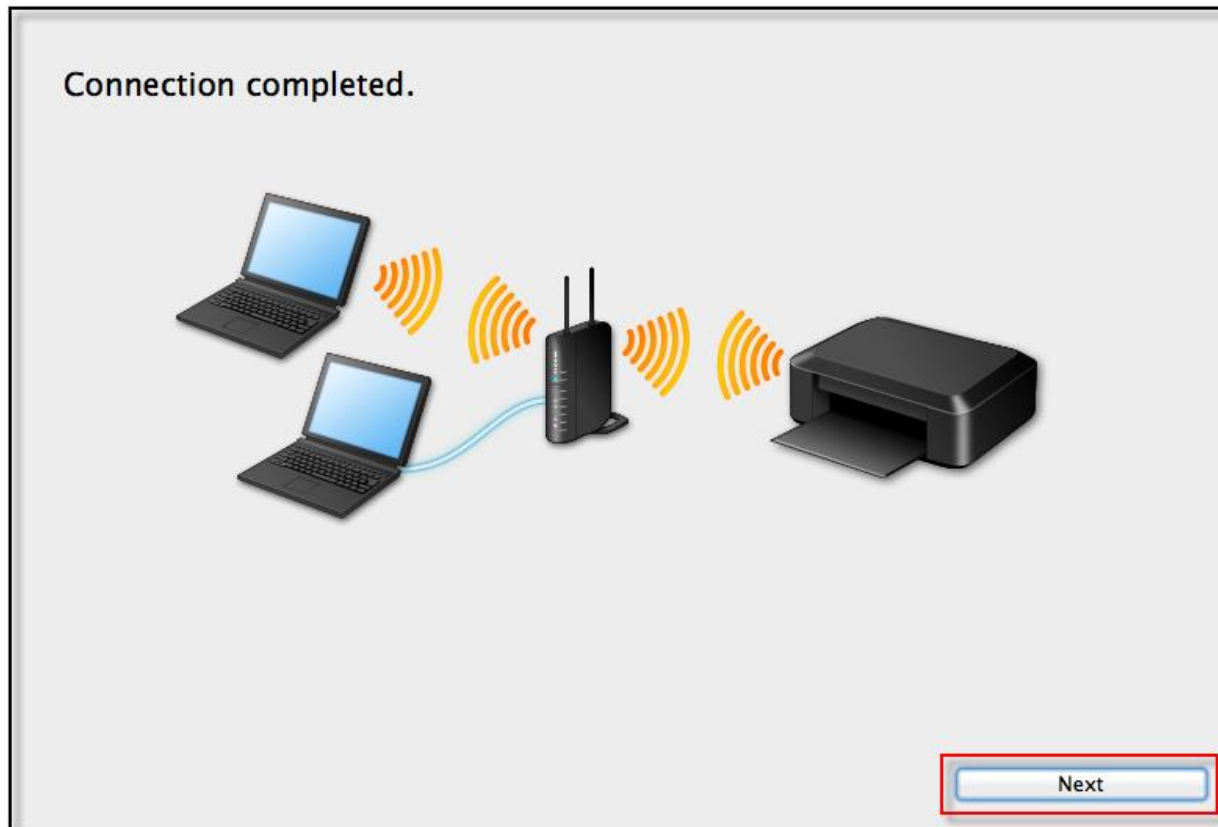
Connecting to the Network

Carefully follow the instructions on the **Connection via Cableless setup** screen. (3-2). Click **Next**.



Connecting to the Network

Click **Next** on the **Connection Completed** screen.



Installing the Drivers & Software

Continue following on-screen instructions. On the **Software Installation List**, select *software to install and click **Next**.

***Printer Driver** and **Canon IJ Network Tool** are required and cannot be deselected. We recommend installing **My Image Garden** and **Quick Menu** to take full advantage of the printer's features.

Note : It is not necessary to reinstall any of these additional programs if they were previously installed.

Software Installation List

The selected software will be installed. Make sure that the software you want to install is selected, and then click [Next].

You need to install all the software below to use all functions of this printer.

<input checked="" type="checkbox"/>	Printer Driver	100 MB	Drive Macintosh HD 961764 MB free space Total used space: 184 MB
<input type="checkbox"/>	User's Manual	124 MB	
<input type="checkbox"/>	My Image Garden	705 MB	
<input type="checkbox"/>	Quick Menu	25 MB	
<input checked="" type="checkbox"/>	Canon IJ Network Tool	20 MB	
<input type="checkbox"/>			
<input type="checkbox"/>			
<input type="checkbox"/>			
<input type="checkbox"/>			
<input type="checkbox"/>			
<input type="checkbox"/>			
<input type="checkbox"/>			

Select All

Clear All

Installation may take some time depending on your network environment.

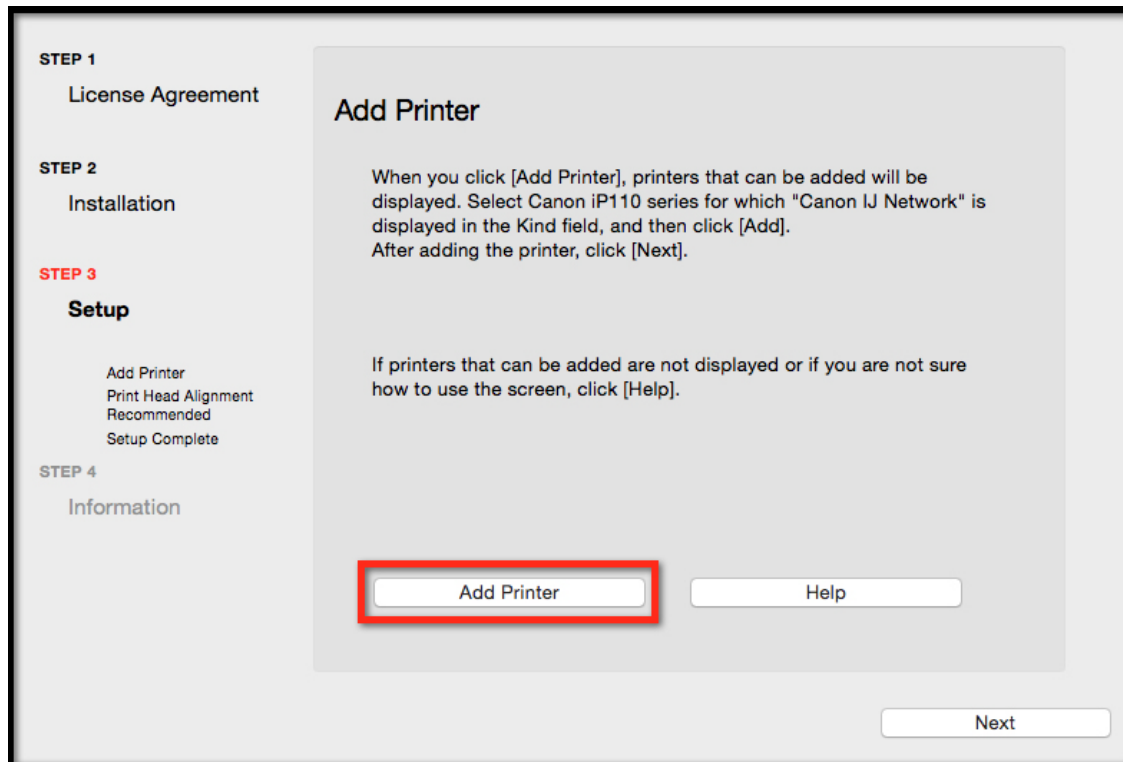
Back

Next

Adding the Printer

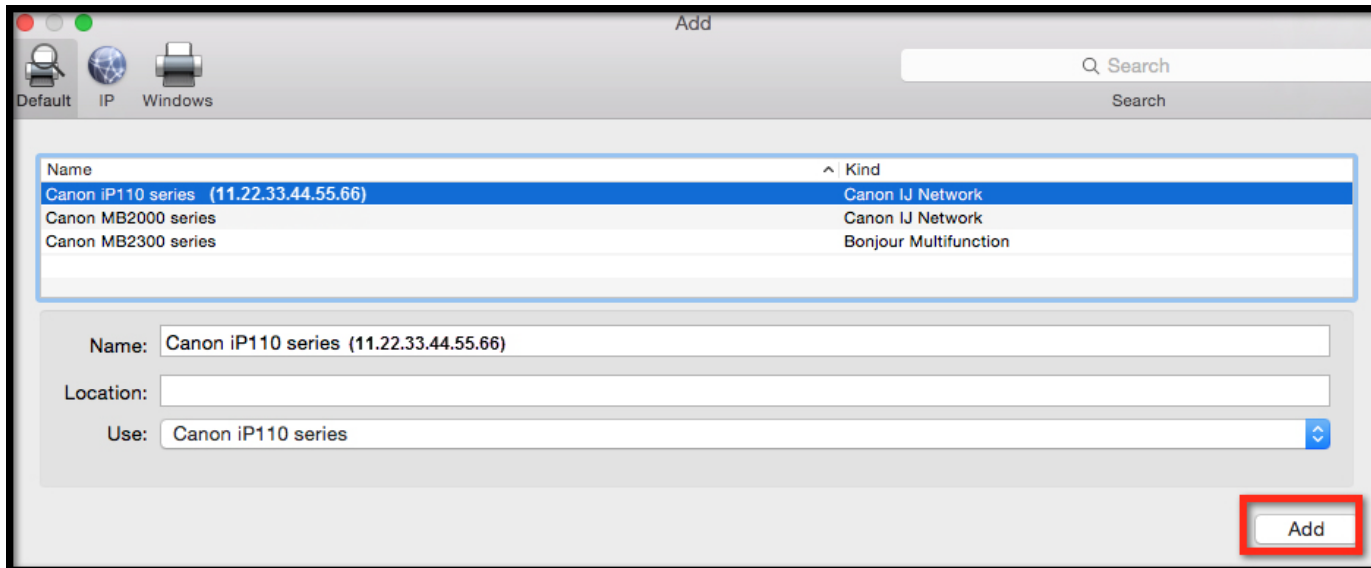
Continue following the on-screen instructions.

When the **Add Printer** screen appears, click **Add Printer**.



Adding the Printer

Select the **Canon iP110** with **Canon IJ Network** listed in the **Kind** column, then click **Add**.



Adding the Printer

Click **Next** on the **Add Printer** screen.

The screenshot shows a software setup wizard with a sidebar on the left and a main content area on the right. The sidebar contains four steps: STEP 1 License Agreement, STEP 2 Installation, STEP 3 Setup, and STEP 4 Information. STEP 3 is highlighted in red. Under STEP 3, there are four sub-items: Add Printer, Print Head Alignment Recommended, Setup Complete, and Information. The main content area is titled 'Add Printer' and contains two paragraphs of text. The first paragraph explains that when the 'Add Printer' button is clicked, a list of available printers will be shown, and users should select the Canon iP110 series for which 'Canon IJ Network' is displayed in the 'Kind' field, then click 'Add'. The second paragraph states that if no printers are displayed or the user is unsure how to use the screen, they should click 'Help'. At the bottom of the main content area, there are two buttons: 'Add Printer' and 'Help'. At the bottom right of the entire window, there is a 'Next' button, which is highlighted with a red rectangle.

STEP 1
License Agreement

STEP 2
Installation

STEP 3
Setup

- Add Printer
- Print Head Alignment Recommended
- Setup Complete

STEP 4
Information

Add Printer

When you click [Add Printer], printers that can be added will be displayed. Select Canon iP110 series for which "Canon IJ Network" is displayed in the Kind field, and then click [Add].
After adding the printer, click [Next].

If printers that can be added are not displayed or if you are not sure how to use the screen, click [Help].

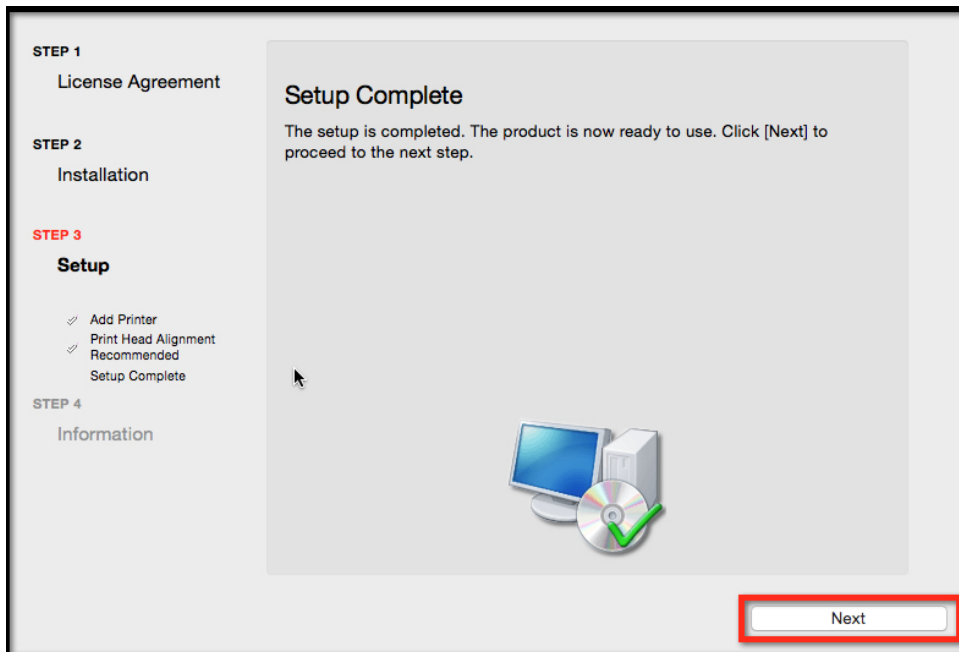
Add Printer Help

Next

Completing the Setup

Continue following on-screen instructions.

When the **Setup Complete** screen appears, click **Next**.



At this point, setup of the printer and network is complete. Continue to follow any remaining on-screen instructions to finish and exit the setup program.