



# **Getting Your Printer Back on the Network After a Router or Network Change**

**MAXIFY iB4020**

**Mac OS**

# Information

## Important

If any of the following situations exist

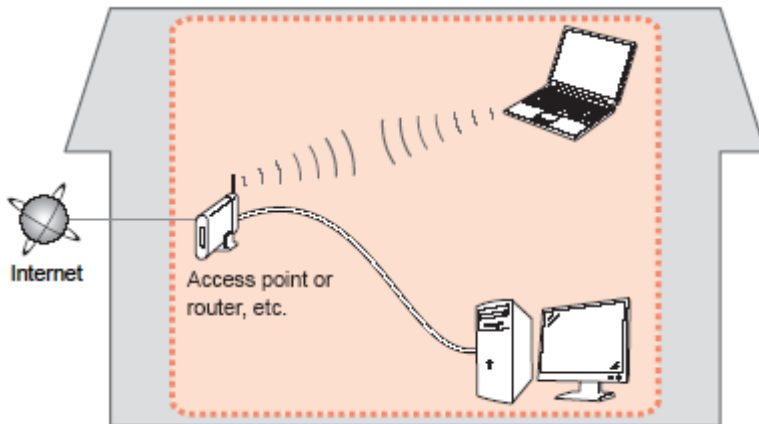
- You have replaced your Router or Access Point
- You want to use a different wireless network
- Router settings have been changed.

Please complete the following steps to apply the new configuration settings to your printer.

# Preparing to Connect to the Network

## Network Requirements

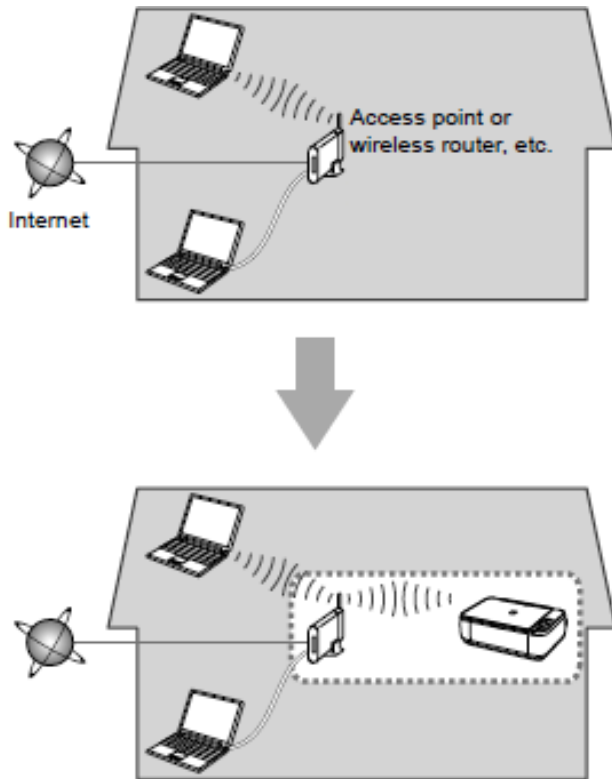
Before connecting the machine to the network, make sure that configuration of the computer and access point or router is complete, and that the computer is connected to the network.



## Wireless Connection

Before connecting the machine to the network, the computer needs to be connected to the network. Make sure that configuration of the computer and access point or router is complete.

# Preparing to Connect to the Network



## Notes on Network Connection

- The configuration, router functions, setup procedures and security settings of the network device vary depending on your system environment. For details, refer to your device's instruction manual or contact its manufacturer.
- In an office setup, consult your network administrator
- If you connect to a network that is not protected with security measures, there is a risk of disclosing data such as your personal information to a third party.
- Place the machine and computer on the same network segment.

# Setting up the Network Connection

## Software Installation

To use the machine by connecting it to a computer, software including the drivers needs to be copied (installed) to the computer's hard disk. Installation time varies depending on the computer environment or the number of application software to be installed.

### **IMPORTANT**

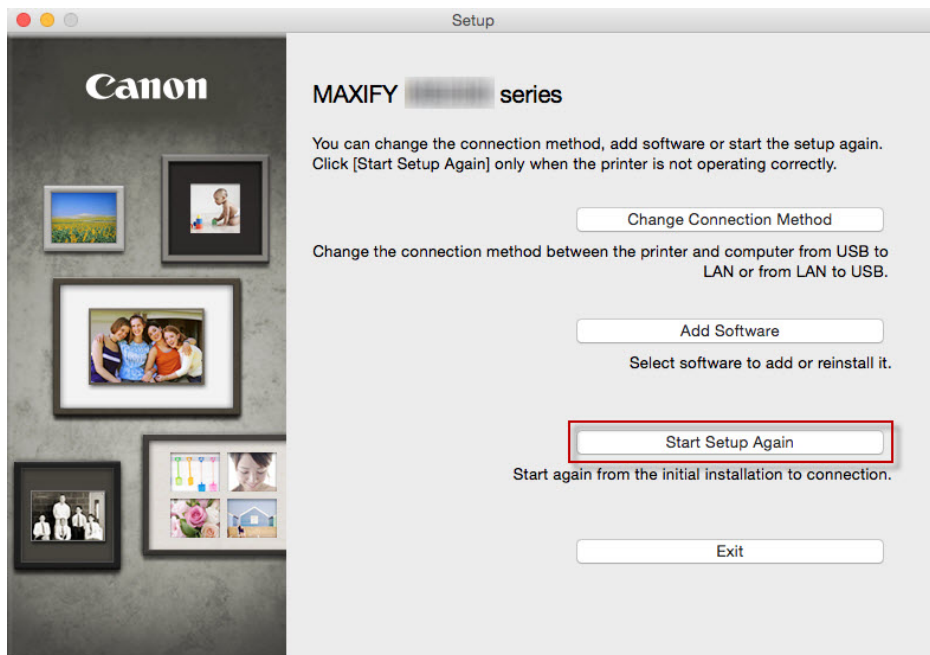
- Log on as the administrator (or a member of the Administrators group).
- Quit all running applications before installation.
- Do not switch users during the installation process.
- Internet connection may be required during the installation. Connection fees may apply. Consult the internet service provider.
- If the firewall function of your security software is turned on, a warning message may appear that Canon software is attempting to access the network. If such a warning message appears, set the security software to always allow access.

# Setting up the Network Connection

When you reinstall your printer on your network because of a router or network change, you follow the same procedure as for a first time install. A step-by-step walk through of the wireless setup is built into the installation routine of the software for your PIXMA.

To begin the reinstall of your MAXIFY iB4020 to your wireless network, you must first download the software to your computer.  
[Click here to download.](#)

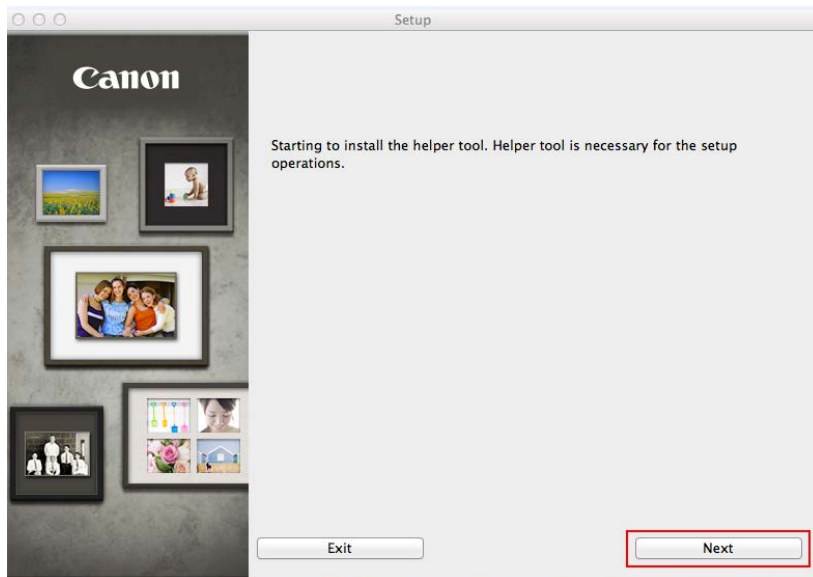
After the file has downloaded successfully, double-click it to start the install procedure. If the following screen appears, click **Start Setup Again**.



# Setting up the Network Connection

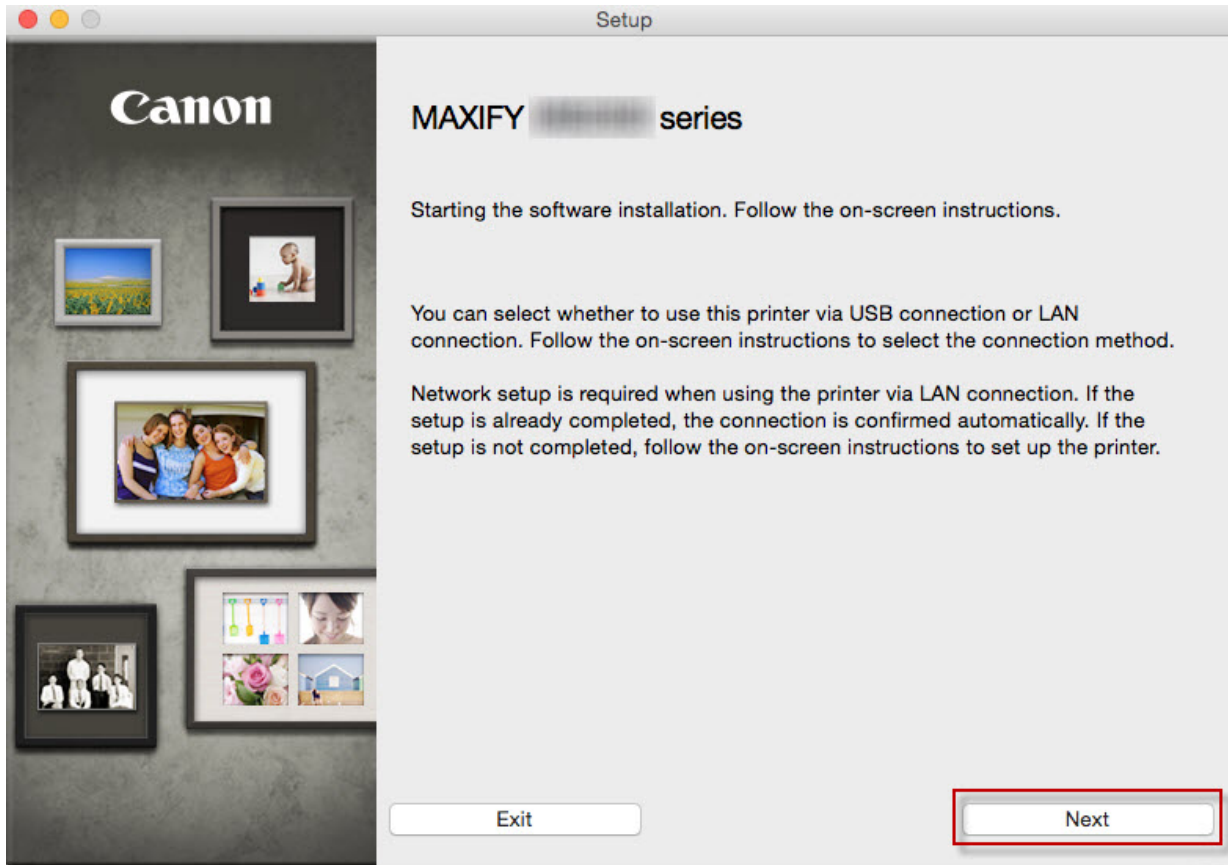
The setup instructions presented in this document describe the “**Cableless Setup**” method which does not require the need to know the Access Point (network name), or network password and does not require the printer to be temporarily connected to the computer with a USB cable.

Click **Next** on the first screen. If prompted, enter the Administrative Password to continue.



# Setting up the Network Connection

Click **Next** on the following screen.








# Setting up the Network Connection

Follow on-screen instructions. Select **Wireless LAN Connection** and click **Next** on the following screen.

Select the printer connection method.


	<input checked="" type="radio"/> Wireless LAN Connection
	<input type="radio"/> Wired LAN Connection
	<input type="radio"/> USB Connection

Back Next


# Setting up the Network Connection

Follow on-screen instructions. Select **Access Point Connection** and click **Next** on the following screen.

Select the wireless LAN connection method.



☒ Access Point Connection (recommended)  
Connect the computer and the printer via wireless LAN router.



☐ Direct Connection  
Directly connect the computer and the printer.

To switch between Access Point Connection and Direct Connection or for more details on the connection method, click [Instructions].

Instructions

Back

Next

# Setting up the Network Connection

Continue following on-screen instructions. On the **Printers on Network List**, check the **Setting printer could not be found on the list** checkbox and click **Next**.

### Printers on Network List

Serial Number	MAC Address	IP Address

☒ Setting printer could not be found on the list

Update

1. To set a printer on the network, select one from the above printers list, and then click [Next].  
Serial number can be found on the back of the printer or the Letter of Guarantee.

2. If the setting printer could not be found on the above list, turn on the printer and click [Update].

3. If the printer could not still be found, select [Setting printer could not be found on the list], and then click [Next].

Back

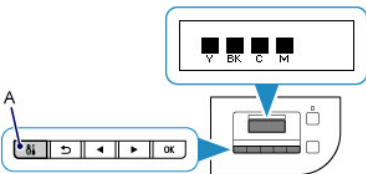
Next

# Setting up the Network Connection

Continue to follow on-screen instructions.

Follow the instructions on the **Printer Setup** screens (1-1 and 1-2) to select **Wireless LAN setup** on the printer.

1-1 Printer Setup



1. Make sure that the above screen is displayed.  
If another screen is displayed, press the **Setup** button (A) on the printer.

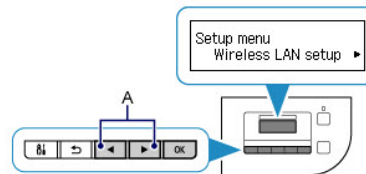
2. Press the **Setup** button.

Click **Next** to proceed to the next step.

Start Again

Next

1-2 Printer Setup



1. Use the ◀ or ▶ button (A) to select **Wireless LAN setup**.

2. Press the **OK** button.

Start Again

Back

Next

# Setting up the Network Connection

Continue to follow on-screen instructions.

Select **Other Methods** on the **Setup Procedure Selection** screen (2-1).

2-1 Setup Procedure Selection

The printer will automatically search for compatible **access points**.

Click the method below that matches the screen displayed on your printer.

Press WPS button of the

[Push Button Method](#)

If the Push Button Method screen is displayed on the printer but you are unsure if your access point or **router** supports this technology, press the **OK** button, then the **Stop** button. When the printer screen changes from left to right, click [here](#).

Wireless LAN setup  
WPS (Push button) ▶

[Other Methods](#)

**WPS or Cableless setup** can be selected in the next step. If your access point supports **WPS**, you can perform WPS setup, even if the **Wireless LAN setup** screen is displayed.

Start Again

Back

**\*Note:** If your printer's display looks like the screen shown above **Push Button Method** in the **Setup Procedure Selection** screen (2-1), press the **Stop** button before proceeding to the next instruction

# Setting up the Network Connection

Continue to follow on-screen instructions.

Select **Other setup** on the **Setup Procedure Selection** screen (2-2) and **Cableless setup** on the **Setup Procedure Selection** screen (2-3).

2-2 Setup Procedure Selection

Select the most suitable connection method from the following.

---

Connect to **Access Point** by entering the Network Password

---

When using **WEP key number** 2, 3 or 4, click **Other setup**, then select **Advanced setup**.

---

Connect to **WPS-compatible** Access Point

---

Connect Using Other Methods

2-3 Setup Procedure Selection

---

Connecting to the **Network** by Entering the **Access Point's** Settings Directly on the Printer

---

When using **WEP key number** 2, 3 or 4, select **Advanced setup**.  
Advanced setup method is intended for experienced users. If you are unfamiliar with Network functions, please click **Back** and select **Standard setup**.

---

Setting the Access Point Information to the Printer Directly from Computer, without Operating the Access Point

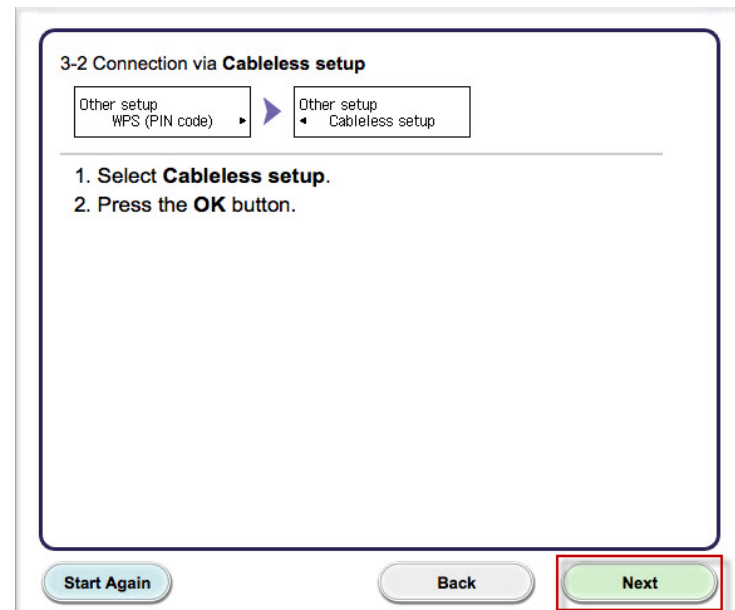
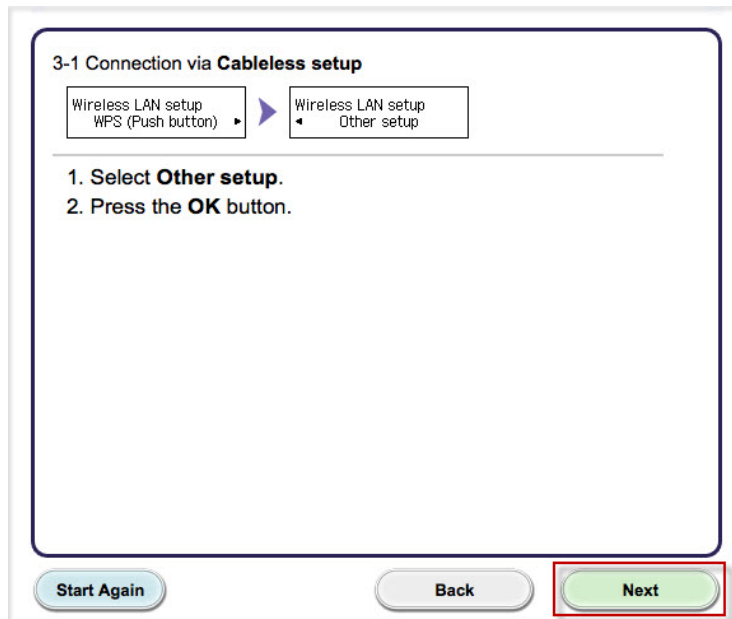
---

Cableless setup may take some time. Internet connection may become temporarily unavailable during setup.

# Setting up the Network Connection

Continue to follow on-screen instructions.

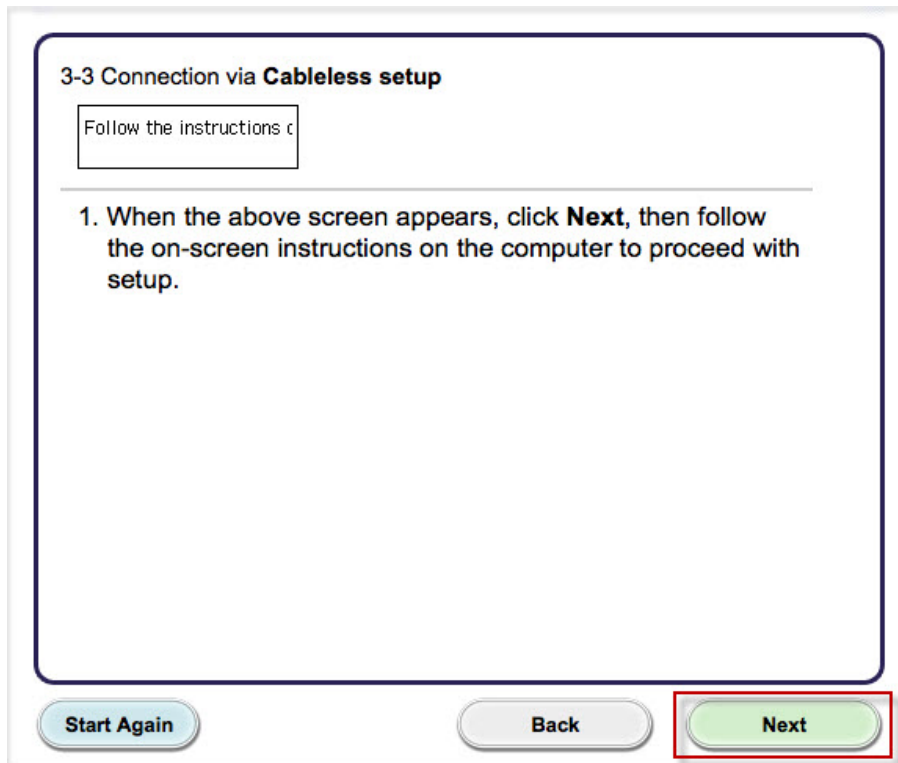
Select **Other setup** and **Cableless setup** on the **Connection via Cableless setup** screens (3-1 and 3-2).



# Setting up the Network Connection

Continue to follow on-screen instructions.

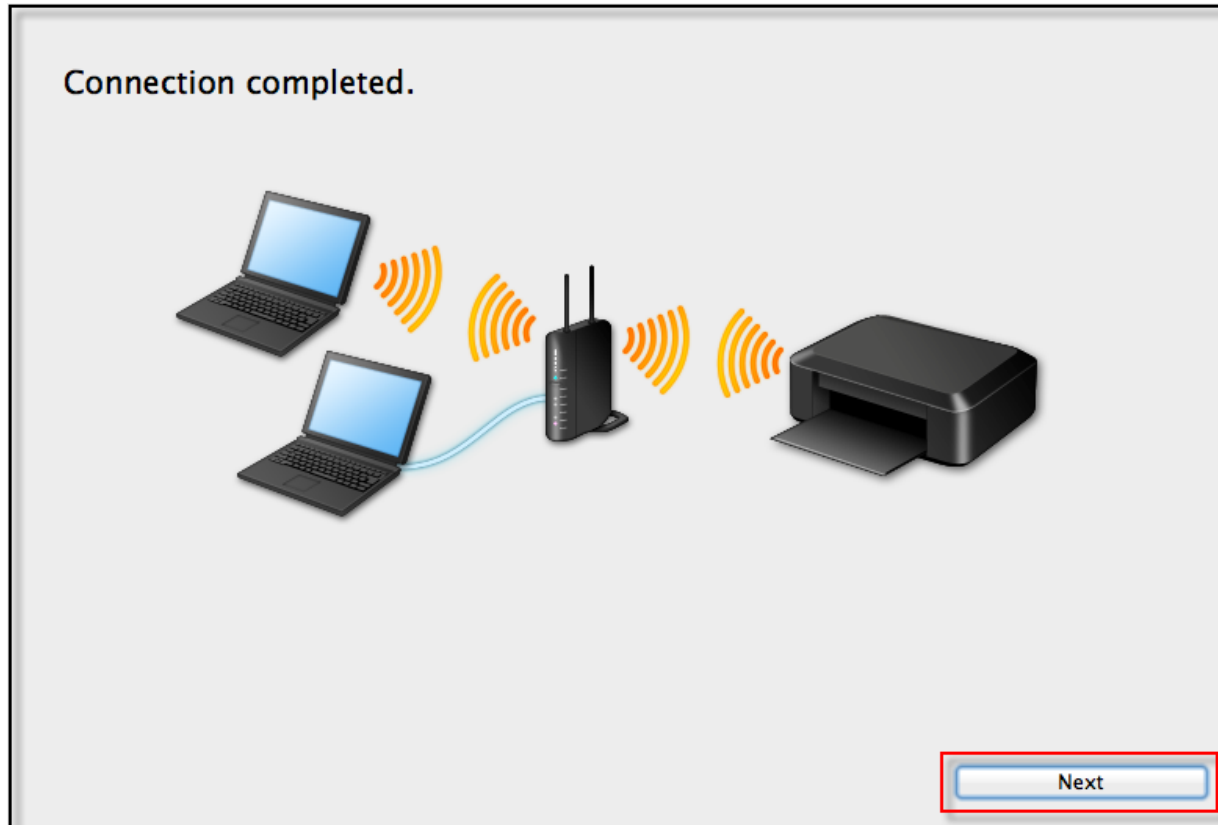
Press **OK** when “**Follow the instructions on the computer or Smartphone....**” appears, then click **Next** on the **Connection via Cableless setup** screen (3-3).





# Setting up the Network Connection

Click **Next** on the **Connection Completed** screen.



# Installing the Drivers & Software

Continue following on-screen instructions. On the **Software Installation List**, select \*software to install and click **Next**.

**\*Printer Driver and Canon IJ Network Tool** are required and cannot be deselected. We recommend installing **Quick Toolbox** to take full advantage of the printer's features\*\*.

**\*\* Note :** It is not necessary to reinstall any of these additional programs if they were previously installed.

## Software Installation List

The selected software will be installed. Make sure that the software you want to install is selected, and then click [Next].

You need to install all the software below to use all functions of this printer.

<input checked="" type="checkbox"/>	Printer Driver	100 MB
<input type="checkbox"/>	User's Manual	124 MB
<input type="checkbox"/>	Quick Toolbox	10 MB
<input checked="" type="checkbox"/>	Canon IJ Network Tool	20 MB

Drive Macintosh HD 961780 MB free space

Total used space: 184 MB

Select All

Clear All

Installation may take some time depending on your network environment.

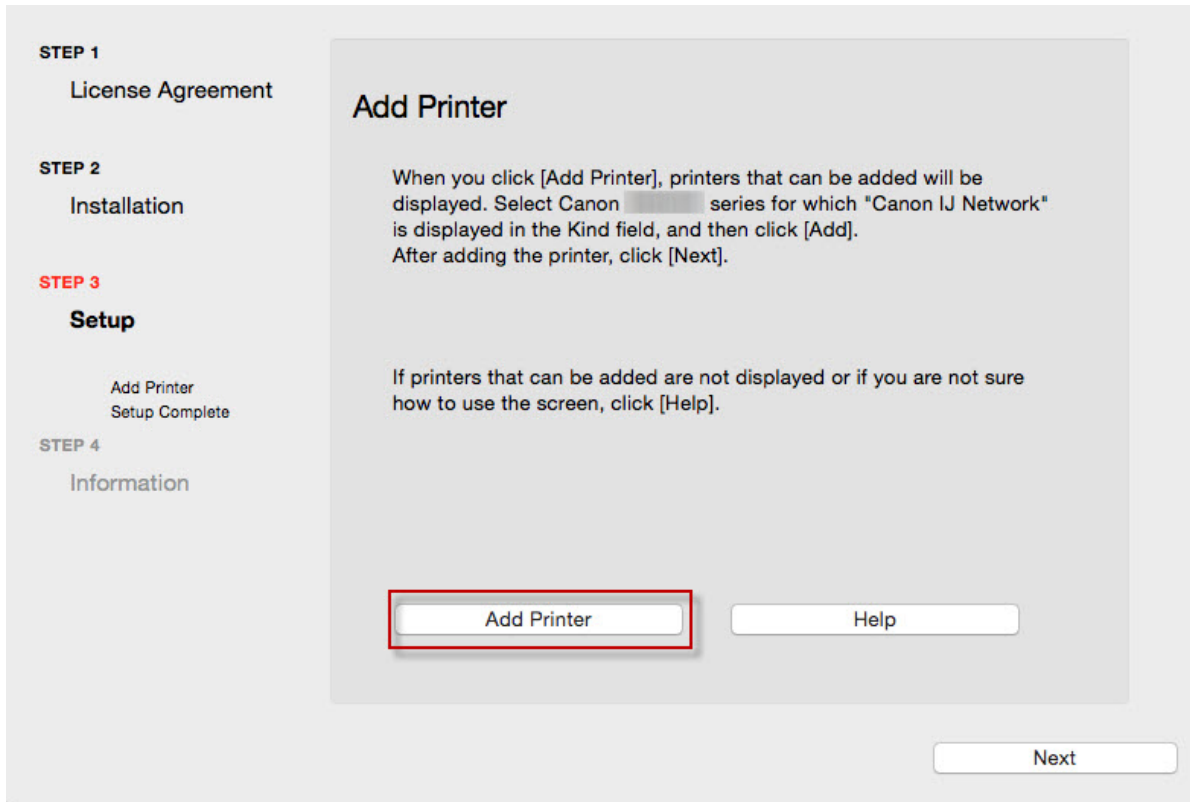
Back

Next

# Adding the Printer

Continue following the on-screen instructions.

When the **Add Printer** screen appears, click **Add Printer**.



# Adding the Printer

Select the **Canon iB4000 series** with **Canon IJ Network** listed in the **Kind** column, then click **Add**.

Mac OS X "Add Printer" window. The window title is "Add". It has three tabs: "Default", "IP", and "Windows". The "IP" tab is selected. There is a search bar at the top right with the placeholder text "Search".

Name	Kind
Canon	Canon IJ Network
Canon MB2300 series-2	Bonjour Multifunction
Canon MB5000 series	Bonjour
Canon MX470 series-4	Canon IJ Network
Canon MX510 series	Bonjour Scanner
Canon MX710 series	Canon IJ Network
Canon MX870 series	Bonjour Scanner

Below the table, there are three input fields:

- Name: Canon
- Location:
- Use: Canon

An "Add" button is located at the bottom right of the window.

# Adding the Printer

Click **Next** on the **Add Printer** screen.

The screenshot shows a software installation wizard with a sidebar on the left and a main content area on the right. The sidebar contains four steps: STEP 1 License Agreement, STEP 2 Installation, STEP 3 Setup, and STEP 4 Information. Under STEP 3, there are two sub-items: 'Add Printer' and 'Setup Complete'. The main content area is titled 'Add Printer' and contains two paragraphs of text. The first paragraph explains that clicking [Add Printer] will display a list of printers, and users should select a Canon series for which 'Canon IJ Network' is displayed in the Kind field, then click [Add]. The second paragraph states that if printers are not displayed or the user is unsure how to use the screen, they should click [Help]. At the bottom of the main content area, there are two buttons: 'Add Printer' and 'Help'. At the bottom right of the entire window, there is a 'Next' button, which is highlighted with a red rectangular border.

**STEP 1**  
License Agreement

**STEP 2**  
Installation

**STEP 3**  
**Setup**

Add Printer  
Setup Complete

**STEP 4**  
Information

## Add Printer

When you click [Add Printer], printers that can be added will be displayed. Select Canon [ ] series for which "Canon IJ Network" is displayed in the Kind field, and then click [Add]. After adding the printer, click [Next].

If printers that can be added are not displayed or if you are not sure how to use the screen, click [Help].

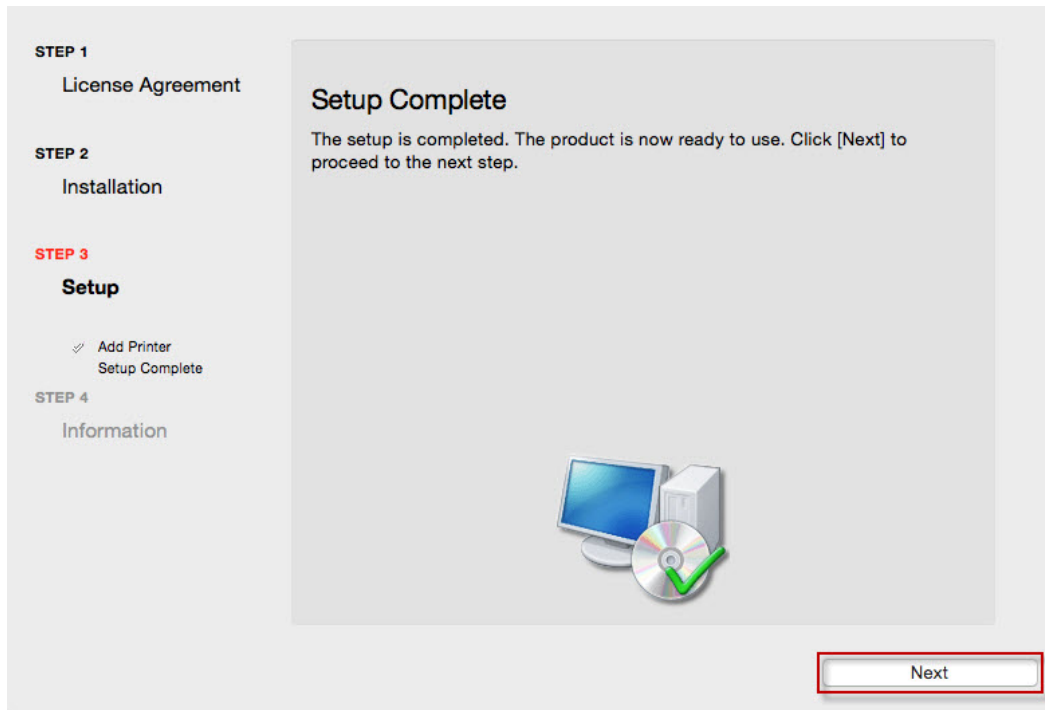
Add Printer Help

Next

# Completing the Setup

Continue following on-screen instructions.

When the **Setup Complete** screen appears, click **Next**.



At this point, setup of the printer and network is complete. Continue to follow any remaining on-screen instructions to finish and exit the setup program.