



# **Getting Your Multifunction Back On Your Network After A Router Or Network Change**

**PIXMA MG7120**

**Windows OS**

# Getting Your Multifunction Back On Your Network After A Router Or Network Change

PIXMA MG7120

Windows OS

|  |          |
|--|----------|
| <b>Preparing to Connect My Multifunction to My Network</b> | <b>3</b> |
| Network Requirements                                       | 3        |
| Notes on Wireless Connection                               | 4        |
| <b>Installing the Drivers &amp; Software</b>               | <b>6</b> |

## **Important**

If any of the following situations exist

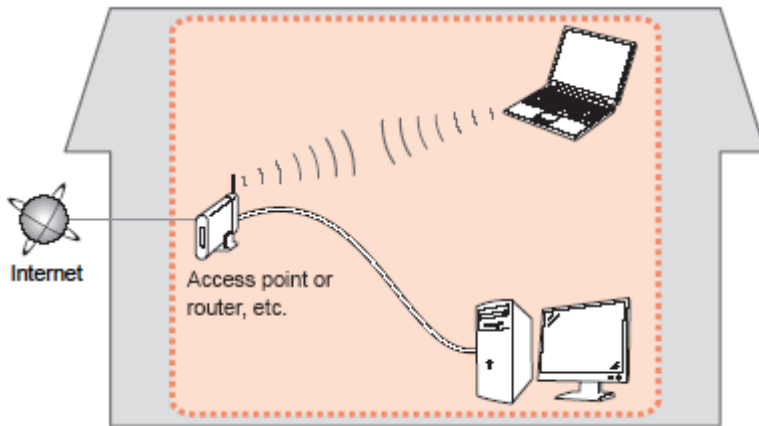
- You have replaced your Router or Access Point
- You want to use a different wireless network
- Router settings have been changed.

Please complete the following steps to apply the new configuration settings to your multifunction.

# Preparing to Connect the Multifunction To the Network

## Network Requirements

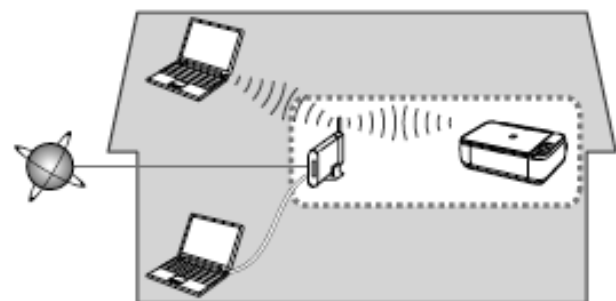
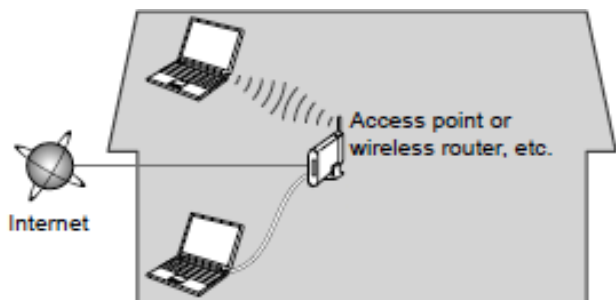
Before connecting the machine to the network, make sure that configuration of the computer and access point or router is complete, and that the computer is connected to the network.



## Wireless Connection

Before connecting the machine to the network, the computer needs to be connected to the network. Make sure that configuration of the computer and access point or router is complete.

# Preparing to Connect the Multifunction To the Network



An "Ad-hoc connection," which establishes a direct connection to the computer over a wireless connection without using an access point, is not supported.

## Notes on Network Connection

- The configuration, router functions, setup procedures and security settings of the network device vary depending on your system environment. For details, refer to your device's instruction manual or contact its manufacturer.
- In an office setup, consult your network administrator
- If you connect to a network that is not protected with security measures, there is a risk of disclosing data such as your personal information to a third party.
- Place the machine and computer on the same network segment.

# Installing the Drivers & Software

## Software Installation

To use the machine by connecting it to a computer, software including the drivers needs to be copied (installed) to the computer's hard disk. Installation time varies depending on the computer environment or the number of application software to be installed.

### **IMPORTANT**

- Log on as the administrator (or a member of the Administrators group).
- Quit all running applications before installation.
- Do not switch users during the installation process.
- Internet connection may be required during the installation. Connection fees may apply. Consult the internet service provider.
- It may be necessary to restart your computer during the installation process. Follow the on-screen instructions and do not remove the Setup CD-ROM during restarting. The installation resumes once your computer has restarted.
- If the firewall function of your security software is turned on, a warning message may appear that Canon software is attempting to access the network. If such a warning message appears, set the security software to always allow access.

# Installing the Drivers & Software

When you reinstall your printer on your network because of a router or network change, you follow the same procedure as for a first time install. A step-by-step walk through of the wireless setup is built into the installation routine of the software for your PIXMA.

To begin the setup procedure, insert the Setup CD-ROM into your computer.\*



The setup program will start automatically. The setup instructions presented in this document describe the “**Cableless Setup**” method which does not require the need to know the SSID (network name), or network passphrase and does not require the printer to be temporarily connected to the computer with a USB cable.

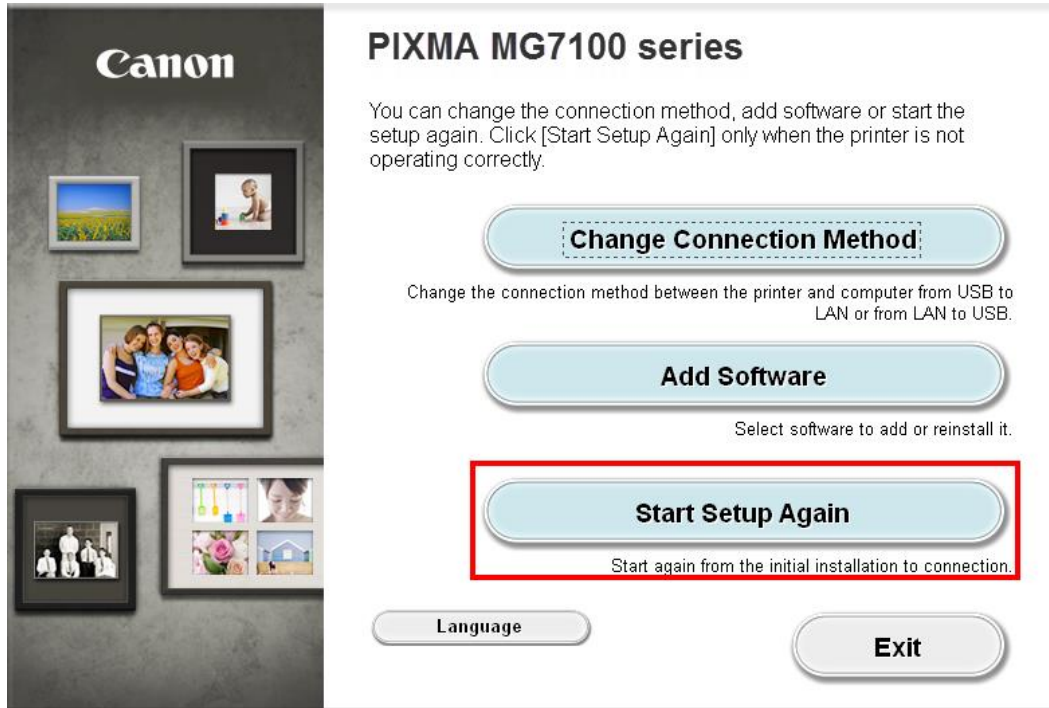
\*If you don't have or cannot use the Setup CD-ROM, follow the steps below to start the setup.

- [Download the software](#) (click the link to download)
- Double-click the downloaded .exe file (Win-MG7100-1\_0-ucd.exe)

If the **User Account Control** dialog box appears during the setup, click **Yes** or **Continue**.

# Installing the Drivers & Software

Click **Start Setup Again** if the following screen appears.

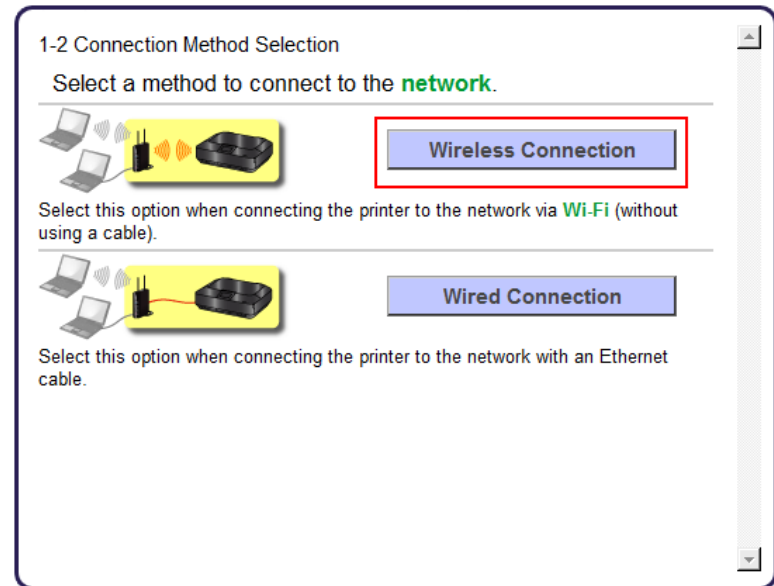
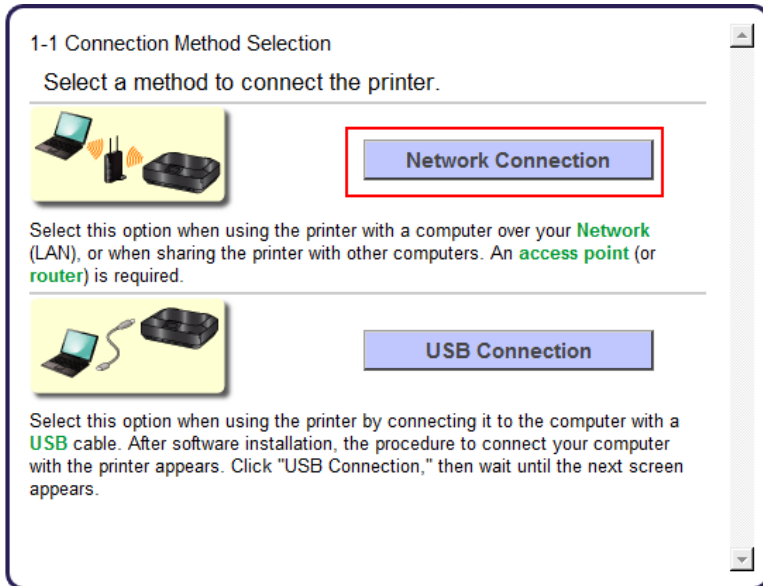


\* **For Windows XP Users:** The Cableless Setup is not supported in Windows XP. Use the “**Standard Setup**” method to re-install the MG7120 on your wireless network. [Click here for instructions.](#)



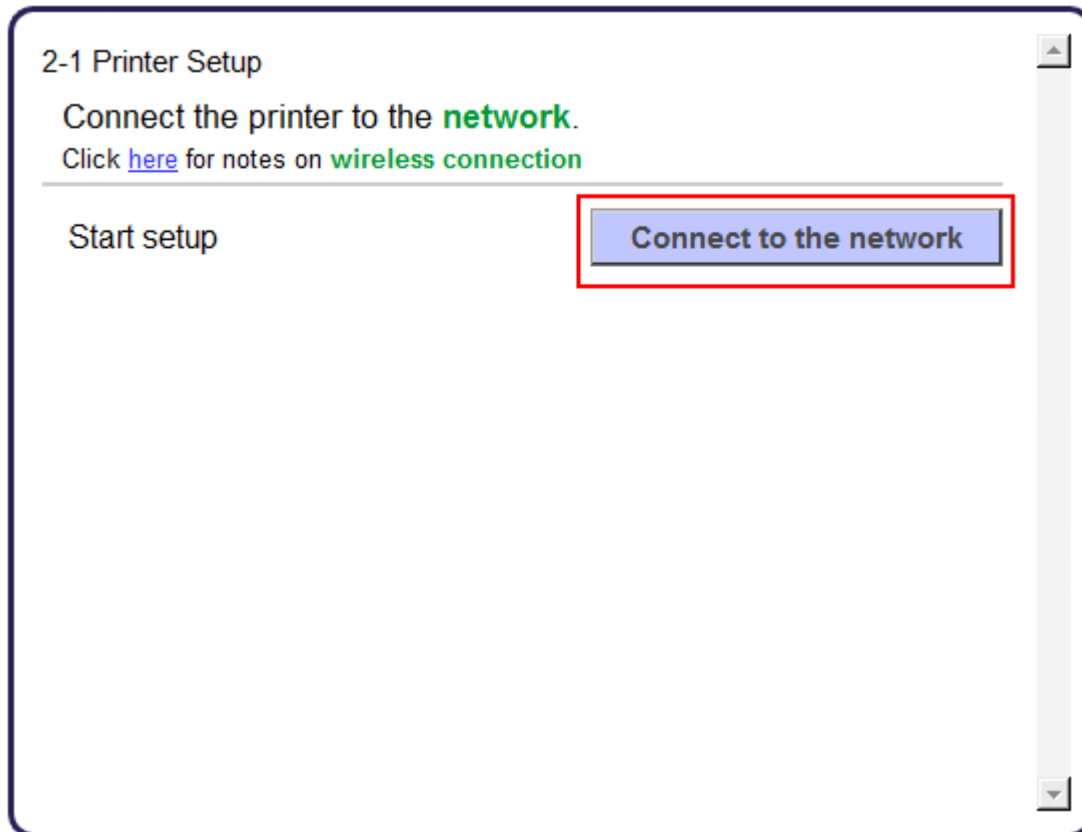
# Installing the Drivers & Software

On the **Connection Method Selection** screen (1-1) select **Network Connection**, then select **Wireless Connection** on screen (1-2).



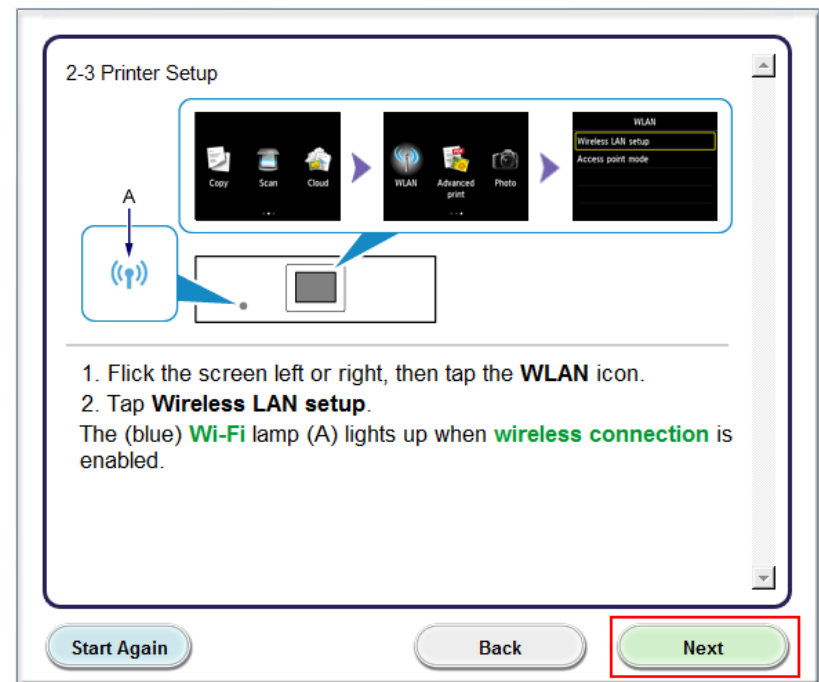
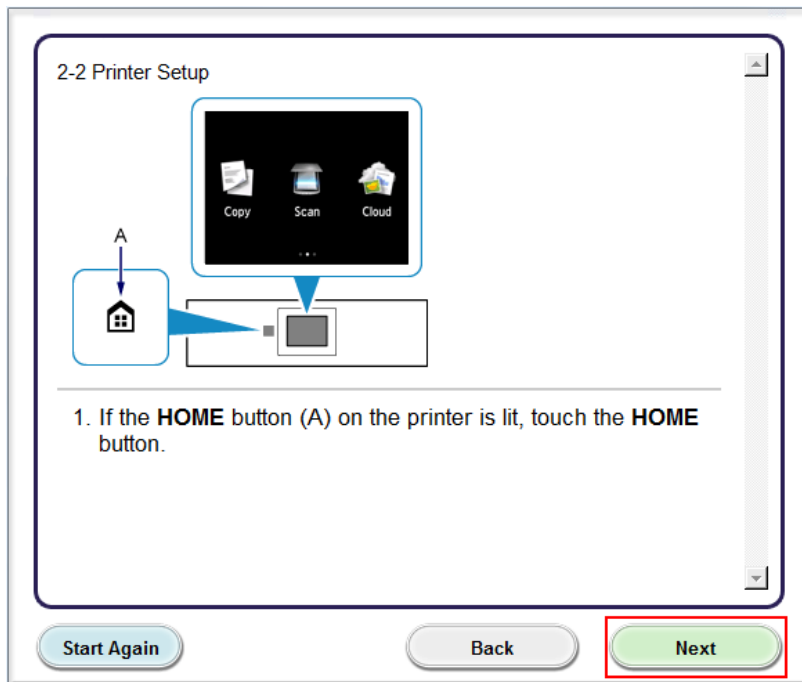
# Installing the Drivers & Software

Continue to follow on-screen instructions. Select **Connect to the network** on the **Printer Setup (2-1)** screen.



# Installing the Drivers & Software

Continue to follow on-screen instructions. If the **HOME** button is lit, touch the **HOME** button and click **Next**. Then, flick the screen left or right and tap the **WLAN** icon. Then tap **Wireless LAN setup**. Click **Next**.



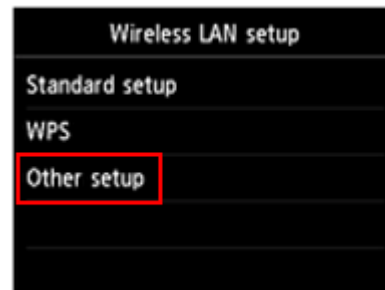
# Installing the Drivers & Software

If your printer's display is the same as example **A**, tap **To other connection methods**. The display will then change to the display example **B**.



**A**

When the display changes to **B** or was **B** to begin with, tap **Other setup**



**B**

# Installing the Drivers & Software


Click **Other Methods** on the **Setup Procedure Selection** screen (3-1).

3-1 Setup Procedure Selection

The printer will automatically search for compatible **access points**.

Click the method below that matches the screen displayed on your printer.

\* If the Push Button Method screen is displayed on the printer  
When you are unsure if your access point or **router** supports this technology, tap **To other connection methods**.  
When the printer screen changes from left to right, click [here](#)  
Proceed to the screen for Standard setup.



[Push Button Method](#)

[Other Methods](#)

# Installing the Drivers & Software

On the **Setup Procedure Selection** screens (3-1) and (3-2), click **Other setup** on step (3-2) then **Cableless setup** on (3-3) .

3-2 Setup Procedure Selection

Select the most suitable connection method from the following.

Connect to **Access Point** by entering the Network Password

Connect to **WPS**-compatible Access Point

Connect Using Other Methods

3-3 Setup Procedure Selection

Connecting to the **Network** by Entering the **Access Point's** Settings Directly on the Printer

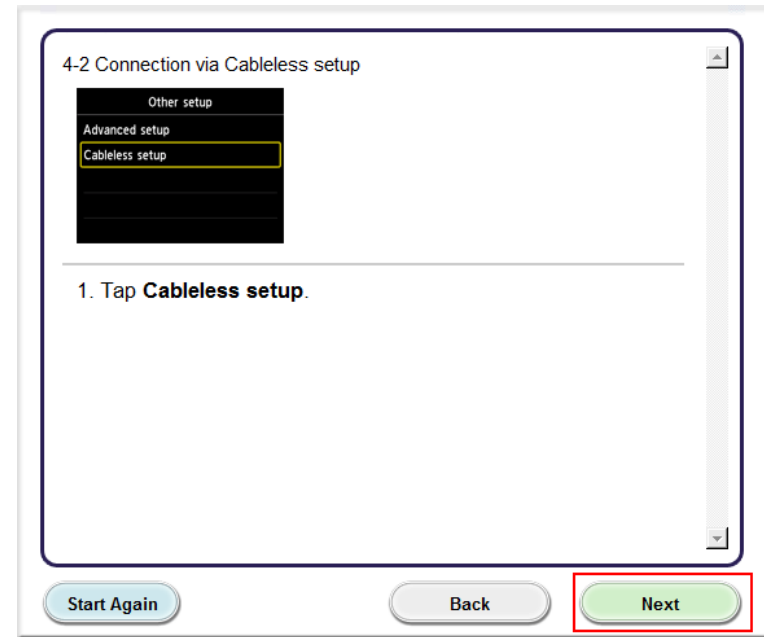
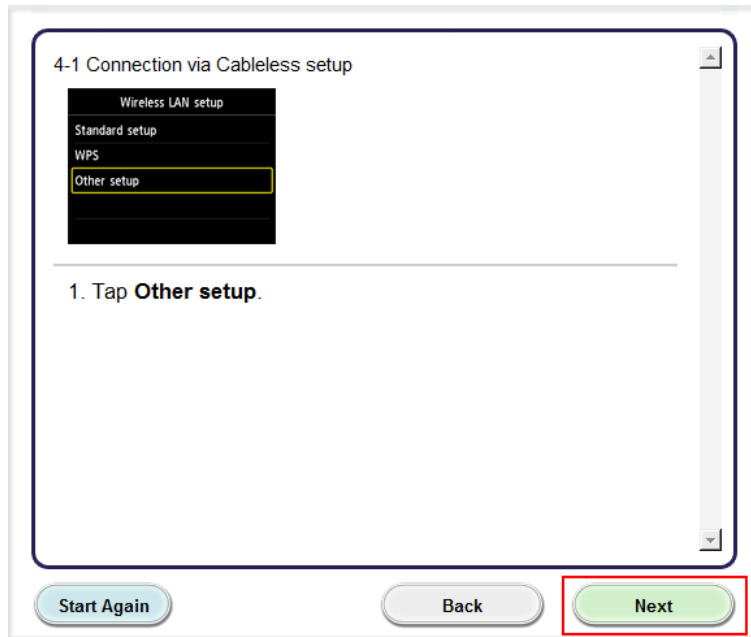
When using **WEP key number** 2, 3 or 4, select "Advanced setup".  
Advanced setup method is intended for experienced users. If you are unfamiliar with Network functions, please click "Back" and select "Standard setup".

Connect Directly from Computer over **Wireless Connection**

Cableless setup may take some time. Internet connection may become temporarily unavailable during setup.  
Cableless setup is not available on Windows XP. Perform setup with another connection method.

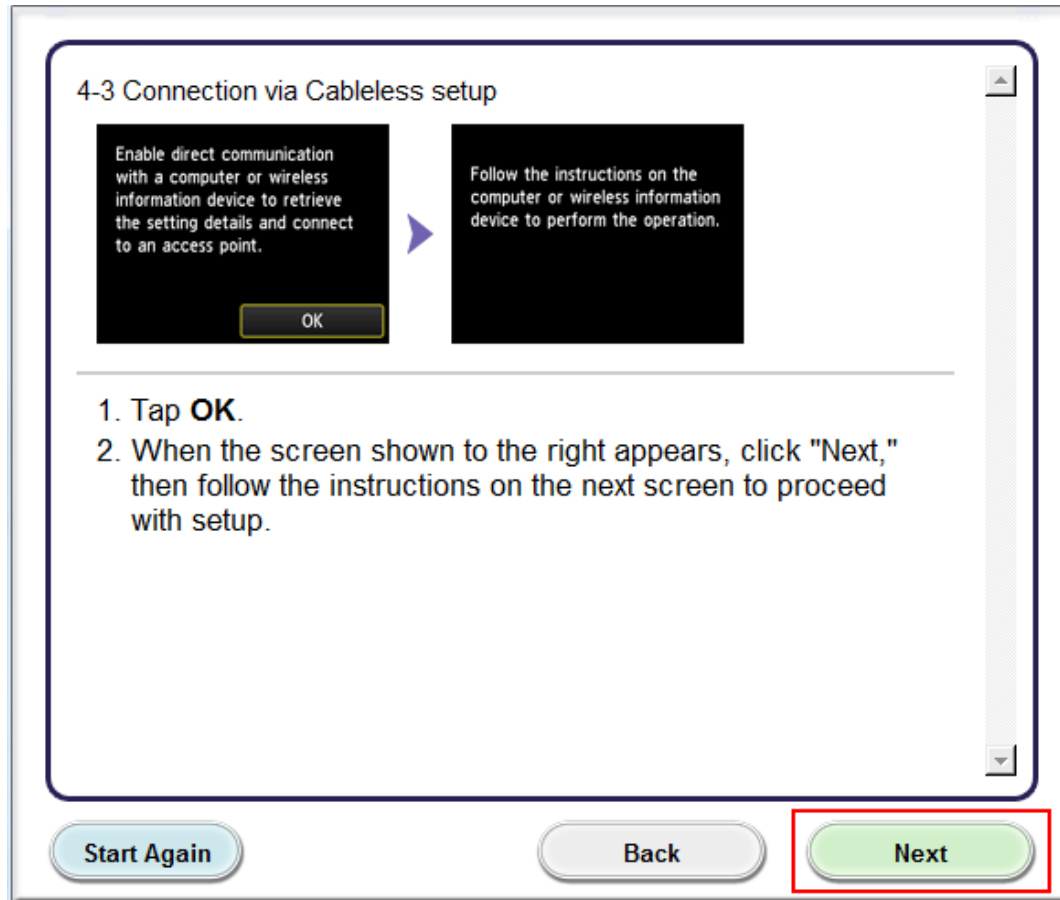
# Installing the Drivers & Software

On the printer's touch-screen, tap **Other setup** then tap **Cableless setup**. Click **Next** on the on-screen instructions after each selection.



# Installing the Drivers & Software

Tap **OK** on your printer's touch-screen. Click **Next** on the **Connection via Cableless setup** screen (4-3)

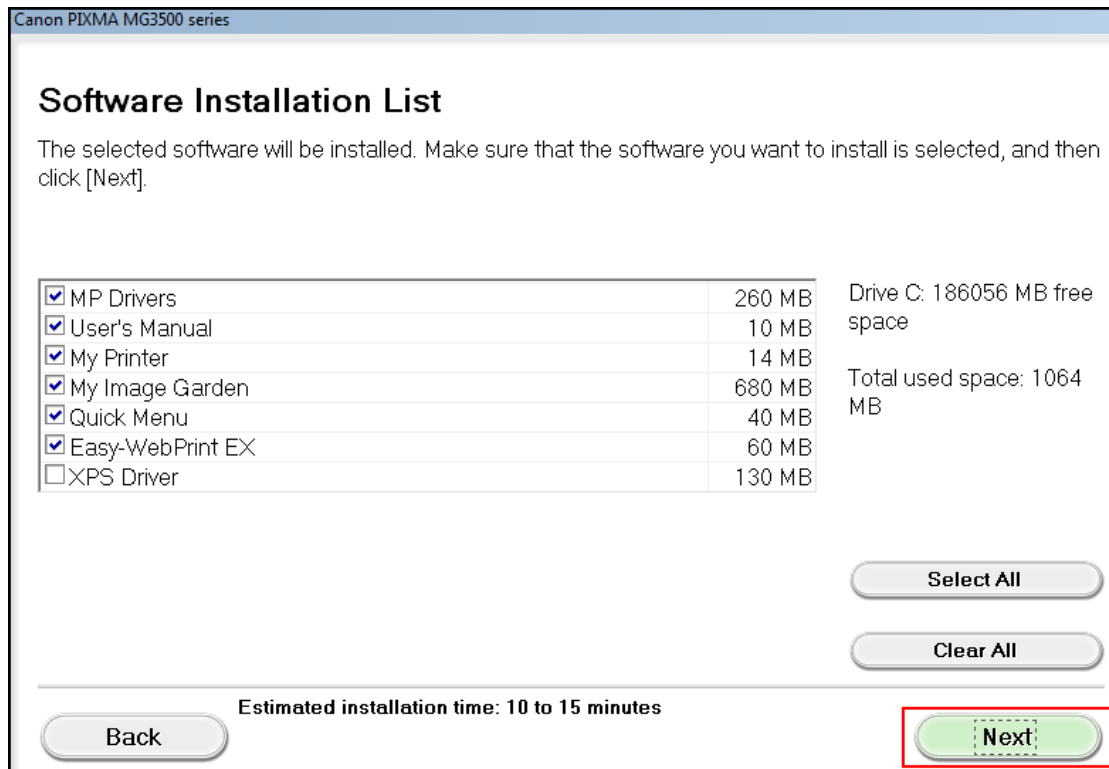




# Installing the Drivers & Software

Continue following on-screen instructions. On the **Software Installation List**, select \*software to install and click **Next**.

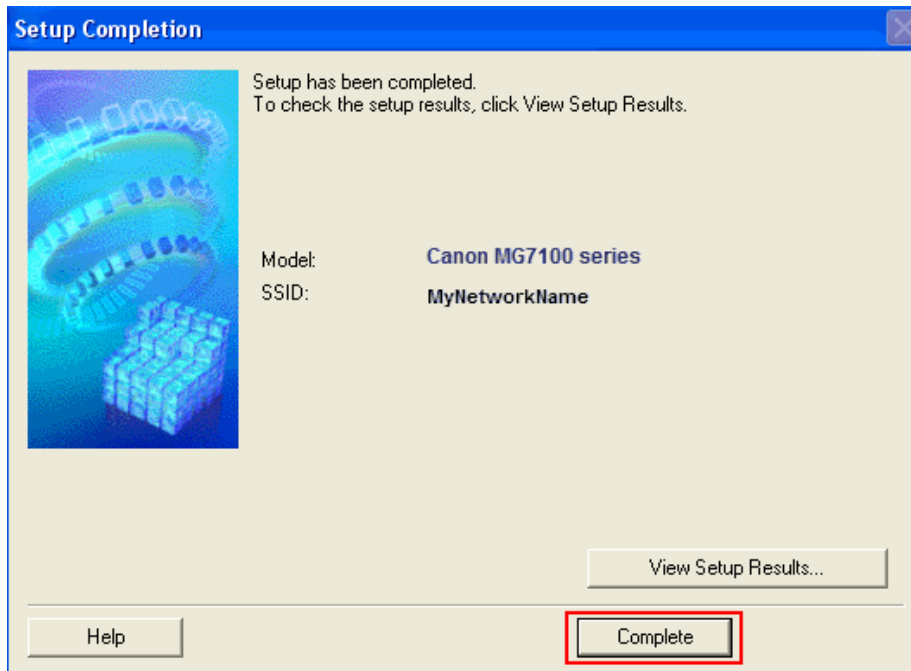
\***MP Drivers** is required and cannot be deselected. We recommend installing **My Image Garden** and **Quick Menu** to take full advantage of the printer's features. It is not necessary to re-install **My Image Garden** and **Quick Menu** if they were installed previously.



# Installing the Drivers & Software

Continue following on-screen instructions.

When the **Setup Completion** dialog box appears, click **Complete**.



At this point, setup of the printer and network is complete. Continue to follow any remaining on-screen instructions to finish and exit the setup program.