



**Getting Your Multifunction  
Back On Your Network  
After A Router Or Network Change**  
PIXMA MG7120

Mac OS

# Getting Your Multifunction Back On Your Network After A Router Or Network Change

PIXMA MG7120

Mac OS

<b>Preparing to Connect My Multifunction to My Network</b>	<b>3</b>
Network Requirements	3
Notes on Wireless Connection	4
<b>Installing the Drivers &amp; Software</b>	<b>5</b>

## Important

If any of the following situations exist

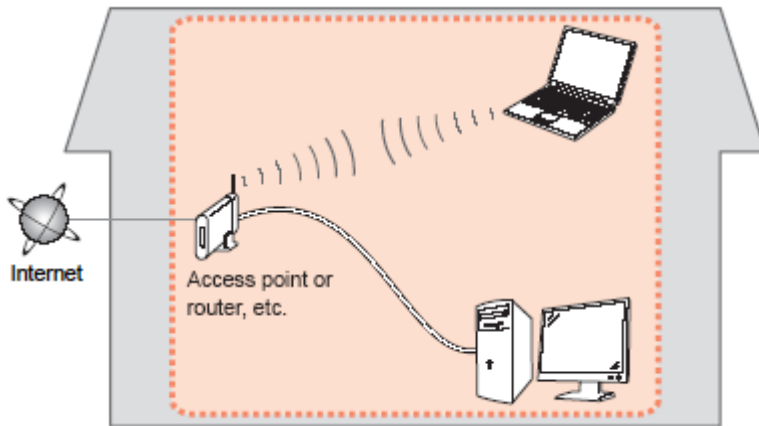
- You have replaced your Router or Access Point
- You want to use a different wireless network
- Router settings have been changed.

Please complete the following steps to apply the new configuration settings to your multifunction.

# Preparing to Connect My Multifunction To My Network

## Network Requirements

Before connecting the machine to the network, make sure that configuration of the computer and access point or router is complete, and that the computer is connected to the network.

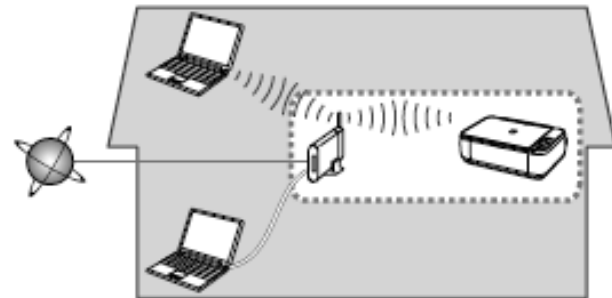
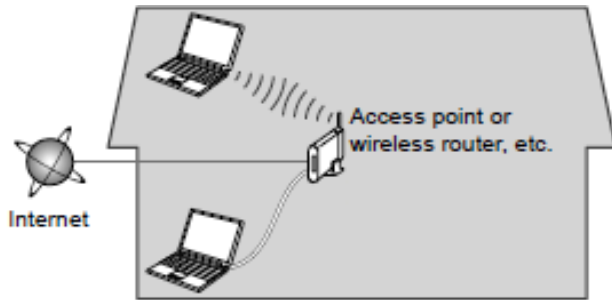


## Wireless Connection

Before connecting the machine to the network, the computer needs to be connected to the network. Make sure that configuration of the computer and access point or router is complete.

# Preparing to Connect My Multifunction To My Network

## To My Network



An "Ad-hoc connection," which establishes a direct connection to the computer over a wireless connection without using an access point, is not supported.

### Notes on Network Connection

- The configuration, router functions, setup procedures and security settings of the network device vary depending on your system environment. For details, refer to your device's instruction manual or contact its manufacturer.
- In an office setup, consult your network administrator
- If you connect to a network that is not protected with security measures, there is a risk of disclosing data such as your personal information to a third party.
- Place the machine and computer on the same network segment.

# Installing the Drivers & Software

## Software Installation

To use the machine by connecting it to a computer, software including the drivers needs to be copied (installed) to the computer's hard disk. Installation time varies depending on the computer environment or the number of application software to be installed.

### **IMPORTANT**

- Log on as the administrator (or a member of the Administrators group).
- Quit all running applications before installation.
- Do not switch users during the installation process.
- Internet connection may be required during the installation. Connection fees may apply. Consult the internet service provider.
- If the firewall function of your security software is turned on, a warning message may appear that Canon software is attempting to access the network. If such a warning message appears, set the security software to always allow access.

# Installing the Drivers & Software

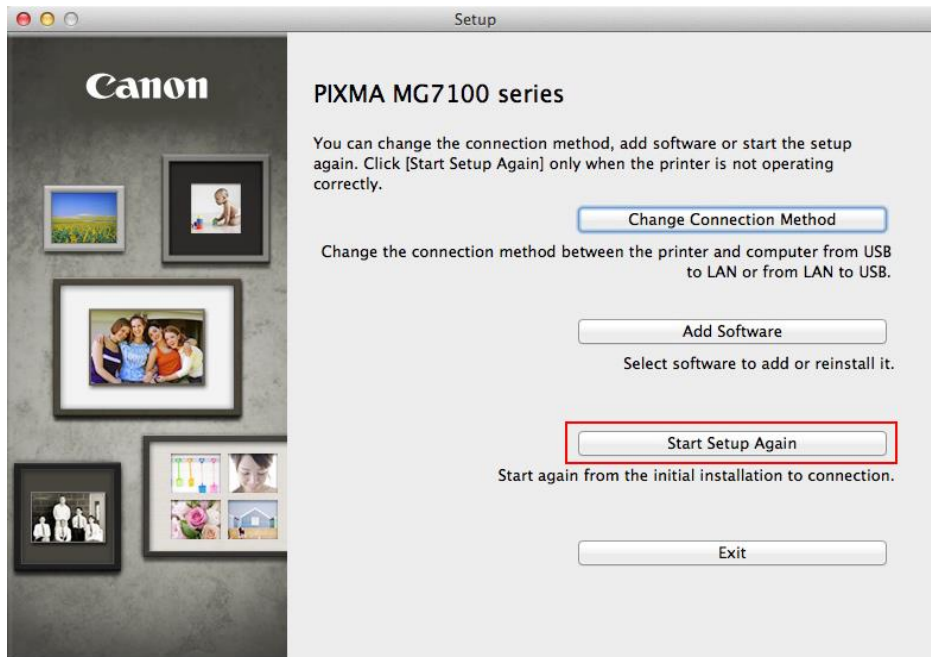
When you reinstall your printer on your network because of a router or network change, you follow the same procedure as for a first time install. A step-by-step walk through of the wireless setup is built into the installation routine of the software for your PIXMA.

To begin the reinstall of your PIXMA MG7120 to your wireless network, you must first download the software to your computer.

[Click here to download.](#)

After the file, mac-mg7100-1\_0-mcd.dmg , has downloaded successfully, double-click it to start the install procedure.

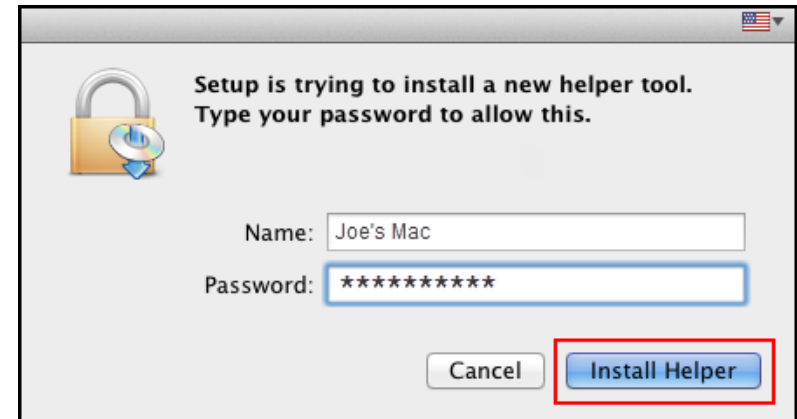
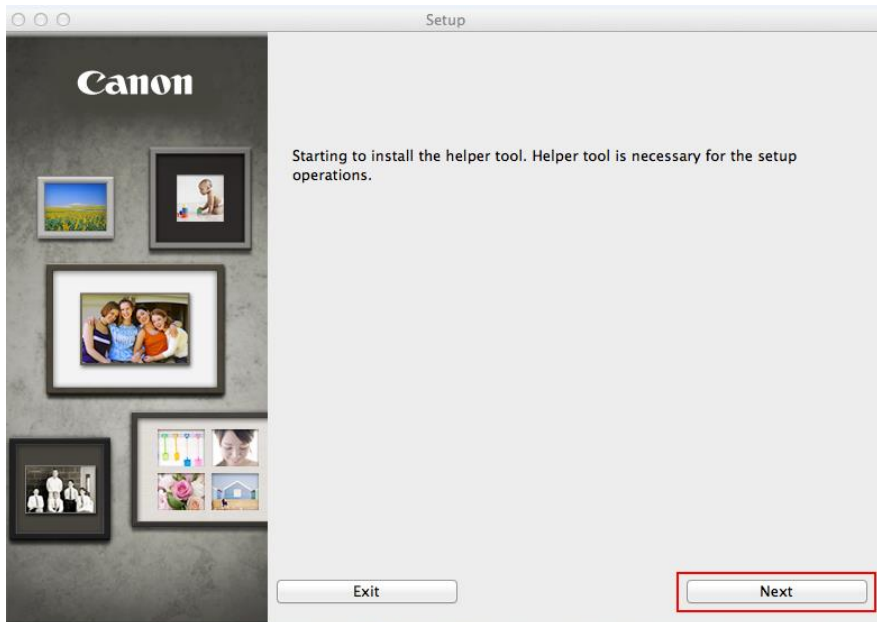
If the following screen appears, click **Start Setup Again**



# Installing the Drivers & Software

The setup instructions presented in this document describe the “**Cableless Setup**” method which does not require the need to know the SSID (network name), or network passphrase and does not require the printer to be temporarily connected to the computer with a USB cable.

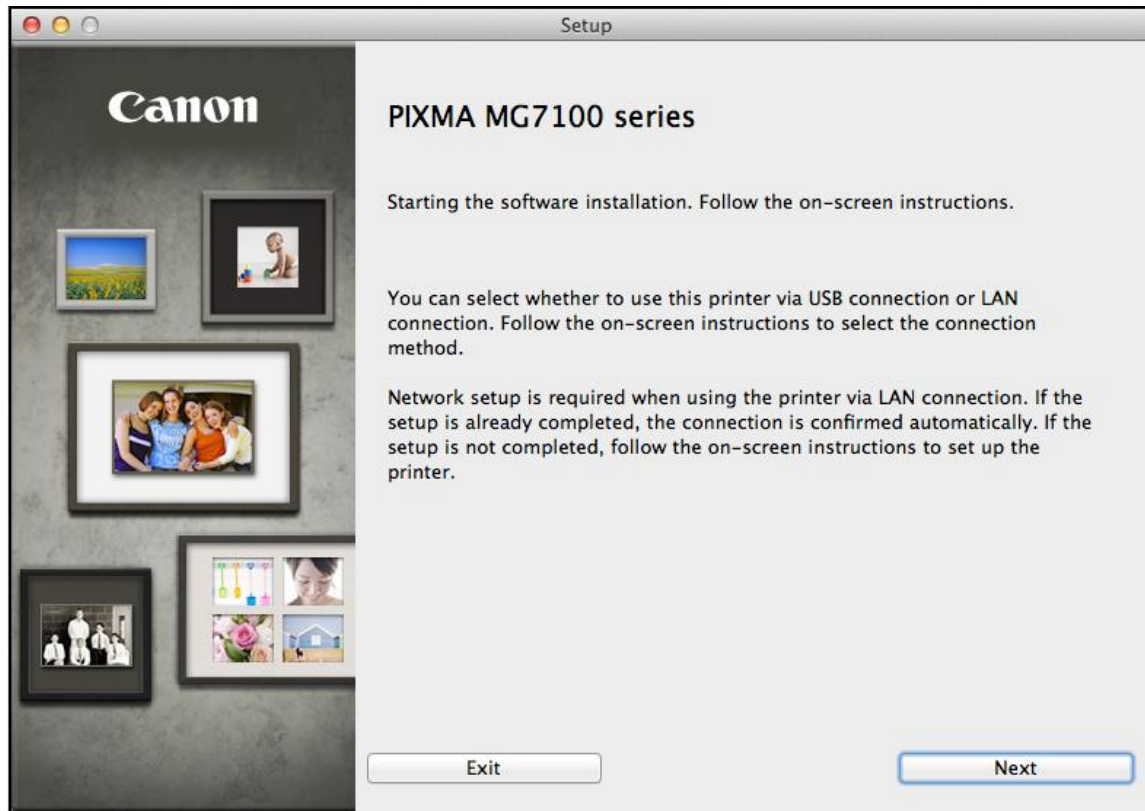
Click **Next** on the first screen. If prompted, enter the Administrative Password to continue.





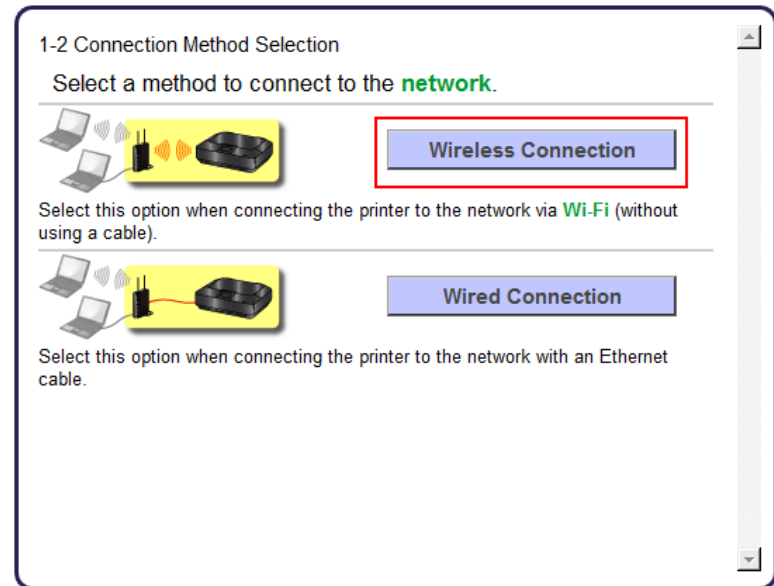
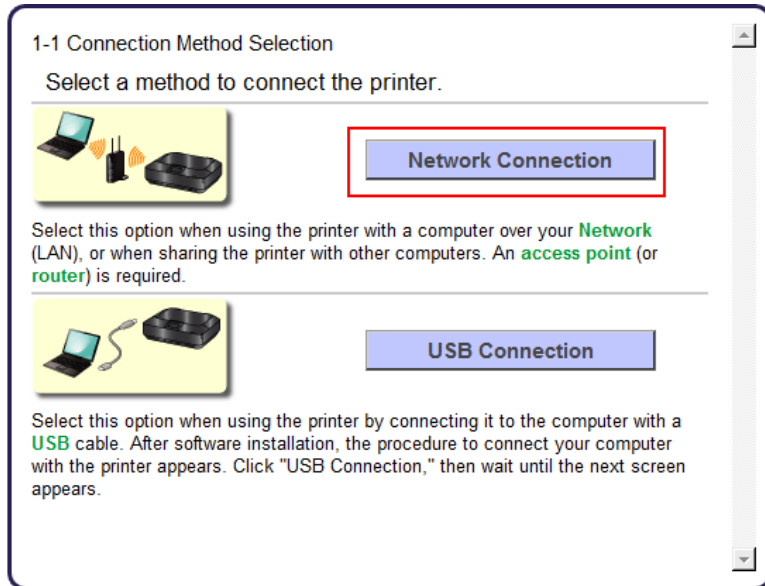
# Installing the Drivers & Software

Click **Next** on the following screen.



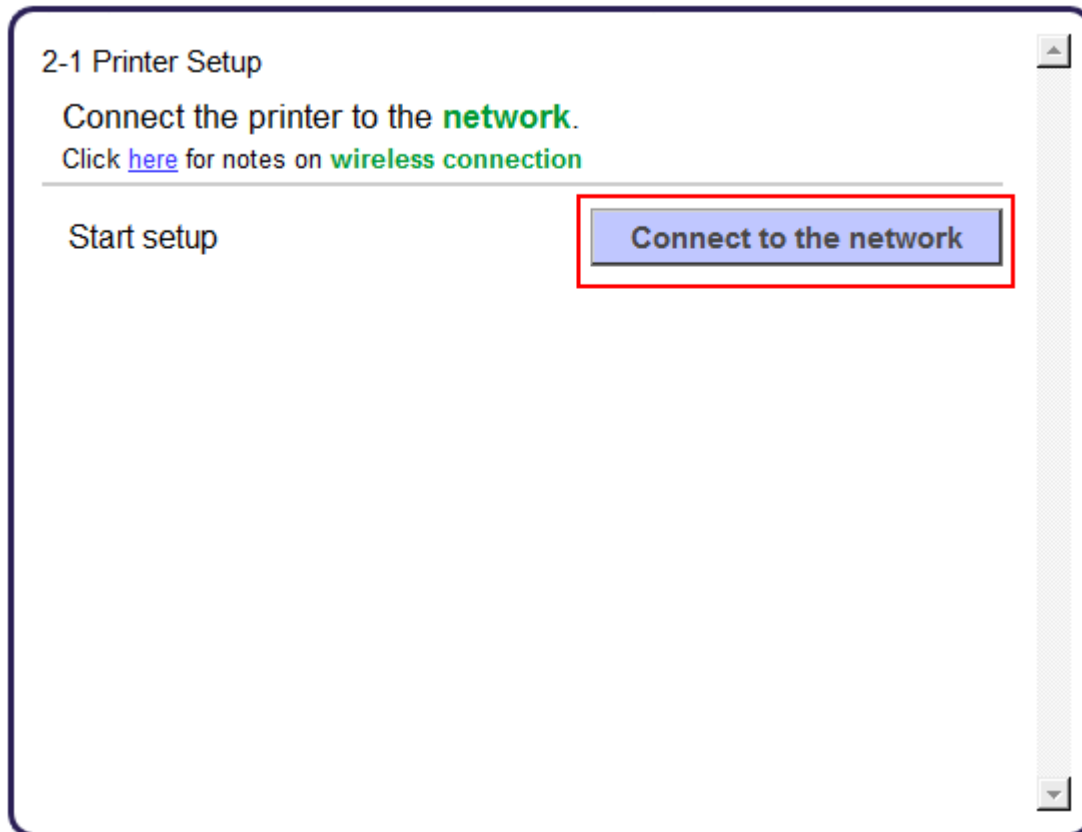
# Installing the Drivers & Software

On the **Connection Method Selection** screen (1-1) select **Network Connection**, then select **Wireless Connection** on screen (1-2).



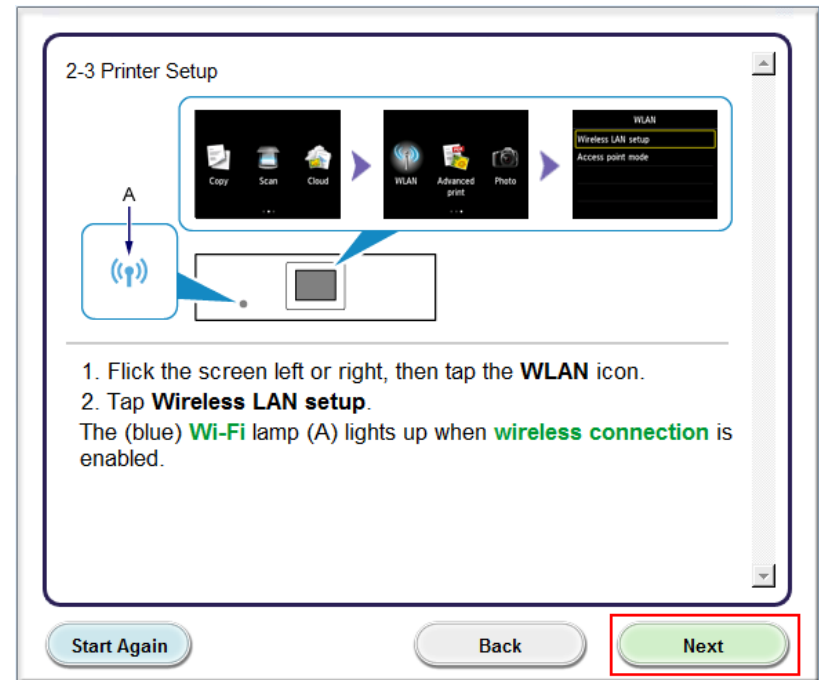
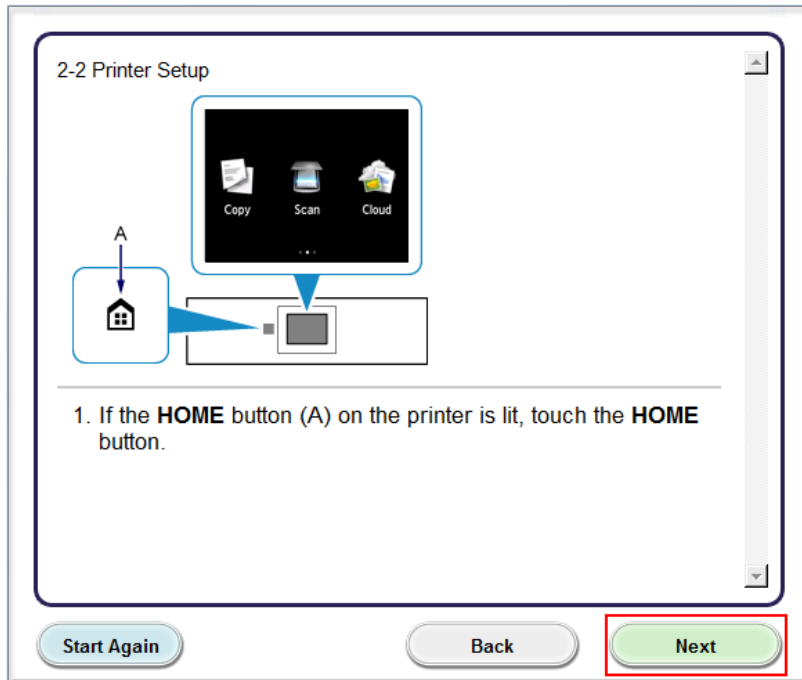
# Installing the Drivers & Software

Continue to follow on-screen instructions. Select **Connect to the network** on the **Printer Setup (2-1)** screen.



# Installing the Drivers & Software

Continue to follow on-screen instructions. If the **HOME** button is lit, touch the **HOME** button and click **Next**. Then, flick the screen left or right and tap the **WLAN** icon. Then tap **Wireless LAN setup**. Click **Next**.



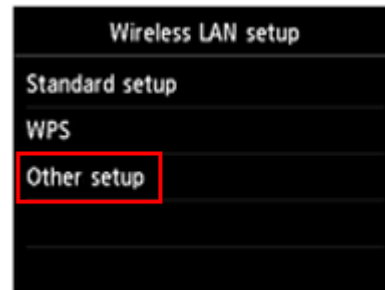
# Installing the Drivers & Software

If your printer's display is the same as example **A**, tap **To other connection methods**. The display will then change to the display example **B**.



**A**

When the display changes to **B** or was **B** to begin with, tap **Other setup**



**B**

# Installing the Drivers & Software


Click **Other Methods** on the **Setup Procedure Selection** screen (3-1).

3-1 Setup Procedure Selection

The printer will automatically search for compatible **access points**.

Click the method below that matches the screen displayed on your printer.

\* If the Push Button Method screen is displayed on the printer  
When you are unsure if your access point or **router** supports this technology, tap **To other connection methods**.  
When the printer screen changes from left to right, click [here](#)  
Proceed to the screen for Standard setup.

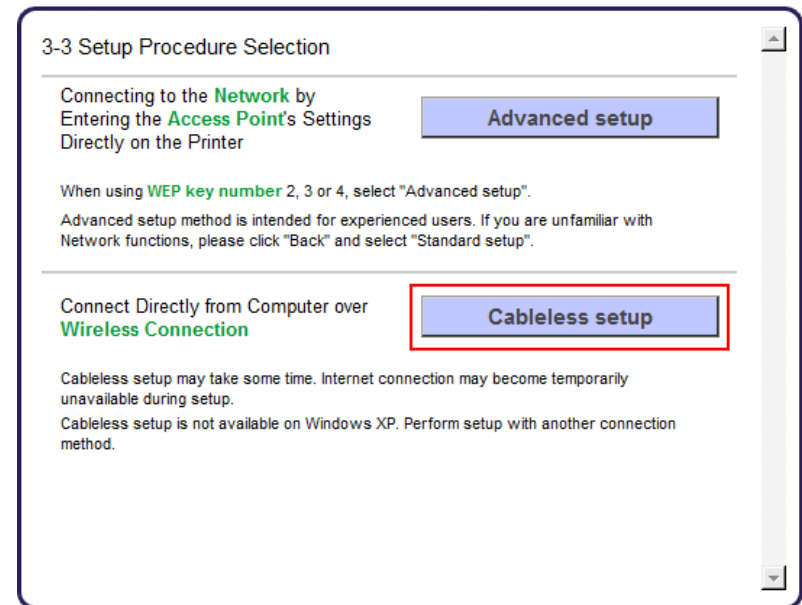
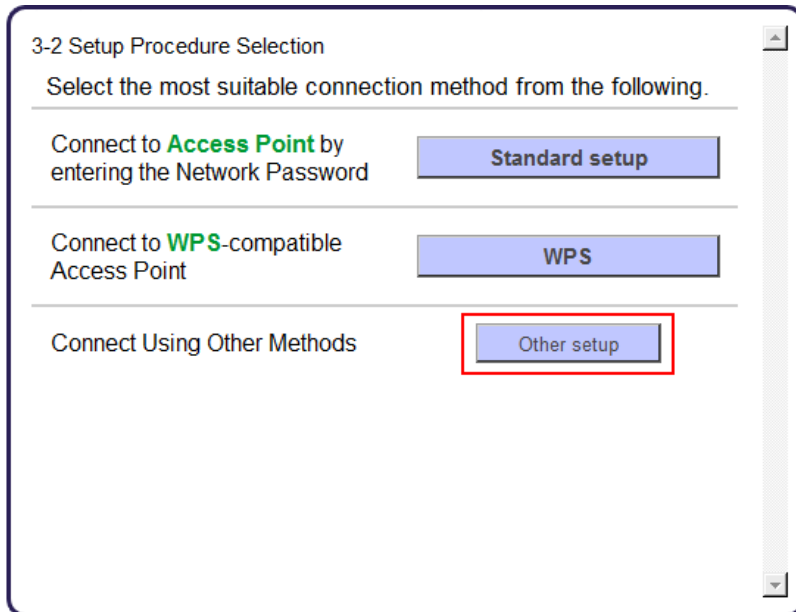


[Push Button Method](#)

[Other Methods](#)

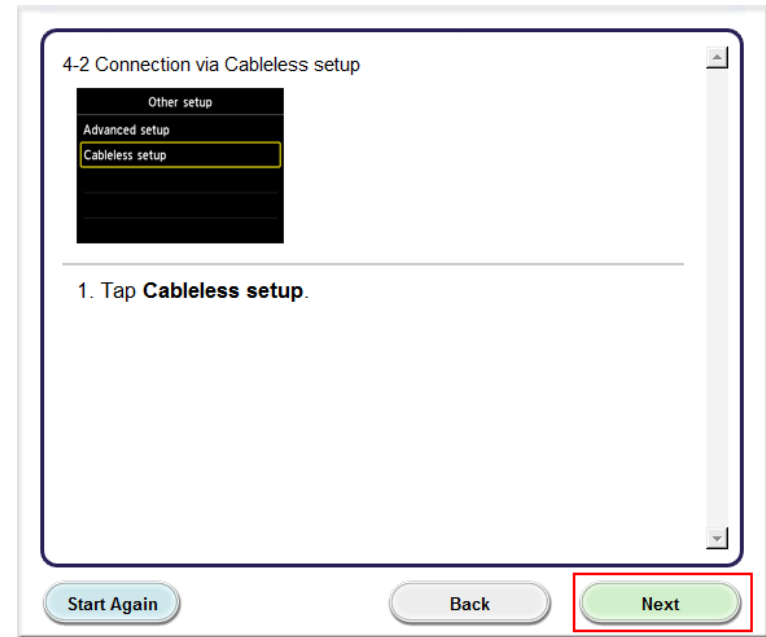
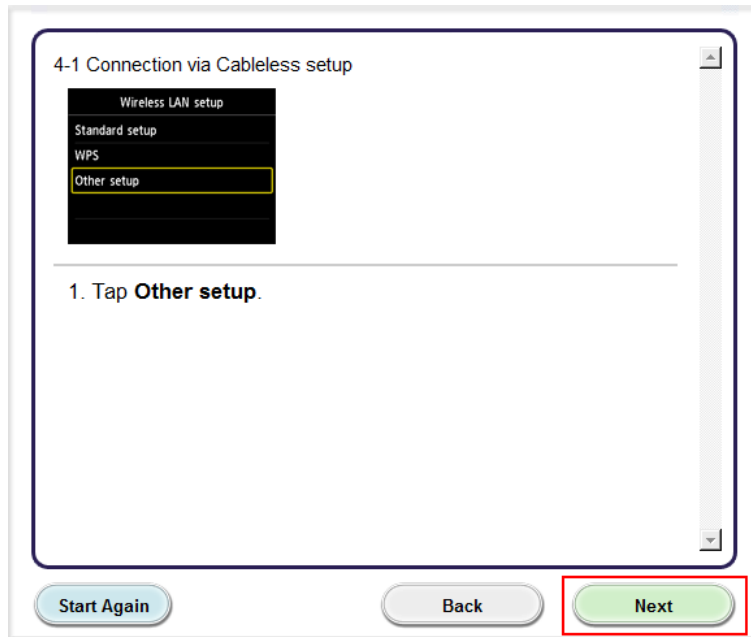
# Installing the Drivers & Software

On the **Setup Procedure Selection** screens (3-1) and (3-2), click **Other setup** on step (3-2) then **Cableless setup** on (3-3) .



# Installing the Drivers & Software

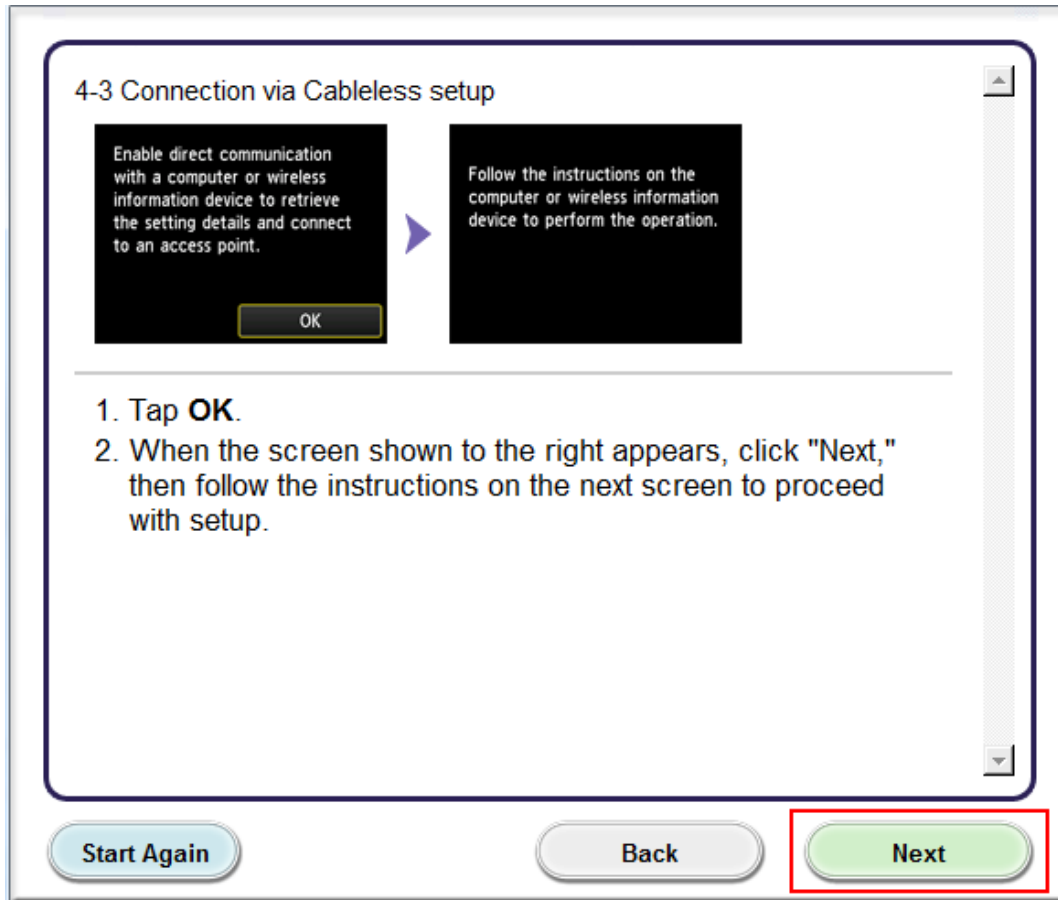
On the printer's touch-screen, tap **Other setup** then tap **Cableless setup**. Click **Next** on the on-screen instructions after each selection.





# Installing the Drivers & Software

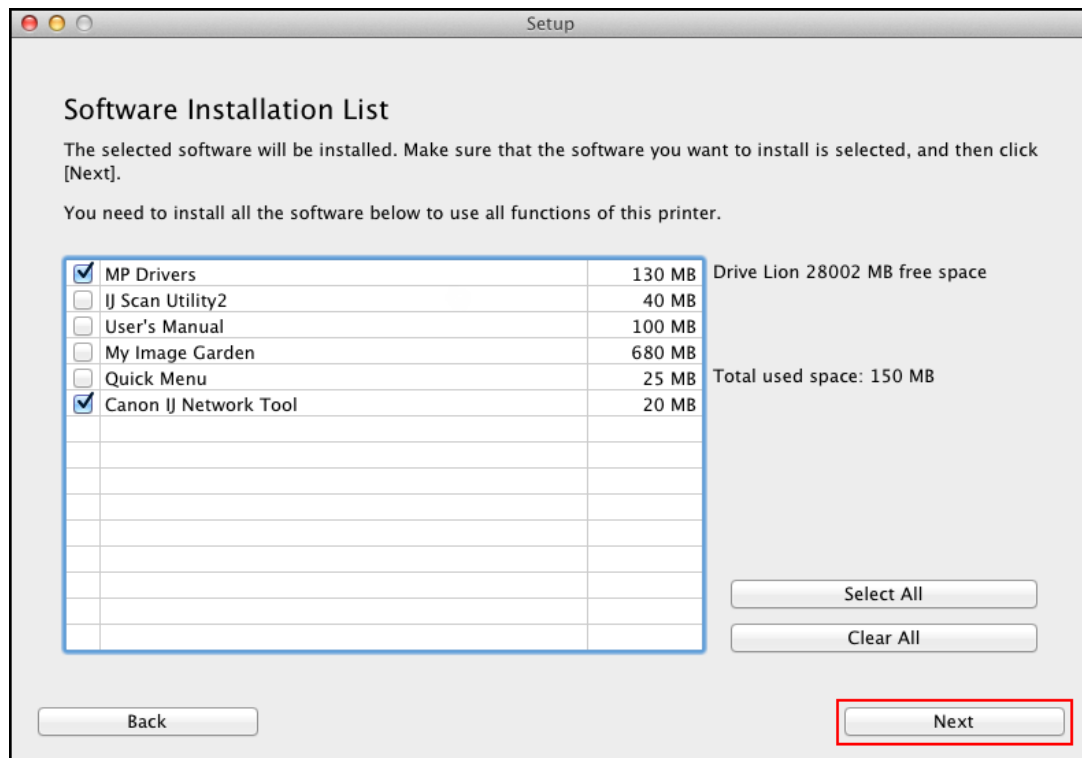
Tap **OK** on your printer's touch-screen. Click **Next** on the **Connection via Cableless setup** screen (4-3)



# Installing the Drivers & Software

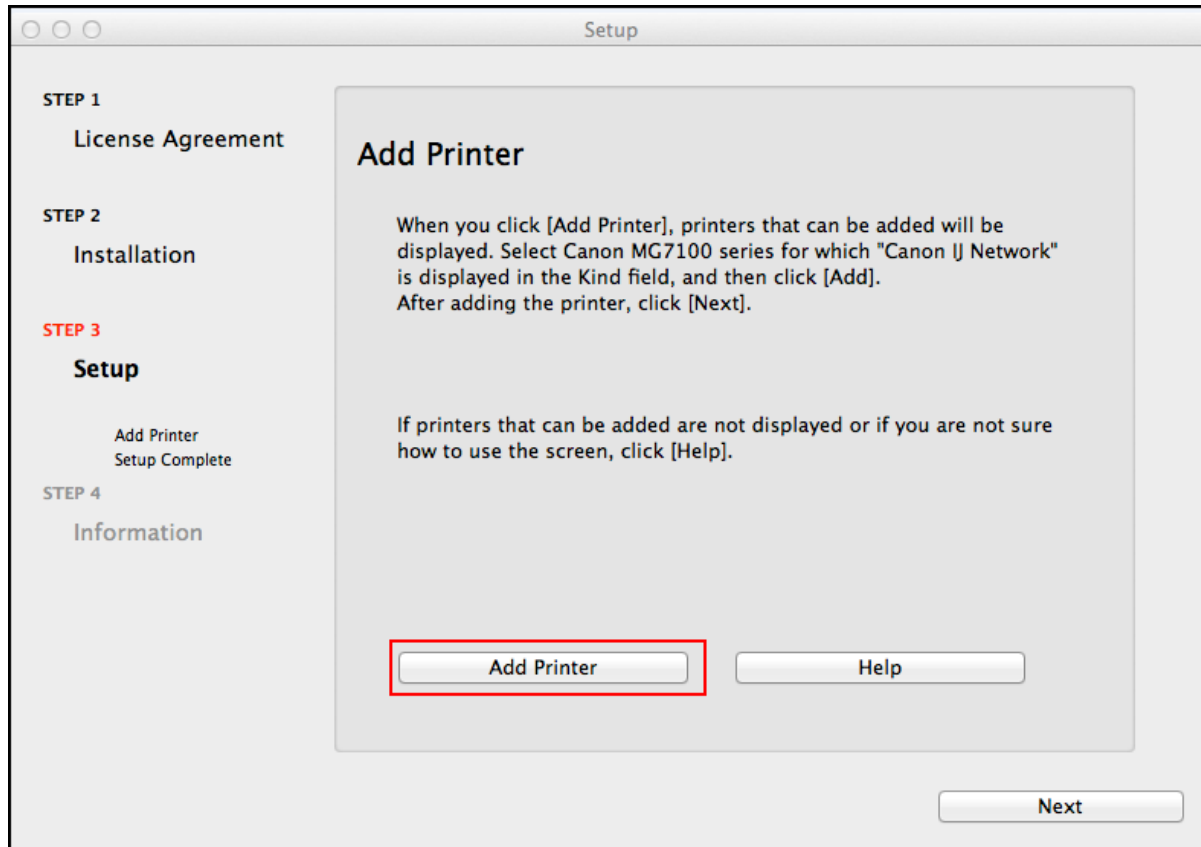
Continue following on-screen instructions. On the **Software Installation List**, select \*software to install and click **Next**.

\***MP Drivers** and **Canon IJ Network Tool** are required and cannot be deselected. We recommend installing **My Image Garden** and **Quick Menu** to take full advantage of the printer's features. It is not necessary to reinstall **My Image Garden** or **Quick Menu** if they were installed previously



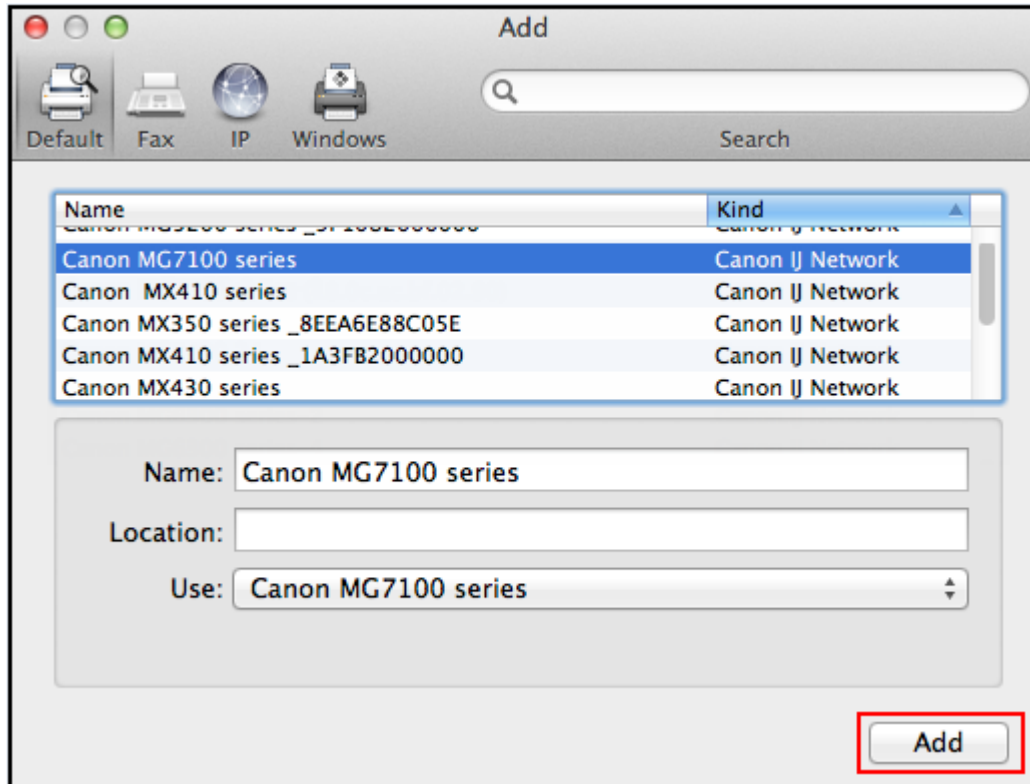
# Adding the Printer

Continue following the on-screen instructions.  
When the **Add Printer** screen appears, click **Add Printer**.



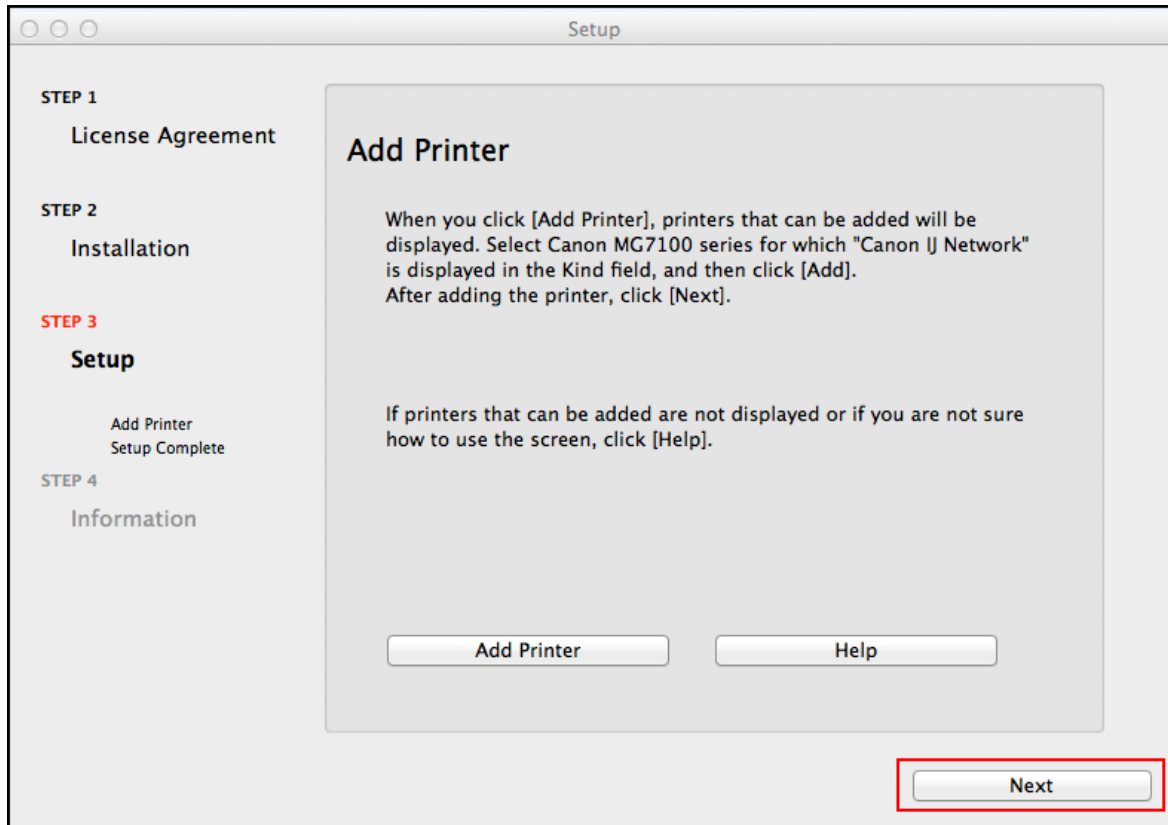
# Adding the Printer

Select the **Canon MG7100 series** with **Canon IJ Network** listed in the **Kind** column, then click **Add**.



# Adding the Printer

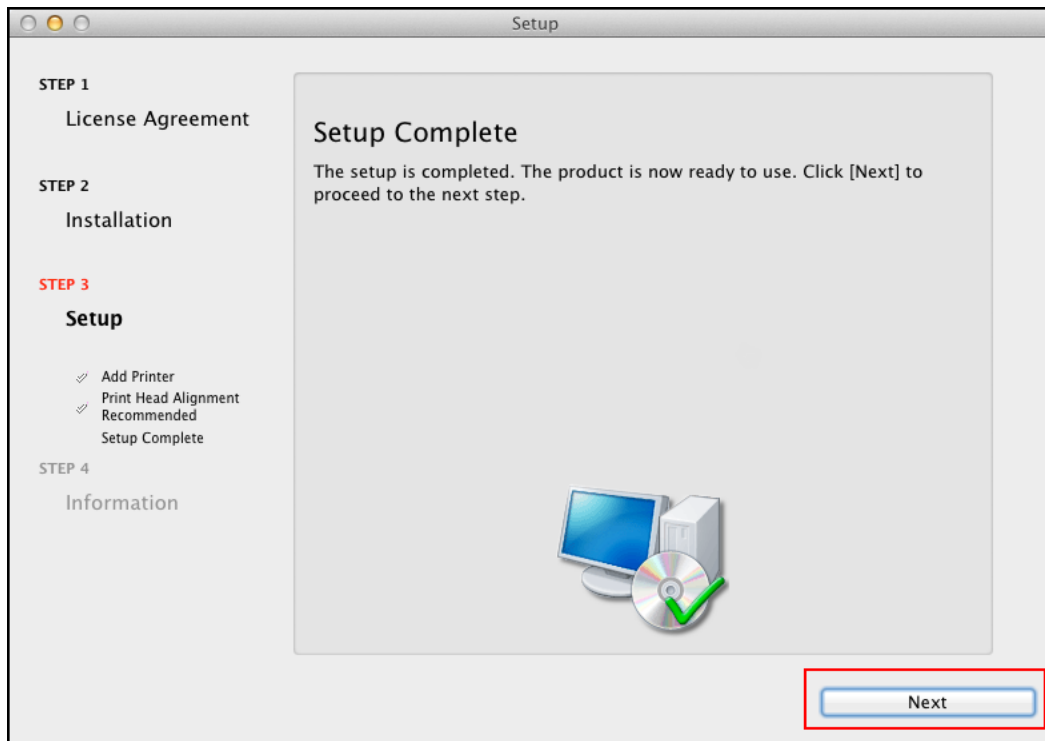
Click **Next** on the **Add Printer** screen



# Completing the Setup

Continue following on-screen instructions.

When the **Setup Complete** screen appears, click **Next**.



At this point, setup of the printer and network is complete. Continue to follow any remaining on-screen instructions to finish and exit the setup program.