



Getting Your Multifunction Back on the Network After a Router or Network Change

PIXMA MG5620

Mac OS

Information

Important

If any of the following situations exist

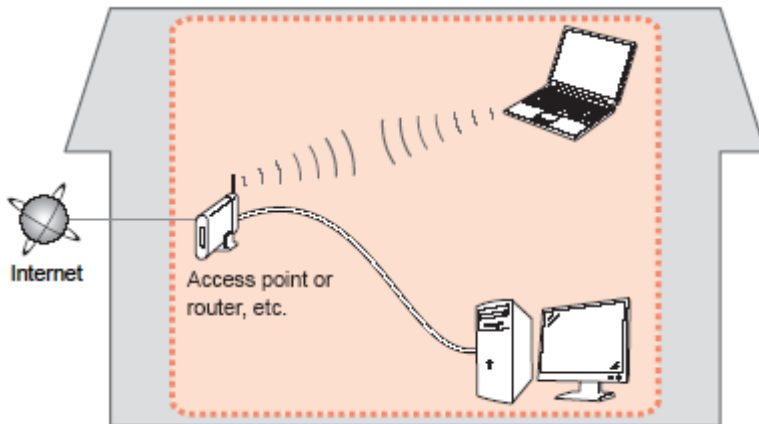
- You have replaced your Router or Access Point
- You want to use a different wireless network
- Router settings have been changed.

Please complete the following steps to apply the new configuration settings to your multifunction.

Preparing to Connect to the Network

Network Requirements

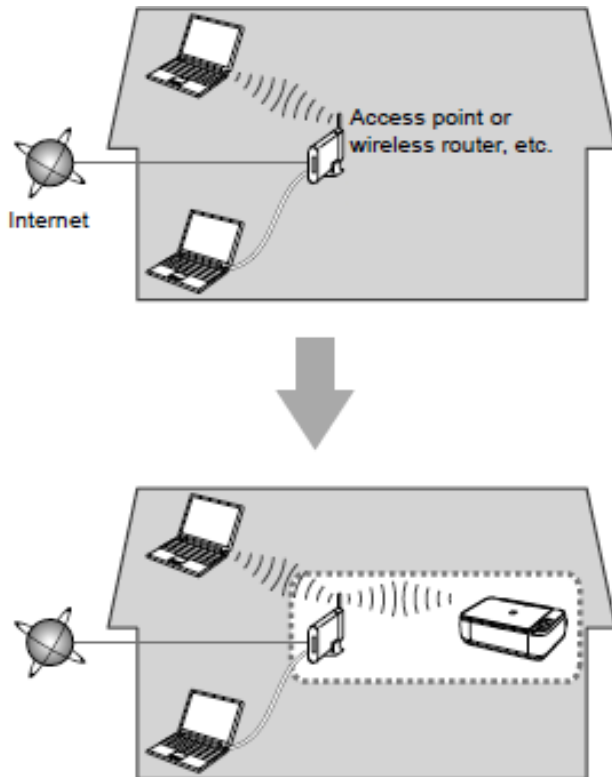
Before connecting the machine to the network, make sure that configuration of the computer and access point or router is complete, and that the computer is connected to the network.



Wireless Connection

Before connecting the machine to the network, the computer needs to be connected to the network. Make sure that configuration of the computer and access point or router is complete.

Preparing to Connect to the Network



Notes on Network Connection

- The configuration, router functions, setup procedures and security settings of the network device vary depending on your system environment. For details, refer to your device's instruction manual or contact its manufacturer.
- In an office setup, consult your network administrator
- If you connect to a network that is not protected with security measures, there is a risk of disclosing data such as your personal information to a third party.
- Place the machine and computer on the same network segment.

Setting up the Network Connection

Software Installation

To use the machine by connecting it to a computer, software including the drivers needs to be copied (installed) to the computer's hard disk. Installation time varies depending on the computer environment or the number of application software to be installed.

IMPORTANT

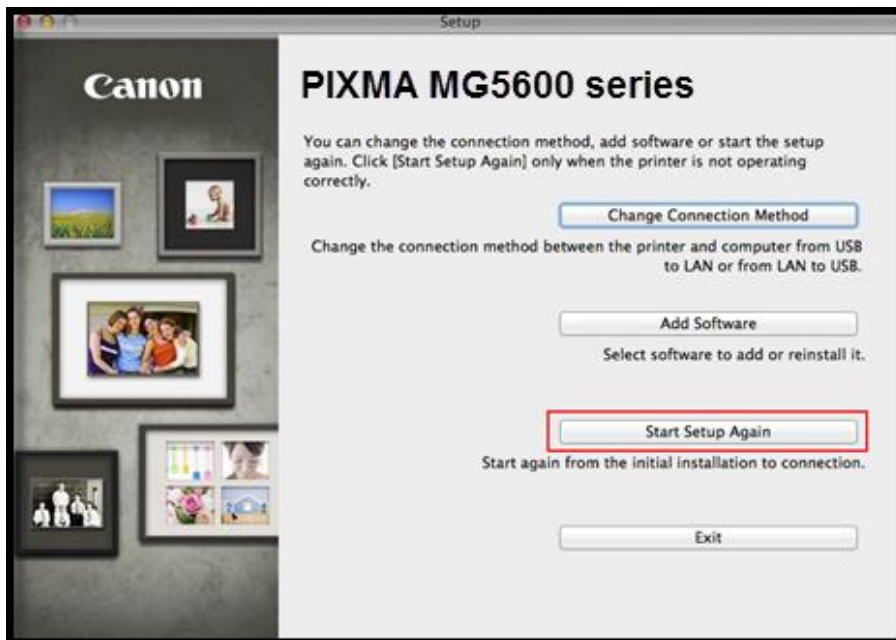
- Log on as the administrator (or a member of the Administrators group).
- Quit all running applications before installation.
- Do not switch users during the installation process.
- Internet connection may be required during the installation. Connection fees may apply. Consult the internet service provider.
- If the firewall function of your security software is turned on, a warning message may appear that Canon software is attempting to access the network. If such a warning message appears, set the security software to always allow access.

Setting up the Network Connection

When you reinstall your printer on your network because of a router or network change, you follow the same procedure as for a first time install. A step-by-step walk through of the wireless setup is built into the installation routine of the software for your PIXMA.

To begin the reinstall of your PIXMA MG5620 to your wireless network, you must first download the software to your computer.
[Click here to download.](#)

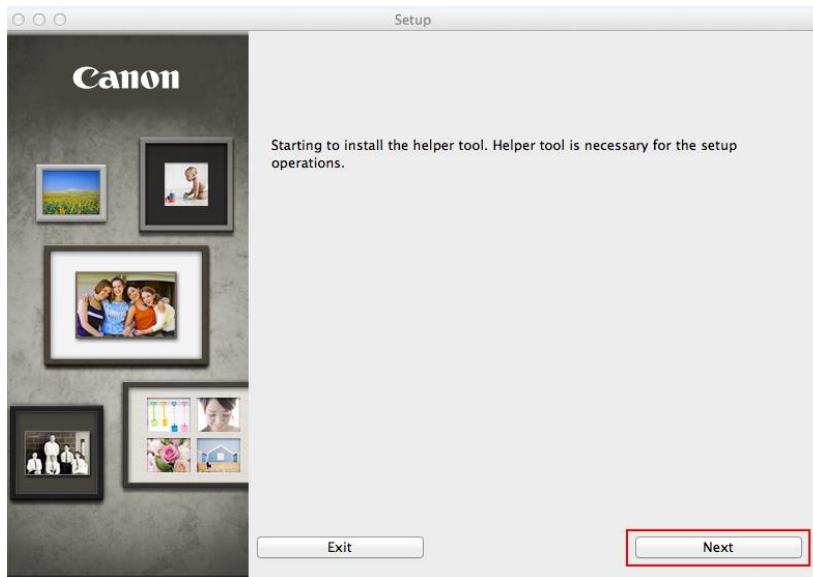
After the file, mac-mg5600-1_0-mcd.dmg , has downloaded successfully, double-click it to start the install procedure.
If the following screen appears, click **Start Setup Again**.



Setting up the Network Connection

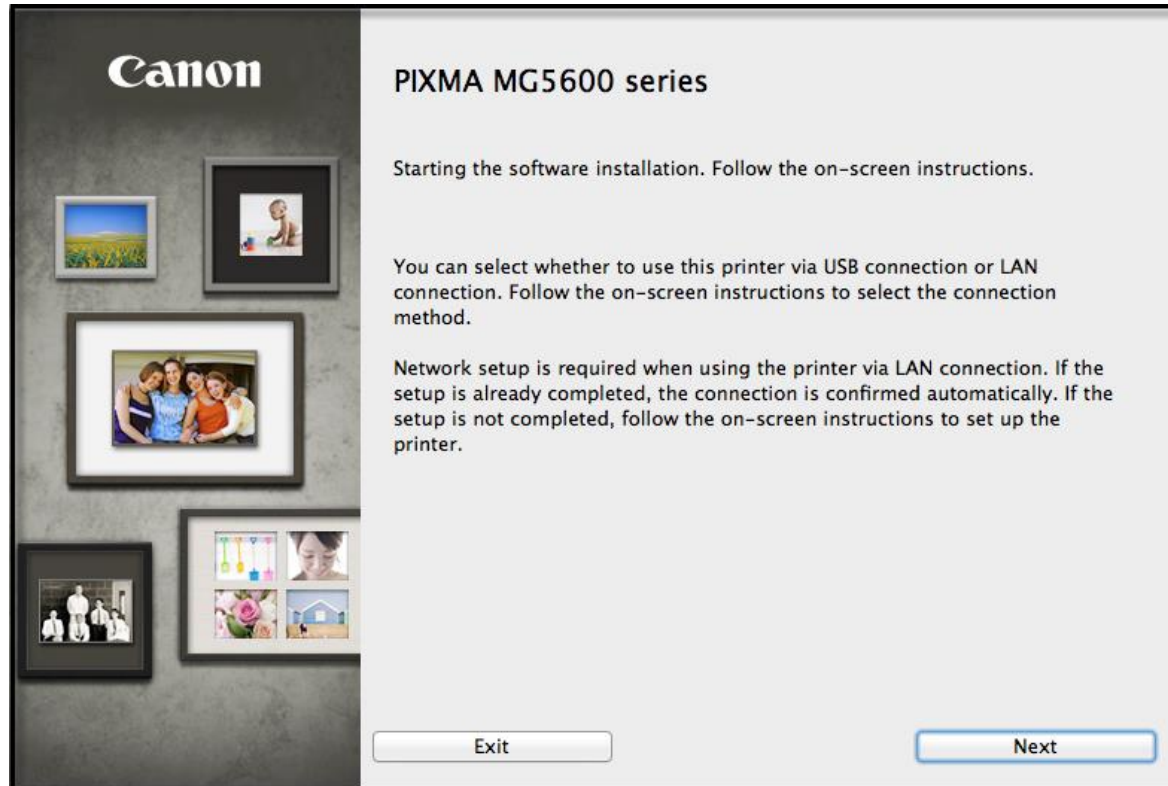
The setup instructions presented in this document describe the “**Cableless Setup**” method which does not require the need to know the Access Point (network name), or network password and does not require the printer to be temporarily connected to the computer with a USB cable.

Click **Next** on the first screen. If prompted, enter the Administrative Password to continue.



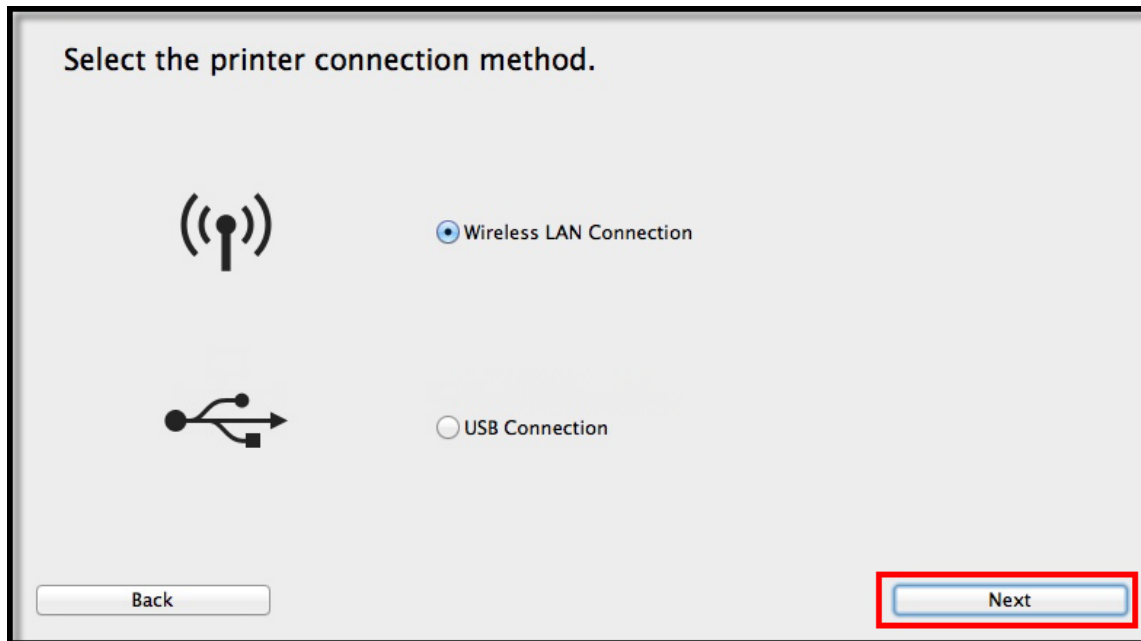
Setting up the Network Connection

Click **Next** on the following screen.



Setting up the Network Connection


Follow on-screen instructions. Select **Wireless LAN Connection** and click **Next** on the following screen.




Setting up the Network Connection

Follow on-screen instructions. Select **Access Point Connection** and click **Next** on the following screen.

Select the wireless LAN connection method.

☒ **Access Point Connection (recommended)**
Connect the computer and the printer via wireless LAN router.

☐ **Direct Connection**
Directly connect the computer and the printer.

To switch between Access Point Connection and Direct Connection or for more details on the connection method, click [Instructions].

Instructions

Back

Next

Setting up the Network Connection

Continue following on-screen instructions. On the **Printers on Network List**, check the **Setting printer could not be found on the list** checkbox and click **Next**.

Printers on Network List

Serial Number	MAC Address	IP Address

☒ Setting printer could not be found on the list

Update

1. To set a printer on the network, select one from the above printers list, and then click [Next].
Serial number can be found on the back of the printer or the Letter of Guarantee.

2. If the setting printer could not be found on the above list, turn on the printer and click [Update].

3. If the printer could not still be found, select [Setting printer could not be found on the list], and the click [Next].

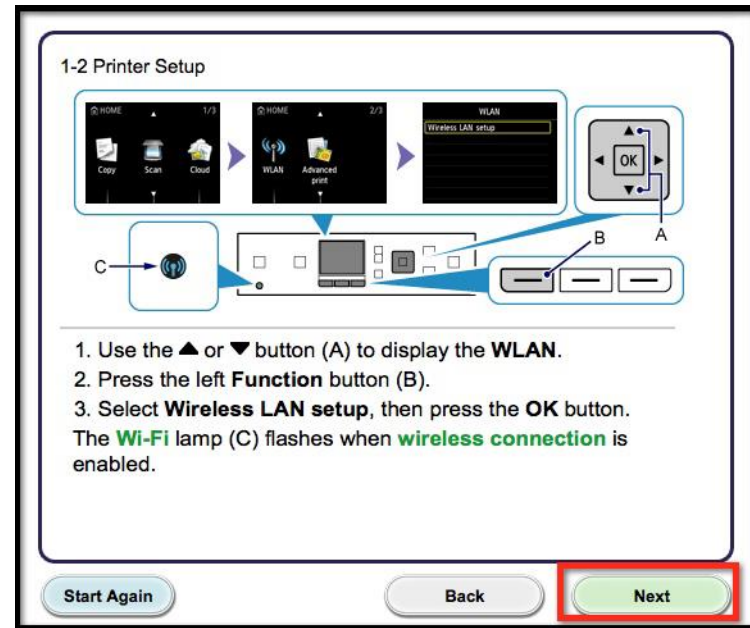
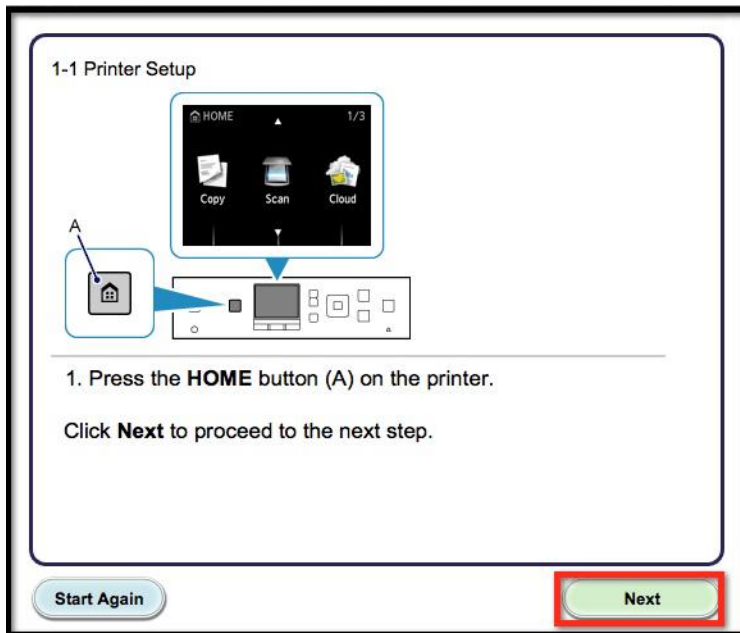
Back

Next

Setting up the Network Connection

Continue to follow on-screen instructions.

Follow the instructions on the **Printer Setup** screens (1-1 and 1-2) to select **Wireless LAN setup**.



Setting up the Network Connection

Continue to follow on-screen instructions.

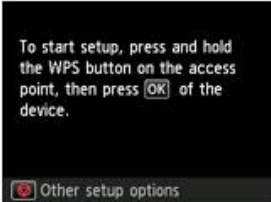
Select **Other Methods** on the **Setup Procedure Selection** screen (2-1).

2-1 Setup Procedure Selection


The printer will automatically search for compatible **access points**.

Click the method below that matches the screen displayed on your printer.

* If the Push Button Method screen is displayed on the printer
When you are unsure if your access point or **router** supports this technology, press the **Stop** button.
When the printer screen changes from left to right, click [here](#)
Proceed to the screen for Standard setup.



[Push Button Method](#)



[Other Methods](#)

***Note:** If your printer's display looks like the screen shown above **Push Button Method** in the **Setup Procedure Selection** screen (2-1), press the **Stop** button on the printer before proceeding to the next instruction

Setting up the Network Connection

Continue to follow on-screen instructions.

Select **Other setup** on the **Setup Procedure Selection** screen (2-2) and **Cableless setup** on the **Setup Procedure Selection** screen (2-3).

2-2 Setup Procedure Selection

Select the most suitable connection method from the following.

Connect to **Access Point** by entering the Network Password

When using **WEP key number** 2, 3 or 4, click **Other setup**, then select **Advanced setup**.

Connect to **WPS-compatible** Access Point

Connect Using Other Methods

2-3 Setup Procedure Selection

Connecting to the **Network** by Entering the **Access Point's** Settings Directly on the Printer

When using **WEP key number** 2, 3 or 4, select **Advanced setup**.
Advanced setup method is intended for experienced users. If you are unfamiliar with Network functions, please click **Back** and select **Standard setup**.

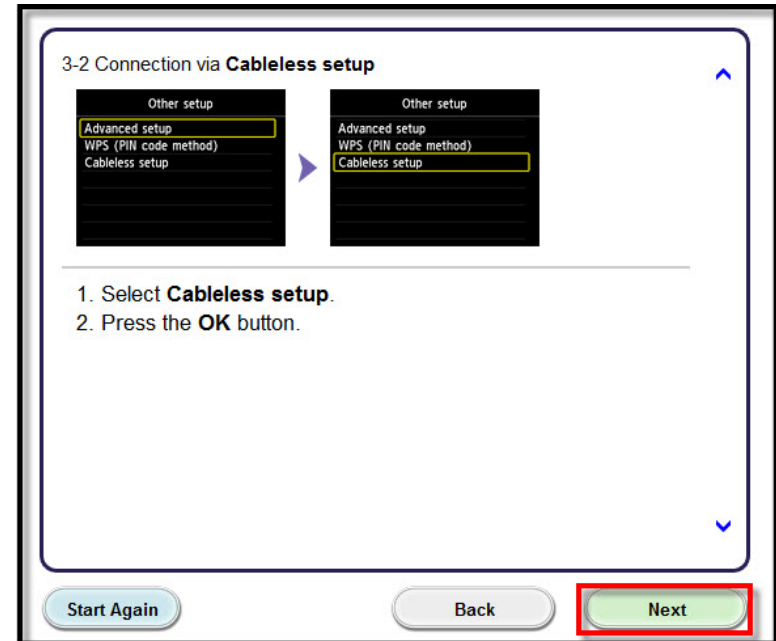
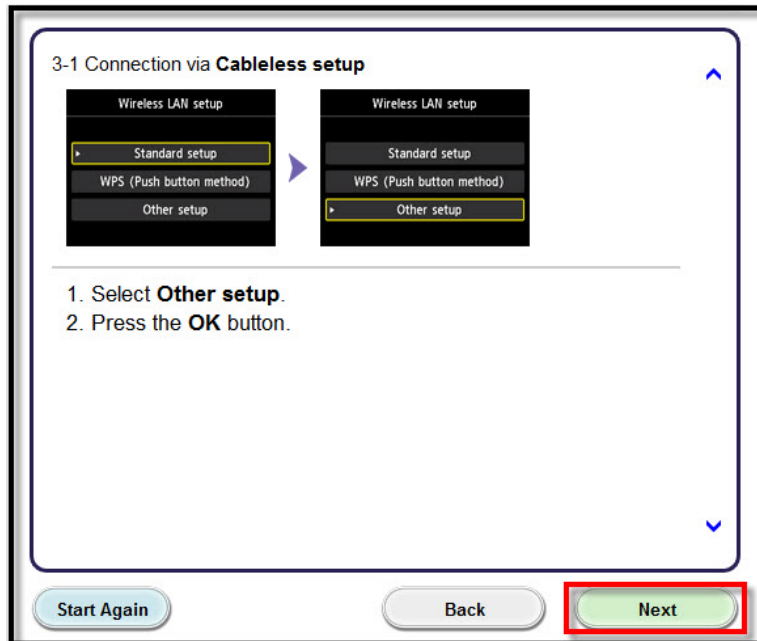
Setting the Access Point Information to the Printer Directly from Computer, without Operating the Access Point

Cableless setup may take some time. Internet connection may become temporarily unavailable during setup.

Setting up the Network Connection

Continue to follow on-screen instructions.

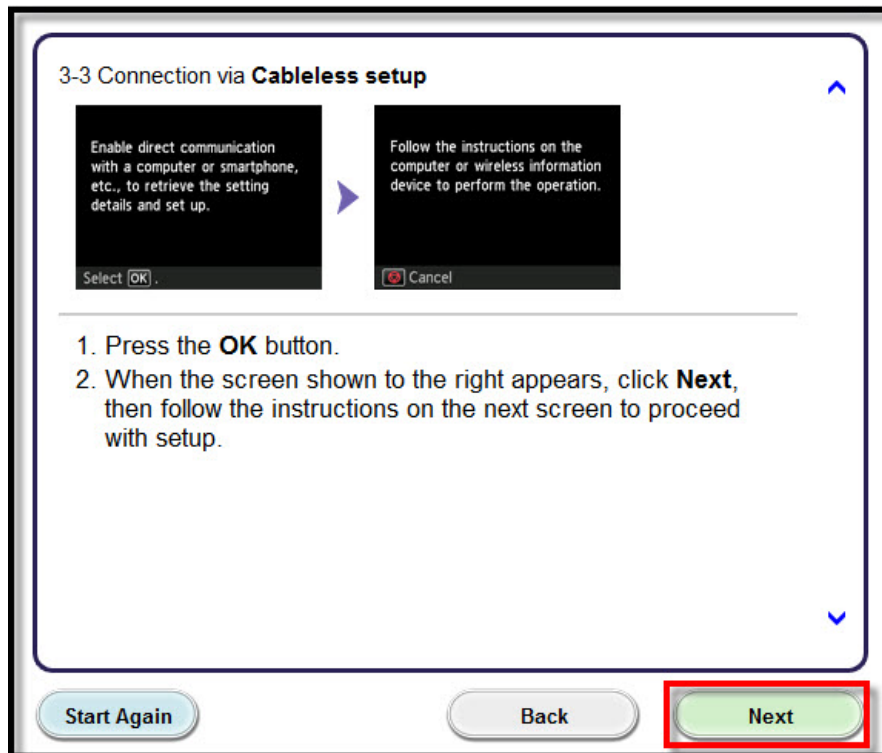
Select **Other setup** and **Cableless setup** on the **Connection via Cableless setup** screens (3-1 and 3-2).



Setting up the Network Connection

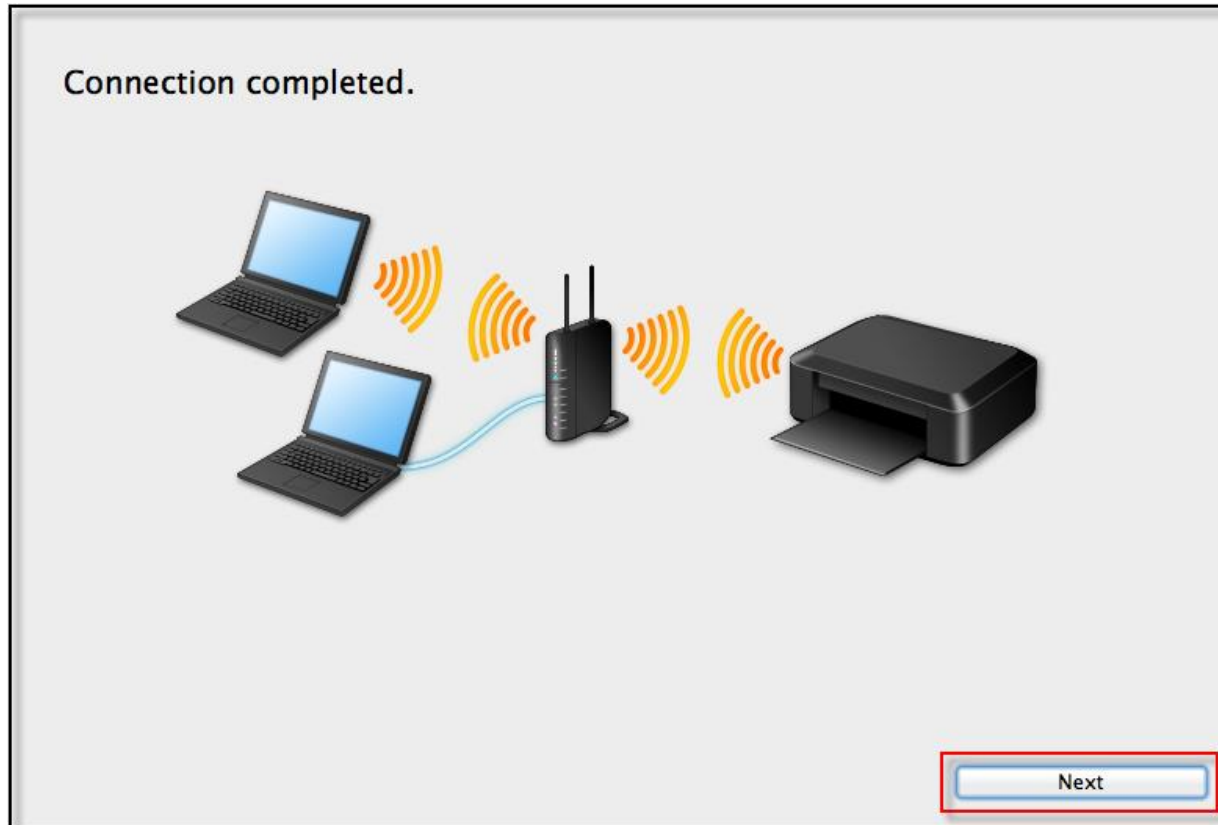
Continue to follow on-screen instructions.

Press the printer's **OK** button when “**Follow the instructions on the computer or Smartphone....**” appears, then click **Next** on the **Connection via Cableless setup** screen (3-3).



Setting up the Network Connection

Click **Next** on the **Connection Completed** screen.



Installing the Drivers & Software

Continue following on-screen instructions. On the **Software Installation List**, select *software to install and click **Next**.

***MP Drivers** and **Canon IJ Network Tool** are required and cannot be deselected. We recommend installing **My Image Garden**, **Quick Menu** and **IJ Scan Utility2** to take full advantage of the printer's features.

Software Installation List

The selected software will be installed. Make sure that the software you want to install is selected, and then click [Next].

You need to install all the software below to use all functions of this printer.

<input checked="" type="checkbox"/>	MP Drivers	115 MB
<input type="checkbox"/>	IJ Scan Utility2	40 MB
<input type="checkbox"/>	User's Manual	124 MB
<input type="checkbox"/>	My Image Garden	705 MB
<input type="checkbox"/>	Quick Menu	25 MB
<input checked="" type="checkbox"/>	Canon IJ Network Tool	20 MB
<input type="checkbox"/>		
<input type="checkbox"/>		
<input type="checkbox"/>		
<input type="checkbox"/>		
<input type="checkbox"/>		
<input type="checkbox"/>		
<input type="checkbox"/>		
<input type="checkbox"/>		

Drive Macintosh HD 967914 MB free space

Total used space: 207 MB

Select All

Clear All

Installation may take some time depending on your network environment.

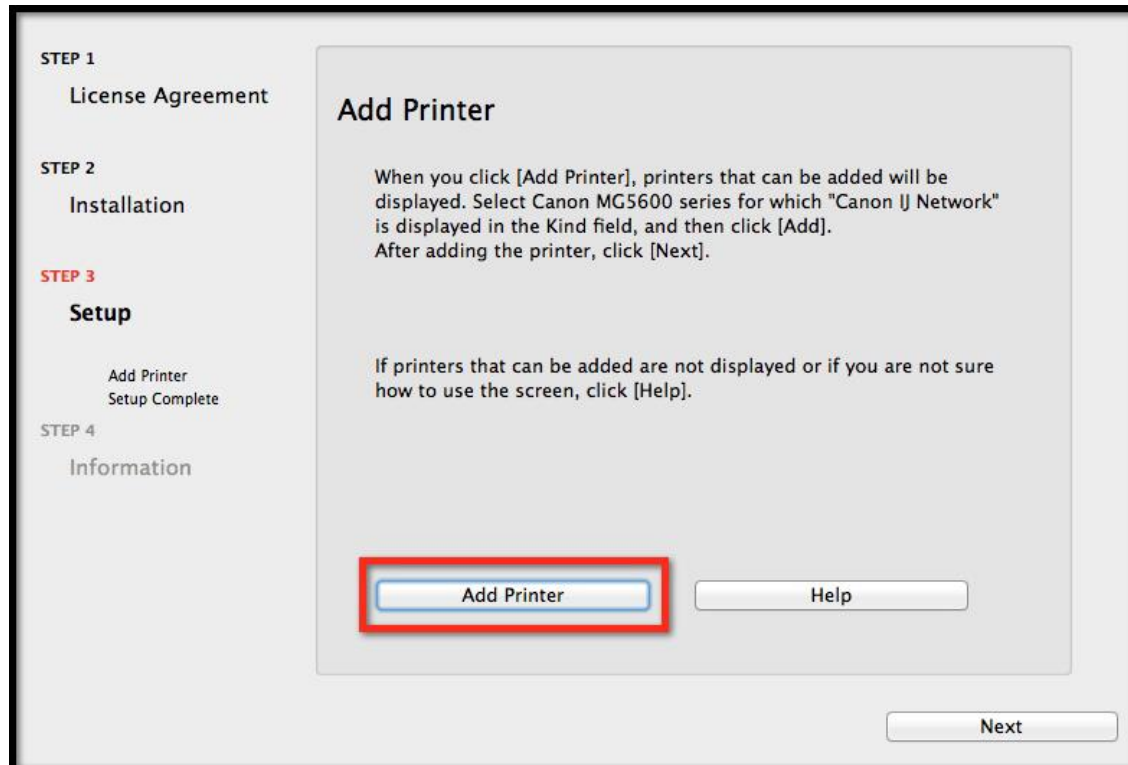
Back

Next

Adding the Printer

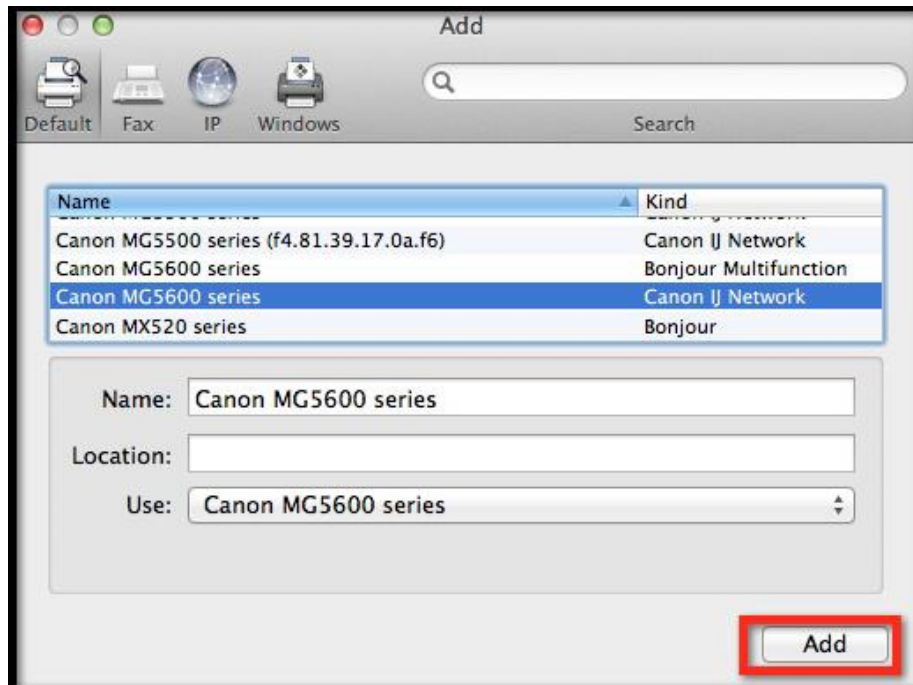
Continue following the on-screen instructions.

When the **Add Printer** screen appears, click **Add Printer**.



Adding the Printer

Select the **Canon MG5600 series** with **Canon IJ Network** listed in the **Kind** column, then click **Add**.



Adding the Printer

Click **Next** on the **Add Printer** screen.

The screenshot shows a software installation wizard window titled "Add Printer". On the left side, there is a vertical list of steps: "STEP 1 License Agreement", "STEP 2 Installation", "STEP 3 Setup", and "STEP 4 Information". Under "STEP 3 Setup", there are two sub-items: "Add Printer" and "Setup Complete". The "Add Printer" sub-item is currently selected. The main content area of the wizard contains the following text: "When you click [Add Printer], printers that can be added will be displayed. Select Canon MG5600 series for which 'Canon IJ Network' is displayed in the Kind field, and then click [Add]. After adding the printer, click [Next].". Below this text, there are two buttons: "Add Printer" and "Help". At the bottom right of the window, there is a "Next" button, which is highlighted with a red rectangular border. The "Add Printer" button is also highlighted with a blue rectangular border.

STEP 1
License Agreement

STEP 2
Installation

STEP 3
Setup

Add Printer
Setup Complete

STEP 4
Information

Add Printer

When you click [Add Printer], printers that can be added will be displayed. Select Canon MG5600 series for which "Canon IJ Network" is displayed in the Kind field, and then click [Add]. After adding the printer, click [Next].

If printers that can be added are not displayed or if you are not sure how to use the screen, click [Help].

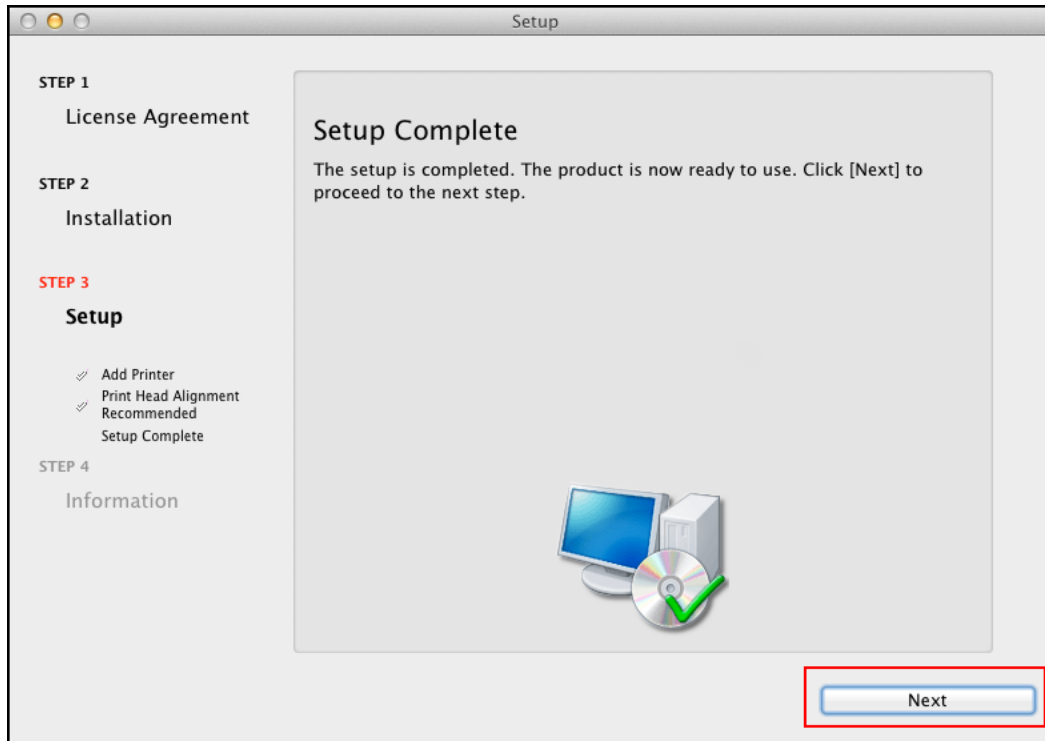
Add Printer Help

Next

Completing the Setup

Continue following on-screen instructions.

When the **Setup Complete** screen appears, click **Next**.



At this point, setup of the printer and network is complete. Continue to follow any remaining on-screen instructions to finish and exit the setup program.