

Obtaining Your Network Key

PIXMA MP495

Windows OS

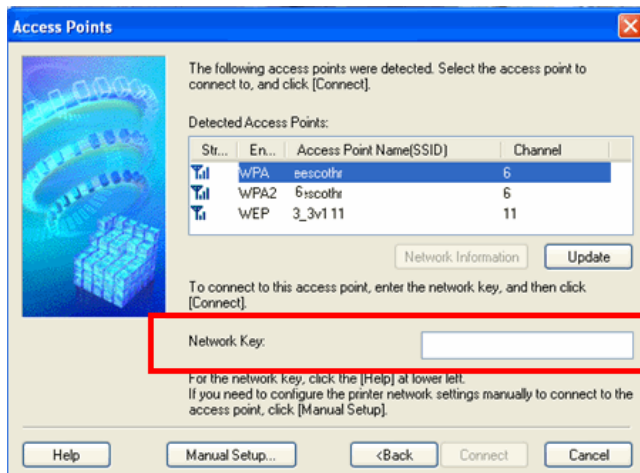
Obtaining Your Network Key

PIXMA MP495
Windows OS

Introduction	3
Download the Canon PIXMA Wireless Setup Assistant	4
Using the Canon PIXMA Wireless Setup Assistant	6
Troubleshooting	10

Introduction

If you are unable to proceed past the **Access Points** screen during wireless setup because the required Network Key is not known, you may be able to retrieve the information using the **Canon PIXMA Wireless Setup Assistant**.



NOTE: The Wireless Setup Assistant is supported on the following operating systems only:

- Windows XP SP3 or later
- Windows XP x64 Edition SP3 or later
- Vista (32 & 64 bit)
- Windows 7 (32 & 64 bit)

Download the Canon PIXMA Wireless Setup Assistant

[<< Previous](#)

[Next >>](#)

Download the Canon PIXMA Wireless Setup Assistant

To use the machine by connecting it to a computer, software including the drivers needs to be copied (installed) to the computer's hard disk. The installation process takes about 20 minutes. (The installation time varies depending on the computer environment or the number of applications to be installed.)

Step One

[Go to the Drivers & Software for your model](#)

Step Two

Select your operating system in the **Select OS** dropdown menu.

Drivers & Software

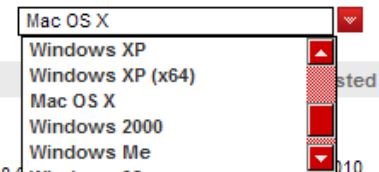
Choose an operating system from the drop down menu then select the appropriate drive from the list below

Choose Operating System:

Drivers

icaosx151m.dmg

ICA Driver Ver. 1.5.1m (Mac OS X 10.6)




Download the Canon PIXMA Wireless Setup Assistant

[<< Previous](#)[Next >>](#)

Step Three

In the **Software** section, click the Download icon link to download the file **CanonAPChkTool**.

▶ Drivers			
▼ Software			
File Description	Post Date	Size	Download
☑ Canon PIXMA Wireless Setup Assistant (Windows... File Name: CanonAPChkTool_win210en.exe	01/05/10	1.03MB	
Canon PIXMA Wireless Setup Assistant is a tool which enables you to confirm the access point name and network key required when setting up a wireless LAN connection.			

Step Four

On the next screen, read the information and instructions and click **I Agree - Begin Download**

Choose to "Save" the file. **Write down the file name and the location to where the file is being saved.**

Using the Canon PIXMA Wireless Setup Assistant

<< Previous

Next >>

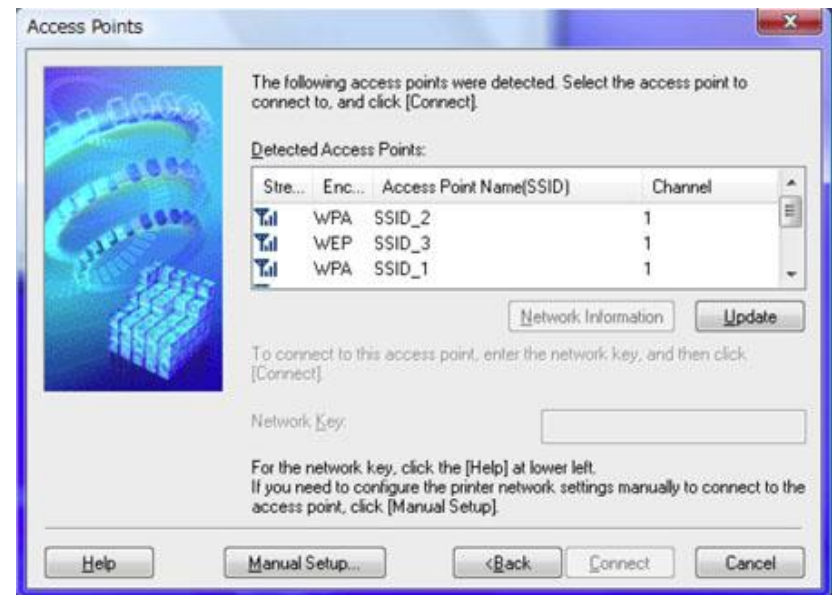
Using the Canon PIXMA Wireless Setup Assistant

Step One

Open the Access Points window.

If the Access Points window is closed:

1. If you are installing the latest driver from download, re-run the the driver/network installation by double-clicking the driver file you downloaded previously.
2. If you are installing from the CD-ROM, select Custom Install, printer driver / MP Drivers, and then perform the installation.



Using the Canon PIXMA Wireless Setup Assistant

[<< Previous](#)

[Next >>](#)

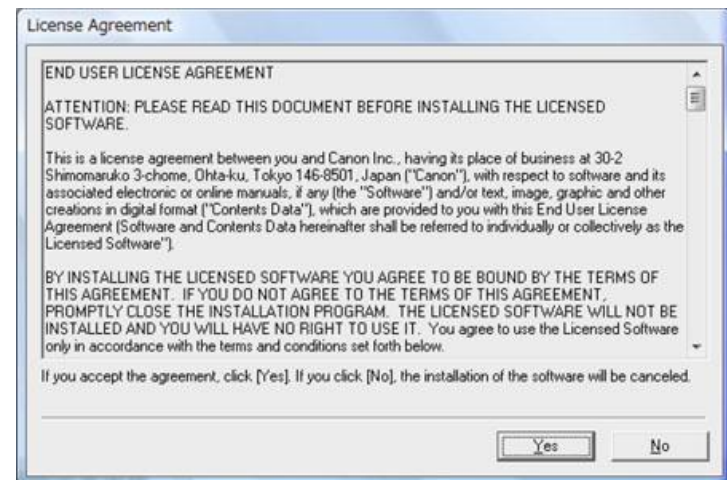
Step Two

Double-click the downloaded tool for confirming the Canon PIXMA Wireless Setup Assistant **CNMNPHLP**.



Step Three

Read the License Agreement, and then click **Yes** when you accept the agreement.



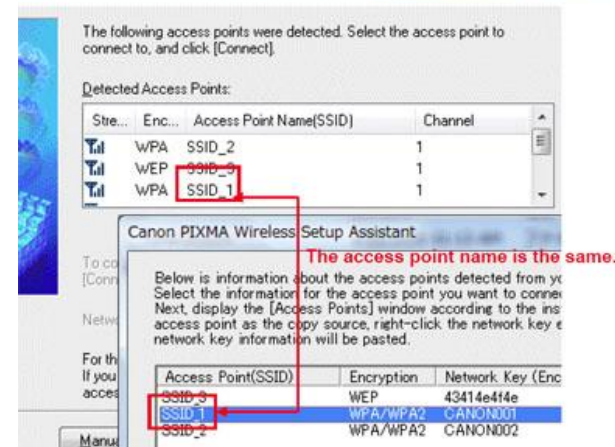
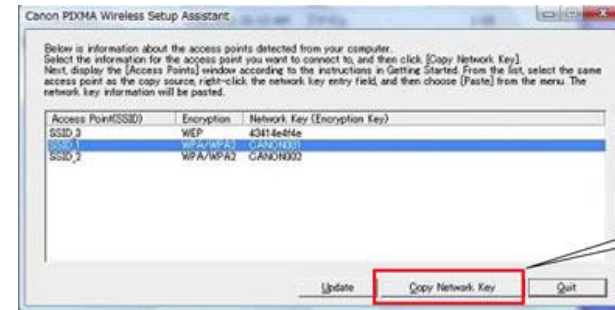
Using the Canon PIXMA Wireless Setup Assistant

<< Previous

Next >>

Step Four

1. The "Canon PIXMA Wireless Setup Assistant" tool is launched.
2. Confirm that the same access points are listed in the following window as the ones in the Access Points window ([Step One](#)).
3. Select the access point name that you are connecting to, and then click the "Copy Network Key."



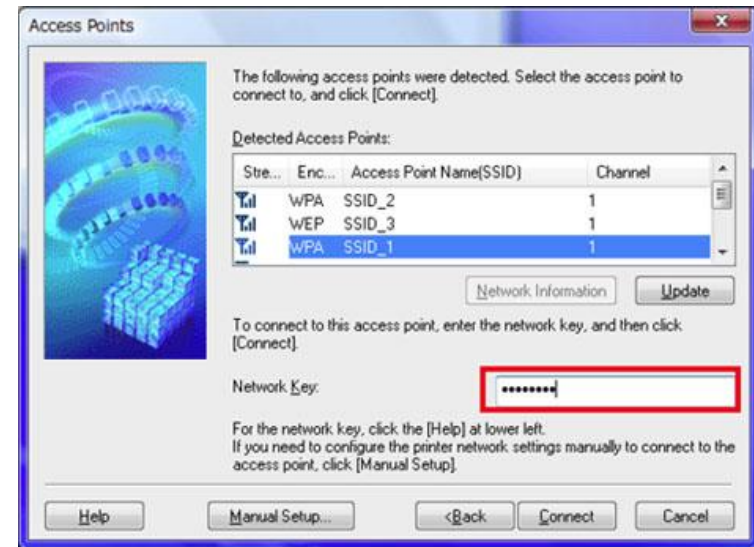
Using the Canon PIXMA Wireless Setup Assistant

<< Previous

Next >>

Step Five

1. Click the access point name(s) in the Access Point window (you will find the name(s) in "Detected Access Points" there).
2. Click the **Network Key input box**
3. Enter the network key by doing one of the following:
 - a. Right-click the mouse and select "Paste" from the drop down menu.
 - b. Or, while holding the "Ctrl" key, press the "V" key on your keyboard.
4. Click **Connect**. When access point names are the same, you can select any one of them. The tool "**Canon PIXMA Wireless Setup Assistant**" is launched.



<- Input box

Step Six

When the setup is completed, the Setup Complete dialog is displayed.

Troubleshooting

If either of the dialog boxes pictured below are displayed, the entered network key may not match with the access point you specified.

Click the **OK** or **Back** button to open the Access points window. Confirm the correct access point name and repeat Steps Four through Six.

