

Obtaining Your Network Key

PIXMA MP980 / PIXMA MX860 / PIXMA MP620

Windows OS

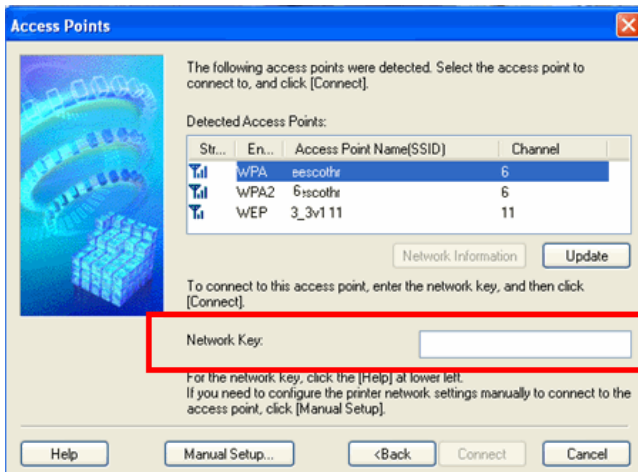
Obtaining Your Network Key

PIXMA MP980 / PIXMA MX860 / PIXMA MP620
Windows OS

Introduction	3
Download the Canon PIXMA Wireless Setup Assistant	4
Using the Canon PIXMA Wireless Setup Assistant	6
Trouble Shooting	10

Introduction

If you are unable to proceed past the **Access Points** screen during wireless setup because the required Network Key is not known, you may be able to retrieve the information using the **Canon PIXMA Wireless Setup Assistant**.



NOTE: The Wireless Setup Assistant is supported on the following operating systems only:

- Windows XP SP3 or later
- Windows XP x64 Edition SP3 or later
- Vista (32 & 64 bit)
- Windows 7 (32 & 64 bit)

Download the Canon PIXMA Wireless Setup Assistant

[<< Previous](#)

[Next >>](#)

Download the Canon PIXMA Wireless Setup Assistant

To use the machine by connecting it to a computer, software including the drivers needs to be copied (installed) to the computer's hard disk. The installation process takes about 20 minutes. (The installation time varies depending on the computer environment or the number of applications to be installed.)

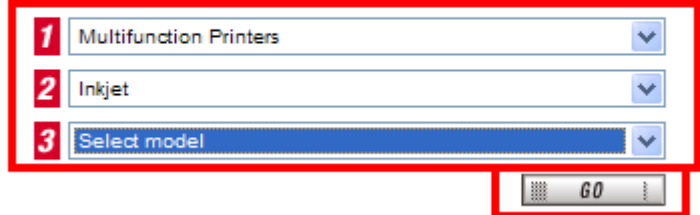
Step One

Go to the Canon USA Download Library
[Click here to go to the Canon USA download library](#)

Step Two

Select **Multifunction Printers** in the first menu dropdown, **Inkjet** in the second and your model in the third. Click **Go**.

PRODUCT MENU
Please choose the model from the dropdown menus below:



The screenshot shows a web interface with three dropdown menus and a 'GO' button. The first dropdown menu is labeled '1' and contains 'Multifunction Printers'. The second dropdown menu is labeled '2' and contains 'Inkjet'. The third dropdown menu is labeled '3' and contains 'Select model'. The 'GO' button is located below the dropdown menus. A red box highlights the three dropdown menus and the 'GO' button.

1	Multifunction Printers	▼
2	Inkjet	▼
3	Select model	▼

GO

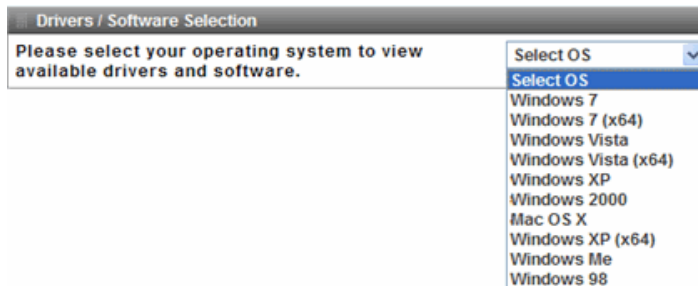
Download the Canon PIXMA Wireless Setup Assistant

[<< Previous](#)

[Next >>](#)

Step Three

In the **Drivers / Software Selection** section, select your operating system in the **Select OS** dropdown menu.



Step Four

In the **Software** section, click the link to download the file **CanonAPChkTool**.



Step Five

On the next screen, read the information and instructions and click **I Agree - Begin Download**

Choose to "Save" the file. **Write down the file name and the location to where the file is being saved.**

Using the Canon PIXMA Wireless Setup Assistant

<< Previous

Next >>

Using the Canon PIXMA Wireless Setup Assistant

Step One

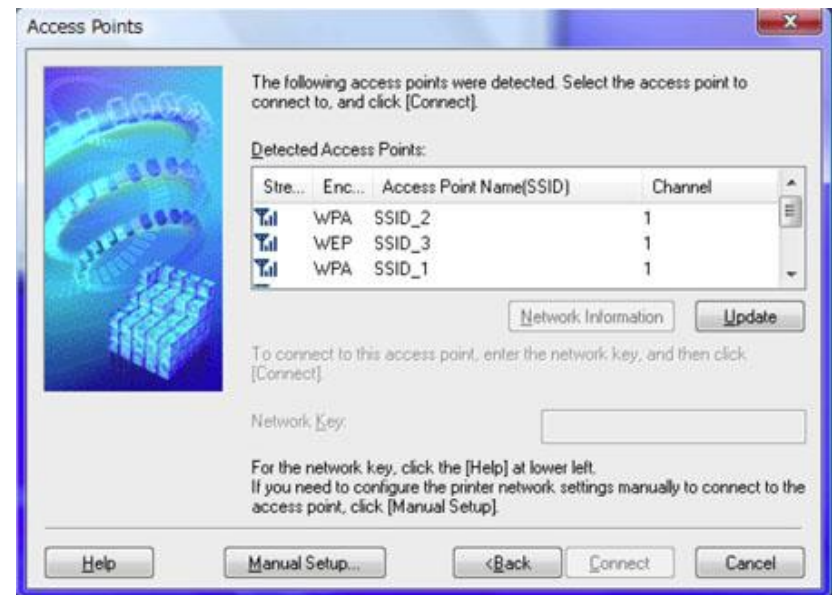
Open the Access Points window.

If the Access Points window is closed:

1. If you are installing the latest driver from download, re-run the the driver/network installation by double-clicking the driver file you downloaded previously.
2. If you are installing from the CD-ROM, select Custom Install, printer driver / MP Drivers, and then perform the installation.

Note:

Leave this window open on your desktop and proceed to step two.



Using the Canon PIXMA Wireless Setup Assistant

[<< Previous](#)

[Next >>](#)

Step Two

Double-click the downloaded tool for confirming the Canon PIXMA Wireless Setup Assistant **CNMNPHLP**.



Step Three

Read the License Agreement, and then click **Yes** when you accept the agreement.



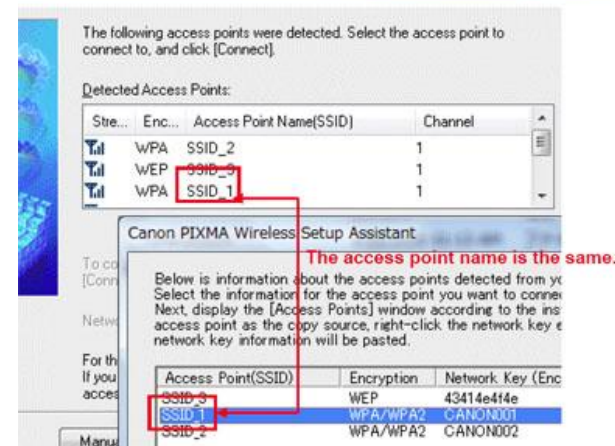
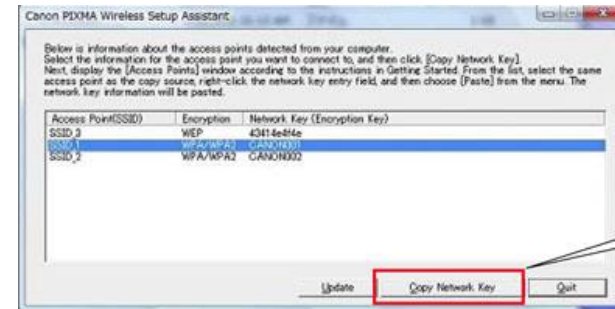
Using the Canon PIXMA Wireless Setup Assistant

<< Previous

Next >>

Step Four

1. The "Canon PIXMA Wireless Setup Assistant" tool is launched.
2. Confirm that the access points listed in the window are the same as the ones in the Access Points window ([Step One](#)).
3. Select the access point name that you are connecting to, and then click the "Copy Network Key."



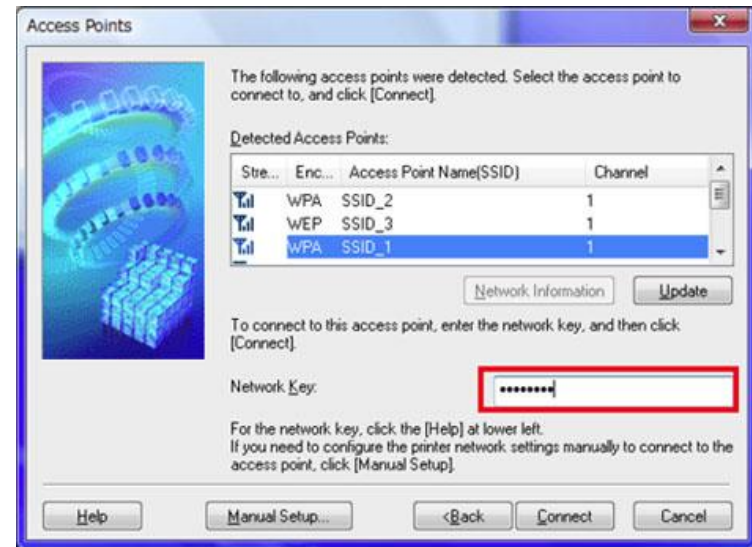
Using the Canon PIXMA Wireless Setup Assistant

<< Previous

Next >>

Step Five

1. Click the access point name(s) in the Access Point window (you will find the name(s) in "Detected Access Points" there.)
2. Click the **Network Key input box**
3. Enter the network key by doing one of the following:
 - a. Right-click the mouse and select "Paste" from the drop down menu.
 - b. Or, while holding the "Ctrl" key, press the "V" key on your keyboard.
4. Click **Connect**. When access point names are the same, you can select any one of them. The tool "**Canon PIXMA Wireless Setup Assistant**" is launched.



<- Input box

Step Six

When the setup is completed, the Setup Complete dialog is displayed.

Troubleshooting

If either of the dialog boxes pictured below are displayed, the entered network key may not match with the access point you specified.

Click the **OK** or **Back** button to open the Access points window. Confirm the correct access point name and repeat Steps Four through Six.

