

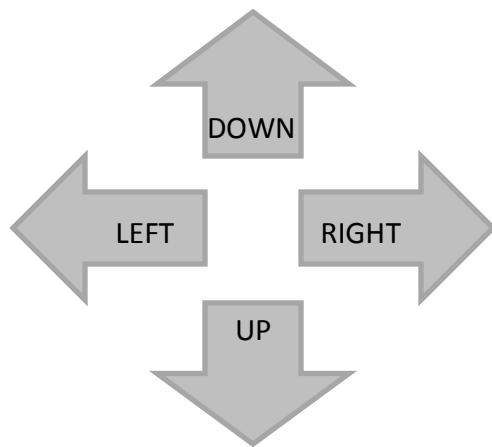


Obtaining Your Network Key

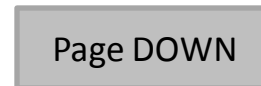
PIXMA MX410

Mac OS

Navigation Tips for Macintosh Users



To navigate this guide, please use the arrows on the MAC keyboard or use the PAGE UP and Page DOWN keys.



Obtaining Your Network Key

PIXMA MX410

Mac OS

Introduction	4
Download the Canon PIXMA Wireless Setup Assistant	5
Using the Canon PIXMA Wireless Setup Assistant	7
Troubleshooting	13

Introduction

Introduction

If you are unable to proceed past the **Access Points** screen during wireless setup because the required Network Key is not known, you may be able to retrieve the information using the **Canon PIXMA Wireless Setup Assistant**.

IMPORTANT: When you do not need this tool anymore, drag the file in the Trash, and delete it.

NOTE: The Wireless Setup Assistant is supported on Mac OS X 10.4 or greater

Download the Canon PIXMA Wireless Setup Assistant

Download the Canon PIXMA Wireless Setup Assistant

To use the machine by connecting it to a computer, software including the drivers needs to be copied (installed) to the computer's hard disk. The installation process takes about 20 minutes. (The installation time varies depending on the computer environment or the number of applications to be installed.)

Step One

Go to the [Drivers & Software for your model](#)

Step Two

Select your operating system in the **Select OS** dropdown menu.

Drivers & Software

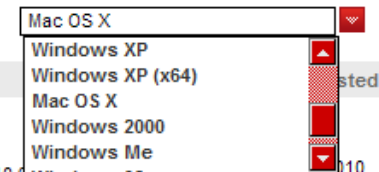
Choose an operating system from the drop down menu then select the appropriate driver from the list below

Choose Operating System:

Drivers

icaosx151m.dmg

ICA Driver Ver. 1.5.1m (Mac OS X 10.6)



Download the Canon PIXMA Wireless Setup Assistant

Step Three

In the **Software** section, click the link to download the file **CanonAPChkTool**.

*File name will appear red when mouse pointer is on file name.

Software	Date Posted	File Size
▶ CanonAPChkTool_osx100ben.dmg Canon PIXMA Wireless Setup Assistant (Macintosh)	10/16/2009	1.40MB

Step Four

On the next screen, read the information and instructions and click **I Agree - Begin Download**

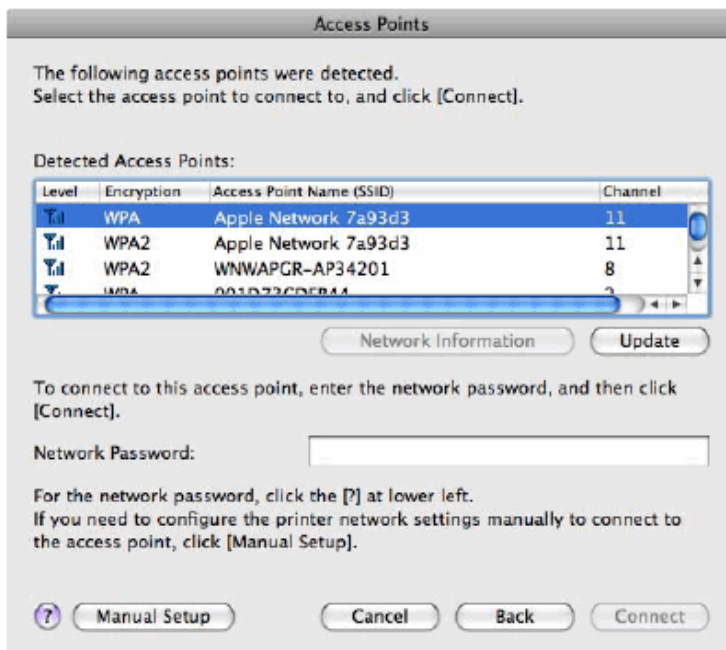
Choose to "Save" the file. **Write down the file name and the location to where the file is being saved.**

Using the Canon PIXMA Wireless Setup Assistant

Using the Canon PIXMA Wireless Setup Assistant

Step One

Open the Access Points window.



If the Access Points window is closed:

1. If you are installing the latest driver from download, re-run the the driver/network installation by double-clicking the driver file you downloaded previously.
2. If you are installing from the CD-ROM, select Custom Install, printer driver / MP Drivers, and then perform the installation.

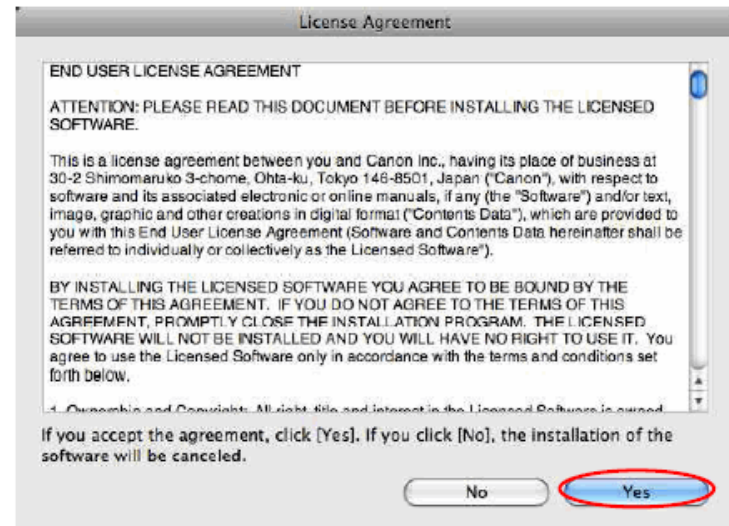
Using the Canon PIXMA Wireless Setup Assistant

Step Two

Run the downloaded tool "Wireless Setup Assistant " that you downloaded to the computer by double clicking its icon.

Step Three

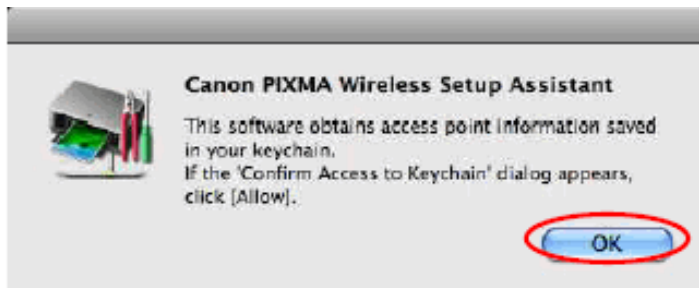
Read the License Agreement, and then click **Yes** when you accept the agreement.



Using the Canon PIXMA Wireless Setup Assistant

Step Four

When the following dialog is displayed, click **OK**.



Step Five

1. When the "Confirm Access to Keychain" dialog is displayed, click **Allow Once** in Mac OS X v10.4, **Allow** in Mac OS X v10.5/v10.6.
2. If the dialog is displayed more than once, click the above-mentioned button in each dialog.
3. **Do not click Always Allow**, the information will not be obtained properly.



<Mac OS X v10.4>



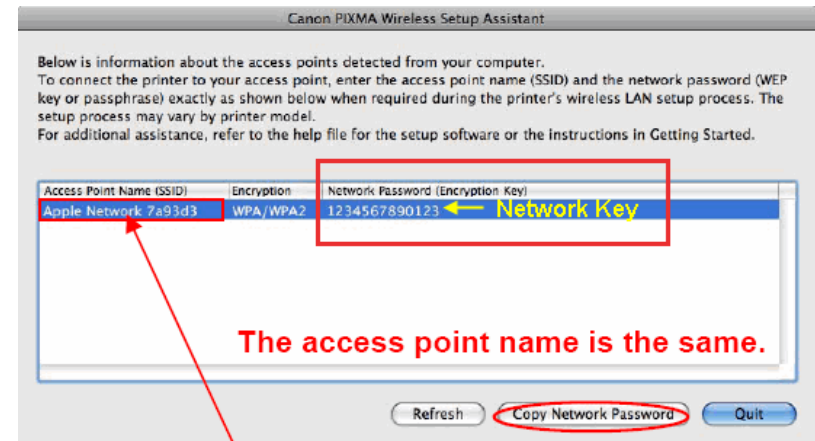
<Mac OS X v10.5/v10.6>

Using the Canon PIXMA Wireless Setup Assistant

Step Six

1. The "**Canon PIXMA Wireless Setup Assistant**" tool is launched.
2. Confirm that the same access points are listed in the Assistant and Access Point windows.
3. Write down the Network Password of the access point or click **Copy Network Password**.

NOTE: The Network Password may be displayed with texts of the alphabets from A to F (base 16number). Write down it as-is.



Level	Encryption	Access Point Name (SSID)	Channel
WPA	Apple Network 7a93d3	2	
WPA2	Apple Network 7a93d3	2	
WPA2	WNWAPCR-AP34201	5	
WPA	Apple Network 7a93d3	11	

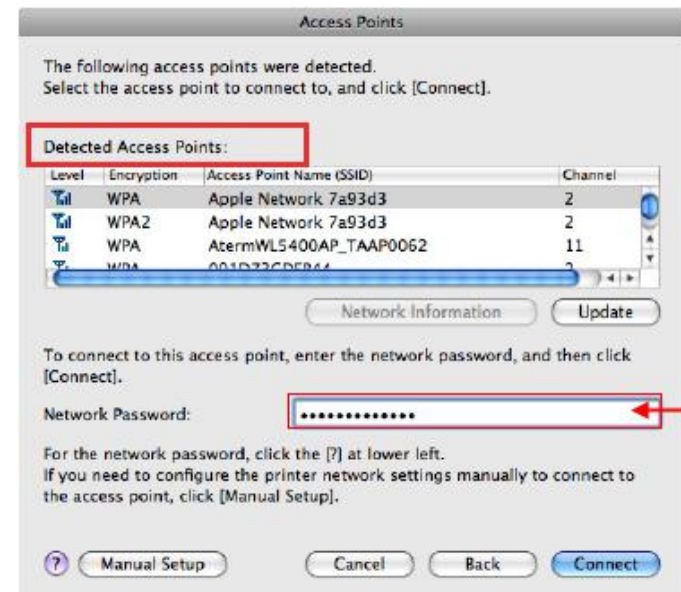
Using the Canon PIXMA Wireless Setup Assistant

Step Seven

1. Click the access point name(s) specified in Step One in the Access Point window (you will find the name(s) in "**Detected Access Points**" there.).
2. Click the Network Password "Input box"
3. Now enter or paste the network key (network password)

NOTE:

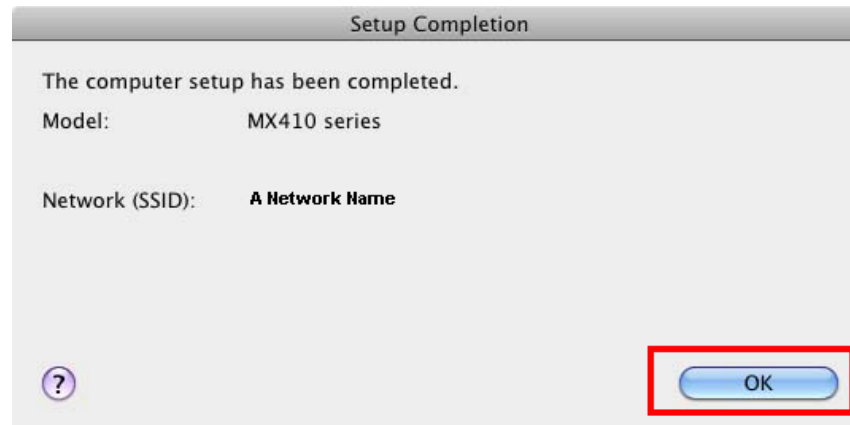
- If you enter the password manually, verify that it is correct.
- If the same network names are displayed, select either one of them. (Either one will be fine.)
- To use the printer together with the multiple Access Points, click the **Manual Setup** button for setup instead of the **Connect** button.



Using the Canon PIXMA Wireless Setup Assistant

Step Eight

Click "**Connect.**" When the setup is completed, the Setup Complete dialog is displayed.



Troubleshooting

If the message "The Printer could not be connected to the specified access point" is displayed when clicking the Connect button, you may have selected the network name (Access Point name (SSID)) you are not using (e.g. the one your neighbor is using). In such a case, please select the other one.

