

# **Installing Your Printer to Your Network for the First Time**

**PIXMA iX6820**

**Mac and Windows OS**

# Installing Your Printer to Your Network for the First Time

PIXMA iX6820  
Macintosh and Windows OS

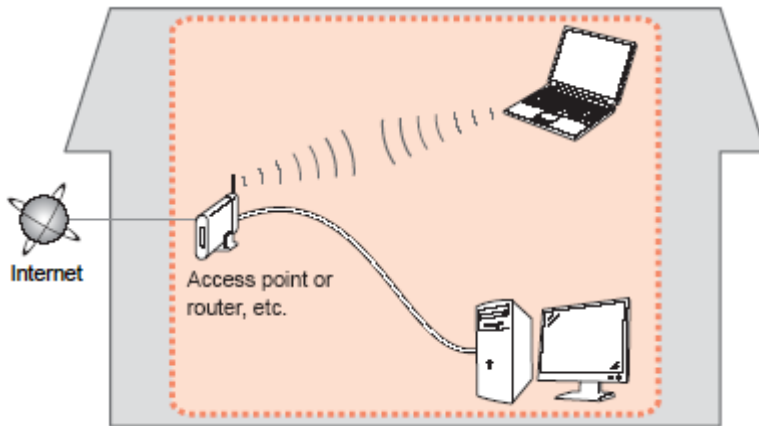
<b>Preparing to Connect My Printer to My Network</b>	<b>3</b>	
Network Requirements		3
Notes on Wireless Connection		4
<b>Installing the Drivers &amp; Software</b>		<b>5</b>

# Preparing to Connect My Printer To My Network

[<< Previous](#)[Next >>](#)

## Network Requirements

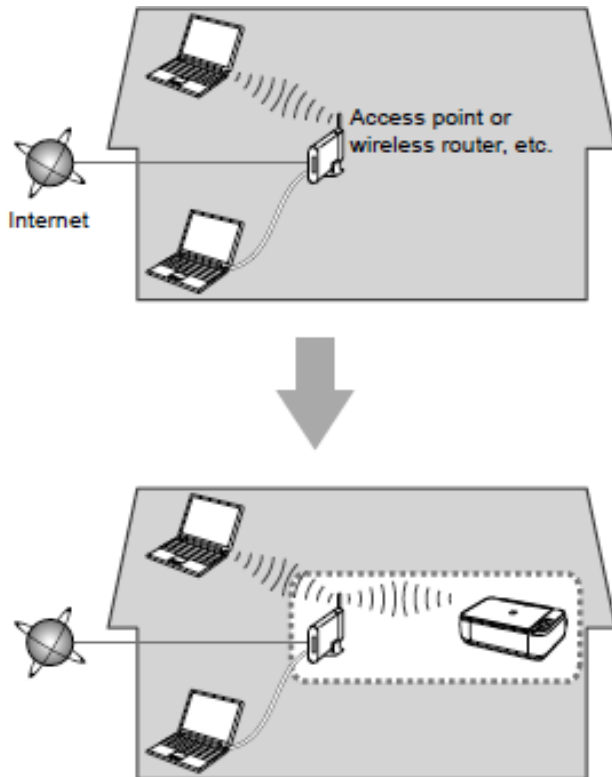
Before connecting the machine to the network, make sure that configuration of the computer and access point or router is complete, and that the computer is connected to the network.



## Wireless Connection

Before connecting the machine to the network, the computer needs to be connected to the network. Make sure that configuration of the computer and access point or router is complete.

# Preparing to Connect My Printer To My Network

[<< Previous](#)[Next >>](#)

An "Ad-hoc connection," which establishes a direct connection to the computer over a wireless connection without using an access point, is not supported.

## Notes on Network Connection

- The configuration, router functions, setup procedures and security settings of the network device vary depending on your system environment. For details, refer to your device's instruction manual or contact its manufacturer.
- In an office setup, consult your network administrator
- If you connect to a network that is not protected with security measures, there is a risk of disclosing data such as your personal information to a third party.
- If an error message appears or if you have trouble with the network connection, refer to the printed manual: Network Setup Troubleshooting.
- Place the machine and computer on the same network segment.

## Software Installation

To use the machine by connecting it to a computer, software including the drivers needs to be copied (installed) to the computer's hard disk. The installation process takes about 20 minutes. (The installation time varies depending on the computer environment or the number of application software to be installed.)

### **IMPORTANT**

- Log on as the administrator (or a member of the Administrators group).
- Quit all running applications before installation.
- Do not switch users during the installation process.
- Internet connection may be required during the installation. Connection fees may apply. Consult the internet service provider.
- It may be necessary to restart your computer during the installation process. Follow the on-screen instructions and do not remove the Setup CD-ROM during restarting. The installation resumes once your computer has restarted.
- If the firewall function of your security software is turned on, a warning message may appear that Canon software is attempting to access the network. If such a warning message appears, set the security software to always allow access.

# Installing the Drivers & Software

- Connecting to the wireless network

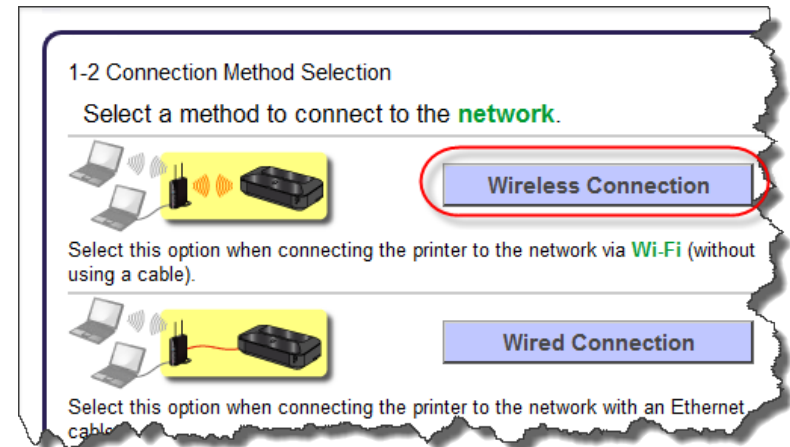
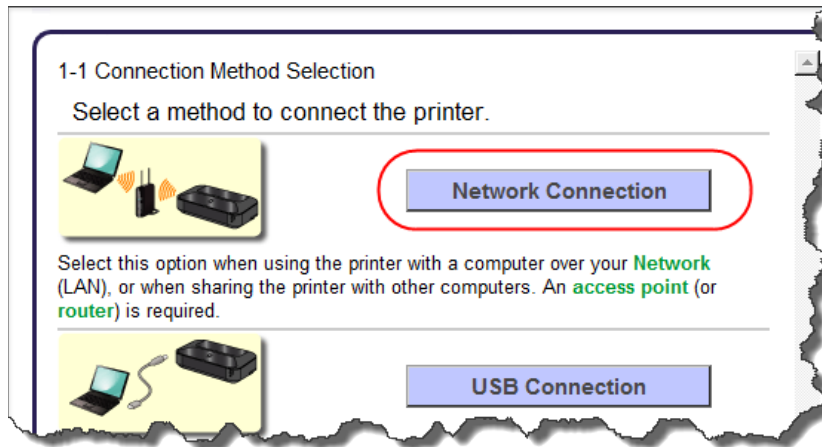
[<< Previous](#)

[Next >>](#)

## Installing the PIXMA iX6820 on Your Wireless Network

If you are installing your printer on your network for the first time, a step-by-step walk through of the wireless setup is built in to the installation routine of the software that shipped with your PIXMA Printer.

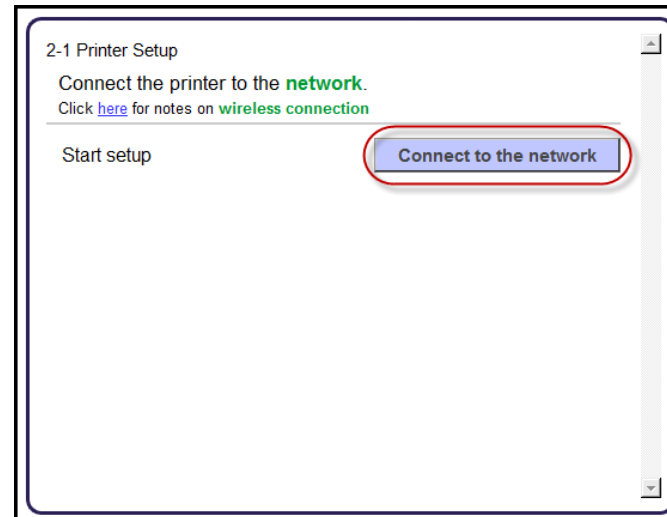
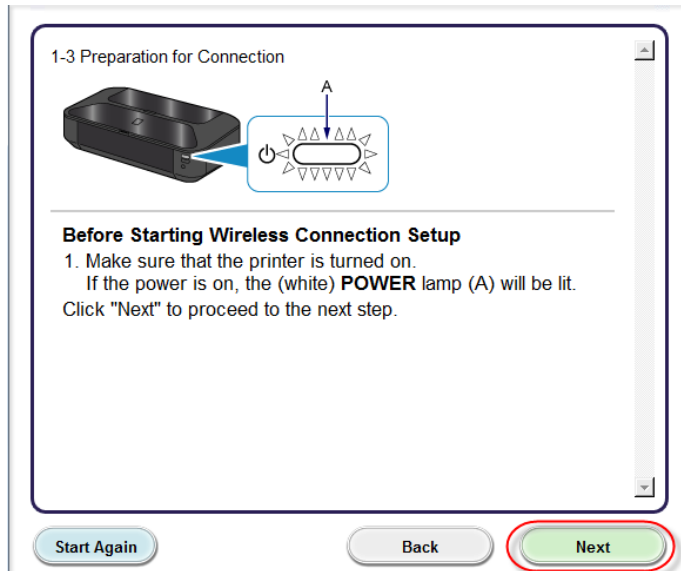
Simply insert the Setup CD-ROM that came with your printer into your CD-ROM drive and proceed through the easy to follow instructions. You'll be printing wirelessly in no time. Be sure to select **Network Connection** on the Connection Method Selection screen. Then select **Wireless Connection**.



# Installing the Drivers & Software

## - Connecting to the wireless network

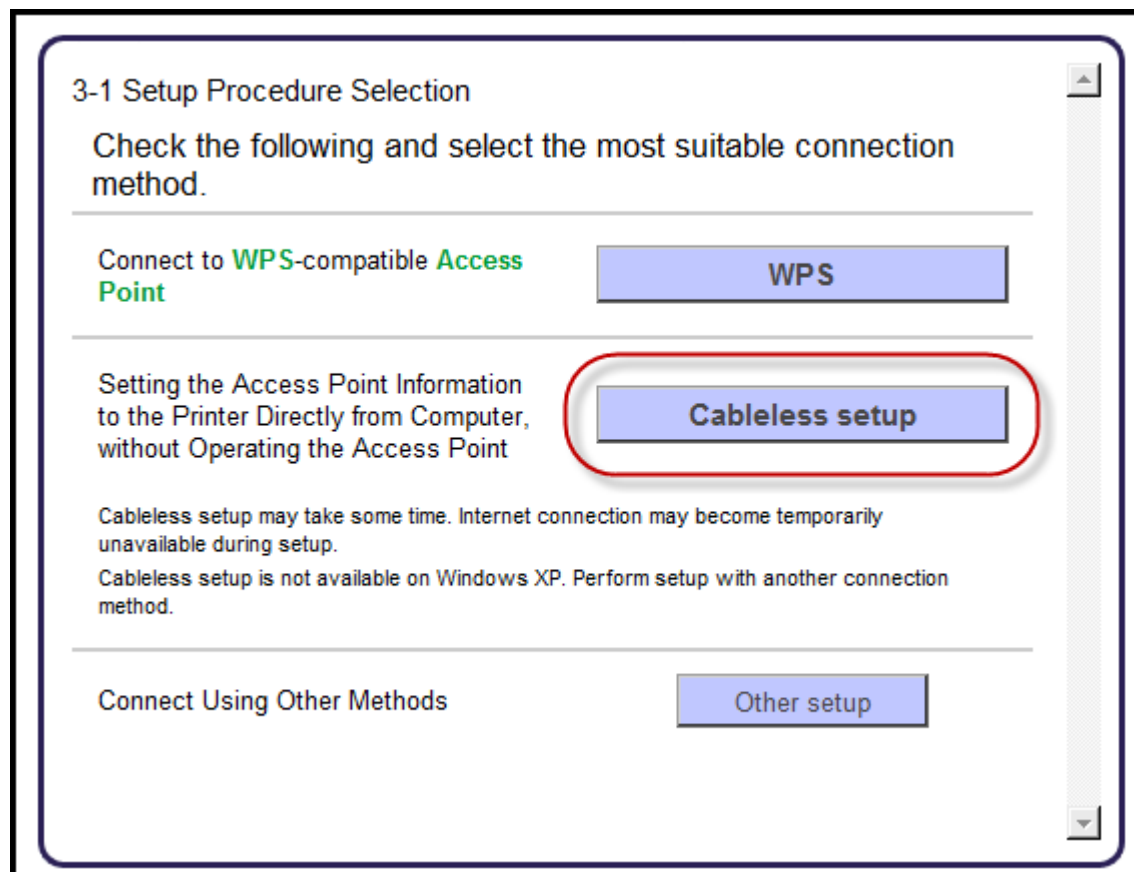
As instructed, make sure the printer's power lamp is lit and then click **Next** . Then on the **Printer Setup** screen(2-1), click **Connect to the network**.



# Installing the Drivers & Software

## - Connecting to the wireless network

Select **Cableless setup** on **Setup Procedure Selection** screen (3-1).

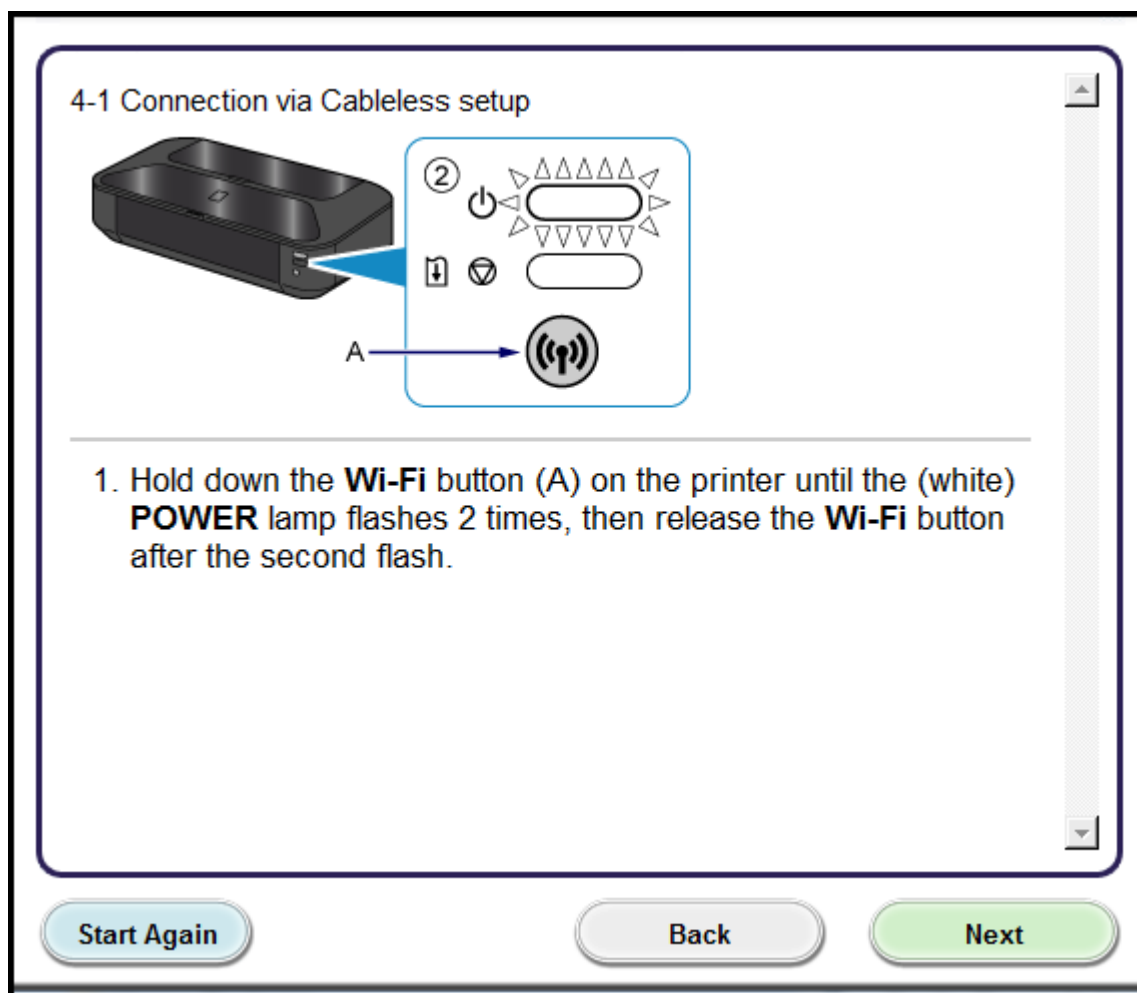




# Installing the Drivers & Software

## - Connecting to the wireless network

As instructed, press and hold the **Wi-Fi** button (A) until the white power lamp flashes 2 times and then release. Once that is done, select the **Next** button.



# Installing the Drivers & Software

## - Connecting to the wireless network

Continue through the installation following the on-screen instructions.

Canon PIXMA iX6800 series

### Software Installation List

The selected software will be installed. Make sure that the software you want to install is selected, and then click [Next].

<input checked="" type="checkbox"/> IJ Printer Driver	145 MB
<input checked="" type="checkbox"/> User's Manual	10 MB
<input checked="" type="checkbox"/> My Printer	14 MB
<input checked="" type="checkbox"/> My Image Garden	680 MB
<input checked="" type="checkbox"/> Quick Menu	40 MB
<input checked="" type="checkbox"/> Easy-WebPrint EX	60 MB
<input type="checkbox"/> XPS Driver	130 MB

Drive C: 106300 MB free space  
Total used space: 1914 MB

Select All

Clear All

Back

Estimated installation time: 10 to 15 minutes  
Installation may take some time depending on your network environment.

Next

## Installing the PIXMA iX6820 on Your Wireless Network

If you can't find your CD-ROM, you may download the iX6820 series Mini Master Setup, which includes the same step-by-step installation as the CD-ROM, by following the instructions below:

1. [Click here to access the iX6820 Drivers & Software page.](#)
2. If your OS is not automatically detected, then select your operating system (2).
3. Click on 'iX6800 series Full Driver & Software Package...'. (3)
4. Check the box indicating that you have read the Disclaimer. (4)
5. Click the Download button (5). Once the download is complete, if it does not run automatically, double-click the file from its download location to begin the installation.

**Drivers & Software**

1. Select a file from the "Recommended For You" section or click on "Show All" to see all files.  
2. Click on the file you would like to download.  
3. After agreeing to the terms of the Disclaimer by checking the box, click on the Download button.

Operating System: Windows 7 (x64) (Detected) (2)

Select Language: ☒ English ☐ Spanish ☐ All

Show All

▼ Recommended For You Sort by: Most Recent Post Date ▼

File Description	Date	Size
<input checked="" type="checkbox"/> iX6800 series Full Driver & Software Package (Windows... (3) File Name: win-ix6800-1_0-ucd.exe	01/06/14	48.92 MB

This is an online installation software to help you to perform initial setup of your printer on a PC (either USB connection or network connection) and to install various software.

(4) ☒ I have read and agree to the terms of the [Disclaimer](#) and wish to continue with the download.

(5) Download