



## Connecting Web Services

## Connecting to Web Services

Set up the camera to use a variety of Web services as follows.

### Adjusting Settings for Using Web Services From CANON iIMAGE GATEWAY

Adjust account settings for the Web services you want to use.

- A computer is required for Web service settings, starting with CANON iIMAGE GATEWAY.
- Because CameraWindow is used to adjust settings, be sure to install it from the CD-ROM beforehand (📖22). See "System Requirements" (📖22) for server transfer system requirements.
- For information on countries and regions where CANON iIMAGE GATEWAY is available, visit the Canon website (<http://canon.com/cig>).

#### **1 Register as a CANON iIMAGE GATEWAY member.**

- From a computer or other device connected to the Internet, access <http://canon.com/cig> and visit the CANON iIMAGE GATEWAY site for your region.
- Follow the instructions displayed to complete member registration (free of charge).
- You must have an account with Web services other than CANON iIMAGE GATEWAY if you desire to use them. For further details, check the websites for each Web service you want to register.

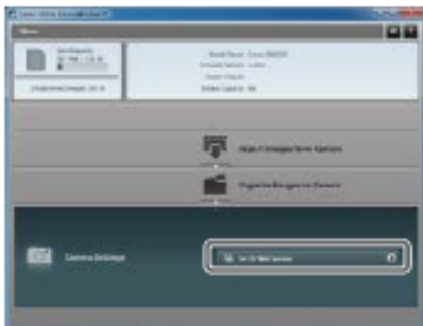
**2 Connect the camera to a computer with the interface cable (📖 23).**

- On a computer running Windows, there is no need to connect the interface cable if you complete settings in advance (📖 135). In this case, you can connect via Wi-Fi.

**3 Display CameraWindow (📖 24).**

**4 Access the CANON iMAGE GATEWAY login screen.**

- Click [Camera Settings], and then click [Set Up Web Services].



**5 Login to CANON iMAGE GATEWAY.**

- Enter your CANON iMAGE GATEWAY login name and password, and then click [Login].



## 6 Set a Web service you want to use.

- Follow the on-screen instructions to complete settings for Web services you want to use.
- Once the Web service settings are complete, click [Finish] at the bottom of the window to close it.



## 7 Apply Web service settings to the camera.

- Choose the name of the Web service you want to set on the camera, and click [→] in the middle of the lists.
- ▶ The name of the Web service that will be saved to the camera will be displayed in the [Camera] list.
- Click [▲] or [▼] to change the order of the Web services that will be displayed in the camera's Wi-Fi menu.
- After you finish adjusting settings in the [Camera] list to your liking, close the window.
- ▶ The settings of Web services and for transferring images via the server are applied to the camera.



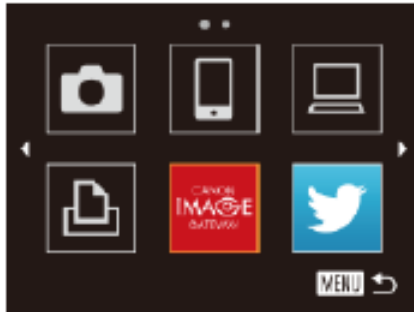
- An Internet connection is required to access CANON iIMAGE GATEWAY (an Internet browser must be installed on the computer, you must have an account with an Internet service provider, and an Internet connection must be established).
- When connecting to CANON iIMAGE GATEWAY, check the CANON iIMAGE GATEWAY website for browser (Microsoft Internet Explorer, etc.) settings, conditions, and version information.
- Separate ISP connection and access point fees may be applicable.



- After logging in to CANON iIMAGE GATEWAY the second time in step 5, the screen in step 7 will be displayed. To change settings for Web services you use, click [Edit Web Services].
- To add or change Web services, repeat the above procedures starting from step 2.

## Establishing Web Service Connections

Connect to Web services registered to the camera.



### 1 Access the Wi-Fi menu.

- Press the <▲> button.

### 2 Choose a Web service.

- Press the <▲><▼><◀><▶> buttons or turn the <⦿> dial to choose the icon of the destination Web service, and then press the <FUNC SET> button.
- If the Web service has multiple recipients, select the desired recipient on the [Select Recipient] screen, and press the <FUNC SET> button.

### 3 Connect to an access point.

- With a WPS-compatible access point, connect to the access point by following steps 4 – 6 in "Adding a Computer" (📖 136).
- With an access point that is not WPS-compatible, connect to the access point by following steps 2 – 3 in "Connecting to Access Points in the List" (📖 137).



- ▶ When you have connected to the Web service, the image transfer screen will be displayed. Proceed to "Sending Images" (📖 141). However, when [Send via Server] is selected, images will be sent as soon as a connection is established (📖 143).



- When you are in the vicinity of an access point that you have previously connected to, the camera will automatically connect to it in step 2. To change access points, select [Switch Network] from the screen that will be displayed when the connection is being established, and follow steps 4 – 5 in “Adding a Computer” (📖 136).



- After you have accessed the Wi-Fi menu once, you can access it again by pressing the <▲> button. The recent target device is listed first, so you can easily connect again by pressing the <▲><▼> buttons to choose it. To add a new device, display the device selection screen by pressing the <◀><▶> buttons, and then configure the setting. If you prefer not to display recent target devices, press the <MENU> button, and on the [f↑] tab, choose [Wi-Fi Settings] ▶ [Target History] ▶ [Off].