



## Connecting to a Computer

## Connecting to a Computer

Configure computer settings for the connection, add the computer as a connection destination, and transfer images to the computer wirelessly using the included software CameraWindow as follows.

---



- When connected to a computer, the camera is used to establish the connection and then the computer (included software CameraWindow) is used to transfer images.

## Preparing to Register a Computer

Prepare to register a computer.

### Checking Your Computer Environment

For computer environments that allow Wi-Fi connection with a camera, refer to "System Requirements" (📖20).

Additionally, the included software CameraWindow must be installed (📖21).

---



- Windows 7 Starter and Home Basic editions are not supported.
- Windows 7 N (European version) and KN (South Korean version) require a separate download and installation of Windows Media Feature Pack.

For further details, see the following website.

<http://go.microsoft.com/fwlink/?LinkId=159730>

## ■ Checking Your Wi-Fi Environment

To use Wi-Fi, a Wi-Fi base unit (Wi-Fi router, etc.) that acts as your access point must be connected to a computer. Be sure to use a Wi-Fi base unit that conforms to the Wi-Fi standard listed in “Specifications” (📖 129).

If you are already using Wi-Fi, confirm the following items and mark each one on the Check sheet. For instructions on checking network settings, refer to the access point user guide.



- If system administrator status is needed to adjust network settings, contact the system administrator for details.
- These settings are very important for network security. Exercise adequate caution when changing these settings.

### Check sheet

<b>Network name (SSID/ESSID)</b> The SSID or ESSID for the access point you use.	
<b>Network certificate/data encryption (encryption method/encryption mode)</b> The method for encrypting data during transmission via Wi-Fi.	<input type="radio"/> None <input type="radio"/> WEP (open system authentication) <input type="radio"/> WPA-PSK (TKIP) <input type="radio"/> WPA-PSK (AES) <input type="radio"/> WPA2-PSK (TKIP) <input type="radio"/> WPA2-PSK (AES)
<b>Encryption key (network key)</b> The data encryption key used for transmission via Wi-Fi.	
<b>Key index (sent key)</b> The key specified when using WEP for Network certificate/data encryption.	<input type="radio"/> 1



- A router is a device that creates a network (LAN) structure for connecting multiple computers. A router that contains an internal Wi-Fi function is called a "Wi-Fi router".
- This guide refers to all Wi-Fi routers and base stations as "access points".
- If you use MAC address filtering on your Wi-Fi network, be sure to add the camera's MAC address to your access point. You can check your camera's MAC address by choosing the [↑↑] tab, [Wi-Fi Settings], and then [Check MAC Address].

## ■ Computer Settings for Connecting via Wi-Fi (Windows only)

On a computer running Windows, you must configure the following settings before you can connect the camera to the computer wirelessly.

---



### 1 Confirm the computer is connected to Wi-Fi.

- For instructions on checking your network connection, refer to the computer user manual.



### 2 Configure the setting.

- Click in the following order: [Start] menu ► [All Programs] ► [Canon Utilities] ► [CameraWindow] ► [Wi-Fi connection setup].
- In the application that opens, follow the on-screen instructions and configure the setting.



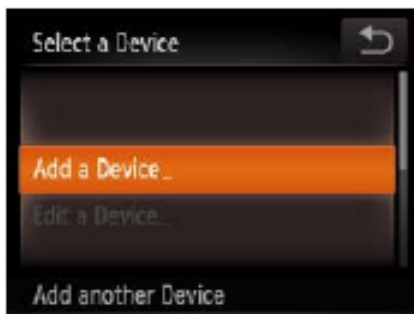
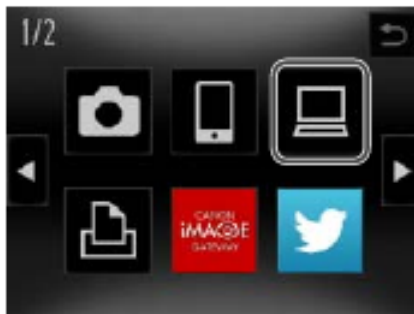
- The following Windows settings are configured when you run the utility in step 2.
  - Turn on media streaming.  
This will enable the camera to find the computer to access via Wi-Fi.
  - Turn on network discovery.  
This will enable the computer to find the camera.
  - Turn on ICMP (Internet Control Message Protocol).  
This allows you to check the network connection status.
  - Enable Universal Plug & Play (UPnP).  
This will enable network devices to detect each other automatically.
- Some security software may prevent you from completing the settings as described here. Check the settings of your security software.

## Adding a Computer

Add a computer to your list of devices to connect to via Wi-Fi. Follow these instructions when using a Wi-Fi Protected Setup (WPS) compatible access point to establish a push-button connection. If your access point is not WPS-compatible, establish a connection as described in “Connecting to Access Points in the List” (📖 96).



- WPS makes it easy to complete settings when connecting devices over Wi-Fi. You can use either Push Button Configuration Method or PIN Method for settings on a WPS supported device.
- Refer to the user guide provided with your access point to check if it supports WPS.
- Be sure to also read the user guide included with your access point.



### 1 Access the Wi-Fi menu.

- Touch [(📶)] (📖 88).

### 2 Choose a computer.

- Touch [📺].

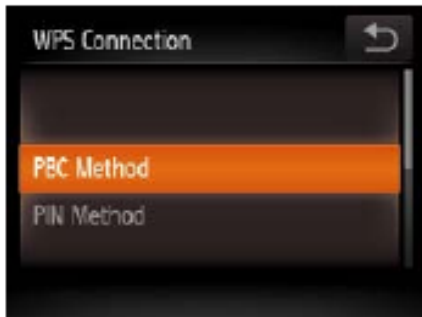
### 3 Choose [Add a Device].

- Touch [Add a Device].
- ▶ A list of detected access points will be displayed in the [Select Network] screen.



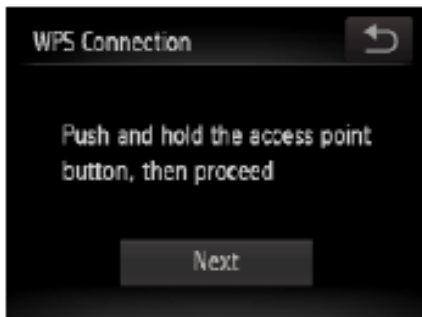
#### 4 Choose [WPS Connection].

- Touch [WPS Connection].



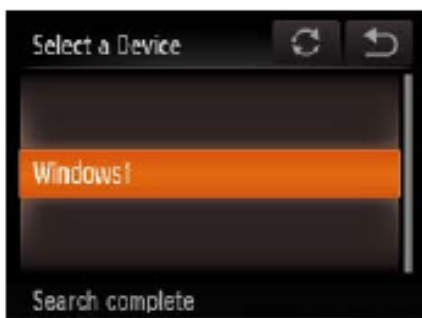
#### 5 Choose [PBC Method].

- Touch [PBC Method].



#### 6 Establish the connection.

- On the access point, hold down the WPS connection button for a few seconds.
- Touch [Next].
- ▶ The camera will connect to the access point.
- ▶ A list of computers connected to the access point will appear in the [Select a Device] screen.



#### 7 Choose a computer to connect to.

- Touch the name of the computer you want to connect to.
- When using a Macintosh computer, see “Using CameraWindow to Transfer Images to a Computer” (📖 97).



## 8 Install a driver (first Windows connection only).

- When the screen at left is displayed on the camera, click the Start menu on the computer, click [Control Panel], and then click [Add a device].

- Double click the connected camera icon.
- ▶ Driver installation will begin.
- ▶ After driver installation is complete, and the camera and computer connection is enabled, the AutoPlay screen will be displayed. Nothing will be displayed on the camera screen.
- Proceed to "Using CameraWindow to Transfer Images to a Computer" (📖97).

- 
- ! ● When you are in the vicinity of an access point that you have previously connected to, the camera will automatically connect to it in step 3. To change access points, select [Switch Network] from the screen that will be displayed when the connection is being established, and follow steps 4 – 5 in "Adding a Computer" (📖95).





- If you chose [PIN Method] in step 5, a PIN code will be displayed on the screen. Be sure to set this code in the access point. Choose a device in the [Select a Device] screen. For further details, refer to the user guide included with your access point.
- To add multiple computers, repeat the above procedures starting from step 1.
- When finished adding computers, touch [↶] in the upper right of the image transfer screen displayed after you connect to a computer in step 7. Touch [OK] after the confirmation message.
- To disconnect from the camera, turn off the camera.
- When a connection destination is set using the Touch Actions setting (📖76), you can automatically access the function to connect to the last connected destination from the next time by just dragging on the screen without needing to perform the connection operation.

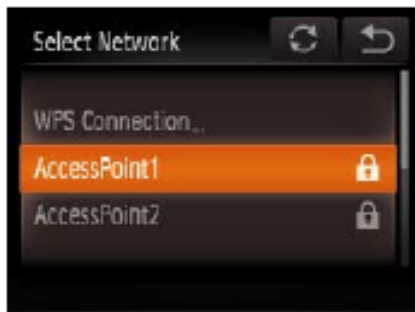
### ■ Connecting to Access Points in the List

#### 1 View the listed access points.

- View the listed access points as described in steps 1 – 3 of "Adding a Computer" (📖94).

#### 2 Choose an access point.

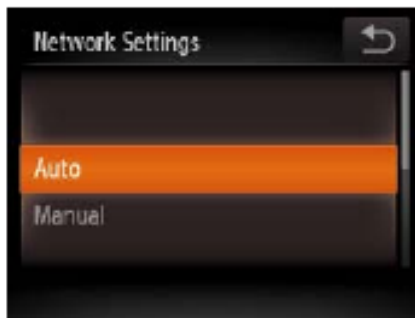
- Touch the network (access point) that you want to connect to.





### 3 Enter the access point's encryption key.

- Touch inside the frame shown at left to access the keyboard, and then enter the encryption key (📖 88).
- Touch [Next].



### 4 Choose [Auto].

- Touch [Auto].
- ▶ A list of other devices connected to the access point will appear in the [Select a Device] screen.

### 5 Choose a computer to connect to.

- Choose the computer to connect to, following steps 7 – 8 in “Adding a Computer” (📖 95). The computer is now added to the list.



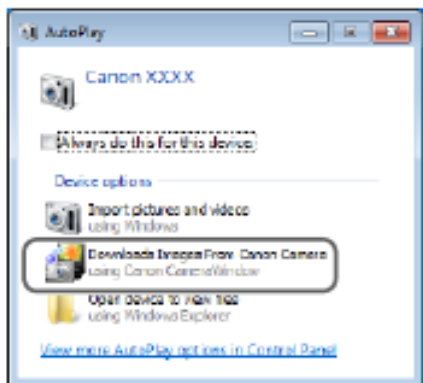
- For information on the access point's encryption key, refer to the body of the access point or its user manual.
- Up to 16 access points will be displayed. If no access points are detected, choose [Manual Settings] in step 2 to manually set an access point. Follow on-screen instructions and enter an SSID, security settings, and an encryption key.
- When you use an access point that you have already connected to for connecting to another device, [\*] is displayed for the encryption key in step 3. To use the same encryption key, touch [Next].
- To add multiple computers, repeat the above procedures starting from step 1.

## Using CameraWindow to Transfer Images to a Computer

Use the computer (included software CameraWindow) to transfer images from the camera to the computer.



- For details on how to use CameraWindow, see the *Software Guide* (📖 20).



### 1 Display CameraWindow.

- In Windows, click [Downloads Images From Canon Camera using Canon CameraWindow].
- ▶ CameraWindow will be displayed.
- ▶ On a Macintosh computer, CameraWindow is automatically displayed when a Wi-Fi connection is established between the camera and computer.



### 2 Import images.

- Click [Import Images from Camera], and then click [Import Untransferred Images].
- ▶ Images are now saved to the Pictures folder on the computer, in separate folders named by date.
- Click [OK] in the screen that is displayed after image import is complete.





- If CameraWindow is not displayed when using a Macintosh computer, click the [CameraWindow] icon in the Dock.
- Movies will take longer to import since the file size is larger than still images.
- To disconnect from the camera, turn off the camera.
- You can also specify to save all images or only selected images to the computer, and you can change the destination folder. Refer to the *Software Guide* (📖 20) for details.