

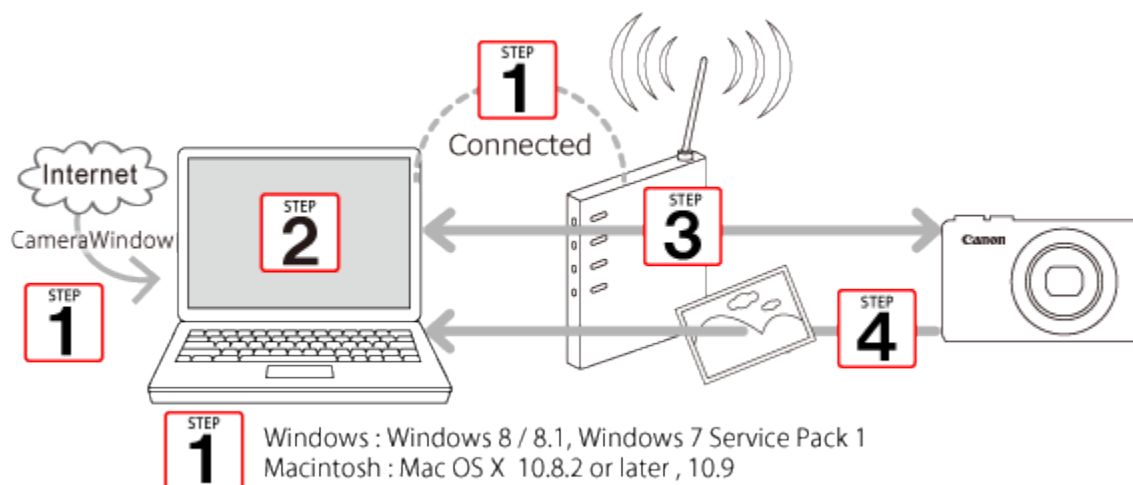


Sending images to a computer (Wi-Fi function) (PowerShot N2)

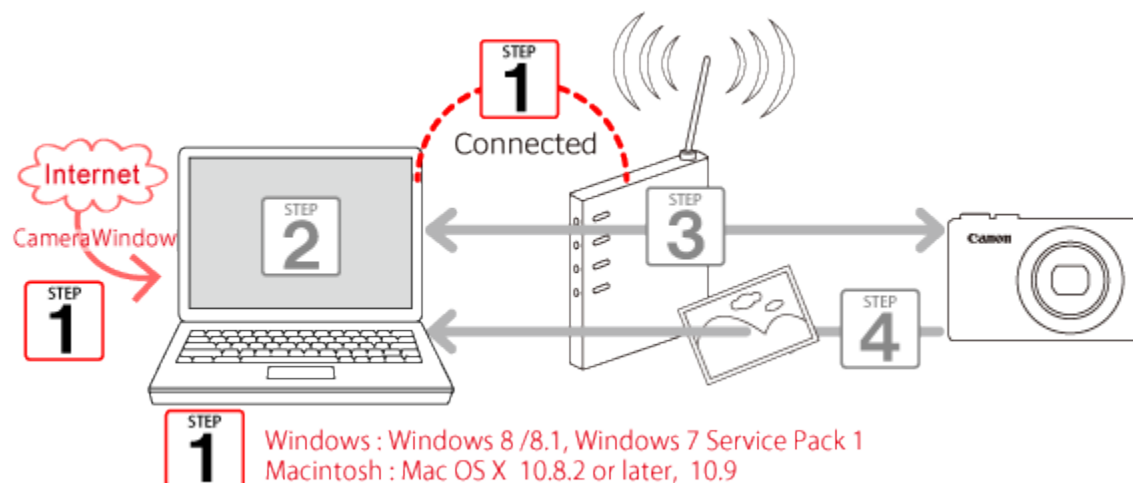
Getting started

The procedure for using the Wi-Fi function to send images from a camera to a computer is explained in the following four steps. Proceed in order from Step 1.

- 1** Step 1: Preparing necessary items
- 2** Step 2: Setting up the computer
- 3** Step 3: Connecting the camera to the computer
- 4** Step 4: Sending images to the computer



Step 1: Preparing necessary items



1. Check the computer's requirements.

The camera can connect to the following computers via wireless LAN.

- Windows: Windows 8 / 8.1, Windows 7 Service Pack 1
- Macintosh: Mac OS X 10.8.2 or later, 10.9

IMPORTANT

- Windows 7 Starter and Home Basic editions are not supported.
- Windows 7 N (European version) and KN (South Korean version) require a separate download and install of Windows Media Feature Pack.

2. Confirm that an access point base unit (Wi-Fi router, etc.) is connected to the computer.

3. Make sure that the included CameraWindow* software is installed.

*The software can be downloaded from the Canon homepage.

NOTE

- A router is a device that creates a network (LAN) structure for connecting multiple computers. A router that contains an internal wireless function is called a wireless (LAN) router.
- This page will refer to all wireless routers and base stations as "access points".
- When unsure of your computer setup, refer to the user manual provided with the computer.

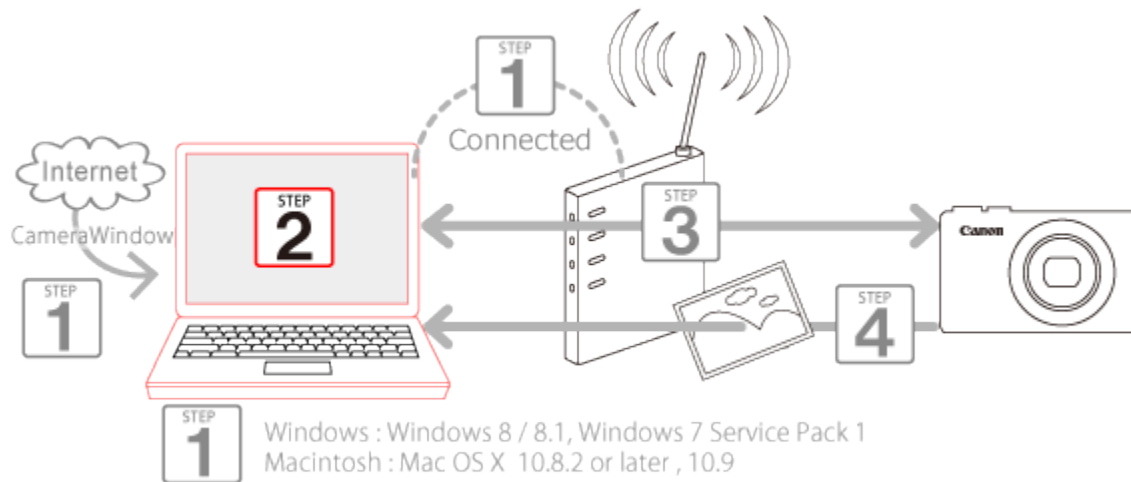
Step 2: Setting up the computer (Windows only)

Even if your computer is connected to an access point, sending images from the camera to the computer requires changing the computer's settings. The procedure is explained below.

Windows 7 users, proceed to 2A: Windows 7.

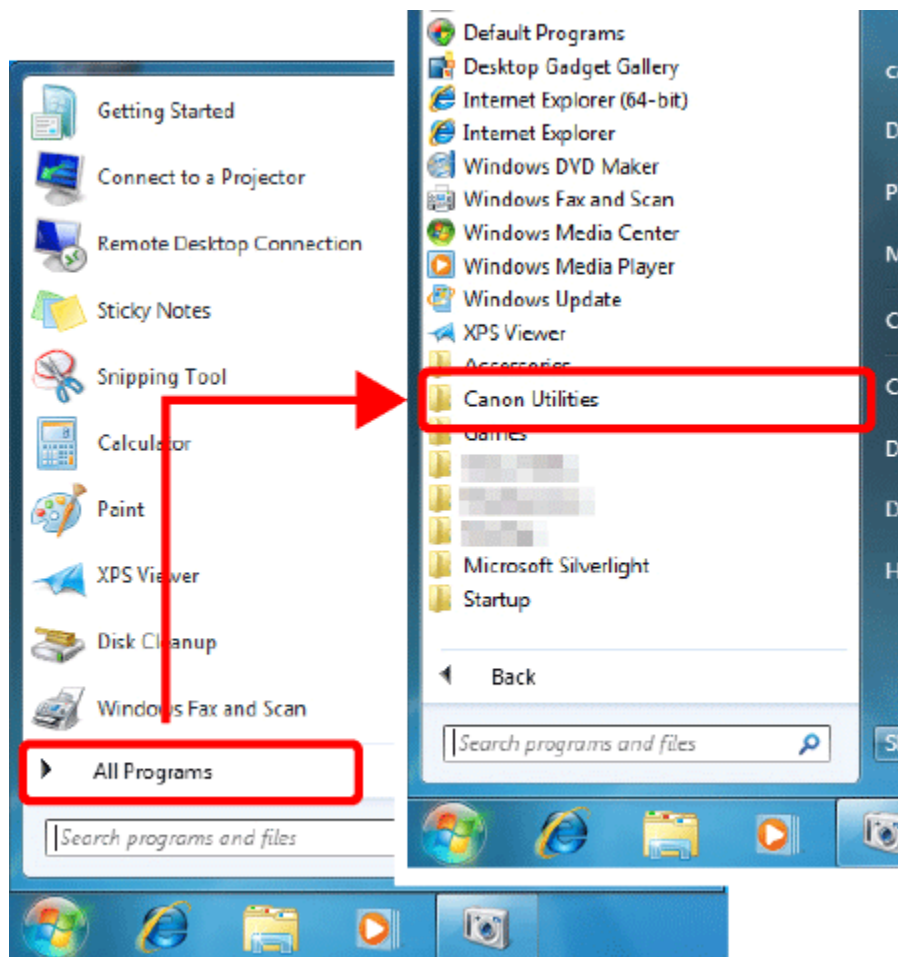
Windows 8 users, proceed to 2B: Windows 8.

Mac users, proceed to Step 3: Connecting the camera to a computer.

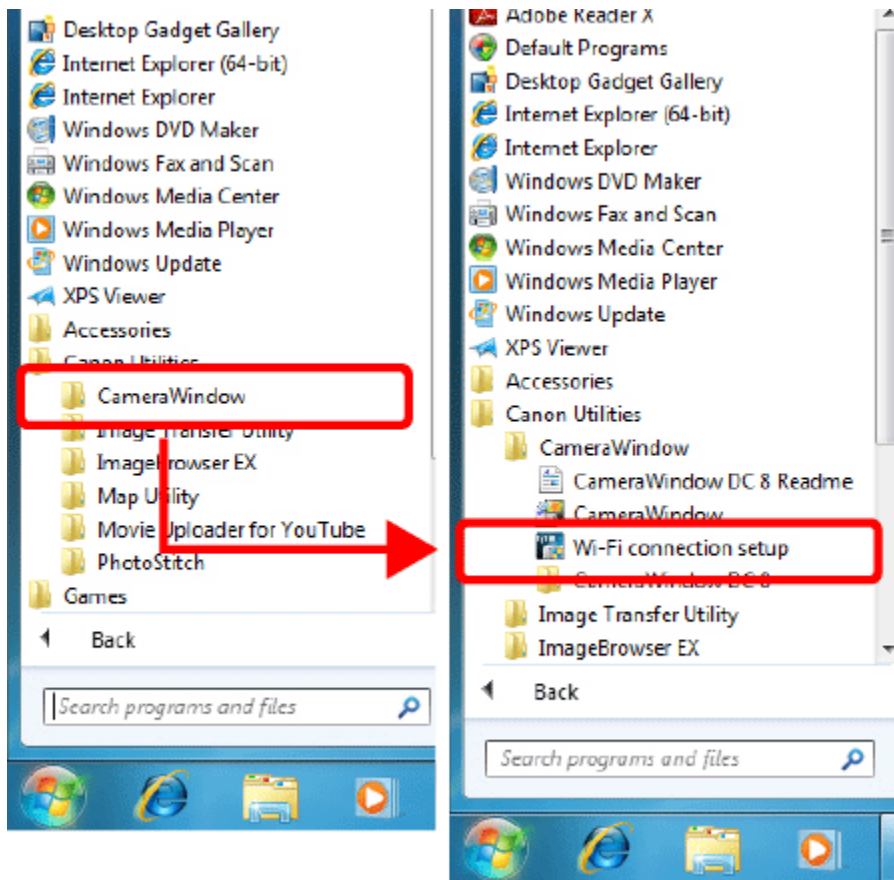


- 2A: Windows 7

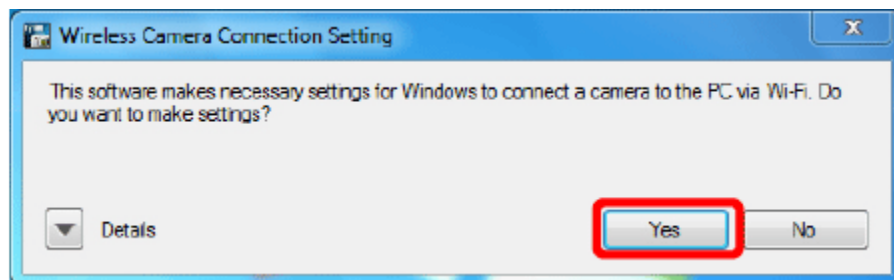
2A-1. In the Start menu, click [All Programs] > [Canon Utilities].



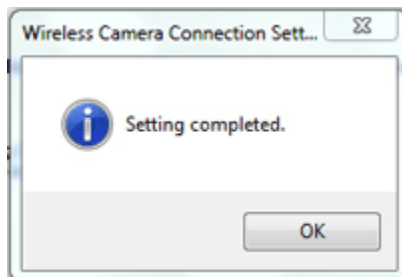
2A-2. Click [CameraWindow] > [Wi-Fi connection setup].



2A-3. Click [Yes] when the following screen appears.



2A-4. The following screen appears.

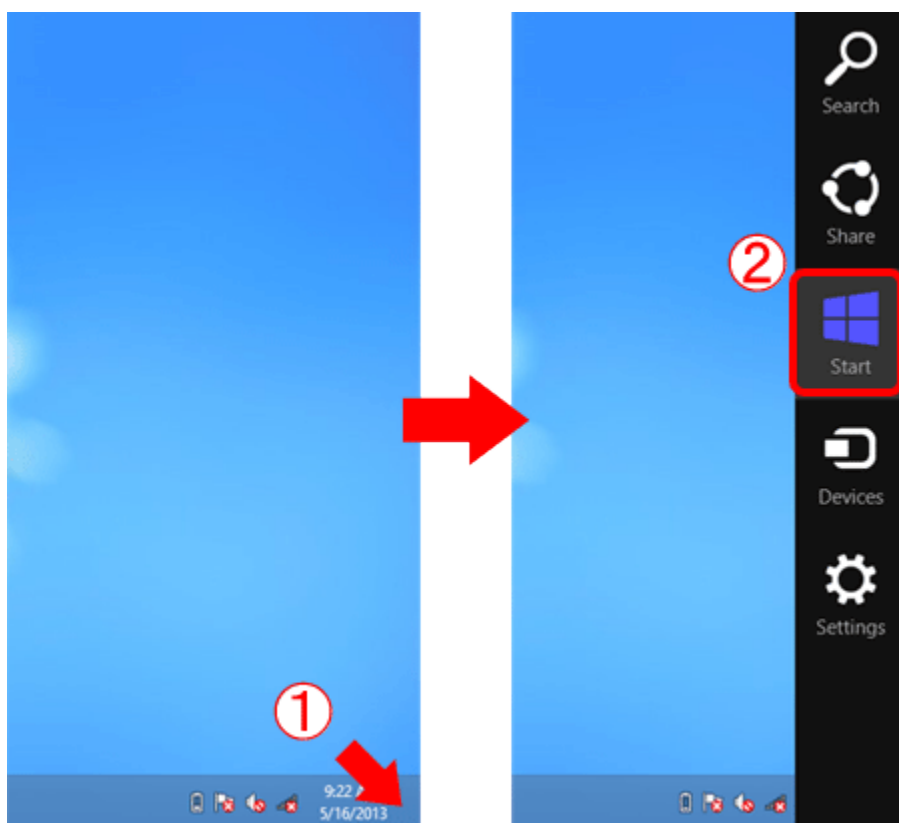


This concludes the steps for connecting a computer to a wireless LAN.

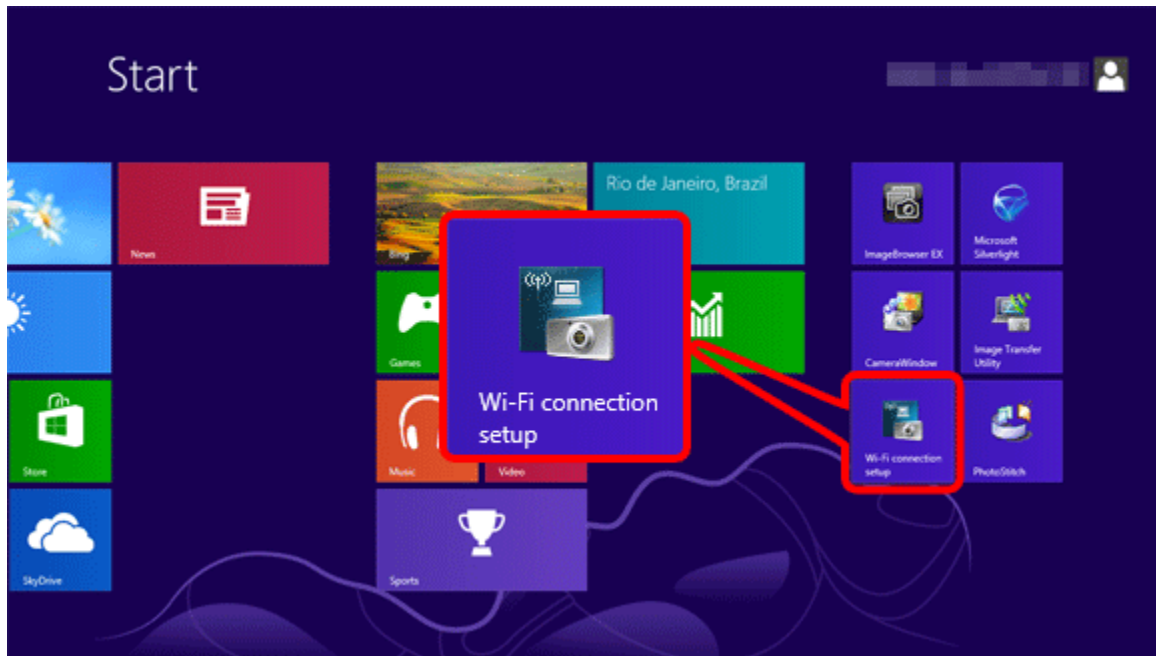
Please proceed to Step 3: Connecting the camera to a computer.

- 2B: Windows 8

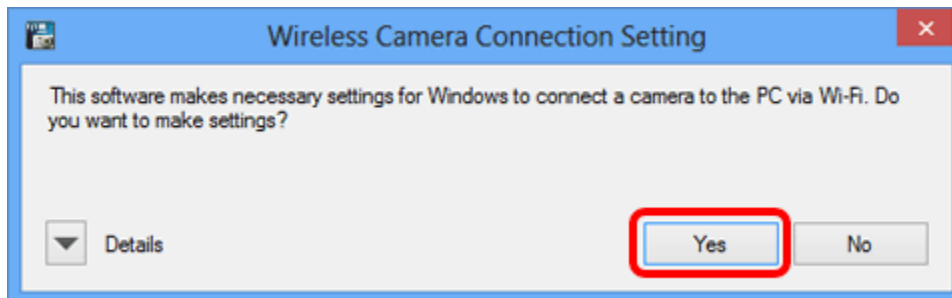
2B-1. ① Move the pointer to the bottom right of the screen to display the Charms, and then ② select [Start].



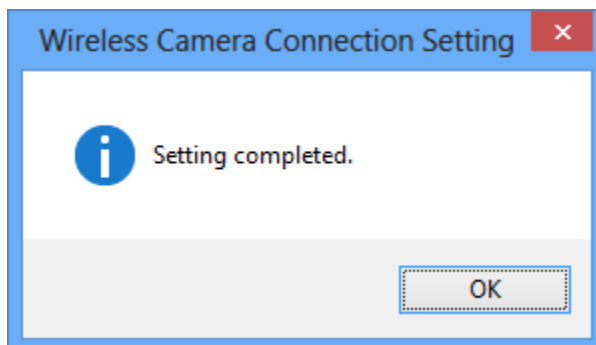
2B-2. Click [Wi-Fi Connection Set-up] on the Start menu.



2B-3. Click [Yes] when the following screen is displayed.



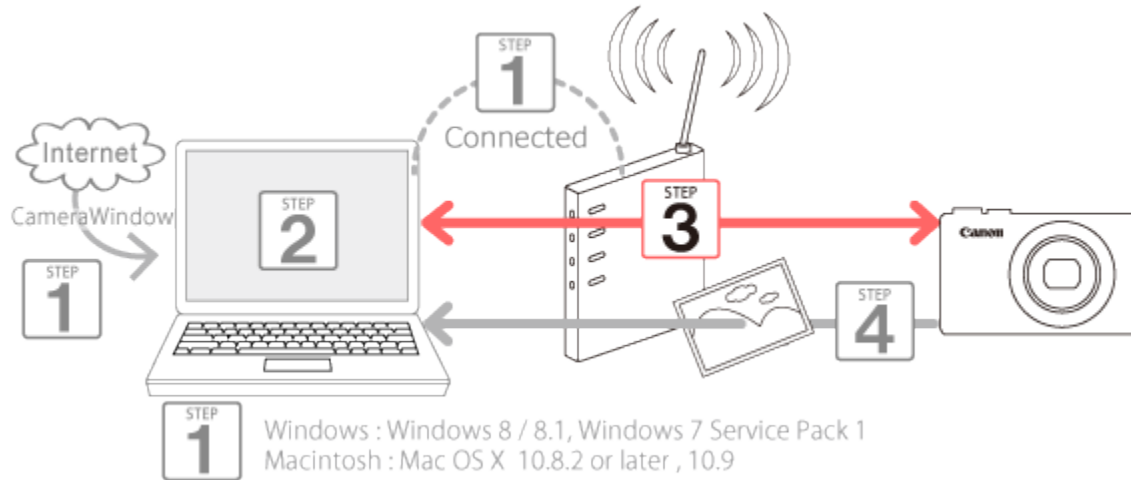
2B-4. The following screen appears.



This completes the Wi-Fi setting procedure for the computer.

Please proceed to Step 3: Connecting the camera to the computer.

Step 3: Connecting the camera to the computer



1. Press the <Playback> (▶) button to turn the camera on.

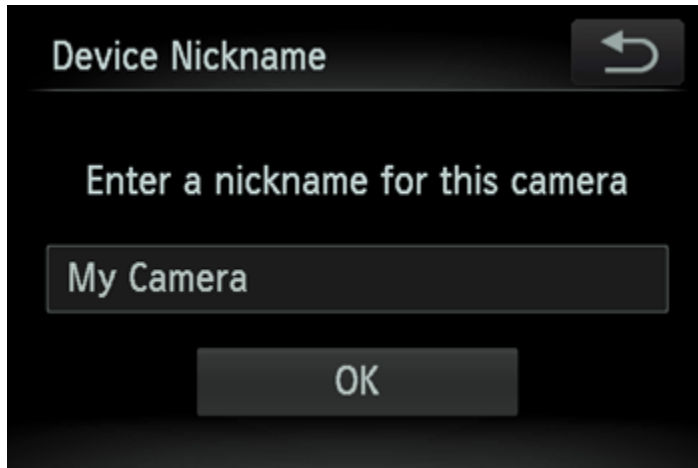
2. Touch [Wi-Fi] (📶).



NOTE

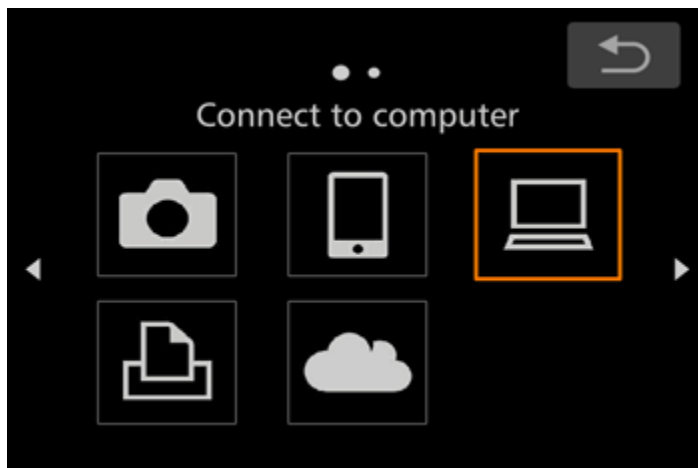
When setting up Wi-Fi for the first time, the camera nickname registration screen will be displayed.

This nickname will be displayed on the screen of target devices when connecting to other devices via Wi-Fi.

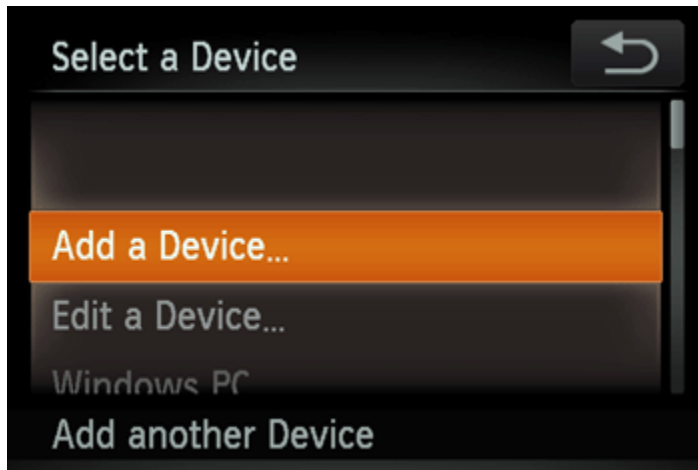


Touch within the frame and then enter a nickname (up to 16 letters and numbers) with the displayed keyboard. Then, touch [OK].

3. Touch [◀] or [▶] or drag up or down across the screen and touch [🖥️].



4. Drag up or down across the screen to choose [Add a Device].



NOTE

Once a computer is added, the computer name will be displayed on the screen in 4. To connect to a computer again, simply choose the computer name from the list.

5. A list of detected access points will be displayed in the [Access Point Connect] screen.

Use the following method to connect with an access point.

5AConnecting to a WPS Supported Access Point

5BConnecting to Access Points in the List

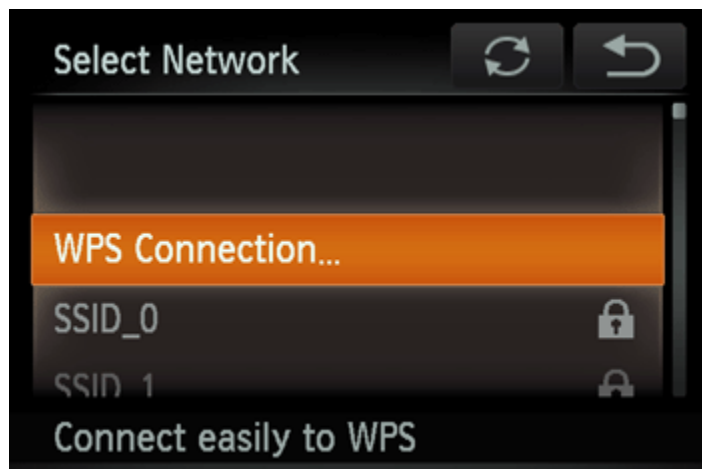
5CConnecting to an access point manually

NOTE

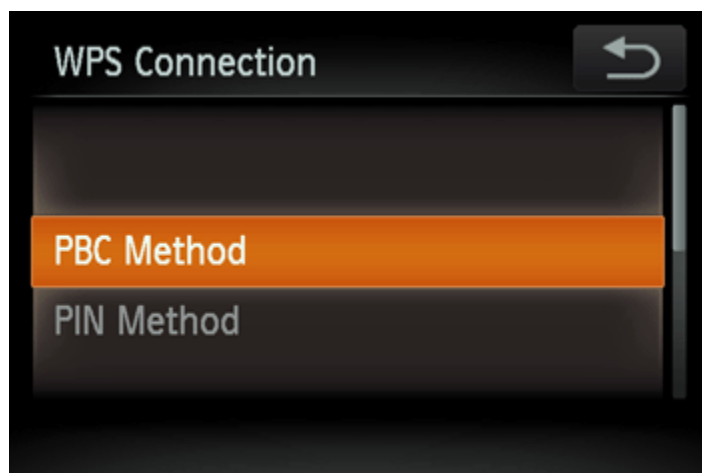
- WPS makes it easy to complete settings when connecting devices over Wi-Fi. You can use either Push Button Configuration Method or PIN Method for settings on a WPS supported device.
- Refer to the user guide provided with your access point to check if it supports WPS.

5AConnecting to a WPS Supported Access Point

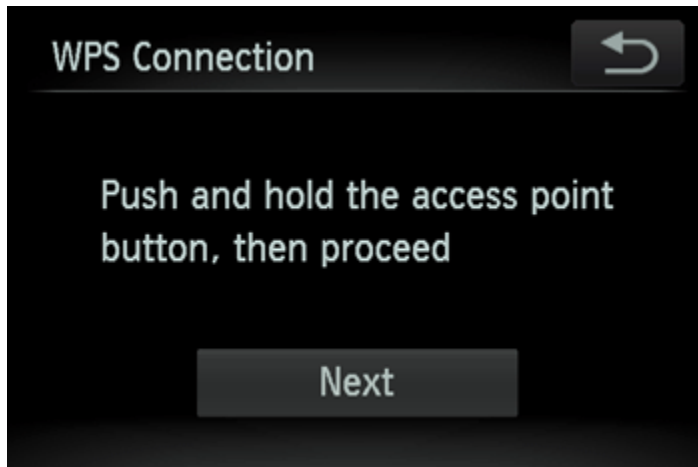
5A-1. Drag up or down across the screen to choose [WPS Connection].



5A-2. Touch [PBC Method].



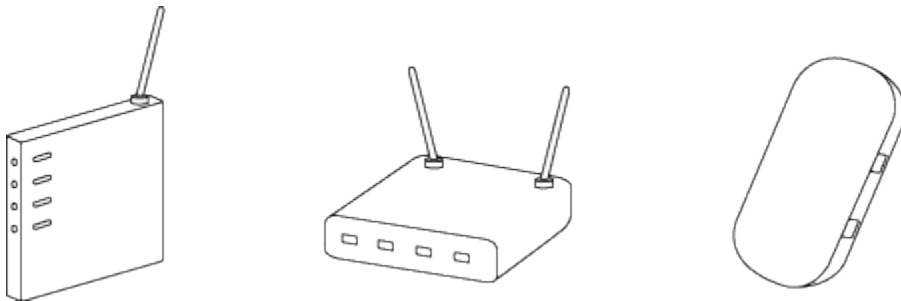
5A-3. On the access point, hold down the WPS connection button for a few seconds, and then touch [Next].



- The camera will connect to the access point.
- A list of computers connected to the access point will appear in the [Select a Device] screen.

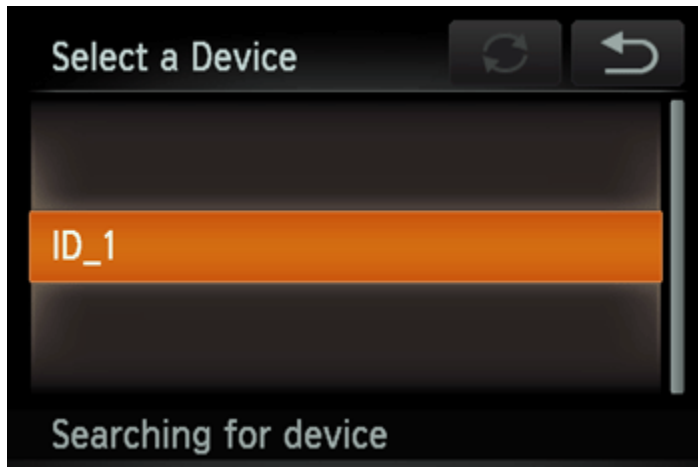
NOTE

A WPS connection button is affixed to your access point (Wireless LAN, router, etc.). For further details on the location and how many seconds to press it, refer to the user guide included with your access point.



5A-4. When a connectible device is found, a screen like the one below will appear.

Touch the name of the computer you want to connect with.



A screen like the one below will appear.



If you are using Mac or Windows with the drivers installed, the screen will turn off after the connection is terminated.

Proceed to Step 4: Sending images to a computer.

For Windows users, when connecting your camera to your computer wirelessly for the first time, the display will not change during connection.

Proceed to 6. Driver Installation.

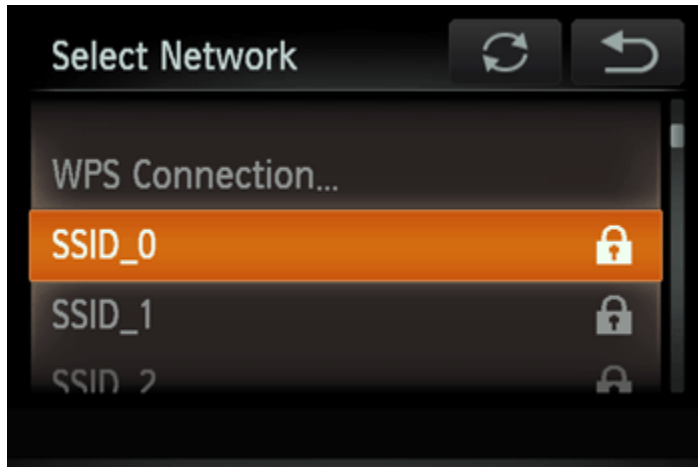
5BConnecting to Access Points in the List.

5B-1. The access point's encryption key is necessary for connection. Refer to the user guide included with your access point to look up information on the encryption key.

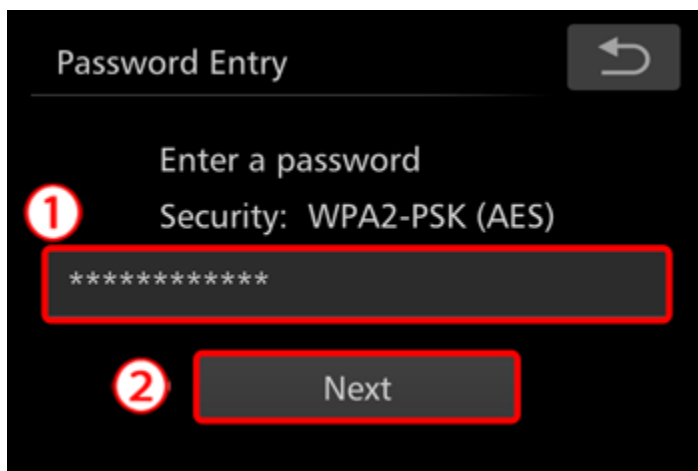
NOTE

- An encryption key (network key) is the key used when encrypting data during wireless transmission.

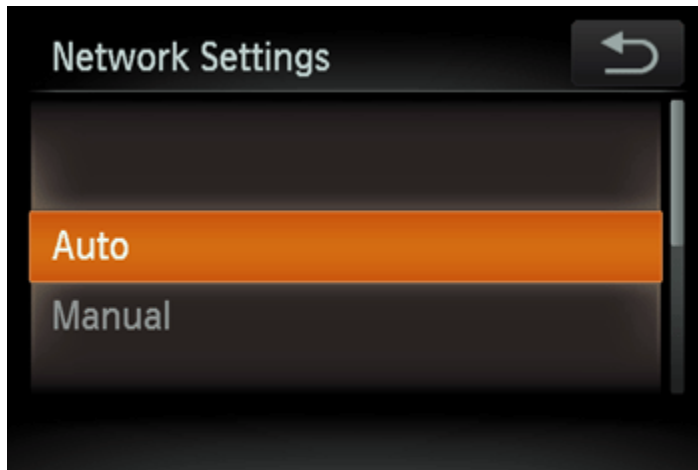
5B-2. Drag up or down across the screen to choose an access point.



5B-3. ① Touch the input field, enter the password with the displayed keyboard, and then ② touch [Next].

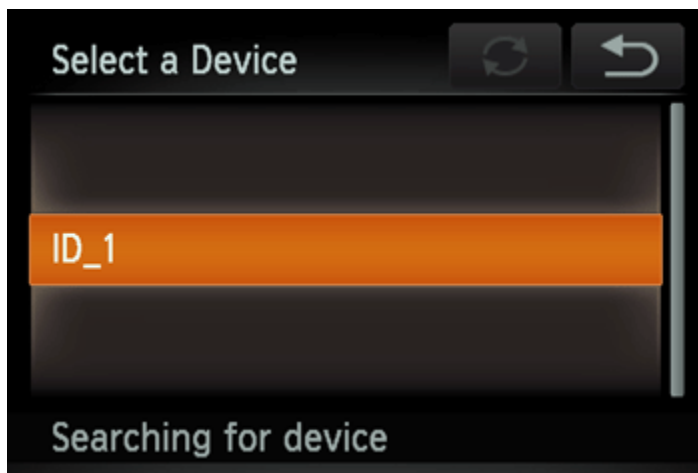


5B-4. Touch [Auto].



5B-5. A list of other devices connected to the access point will appear.

Touch the name of the computer you want to connect with.



A screen like the one below will appear.



If you are using Mac or Windows with the drivers installed, the screen will turn off after the connection is terminated.

Proceed to Step 4: Sending images to a computer.

For Windows users, when connecting your camera to your computer wirelessly for the first time, the display will not change during connection.

Proceed to 6. Driver Installation.

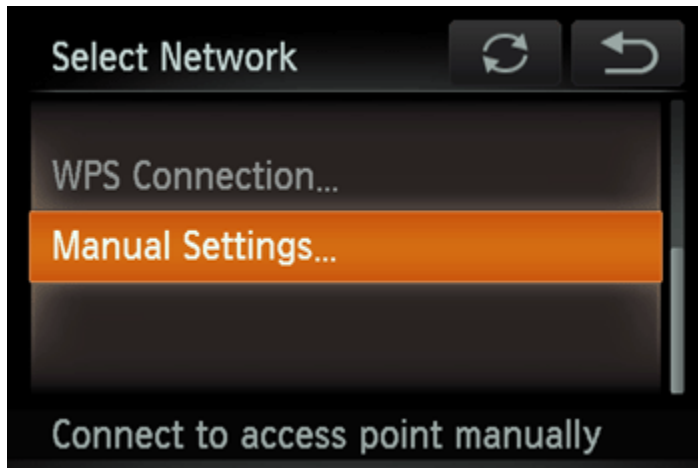
5CConnecting to an access point manually.

5C-1. The access point's SSID, security method, and encryption key are all necessary for connection. Refer to the user guide included with your access point to look up information on SSID, Security method/encryption method, and security keys.

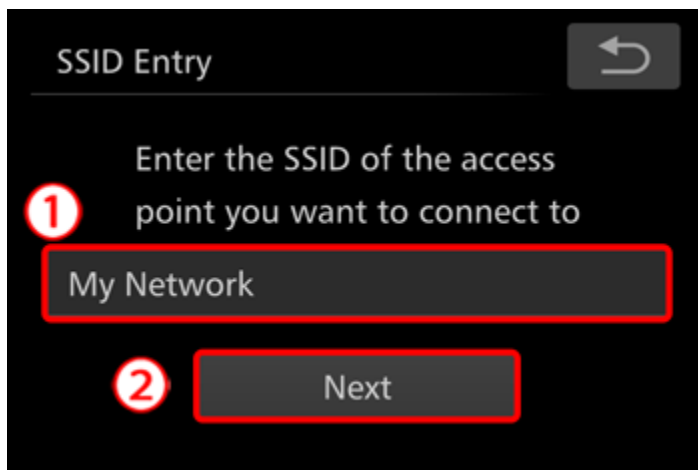
NOTE

- SSID-Numbers and letters used to identify a specific existing access point. This is also called the "access point name" or "network name".
- Security method/encryption method is the method for encrypting data during wireless transmission.
- Encryption key (network key) is the key used when encrypting data during wireless transmission.

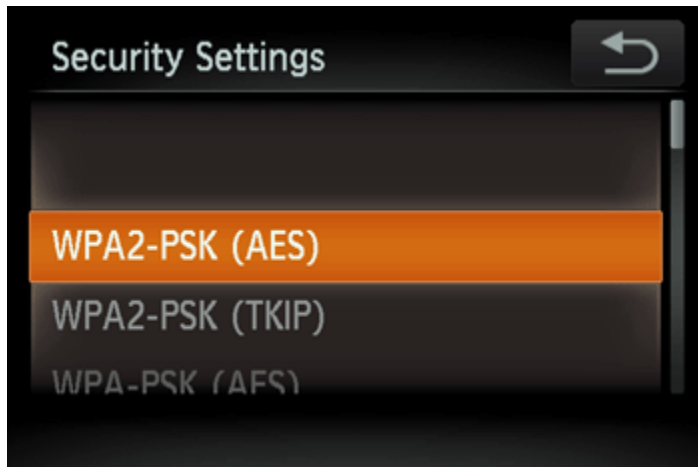
5C-2. Drag up or down across the screen to choose [Manual Settings].



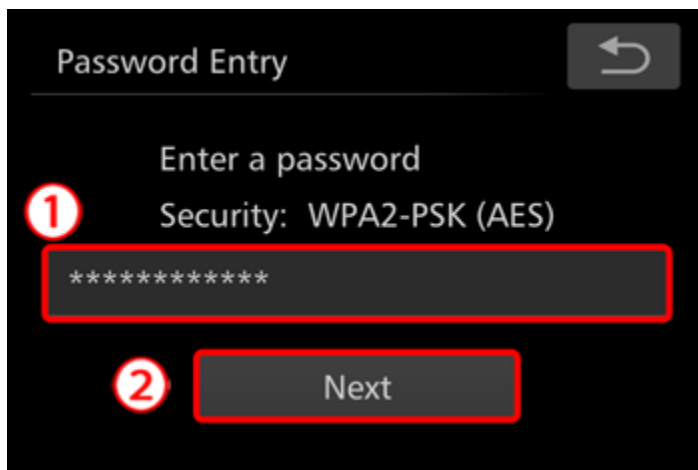
5C-3. ① Touch the input field, enter the SSID key on the displayed keyboard, and then ② touch [Next].



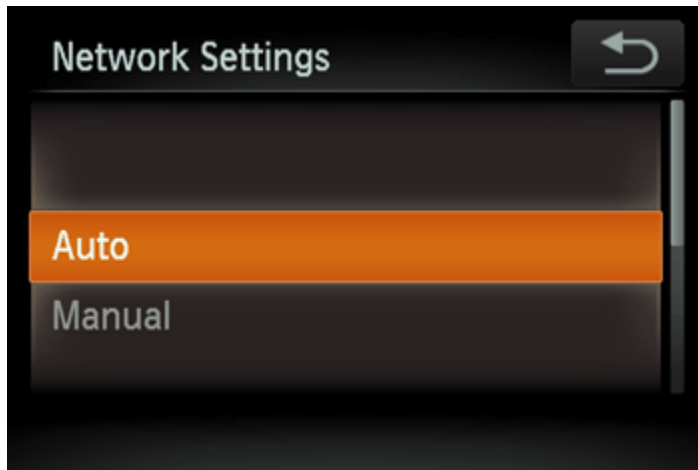
5C-4. Choose the Security method.



5C-5. ① Touch the input field, enter the password on the displayed keyboard, and then ② touch [Next].

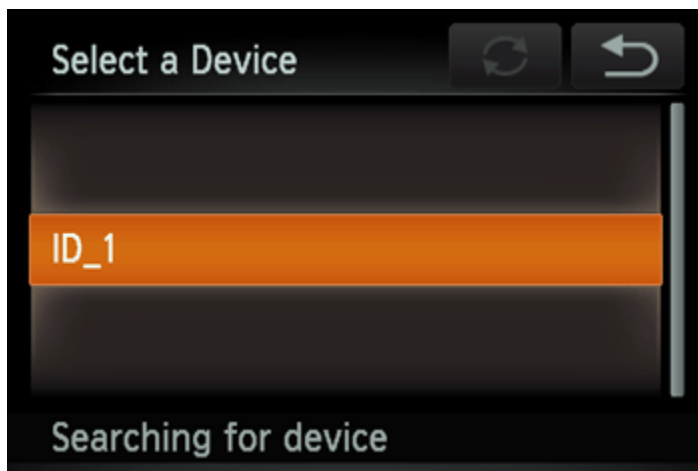


5C-6. Touch [Auto].



5C-7. When a device is found, a screen like the following will appear.

Touch the name of the computer you want to connect with.



A screen like the one below will appear.



If you are using Mac or Windows with the drivers installed, the screen will turn off after the connection is terminated.

Proceed to Step 4: Sending images to a computer.

For Windows users, when connecting your camera to your computer wirelessly for the first time, the display will not change during connection.

Proceed to 6. Driver Installation.

6. Driver Installation (Windows Only)

When wirelessly connecting the camera to a computer for the first time, it is necessary to install the drivers using the following procedure (Windows Only).

7. Make sure the below screen appears on the camera's display.



Windows 7 users:

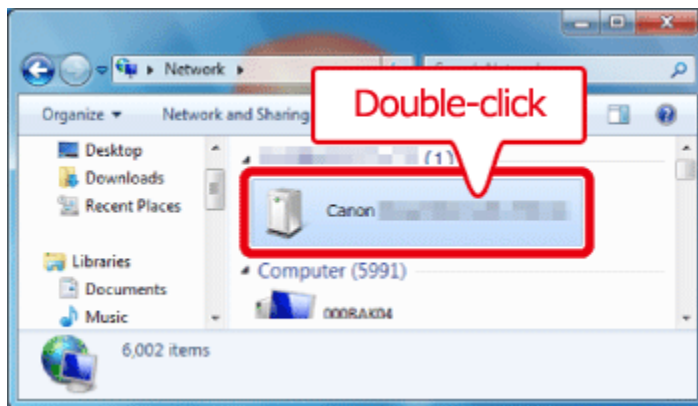
Please proceed to Step 7A: Windows 7.

Windows 8 users:

Please proceed to Step 7B: Windows 8.

7A-1. Windows 7

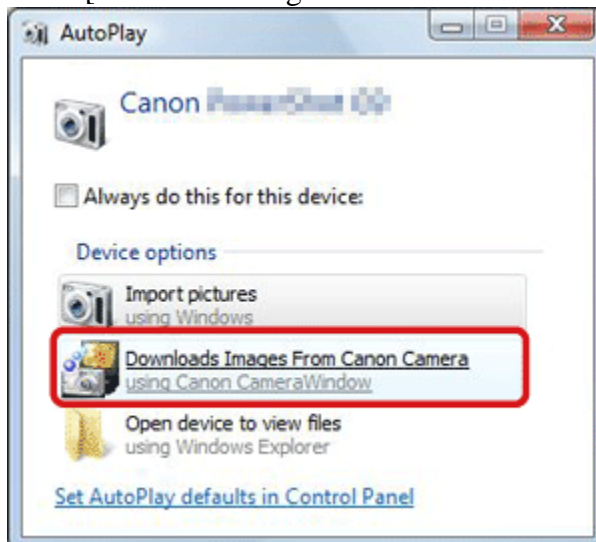
When the screen in step 7 is shown on the camera's LCD panel, click the computer's Start menu and choose [Control Panel] > [Network and Internet] > [View network computers and devices], and then choose the connected camera from [Other Devices] and then double click the camera icon. Driver installation will begin.



7A-2. After driver installation is complete, and the camera and computer connection is enabled, the AutoPlay screen will be displayed.

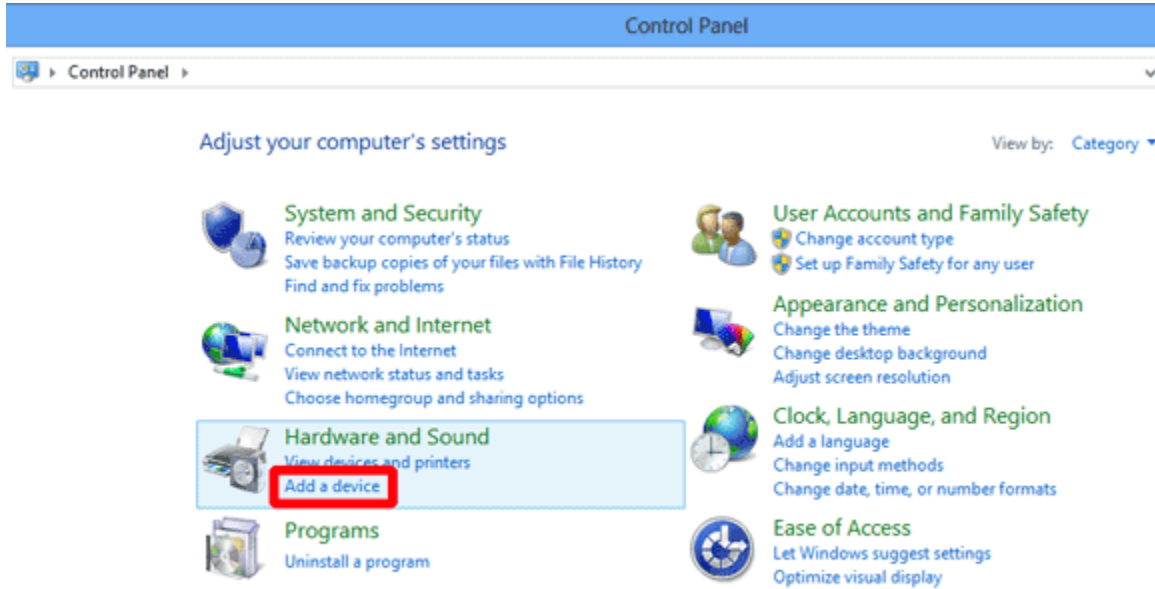
Nothing will be displayed on the camera screen.

Click [Download Images From Canon Camera].



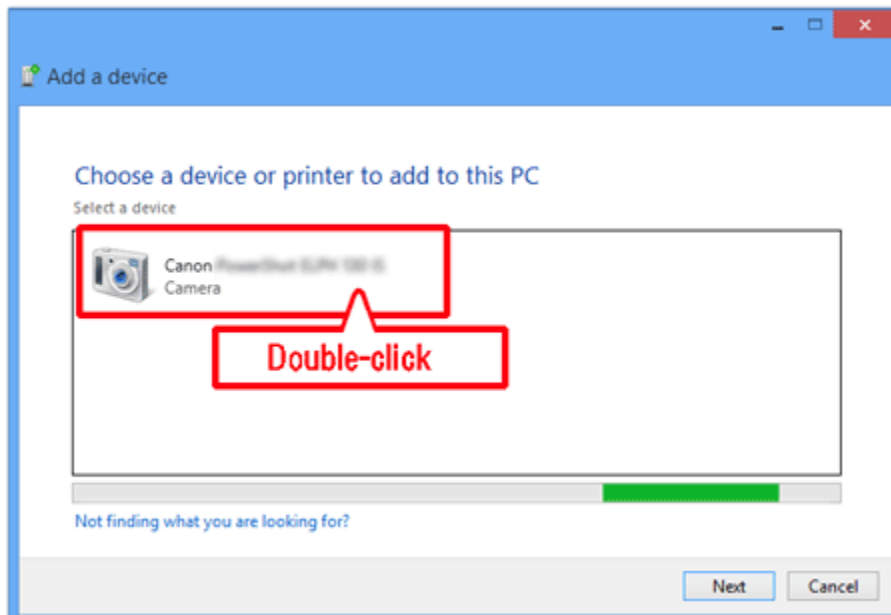
7B-1. Windows 8

When the screen in step 7 is shown on the camera's LCD panel, move the computer's pointer to the bottom right side of the desktop to display the Charms, and then click [Settings] > [Control Panel] > [Add a Device].



7B-2. The camera's icon will be displayed in the [Add a device] screen.

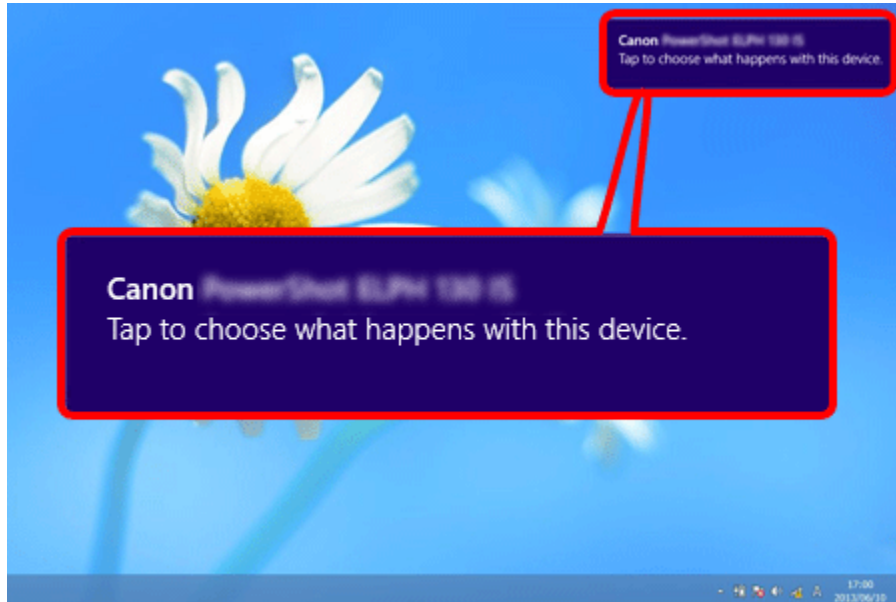
Double-click the icon to begin driver installation.



7B-3. When the connection between the camera and the computer has been established, a screen like the following will appear.

Click [Tap to choose what happens with this device].





Nothing will be displayed on the cameras LCD panel.



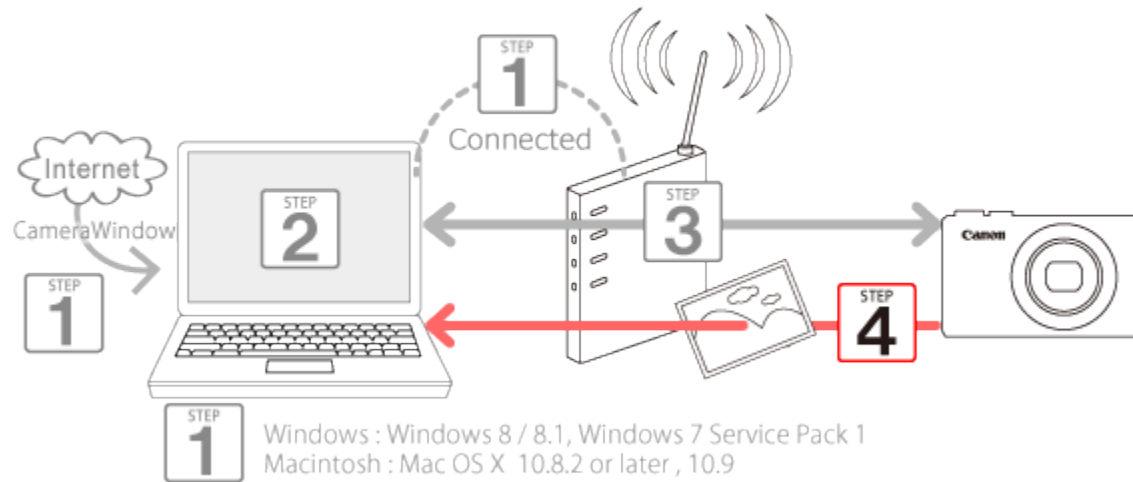
7B-4. Click [Downloads images from Canon camera].

Canon PowerShot ELPH 130 IS

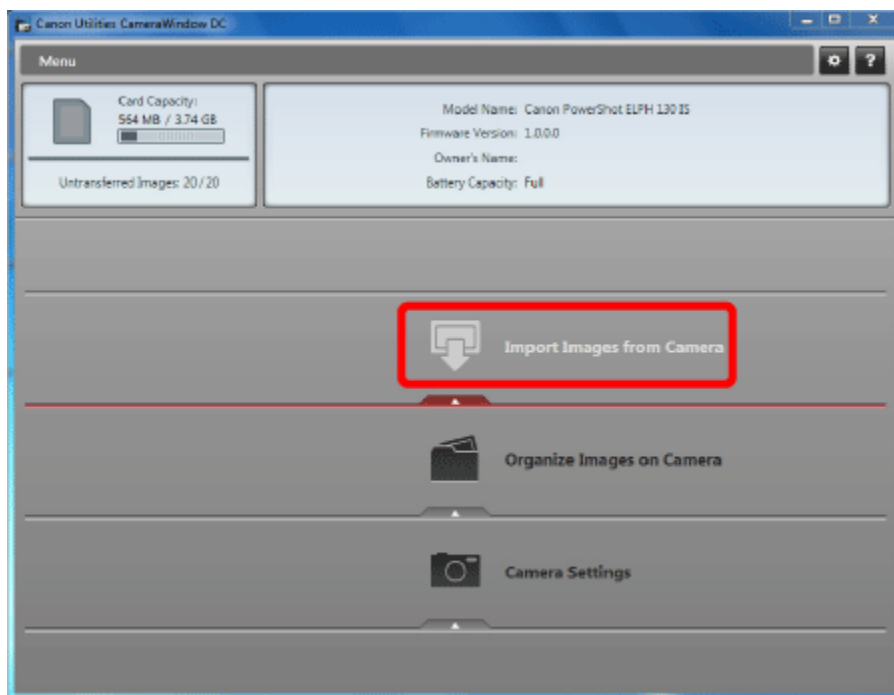
Choose what to do with this device.

-  Downloads Images From Canon Camera
Canon CameraWindow
-  Import photos and videos
Photos
-  Open device to view files
File Explorer
-  Take no action

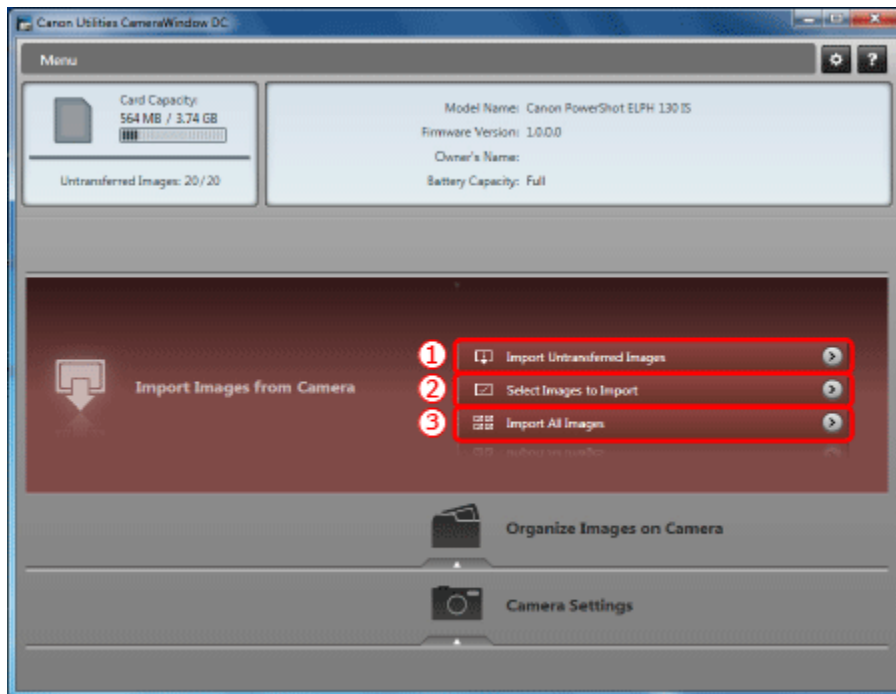
Step 4: Sending images to the computer




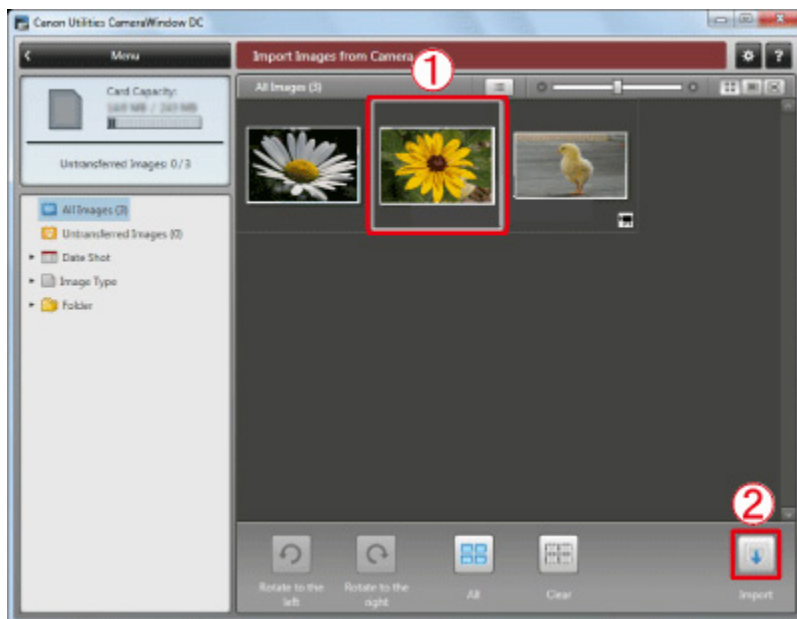
1. The CameraWindow menu window will be displayed, so click [Import Images from Camera].



2. A window like the one shown below will appear, so click ① [Import Untransferred Images], ② [Select Images to Import], or ③ [Import All Images].



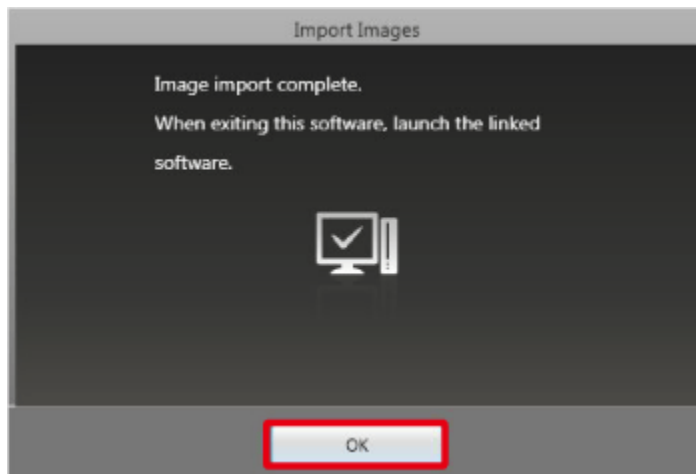
3. If you chose [Select Images to Import] in Step 2, ① select the images you want to import, and then click ② [Import] ().




4. The following window will appear, and the computer will start to transfer images from the camera.



5. Click [OK].



NOTE

- Click the () button to close this window. A related application ([ImageBrowser EX] by default) will start automatically and the imported images are displayed.
- CameraWindow default settings will save images to the Pictures or My Pictures folders on a computer.
- Movies will take longer to import since the file size is larger than still images.
- To disconnect from the camera, turn off the camera.