



Connecting to a Wireless LAN using manual setup

Selecting the Wireless Network

When **[Find network]** is selected, a list of active access points nearby is displayed, accompanied by information about them. Select the SSID (or ESS-ID) of the access point to connect to.



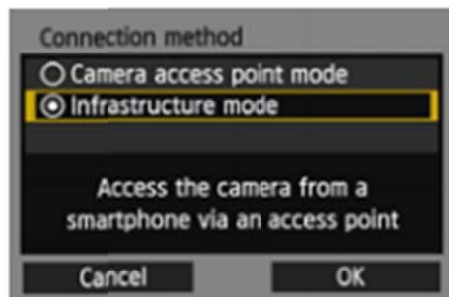
1 Select **[Wi-Fi function]**.

- Under the **[F3]** tab, set **[Wi-Fi]** to **[Enable]**, then select **[Wi-Fi function]**.



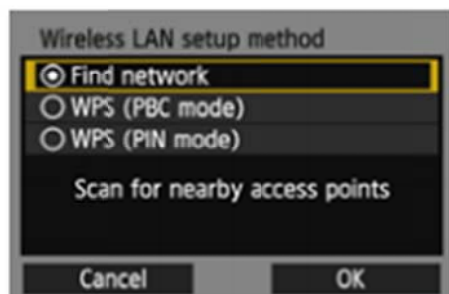
2 Select an item.

- Select either **[📷]** **[📱]** **[💻]** or **[🖥️]**, then press **<SET>**.



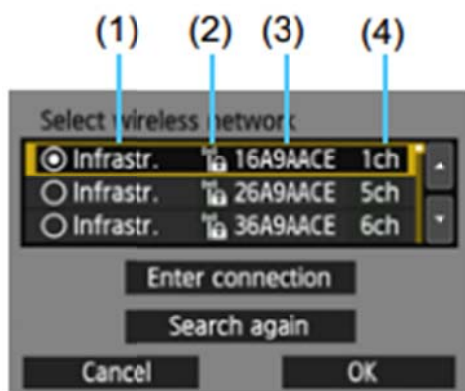
3 Select **[Infrastructure mode]**.

- Displayed when **[📱]** or **[💻]** is selected. Go to step 4 when selecting **[📷]** or **[🖥️]**.
- Press the **<▲▼>** key to select **[Infrastructure mode]**, then press **<SET>**.
- Select **[OK]** and press **<SET>** to go to the next screen.



4 Select **[Find network]**.

- Press the **<▲▼>** key to select **[Find network]**, then press **<SET>**.
- Select **[OK]** and press **<SET>** to go to the next screen.



5 Select an access point.

- Press <SET> to enable the selection of an access point.
- Press the <▲▼> key to select an access point, then press <SET>.
- Select [OK] and press <SET> to go to the next screen (p.69).

- (1) Indicates whether the device is in infrastructure or ad hoc mode
 (2) An icon is displayed if the access point is encrypted
 (3) First characters of the SSID
 (4) Channel used

Access Point Encryption

This camera supports the following options for **[Authentication]** and **[Encryption settings]**. Therefore, the encryption used by the access point should be one of the following.

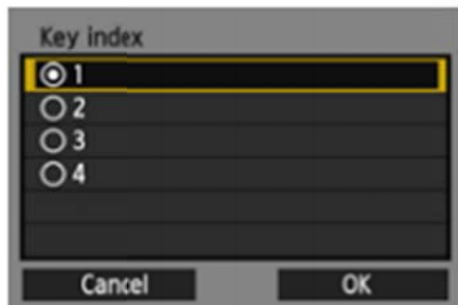
- **[Authentication]**: Open system, Shared key, WPA-PSK, or WPA2-PSK
- **[Encryption settings]**: WEP, TKIP, or AES

[Enter connection] and [Search again]

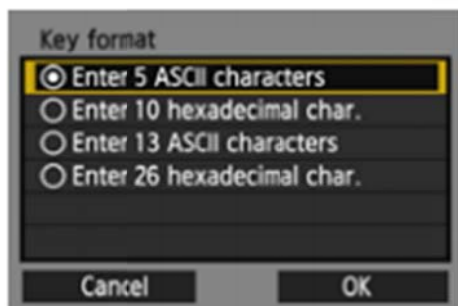
- To configure settings for the access point manually, select **[Enter connection]** and press <SET>. Enter the SSID using the virtual keyboard and then configure settings following the instructions displayed.
- To search for access points again, select **[Search again]** and press <SET>.

Entering the Wireless LAN Encryption Key

Go to the next page when the **[IP address set.]** screen is displayed. Set the encryption key specified for the access point. For details on the specified encryption key, refer to the access point's instruction manual. Note that the screens displayed in steps 1 to 3 below vary depending on the authentication and encryption specified for the access point.



- 1
 - The **[Key index]** screen is displayed only if WEP encryption is used by the access point.
 - Press the **<▲▼>** key to select the key index number specified for the access point, then press **<SET>**.
 - Select **[OK]** and press **<SET>** to go to the next screen.

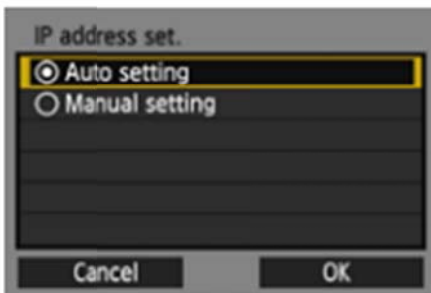


- 2
 - Press the **<▲▼>** key to select the format and the number of characters used for the key, then press **<SET>**.
 - Select **[OK]** and press **<SET>** to go to the next screen.



- 3
 - Enter the encryption key using the virtual keyboard (p.14).
 - ▶ The **[IP address set.]** screen (p.70) will be displayed.

Setting the IP Address



- Press the $\triangle \nabla$ key to select how the IP address should be set, then press $\langle \text{SET} \rangle$.

[Auto setting]

Configures the settings available in **[Manual setting]** automatically. However, this option can only be used in environments using DHCP servers, or access points or routers with DHCP server functionality, such that IP addresses and related settings are assigned and configured automatically.

- Select **[OK]** and press $\langle \text{SET} \rangle$ to display the setting screen for the communication method (p.71).
- If an error is displayed even though the IP address and related settings is set to be automatically assigned and configured, select **[Manual setting]**.

[Manual setting]

If **[Auto setting]** results in an error, enter the IP address manually. Enter the IP address assigned to the camera when prompted for the IP address.

- Select **[OK]** and then select an item on the screen displayed. When finished, press $\langle \text{SET} \rangle$.
- When entering numbers, turn the $\langle \text{dial} \rangle$ to move the input position in the upper area and turn the $\langle \text{dial} \rangle$ to select the number. Press $\langle \text{SET} \rangle$ to enter the selected number. When you have finished entering information, press the $\langle \text{MENU} \rangle$ button. A confirmation screen is not displayed.
- When you have completed setting all items, select **[OK]** and press $\langle \text{SET} \rangle$. The setting screen for the communication method will be displayed (p.71).



- If you are not sure what to enter, see “Checking Network Settings” (p.166), or ask the network administrator or another person knowledgeable about the network.